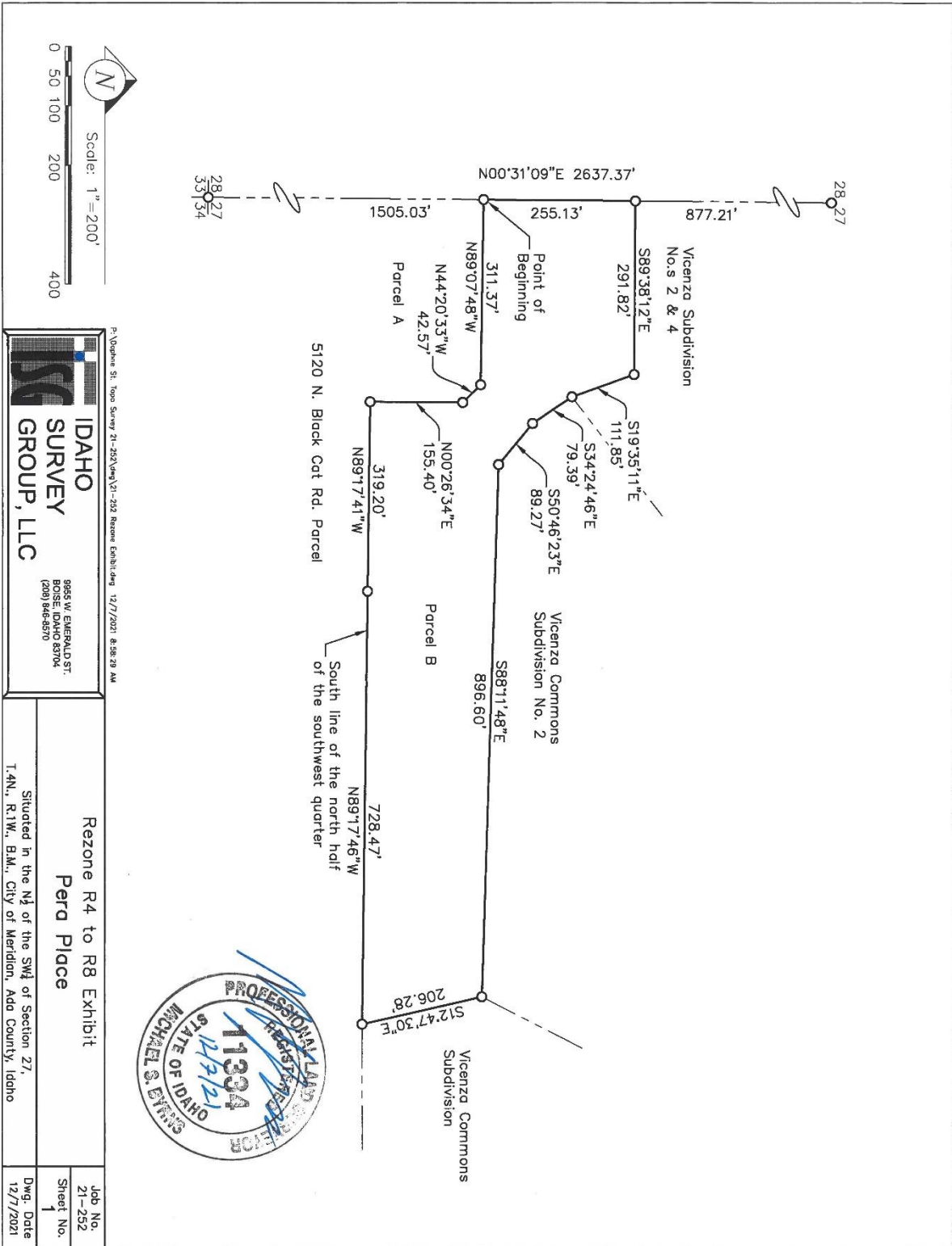


EXHIBIT B



IDAHO SURVEY GROUP, LLC
 9955 W. EMERALD ST.
 BOISE, IDAHO 83704
 (208) 946-8570
P:\Vidwaine St. Topo Survey 21-252\Vidw 21-252 Rezone Exhibit.dwg 12/7/2021 8:28:29 AM

Rezone R4 to R8 Exhibit Pera Place	
Situated in the N½ of the SW¼ of Section 27, T.4N., R.1W., B.M., City of Meridian, Ada County, Idaho	
Job No. 21-252	Dwg. Date 12/7/2021
Sheet No. 1	