



MEMO TO TRANSPORTATION COMMISSION

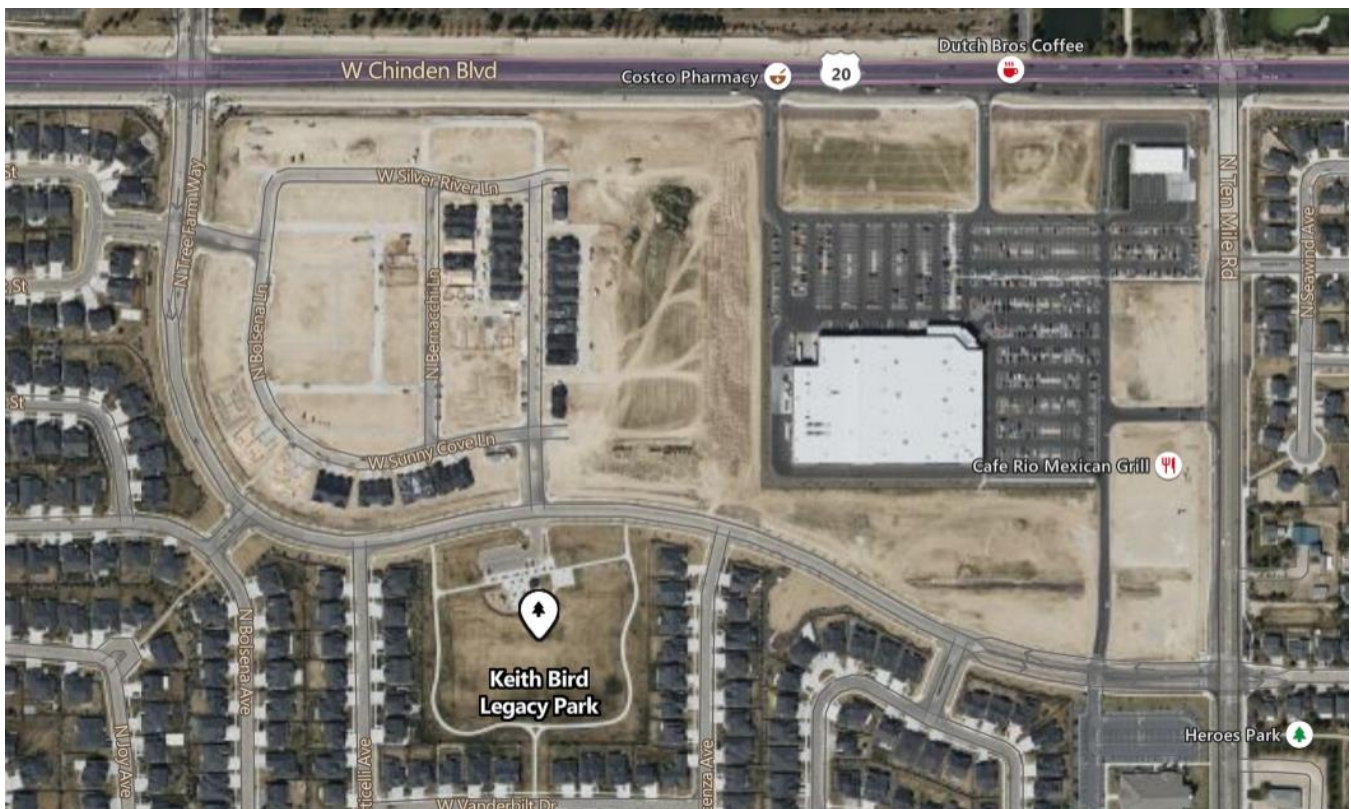
Agenda Topic on the Transportation Commission Agenda

From: Miranda Carson

Meeting Date: October 3, 2022

Topic: Lost Rapids Citizen Requests

A citizen recently requested 1. speed limit signs be posted near Bird Park on Lost Rapids Dr and 2. a painted crosswalk be considered across Lost Rapids at the Bird Park entrance. The intent of this agenda item is to prompt a discussion and determine what if any action if the Transportation Commission recommends the City take on these requests.



The original correspondence is below:

It appears that folks are increasingly using Lost Rapids as a “shortcut” to avoid the Chinden/Ten Mile intersection where the new Costco is. With Bird Park across from Cadence, and the number of school buses across from the park, I have seen several instances of excessive speed. I’m not sure what the actual speed limit is, but I would ask that speed limit signs be posted near Bird Park. You had asked me to send you an email which you would send on to the people best suited to address this issue. I appreciate your concern. Sincerely, Chuck MacLean

Follow up from Mr. Mclean included the crosswalk consideration:

You might check with them at the meeting on 10/3 about perhaps a white painted crosswalk (not light signaled) between the Cadence entrance and Bird Park entrance. Note that there is a school bus stop at that intersection. Thanks, Chuck

John Wasson, ACHD provided the following input on the speed limit signage:

Lost Rapids is posted for 25 MPH west on Ten Mile and Tree Farms is also posted for 25 MPH south of Chinden. The total of both roads is approximately 3500 feet from Ten Mile to Chinden. There is no specific guidance for installing additional speed limit signs in an already posted other than posting a speed limit at locations where the speed limit changes.

Following an inquiry on collecting speed data at the location, Sgt Dance provided the following information:

We have two speed radar trailers that we put out at various locations. One of them is capable of collecting speed data, however they are both in high demand. We have a waiting list for them at the moment of probably a month or so. Also, we won't put them along a street with bike lanes because then we get complaints of blocking the bike lane (you can't win for trying sometimes), which it looks like this section of road has bike lanes on both sides.

We have had complaints of speed along this road in the past and we have gone out and enforced the speed limit at various times. I would be interested to know if ACHD would need or want to do a speed study before deciding if they will put up additional signage. If so, they would conduct the study, probably with speed ropes.

So, long story short... We wouldn't set our speed trailer up out there because of the bike lanes, however I will add this stretch of road to our "areas of emphasis" and get more police presence out there.