



# AB: 5876 Mercerdale Park Playground Appropriation Request

May 18, 2021

Jason Kintner, Chief of Operations  
Paul West, CIP Project Manager

1

## Tonight's Discussion Topics

- Project Need
- Design Process
- Recommended Design
- Project Budget & Appropriation Need



2

## Project Need

- Built in 2002
- Inspected regularly
- Aging Equipment
- Failed Drainage



[www.mercergov.org](http://www.mercergov.org) Tuesday, May 18, 2021

3

## Process to Date

Timeline

- **January 2021** – Project start
- **February 8** – Public Meeting #1: Scoping and Public Input
- **April 1** – PRC Briefing
- **April 14** – Public Meeting #2: Design Options
- **May 6** – PRC Design Input
- **May 18** – City Council Approval
- **Summer 2021** – Construction



4

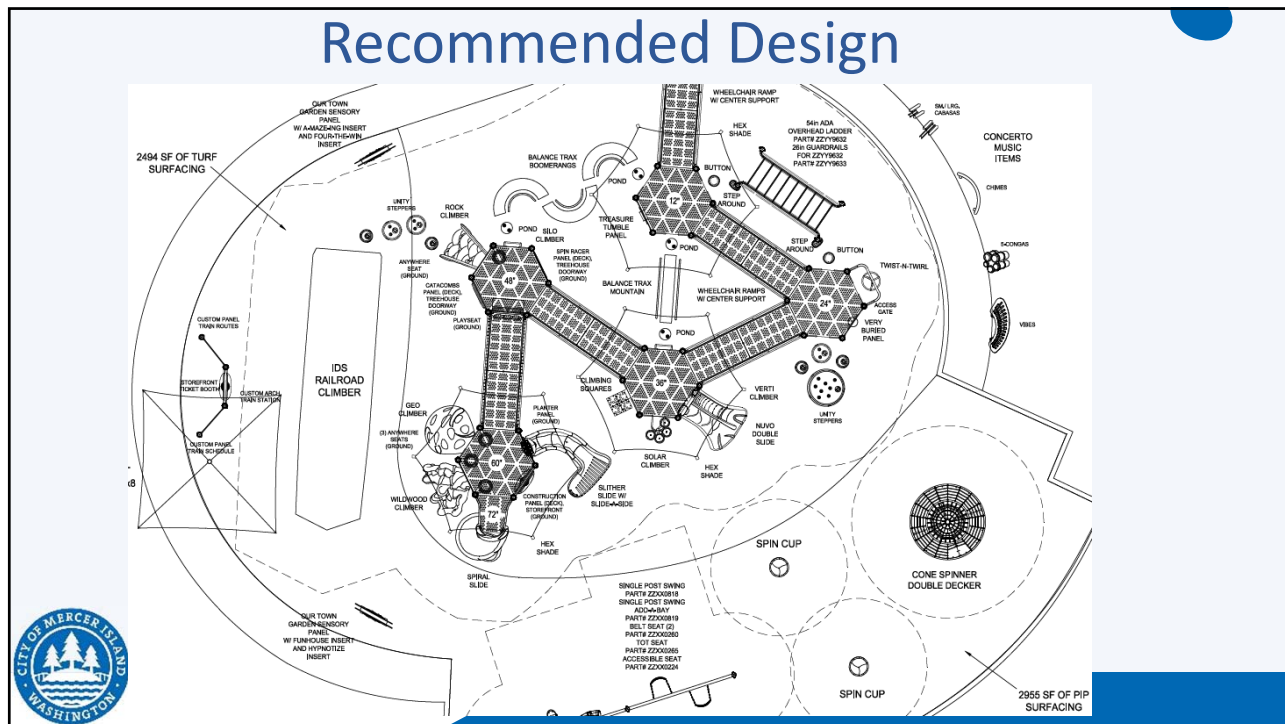
# Public Meetings Recap

- February 8 Zoom meeting
  - Scoping and Public Input
  - Participants supported more accessible and inclusive play options
- April 14 Zoom meeting
  - Design Options discussed: Color, Surfacing, Platform Height, Additional Climbing, Spinning features
  - Webinar format included interactive polling and Q&A features
  - Continuing support for accessible and inclusive design
- Parks and Recreation Commission Review
  - Confirmed Preferred Design
  - Declined to support an expansion of footprint or extra surfacing graphics



5

# Recommended Design



6



7



8



9



10



Climbable Cone Spinner


11

12

## Budget and Appropriation Request

<b>Total Project Cost</b>	<b>\$843,000</b>
Current Budget	(\$490,000)
MIPA Donation	(\$20,000)
<b>Appropriation Request</b>	<b>\$333,000</b>

- Park Impact Fees may be used to fund the portion of the project that is “new” capacity.
- Staff recommend that Council authorize the maximum amount of Park Impact Fees eligible to fund this project.



www.mercergov.org

Tuesday, May 18, 2021

12

# Motions

1. Accept the proposed project design for the Mercerdale Park Renovation Project and approve the amended project budget of \$843,000.
2. Accept the \$20,000 donation from the Mercer Island Preschool Association and appropriate the donated funds to the Mercerdale Park Renovation Project. Authorize the City Manager to direct additional donations to the project.
3. Direct the City Manager to complete the park impact fee funding evaluation for this project and authorize the appropriation of the maximum amount of eligible park impact fees to this project.
4. Authorize the remaining project funds to be drawn from the available fund balance in the Capital Improvement Fund.

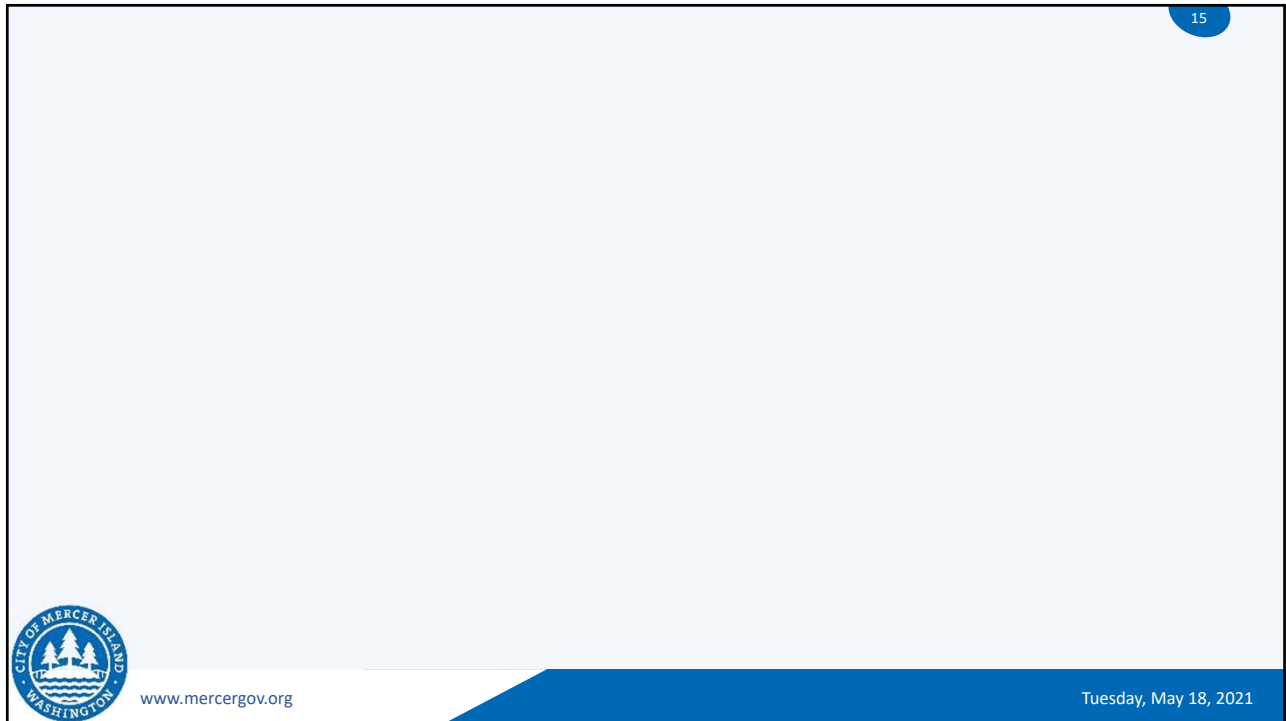


www.mercergov.org

Tuesday, May 18, 2021

# Questions?





15

## Public Meeting Recap


**Color** – opinion split. Top 2 (56%) contained bright accents in more muted color schemes

**Surfacing** – 58% preferred the mixed rubber and play grass.

**Platform Height** – 61% were in favor of the tallest (72”) platform.

**Additional Climbing** – 40% preferred the Cone Spinner. An elevated climber was second choice (30%).

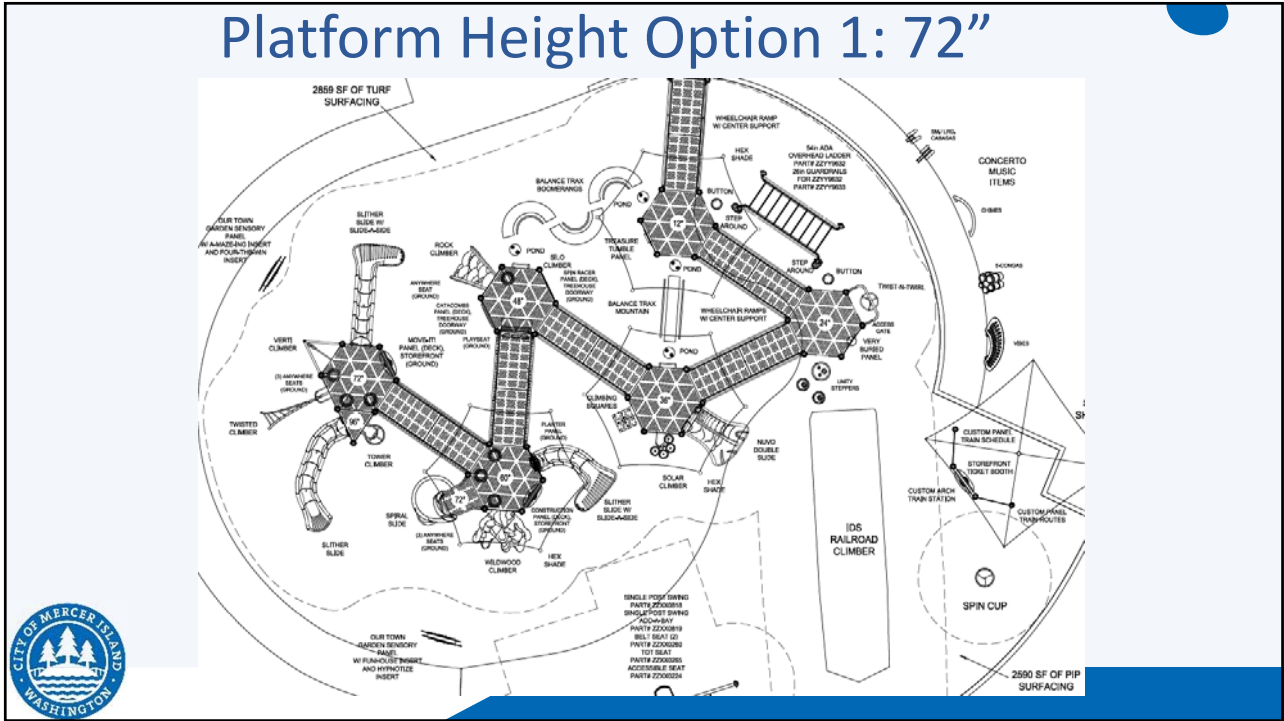
**Spinning** – 58% preferred the Accessible Whirl.



16



# Platform Height Option 1: 72"



17



18

## Platform Height Comparison

Option 1: 72" Height	Option 2: 60" Height
Six Platforms	Five Platforms
Provides more ADA accessible activities	Provides more inclusive spinning activities
Tallest slide: 96"	Tallest slide: 72"
\$774k	\$755k
Social play: double slide, train and station, under-platform seating	Social play: double slide, train and station, under-platform seating, spinning
Train less visible	Train more visible



## Inclusivity Analysis by Let Kids Play!

- "Both of the designs do an excellent job of providing various physical, social and sensory experiences."
- "Option 1 puts its challenge into climbing. That design's structure goes up to 96" with challenging climbers at the end of that structure.... On the other hand, Option 2 puts its challenge into spinning. The Double Cone Spinner is a wonderful piece."
- The train, as The Coolest Thing on the playground, is accessible to all. "Every child can have a meaningful play experience, whether wheeling in to drive the train or climbing up to the top. The train offers physical, sensory and social experiences."





21

22

## Accessible Whirl curbing modification

Addition to existing playground

2955 SF OF PIP SURFACING

120 SF OF ADDITIONAL SURFACING REQUIRED.  
38 LF OF EDGING

2955 SF OF PIP SURFACING

www.mercergov.org

Tuesday, May 18, 2021

22

23



## SAFETY SURFACING



www.mercergov.org

Tuesday, May 18, 2021

23

### Option 1 – Poured-in-Place



24

## Option 2 – Playground Synthetic Grass



25

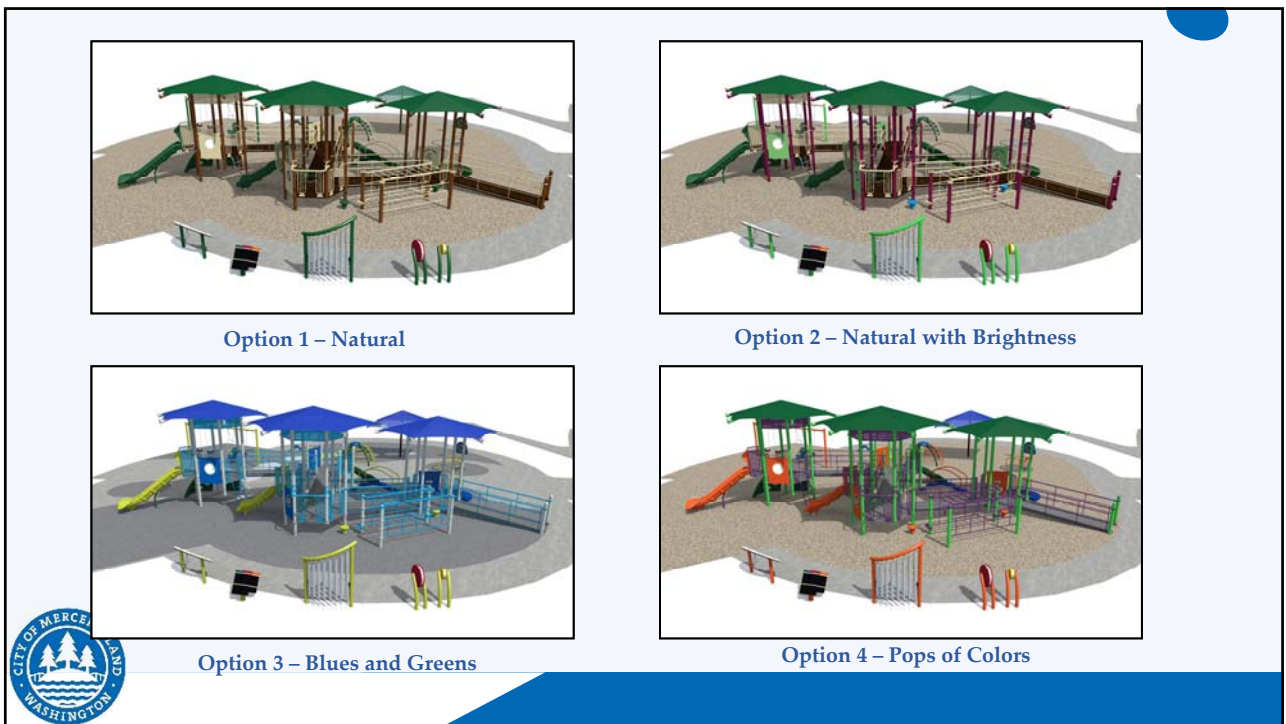
## Option 3 – Mixed Use Surface



26



27



28

## Option 2 – Natural with Brightness



29

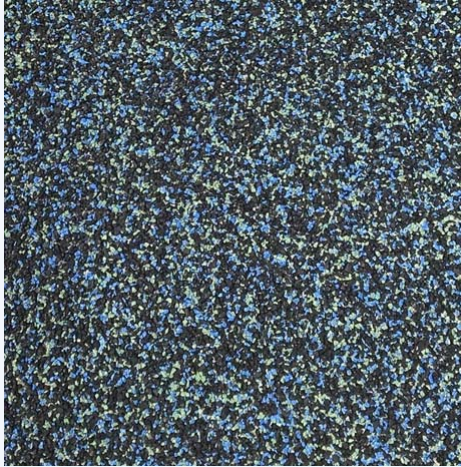
## Option 4 – Pops of Color



30

## Render Graphics Limitations

31



Program cannot show textures or gradients



[www.mercergov.org](http://www.mercergov.org)

Tuesday, May 18, 2021