

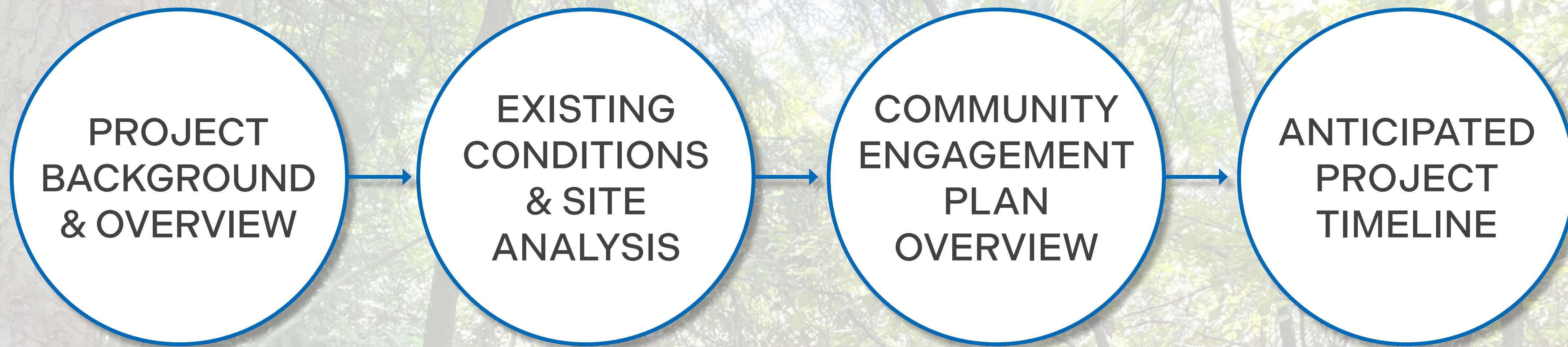


# DEANE'S CHILDREN'S PARK

CITY OF MERCER ISLAND PARKS

CITY COUNCIL PRESENTATION | 03.18.2025

# OUR AGENDA:



# QUESTION FOR THE CITY COUNCIL:

DOES THE CITY COUNCIL APPROVE OF THE SCOPE OF WORK AND COMMUNITY ENGAGEMENT PLAN FOR THE DEANE'S CHILDREN'S PARK SITE PLAN?

**IDENTIFY**  
ANY GAPS

**CONFIRM**  
APPROACH

**PROVIDE**  
ANY  
ADDITIONAL  
INPUT

# PROJECT BACKGROUND

## PARK FORMATION

- A children's park was developed as part of Island Crest Park in 1962 and originally known as 'Dragon Park'. The City acquired Island Crest Park in 1968 and renamed the play area Deane's Children's Park in 1985, in honor of Lola and Phil Deane, Mercer Island residents who were instrumental in the park's creation.

## 2022 PROS PLAN

- The PROS Plan included a conditions assessment of park infrastructure and amenities. It revealed ten out of 18 playgrounds in the park system were approaching the end of their useful life, including play structures at Deane's Children's Park.
- Deane's Children's Park was one of five playgrounds with equipment slated for replacement in the 2023-2028 Parks CIP.

## PARK LEVY

- The parks levy that was set to expire at the end of 2023 was renewed, which continued funding for parks operations and maintenance, in addition to funding Pioneer Park forest management and the replacement of 15 play structures.
- Deane's Children's Park was prioritized for early replacement due to age and condition of equipment and the desire to provide universally accessible play opportunities.



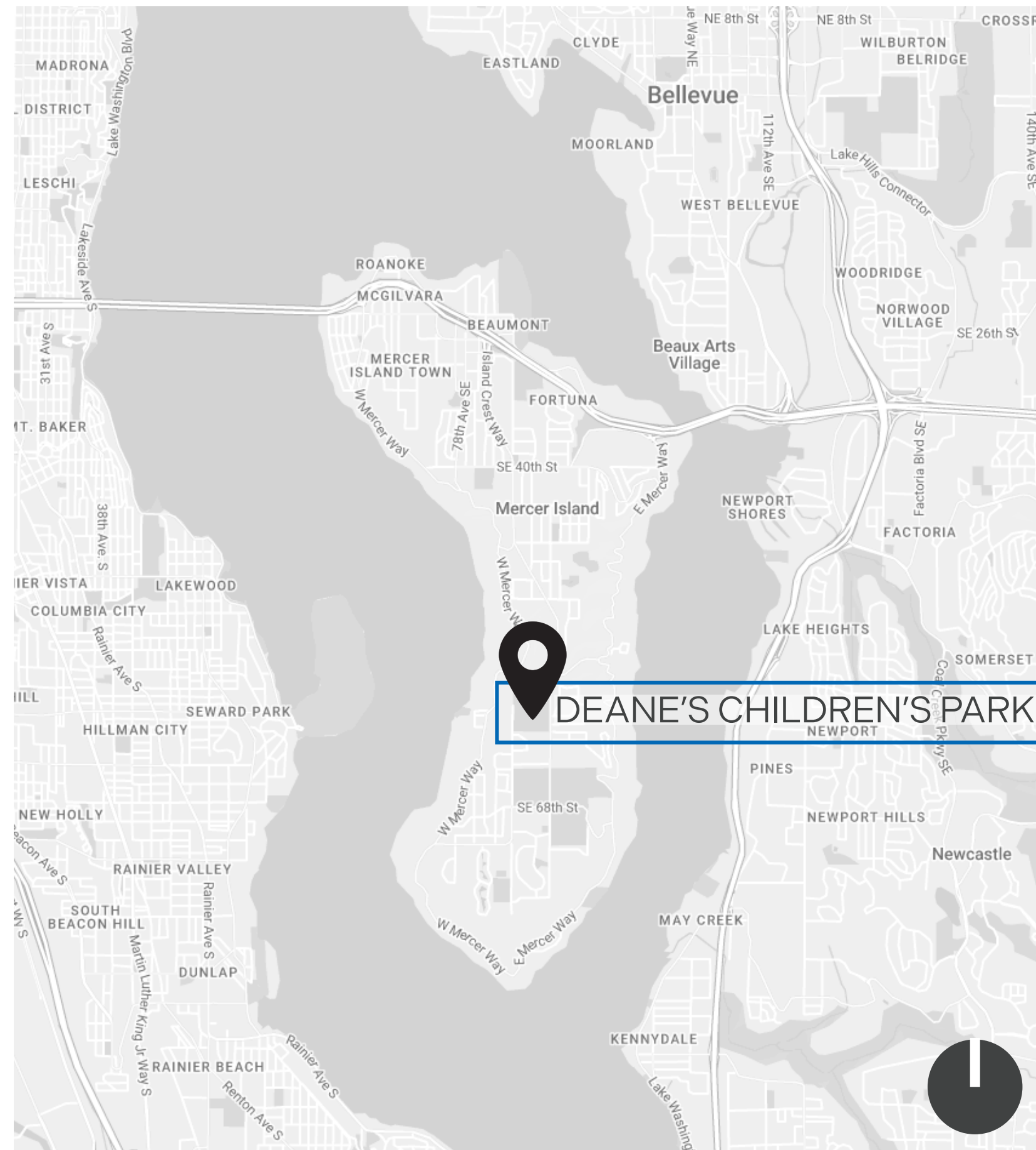
# PROJECT OVERVIEW

## DEANE'S CHILDREN'S PARK SITE PLAN




- The Site Plan will cohesively integrate the Bike Skills area and playground structures, with the goal of modernizing the park area to meet universal play standards.
- The Site Plan will address improvements to site circulation, restroom and picnic shelter replacement, parking, and other potential improvements.
- Community engagement will contribute to play equipment selection, design concept alternatives, and the final Site Plan.
- The final Site Plan will include a cost estimate, phasing plan, and funding strategy.
- Levy funding does not include resources for broader site improvements. The scope of the phase I improvements will be determined during site planning and will include replacement of one of more playground structures.

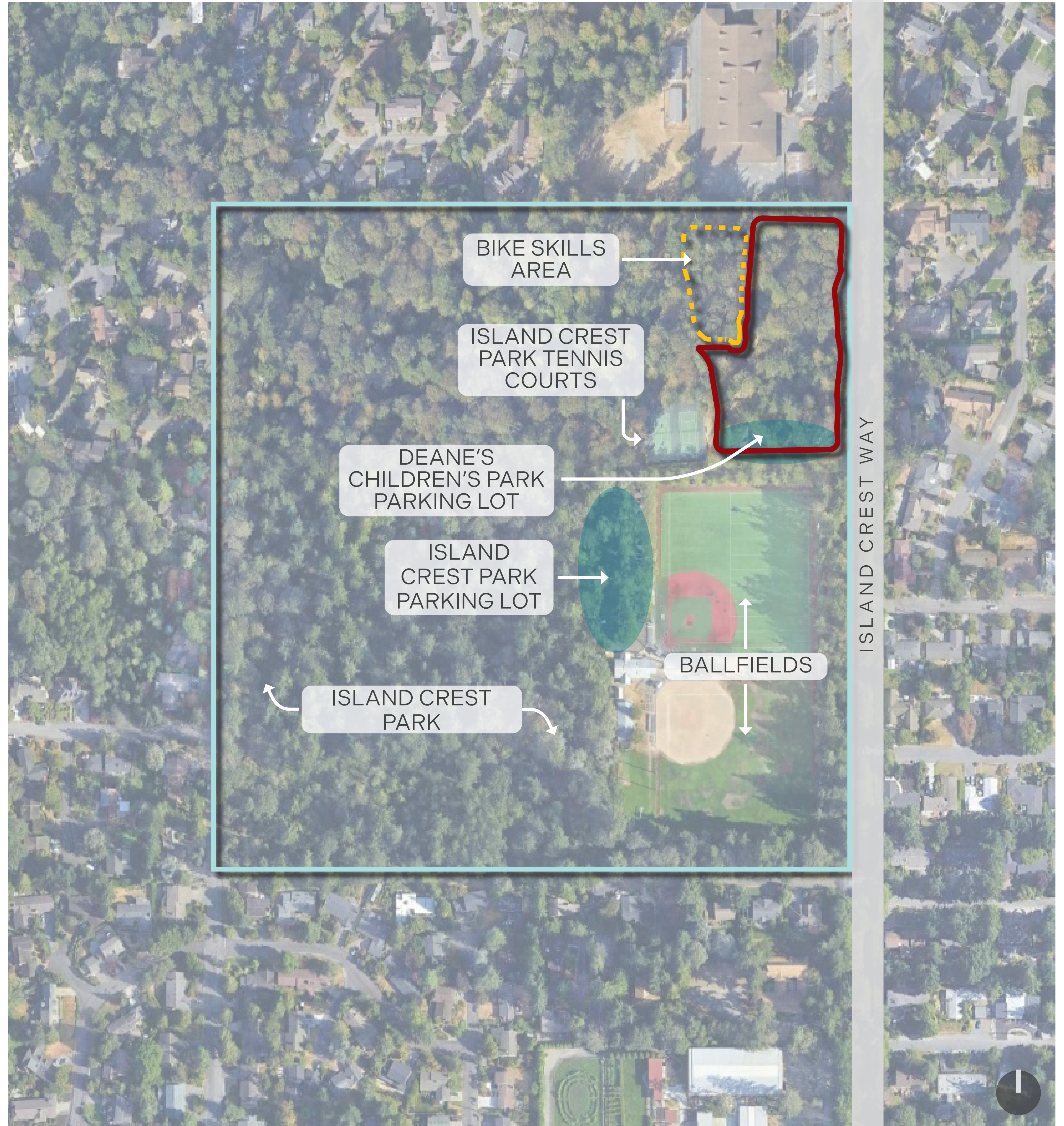


# SITE LOCATION & CONTEXT MAPS

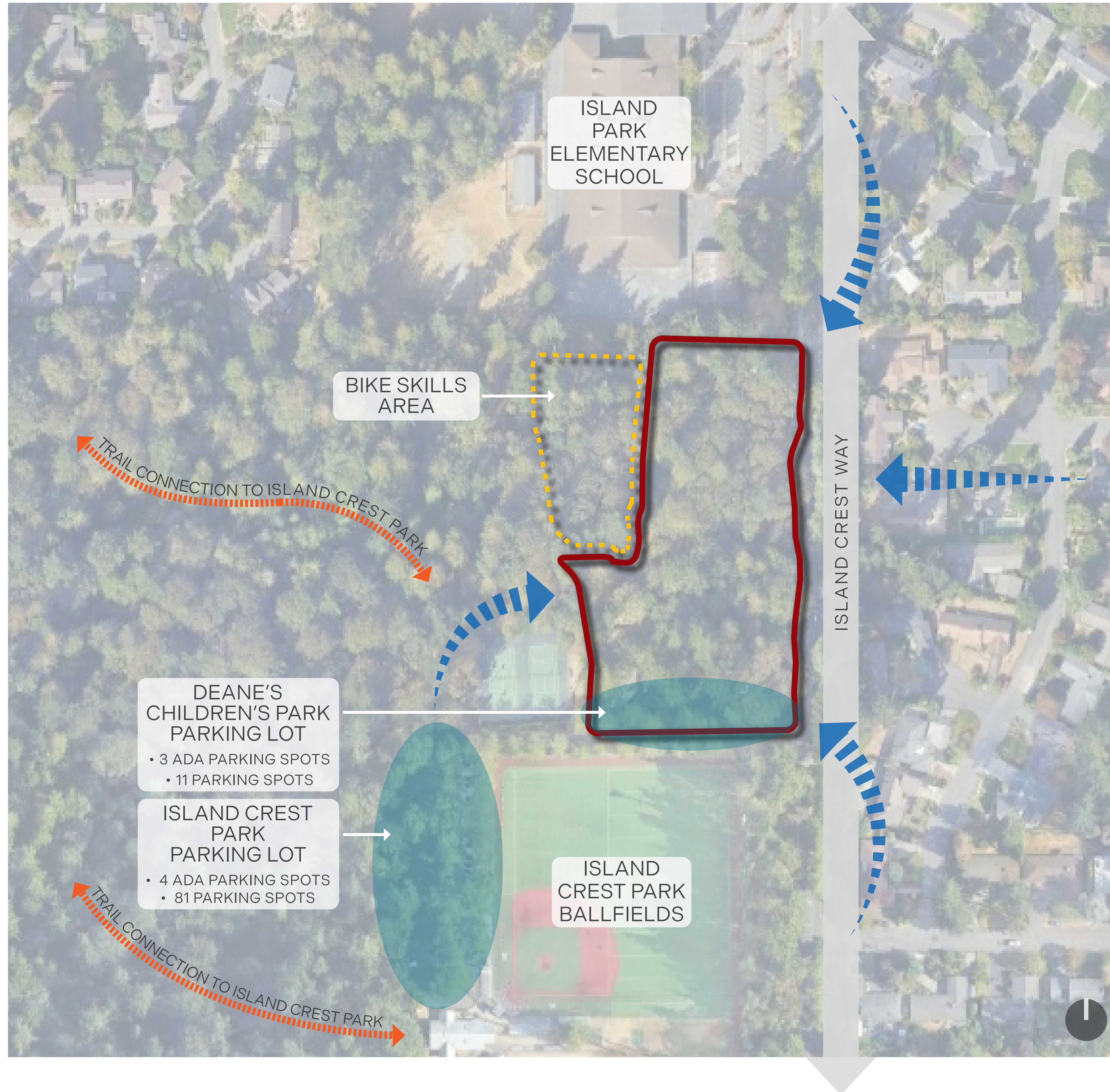


## LEGEND

-  **ISLAND CREST PARK**  
Existing Park Boundary
-  **BIKE SKILLS AREA**  
Existing Boundary
-  **SITE PLAN LIMITS**  
Scope of Work



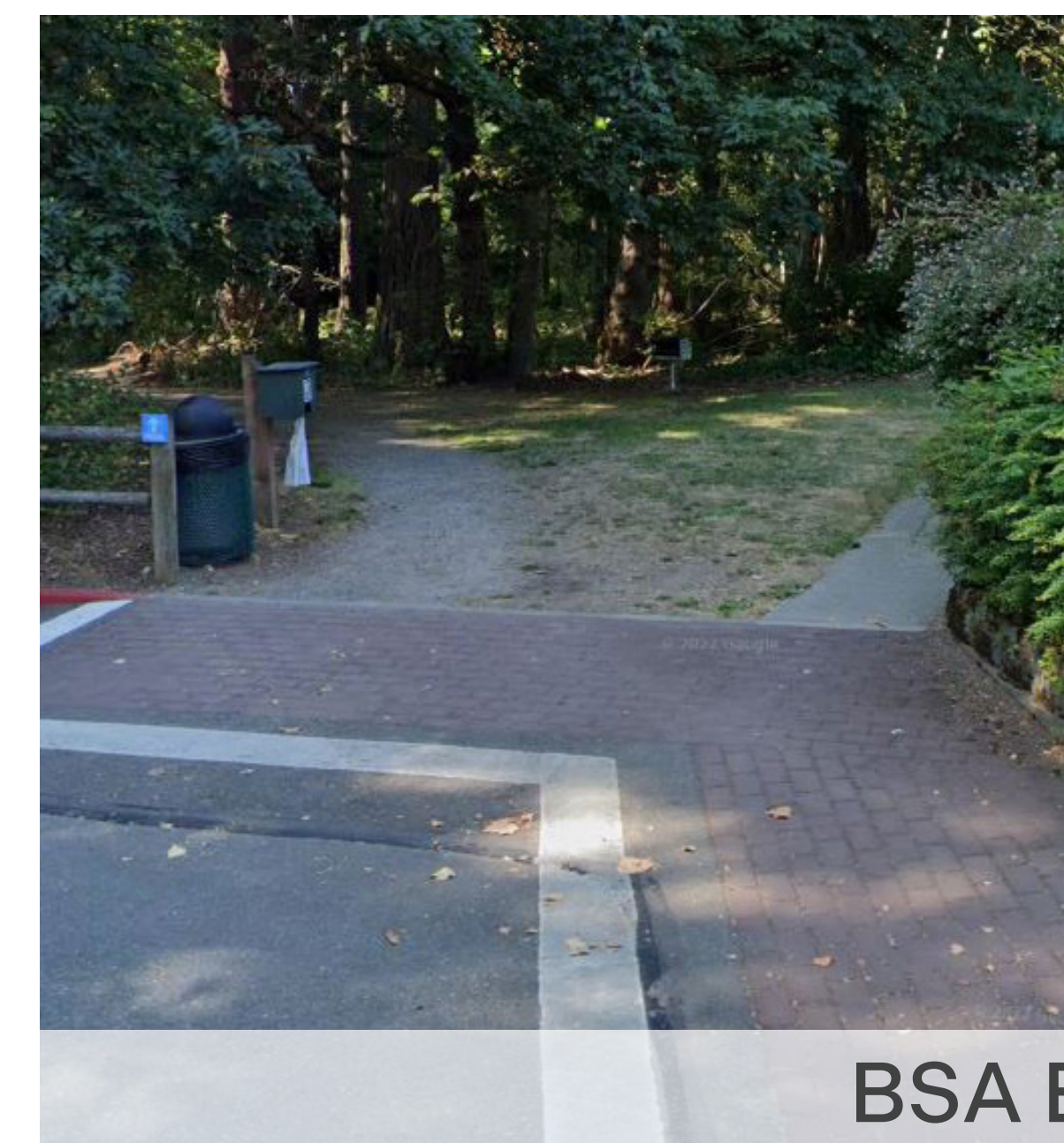
# DEANE'S CHILDREN'S PARK ACCESS



MAIN ENTRY / ADA SPOTS



OVERALL PARKING LOT



BSA ENTRIES

# EXISTING SITE CONDITIONS

IDENTIFY ANY GAPS



## SITE CONSTRAINTS

- 1 EXISTING AMENITIES**
  - Shelter at the end of its lifespan
  - Original restroom decommissioned, serves as storage shed
  - Functional restroom not centrally located/easily accessible
- 2 SITE CIRCULATION**
  - Main entry to playground and site navigation are unclear
  - Trails and pathways in need of upgrades for accessibility requirements
  - Disjointed, widely spaced play elements with interrupted sightlines
  - Accessible parking does not meet standards
- 3 PLAY EQUIPMENT**
  - Play structures/elements (excluding the Dragon Sculpture) are in need of replacement
  - Lack of diverse & inclusive play opportunities
  - Existing accessible play elements are not truly accessible
  - Timber curbs make it difficult to access play areas

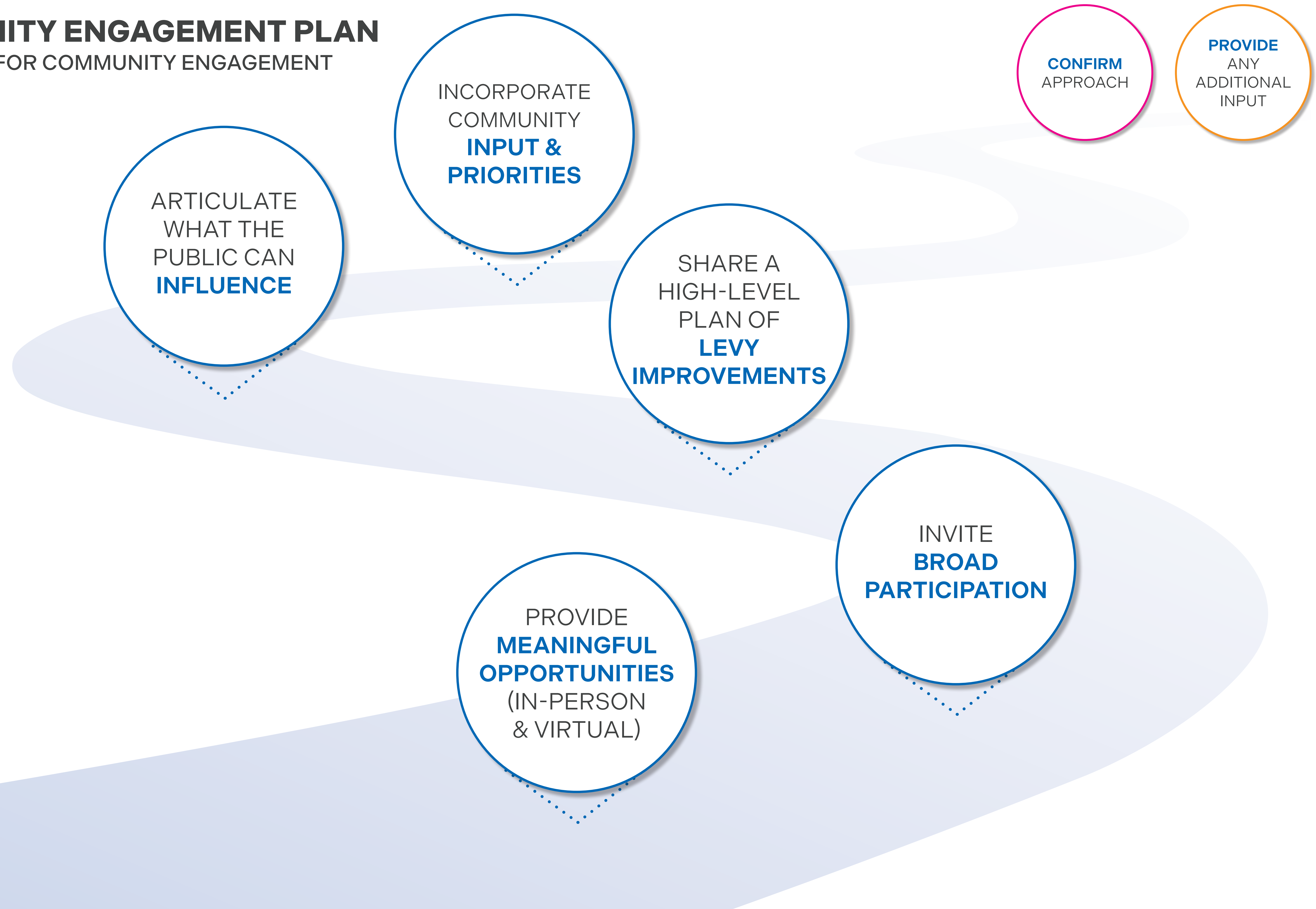
## LEGEND

- SITE PLAN LIMITS**  
Scope of Work
- BIKE SKILLS AREA**  
Existing Boundary  
 Existing Entries
- EXISTING PERIMETER FENCE**
- PRIMARY PARK ENTRY PATH**
- PRIMARY PEDESTRIAN CIRCULATION**
- SECONDARY PEDESTRIAN CIRCULATION**
- ISLAND CREST WAY PATH**
- SITE AMENITY / PLAY FEATURE**
- EXISTING PARKING**



# COMMUNITY ENGAGEMENT PLAN

A ROADMAP FOR COMMUNITY ENGAGEMENT



# COMMUNITY ENGAGEMENT PLAN

## METHODS & TOOLS

CONFIRM  
APPROACH

PROVIDE  
ANY  
ADDITIONAL  
INPUT

Community engagement strategies will be tailored to meet the needs of each audience based on their levels of interest and availability for engagement. The project team will provide clear and accessible information in both digital and print formats so people can engage online or in-person in meaningful ways.

### LET'S TALK

HIGH LEVEL PROJECT  
OVERVIEW

OPPORTUNITIES FOR  
ENGAGEMENT & INPUT

PROJECT UPDATES

CONTACT INFORMATION

### OPEN HOUSE

UP TO 2 MEETINGS/  
EVENTS THAT WILL  
FOCUS ON:

NEEDS & PRIORITIES

INPUT ON VARIOUS PLAY  
EQUIPMENT

FEEDBACK ON CONCEPT  
ALTERNATIVES

### SURVEYS

2 SURVEYS TOTAL:

SURVEY #1  
UNDERSTAND CURRENT  
NEEDS, PRIORITIES,  
& GAPS IN THE PARK  
AMENITIES

SURVEY #2  
GATHER INPUT ON  
CONCEPT ALTERNATIVES  
TO REFINE INTO FINAL  
DESIGN CONCEPT

### PRC MEETINGS

FEEDBACK ON CONCEPT  
ALTERNATIVES

FINAL RECOMMENDATION  
ON SITE PLAN FOR  
REVIEW AND ADOPTION  
BY CITY COUNCIL

### COMMUNICATION TOOLKIT

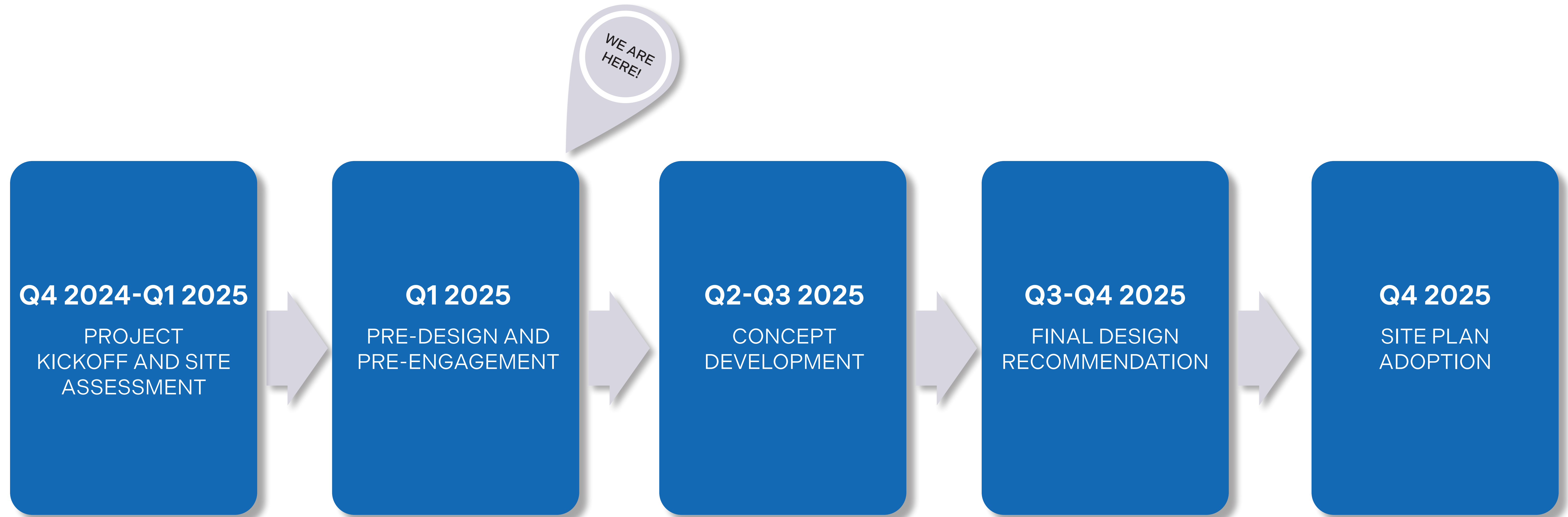
HIGH LEVEL PROJECT  
OVERVIEW

OPPORTUNITIES FOR  
ENGAGEMENT & INPUT

PROJECT UPDATES

CONTACT INFORMATION

# ANTICIPATED PROJECT TIMELINE



# QUESTION FOR THE CITY COUNCIL:

DOES THE CITY COUNCIL APPROVE OF THE SCOPE OF WORK AND COMMUNITY ENGAGEMENT PLAN FOR THE DEANE'S CHILDREN'S PARK SITE PLAN?

**IDENTIFY**  
ANY GAPS

**CONFIRM**  
APPROACH

**PROVIDE**  
ANY  
ADDITIONAL  
INPUT