

Department Report
October 17th, 2024

Open Space
Conservancy Trust



Public Input on Clarke & Groveland Beaches

- The City has launched a digital survey to collect information about how the community currently uses **Clarke and Groveland Beaches**.
- Responses will be accepted until **October 22**.
- Community input will be combined with other background analysis to inform the scope of the planning process for future improvements at these parks.
- Please visit our Let's Talk page to provide input!
www.mercerisland.gov/cgmp



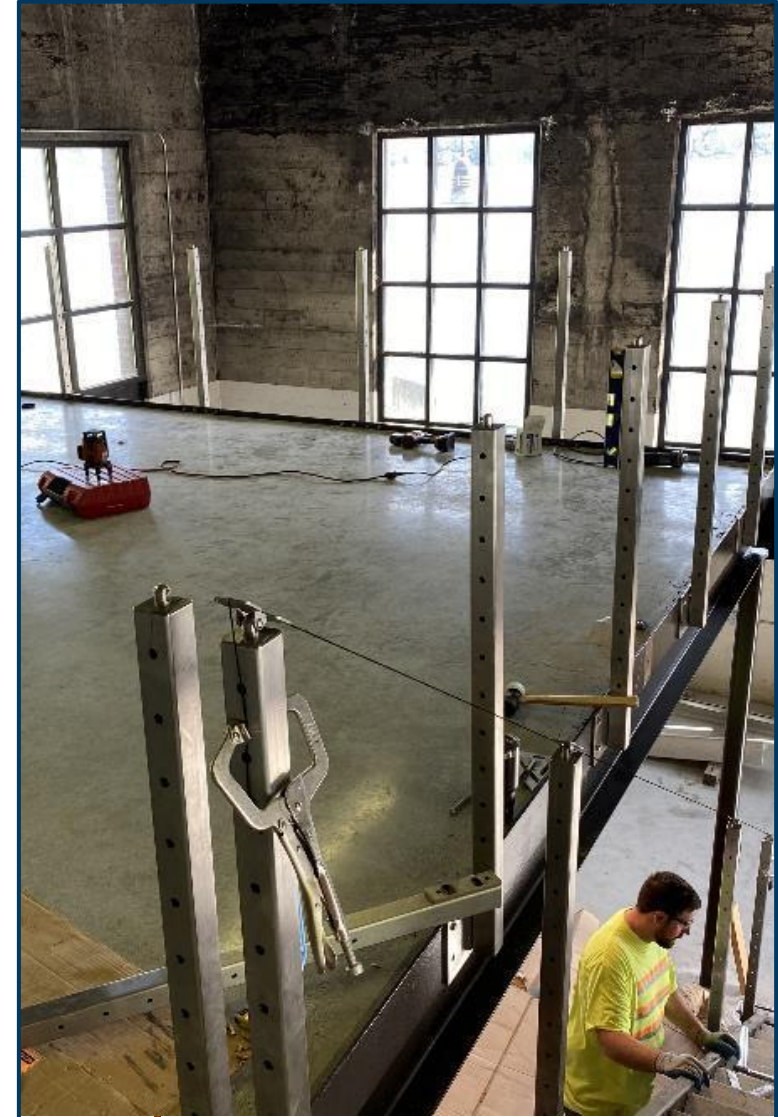
Pickleball Courts at LBP

- Recently Northwest Asphalt placed the second lift of asphalt pavement and the team conducted a flood test to check the court planarity and drainage.
- Staff still anticipate the courts will be playable for pickleball later this month, with temporary striping.
- The final playing surface and markings will be installed next spring- with a Ribbon Cutting to follow!
- Stay updated at: www.mercerisland.gov/lbpcourts



Luther Burbank Boiler Building

- Work continues on the Luther Burbank Boiler Building project.
- Substantial completion on the project is expected in about 2 weeks.



Kick-Off Planting Season!

Register here:

<https://volunteersignup.org/48JMA>



Join Us for

ARBOR DAY

Gallagher Hill Open
Space

Saturday, Oct 19th
10am-2pm

Come celebrate Mercer Island's forests by
helping us plant trees and shrubs.

All ages welcome, gloves, tools and **lunch**
for all volunteers **provided by Pagliacci's**
Pizza.



Scan code to register

Town Center Trick or Treating

Friday, October 25
4 - 6pm

Trick or Treat in Town Center with participating businesses. Look for the pumpkin decal in the windows!

This free-family-friendly event provides our community with the perfect start to their Halloween festivities!



PUMPKIN WALK



SUNDAY, OCTOBER 27 5 - 8 PM
MERCERDALE PARK

Join a fun, family friendly walk along the Mercerdale loop. The path will be lined with a glowing display of carved pumpkins.

WE NEED YOUR PUMPKINS!

Carvers of all ages are encouraged to participate in the display. Carved pumpkins can be dropped off from 12pm - 4pm on the day of the event at Mercerdale Park or the week of at the Mercer Island Community & Event Center.

Sponsored By:

MERCER ISLAND
CITY LIFESTYLE



Parks and Natural Resources

- Seasonal terms ending
- Drinking fountain replacements
- 77th Overpass Landscape refresh



Parks and Natural Resources

- Luther Burbank Historical Sign
- Owl Boxes
- Donation bench replacements
- Winterizing irrigation and plumbing fixtures



Letterboxing update

- Booklets due to Community Center October 31st.
- 16 booklets returned so far.
- Those who turn in booklets will be recognized with:
 - Certificate of completion
 - Prize bag of winter goodies



2025 Open Space Conservancy Trust Board Meeting Schedule

- January 16th
- April 17th
- July 17th
- October 16th

*Quarterly meetings on the third Thursday of the month.
Meetings will take place from 5pm-7pm.*

January						
S	M	T	W	T	F	S
			1	2	3	4
5	6	7	8	9	10	11
12	13	14	15	16	17	18
19	20	21	22	23	24	25
26	27	28	29	30	31	

February						
S	M	T	W	T	F	S
						1
2	3	4	5	6	7	8
9	10	11	12	13	14	15
16	17	18	19	20	21	22
23	24	25	26	27	28	

March						
S	M	T	W	T	F	S
						1
2	3	4	5	6	7	8
9	10	11	12	13	14	15
16	17	18	19	20	21	22
23	24	25	26	27	28	29
30	31					

April						
S	M	T	W	T	F	S
		1	2	3	4	5
6	7	8	9	10	11	12
13	14	15	16	17	18	19
20	21	22	23	24	25	26
27	28	29	30			

May						
S	M	T	W	T	F	S
				1	2	3
4	5	6	7	8	9	10
11	12	13	14	15	16	17
18	19	20	21	22	23	24
25	26	27	28	29	30	31

June						
S	M	T	W	T	F	S
1	2	3	4	5	6	7
8	9	10	11	12	13	14
15	16	17	18	19	20	21
22	23	24	25	26	27	28
29	30					

July						
S	M	T	W	T	F	S
		1	2	3	4	5
6	7	8	9	10	11	12
13	14	15	16	17	18	19
20	21	22	23	24	25	26
27	28	29	30	31		

August						
S	M	T	W	T	F	S
				1	2	
3	4	5	6	7	8	9
10	11	12	13	14	15	16
17	18	19	20	21	22	23
24	25	26	27	28	29	30
31						

September						
S	M	T	W	T	F	S
		1	2	3	4	5
6	7	8	9	10	11	12
13	14	15	16	17	18	19
20	21	22	23	24	25	26
27	28	29	30			

October						
S	M	T	W	T	F	S
		1	2	3	4	
5	6	7	8	9	10	11
12	13	14	15	16	17	18
19	20	21	22	23	24	25
26	27	28	29	30	31	

November						
S	M	T	W	T	F	S
						1
2	3	4	5	6	7	8
9	10	11	12	13	14	15
16	17	18	19	20	21	22
23	24	25	26	27	28	29
30						

December						
S	M	T	W	T	F	S
		1	2	3	4	5
6	7	8	9	10	11	12
13	14	15	16	17	18	19
20	21	22	23	24	25	26
27	28	29	30	31		