

FlexNet Design

Propagation Analysis

PRELIMINARY

14041 - MERCER ISLAND
CITY OF -AM
Mercer Island, WA

RF Engineer: Joel Sedeski
Date: 1/10/2024
Version: 1

Proposed Site Details

Total Site Locations: 6
Total Base station Counts: 6
M400B2 = 6

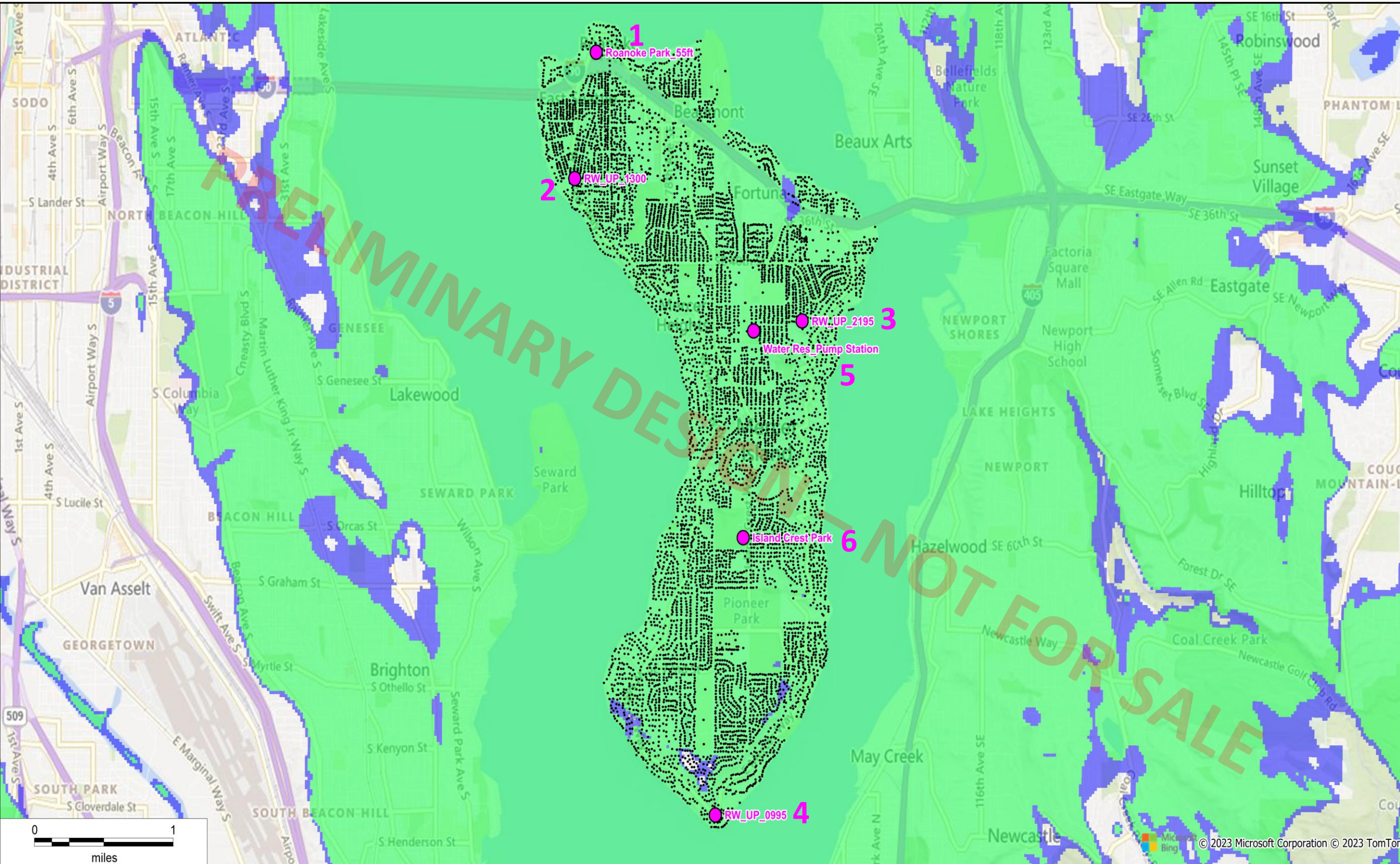
Design Factors

Flex Net Version: V1
Endpoint Type: Water
Smart point Location: Pitset
Above Lid

	Count	%
Total Endpoints Covered	7,790	99.79%
2 Way Coverage	7,696	98.59%
1 Way Coverage	94	1.204%
Total Endpoints Analyzed	7,806	

LEGEND

- 2 Way Coverage
- 1 Way Coverage
- Site Location
- Endpoint Location



This propagation study is based on actual information provided by the utility pertaining to meter type, Smart point Location, potential antennae height on structure, structure height, and structure location. Any changes, deletions and/or additions that are not provided to the design engineers during the creation of this design may result in a study that does not correlate to actual field conditions.

For all tower mounted antennas, a minimum antenna standoff of 3' is required from the tower.

