

East Link Connections Mercer Island City Council

November 9, 2021

Agenda

1. Program goals, scope
2. Link light rail on the Eastside
3. Proposed bus network changes
4. Timeline

East Link Connections Goals

Improve

- Improve mobility for priority populations, as defined by Metro's Mobility Framework

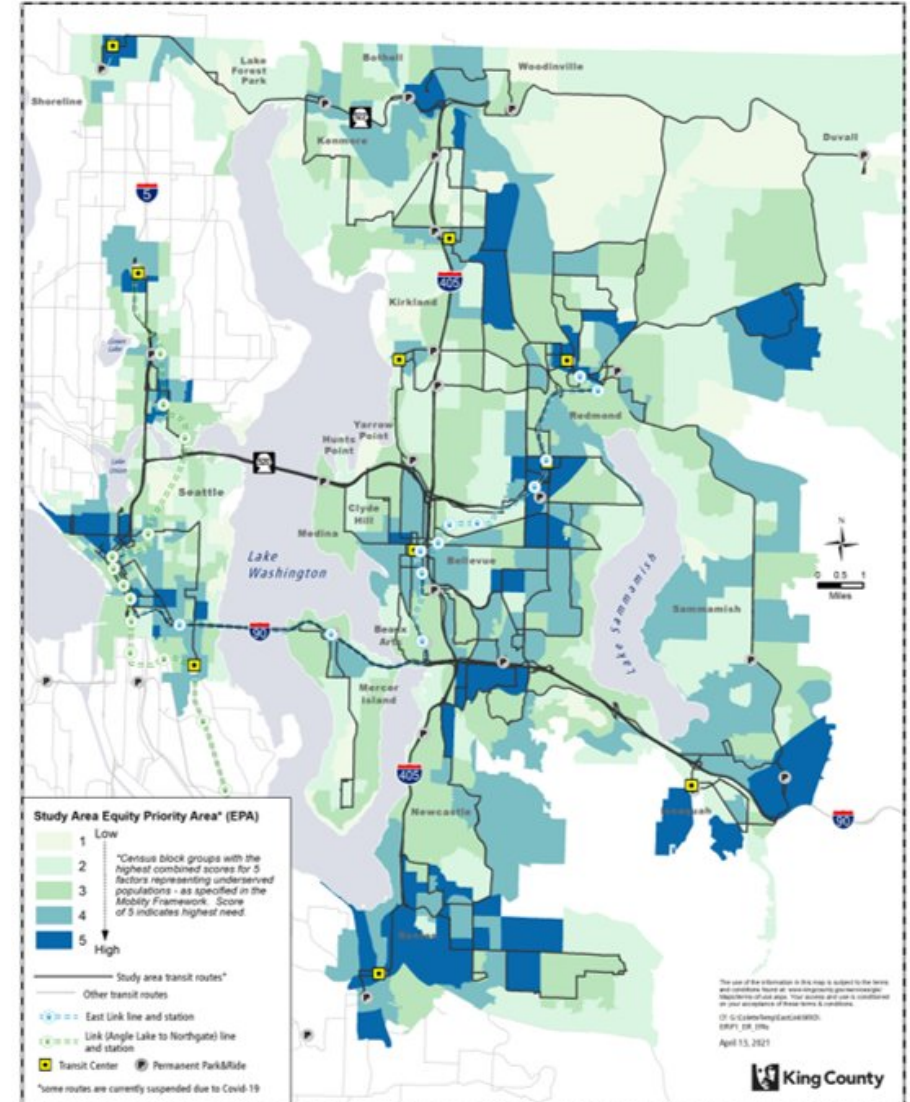
Inform, engage, & empower

- Equitably inform, engage, and empower current and potential customers

Deliver

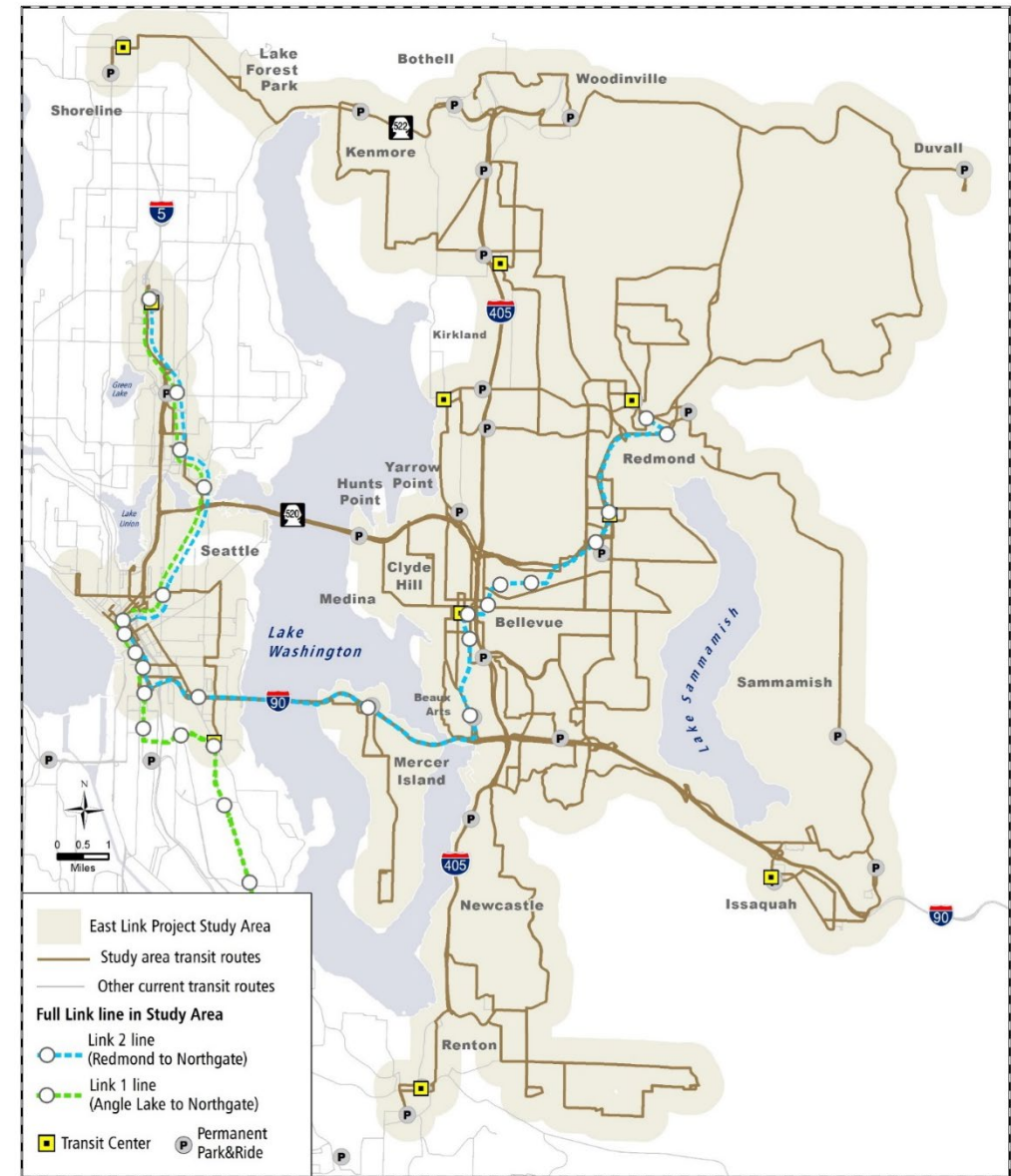
- Deliver integrated service that responds to Link expansion
- Minimize duplication of bus service with Link
- Improve connections to Link
- Be consistent with Metro Connects, and current and future mobility needs

East Link Connections
Phase 1- Equity Impact Review: Study Area Transit Routes and Equity Priority Areas



East Link Connections Project Area Includes

- Bellevue
- Bothell
- Clyde Hill
- Duvall
- Issaquah
- Kenmore
- Kirkland
- Lake Forest Park
- Medina
- Mercer Island
- Newcastle
- Redmond
- Renton
- Sammamish
- Seattle
- Shoreline
- Woodinville
- Yarrow Point



CF: G:\ColetterTemp\EastLink\MXD\C30\C30StudyAreaandRoutes August 30, 2011

How do we evaluate service?

Ridership

- How many people are riding?

Productivity

- Are we spending resources in the best place?

Equity Analysis

- Do our services meet the needs of historically underrepresented community members?
- Do service changes improve service for priority areas?

Public Input and Feedback

- What are riders saying?



Link light rail

- Fast, reliable service free from traffic
- 28 new stations opening by 2024

Link is a people mover

1 light rail train (4 train cars)



10 buses

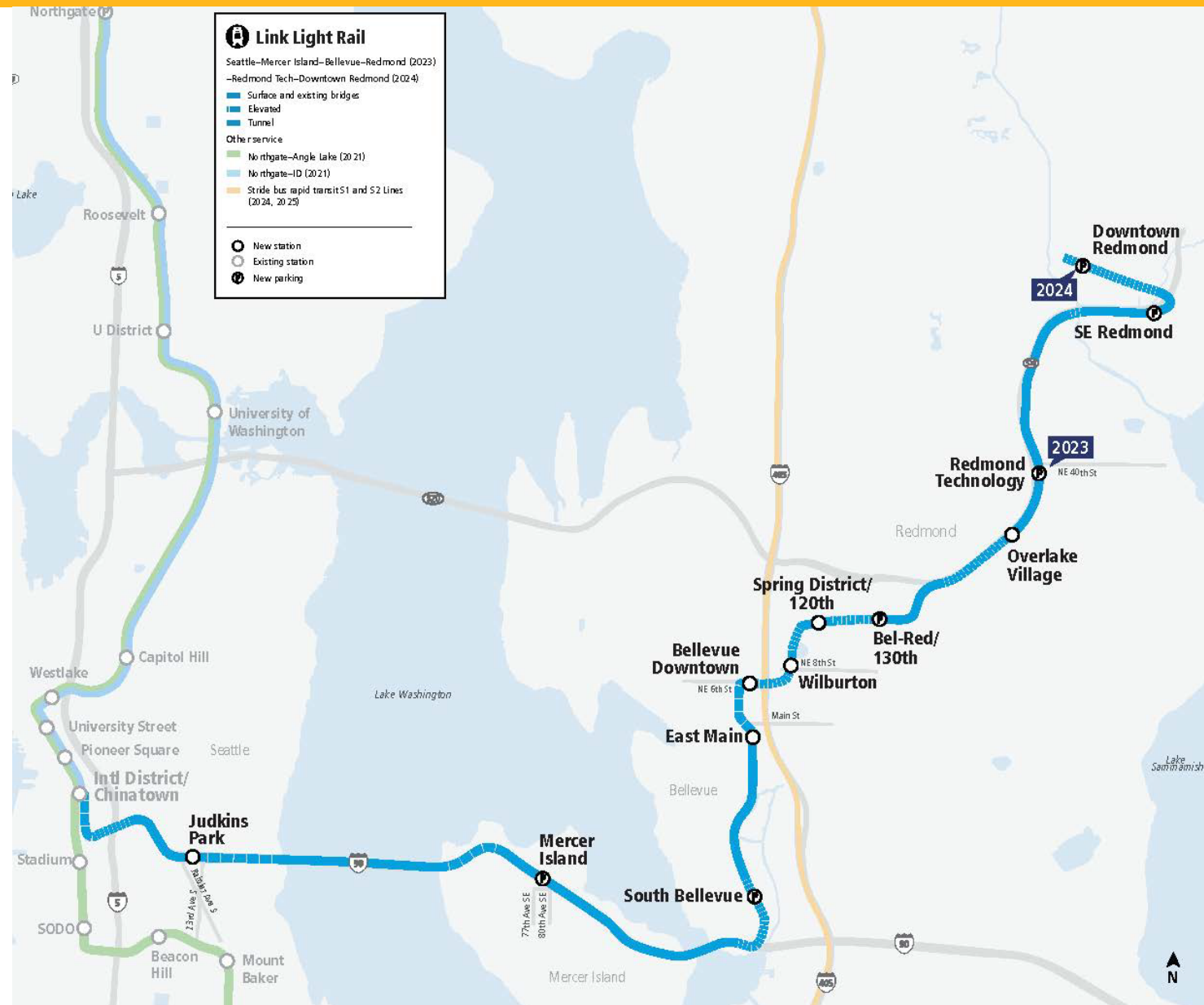


500 cars



Link 2 Line

- Opens: 2023 & 2024
- Length: 17.4 miles; 12 stations
- Service: Every 8 minutes during peak hours
- Projected travel times:
 - 18 min Downtown Redmond to Bellevue
 - 23 min Seattle to Bellevue
 - 50 min South Bellevue to Sea-Tac Airport



East Link Connections Mobility Board

Who?

- Mobility are community members are those who live, work, and travel within east King County, and surrounding communities.

What is their role?

- To advise and collaborate with Metro and Sound Transit to develop and refine a proposed transit network on the Eastside.



East: I-90 corridor, Sammamish, Mercer Island

Routes: 204, 208, 212, 214, 215, 216, 217, 218, 219, 269, 630

Top prioritized needs:

- More service outside peak periods
- More service on weekends
- Maintain frequent service in peak periods
- Real time information technology

Proposed changes

Route 204 – Sunday service added

Route 630 – More direct route to First Hill

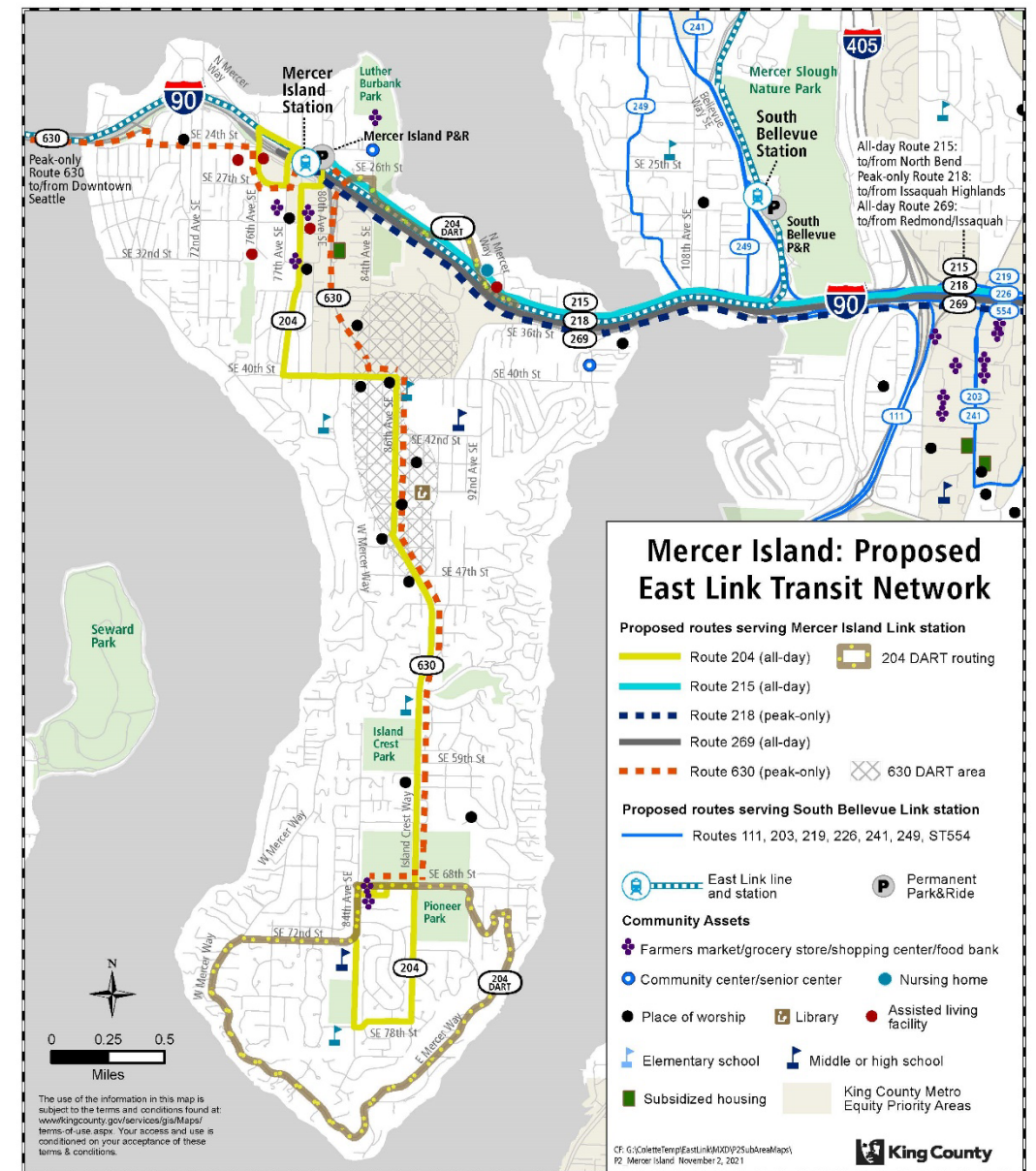
Route 218 – Peak-only Issaquah to Mercer Island

Route 215 – New all-day, all week North Bend, Snoqualmie, Issaquah, Mercer Island

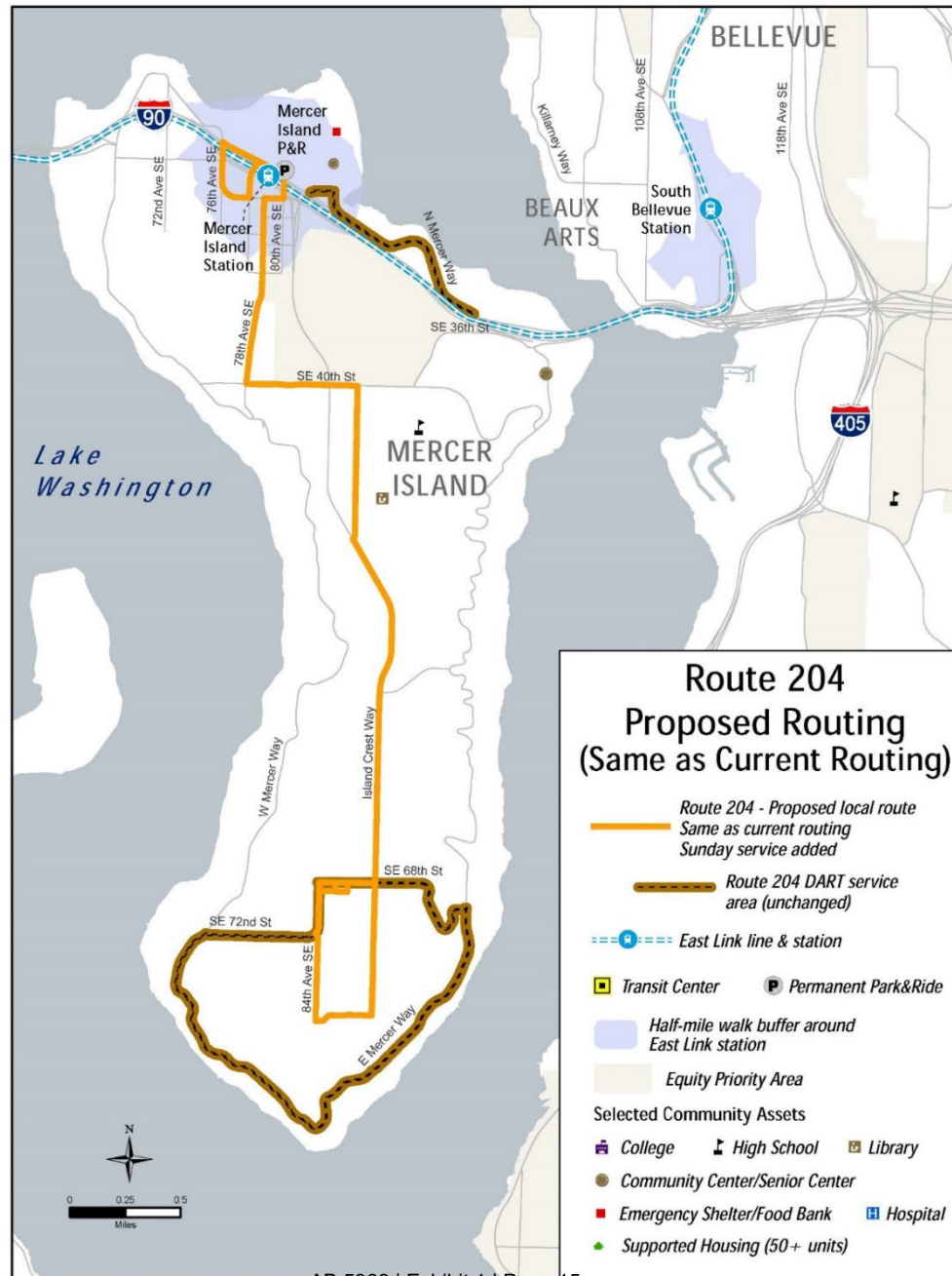
Route 269 – Sunday service added, new connection Issaquah to Mercer Island

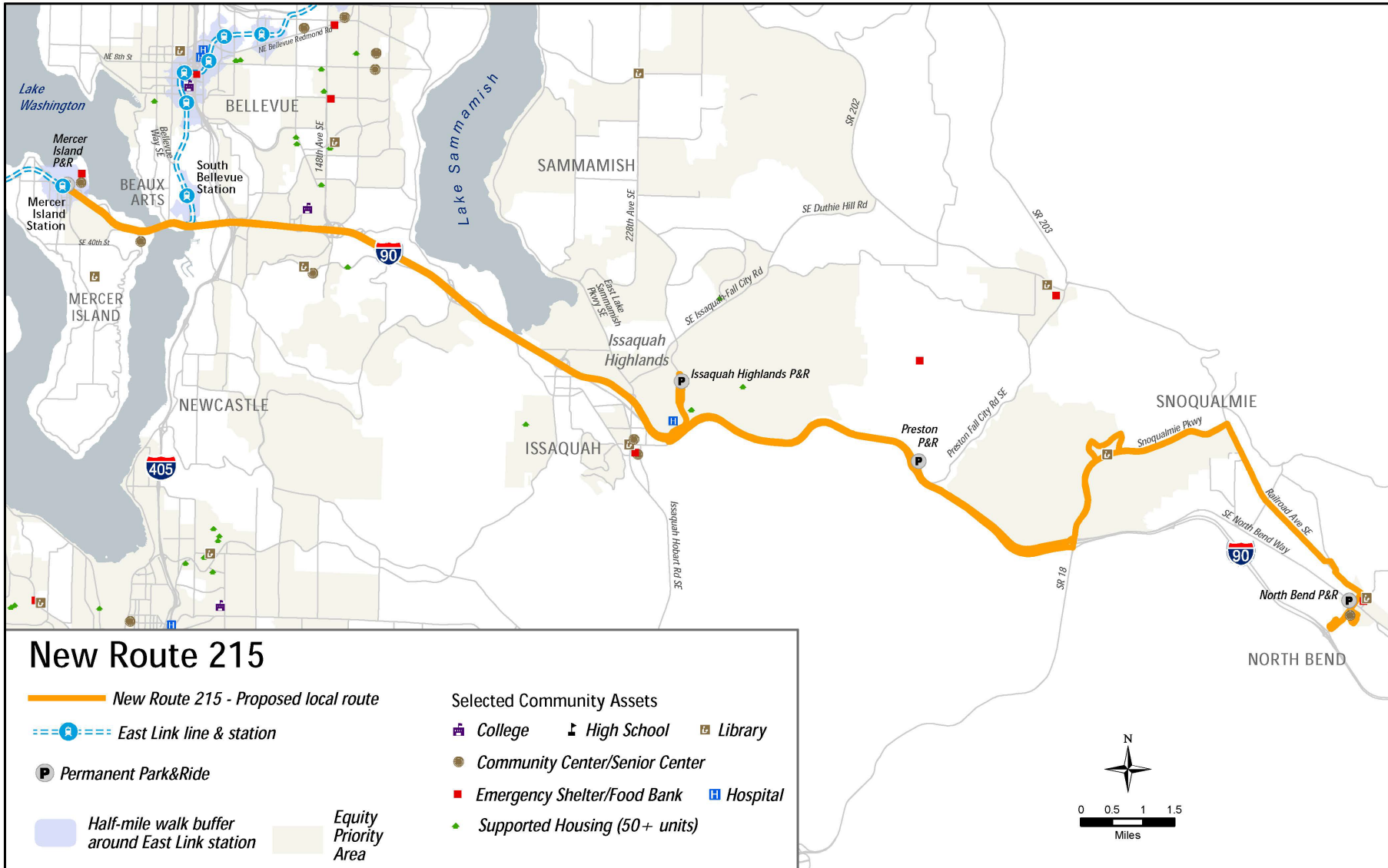
ST 554 – Re-directed to downtown Bellevue via South Bellevue Station

Route 216 - Cancelled



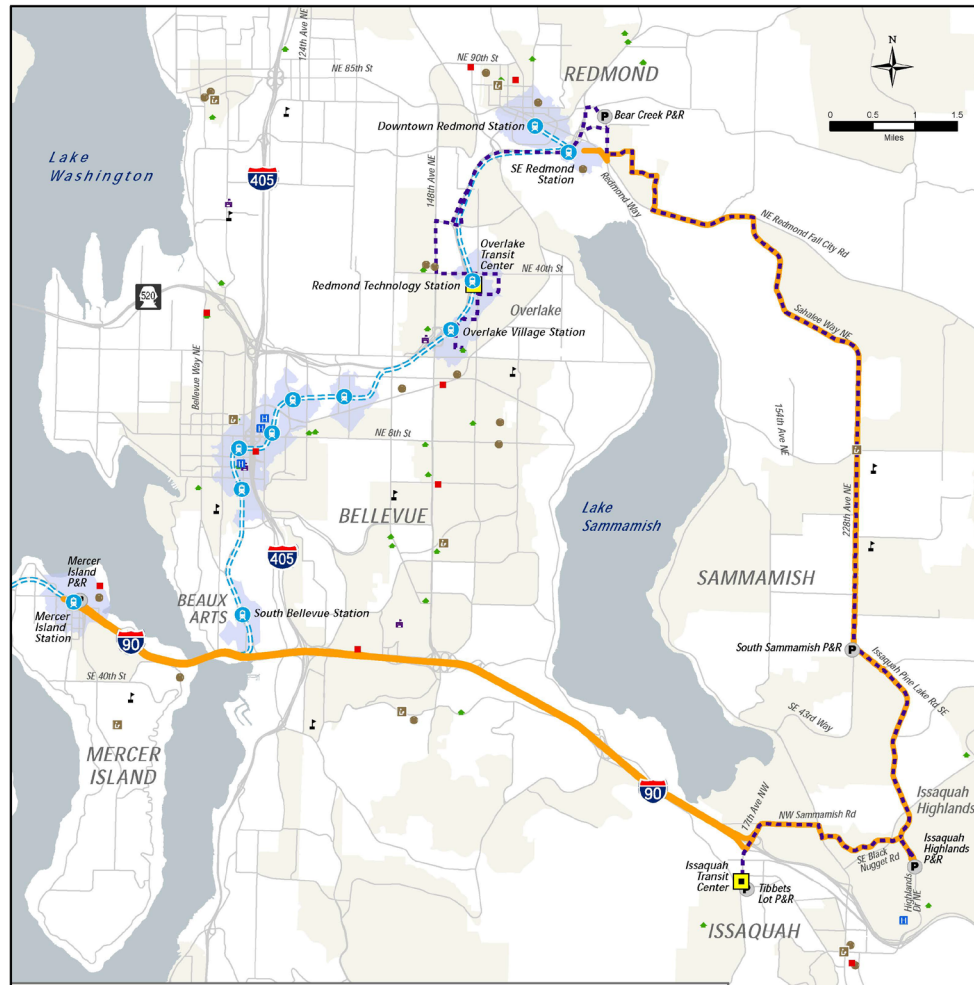






The use of the information in this map is subject to the terms and conditions found at: www.kingcounty.gov/services/gis/Maps/terms-of-use.aspx. Your access and use is conditioned on your acceptance of these terms and conditions.





Route 269 Current and Proposed Routing

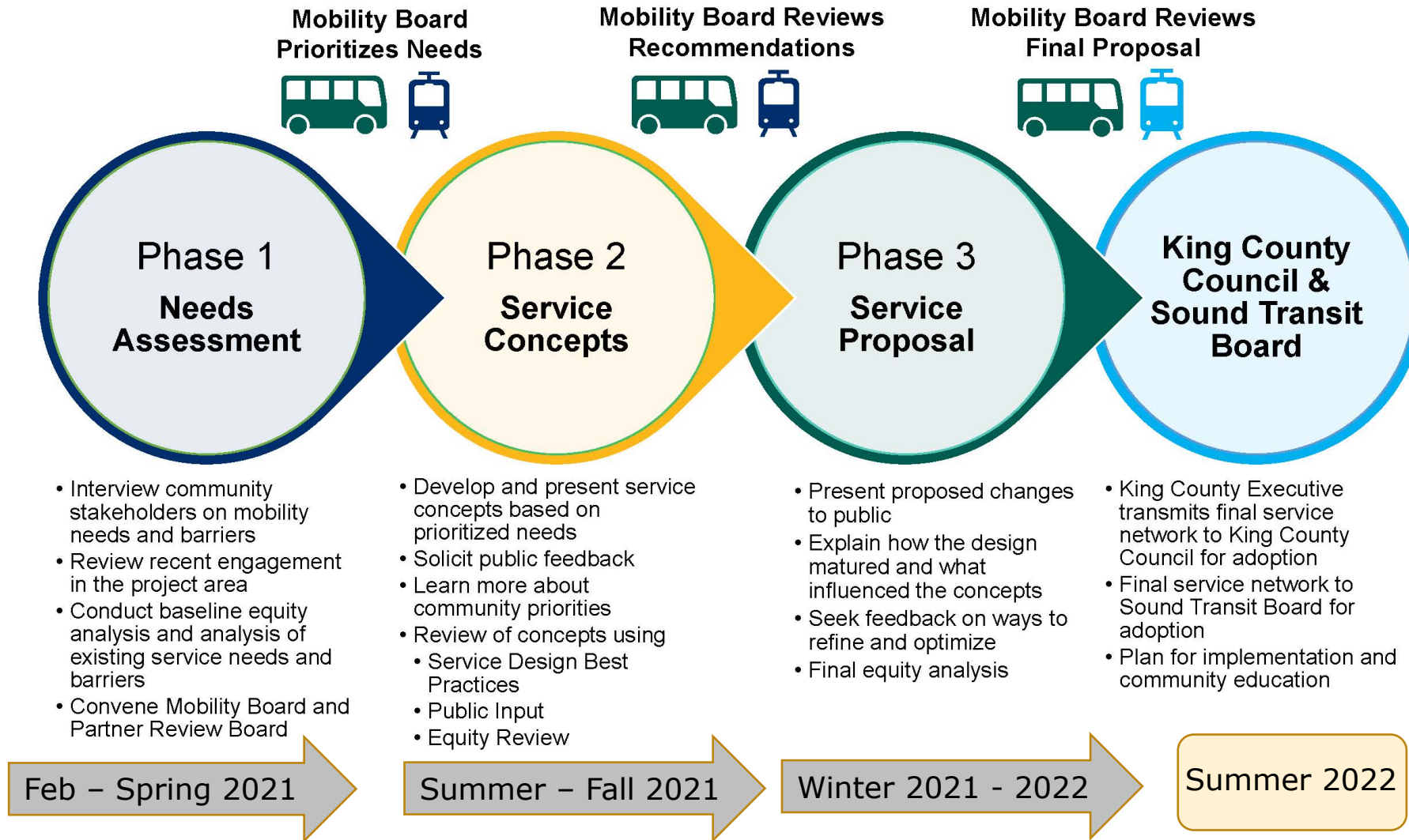
- - - Route 269 - Current local route
- Route 269 - Proposed local route
- - - East Link line & station
- Transit Center
- Permanent Park&Ride
- Half-mile walk buffer around East Link station

Selected Community Assets

- College
- High School
- Library
- Community Center/Senior Center
- Emergency Shelter/Food Bank
- Hospital
- ◆ Supported Housing (50+ units)
- Equity Priority Area

The use of the information in this map is subject to the terms and conditions found at: www.kingcounty.gov/services/911/Maps/terms-of-use.aspx. Your access and use is conditioned on your acceptance of these terms and conditions. G:\Temp\EastLink\MXD\P1\Proposed\RM\Maps\kcmetro-route269proposed August 6, 2021

Engagement Timeline & Next Steps



To see route level maps

Visit elc.participate.online



Thank You!



For more information on East Link Connections Project:
haveasay@kingcounty.gov or call (206) 263-1939

To learn more visit www.elc.participate.online