

INTERVIEW

2021/2022 MERCER ISLAND TOWN
CENTER PARKING STUDY

framework

IN COLLABORATION WITH



FEHR PEERS



OUR TEAM

FRAMEWORK



JEFF ARANGO, AICP
PROJECT MANAGER



LESLEY BAIN, FAIA
PRINCIPAL



BOBO YUANSI CAI
PLANNER / DESIGNER

IDAX



MARK SKAGGS
CHIEF OPERATIONS OFFICER

FEHR & PEERS



KENDRA BREILAND, AICP
PRINCIPAL

WOOD SOLUTIONS



BRETT WOOD, PE, CAPP
PRESIDENT



KYLE CAMPBELL
OPERATIONS MANAGER



CHRIS GRGICH, PE, PTOE
CIVIL ENGINEER

FRAMEWORK

PARKING + PLACEMAKING



LAKWOOD - COLONIAL PLAZA

PROJECT	DOWNTOWN + NEIGHBORHOODS	DATA COLLECTION + ANALYSIS	PUBLIC OUTREACH	ENFORCEMENT	MANAGEMENT STRATEGIES	FINANCIAL ANALYSIS	PARKING CODE STANDARDS	PERMIT PROGRAMS	MOBILITY
Park and Ride Data Collection and Reporting - King County, WA	●	●	●				●	●	
Downtown Strategic Parking Plan - City of Redmond, WA	●	●	●	●	●	●	●	●	●
Downtown Parking Management Oklahoma City, OK	●	●	●	●	●		●		●
Strategic Parking Plan City of Columbus, OH	●	●	●	●	●		●		●
Downtown Parking Strategy City of Olympia, WA	●	●	●	●	●	●	●		●
Downtown Parking Strategy City of Bainbridge Island, WA	●	●	●		●		●		●
Parking Study City of Bremereton, WA*	●	●	●	●	●	●	●	●	●
Town Center Parking Study City of Mercer Island, WA*	●	●	●		●		●		●
Access to Transit Study City of Mercer Island, WA*	●				●				●
SR 28 Parking Management Plan Tahoe Transportation District, NV			●	●	●	●	●		●
Peninsula Parking Study City of Charleston, SC	●	●	●	●	●	●	●		●
Downtown Parking Study* City of Wenatchee, WA	●	●	●	●	●		●		
Downtown Parking Study City of Leavenworth, WA	●	●			●		●		
Restricted Parking Zones Policy Review* City of Seattle, WA	●	●	●	●	●	●	●		●
Parking Strategies Project* City of Redmond, WA	●	●	●		●		●		
Residential Permit Program City of Seatac, WA	●	●		●	●	●			
Right-Size Parking Project* King County, WA	●	●	●		●				

*Performed at a prior firm or agency

EXPERIENCE

CITY OF OLYMPIA

DOWNTOWN PARKING STRATEGY (2017)

ART CROSSINGS PLAN (2017)

ARMORY CREATIVE HUB (2021)

CULTURAL ACCESS (2021)

CITY OF BAINBRIDGE ISLAND

PARKING STRATEGY (2017)

DESIGN FOR BAINBRIDGE | GUIDELINES + STANDARDS (2019)

DESIGN FOR BAINBRIDGE WEBSITE (2021)

ISLAND CENTER SUBAREA PLAN (2021)

HOUSING ACTION PLAN (2021)

CITY OF REDMOND

DOWNTOWN PARKING MANAGEMENT STRATEGIC PLAN (2020)

PARKING STUDY (2008)

REDMOND CENTRAL CONNECTOR (2011)

CITY OF BREMERTON

DOWNTOWN PARKING STUDY (2017)

PARKING STUDY IMPLEMENTATION (2017)

JOINT COMPATIBILITY TRANSPORTATION PLAN (2021)

APPROACH

QUALITY AND RELIABLE DATA

MEANINGFUL PUBLIC ENGAGEMENT

TOOLKIT OF PARKING + PLACEMAKING STRATEGIES

IMPLEMENTATION PLAN

HIGH-QUALITY DELIVERABLES

LIMITATIONS OF 2016 STUDY

- » Targeted scope to support Town Center code project
- » 1.5 Months from kick-off to draft report
- » Two days of data collection in mid-winter
- » Limited public engagement
- » No stakeholder outreach

MEETING BUDGET | PROPOSED SCOPE

TASK 1: PROJECT MANAGEMENT - \$10K

- 1.1 Kick-off Meeting
- 1.2 Project Management
- 1.3 Staff Meetings and Coordination

TASK 2: STAKEHOLDER ENGAGEMENT AND PUBLIC INPUT - \$20K

- 2.1 Stakeholder Engagement Plan
- 2.2 Stakeholder Interviews/Focus Groups
- 2.3 Workshop
- 2.4 Open House
- 2.5 Board and Commission Meetings

TASK 3: PARKING DATA COLLECTION + ANALYSIS - \$20K W/ A \$10K MANAGEMENT RESERVE

- 3.1 Data Collection Plan
- 3.2 Data Collection and Analysis
- 3.3 Activation Assessment
- 3.4 Regulations Audit
- 3.5 Parking Data Collection + Analysis Report

TASK 4: FINAL REPORT + IMPLEMENTATION STRATEGY - \$20K

- 4.1 Parking Strategy Framework
- 4.2 Draft Report + Implementation Strategy
- 4.3 Final Report + Implementation Strategy

MEETING BUDGET | PROPOSED TIMELINE



DATA COLLECTION APPROACH

CONFIRM + UPDATE PARKING INVENTORY FROM 2016

ONE-DAY COLLECTION IN SPRING OF 2022 -\$3-\$5K

Public On- and Off-Street Facilities

Valid Sample of Private Facilities

ANALYZE RESULTS AND COMPARE TO 2016 DATA

IDENTIFY AREAS OF HIGH-DEMAND THAT MAY WARRANT ADDITIONAL COLLECTION

REVIEW OTHER TRANSPORTATION AND TRANSIT DATA

SUPPORT PROGRAMMATIC DEVELOPMENT OF DATA COLLECTION PROGRAM AS NEEDED

OUR EXPERIENCES

REDMOND DOWNTOWN PARKING MANAGEMENT

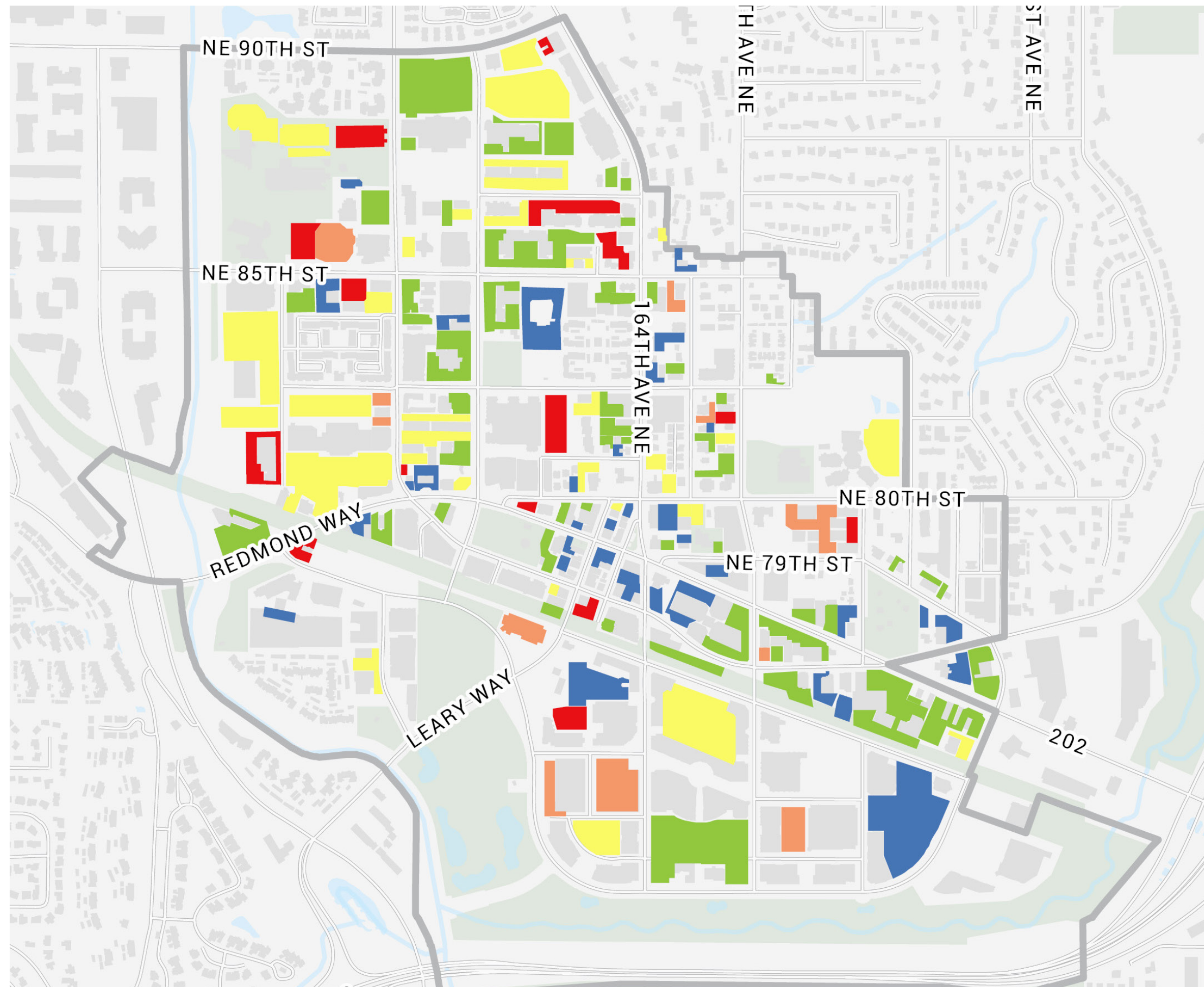


PROJECT SCOPE

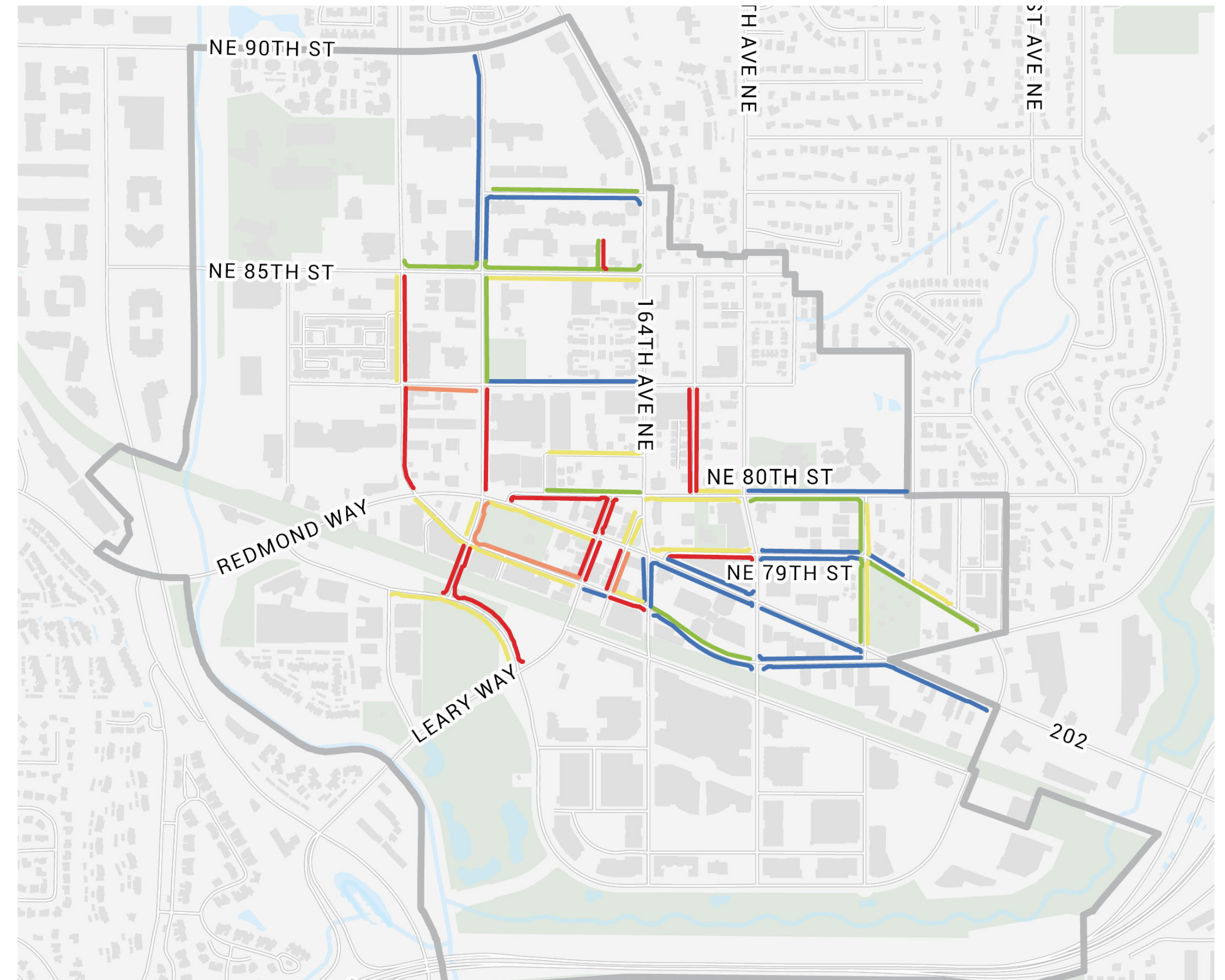
- ON- AND OFF-STREET DATA COLLECTION
- INITIAL SYSTEM-WIDE COLLECTION FOLLOWED BY TARGETED COLLECTION IN HIGHER DEMAND AREAS
- STAKEHOLDER ADVISORY COMMITTEE
- CITY STAFF ADVISORY COMMITTEE
- STORYMAP
- BEST PRACTICES REVIEW
- IMPLEMENTATION PLAN (ADOPTED BY COUNCIL IN SEPTEMBER 2020)
- ASSESSMENT OF DOWNTOWN STREETS
- STRATEGIES REPORT

OUR EXPERIENCES

REDMOND DOWNTOWN PARKING MANAGEMENT



OFF-STREET OCCUPANCY



ON-STREET OCCUPANCY

WHY FRAMEWORK?

INTERDISCIPLINARY TEAM WITH EXPERIENCE WORKING TOGETHER

EXPERTISE IN DATA COLLECTION, ANALYSIS, AND COMMUNICATION

SUCCESS WITH BOTH PARKING AND PLACEMAKING

ABILITY TO SOLVE COMPLEX ISSUES THROUGH ENGAGEMENT TO ACHIEVE COMMUNITY SUPPORT

CLIENT REFERENCES AND TRACK RECORD



THANK YOU!

framework

IN COLLABORATION WITH



FEHR & PEERS



Geographic Scales of Analysis

The existing conditions and context analysis consider the... a variety of scales. The regional context looks a... at found, where commuters travel... and visitors fr