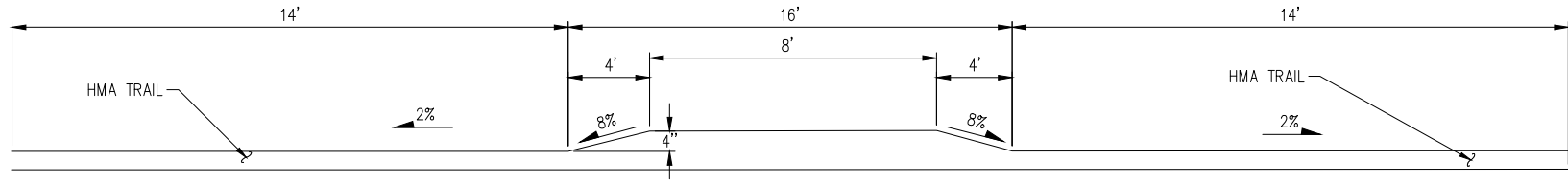
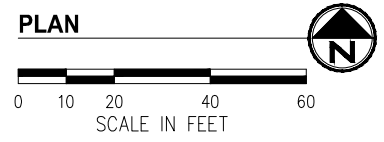
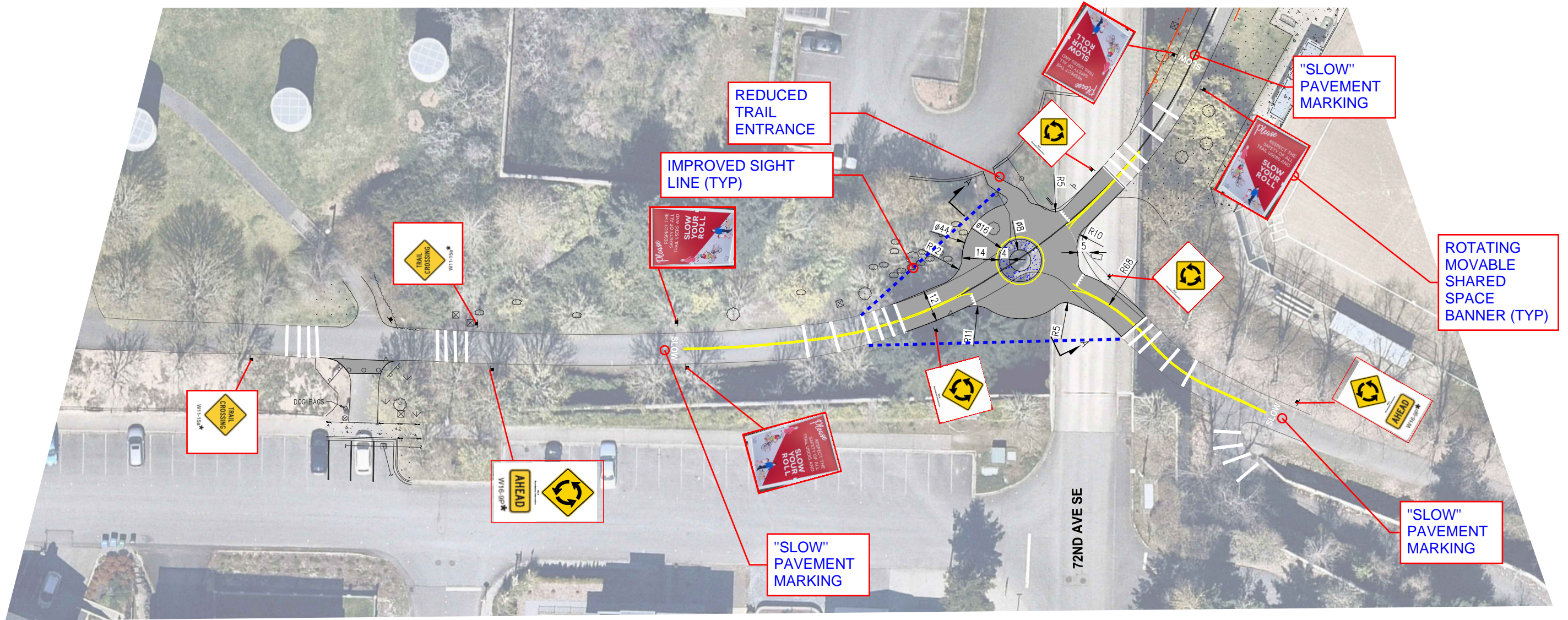


K:\PROJECTS\MERCER IS\21098-Aubrey Davis Park Improvements\DESIGN\Drawings\Working\X21098PRP_PRC_OPT 1.dwg 2/20/2023 3:05 PM



SECTION A-A

| NO. | DATE | BY | APPR. | REVISIONS |
|-----|------|----|-------|-----------|
| | | | | |
| | | | | |
| | | | | |
| | | | | |

| | | | |
|---------------------|------|-------------------------------------|------|
| Approved By | | X21098PRP_PRC_OPT 1.dwg FILENAME | |
| ENGINEERING MANAGER | DATE | DESIGNED BY | DATE |
| PROJECT MANAGER | DATE | DRAWN BY | DATE |
| PROJECT ENGINEER | DATE | CHECKED BY | DATE |

KPG
PSOMAS

Seattle
3131 Elliott Avenue, Suite 400
Seattle, WA 98121 206.286.1640
Tacoma | Wenatchee | KPG.com

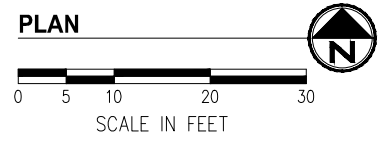
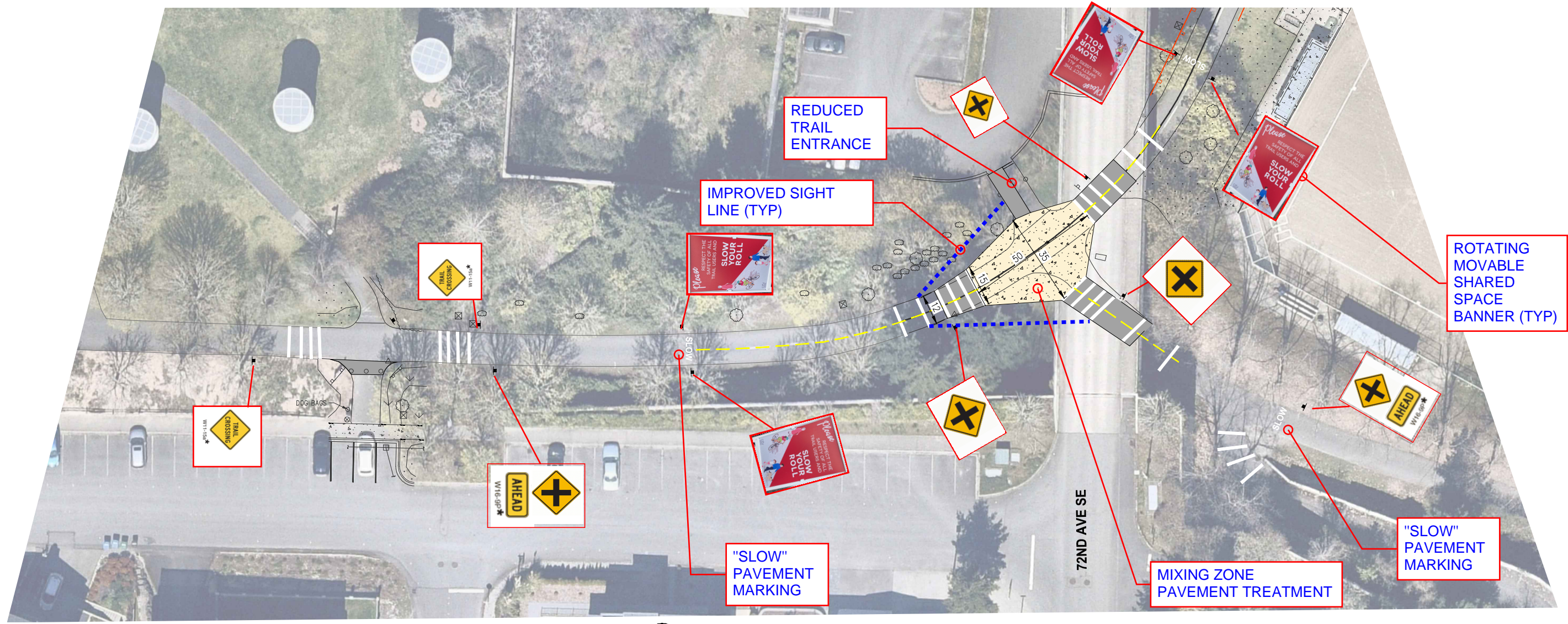
**30% REVIEW
SUBMITTAL**



**CITY OF MERCER ISLAND
AUBREY DAVIS PARK
TRAIL SAFETY IMPROVEMENTS**

| | |
|-----------------------|--------------------------|
| OPTION 1 ROUNDBOUT | |
| KPG PROJECT No. --- | SHT <u>1</u> OF <u>3</u> |

K:\PROJECTS\MERCER IS\21098-Aubrey Davis Park Improvements\DESIGN\Drawings\Working\X21098PRP_PRC_OPT 2.dwg 2/22/2023 1:46 PM



| NO. | DATE | BY | APPR. | REVISIONS |
|-----|------|----|-------|-----------|
| | | | | |
| | | | | |
| | | | | |

| Approved By | | X21098PRP_PRC_OPT 2.dwg FILENAME | |
|---------------------|------|-------------------------------------|------|
| ENGINEERING MANAGER | DATE | DESIGNED BY | DATE |
| PROJECT MANAGER | DATE | DRAWN BY | DATE |
| PROJECT ENGINEER | DATE | CHECKED BY | DATE |

KPG
PSOMAS

Seattle
3131 Elliott Avenue, Suite 400
Seattle, WA 98121 206.286.1640
Tacoma | Wenatchee | KPG.com

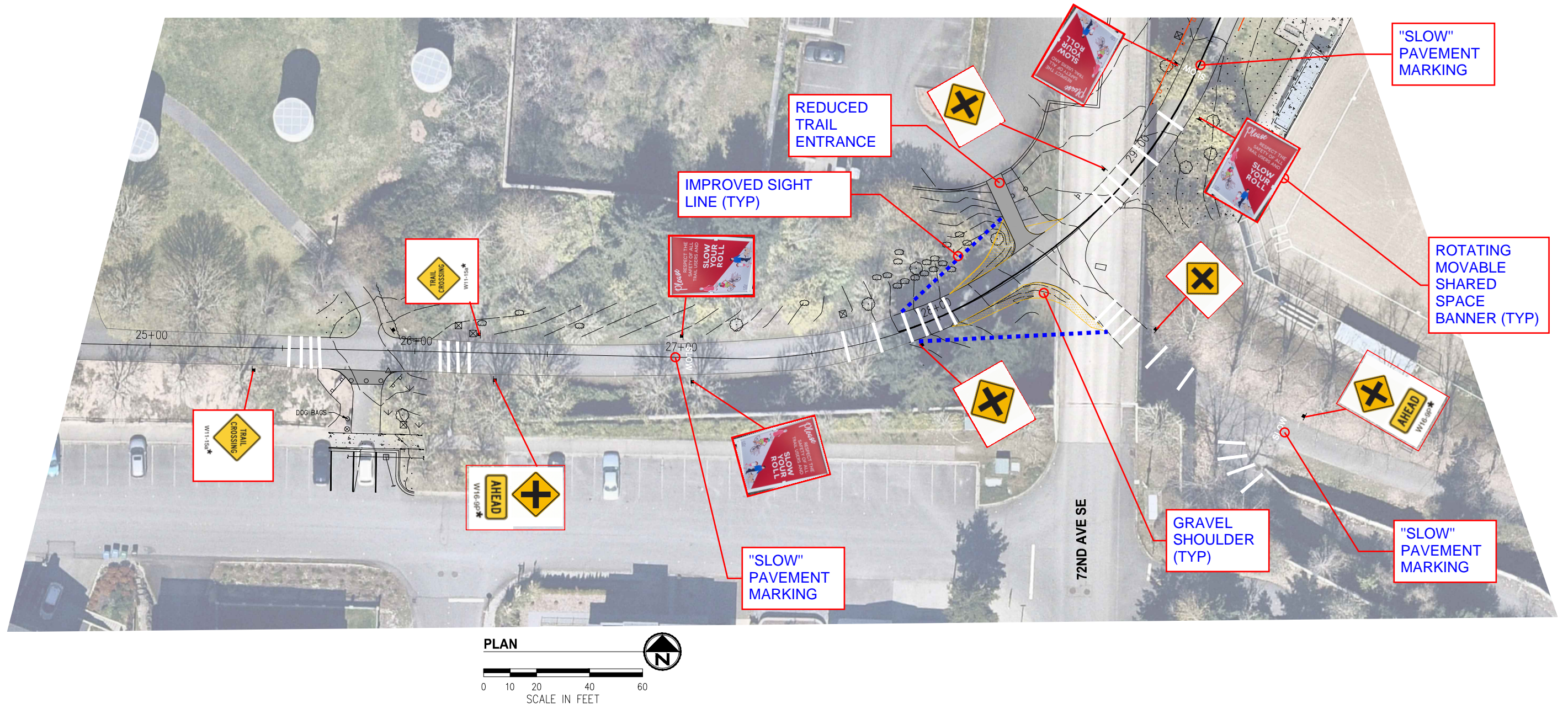
**30% REVIEW
SUBMITTAL**



CITY OF MERCER ISLAND
AUBREY DAVIS PARK
TRAIL SAFETY IMPROVEMENTS

| OPTION 2.1 MIXING ZONE | |
|---------------------------|--------------------------|
| KPG PROJECT No. --- | SHT <u>2</u> OF <u>3</u> |

K:\PROJECTS\MERCER IS\21098-Aubrey Davis Park Improvements\DESIGN\Drawings\Working\21098PRP_PRC_OPT 3.dwg 2/20/2023 3:07 PM



| NO. | DATE | BY | APPR. | REVISIONS |
|-----|------|----|-------|-----------|
| | | | | |
| | | | | |
| | | | | |
| | | | | |

| | | | |
|---------------------|------|-------------------------------------|------|
| Approved By | | X21098PRP_PRC_OPT 3.dwg FILENAME | |
| ENGINEERING MANAGER | DATE | DESIGNED BY | DATE |
| PROJECT MANAGER | DATE | DRAWN BY | DATE |
| PROJECT ENGINEER | DATE | CHECKED BY | DATE |

KPG
PSOMAS
Seattle
3131 Elliott Avenue, Suite 400
Seattle, WA 98121 206.286.1640
Tacoma | Wenatchee | KPG.com

**30% REVIEW
SUBMITTAL**



**CITY OF MERCER ISLAND
AUBREY DAVIS PARK
TRAIL SAFETY IMPROVEMENTS**

| | |
|--------------------------------------|--------------------------|
| OPTION 3 CHANNELIZATION & SIGNAGE | |
| KPG PROJECT No. --- | SHT <u>3</u> OF <u>3</u> |