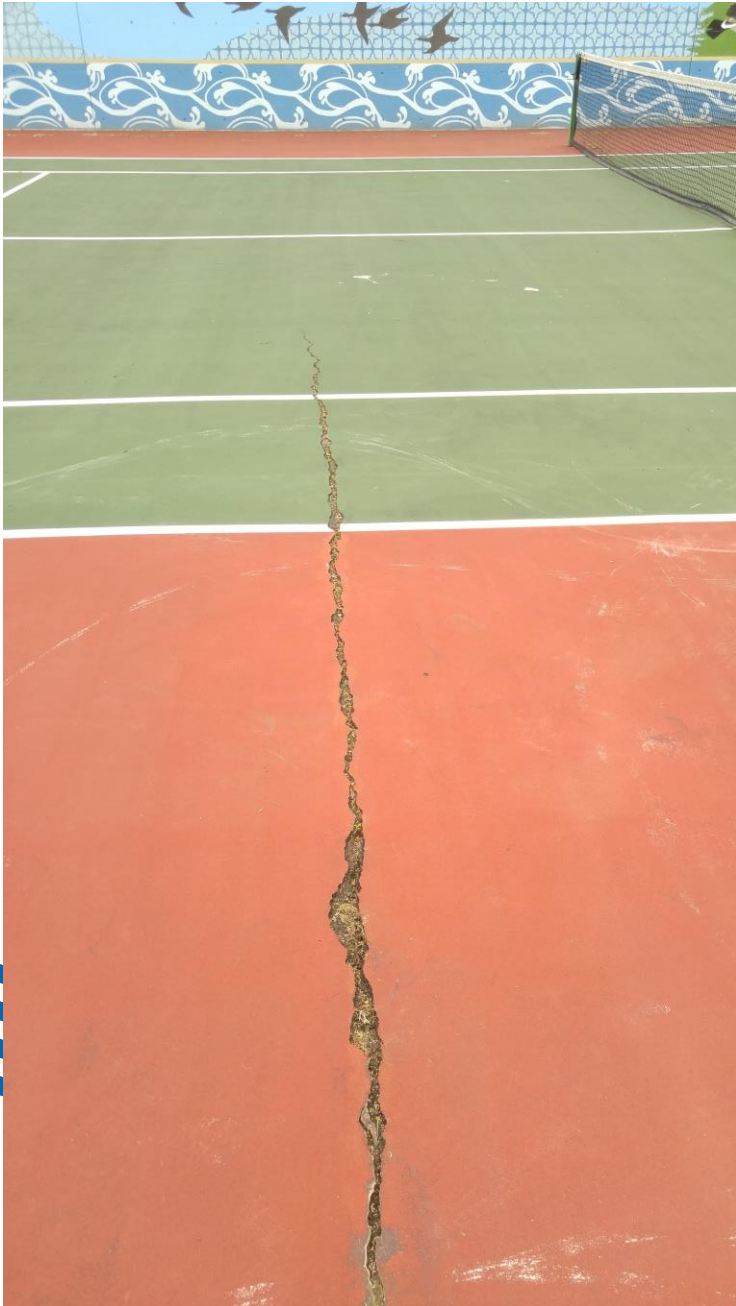


# PA0119: Luther Burbank Park Sport Courts Renovation

Parks & Recreation Commission  
March 2, 2023





## Condition of the Courts

- Three sport courts available for first-come, first-served play during park hours
- Built in 1972 below-grade on dense soil; subgrade has settled over the last 50 years
- Courts suffered from major root intrusions and became wavy, affecting play and general use.
- City repaired extensive cracking in 2018.
- Renovations approved in the 2023-2024 City Budget and Capital Improvement Program

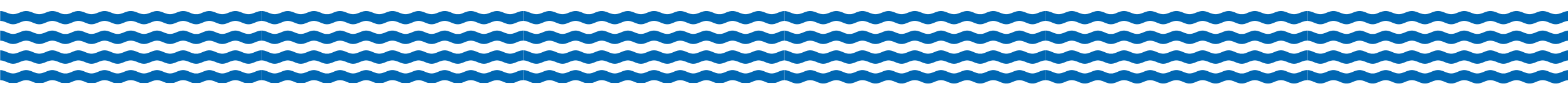


# Pickleball at Luther Burbank Park

- MICEC Pickleball stopped when facility closed in March 2020 due to the pandemic
- Community members worked with City to clean up the courts, return the nets, and temporarily stripe the courts for pickleball
- Shared-use courts still open for first-come, first-served play

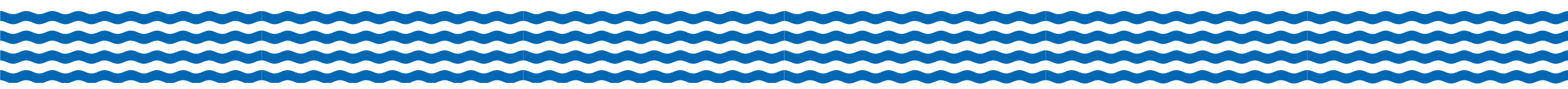
# King County Parks Capital & Open Space Grant

- Grant program funded by the King County Parks Levy
- City received funds to design and renovate the Luther Burbank courts in 2023/2024
- Grant scope included:
  - **Permanently striping two courts for pickleball**, for a total of six dedicated pickleball courts
  - **Striping the third court for tennis/pickleball shared-use**, resulting in two pickleball courts and one tennis court
- The **third tennis court** is the focus of our discussion tonight.



# Managing a Multi-Use Facility

- Difficult to **maintain the experience** for each sport
- Pose **operational challenges**, including when facilities are used on first-come, first-served basis
- **2022 PROS Plan** found access to pickleball courts and to tennis courts of equal importance among survey respondents and advises that “pickleball courts are most successful if clustered rather than spread” through park system



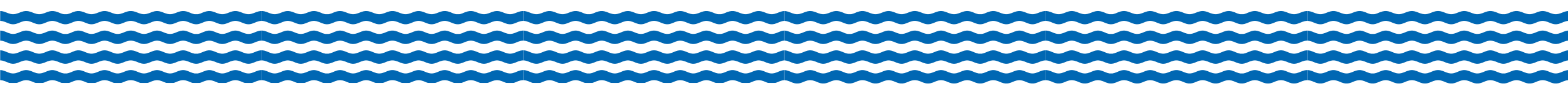
# Additional Public Comment Received

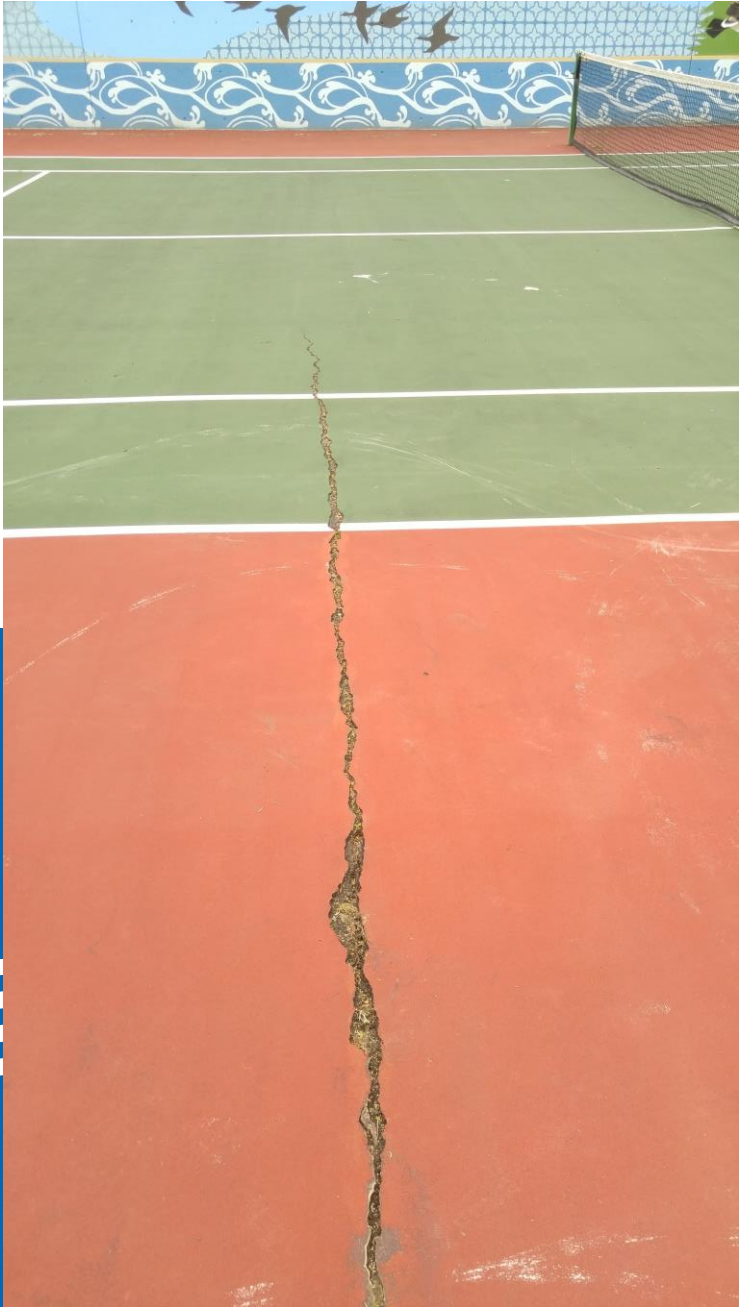
- 50 comments e-mailed to PRC
- Themes from the comments
  - Sports have different pace of play, which impacts court turnover/wait times.
  - Players of both sports prefer to play on dedicated courts over shared-use.
  - Support for permanent striping for eight pickleball courts



# Recommendation + Next Steps

- Staff recommend permanently striping the third court for pickleball use instead of striping for shared tennis/pickleball use.
- Number of pickleball courts and court configuration would be finalized during design
- Renovated facility would still be used on a first-come, first-served basis and be available for other sport court activities but would be permanently reconfigured/striped for pickleball
- Next steps include:
  - Update grant scope with King County – Grant Manager has indicated that there shouldn't be any impacts to grant funding with this change
  - Finalize design – Staff will update the PRC on progress at future meeting(s)
  - Construct the project – Anticipated to take place over two phases in Fall 2023 and Spring 2024





Questions?

