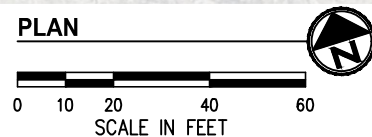
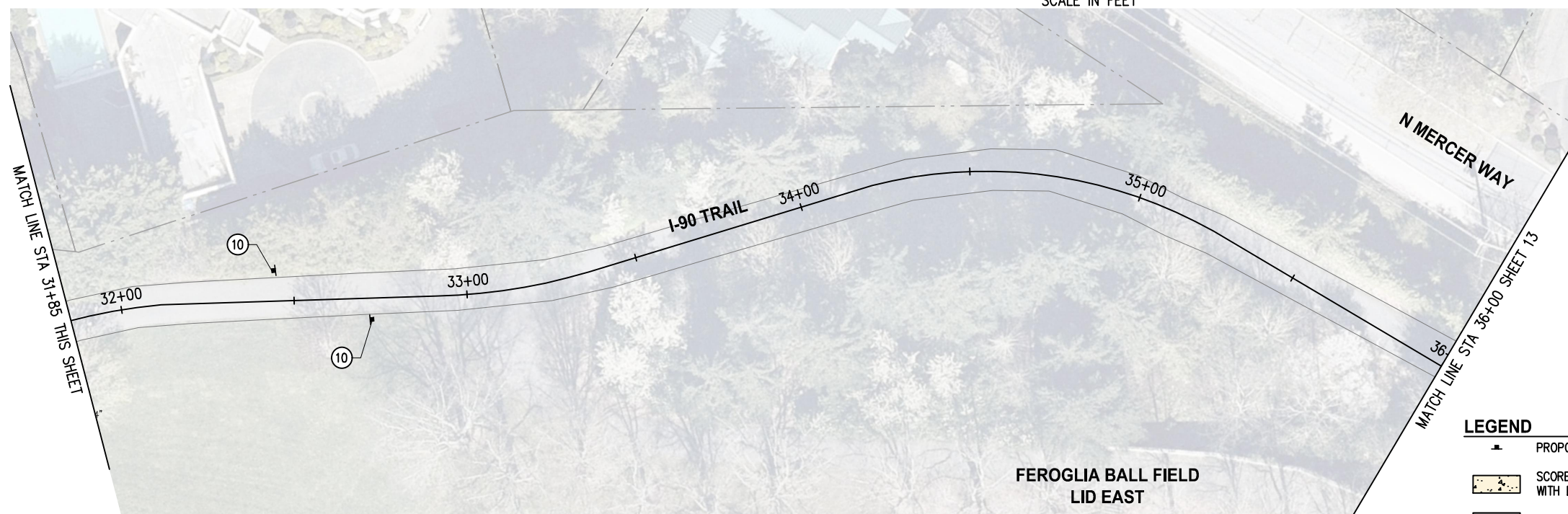
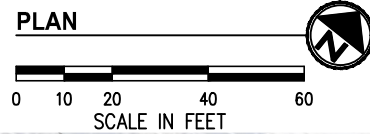
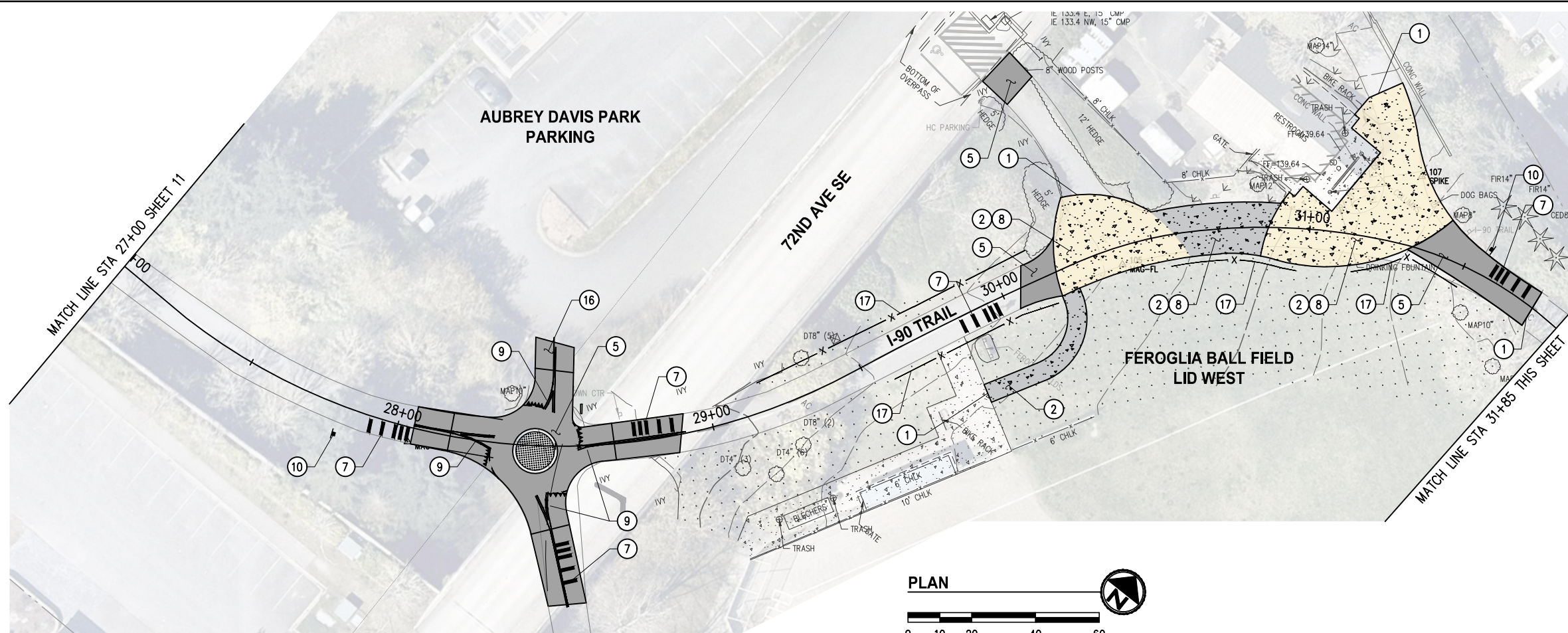
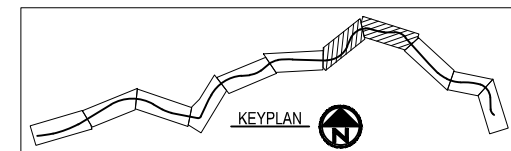


K:\PROJECTS\MERCER IS\21098-Aubrey Davis Park Improvements\DESIGN\Drawings\Contract\21098TRAIL.dwg 6/21/2022 8:37 AM



**LEGEND**

	PROPOSED SIGN
	SCORED CEMENT CONCRETE TRAIL WITH DECORATIVE COLOR TREATMENT
	HMA TRAIL OR PAVEMENT
	DETECTABLE WARNING SURFACE
	CEMENT CONCRETE TRAIL



**GENERAL NOTES**

- CONTRACTOR SHALL SEQUENCE REMOVAL OF EXISTING FEATURES WITH CONSTRUCTION OF NEW ROADWAY ELEMENTS TO MINIMIZE IMPACTS TO PROPERTY OWNERS, TRAIL USERS, TRAFFIC FLOW, AND THE ENVIRONMENT.
- CONTRACTOR SHALL PROVIDE AND MAINTAIN TEMPORARY PEDESTRIAN ROUTE AROUND CONSTRUCTION ACTIVITY FOR THE DURATION OF CONSTRUCTION.

**CONSTRUCTION NOTES**

- MATCH EXISTING.
- CONSTRUCT CEMENT CONC SIDEWALK. SEE TYPICAL SECTION, SHEET 15.
- CONSTRUCT CEMENT CONC CURB AND GUTTER PER COMI STANDARD DETAILS ST-14.
- INSTALL HMA CL 1/2" PG58H-22 FOR NEW PAVEMENT. SEE TYPICAL SECTIONS, SHEET 15.
- INSTALL HMA CL 1/2" PG58H-22 FOR WALKWAY. SEE TYPICAL SECTIONS, SHEET 15.
- INSTALL THERMOPLASTIC CROSSWALK PER DETAIL, SHEET 15.
- INSTALL THERMOPLASTIC BAR PER DETAIL, SHEET 15.
- INSTALL SCORED AND COLORED CEMENT CONCRETE FOR PLAZA. SEE SITE ELEMENT PLANS, SHEET 16-18.
- INSTALL 4" WIDE, YELLOW, PAINT LINE.
- INSTALL REGULATORY SIGN.
- INSTALL WAYFINDING SIGN.
- INSTALL GRAVEL SHOULDER PER DETAIL, SHEET 15.
- LAWN RESTORATION.
- INSTALL DETECTABLE WARNING SURFACE.
- INSTALL CEMENT CONCRETE CURB RAMP, TYP, PERPENDICULAR A.
- REMOVE BOLLARDS WITHIN PAVEMENT LIMITS.
- INSTALL FENCING.

NO.	DATE	BY	APPR.	REVISIONS

Approved By

ENGINEERING MANAGER	DATE	DESIGNED BY	DATE
PROJECT MANAGER	DATE	DRAWN BY	DATE
PROJECT ENGINEER	DATE	CHECKED BY	DATE

21098TRAIL.dwg  
FILENAME

**KPG**  
**PSOMAS**

Seattle  
3131 Elliott Avenue, Suite 400  
Seattle, WA 98121 206.286.1640  
Tacoma | Wenatchee | KPG.com

**30% REVIEW  
SUBMITTAL**



CITY OF MERCER ISLAND  
AUBREY DAVIS PARK  
TRAIL SAFETY IMPROVEMENTS

TRAIL IMPROVEMENT PLANS  
STA 27+00 TO STA 36+00