



# CITY OF MERCER ISLAND

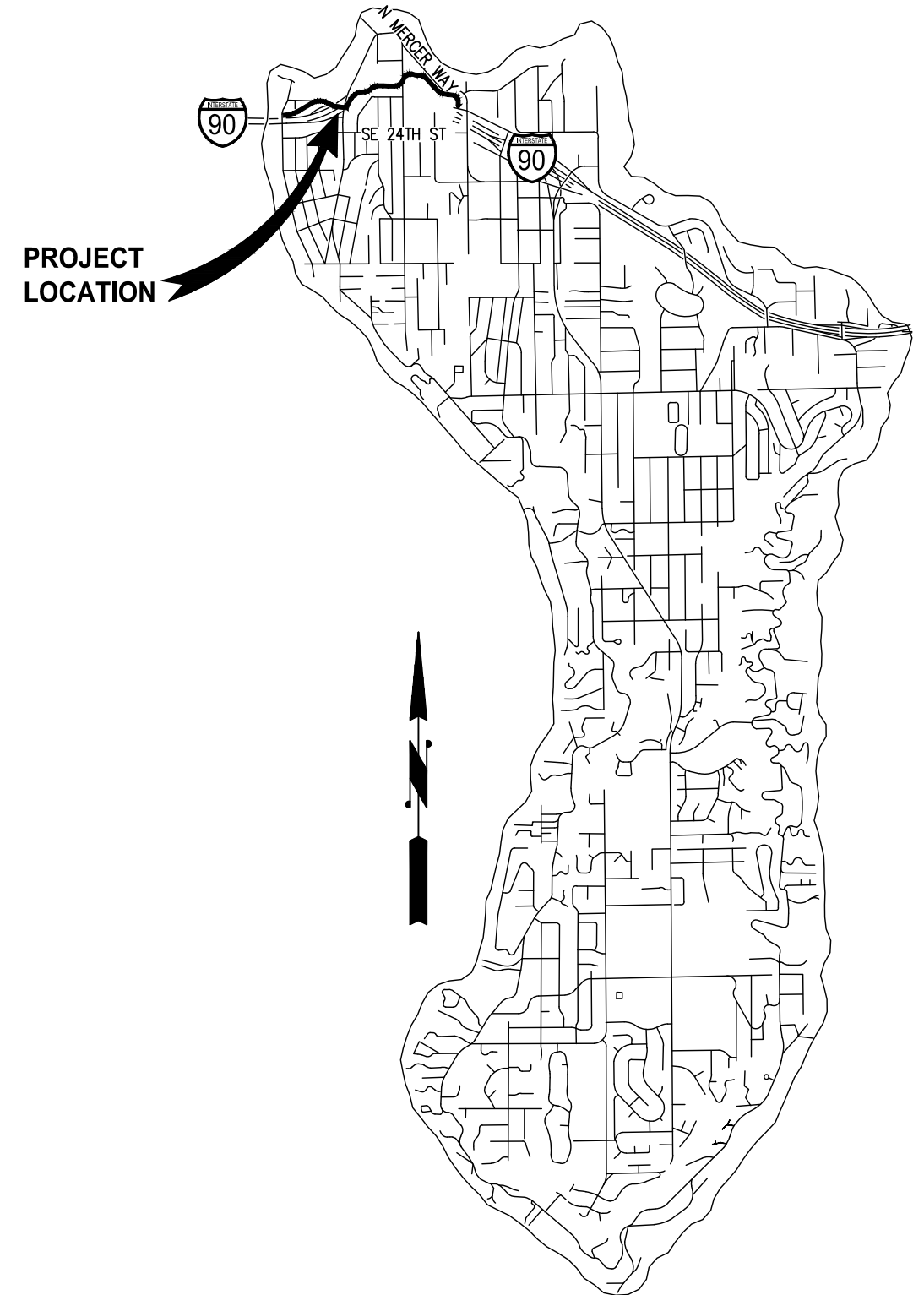
## AUBREY DAVIS PARK TRAIL SAFETY IMPROVEMENTS JANUARY 2023

**CITY PROJECT NUMBER: XXX**

### SCHEDULE OF DRAWINGS

<u>SHEET</u>	<u>DRAWINGS</u>
1	COVER SHEET
2-3	SHEET INDEX, SURVEY CONTROL AND ALIGNMENT DATA
4	LEGEND AND ABBREVIATIONS
5-6	TESC AND SITE PREPARATION PLANS
7	TESC AND SITE PREPARATION DETAILS
8-13	TRAIL IMPROVEMENT PLANS
14	TRAIL IMPROVEMENT DETAILS
* 15-17	SITE ELEMENT PLANS
* 18	SITE ELEMENT DETAILS
* 19-21	LANDSCAPE RESTORATION PLANS
* 22-23	LANDSCAPE SCHEDULE AND DETAILS
* 24-26	IRRIGATION RESTORATION PLANS
* 27	IRRIGATION SCHEDULE AND DETAILS
* 28-31	SIGN SCHEDULE AND DETAILS
* 32-33	TRAIL ILLUMINATION PLAN AND DETAILS

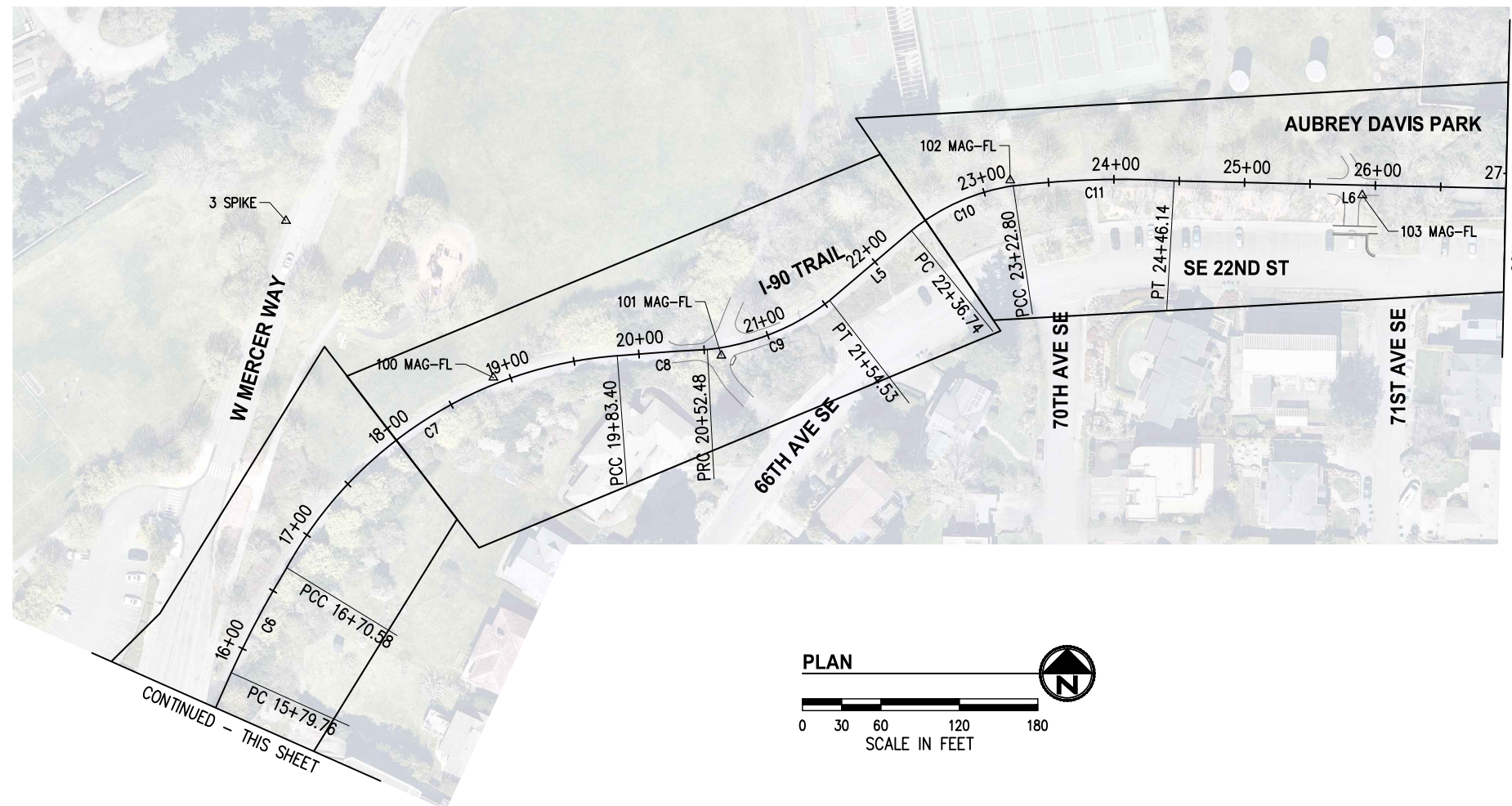
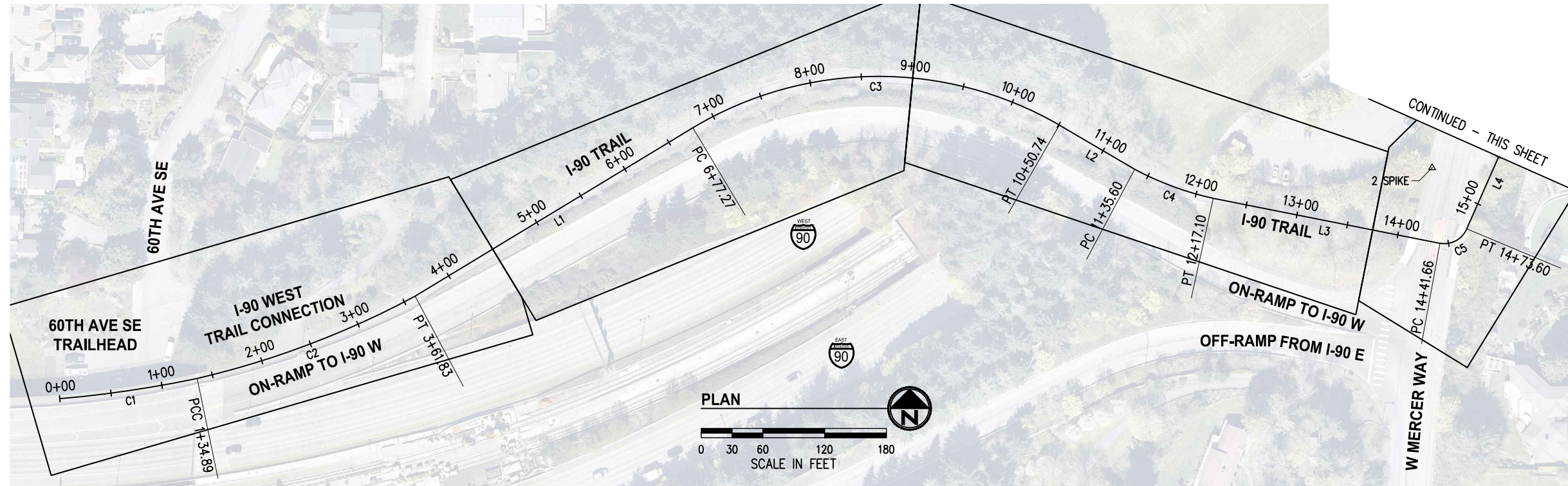
\* THESE SHEETS NOT INCLUDED FOR THIS 30% SUBMITTAL. WILL BE INCLUDED IN 60%.



**CALL 2 DAYS  
BEFORE YOU DIG  
1-800-424-5555**

**30% REVIEW  
SUBMITTAL**

K:\PROJECTS\MERCER IS\21098-Aubrey Davis Park Improvements\DESIGN\Drawings\Contract\21098SURVCTRL.dwg 3/31/2023 10:51 AM



**NOTES**

- THE PURPOSE OF THIS TOPOGRAPHIC SURVEY IS FOR CIVIL ENGINEERING DESIGN. THIS IS NOT A BOUNDARY SURVEY. SOURCES OF BOUNDARY INFORMATION AS SHOWN INCLUDE FIELD-TIED MONUMENTATION, PLATS, COUNTY RECORDS OF SURVEY, AND AUDITOR INDEXING INFORMATION.
- THE LOCATIONS OF EXISTING UNDERGROUND UTILITY SYSTEMS, AS SHOWN HEREON, ARE TAKEN FROM UTILITY LOCATE PAINT MARKS OR AS-BUILT PLANS AND ARE SHOWN IN AN APPROXIMATE WAY ONLY.  
  
THE CONTRACTOR SHALL DETERMINE THE EXACT LOCATION OF ALL EXISTING UTILITIES BEFORE COMMENCING WORK, AND AGREES TO BE FULLY RESPONSIBLE FOR ANY AND ALL DAMAGES WHICH MIGHT BE OCCASIONED BY THE CONTRACTOR'S FAILURE TO EXACTLY LOCATE AND PRESERVE ANY AND ALL UNDERGROUND UTILITIES. ALL LOCATOR SERVICES SHOULD BE CONTACTED PRIOR TO ANY CONSTRUCTION OR SUBSURFACE EXPLORATION. CALL 1-800-424-5555.
- FIELD SURVEY: KPG, NOVEMBER, 2021. LICENSEE MICHAEL R. BOWEN, P.L.S. NO. 29294/RONALD D. REICHEL, P.L.S. NO. 38015.
- CONTOUR INTERVAL = 1 FOOT, ±0.5 FOOT PER NATIONAL MAPPING STANDARDS. CONTOURS DERIVED FROM DIRECT FIELD OBSERVATIONS.
- STORM AND SEWER CONNECTIONS HAVE BEEN DRAWN FROM CENTER OF LID TO CENTER OF LID.
- THE LOCATIONS AND DIMENSIONS OF UNDERGROUND VAULTS HAVE NOT BEEN VERIFIED AND ARE APPROXIMATE.

**HORIZONTAL AND VERTICAL DATUM**

HORIZONTAL DATUM: NAD 83/11  
 VERTICAL DATUM: NAVD 88  
 HORIZONTAL AND VERTICAL DATUMS ESTABLISHED BY RTK GPS OBSERVATION UTILIZING WSRN (WASHINGTON STATE REFERENCE NETWORK) ALSO REFERENCING KPG JOB NUMBER 19033.

I-90 TRAIL			
NUMBER	LENGTH	RADIUS	BRNG/DELTA
C1	134.89	1127.09'	6°51'26"
C2	226.93	866.19'	15°00'39"
C3	373.47	350.67'	61°01'17"
C4	81.50	295.72'	15°47'25"
C5	31.93	23.56'	77°39'24"
C6	90.82	711.38'	7°18'53"
C7	312.82	315.72'	56°46'12"
C8	69.08	1819.45'	2°10'31"
C9	102.05	183.33'	31°53'39"
C10	86.06	161.95'	30°26'44"
C11	123.34	695.38'	10°09'46"
L1	315.442		N 58°46'42" E
L2	84.862		S 59°39'03" E
L3	224.567		S 78°46'35" E
L4	106.165		N 23°55'59" E
L5	82.209		N 49°31'50" E
L6	279.060		S 88°42'08" E

CONTROL POINT LIST				
PT #	DESCRIPTION	NORTHING	EASTING	ELEVATION
2	SPIKE	218611.57	1291363.16	132.74'
3	SPIKE	218994.76	1291481.64	133.62'
100	MAG-FL	218875.02	1291640.28	141.68'
101	MAG-FL	218891.80	1291814.64	154.79'
102	MAG-FL	219025.76	1292035.53	170.72'
103	MAG-FL	219014.32	1292304.75	167.34'
104	MAG-FL	219032.01	1292518.47	151.16'
105	MAG-FL	219215.42	1292658.91	141.86'
106	SPIKE	219249.71	1292560.03	141.51'
107	SPIKE	219295.67	1292715.03	138.94'

NO.	DATE	BY	APPR.	REVISIONS

Approved By		21098SURVCTRL.dwg
ENGINEERING MANAGER	DATE	FILENAME
DESIGNED BY	DATE	
PROJECT MANAGER	DATE	DRAWN BY
DRAWN BY	DATE	
PROJECT ENGINEER	DATE	CHECKED BY
CHECKED BY	DATE	

**KPG**  
 PSOMAS  
 Seattle  
 3131 Elliott Avenue, Suite 400  
 Seattle, WA 98121 206.286.1640  
 Tacoma | Wenatchee | KPG.com

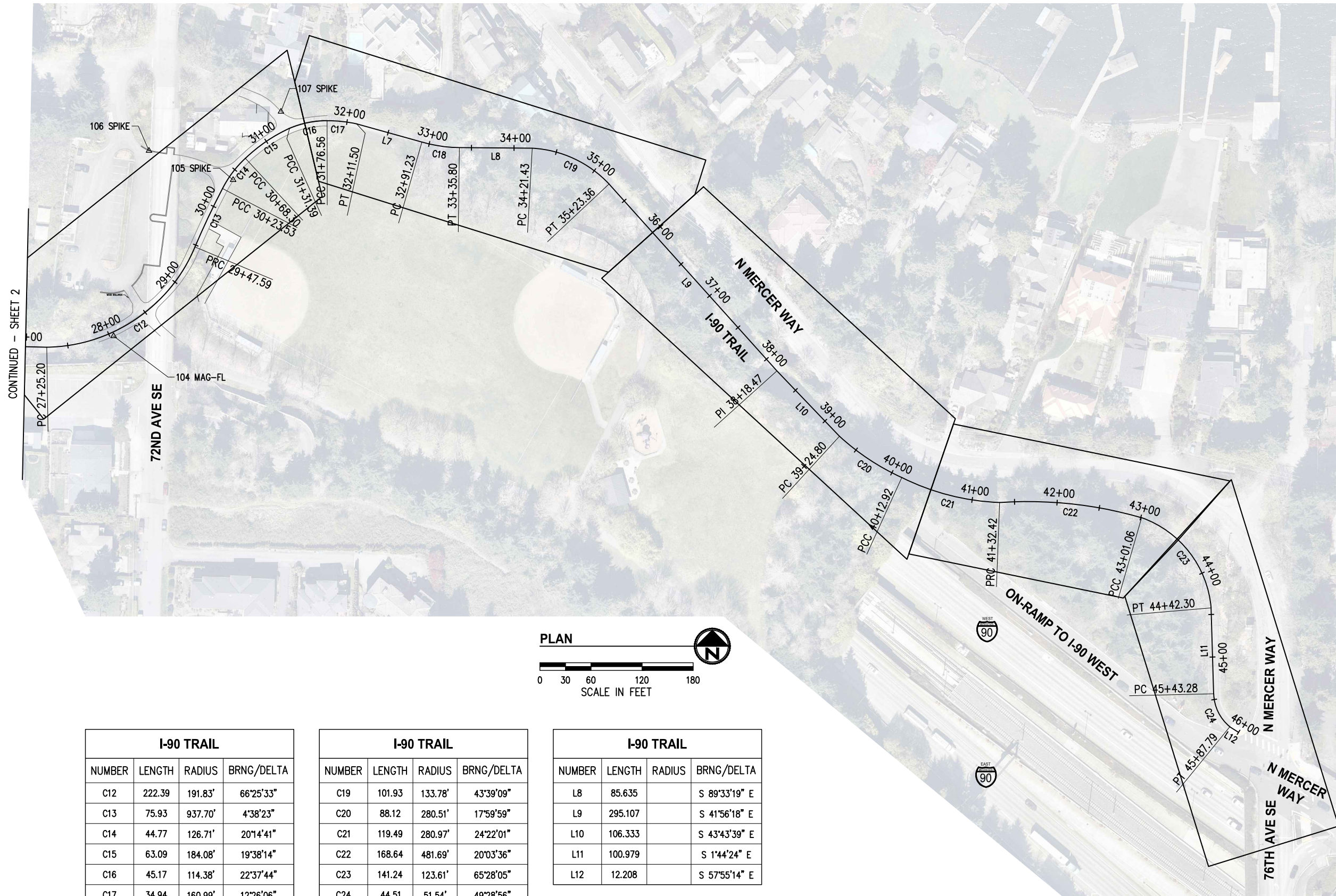
**30% REVIEW  
 SUBMITTAL**



CITY OF MERCER ISLAND  
 AUBREY DAVIS PARK  
 TRAIL SAFETY IMPROVEMENTS

SHEET INDEX, SURVEY CONTROL AND ALIGNMENT DATA - 1	
KPG PROJECT No. 21098	SHT <u>2</u> OF <u>14</u>

K:\PROJECTS\MERCER IS\21098-Aubrey Davis Park Improvements\DESIGN\Drawings\Contract\21098SURVCTRL.dwg 3/31/2023 10:51 AM



**NOTES**

1. THE PURPOSE OF THIS TOPOGRAPHIC SURVEY IS FOR CIVIL ENGINEERING DESIGN. THIS IS NOT A BOUNDARY SURVEY. SOURCES OF BOUNDARY INFORMATION AS SHOWN INCLUDE FIELD-TIED MONUMENTATION, PLATS, COUNTY RECORDS OF SURVEY, AND AUDITOR INDEXING INFORMATION.
2. THE LOCATIONS OF EXISTING UNDERGROUND UTILITY SYSTEMS, AS SHOWN HEREON, ARE TAKEN FROM UTILITY LOCATE PAINT MARKS OR AS-BUILT PLANS AND ARE SHOWN IN AN APPROXIMATE WAY ONLY.  
  
THE CONTRACTOR SHALL DETERMINE THE EXACT LOCATION OF ALL EXISTING UTILITIES BEFORE COMMENCING WORK, AND AGREES TO BE FULLY RESPONSIBLE FOR ANY AND ALL DAMAGES WHICH MIGHT BE OCCASIONED BY THE CONTRACTOR'S FAILURE TO EXACTLY LOCATE AND PRESERVE ANY AND ALL UNDERGROUND UTILITIES. ALL LOCATOR SERVICES SHOULD BE CONTACTED PRIOR TO ANY CONSTRUCTION OR SUBSURFACE EXPLORATION. CALL 1-800-424-5555.
3. FIELD SURVEY: KPG, NOVEMBER, 2021. LICENSEE MICHAEL R. BOWEN, P.L.S. NO. 29294/RONALD D. REICHEL, P.L.S. NO. 38015.
4. CONTOUR INTERVAL = 1 FOOT, ±0.5 FOOT PER NATIONAL MAPPING STANDARDS. CONTOURS DERIVED FROM DIRECT FIELD OBSERVATIONS.
5. STORM AND SEWER CONNECTIONS HAVE BEEN DRAWN FROM CENTER OF LID TO CENTER OF LID.
6. THE LOCATIONS AND DIMENSIONS OF UNDERGROUND VAULTS HAVE NOT BEEN VERIFIED AND ARE APPROXIMATE.

**HORIZONTAL AND VERTICAL DATUM**

HORIZONTAL DATUM: NAD 83/11  
 VERTICAL DATUM: NAVD 88  
 HORIZONTAL AND VERTICAL DATUMS ESTABLISHED BY RTK GPS OBSERVATION UTILIZING WSRN (WASHINGTON STATE REFERENCE NETWORK) ALSO REFERENCING KPG JOB NUMBER 19033.

CONTROL POINT LIST				
PT #	DESCRIPTION	NORTHING	EASTING	ELEVATION
2	SPIKE	218611.57	1291363.16	132.74'
3	SPIKE	218994.76	1291481.64	133.62'
100	MAG-FL	218875.02	1291640.28	141.68'
101	MAG-FL	218891.80	1291814.64	154.79'
102	MAG-FL	219025.76	1292035.53	170.72'
103	MAG-FL	219014.32	1292304.75	167.34'
104	MAG-FL	219032.01	1292518.47	151.16'
105	MAG-FL	219215.42	1292658.91	141.86'
106	SPIKE	219249.71	1292560.03	141.51'
107	SPIKE	219295.67	1292715.03	138.94'

I-90 TRAIL			
NUMBER	LENGTH	RADIUS	BRNG/DELTA
C12	222.39	191.83'	66°25'33"
C13	75.93	937.70'	4°38'23"
C14	44.77	126.71'	20°14'41"
C15	63.09	184.08'	19°38'14"
C16	45.17	114.38'	22°37'44"
C17	34.94	160.99'	12°26'06"
C18	44.57	166.20'	15°21'48"

I-90 TRAIL			
NUMBER	LENGTH	RADIUS	BRNG/DELTA
C19	101.93	133.78'	43°39'09"
C20	88.12	280.51'	17°59'59"
C21	119.49	280.97'	24°22'01"
C22	168.64	481.69'	20°03'36"
C23	141.24	123.61'	65°28'05"
C24	44.51	51.54'	49°28'56"
L7	79.731		S 74°25'05" E

I-90 TRAIL			
NUMBER	LENGTH	RADIUS	BRNG/DELTA
L8	85.635		S 89°33'19" E
L9	295.107		S 41°56'18" E
L10	106.333		S 43°43'39" E
L11	100.979		S 1°44'24" E
L12	12.208		S 57°55'14" E

NO.	DATE	BY	APPR.	REVISIONS

Approved By		21098SURVCTRL.dwg FILENAME	
ENGINEERING MANAGER	DATE	DESIGNED BY	DATE
PROJECT MANAGER	DATE	DRAWN BY	DATE
PROJECT ENGINEER	DATE	CHECKED BY	DATE

**KPG**  
**PSOMAS**  
 Seattle  
 3131 Elliott Avenue, Suite 400  
 Seattle, WA 98121 206.286.1640  
 Tacoma | Wenatchee | KPG.com

**30% REVIEW  
 SUBMITTAL**



CITY OF MERCER ISLAND  
 AUBREY DAVIS PARK  
 TRAIL SAFETY IMPROVEMENTS

SHEET INDEX, SURVEY CONTROL AND ALIGNMENT DATA - 2	
KPG PROJECT No. 21098	SHT <u>3</u> OF <u>14</u>

K:\PROJECTS\MERCER IS\21098--Aubrey Davis Park Improvements\DESIGN\Drawings\Contract\21098LEG-ABBRV.dwg 3/31/2023 10:51 AM

**EXISTING LEGEND**

MIC  MONUMENT IN CASE	① TELEPHONE MANHOLE	— P — PAINTED POWER
MON  SURFACE MONUMENT	T  TELEPHONE RISER	— T — PAINTED TELEPHONE
RC  REBAR & CAP	□ TELEPHONE VAULT LID	— FO — PAINTED FIBER OPTIC
⊙ SPOT SHOT (DESCRIBED)	⊕ TELEPHONE POLE	— TV — PAINTED TV
□ CATCH BASIN	TV  TV VAULT LID	— W — PAINTED WATER
⊙ STORM DRAIN MANHOLE	⊕ FIBER OPTIC MANHOLE	— G — PAINTED GAS
⊕ YARD DRAIN	⊕ GAS VALVE	— SD — STORM
⊕ DOWNSPOUT	⊕ GAS METER	— S — SEWER
SD  STORM DRAIN CLEAN-OUT	⊕ WATER VALVE	— * — FENCE
⊕ SEWER MANHOLE	⊕ WATER METER	~~~~~ HEDGE (HEIGHT NOTED)
SS  SEWER CLEAN-OUT	⊕ WATER MANHOLE	////// BUILDING
⊕ POWER POLE	⊕ FIRE HYDRANT	———— PAINTED STRIPE
⊕ POWER POLE WITH UG CONNECT	⊕ FIRE DEPARTMENT CONNECT	..... RAISED-BUTTON SOLID STRIPE
□ POWER VAULT LID	□ UTILITY VAULT LID (GENERIC/UNKNOWN)	..... RAISED-BUTTON SKIP STRIPE
△ POWER TRANSFORMER	U  UTILITY ACCESS (GENERIC/UNKNOWN)	———— EDGE OF PAVEMENT
⊕ POWER METER	● BORE SITE (WITH FIELD DESCRIPTION)	----- FLOWLINE
⊕ POWER OUTLET	○ BOULDER	----- CONTOUR
→ GUY ANCHOR	⊕ SIGN	----- EXISTING RIGHT-OF-WAY LINE
⊕ TRAFFIC SIGNAL WITH LUMINAIRE	⊕ MAILBOX	----- PROPERTY LINE
⊕ PEDESTRIAN SIGNAL	○ SHRUB	□ CONCRETE
⊕ JUNCTION BOX TYPE 1, 2, 3	▽ GRASS	□ GRAVEL
⊕ TRAFFIC CONTROL CABINET	DT12(3)  DECIDUOUS TREE, DIAM. IN INCHES (# OF TRUNKS)	□ BRICK
⊕ TRAFFIC SERVICE CABINET	CT12(3)  CONIFEROUS TREE, DIAM. IN INCHES (# OF TRUNKS)	□ METAL GRATE
○ TRAFFIC ATTENUATOR LOOP		
⊕ STREET LIGHT (LUMINAIRE)		
⊕ LOT LIGHT		
⊕ YARD LIGHT		

**PROPOSED LEGEND**

⊕ WATER METER
⊕ WATER VALVE
⊕ FIRE HYDRANT
⊕ SIGN
— X — CHAIN LINK FENCE
DETECTABLE WARNING SURFACE
HMA CL 1/2" PG 64-22 FOR NEW PAVEMENT
REMOVE ASPHALT CONC PAVEMENT (ON SITE PREPARATION PLANS)
CEMENT CONCRETE
PERVIOUS CEMENT CONCRETE
RESERVOIR COURSE
CSTC
CSBC
⊕ TREE GRATE
⊕ DECORATIVE PEDESTRIAN LUMINAIRES AND POLE
⊕ SIGNAL POLE WITH DECORATIVE LUMINAIRE AND MAST ARM
⊕ SIGNAL CONTROLLER CABINET
⊕ ELECTRICAL SERVICE CABINET
⊕ BATTERY BACKUP POWER SUPPLY
⊕ JUNCTION BOX TYPE 1, 2, 8
— CONDUIT

**ABBREVIATIONS**

AC ASPHALT CONCRETE	MIC MONUMENT IN CASE
ACP ASPHALT CONCRETE PAVEMENT	MJ MECHANICAL JOINT
ADA AMERICANS WITH DISABILITIES ACT	MON MONUMENT
AP ANGLE POINT	N NORTH OR NORTHING
APPROX APPROXIMATE	NAVD NORTH AMERICAN VERTICAL DATUM
BLDG BUILDING	NO NUMBER
CB CATCH BASIN	NTS NOT TO SCALE
CCP CEMENT CONCRETE PAVEMENT	OC ON CENTER
CDF CONTROLLED DENSITY FILL	OD OUTSIDE DIAMETER
CHLK CHAINLINK	PC POINT OF CURVE
℄ CENTERLINE	PCC POINT OF COMPOUND CURVATURE
CL CLASS	PCCP PERVIOUS CEMENT CONCRETE PAVEMENT
CO CLEANOUT	PI POINT OF INTERSECTION
COMI CITY OF MERCER ISLAND	POB POINT OF BEGINNING
COL COLUMN CONC CONCRETE	POE POINT OF ENDING
CSBC CRUSHED SURFACING BASE COURSE	PRC POINT OF REVERSE CURVATURE
CSTC CRUSHED SURFACING TOP COURSE	PT POINT OF TANGENT
DI DUCTILE IRON	PVC POLYVINYL CHLORIDE OR
DIA DIAMETER	POINT OF VERTICAL CURVATURE
DW DRIVEWAY	PVT POINT OF VERTICAL TANGENT
E EAST OR EASTING	PVI POINT OF VERTICAL INTERSECTION
EA EACH	R RADIUS
ELEV ELEVATION	ROW RIGHT OF WAY
EOP EDGE OF PAVEMENT	RT RIGHT
EW EACH WAY	S SLOPE OR SOUTH
EXIST EXISTING	SD STORM DRAIN
FF FINISHED FLOOR	SDMH STORM DRAIN MANHOLE
FL FLOW LINE	SE SOUTHEAST
FO FIBER OPTIC	SHT SHEET
FOC FACE OF CURB	SQ SQUARE
HMA HOT MIX ASPHALT	SS SANITARY SEWER
HORIZ HORIZONTAL	SSMH SANITARY SEWER MANHOLE
HP HIGH POINT	ST STREET
ID INSIDE DIAMETER	STA STATION
IE INVERT ELEVATION	STD STANDARD
IN INCH/INCHES	STCR STRUCTURE
JB JUNCTION BOX	SW SOUTHWEST
L LENGTH LT LEFT	TYP TYPICAL
LF LINEAR FEET	VERT VERTICAL
LP LOW POINT	W WEST
MAX MAXIMUM	YD YARD DRAIN
MIN MINIMUM	
MH MANHOLE	

NO.	DATE	BY	APPR.	REVISIONS

<b>Approved By</b>		21098LEG-ABBRV.dwg FILENAME	
ENGINEERING MANAGER	DATE	DESIGNED BY	DATE
PROJECT MANAGER	DATE	DRAWN BY	DATE
PROJECT ENGINEER	DATE	CHECKED BY	DATE

**KPG**  
PSOMAS  
Seattle  
3131 Elliott Avenue, Suite 400  
Seattle, WA 98121 206.286.1640  
Tacoma | Wenatchee | KPG.com

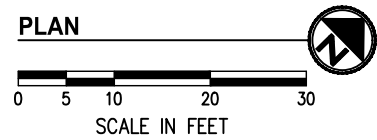
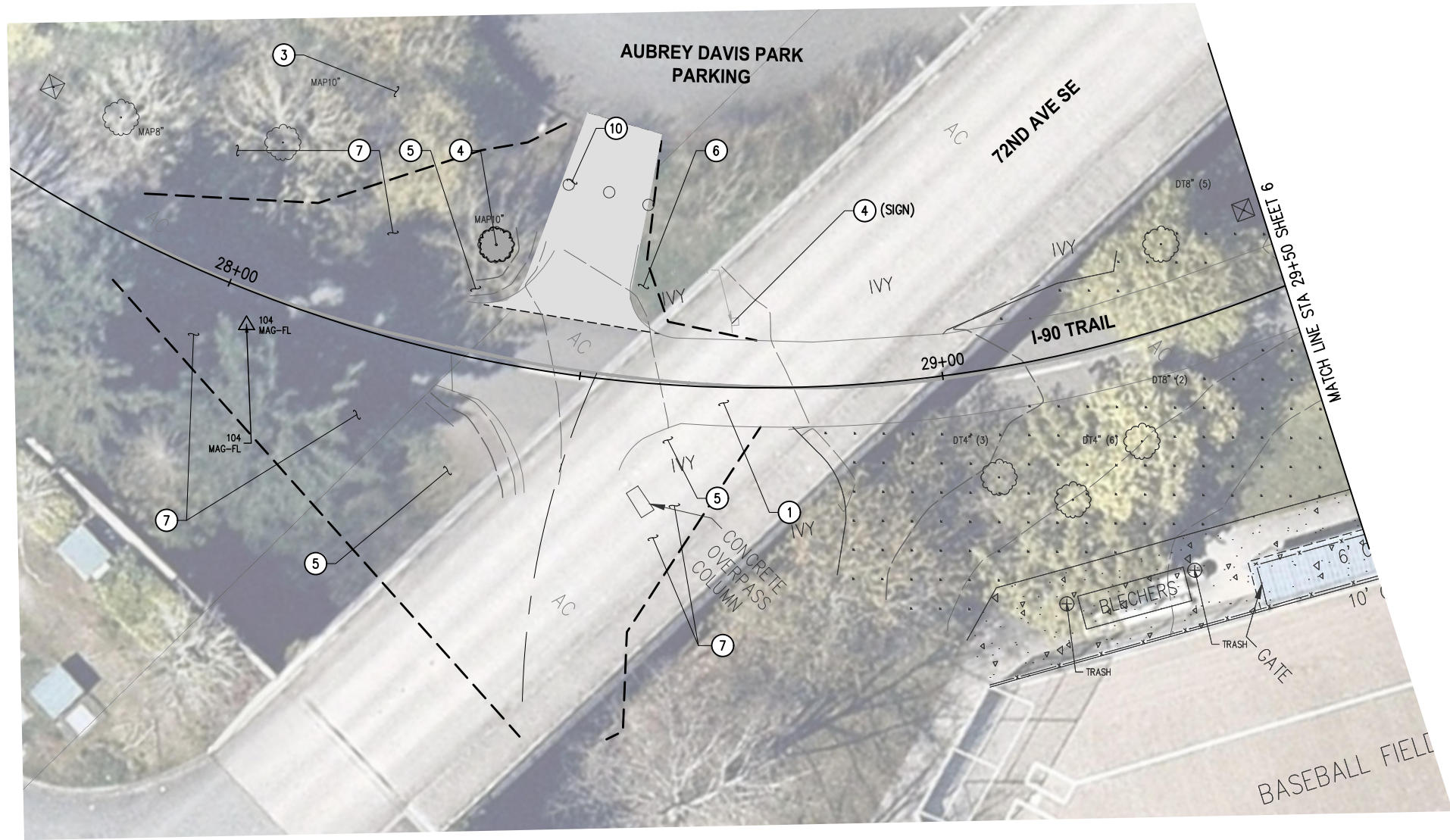
**30% REVIEW  
SUBMITTAL**



**CITY OF MERCER ISLAND  
AUBREY DAVIS PARK  
TRAIL SAFETY IMPROVEMENTS**

LEGEND AND ABBREVIATIONS	
KPG PROJECT No. 21098	SHT <u>4</u> OF <u>14</u>

K:\PROJECTS\MERCER IS\21098-Aubrey Davis Park Improvements\DESIGN\Drawings\Contract\21098TESC-SP.dwg 3/31/2023 10:52 AM



**GENERAL NOTES**

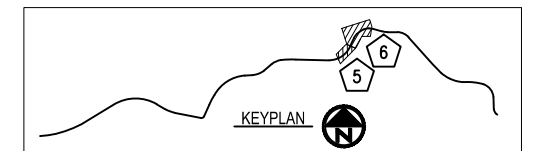
- CONTRACTOR SHALL SEQUENCE REMOVAL OF EXISTING FEATURES WITH CONSTRUCTION OF TRAIL IMPROVEMENTS TO MINIMIZE IMPACTS TO TRAIL USERS.
- CONTRACTOR SHALL PROTECT ALL ABOVE AND BELOW GROUND UTILITIES AND IMPROVEMENTS THAT ARE TO REMAIN.
- CONTRACTOR SHALL PROTECT ALL PLANT MATERIAL OUTSIDE OF CLEARING LIMITS.
- CONTRACTOR SHALL MAINTAIN ACCESS FOR ALL ADJACENT PROPERTY OWNERS AND PARK USERS.
- CONTRACTOR SHALL FURNISH AND INSTALL INLET PROTECTION IN ALL EXISTING AND NEW CATCH BASINS. CONTRACTOR SHALL INSTALL OTHER EROSION CONTROL MEASURES TO MINIMIZE SEDIMENT MIGRATION INTO STREAMS AND STORM DRAINAGE SYSTEMS.

**CONSTRUCTION NOTES**

- SAWCUT AND REMOVE ASPHALT PAVEMENT.
- PRESERVE AND PROTECT.
- REMOVE.
- REMOVE GROUNDCOVER/GRASS WITHIN CLEARING LIMITS AS NECESSARY TO INSTALL PROPOSED IMPROVEMENTS.
- REMOVE VEGETATION, THIS AREA.  
 TRIM/PRUNE EXISTING TREE(S), BUSH(ES), AND SHRUB(S) PER COMI STD DETAIL UF-4 AS NECESSARY TO INSTALL PROPOSED IMPROVEMENTS.
- IMPROVEMENTS. CONTRACTOR SHALL VERIFY VEGETATION MANAGEMENT (TRIMMING/PRUNING) AREA WITH COMI PARKS DEPARTMENT PRIOR TO START OF WORK.
- REMOVE BOLLARDS.

**LEGEND**

- REMOVE CEMENT CONC PAVEMENT
- REMOVE ASPHALT PAVEMENT
- REMOVE CURB AND GUTTER
- REMOVE DECIDUOUS TREE
- SAWCUT
- HIGH VISIBILITY FENCE
- CLEARING LIMITS



NO.	DATE	BY	APPR.	REVISIONS

Approved By		21098TESC-SP.dwg FILENAME	
ENGINEERING MANAGER	DATE	DESIGNED BY	DATE
PROJECT MANAGER	DATE	DRAWN BY	DATE
PROJECT ENGINEER	DATE	CHECKED BY	DATE

**KPG**  
**PSOMAS**  
 Seattle  
 3131 Elliott Avenue, Suite 400  
 Seattle, WA 98121 206.286.1640  
 Tacoma | Wenatchee | KPG.com

**30% REVIEW  
 SUBMITTAL**



**CITY OF MERCER ISLAND  
 AUBREY DAVIS PARK  
 TRAIL SAFETY IMPROVEMENTS**

**TESC AND SITE PREPARATION PLANS  
 STA 28+00 TO STA 29+50**

K:\PROJECTS\MERCER IS\21098-Aubrey Davis Park Improvements\DESIGN\Drawings\Contract\21098TESC-SP.dwg 3/31/2023 10:52 AM



**GENERAL NOTES**

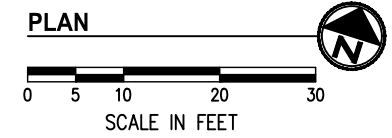
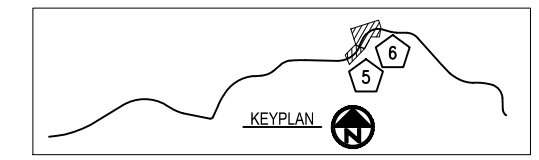
1. CONTRACTOR SHALL SEQUENCE REMOVAL OF EXISTING FEATURES WITH CONSTRUCTION OF TRAIL IMPROVEMENTS TO MINIMIZE IMPACTS TO TRAIL USERS.
2. CONTRACTOR SHALL PROTECT ALL ABOVE AND BELOW GROUND UTILITIES AND IMPROVEMENTS THAT ARE TO REMAIN.
3. CONTRACTOR SHALL PROTECT ALL PLANT MATERIAL OUTSIDE OF CLEARING LIMITS.
4. CONTRACTOR SHALL MAINTAIN ACCESS FOR ALL ADJACENT PROPERTY OWNERS AND PARK USERS.
5. CONTRACTOR SHALL FURNISH AND INSTALL INLET PROTECTION IN ALL EXISTING AND NEW CATCH BASINS. CONTRACTOR SHALL INSTALL OTHER EROSION CONTROL MEASURES TO MINIMIZE SEDIMENT MIGRATION INTO STREAMS AND STORM DRAINAGE SYSTEMS.

**CONSTRUCTION NOTES**

- ① SAWCUT AND REMOVE ASPHALT PAVEMENT.
- ② SAWCUT AND REMOVE CONCRETE PAVEMENT.
- ③ PRESERVE AND PROTECT.
- ④ REMOVE.
- ⑤ REMOVE GROUNDCOVER/GRASS WITHIN CLEARING LIMITS AS NECESSARY TO INSTALL PROPOSED IMPROVEMENTS.
- ⑥ REMOVE VEGETATION, THIS AREA.  
TRIM/PRUNE EXISTING TREE(S), BUSH(ES), AND SHRUB(S) PER COMI STD DETAIL UF-4 AS NECESSARY TO INSTALL PROPOSED IMPROVEMENTS. CONTRACTOR SHALL VERIFY VEGETATION MANAGEMENT (TRIMMING/PRUNING) AREA WITH COMI PARKS DEPARTMENT PRIOR TO START OF WORK.
- ⑦ REMOVE DRINKING FOUNTAIN. CUT AND CAP SUPPLY LINE. MARK ON SURFACE FOR FUTURE CONNECTION OF NEW DRINKING FOUNTAIN.
- ⑧ REMOVE BENCH. CONTRACTOR SHALL STORE BENCH FOR REINSTALLATION.
- ⑩ REMOVE BOLLARDS.
- ⑪ PRESERVE AND PROTECT PEACE POLE.
- ⑫ REMOVE BIKE RACK. CONTRACTOR SHALL STORE FOR REINSTALLATION.
- ⑬ REMOVE DOG WASTE DISPENSER. CONTRACTOR SHALL STORE FOR REINSTALLATION.
- ⑭ REMOVE TRASH AND RECYCLE CONTAINERS. CONTRACTOR SHALL STORE FOR REINSTALLATION.

**LEGEND**

- REMOVE CEMENT CONC PAVEMENT
- REMOVE ASPHALT PAVEMENT
- REMOVE CURB AND GUTTER
- REMOVE DECIDUOUS TREE
- SAWCUT
- HIGH VISIBILITY FENCE
- CLEARING LIMITS



NO.	DATE	BY	APPR.	REVISIONS

Approved By		21098TESC-SP.dwg FILENAME	
ENGINEERING MANAGER	DATE	DESIGNED BY	DATE
PROJECT MANAGER	DATE	DRAWN BY	DATE
PROJECT ENGINEER	DATE	CHECKED BY	DATE

**KPG**  
**PSOMAS**  
Seattle  
3131 Elliott Avenue, Suite 400  
Seattle, WA 98121 206.286.1640  
Tacoma | Wenatchee | KPG.com

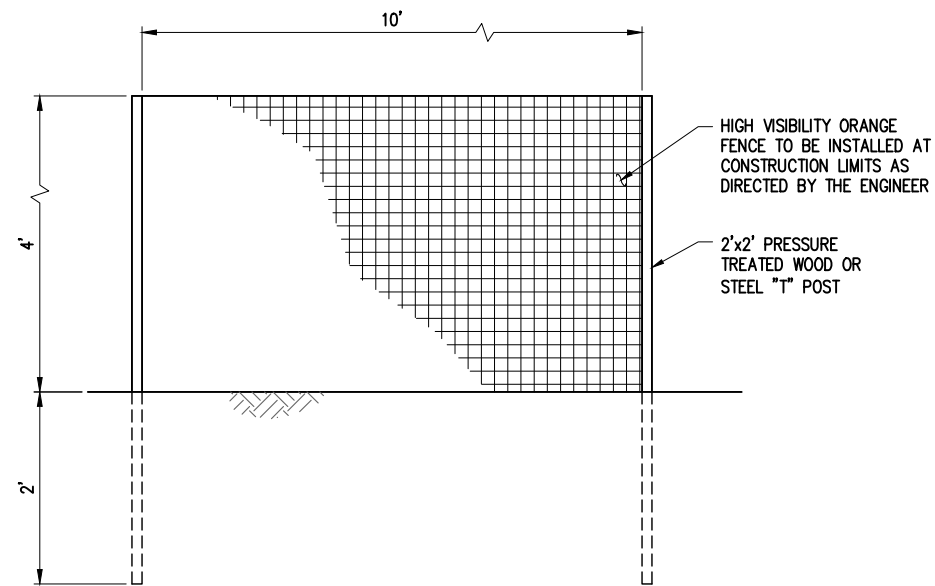
**30% REVIEW  
SUBMITTAL**



**CITY OF MERCER ISLAND  
AUBREY DAVIS PARK  
TRAIL SAFETY IMPROVEMENTS**

TESC AND SITE PREPARATION PLANS  
STA 29+50 TO STA 32+00  
KPG PROJECT No. 21098 SHT 6 OF 14

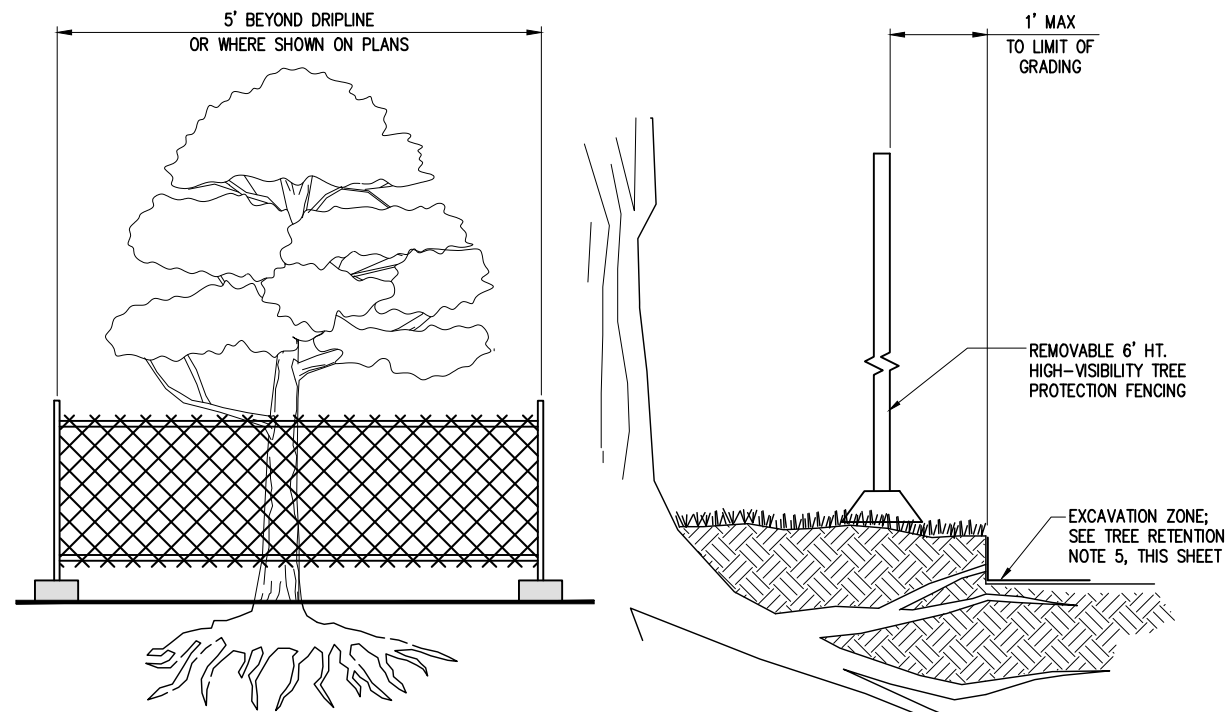
K:\PROJECTS\MERCER IS\21098-Aubrey Davis Park Improvements\DESIGN\Drawings\Contract\21098TESC-SP-DET.dwg 3/31/2023 10:52 AM



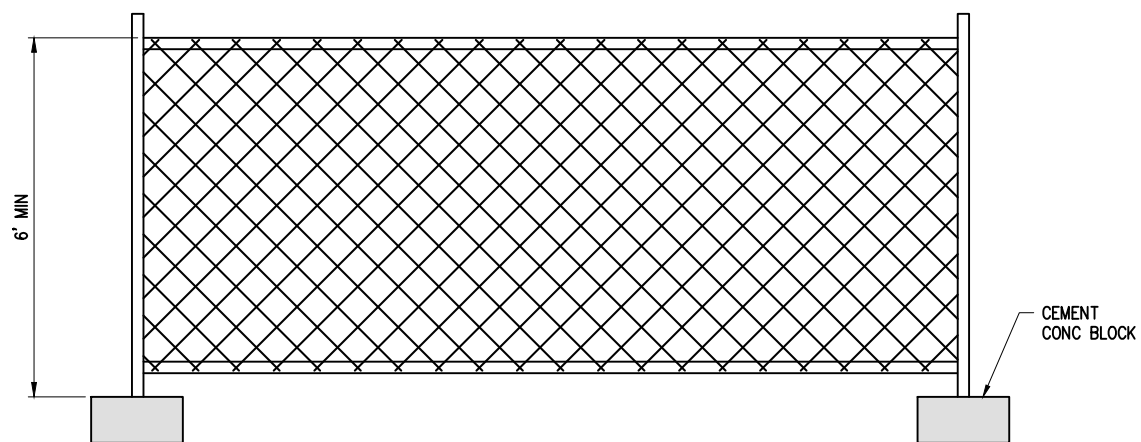
**ELEVATION**

**NOTE:**  
PLACE AT GRADING LIMITS AND AROUND TREES TO BE PROTECTED WHERE DIRECTED BY THE ENGINEER.

**HIGH VISIBILITY ORANGE FENCING**  
NTS



**TREE PROTECTION DETAIL**  
NTS



**NOTES:**

- SIX FOOT HIGH TEMPORARY CHAIN LINK FENCE SHALL BE PLACED WHERE INDICATED ON PLANS. ACCESS GATES TO BE INSTALLED ONLY WHERE INDICATED ON PLANS. INSTALL FENCE POSTS USING CEMENT CONC. BLOCK FOOTINGS ONLY. AVOID DRIVING POSTS OR STAKES INTO EXISTING GROUND SURFACE.

**TEMPORARY CHAIN LINK FENCE**  
NTS

NO.	DATE	BY	APPR.	REVISIONS

**Approved By**

ENGINEERING MANAGER	DATE	DESIGNED BY	DATE
PROJECT MANAGER	DATE	DRAWN BY	DATE
PROJECT ENGINEER	DATE	CHECKED BY	DATE

21098TESC-SP-DET.dwg  
FILENAME



Seattle  
3131 Elliott Avenue, Suite 400  
Seattle, WA 98121 206.286.1640  
Tacoma | Wenatchee | KPG.com

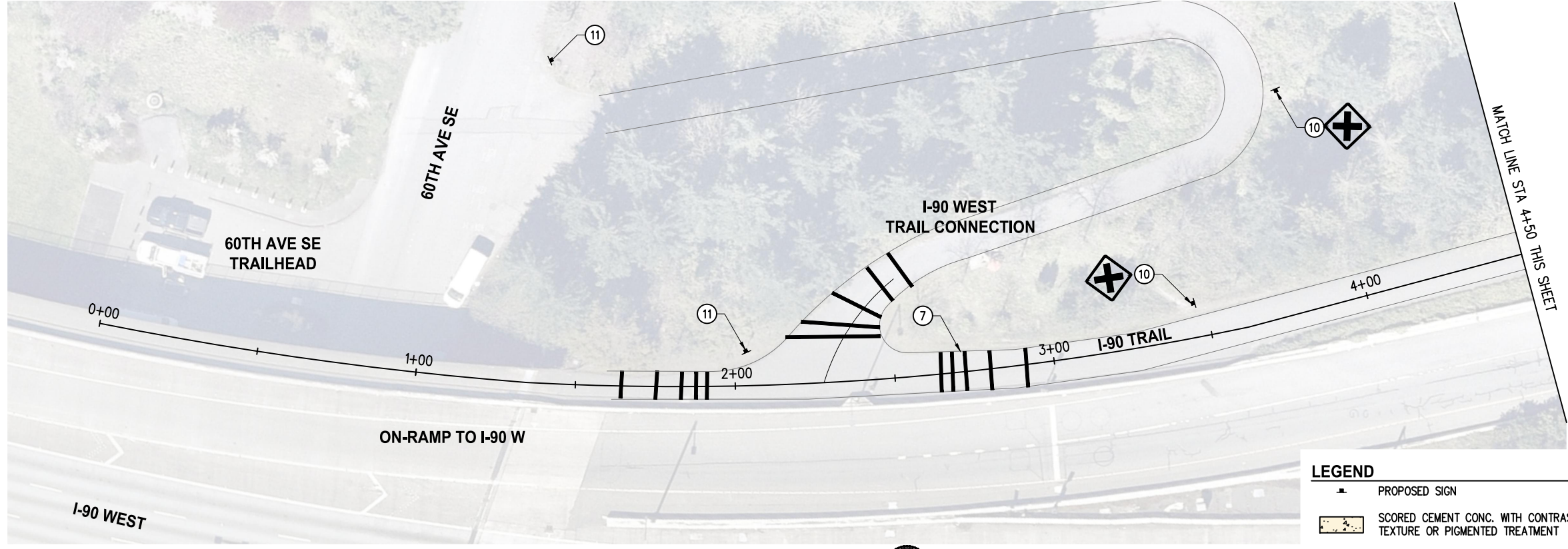
**30% REVIEW  
SUBMITTAL**



**CITY OF MERCER ISLAND  
AUBREY DAVIS PARK  
TRAIL SAFETY IMPROVEMENTS**

TESC AND SITE PREPARATION DETAILS

KPG PROJECT No. 21098 SHT 7 OF 14

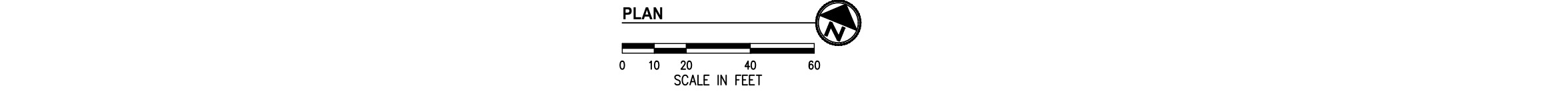
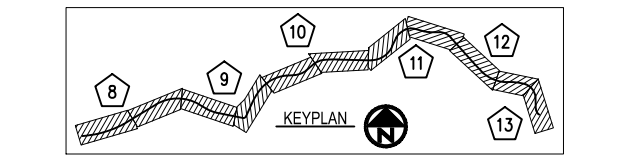
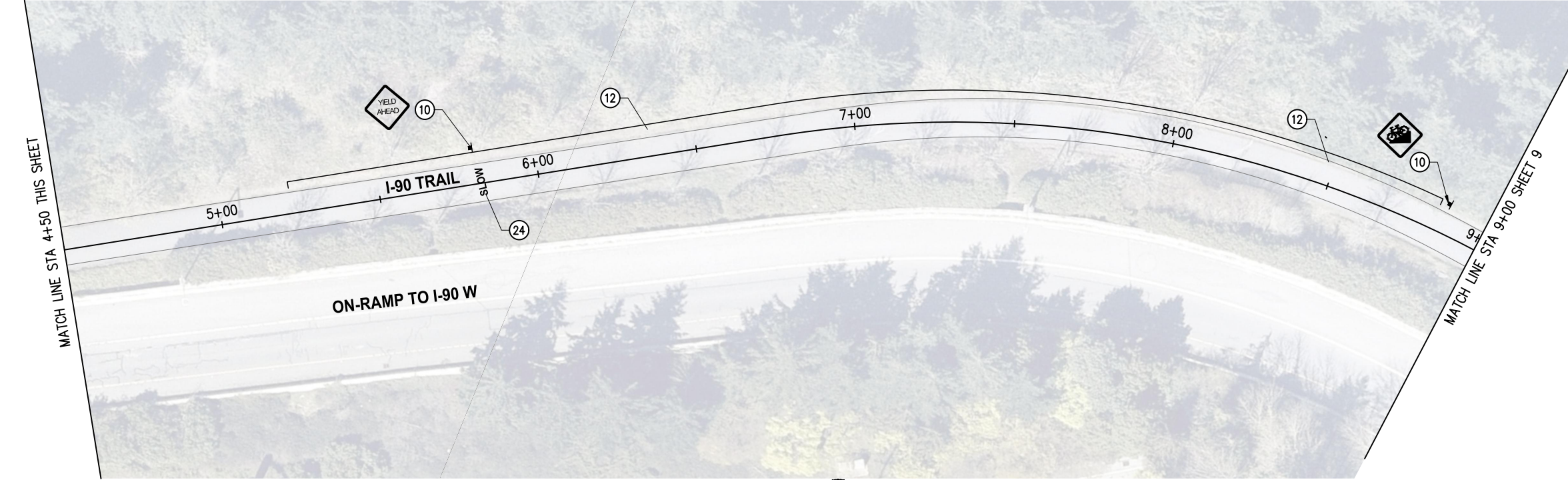
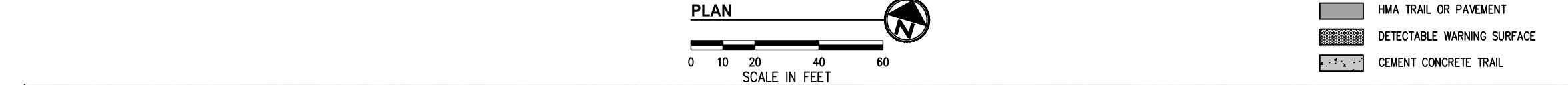


**GENERAL NOTES**

- CONTRACTOR SHALL SEQUENCE REMOVAL OF EXISTING FEATURES WITH CONSTRUCTION OF TRAIL IMPROVEMENTS TO MINIMIZE IMPACTS TO TRAIL USERS.
- CONTRACTOR SHALL PROVIDE AND MAINTAIN TEMPORARY PEDESTRIAN ROUTE AROUND CONSTRUCTION ACTIVITY FOR THE DURATION OF CONSTRUCTION.

**CONSTRUCTION NOTES**

- INSTALL PAINTED BAR PER DETAIL, SHEET 14.
- INSTALL WARNING SIGN.
- INSTALL WAYFINDING SIGN.
- RESTORE TRAIL SHOULDER, SHEET 14.
- INSTALL PAINTED PAVEMENT MARKING.

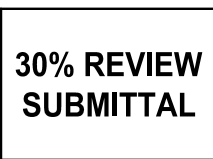


K:\PROJECTS\MERCER IS\21098-Aubrey Davis Park Improvements\DESIGN\Drawings\Contract\21098TRAIL.dwg 3/31/2023 10:52 AM

NO.	DATE	BY	APPR.	REVISIONS

<b>Approved By</b>		21098TRAIL.dwg
ENGINEERING MANAGER	DATE	FILENAME
DESIGNED BY	DATE	
PROJECT MANAGER	DATE	DRAWN BY
DRAWN BY	DATE	
PROJECT ENGINEER	DATE	CHECKED BY
CHECKED BY	DATE	

30% REVIEW  
SUBMITTAL

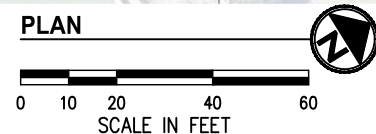
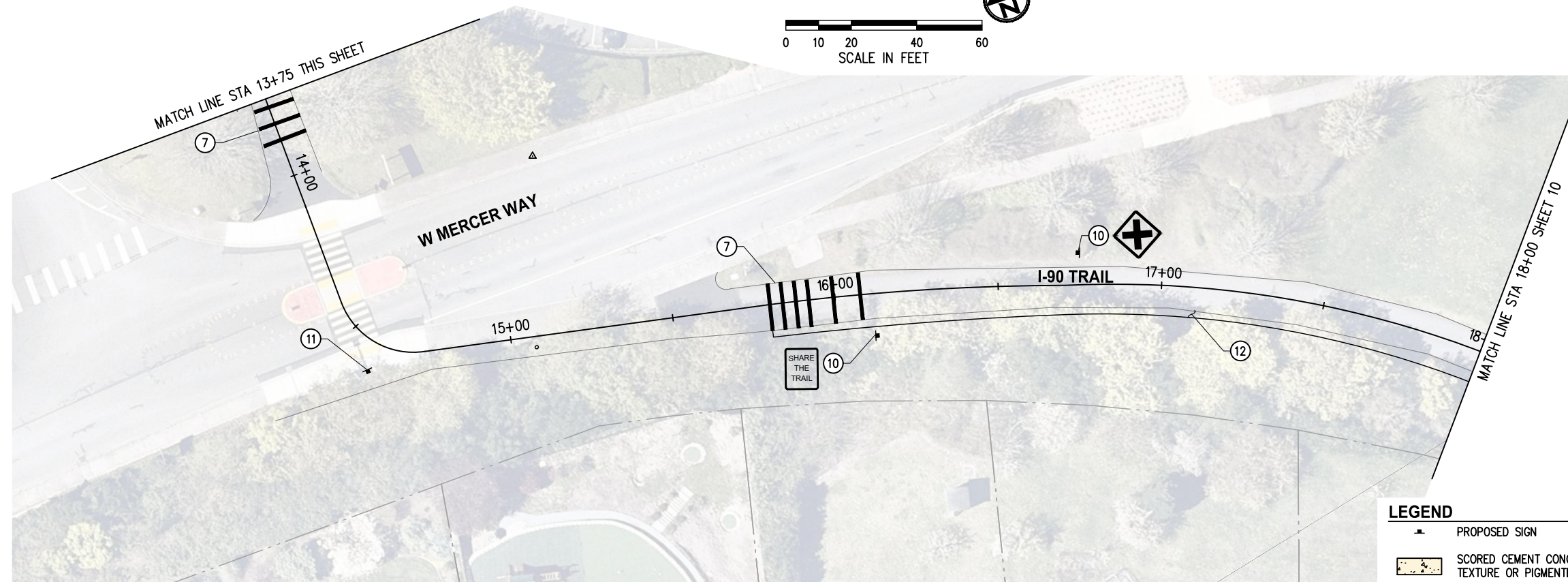
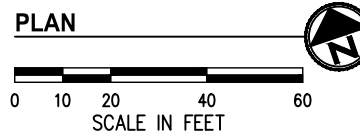
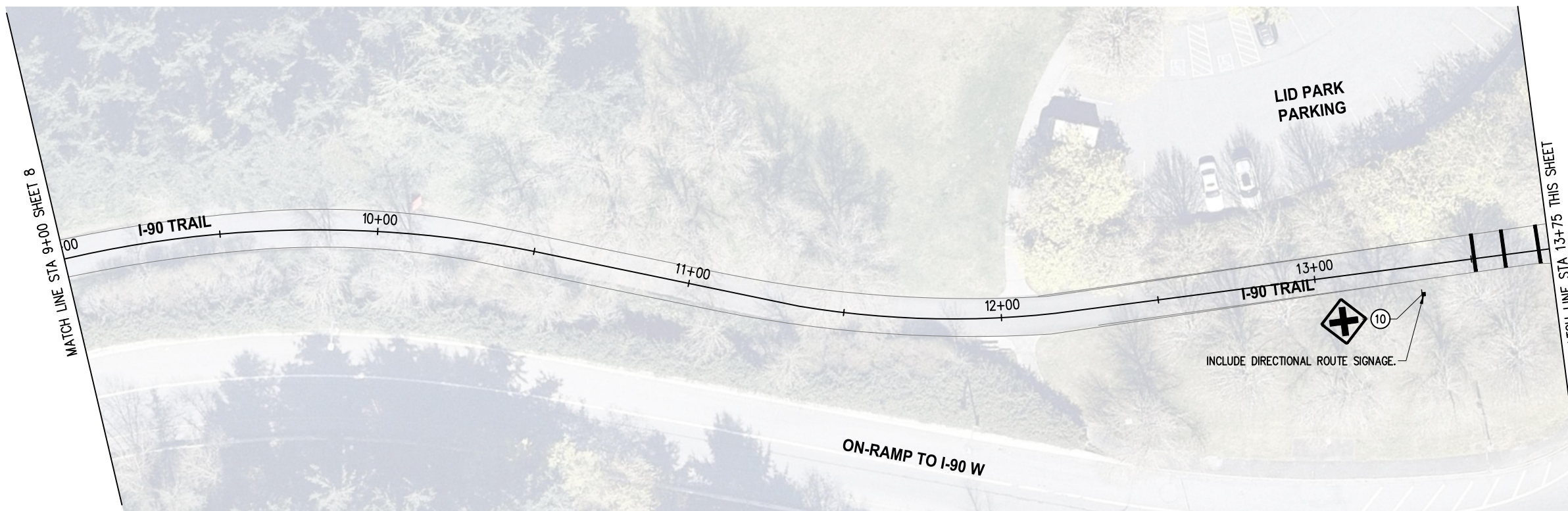


CITY OF MERCER ISLAND  
AUBREY DAVIS PARK  
TRAIL SAFETY IMPROVEMENTS

TRAIL IMPROVEMENT PLANS  
STA 0+00 TO STA 9+00



K:\PROJECTS\MERCER IS\21098-Aubrey Davis Park Improvements\DESIGN\Drawings\Contract\21098TRAIL.dwg 3/31/2023 10:52 AM



**GENERAL NOTES**

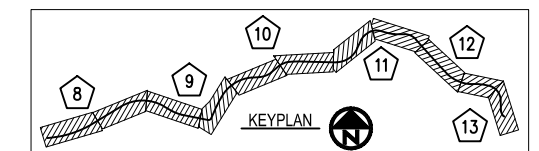
1. CONTRACTOR SHALL SEQUENCE REMOVAL OF EXISTING FEATURES WITH CONSTRUCTION OF TRAIL IMPROVEMENTS TO MINIMIZE IMPACTS TO TRAIL USERS.
2. CONTRACTOR SHALL PROVIDE AND MAINTAIN TEMPORARY PEDESTRIAN ROUTE AROUND CONSTRUCTION ACTIVITY FOR THE DURATION OF CONSTRUCTION.

**CONSTRUCTION NOTES**

- ⑦ INSTALL PAINTED BAR PER DETAIL, SHEET 14.
- ⑩ INSTALL WARNING SIGN.
- ⑪ INSTALL WAYFINDING SIGN.
- ⑫ RESTORE TRAIL SHOULDER, SHEET 14.

**LEGEND**

- PROPOSED SIGN
- SCORED CEMENT CONC. WITH CONTRASTING TEXTURE OR PIGMENTED TREATMENT
- HMA TRAIL OR PAVEMENT
- DETECTABLE WARNING SURFACE
- CEMENT CONCRETE TRAIL



NO.	DATE	BY	APPR.	REVISIONS

<b>Approved By</b>		21098TRAIL.dwg
ENGINEERING MANAGER	DATE	DESIGNED BY
PROJECT MANAGER	DATE	DRAWN BY
PROJECT ENGINEER	DATE	CHECKED BY

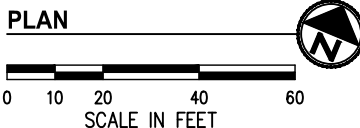
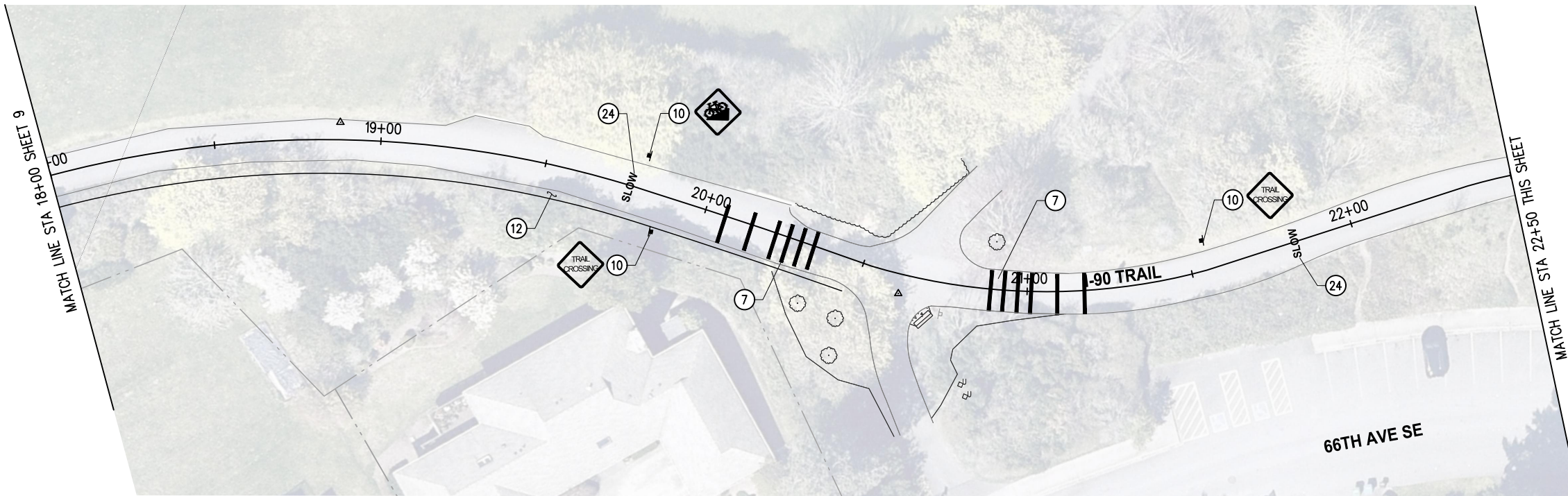
**KPG**  
PSOMAS  
Seattle  
3131 Elliott Avenue, Suite 400  
Seattle, WA 98121 206.286.1640  
Tacoma | Wenatchee | KPG.com

**30% REVIEW  
SUBMITTAL**



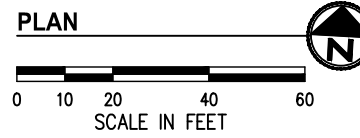
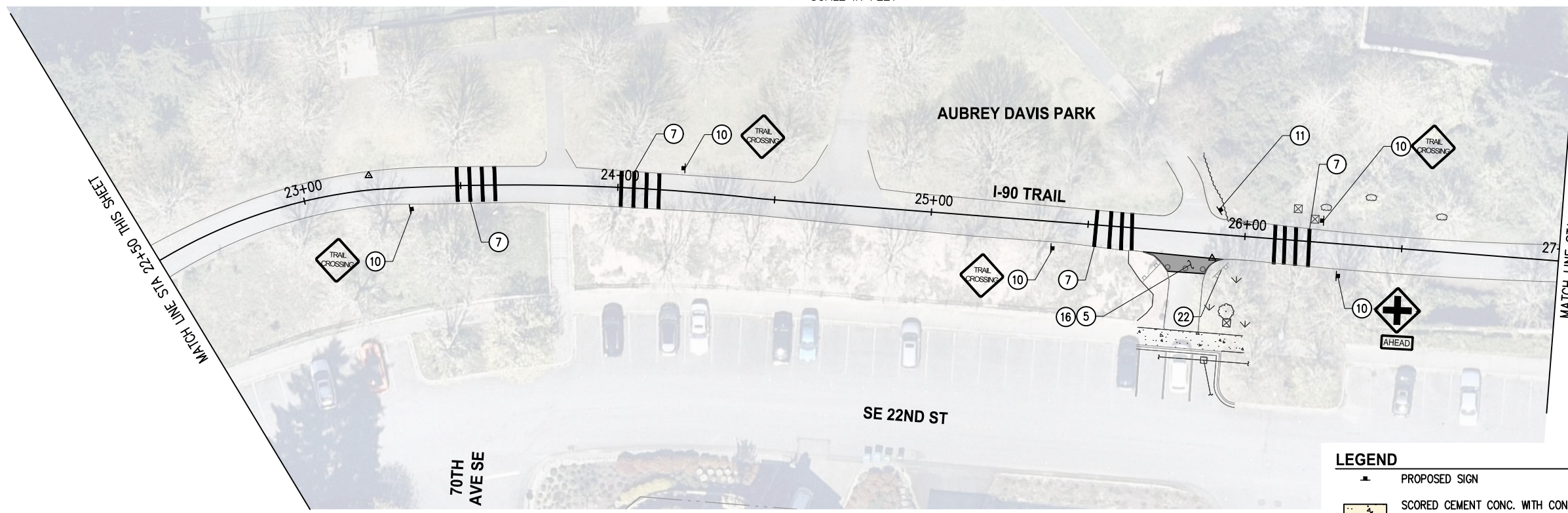
**CITY OF MERCER ISLAND  
AUBREY DAVIS PARK  
TRAIL SAFETY IMPROVEMENTS**

**TRAIL IMPROVEMENT PLANS  
STA 9+00 TO STA 18+00**  
KPG PROJECT No. 21098 SHT 9 OF 14

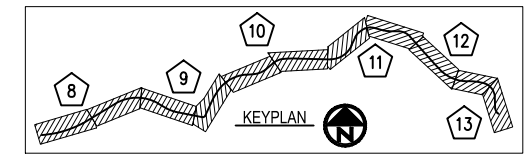


- GENERAL NOTES**
- CONTRACTOR SHALL SEQUENCE REMOVAL OF EXISTING FEATURES WITH CONSTRUCTION OF TRAIL IMPROVEMENTS TO MINIMIZE IMPACTS TO TRAIL USERS.
  - CONTRACTOR SHALL PROVIDE AND MAINTAIN TEMPORARY PEDESTRIAN ROUTE AROUND CONSTRUCTION ACTIVITY FOR THE DURATION OF CONSTRUCTION.

- CONSTRUCTION NOTES**
- INSTALL HMA CL 1/2" PG58H-22 FOR WALKWAY. SEE TYPICAL SECTIONS, SHEET 14.
  - INSTALL PAINTED BAR PER DETAIL, SHEET 14.
  - INSTALL WARNING SIGN.
  - INSTALL WAYFINDING SIGN.
  - RESTORE TRAIL SHOULDER, SHEET 14.
  - REMOVE BOLLARDS WITHIN PAVEMENT LIMITS.
  - REMOVE AND SALVAGE PARK SIGN TO CITY.
  - INSTALL PAINTED PAVEMENT MARKING.



- LEGEND**
- PROPOSED SIGN
  - SCORED CEMENT CONC. WITH CONTRASTING TEXTURE OR PIGMENTED TREATMENT
  - HMA TRAIL OR PAVEMENT
  - DETECTABLE WARNING SURFACE
  - CEMENT CONCRETE TRAIL



K:\PROJECTS\MERCER IS\21098-Aubrey Davis Park Improvements\DESIGN\Drawings\Contract\21098TRAIL.dwg 3/31/2023 10:52 AM

NO.	DATE	BY	APPR.	REVISIONS

<b>Approved By</b>		21098TRAIL.dwg
ENGINEERING MANAGER	DATE	DESIGNED BY
PROJECT MANAGER	DATE	DRAWN BY
PROJECT ENGINEER	DATE	CHECKED BY

**KPG**  
PSOMAS  
Seattle  
3131 Elliott Avenue, Suite 400  
Seattle, WA 98121 206.286.1640  
Tacoma | Wenatchee | KPG.com

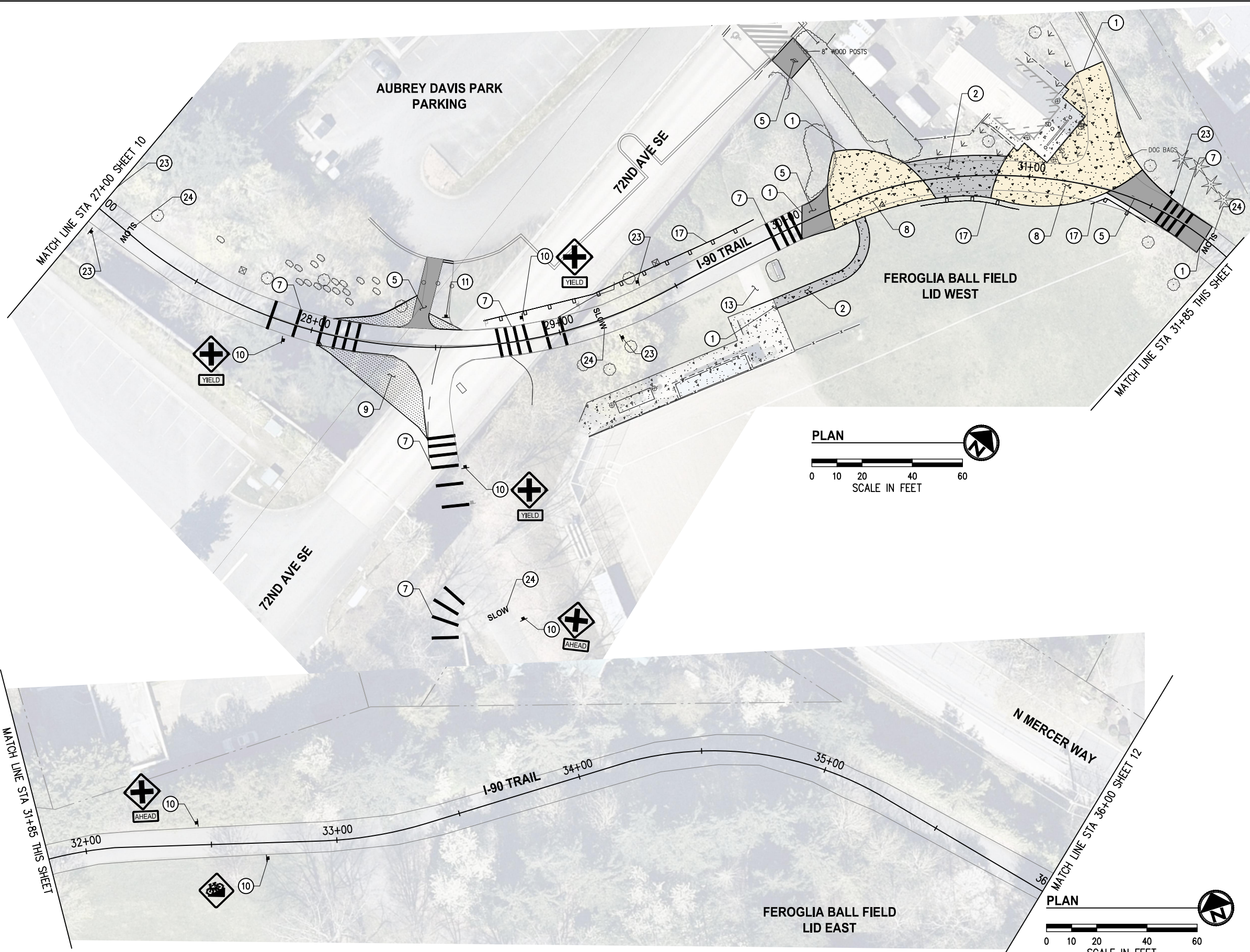
**30% REVIEW  
SUBMITTAL**



**CITY OF MERCER ISLAND  
AUBREY DAVIS PARK  
TRAIL SAFETY IMPROVEMENTS**

**TRAIL IMPROVEMENT PLANS  
STA 18+00 TO STA 27+00**  
KPG PROJECT No. 21098 SHT 10 OF 14

K:\PROJECTS\MERCER IS\21098-Aubrey Davis Park Improvements\DESIGN\Drawings\Contract\21098TRAIL.dwg 3/31/2023 10:52 AM

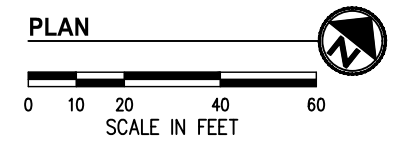


**GENERAL NOTES**

1. CONTRACTOR SHALL SEQUENCE REMOVAL OF EXISTING FEATURES WITH CONSTRUCTION OF TRAIL IMPROVEMENTS TO MINIMIZE IMPACTS TO TRAIL USERS.
2. CONTRACTOR SHALL PROVIDE AND MAINTAIN TEMPORARY PEDESTRIAN ROUTE AROUND CONSTRUCTION ACTIVITY FOR THE DURATION OF CONSTRUCTION.

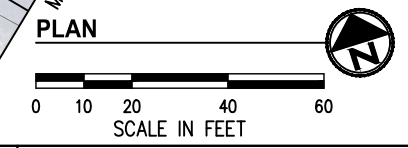
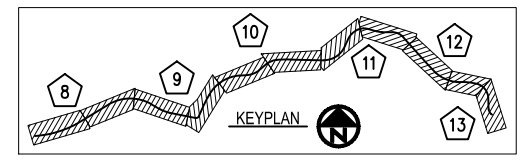
**CONSTRUCTION NOTES**

- ① MATCH EXISTING PAVEMENT EDGE, FLUSH.
- ② CONSTRUCT CEMENT CONC TRAIL. SEE TYPICAL SECTION, SHEET 14.
- ⑤ INSTALL HMA CL 1/2" PG58H-22 FOR WALKWAY. SEE TYPICAL SECTIONS, SHEET 14.
- ⑦ INSTALL PAINTED BAR PER DETAIL, SHEET 14.
- ⑧ INSTALL SCORED CEMENT CONCRETE WITH CONTRASTING TEXTURE OR PIGMENTED TREATMENT.
- ⑨ LOW GROWING VEGETATED SHOULDER AREA.
- ⑩ INSTALL WARNING SIGN.
- ⑪ INSTALL WAYFINDING SIGN.
- ⑬ LAWN RESTORATION.
- ⑰ INSTALL LOW FENCING.
- ⑳ ROTATING MOVABLE SHARED SPACE BANNER (INSTALLED BY CITY).
- ㉑ INSTALL PAINTED PAVEMENT MARKING.



**LEGEND**

- ▲ PROPOSED SIGN
- ▨ SCORED CEMENT CONC. WITH CONTRASTING TEXTURE OR PIGMENTED TREATMENT
- HMA TRAIL OR PAVEMENT
- ▩ DETECTABLE WARNING SURFACE
- ▧ CEMENT CONCRETE TRAIL
- ▤ LOW GROWING VEGETATED SHOULDER



NO.	DATE	BY	APPR.	REVISIONS

<b>Approved By</b>		21098TRAIL.dwg FILENAME	
ENGINEERING MANAGER	DATE	DESIGNED BY	DATE
PROJECT MANAGER	DATE	DRAWN BY	DATE
PROJECT ENGINEER	DATE	CHECKED BY	DATE

**KPG**  
PSOMAS  
Seattle  
3131 Elliott Avenue, Suite 400  
Seattle, WA 98121 206.286.1640  
Tacoma | Wenatchee | KPG.com

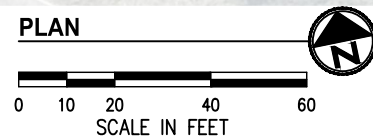
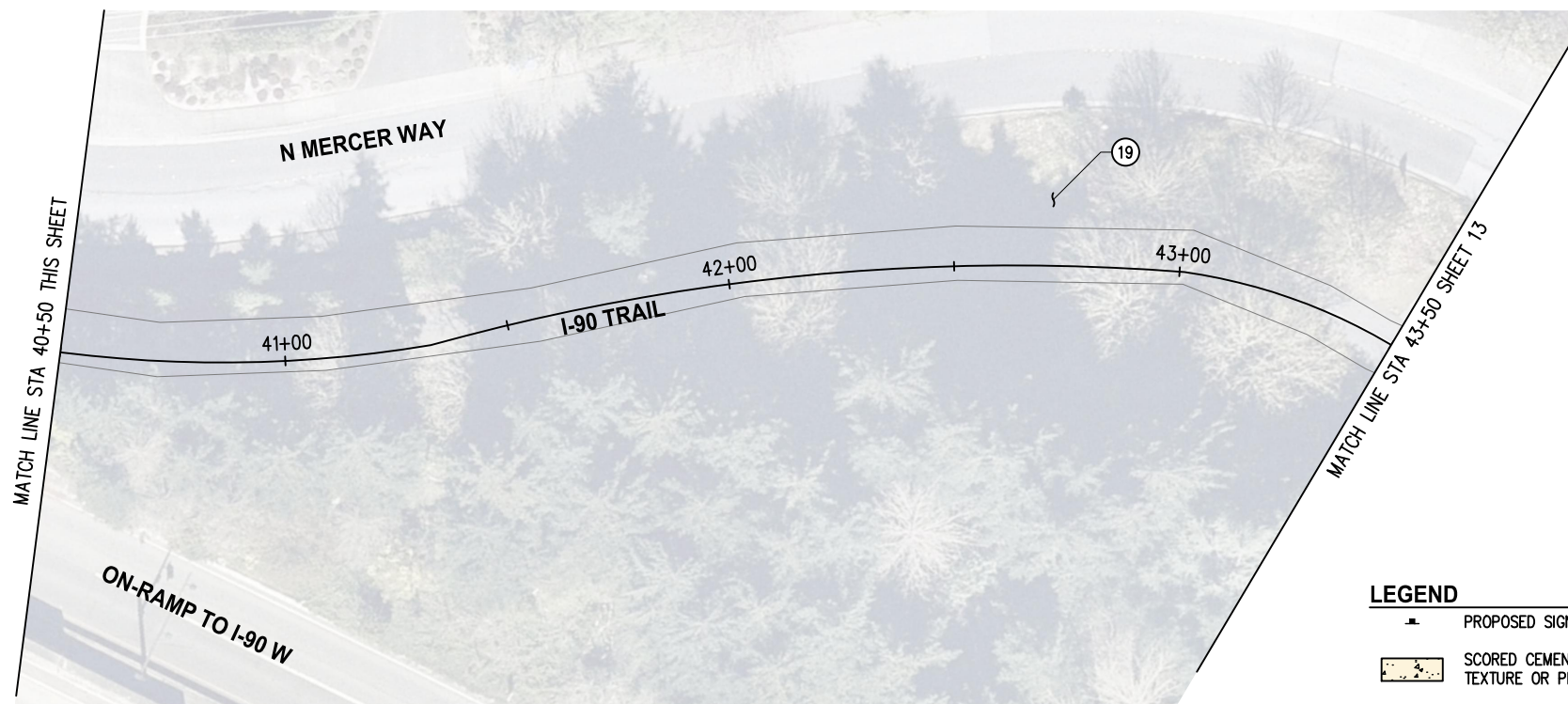
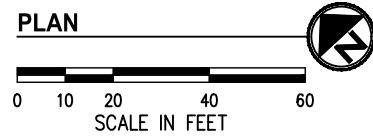
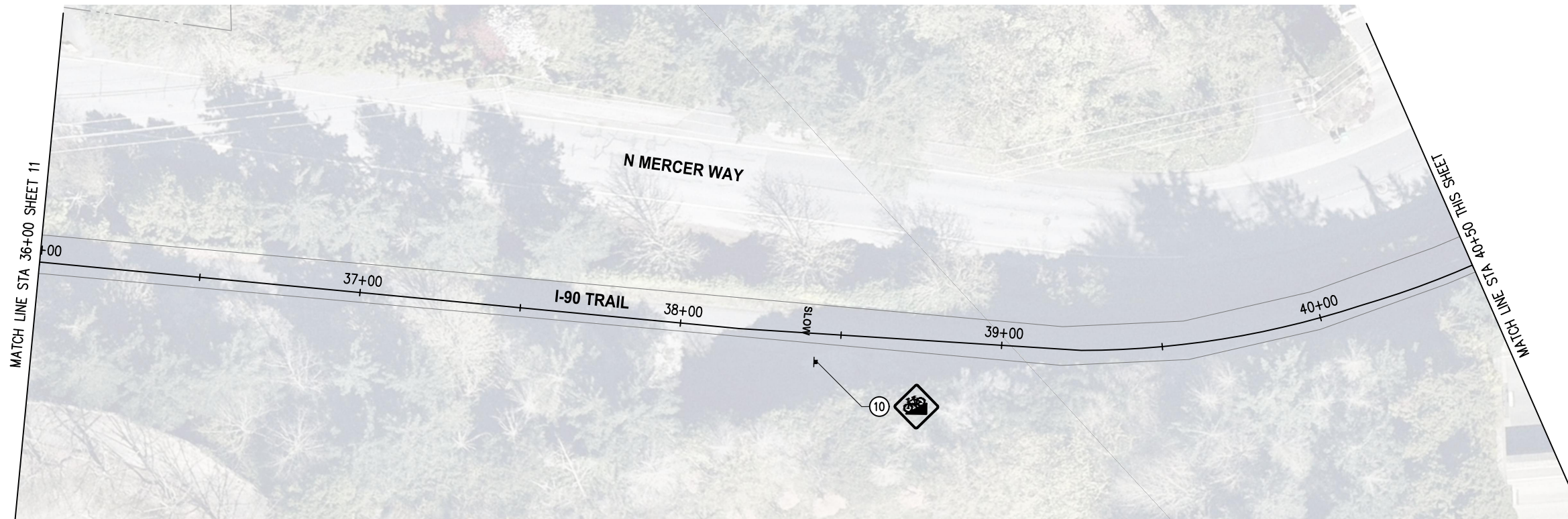
**30% REVIEW  
SUBMITTAL**



**CITY OF MERCER ISLAND  
AUBREY DAVIS PARK  
TRAIL SAFETY IMPROVEMENTS**

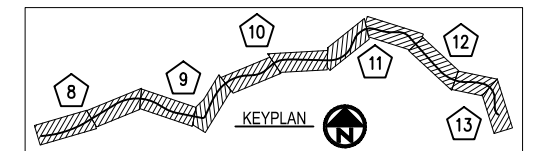
**TRAIL IMPROVEMENT PLANS  
STA 27+00 TO STA 36+00**  
KPG PROJECT No. 21098 | SHT 11 OF 14

K:\PROJECTS\MERCER IS\21098-Aubrey Davis Park Improvements\DESIGN\Drawings\Contract\21098TRAIL.dwg 3/31/2023 10:52 AM



**LEGEND**

- PROPOSED SIGN
- SCORED CEMENT CONC. WITH CONTRASTING TEXTURE OR PIGMENTED TREATMENT
- HMA TRAIL OR PAVEMENT
- DETECTABLE WARNING SURFACE
- CEMENT CONCRETE TRAIL



**GENERAL NOTES**

1. CONTRACTOR SHALL SEQUENCE REMOVAL OF EXISTING FEATURES WITH CONSTRUCTION OF TRAIL IMPROVEMENTS TO MINIMIZE IMPACTS TO TRAIL USERS.
2. CONTRACTOR SHALL PROVIDE AND MAINTAIN TEMPORARY PEDESTRIAN ROUTE AROUND CONSTRUCTION ACTIVITY FOR THE DURATION OF CONSTRUCTION.

**CONSTRUCTION NOTES**

10. INSTALL WARNING SIGN.
19. LOCATE EXISTING TRAIL CONNECTION. EXISTING VEGETATION SHALL BE TRIMMED, PRUNED, OR CLEARED FOR SIGHT DISTANCES ON I-90 TRAIL PER DIRECTION OF ENGINEER.

NO.	DATE	BY	APPR.	REVISIONS

<b>Approved By</b>		21098TRAIL.dwg FILENAME	
ENGINEERING MANAGER	DATE	DESIGNED BY	DATE
PROJECT MANAGER	DATE	DRAWN BY	DATE
PROJECT ENGINEER	DATE	CHECKED BY	DATE

**KPG**  
**PSOMAS**

Seattle  
3131 Elliott Avenue, Suite 400  
Seattle, WA 98121 206.286.1640  
Tacoma | Wenatchee | KPG.com

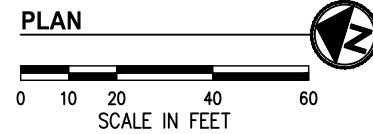
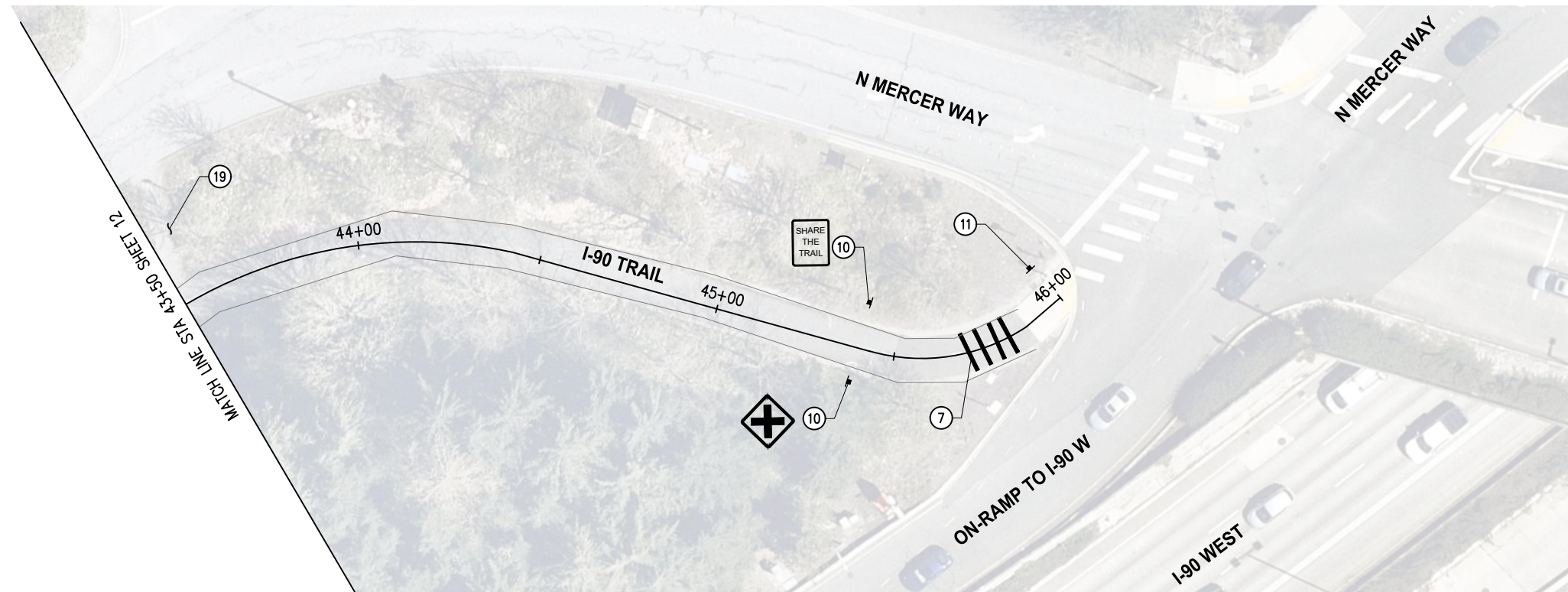
**30% REVIEW  
SUBMITTAL**



**CITY OF MERCER ISLAND  
AUBREY DAVIS PARK  
TRAIL SAFETY IMPROVEMENTS**

**TRAIL IMPROVEMENT PLANS  
STA 36+00 TO STA 43+50**

K:\PROJECTS\MERCER IS\21098-Aubrey Davis Park Improvements\DESIGN\Drawings\Contract\21098TRAIL.dwg 3/31/2023 10:52 AM



**GENERAL NOTES**

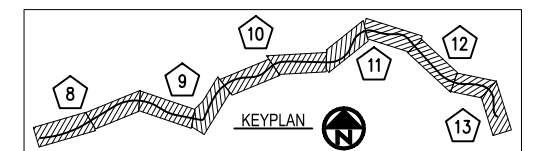
1. CONTRACTOR SHALL SEQUENCE REMOVAL OF EXISTING FEATURES WITH CONSTRUCTION OF TRAIL IMPROVEMENTS TO MINIMIZE IMPACTS TO TRAIL USERS.
2. CONTRACTOR SHALL PROVIDE AND MAINTAIN TEMPORARY PEDESTRIAN ROUTE AROUND CONSTRUCTION ACTIVITY FOR THE DURATION OF CONSTRUCTION.

**CONSTRUCTION NOTES**

7. INSTALL PAINTED BAR PER DETAIL, SHEET 14.
10. INSTALL WARNING SIGN.
11. INSTALL WAYFINDING SIGN.
19. LOCATE EXISTING TRAIL CONNECTION. EXISTING VEGETATION SHALL BE TRIMMED, PRUNED, OR CLEARED FOR SIGHT DISTANCES ON I-90 TRAIL PER DIRECTION OF ENGINEER.

**LEGEND**

- PROPOSED SIGN
- SCORED CEMENT CONC. WITH CONTRASTING TEXTURE OR PIGMENTED TREATMENT
- HMA TRAIL OR PAVEMENT
- DETECTABLE WARNING SURFACE
- CEMENT CONCRETE TRAIL



NO.	DATE	BY	APPR.	REVISIONS

Approved By		21098TRAIL.dwg FILENAME	
ENGINEERING MANAGER	DATE	DESIGNED BY	DATE
PROJECT MANAGER	DATE	DRAWN BY	DATE
PROJECT ENGINEER	DATE	CHECKED BY	DATE

**KPG**  
PSOMAS  
Seattle  
3131 Elliott Avenue, Suite 400  
Seattle, WA 98121 206.286.1640  
Tacoma | Wenatchee | KPG.com

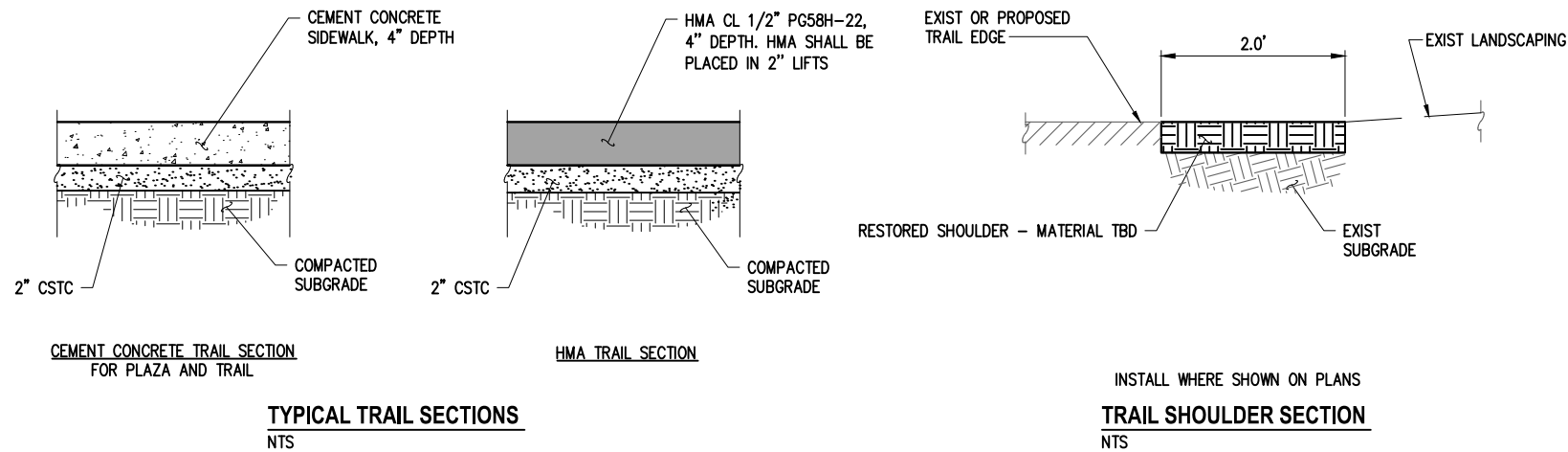
**30% REVIEW  
SUBMITTAL**



**CITY OF MERCER ISLAND  
AUBREY DAVIS PARK  
TRAIL SAFETY IMPROVEMENTS**

**TRAIL IMPROVEMENT PLANS  
STA 43+50 TO STA 46+00**  
KPG PROJECT No. 21098 SHT 13 OF 14

K:\PROJECTS\MERCER IS\21098-Aubrey Davis Park Improvements\DESIGN\Drawings\Contract\21098TRAIL-DET.dwg 3/31/2023 10:52 AM



**TYPICAL SECTION GENERAL NOTES**

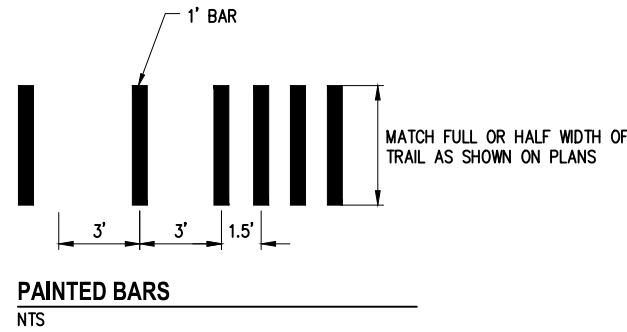
1. SUBGRADE PREPARATION SHALL BE IN ACCORDANCE WITH SECTION 2-06 OF THE STANDARD SPECIFICATIONS.
2. ADDITIONAL FILL MATERIAL REQUIRED FOR CONSTRUCTION SHALL BE APPROVED CRUSHED ROCK WHEN REQUIRED BY ENGINEER. FILL MATERIAL SHALL BE COMPACTED TO 95% MODIFIED PROCTOR DENSITY.
3. IF UNSUITABLE FOUNDATION IS ENCOUNTERED, THE CONTRACTOR SHALL CAREFULLY OVER EXCAVATE TO A MAXIMUM DEPTH OF 1.0' AND REPLACE WITH CRUSHED ROCK AS DIRECTED BY ENGINEER.
4. MAXIMUM COMPACTED HMA LIFT THICKNESS SHALL NOT EXCEED 0.17'.
5. ALL PAVEMENT SHALL BE CUT BY SAW CUTTING FULL DEPTH IN A NEAT VERTICAL LINE PRIOR TO REMOVING. ANY DAMAGE TO ADJACENT PAVEMENT SHALL BE REPAIRED BY THE CONTRACTOR AT NO EXPENSE TO THE OWNER.

**CEMENT CONCRETE TRAIL SECTION FOR PLAZA AND TRAIL**

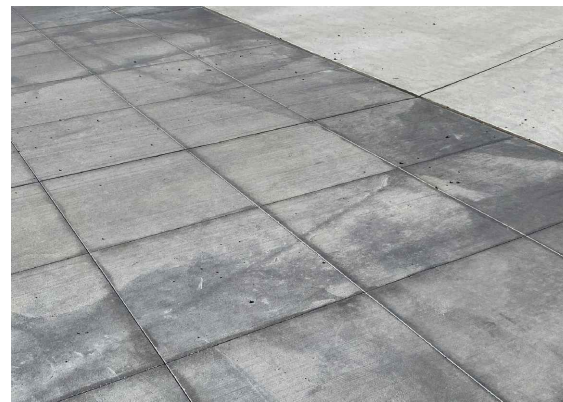
**HMA TRAIL SECTION**

INSTALL WHERE SHOWN ON PLANS  
**TRAIL SHOULDER SECTION**  
NTS

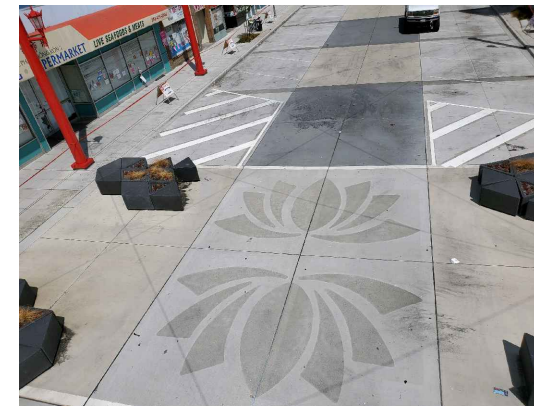
**TYPICAL TRAIL SECTIONS**  
NTS



**PAINTED BARS**  
NTS



PIGMENTED TREATMENT EXAMPLE - 77TH & SUNSET, MERCER ISLAND



CONTRASTING TEXTURE AND PIGMENTED TREATMENT EXAMPLE - YAKIMA AVE (MID-BLOCK), TACOMA



SCORED OR SAWCUT CONCRETE EXAMPLE

**SCORED CEMENT CONCRETE WITH CONTRASTING TEXTURE OR PIGMENTED TREATMENT - EXAMPLES**  
(FOR PLAZA OR TRAIL CEMENT CONCRETE)

NO.	DATE	BY	APPR.	REVISIONS

Approved By		21098TRAIL-DET.dwg FILENAME	
ENGINEERING MANAGER	DATE	DESIGNED BY	DATE
PROJECT MANAGER	DATE	DRAWN BY	DATE
PROJECT ENGINEER	DATE	CHECKED BY	DATE

**KPG**  
PSOMAS  
Seattle  
3131 Elliott Avenue, Suite 400  
Seattle, WA 98121 206.286.1640  
Tacoma | Wenatchee | KPG.com

**30% REVIEW  
SUBMITTAL**



CITY OF MERCER ISLAND  
AUBREY DAVIS PARK  
TRAIL SAFETY IMPROVEMENTS

TRAIL IMPROVEMENT DETAILS	
KPG PROJECT No. 21098	SHT 14 OF 14