



September 17, 2025

Mr. Danny Canjura
Tower Chief
Renton ATC Facility
616 W Perimeter Rd, Unit A
Renton, WA 98057

Dear Mr. Canjura,

The Mercer Island City Council would like to bring forward our community's increasing concerns regarding additional nighttime turbine aircraft operations, particularly low-altitude, noisy jet and turboprop overflights.

We respectfully request that Renton Tower prioritize routing turbine aircraft over the east channel during nighttime operations when weather conditions permit visual flight. In circumstances requiring instrument approaches, we encourage designating the safest and least intrusive procedures.

Our concern stems from the fact that the RNAV (GPS) Y Rwy 16 allows aircraft to descend to 780 feet MSL after AMILL waypoint, uncomfortably close to Mercer Island's elevations and tree canopy. By contrast, the RNAV (GPS) Z Rwy 16 procedure maintains higher minimums until WIBAT and follows a defined VNAV path, thereby improving both noise abatement and flight safety.

Accordingly, we support the RAAC recommendation that:

- The east channel visual path be designated as the preferred nighttime route in good weather.
- The RNAV (GPS) Z Rwy 16 procedure be identified as the primary instrument approach at night.
- The RNAV (GPS) Y Rwy 16 procedure be retained only as a limited-use backup, and not normally assigned to turbine aircraft.

In the longer term, we encourage coordination between Renton Airport, FAA, and Renton Tower to restore and expand RNAV RNP departure and approach procedures over the east channel. Boeing's prior use of the "Renton North" RNP departure for decades provides a

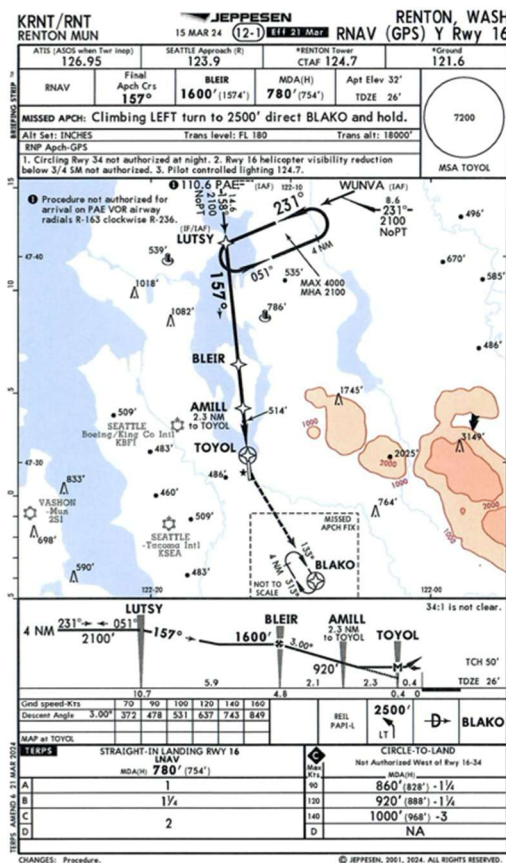
strong precedent for such procedures being both operationally feasible and beneficial for surrounding communities.

We appreciate your consideration of this matter and your role in ensuring safe, efficient, and community-sensitive operations at Renton.

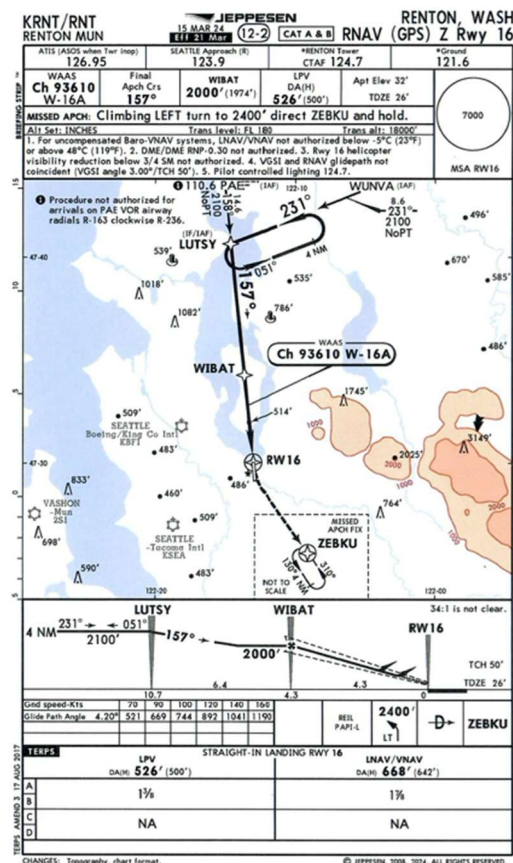
Sincerely,

Mayor Salim Nice
City of Mercer Island

KRNT RNAV (GPS) Rwy 16 Instrument Approach Procedures



Do not use at night
Do not use for turbine aircraft



Preferential for turbine aircraft use
at night, if unable to fly a visual
approach over the East Channel