



September 17, 2025

Mr. Manny Cruz
Director
Renton Municipal Airport
616 W Perimeter Rd, Unit A
Renton, WA 98057

Dear Mr. Cruz,

The Mercer Island City Council wishes to formally convey our growing concerns regarding significant increases in low-altitude, noisy jet and turboprop overflights occurring at night.

Whenever possible, turbine aircraft operating at night in good weather should utilize the east channel for takeoffs and landings. If weather conditions prevent visual operations over the channel, the most appropriate instrument procedures should be designated, those that provide both the greatest noise relief and the highest level of safety.

This matter involves both safety and community impacts. For example, the RNAV (GPS) Y Rwy 16 approach permits descents as low as 780 feet MSL after AMILL waypoint, while Mercer Island terrain and tree heights can approach or exceed 400 feet MSL. By contrast, the RNAV (GPS) Z Rwy 16 procedure maintains higher altitudes, 2,000 feet MSL to WIBAT, before descending along a defined vertical navigation path. This offers a safer and less noisy alternative.

For these reasons, we support the RAAC recommendation that Renton Airport Management and the Renton ATC Tower work together to:

- Designate the east channel path as the preferred nighttime visual route when weather permits.
- Identify the RNAV (GPS) Z Rwy 16 as the preferential instrument approach during nighttime conditions requiring IFR procedures.
- Limit the use of the RNAV (GPS) Y Rwy 16 procedure to a secondary role, primarily as backup, and generally not assign it to turbine aircraft.

Looking further ahead, it is essential that Renton Airport and the FAA develop and implement RNAV RNP departures and approaches over the east channel for turbine

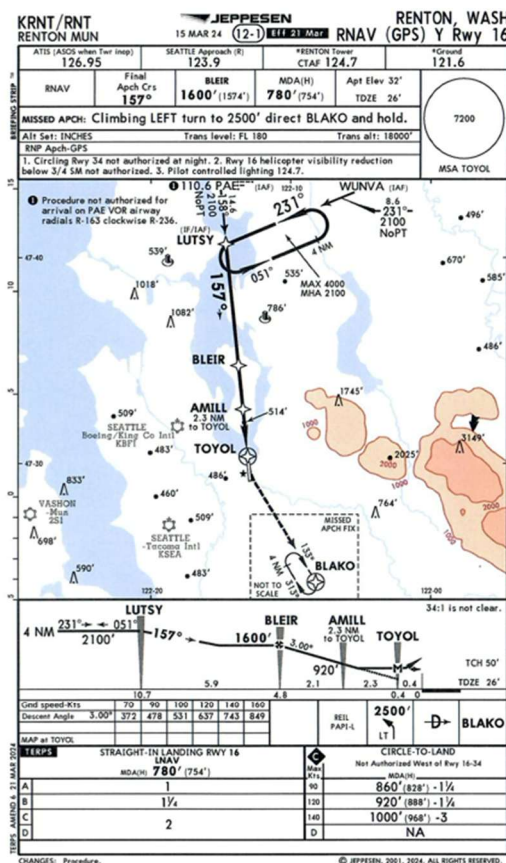
aircraft. Boeing's long-standing use of "special" RNP departures, such as the historic "Renton North" First Flight path, demonstrates that these procedures can be implemented safely and to the benefit of surrounding communities.

We appreciate your attention to this matter, which directly affects the safety and quality of life of Mercer Island residents.

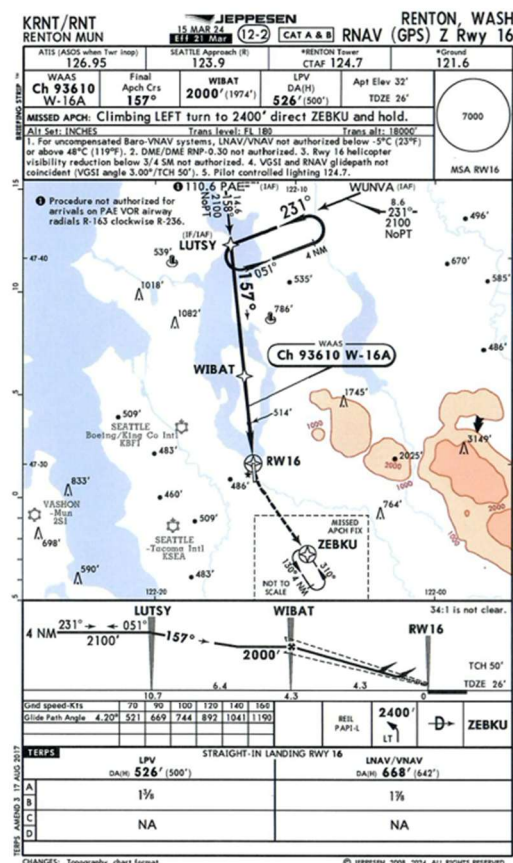
Sincerely,

Mayor Salim Nice
City of Mercer Island

KRNT RNAV (GPS) Rwy 16 Instrument Approach Procedures



Do not use at night
Do not use for turbine aircraft



Preferential for turbine aircraft use
at night, if unable to fly a visual
approach over the East Channel