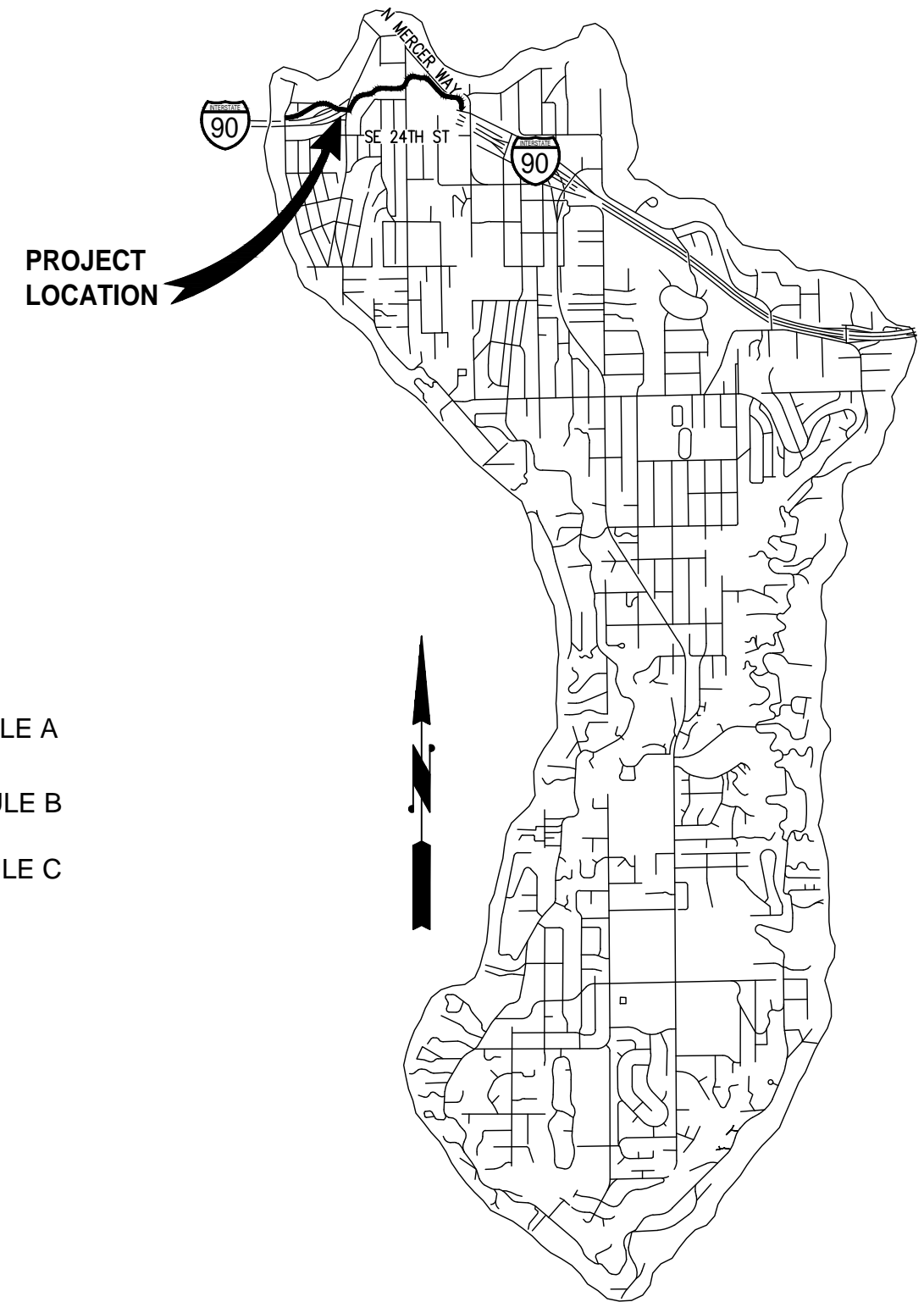




CITY OF MERCER ISLAND

AUBREY DAVIS PARK TRAIL SAFETY IMPROVEMENTS MAY 2022

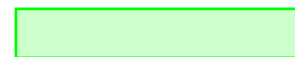
CITY PROJECT NUMBER: XXX



SCHEDULE OF DRAWINGS

SHEET	DRAWINGS
1	COVER SHEET
2-3	SHEET INDEX, SURVEY CONTROL AND ALIGNMENT DATA
4	LEGEND AND ABBREVIATIONS
5-7	TESC AND SITE PREPARATION PLANS
8	TESC AND SITE PREPARATION DETAILS
9-11	TRAIL IMPROVEMENT PLANS
15	TRAIL IMPROVEMENT DETAILS*
16-18	SITE ELEMENT PLANS
19	SITE ELEMENT DETAILS
* 20-22	LANDSCAPE RESTORATION PLANS
* 23-24	LANDSCAPE SCHEDULE AND DETAILS
* 25-27	IRRIGATION RESTORATION PLANS
* 28	IRRIGATION SCHEDULE AND DETAILS
* 29-32	SIGN SCHEDULE AND DETAILS

* THESE SHEETS SCHEDULED FOR 90% SUBMITTAL



SCHEDULE A



SCHEDULE B

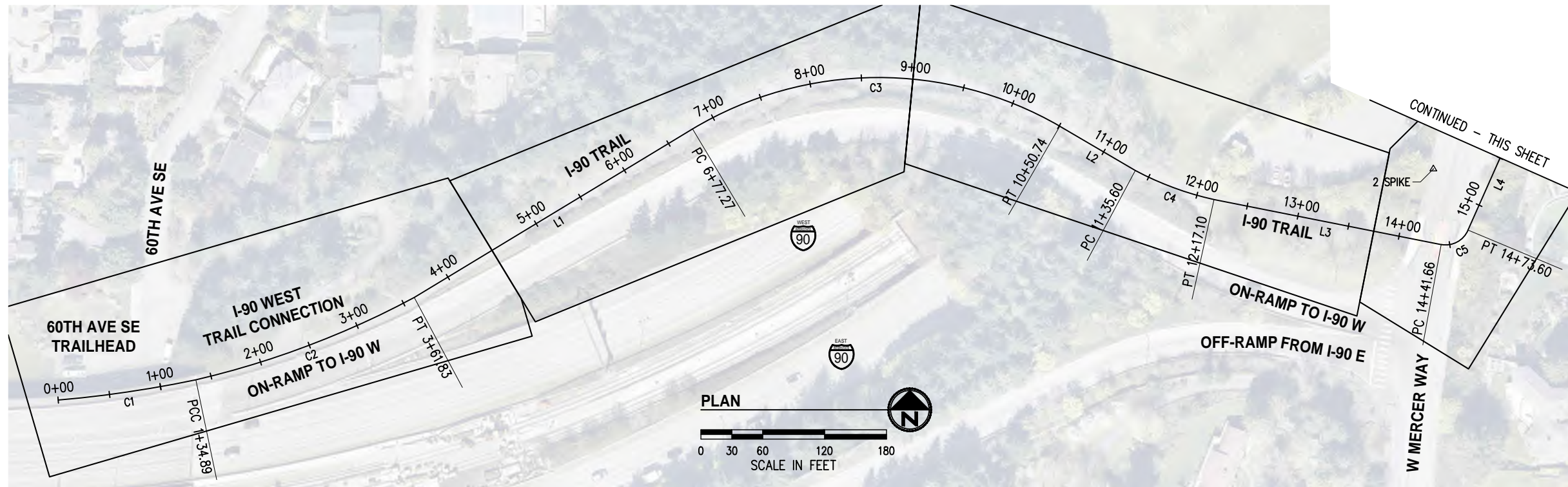


SCHEDULE C

CALL 2 DAYS
BEFORE YOU DIG
1-800-424-5555

30% REVIEW
SUBMITTAL

K:\PROJECTS\MERCER IS\21098-Aubrey Davis Park Improvements\DESIGN\Drawings\Contract\21098SURVCTRL.dwg 5/10/2022 7:45 PM



NOTES

1. THE PURPOSE OF THIS TOPOGRAPHIC SURVEY IS FOR CIVIL ENGINEERING DESIGN. THIS IS NOT A BOUNDARY SURVEY. SOURCES OF BOUNDARY INFORMATION AS SHOWN INCLUDE FIELD-TIED MONUMENTATION, PLATS, COUNTY RECORDS OF SURVEY, AND AUDITOR INDEXING INFORMATION.
2. THE LOCATIONS OF EXISTING UNDERGROUND UTILITY SYSTEMS, AS SHOWN HEREON, ARE TAKEN FROM UTILITY LOCATE PAINT MARKS OR AS-BUILT PLANS AND ARE SHOWN IN AN APPROXIMATE WAY ONLY.

THE CONTRACTOR SHALL DETERMINE THE EXACT LOCATION OF ALL EXISTING UTILITIES BEFORE COMMENCING WORK, AND AGREES TO BE FULLY RESPONSIBLE FOR ANY AND ALL DAMAGES WHICH MIGHT BE OCCASIONED BY THE CONTRACTOR'S FAILURE TO EXACTLY LOCATE AND PRESERVE ANY AND ALL UNDERGROUND UTILITIES. ALL LOCATOR SERVICES SHOULD BE CONTACTED PRIOR TO ANY CONSTRUCTION OR SUBSURFACE EXPLORATION. CALL 1-800-424-5555.
3. FIELD SURVEY: KPG, NOVEMBER, 2021. LICENSEE MICHAEL R. BOWEN, P.L.S. NO. 29294/RONALD D. REICHEL, P.L.S. NO. 38015.
4. CONTOUR INTERVAL = 1 FOOT, ±0.5 FOOT PER NATIONAL MAPPING STANDARDS. CONTOURS DERIVED FROM DIRECT FIELD OBSERVATIONS.
5. STORM AND SEWER CONNECTIONS HAVE BEEN DRAWN FROM CENTER OF LID TO CENTER OF LID.
6. THE LOCATIONS AND DIMENSIONS OF UNDERGROUND VAULTS HAVE NOT BEEN VERIFIED AND ARE APPROXIMATE.

HORIZONTAL AND VERTICAL DATUM

HORIZONTAL DATUM: NAD 83/11

VERTICAL DATUM: NAVD 88

HORIZONTAL AND VERTICAL DATUMS ESTABLISHED BY RTK GPS OBSERVATION UTILIZING WSRN (WASHINGTON STATE REFERENCE NETWORK) ALSO REFERENCING KPG JOB NUMBER 19033.

I-90 TRAIL			
NUMBER	LENGTH	RADIUS	BRNG/DELTA
C1	134.89	1127.09'	6°51'26"
C2	226.93	866.19'	15°00'39"
C3	373.47	350.67'	61°01'17"
C4	81.50	295.72'	15°47'25"
C5	31.93	23.56'	77°39'24"
C6	90.82	711.38'	7°18'53"
C7	312.82	315.72'	56°46'12"
C8	69.08	1819.45'	2°10'31"
C9	102.05	183.33'	31°53'39"
C10	86.06	161.95'	30°26'44"
C11	123.34	695.38'	10°09'46"
L1	315.442		N 58°46'42" E
L2	84.862		S 59°39'03" E
L3	224.567		S 78°46'35" E
L4	106.165		N 23°55'59" E
L5	82.209		N 49°31'50" E
L6	279.060		S 88°42'08" E

CONTROL POINT LIST				
PT #	DESCRIPTION	NORTHING	EASTING	ELEVATION
2	SPIKE	218611.57	1291363.16	132.74'
3	SPIKE	218994.76	1291481.64	133.62'
100	MAG-FL	218875.02	1291640.28	141.68'
101	MAG-FL	218891.80	1291814.64	154.79'
102	MAG-FL	219025.76	1292035.53	170.72'
103	MAG-FL	219014.32	1292304.75	167.34'
104	MAG-FL	219032.01	1292518.47	151.16'
105	MAG-FL	219215.42	1292658.91	141.86'
106	SPIKE	219249.71	1292560.03	141.51'
107	SPIKE	219295.67	1292715.03	138.94'

NO.	DATE	BY	APPR.	REVISIONS

Approved By		21098SURVCTRL.dwg
ENGINEERING MANAGER	DATE	FILENAME
PROJECT MANAGER	DATE	DESIGNED BY
PROJECT ENGINEER	DATE	DRAWN BY
		CHECKED BY
		DATE

KPG
P S O M A S
Seattle
3131 Elliott Avenue, Suite 400
Seattle, WA 98121 206.286.1640
Tacoma | Wenatchee | KPG.com

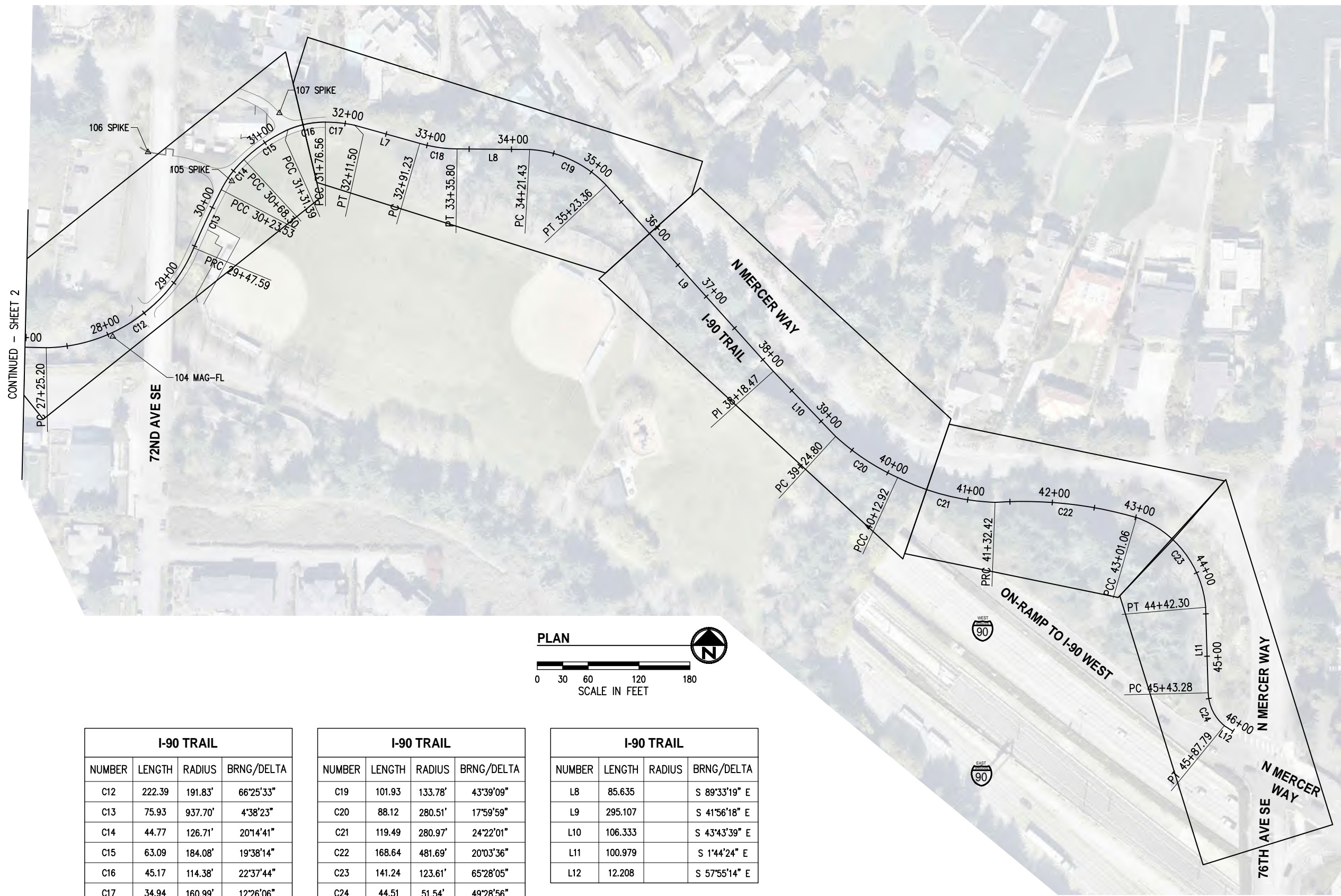
**30% REVIEW
SUBMITTAL**



**CITY OF MERCER ISLAND
AUBREY DAVIS PARK
TRAIL SAFETY IMPROVEMENTS**

SHEET INDEX, SURVEY CONTROL AND ALIGNMENT DATA - 1	
KPG PROJECT No. 21098	SHT <u>2</u> OF <u>18</u>

K:\PROJECTS\MERCER IS\21098-Aubrey Davis Park Improvements\DESIGN\Drawings\Contract\21098SURVCTRL.dwg 5/10/2022 7:45 PM



NOTES

1. THE PURPOSE OF THIS TOPOGRAPHIC SURVEY IS FOR CIVIL ENGINEERING DESIGN. THIS IS NOT A BOUNDARY SURVEY. SOURCES OF BOUNDARY INFORMATION AS SHOWN INCLUDE FIELD-TIED MONUMENTATION, PLATS, COUNTY RECORDS OF SURVEY, AND AUDITOR INDEXING INFORMATION.
2. THE LOCATIONS OF EXISTING UNDERGROUND UTILITY SYSTEMS, AS SHOWN HEREON, ARE TAKEN FROM UTILITY LOCATE PAINT MARKS OR AS-BUILT PLANS AND ARE SHOWN IN AN APPROXIMATE WAY ONLY.

THE CONTRACTOR SHALL DETERMINE THE EXACT LOCATION OF ALL EXISTING UTILITIES BEFORE COMMENCING WORK, AND AGREES TO BE FULLY RESPONSIBLE FOR ANY AND ALL DAMAGES WHICH MIGHT BE OCCASIONED BY THE CONTRACTOR'S FAILURE TO EXACTLY LOCATE AND PRESERVE ANY AND ALL UNDERGROUND UTILITIES. ALL LOCATOR SERVICES SHOULD BE CONTACTED PRIOR TO ANY CONSTRUCTION OR SUBSURFACE EXPLORATION. CALL 1-800-424-5555.
3. FIELD SURVEY: KPG, NOVEMBER, 2021. LICENSEE MICHAEL R. BOWEN, P.L.S. NO. 29294/RONALD D. REICHEL, P.L.S. NO. 38015.
4. CONTOUR INTERVAL = 1 FOOT, ±0.5 FOOT PER NATIONAL MAPPING STANDARDS. CONTOURS DERIVED FROM DIRECT FIELD OBSERVATIONS.
5. STORM AND SEWER CONNECTIONS HAVE BEEN DRAWN FROM CENTER OF LID TO CENTER OF LID.
6. THE LOCATIONS AND DIMENSIONS OF UNDERGROUND VAULTS HAVE NOT BEEN VERIFIED AND ARE APPROXIMATE.

HORIZONTAL AND VERTICAL DATUM

HORIZONTAL DATUM: NAD 83/11
 VERTICAL DATUM: NAVD 88
 HORIZONTAL AND VERTICAL DATUMS ESTABLISHED BY RTK GPS OBSERVATION UTILIZING WSRN (WASHINGTON STATE REFERENCE NETWORK) ALSO REFERENCING KPG JOB NUMBER 19033.

CONTROL POINT LIST				
PT #	DESCRIPTION	NORTHING	EASTING	ELEVATION
2	SPIKE	218611.57	1291363.16	132.74'
3	SPIKE	218994.76	1291481.64	133.62'
100	MAG-FL	218875.02	1291640.28	141.68'
101	MAG-FL	218891.80	1291814.64	154.79'
102	MAG-FL	219025.76	1292035.53	170.72'
103	MAG-FL	219014.32	1292304.75	167.34'
104	MAG-FL	219032.01	1292518.47	151.16'
105	MAG-FL	219215.42	1292658.91	141.86'
106	SPIKE	219249.71	1292560.03	141.51'
107	SPIKE	219295.67	1292715.03	138.94'

I-90 TRAIL			
NUMBER	LENGTH	RADIUS	BRNG/DELTA
C12	222.39	191.83'	66°25'33"
C13	75.93	937.70'	4°38'23"
C14	44.77	126.71'	20°14'41"
C15	63.09	184.08'	19°38'14"
C16	45.17	114.38'	22°37'44"
C17	34.94	160.99'	12°26'06"
C18	44.57	166.20'	15°21'48"

I-90 TRAIL			
NUMBER	LENGTH	RADIUS	BRNG/DELTA
C19	101.93	133.78'	43°39'09"
C20	88.12	280.51'	17°59'59"
C21	119.49	280.97'	24°22'01"
C22	168.64	481.69'	20°03'36"
C23	141.24	123.61'	65°28'05"
C24	44.51	51.54'	49°28'56"
L7	79.731		S 74°25'05" E

I-90 TRAIL			
NUMBER	LENGTH	RADIUS	BRNG/DELTA
L8	85.635		S 89°33'19" E
L9	295.107		S 41°56'18" E
L10	106.333		S 43°43'39" E
L11	100.979		S 1°44'24" E
L12	12.208		S 57°55'14" E

NO.	DATE	BY	APPR.	REVISIONS

Approved By		21098SURVCTRL.dwg
ENGINEERING MANAGER	DATE	FILENAME
PROJECT MANAGER	DATE	DESIGNED BY
PROJECT ENGINEER	DATE	DRAWN BY
		CHECKED BY
		DATE

KPG
 PSOMAS
 Seattle
 3131 Elliott Avenue, Suite 400
 Seattle, WA 98121 206.286.1640
 Tacoma | Wenatchee | KPG.com

**30% REVIEW
 SUBMITTAL**



CITY OF MERCER ISLAND
 AUBREY DAVIS PARK
 TRAIL SAFETY IMPROVEMENTS

SHEET INDEX, SURVEY CONTROL AND ALIGNMENT DATA - 2	
KPG PROJECT No. 21098	SHT <u>3</u> OF <u>18</u>

EXISTING LEGEND

MIC	MONUMENT IN CASE	Ⓣ	TELEPHONE MANHOLE
MON	SURFACE MONUMENT	T	TELEPHONE RISER
RC	REBAR & CAP	TV	TELEPHONE VAULT LID
⊗	SPOT SHOT (DESCRIBED)	Ⓣ	TELEPHONE POLE
□	CATCH BASIN	TV	TV VAULT LID
⊙	STORM DRAIN MANHOLE	Ⓣ	FIBER OPTIC MANHOLE
Ⓣ	YARD DRAIN	Ⓣ	GAS VALVE
⊙	DOWNSPOUT	Ⓣ	GAS METER
SD	STORM DRAIN CLEAN-OUT	Ⓣ	WATER VALVE
⊙	SEWER MANHOLE	Ⓣ	WATER METER
SS	SEWER CLEAN-OUT	Ⓣ	WATER MANHOLE
⊙	POWER POLE	Ⓣ	FIRE HYDRANT
⊙	POWER POLE WITH UG CONNECT	Ⓣ	FIRE DEPARTMENT CONNECT
P	POWER VAULT LID	UV	UTILITY VAULT LID (GENERIC/UNKNOWN)
△	POWER TRANSFORMER	U	UTILITY ACCESS (GENERIC/UNKNOWN)
Ⓣ	POWER METER	•	BORE SITE (WITH FIELD DESCRIPTION)
⊙	POWER OUTLET	○	BOULDER
→	GUY ANCHOR	Ⓣ	SIGN
Ⓣ	TRAFFIC SIGNAL WITH LUMINAIRE	Ⓣ	MAILBOX
⊗	PEDESTRIAN SIGNAL	Ⓣ	SHRUB
Ⓣ	JUNCTION BOX TYPE 1, 2, 3	∨	GRASS
TR	TRAFFIC CONTROL CABINET	DT12(3)	DECIDUOUS TREE, DIAM. IN INCHES (# OF TRUNKS)
Ⓣ	TRAFFIC SERVICE CABINET	CT12(3)	CONIFEROUS TREE, DIAM. IN INCHES (# OF TRUNKS)
○	TRAFFIC ATTENUATOR LOOP		
Ⓣ	STREET LIGHT (LUMINAIRE)		
Ⓣ	LOT LIGHT		
Ⓣ	YARD LIGHT		

P	PAINTED POWER
T	PAINTED TELEPHONE
FO	PAINTED FIBER OPTIC
TV	PAINTED TV
W	PAINTED WATER
G	PAINTED GAS
SD	STORM
S	SEWER
X	FENCE
~~~~~	HEDGE (HEIGHT NOTED)
//////	BUILDING
————	PAINTED STRIPE
.....	RAISED-BUTTON SOLID STRIPE
.....	RAISED-BUTTON SKIP STRIPE
————	EDGE OF PAVEMENT
-----	FLOWLINE
-----	CONTOUR
-----	EXISTING RIGHT-OF-WAY LINE
-----	PROPERTY LINE
Ⓣ	CONCRETE
Ⓣ	GRAVEL
Ⓣ	BRICK
Ⓣ	METAL GRATE

**PROPOSED LEGEND**

■	CONC INLET OR CATCH BASIN TYPE 1
⊙	CATCH BASIN TYPE 2
⊙	SEWER MANHOLE
→	STORM PIPE WITH DIRECTION OF FLOW
→	SEWER PIPE WITH DIRECTION OF FLOW
→	SIDE SEWER WITH CLEANOUT
————	WATER PIPE
Ⓣ	WATER METER
Ⓣ	WATER VALVE
Ⓣ	FIRE HYDRANT
Ⓣ	SIGN
X	CHAIN LINK FENCE
F	FILL EMBANKMENT LINE
C	CUT EMBANKMENT LINE
Ⓣ	DETECTABLE WARNING SURFACE
Ⓣ	HMA CL 1/2" PG 64-22 FOR NEW PAVEMENT
Ⓣ	REMOVE ASPHALT CONC PAVEMENT (ON SITE PREPARATION PLANS)
Ⓣ	CEMENT CONCRETE
Ⓣ	PERVIOUS CEMENT CONCRETE
Ⓣ	RESERVOIR COURSE
Ⓣ	CSTC
Ⓣ	CSBC
Ⓣ	TREE GRATE
Ⓣ	DECORATIVE PEDESTRIAN LUMINAIRES AND POLE
Ⓣ	SIGNAL POLE WITH DECORATIVE LUMINAIRE AND MAST ARM
Ⓣ	SIGNAL CONTROLLER CABINET
Ⓣ	ELECTRICAL SERVICE CABINET
Ⓣ	BATTERY BACKUP POWER SUPPLY
Ⓣ	JUNCTION BOX TYPE 1, 2, 8
---	CONDUIT

**ABBREVIATIONS**

AC	ASPHALT CONCRETE	MIC	MONUMENT IN CASE
ACP	ASPHALT CONCRETE PAVEMENT	MJ	MECHANICAL JOINT
ADA	AMERICANS WITH DISABILITIES ACT	MON	MONUMENT
AP	ANGLE POINT	N	NORTH OR NORTHING
APPROX	APPROXIMATE	NAVD	NORTH AMERICAN VERTICAL DATUM
BLDG	BUILDING	NO	NUMBER
CB	CATCH BASIN	NTS	NOT TO SCALE
CCP	CEMENT CONCRETE PAVEMENT	OC	ON CENTER
CDF	CONTROLLED DENSITY FILL	OD	OUTSIDE DIAMETER
CHLK	CHAINLINK	PC	POINT OF CURVE
CL	CENTERLINE	PCC	POINT OF COMPOUND CURVATURE
CL	CLASS	PCCP	PERVIOUS CEMENT CONCRETE PAVEMENT
CO	CLEANOUT	PI	POINT OF INTERSECTION
COMI	CITY OF MERCER ISLAND	POB	POINT OF BEGINNING
COL	COLUMN CONC CONCRETE	POE	POINT OF ENDING
CSBC	CRUSHED SURFACING BASE COURSE	PRC	POINT OF REVERSE CURVATURE
CSTC	CRUSHED SURFACING TOP COURSE	PT	POINT OF TANGENT
DI	DUCTILE IRON	PVC	POLYVINYL CHLORIDE OR
DIA	DIAMETER		POINT OF VERTICAL CURVATURE
DW	DRIVEWAY	PVT	POINT OF VERTICAL TANGENT
E	EAST OR EASTING	PVI	POINT OF VERTICAL INTERSECTION
EA	EACH	R	RADIUS
ELEV	ELEVATION	ROW	RIGHT OF WAY
EOP	EDGE OF PAVEMENT	RT	RIGHT
EW	EACH WAY	S	SLOPE OR SOUTH
EXIST	EXISTING	SD	STORM DRAIN
FF	FINISHED FLOOR	SDMH	STORM DRAIN MANHOLE
FL	FLOW LINE	SE	SOUTHEAST
FO	FIBER OPTIC	SHT	SHEET
FOC	FACE OF CURB	SQ	SQUARE
HMA	HOT MIX ASPHALT	SS	SANITARY SEWER
HORIZ	HORIZONTAL	SSMH	SANITARY SEWER MANHOLE
HP	HIGH POINT	ST	STREET
ID	INSIDE DIAMETER	STA	STATION
IE	INVERT ELEVATION	STD	STANDARD
IN	INCH/INCHES	STCR	STRUCTURE
JB	JUNCTION BOX	SW	SOUTHWEST
L	LENGTH LT LEFT	TYP	TYPICAL
LF	LINEAR FEET	VERT	VERTICAL
LP	LOW POINT	W	WEST
MAX	MAXIMUM	YD	YARD DRAIN
MIN	MINIMUM		
MH	MANHOLE		

K:\PROJECTS\MERCER IS\21098-Aubrey Davis Park Improvements\DESIGN\Drawings\Contract\21098LEG-ABBRV.dwg 5/10/2022 7:45 PM

NO.	DATE	BY	APPR.	REVISIONS

Approved By		21098LEG-ABBRV.dwg FILENAME	
ENGINEERING MANAGER	DATE	DESIGNED BY	DATE
PROJECT MANAGER	DATE	DRAWN BY	DATE
PROJECT ENGINEER	DATE	CHECKED BY	DATE

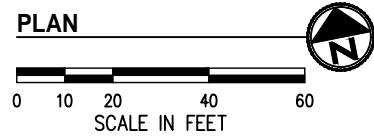
**KPG**  
PSOMAS  
Seattle  
3131 Elliott Avenue, Suite 400  
Seattle, WA 98121 206.286.1640  
Tacoma | Wenatchee | KPG.com

**30% REVIEW  
SUBMITTAL**



**CITY OF MERCER ISLAND  
AUBREY DAVIS PARK  
TRAIL SAFETY IMPROVEMENTS**

K:\PROJECTS\MERCER IS\21098-Aubrey Davis Park Improvements\DESIGN\Drawings\Contract\21098TESC-SP.dwg 5/10/2022 7:46 PM



**GENERAL NOTES**

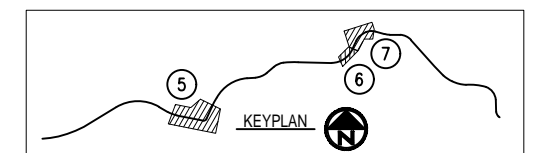
1. CONTRACTOR SHALL SEQUENCE REMOVAL OF EXISTING FEATURES WITH CONSTRUCTION OF NEW ROADWAY ELEMENTS TO MINIMIZE IMPACTS TO PROPERTY OWNERS, TRAFFIC FLOW, AND THE ENVIRONMENT.
2. CONTRACTOR SHALL PROTECT ALL ABOVE AND BELOW GROUND UTILITIES AND IMPROVEMENTS THAT ARE TO REMAIN.
3. CONTRACTOR SHALL PROTECT ALL PLANT MATERIAL OUTSIDE OF CLEARING LIMITS.
4. CONTRACTOR SHALL MAINTAIN ACCESS FOR ALL ADJACENT PROPERTY OWNERS AND PARK USERS.
5. CONTRACTOR SHALL FURNISH AND INSTALL INLET PROTECTION IN ALL EXISTING AND NEW CATCH BASINS. CONTRACTOR SHALL INSTALL OTHER EROSION CONTROL MEASURES TO MINIMIZE SEDIMENT MIGRATION INTO STREAMS AND STORM DRAINAGE SYSTEMS.

**CONSTRUCTION NOTES**

- ① SAWCUT AND REMOVE ASPHALT PAVEMENT.
- ② SAWCUT AND REMOVE CONCRETE PAVEMENT.
- ③ PRESERVE AND PROTECT.
- ④ REMOVE.
- ⑤ REMOVE GROUND COVER WITHIN CLEARING LIMITS AS NECESSARY TO INSTALL PROPOSED IMPROVEMENTS.
- ⑥ REMOVE SHRUB(S) AND BUSH(ES).
- ⑦ TRIM/PRUNE EXISTING TREE(S), BUSH(ES), AND SHRUB(S) PER COMI STD DETAIL UF-4 AS NECESSARY TO INSTALL PROPOSED IMPROVEMENTS.
- ⑧ POLE TO BE RELOCATED PRIOR TO OR DURING CONSTRUCTION. CITY TO COORDINATE WITH WSDOT.
- ⑨ SAWCUT AND REMOVE CEMENT CONCRETE CURB AND GUTTER.
- ⑩ REMOVE BOLLARDS.

**LEGEND**

- REMOVE CEMENT CONC PAVEMENT
- REMOVE ASPHALT PAVEMENT
- REMOVE CURB AND GUTTER
- REMOVE DECIDUOUS TREE
- SAWCUT
- HIGH VISIBILITY FENCE
- CLEARING LIMITS



NO.	DATE	BY	APPR.	REVISIONS

Approved By		21098TESC-SP.dwg FILENAME	
ENGINEERING MANAGER	DATE	DESIGNED BY	DATE
PROJECT MANAGER	DATE	DRAWN BY	DATE
PROJECT ENGINEER	DATE	CHECKED BY	DATE

**KPG**  
PSOMAS  
Seattle  
3131 Elliott Avenue, Suite 400  
Seattle, WA 98121 206.286.1640  
Tacoma | Wenatchee | KPG.com

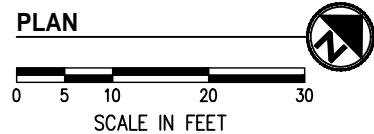
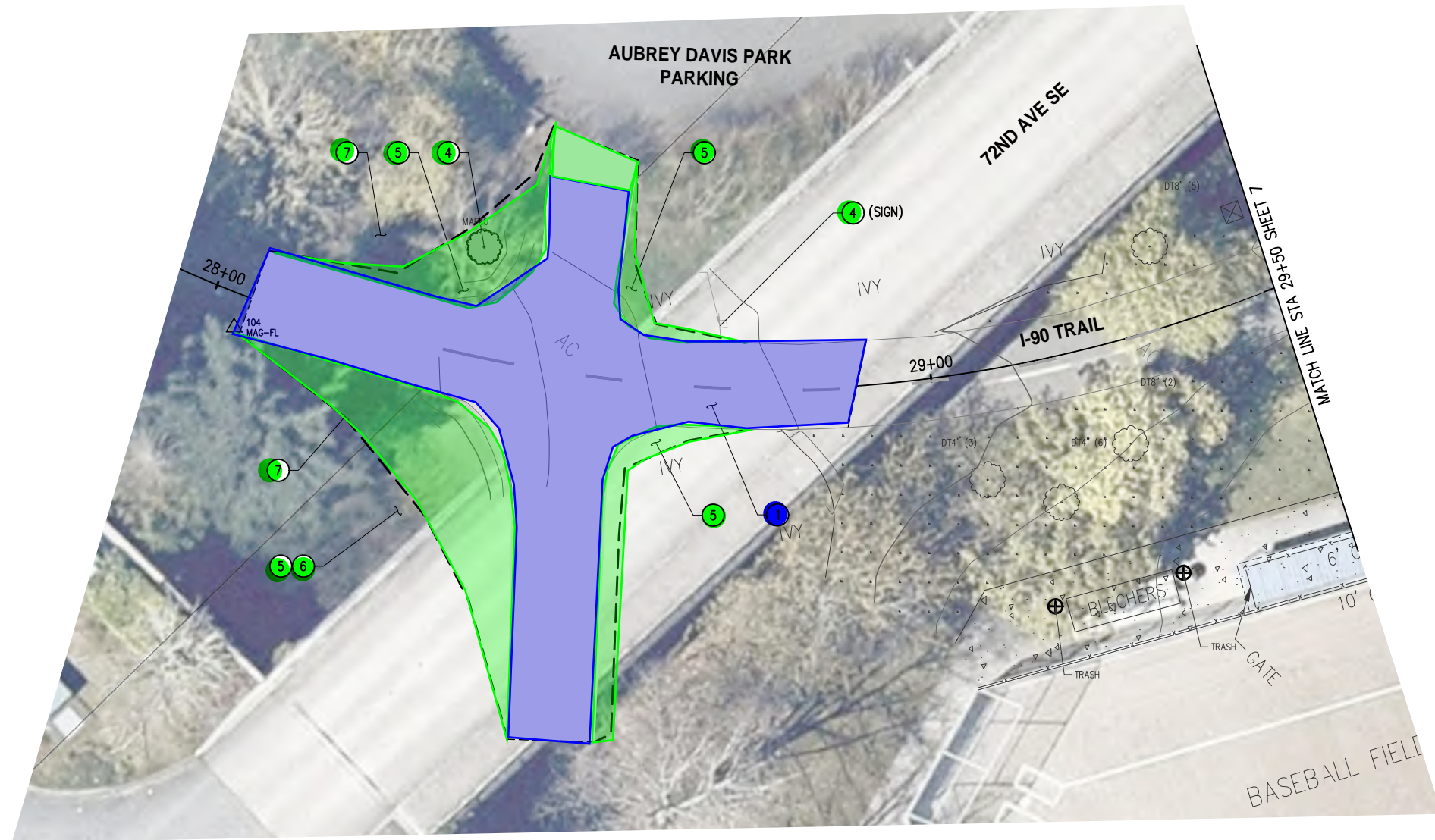
**30% REVIEW  
SUBMITTAL**



**CITY OF MERCER ISLAND  
AUBREY DAVIS PARK  
TRAIL SAFETY IMPROVEMENTS**

TESC AND SITE PREPARATION PLANS  
STA 11+50 TO STA 16+00

K:\PROJECTS\MERCER IS\21098-Aubrey Davis Park Improvements\DESIGN\Drawings\Contract\21098TESC-SP.dwg 5/10/2022 7:46 PM



**GENERAL NOTES**

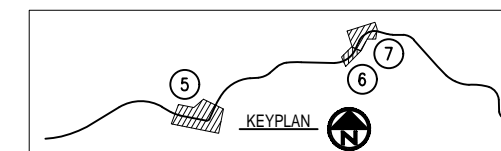
1. CONTRACTOR SHALL SEQUENCE REMOVAL OF EXISTING FEATURES WITH CONSTRUCTION OF NEW ROADWAY ELEMENTS TO MINIMIZE IMPACTS TO PROPERTY OWNERS, TRAFFIC FLOW, AND THE ENVIRONMENT.
2. CONTRACTOR SHALL PROTECT ALL ABOVE AND BELOW GROUND UTILITIES AND IMPROVEMENTS THAT ARE TO REMAIN.
3. CONTRACTOR SHALL PROTECT ALL PLANT MATERIAL OUTSIDE OF CLEARING LIMITS.
4. CONTRACTOR SHALL MAINTAIN ACCESS FOR ALL ADJACENT PROPERTY OWNERS AND PARK USERS.
5. CONTRACTOR SHALL FURNISH AND INSTALL INLET PROTECTION IN ALL EXISTING AND NEW CATCH BASINS. CONTRACTOR SHALL INSTALL OTHER EROSION CONTROL MEASURES TO MINIMIZE SEDIMENT MIGRATION INTO STREAMS AND STORM DRAINAGE SYSTEMS.

**CONSTRUCTION NOTES**

- ① SAWCUT AND REMOVE ASPHALT PAVEMENT.
- ② SAWCUT AND REMOVE CONCRETE PAVEMENT.
- ③ PRESERVE AND PROTECT.
- ④ REMOVE.
- ⑤ REMOVE GROUND COVER WITHIN CLEARING LIMITS AS NECESSARY TO INSTALL PROPOSED IMPROVEMENTS.
- ⑥ REMOVE SHRUB(S) AND BUSH(ES).
- ⑦ TRIM/PRUNE EXISTING TREE(S), BUSH(ES), AND SHRUB(S) PER COMI STD DETAIL UF-4 AS NECESSARY TO INSTALL PROPOSED IMPROVEMENTS.
- ⑧ POLE TO BE RELOCATED PRIOR TO OR DURING CONSTRUCTION. CITY TO COORDINATE WITH WSDOT.
- ⑨ SAWCUT AND REMOVE CEMENT CONCRETE CURB AND GUTTER.
- ⑩ REMOVE BOLLARDS.

**LEGEND**

- REMOVE CEMENT CONC PAVEMENT
- REMOVE ASPHALT PAVEMENT
- REMOVE CURB AND GUTTER
- REMOVE DECIDUOUS TREE
- SAWCUT
- HIGH VISIBILITY FENCE
- CLEARING LIMITS



NO.	DATE	BY	APPR.	REVISIONS

<b>Approved By</b>		21098TESC-SP.dwg FILENAME	
ENGINEERING MANAGER	DATE	DESIGNED BY	DATE
PROJECT MANAGER	DATE	DRAWN BY	DATE
PROJECT ENGINEER	DATE	CHECKED BY	DATE

**KPG**  
PSOMAS  
Seattle  
3131 Elliott Avenue, Suite 400  
Seattle, WA 98121 206.286.1640  
Tacoma | Wenatchee | KPG.com

**30% REVIEW  
SUBMITTAL**



**CITY OF MERCER ISLAND  
AUBREY DAVIS PARK  
TRAIL SAFETY IMPROVEMENTS**

TESC AND SITE PREPARATION PLANS  
STA 28+00 TO STA 29+50  
KPG PROJECT No. 21098 | SHT 6 OF 18

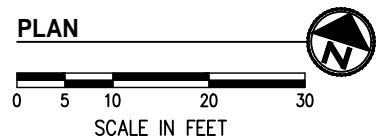
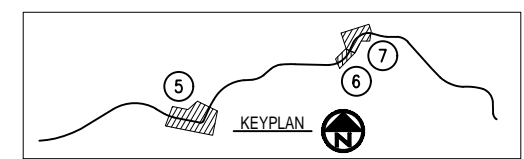
K:\PROJECTS\MERCER IS\21098-Aubrey Davis Park Improvements\DESIGN\Drawings\Contract\21098\TESC-SP.dwg 5/10/2022 7:46 PM



- GENERAL NOTES**
- CONTRACTOR SHALL SEQUENCE REMOVAL OF EXISTING FEATURES WITH CONSTRUCTION OF NEW ROADWAY ELEMENTS TO MINIMIZE IMPACTS TO PROPERTY OWNERS, TRAFFIC FLOW, AND THE ENVIRONMENT.
  - CONTRACTOR SHALL PROTECT ALL ABOVE AND BELOW GROUND UTILITIES AND IMPROVEMENTS THAT ARE TO REMAIN.
  - CONTRACTOR SHALL PROTECT ALL PLANT MATERIAL OUTSIDE OF CLEARING LIMITS.
  - CONTRACTOR SHALL MAINTAIN ACCESS FOR ALL ADJACENT PROPERTY OWNERS AND PARK USERS.
  - CONTRACTOR SHALL FURNISH AND INSTALL INLET PROTECTION IN ALL EXISTING AND NEW CATCH BASINS. CONTRACTOR SHALL INSTALL OTHER EROSION CONTROL MEASURES TO MINIMIZE SEDIMENT MIGRATION INTO STREAMS AND STORM DRAINAGE SYSTEMS.

- CONSTRUCTION NOTES**
- SAWCUT AND REMOVE ASPHALT PAVEMENT.
  - SAWCUT AND REMOVE CONCRETE PAVEMENT.
  - PRESERVE AND PROTECT.
  - REMOVE.
  - REMOVE GROUNDCOVER WITHIN CLEARING LIMITS AS NECESSARY TO INSTALL PROPOSED IMPROVEMENTS.
  - REMOVE SHRUB(S) AND BUSH(ES).
  - TRIM/PRUNE EXISTING TREE(S), BUSH(ES), AND SHRUB(S) PER COMI STD DETAIL UF-4 AS NECESSARY TO INSTALL PROPOSED IMPROVEMENTS.
  - POLE TO BE RELOCATED PRIOR TO OR DURING CONSTRUCTION. CITY TO COORDINATE WITH WSDOT.
  - SAWCUT AND REMOVE CEMENT CONCRETE CURB AND GUTTER.
  - REMOVE BOLLARDS.

- LEGEND**
- REMOVE CEMENT CONC PAVEMENT
  - REMOVE ASPHALT PAVEMENT
  - REMOVE CURB AND GUTTER
  - REMOVE DECIDUOUS TREE
  - SAWCUT
  - HIGH VISIBILITY FENCE
  - CLEARING LIMITS



NO.	DATE	BY	APPR.	REVISIONS

<b>Approved By</b>		21098TESC-SP.dwg FILENAME	
ENGINEERING MANAGER	DATE	DESIGNED BY	DATE
PROJECT MANAGER	DATE	DRAWN BY	DATE
PROJECT ENGINEER	DATE	CHECKED BY	DATE

**KPG**  
P S O M A S

Seattle  
3131 Elliott Avenue, Suite 400  
Seattle, WA 98121 206.286.1640  
Tacoma | Wenatchee | KPG.com

**30% REVIEW  
SUBMITTAL**

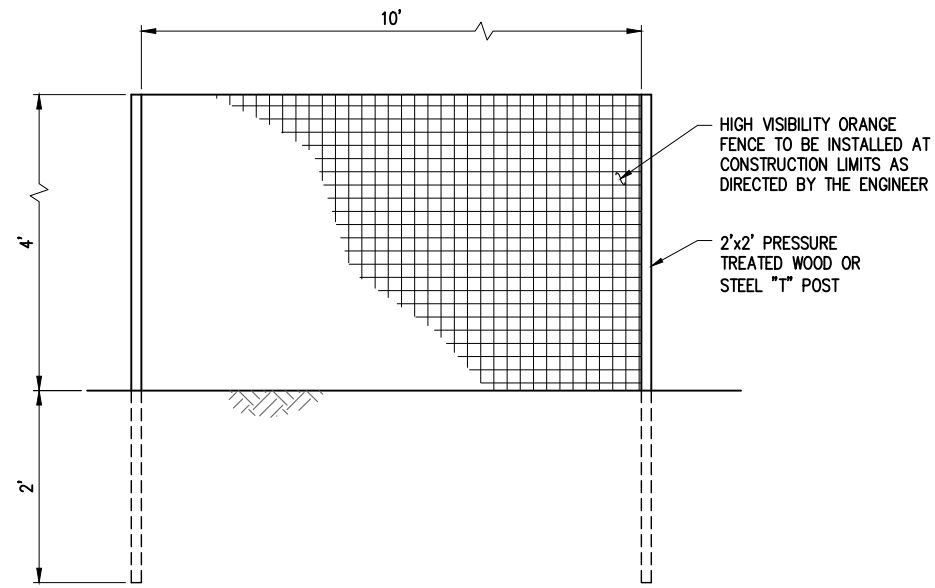


**CITY OF MERCER ISLAND  
AUBREY DAVIS PARK  
TRAIL SAFETY IMPROVEMENTS**

TESC AND SITE PREPARATION PLANS  
STA 29+50 TO STA 32+00

KPG PROJECT No. 21098 | SHT 7 OF 18

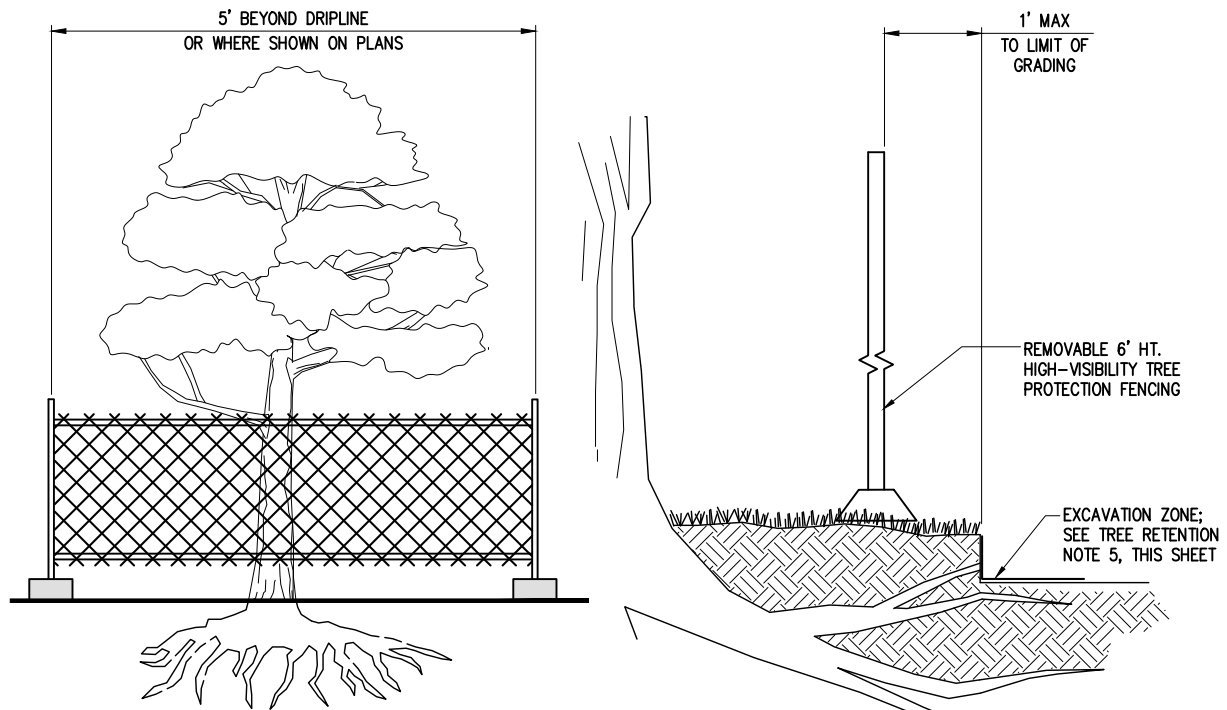
K:\PROJECTS\MERCER IS\21098-Aubrey Davis Park Improvements\DESIGN\Drawings\Contract\21098TESC-SP-DET.dwg 5/10/2022 7:47 PM



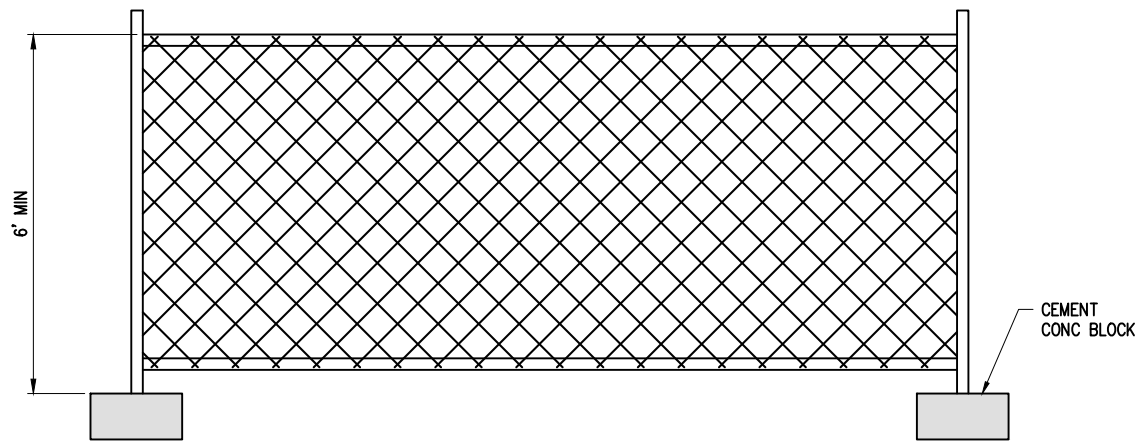
**ELEVATION**

**NOTE:**  
PLACE AT GRADING LIMITS AND AROUND TREES TO BE PROTECTED WHERE DIRECTED BY THE ENGINEER.

**HIGH VISIBILITY ORANGE FENCING**  
NTS



**TREE PROTECTION DETAIL**  
**TEMPORARY CHAIN LINK FENCE**  
NTS



- NOTES:**
- SIX FOOT HIGH TEMPORARY CHAIN LINK FENCE SHALL BE PLACED WHERE INDICATED ON PLANS. ACCESS GATES TO BE INSTALLED ONLY WHERE INDICATED ON PLANS. INSTALL FENCE POSTS USING CEMENT CONC. BLOCK FOOTINGS ONLY. AVOID DRIVING POSTS OR STAKES INTO EXISTING GROUND SURFACE.

**TEMPORARY CHAIN LINK FENCE**  
NTS

NO.	DATE	BY	APPR.	REVISIONS

<b>Approved By</b>		21098TESC-SP-DET.dwg	
ENGINEERING MANAGER	DATE	DESIGNED BY	DATE
PROJECT MANAGER	DATE	DRAWN BY	DATE
PROJECT ENGINEER	DATE	CHECKED BY	DATE

**KPG**  
PSOMAS  
Seattle  
3131 Elliott Avenue, Suite 400  
Seattle, WA 98121 206.286.1640  
Tacoma | Wenatchee | KPG.com

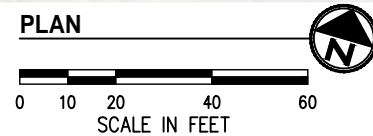
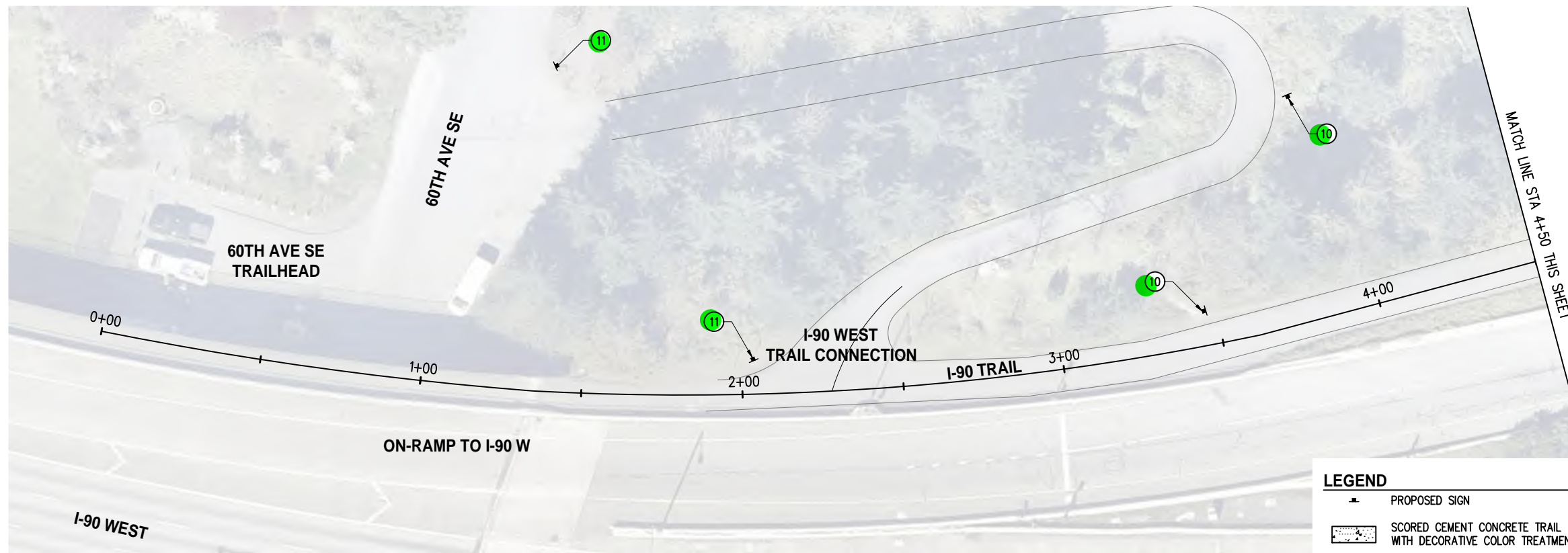
**30% REVIEW  
SUBMITTAL**



**CITY OF MERCER ISLAND  
AUBREY DAVIS PARK  
TRAIL SAFETY IMPROVEMENTS**

<b>TESC AND SITE PREPARATION DETAILS</b>	
KPG PROJECT No. 21098	SHT <u>8</u> OF <u>18</u>



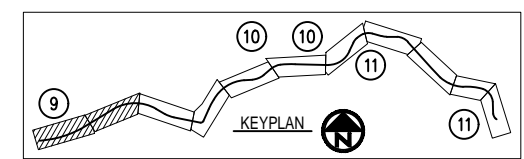
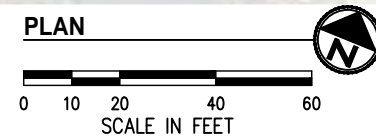
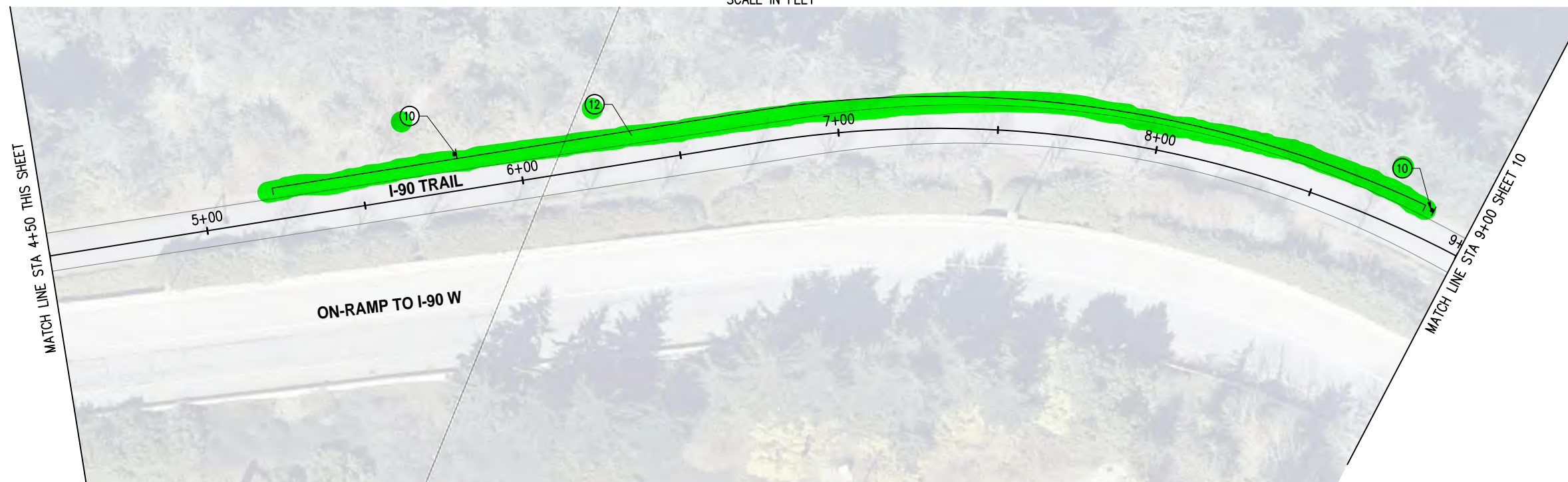


**LEGEND**

- PROPOSED SIGN
- SCORED CEMENT CONCRETE TRAIL WITH DECORATIVE COLOR TREATMENT
- HMA TRAIL OR PAVEMENT
- DETECTABLE WARNING SURFACE
- CEMENT CONCRETE TRAIL

- GENERAL NOTES**
- CONTRACTOR SHALL SEQUENCE REMOVAL OF EXISTING FEATURES WITH CONSTRUCTION OF NEW ROADWAY ELEMENTS TO MINIMIZE IMPACTS TO PROPERTY OWNERS, TRAIL USERS, TRAFFIC FLOW, AND THE ENVIRONMENT.
  - CONTRACTOR SHALL PROVIDE AND MAINTAIN TEMPORARY PEDESTRIAN ROUTE AROUND CONSTRUCTION ACTIVITY FOR THE DURATION OF CONSTRUCTION.

- CONSTRUCTION NOTES**
- MATCH EXISTING.
  - CONSTRUCT CEMENT CONC SIDEWALK. SEE TYPICAL SECTION, SHEET 15.
  - CONSTRUCT CEMENT CONC CURB AND GUTTER PER COMI STANDARD DETAILS ST-14.
  - INSTALL HMA CL 1/2" PG58H-22 FOR NEW PAVEMENT. SEE TYPICAL SECTIONS, SHEET 15.
  - INSTALL HMA CL 1/2" PG58H-22 FOR WALKWAY. SEE TYPICAL SECTIONS, SHEET 15.
  - INSTALL THERMOPLASTIC CROSSWALK PER DETAIL, SHEET 15.
  - INSTALL THERMOPLASTIC BAR PER DETAIL, SHEET 15.
  - INSTALL SCORED AND COLORED CEMENT CONCRETE FOR PLAZA. SEE SITE ELEMENT PLANS, SHEET 16-18.
  - INSTALL 4" WIDE, YELLOW, PAINT LINE.
  - INSTALL REGULATORY SIGN.
  - INSTALL WAYFINDING SIGN.
  - SHOULDER RESTORATION PER DETAIL, SHEET 15
  - LAWN RESTORATION.
  - INSTALL DETECTABLE WARNING SURFACE.
  - INSTALL CEMENT CONCRETE CURB RAMP, TYP, PERPENDICULAR A.
  - REMOVE BOLLARDS WITHIN PAVEMENT LIMITS.
  - INSTALL FENCING.



K:\PROJECTS\MERCER IS\21098-Aubrey Davis Park Improvements\DESIGN\Drawings\Contract\21098TRAIL.dwg 5/10/2022 7:48 PM

NO.	DATE	BY	APPR.	REVISIONS

Approved By		21098TRAIL.dwg FILENAME	
ENGINEERING MANAGER	DATE	DESIGNED BY	DATE
PROJECT MANAGER	DATE	DRAWN BY	DATE
PROJECT ENGINEER	DATE	CHECKED BY	DATE

**KPG**  
PSOMAS  
Seattle  
3131 Elliott Avenue, Suite 400  
Seattle, WA 98121 206.286.1640  
Tacoma | Wenatchee | KPG.com

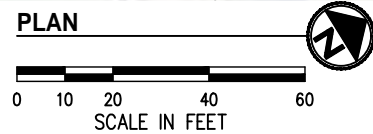
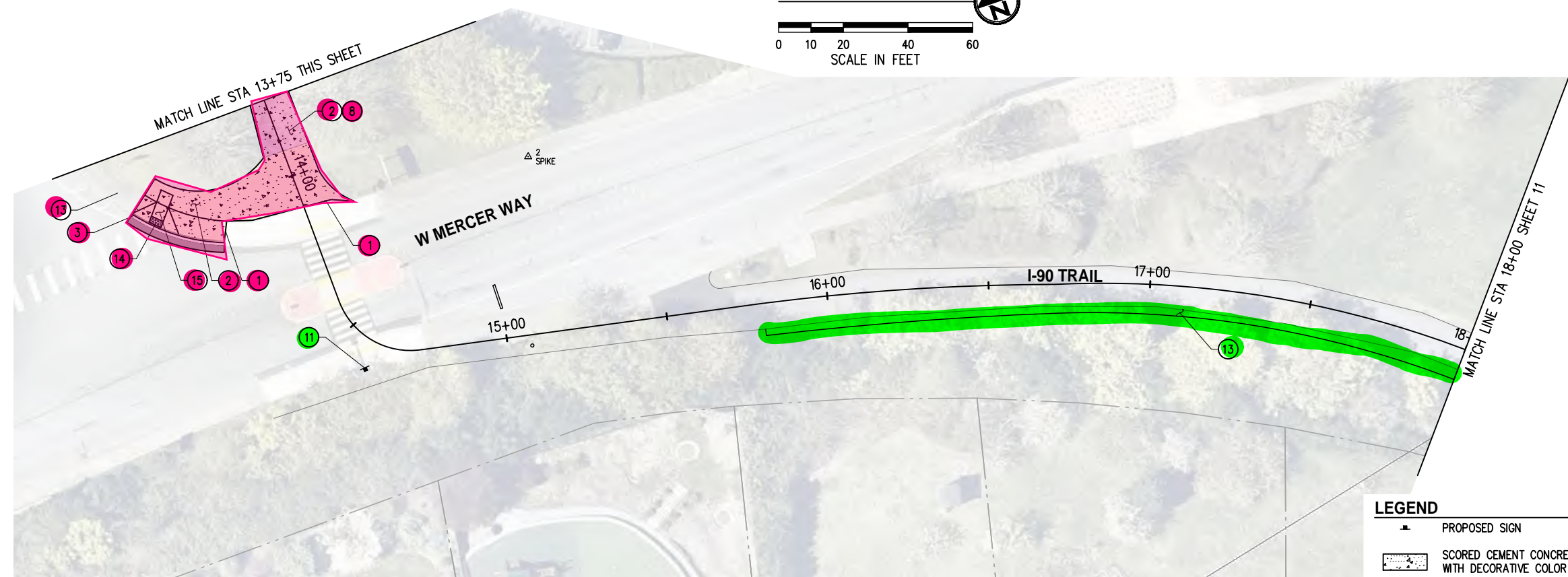
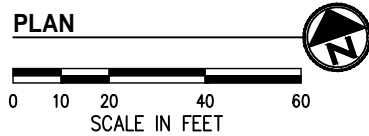
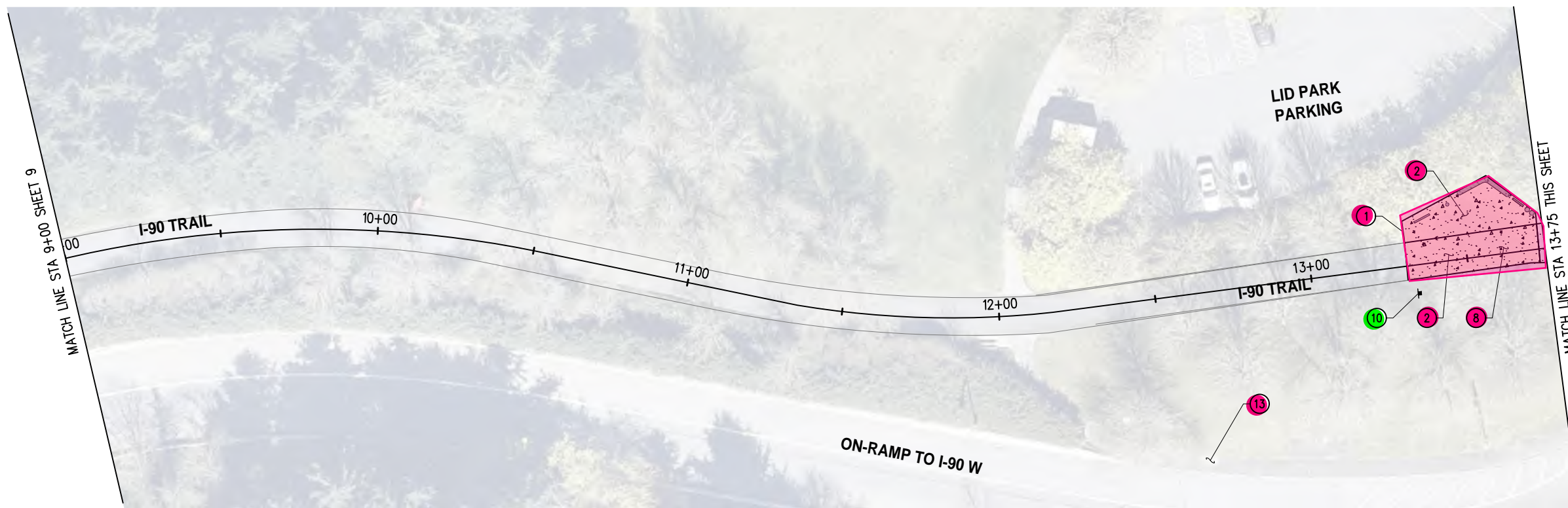
**30% REVIEW  
SUBMITTAL**



**CITY OF MERCER ISLAND  
AUBREY DAVIS PARK  
TRAIL SAFETY IMPROVEMENTS**

TRAIL IMPROVEMENT PLANS STA 0+00 TO STA 9+00	
KPG PROJECT No. 21098	SHT <u>9</u> OF <u>18</u>

K:\PROJECTS\MERCER IS\21098-Aubrey Davis Park Improvements\Drawings\Contract\21098TRAIL.dwg 5/10/2022 7:49 PM



**GENERAL NOTES**

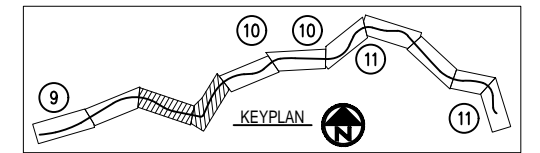
- CONTRACTOR SHALL SEQUENCE REMOVAL OF EXISTING FEATURES WITH CONSTRUCTION OF NEW ROADWAY ELEMENTS TO MINIMIZE IMPACTS TO PROPERTY OWNERS, TRAIL USERS, TRAFFIC FLOW, AND THE ENVIRONMENT.
- CONTRACTOR SHALL PROVIDE AND MAINTAIN TEMPORARY PEDESTRIAN ROUTE AROUND CONSTRUCTION ACTIVITY FOR THE DURATION OF CONSTRUCTION.

**CONSTRUCTION NOTES**

- MATCH EXISTING.
- CONSTRUCT CEMENT CONC SIDEWALK. SEE TYPICAL SECTION, SHEET 15.
- CONSTRUCT CEMENT CONC CURB AND GUTTER PER COMI STANDARD DETAILS ST-14.
- INSTALL HMA CL 1/2" PG58H-22 FOR NEW PAVEMENT. SEE TYPICAL SECTIONS, SHEET 15.
- INSTALL HMA CL 1/2" PG58H-22 FOR WALKWAY. SEE TYPICAL SECTIONS, SHEET 15.
- INSTALL THERMOPLASTIC CROSSWALK PER DETAIL, SHEET 15.
- INSTALL THERMOPLASTIC BAR PER DETAIL, SHEET 15.
- INSTALL SCORED AND COLORED CEMENT CONCRETE FOR PLAZA. SEE SITE ELEMENT PLANS, SHEET 16-18.
- INSTALL 4" WIDE, YELLOW, PAINT LINE.
- INSTALL REGULATORY SIGN.
- INSTALL WAYFINDING SIGN.
- SHOULDER RESTORATION PER DETAIL, SHEET 15
- LAWN RESTORATION.
- INSTALL DETECTABLE WARNING SURFACE.
- INSTALL CEMENT CONCRETE CURB RAMP, TYP, PERPENDICULAR A.
- REMOVE BOLLARDS WITHIN PAVEMENT LIMITS.
- INSTALL FENCING.

**LEGEND**

- PROPOSED SIGN
- SCORED CEMENT CONCRETE TRAIL WITH DECORATIVE COLOR TREATMENT
- HMA TRAIL OR PAVEMENT
- DETECTABLE WARNING SURFACE
- CEMENT CONCRETE TRAIL



NO.	DATE	BY	APPR.	REVISIONS

Approved By		21098TRAIL.dwg FILENAME	
ENGINEERING MANAGER	DATE	DESIGNED BY	DATE
PROJECT MANAGER	DATE	DRAWN BY	DATE
PROJECT ENGINEER	DATE	CHECKED BY	DATE

**KPG**  
PSOMAS  
Seattle  
3131 Elliott Avenue, Suite 400  
Seattle, WA 98121 206.286.1640  
Tacoma | Wenatchee | KPG.com

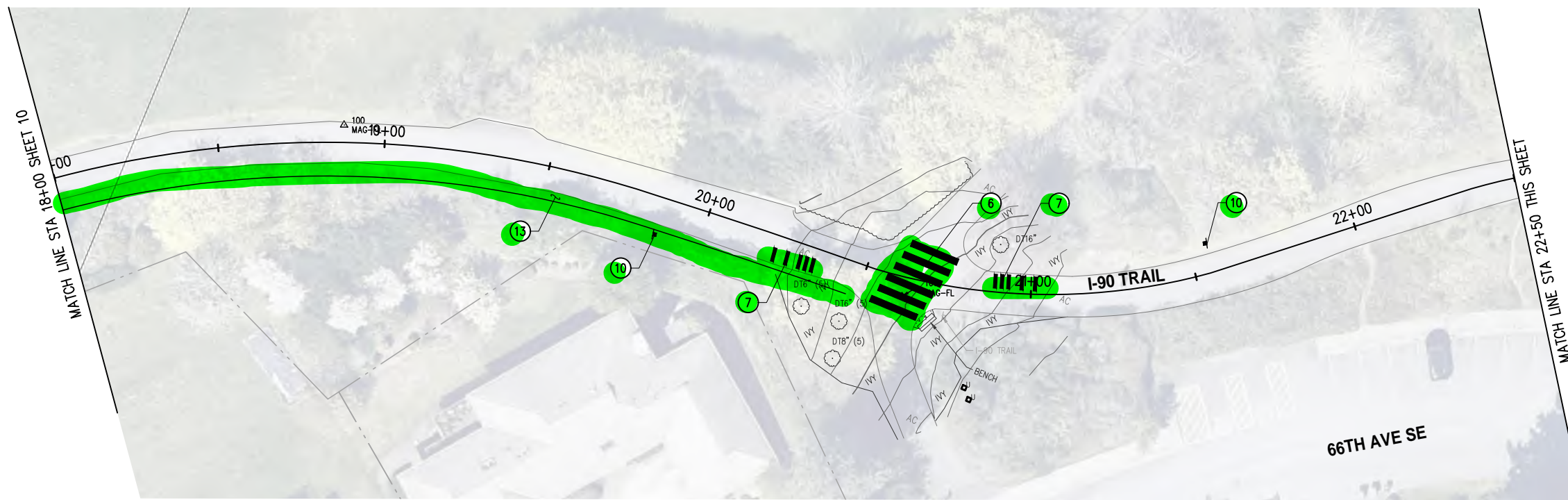
**30% REVIEW  
SUBMITTAL**



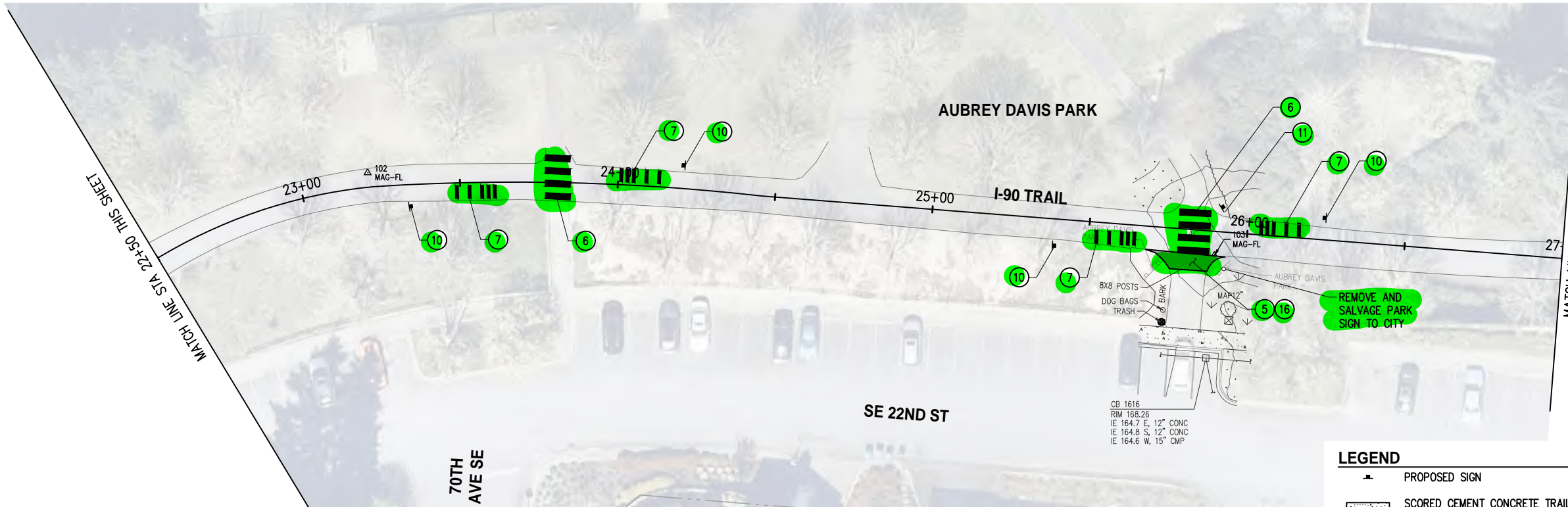
**CITY OF MERCER ISLAND  
AUBREY DAVIS PARK  
TRAIL SAFETY IMPROVEMENTS**

TRAIL IMPROVEMENT PLANS STA 9+00 TO STA 18+00	
KPG PROJECT No. 21098	SHT 10 OF 18

K:\PROJECTS\MERCER IS\21098-Aubrey Davis Park Improvements\DESIGN\Drawings\Contract\21098\TRAIL.dwg 5/10/2022 7:49 PM



**PLAN**  
SCALE IN FEET



**PLAN**  
SCALE IN FEET

**GENERAL NOTES**

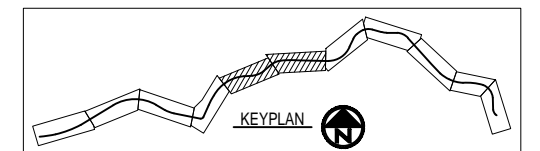
1. CONTRACTOR SHALL SEQUENCE REMOVAL OF EXISTING FEATURES WITH CONSTRUCTION OF NEW ROADWAY ELEMENTS TO MINIMIZE IMPACTS TO PROPERTY OWNERS, TRAIL USERS, TRAFFIC FLOW, AND THE ENVIRONMENT.
2. CONTRACTOR SHALL PROVIDE AND MAINTAIN TEMPORARY PEDESTRIAN ROUTE AROUND CONSTRUCTION ACTIVITY FOR THE DURATION OF CONSTRUCTION.

**CONSTRUCTION NOTES**

- 1 MATCH EXISTING.
- 2 CONSTRUCT CEMENT CONC SIDEWALK. SEE TYPICAL SECTION, SHEET 15.
- 3 CONSTRUCT CEMENT CONC CURB AND GUTTER PER COMI STANDARD DETAILS ST-14.
- 4 INSTALL HMA CL 1/2" PG58H-22 FOR NEW PAVEMENT. SEE TYPICAL SECTIONS, SHEET 15.
- 5 INSTALL HMA CL 1/2" PG58H-22 FOR WALKWAY. SEE TYPICAL SECTIONS, SHEET 15.
- 6 INSTALL THERMOPLASTIC CROSSWALK PER DETAIL, SHEET 15.
- 7 INSTALL THERMOPLASTIC BAR PER DETAIL, SHEET 15.
- 8 INSTALL SCORED AND COLORED CEMENT CONCRETE FOR PLAZA. SEE SITE ELEMENT PLANS, SHEET 16-18.
- 9 INSTALL 4" WIDE, YELLOW, PAINT LINE.
- 10 INSTALL REGULATORY SIGN.
- 11 INSTALL WAYFINDING SIGN.
- 12 SHOULDER RESTORATION PER DETAIL, SHEET 15
- 13 LAWN RESTORATION.
- 14 INSTALL DETECTABLE WARNING SURFACE.
- 15 INSTALL CEMENT CONCRETE CURB RAMP, TYP, PERPENDICULAR A.
- 16 REMOVE BOLLARDS WITHIN PAVEMENT LIMITS.
- 17 INSTALL FENCING.

**LEGEND**

- PROPOSED SIGN
- SCORED CEMENT CONCRETE TRAIL WITH DECORATIVE COLOR TREATMENT
- HMA TRAIL OR PAVEMENT
- DETECTABLE WARNING SURFACE
- CEMENT CONCRETE TRAIL



NO.	DATE	BY	APPR.	REVISIONS

<b>Approved By</b>		21098TRAIL.dwg FILENAME	
ENGINEERING MANAGER	DATE	DESIGNED BY	DATE
PROJECT MANAGER	DATE	DRAWN BY	DATE
PROJECT ENGINEER	DATE	CHECKED BY	DATE

**KPG**  
PSOMAS  
Seattle  
3131 Elliott Avenue, Suite 400  
Seattle, WA 98121 206.286.1640  
Tacoma | Wenatchee | KPG.com

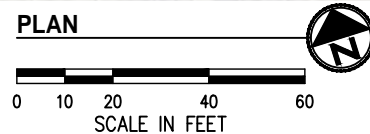
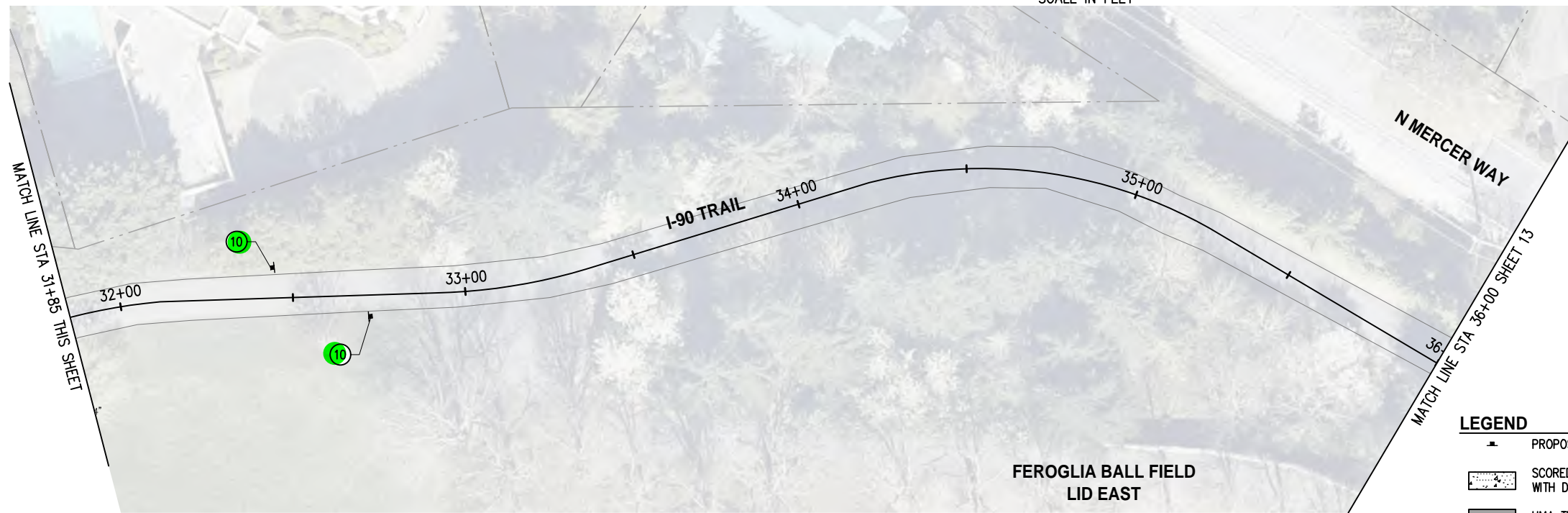
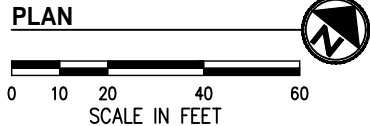
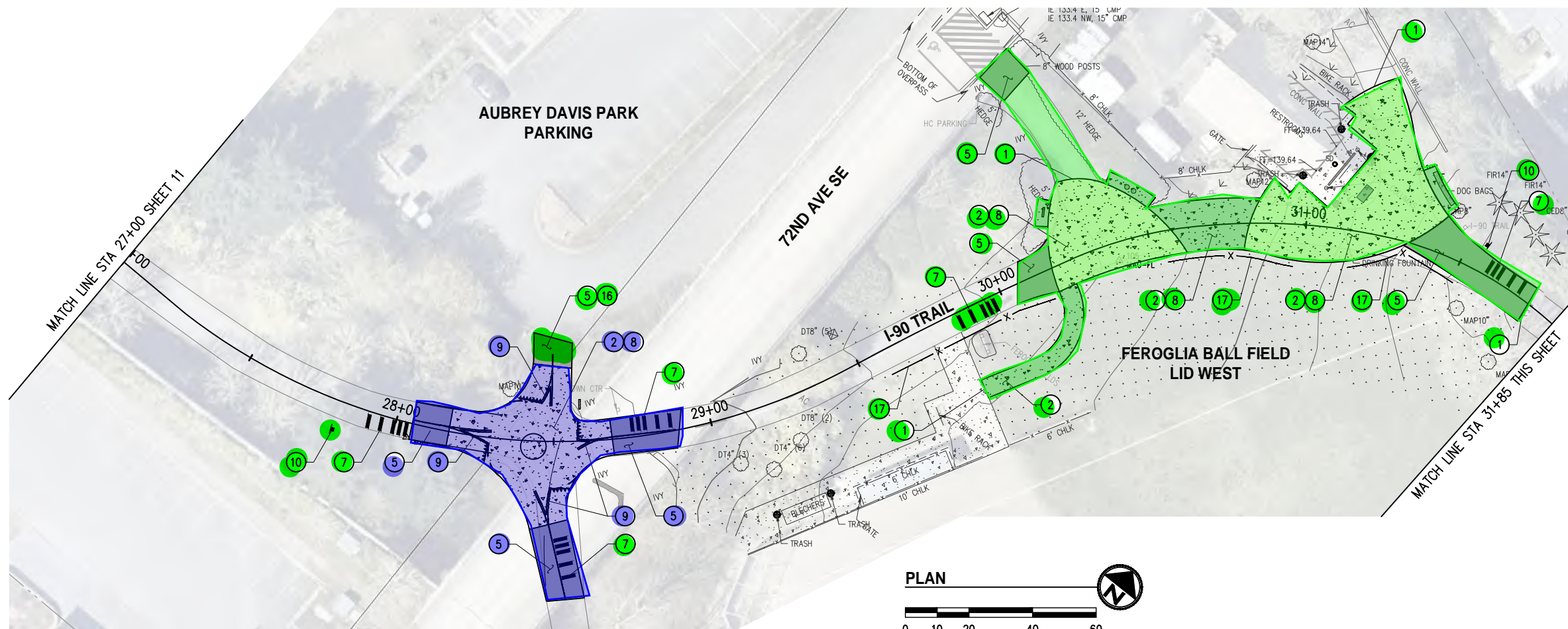
**30% REVIEW  
SUBMITTAL**



**CITY OF MERCER ISLAND  
AUBREY DAVIS PARK  
TRAIL SAFETY IMPROVEMENTS**

TRAIL IMPROVEMENT PLANS  
STA 18+00 TO STA 27+00  
KPG PROJECT No. 21098 | SHT 11 OF 18

K:\PROJECTS\MERCER IS\21098-Aubrey Davis Park Improvements\DESIGN\Drawings\Contract\21098TRAIL.dwg 5/10/2022 7:49 PM



**GENERAL NOTES**

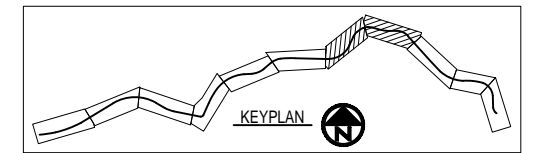
- CONTRACTOR SHALL SEQUENCE REMOVAL OF EXISTING FEATURES WITH CONSTRUCTION OF NEW ROADWAY ELEMENTS TO MINIMIZE IMPACTS TO PROPERTY OWNERS, TRAIL USERS, TRAFFIC FLOW, AND THE ENVIRONMENT.
- CONTRACTOR SHALL PROVIDE AND MAINTAIN TEMPORARY PEDESTRIAN ROUTE AROUND CONSTRUCTION ACTIVITY FOR THE DURATION OF CONSTRUCTION.

**CONSTRUCTION NOTES**

- MATCH EXISTING.
- CONSTRUCT CEMENT CONC SIDEWALK. SEE TYPICAL SECTION, SHEET 15.
- CONSTRUCT CEMENT CONC CURB AND GUTTER PER COMI STANDARD DETAILS ST-14.
- INSTALL HMA CL 1/2" PG58H-22 FOR NEW PAVEMENT. SEE TYPICAL SECTIONS, SHEET 15.
- INSTALL HMA CL 1/2" PG58H-22 FOR WALKWAY. SEE TYPICAL SECTIONS, SHEET 15.
- INSTALL THERMOPLASTIC CROSSWALK PER DETAIL, SHEET 15.
- INSTALL THERMOPLASTIC BAR PER DETAIL, SHEET 15.
- INSTALL SCORED AND COLORED CEMENT CONCRETE FOR PLAZA. SEE SITE ELEMENT PLANS, SHEET 16-18.
- INSTALL 4" WIDE, YELLOW, PAINT LINE.
- INSTALL REGULATORY SIGN.
- INSTALL WAYFINDING SIGN.
- SHOULDER RESTORATION PER DETAIL, SHEET 15
- LAWN RESTORATION.
- INSTALL DETECTABLE WARNING SURFACE.
- INSTALL CEMENT CONCRETE CURB RAMP, TYP, PERPENDICULAR A.
- REMOVE BOLLARDS WITHIN PAVEMENT LIMITS.
- INSTALL FENCING.

**LEGEND**

- PROPOSED SIGN
- SCORED CEMENT CONCRETE TRAIL WITH DECORATIVE COLOR TREATMENT
- HMA TRAIL OR PAVEMENT
- DETECTABLE WARNING SURFACE
- CEMENT CONCRETE TRAIL



NO.	DATE	BY	APPR.	REVISIONS

Approved By		21098TRAIL.dwg FILENAME	
ENGINEERING MANAGER	DATE	DESIGNED BY	DATE
PROJECT MANAGER	DATE	DRAWN BY	DATE
PROJECT ENGINEER	DATE	CHECKED BY	DATE

**KPG**  
PSOMAS  
Seattle  
3131 Elliott Avenue, Suite 400  
Seattle, WA 98121 206.286.1640  
Tacoma | Wenatchee | KPG.com

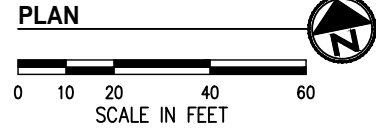
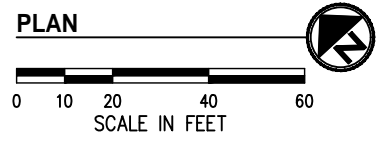
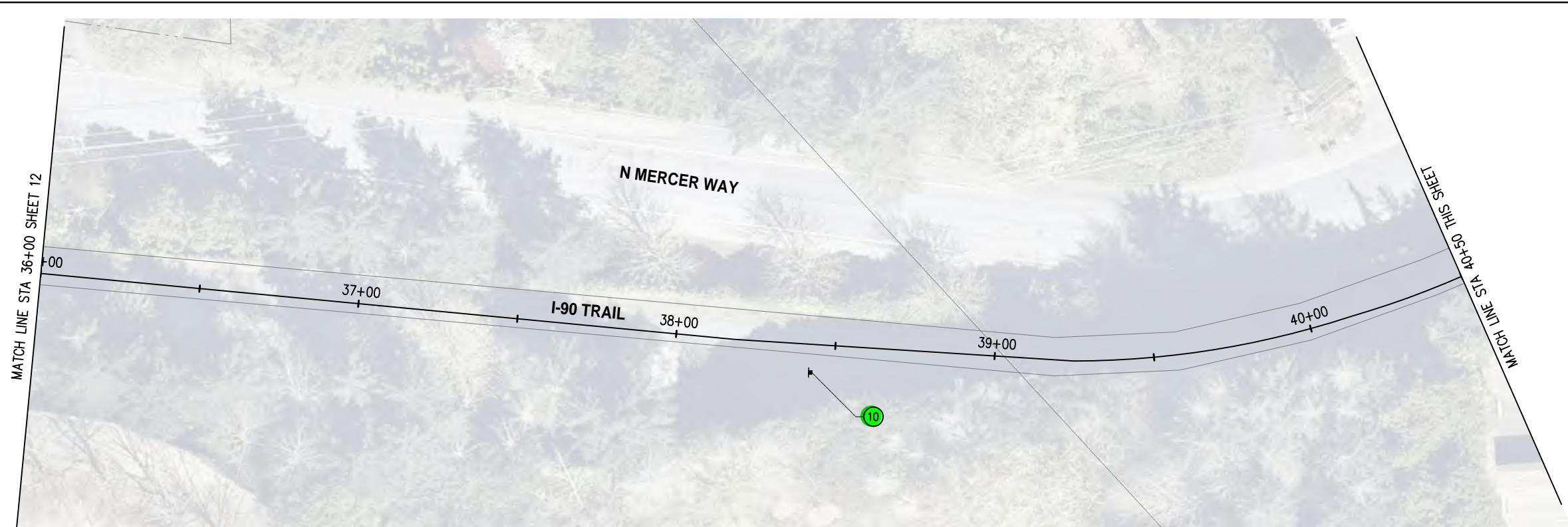
**30% REVIEW  
SUBMITTAL**







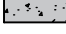
**CITY OF MERCER ISLAND  
AUBREY DAVIS PARK  
TRAIL SAFETY IMPROVEMENTS**

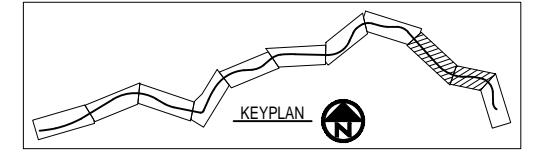
TRAIL IMPROVEMENT PLANS STA 27+00 TO STA 36+00	
KPG PROJECT No. 21098	SHT 12 OF 18

K:\PROJECTS\MERCER IS\21098-Aubrey Davis Park Improvements\DESIGN\Drawings\Contract\21098\TRAIL.dwg 5/10/2022 7:49 PM



**LEGEND**

-  PROPOSED SIGN
-  SCORED CEMENT CONCRETE TRAIL WITH DECORATIVE COLOR TREATMENT
-  HMA TRAIL OR PAVEMENT
-  DETECTABLE WARNING SURFACE
-  CEMENT CONCRETE TRAIL



**GENERAL NOTES**

1. CONTRACTOR SHALL SEQUENCE REMOVAL OF EXISTING FEATURES WITH CONSTRUCTION OF NEW ROADWAY ELEMENTS TO MINIMIZE IMPACTS TO PROPERTY OWNERS, TRAIL USERS, TRAFFIC FLOW, AND THE ENVIRONMENT.
2. CONTRACTOR SHALL PROVIDE AND MAINTAIN TEMPORARY PEDESTRIAN ROUTE AROUND CONSTRUCTION ACTIVITY FOR THE DURATION OF CONSTRUCTION.

**CONSTRUCTION NOTES**

- 1 MATCH EXISTING.
- 2 CONSTRUCT CEMENT CONC SIDEWALK. SEE TYPICAL SECTION, SHEET 15.
- 3 CONSTRUCT CEMENT CONC CURB AND GUTTER PER COMI STANDARD DETAILS ST-14.
- 4 INSTALL HMA CL 1/2" PG58H-22 FOR NEW PAVEMENT. SEE TYPICAL SECTIONS, SHEET 15.
- 5 INSTALL HMA CL 1/2" PG58H-22 FOR WALKWAY. SEE TYPICAL SECTIONS, SHEET 15.
- 6 INSTALL THERMOPLASTIC CROSSWALK PER DETAIL, SHEET 15.
- 7 INSTALL THERMOPLASTIC BAR PER DETAIL, SHEET 15.
- 8 INSTALL SCORED AND COLORED CEMENT CONCRETE FOR PLAZA. SEE SITE ELEMENT PLANS, SHEET 16-18.
- 9 INSTALL 4" WIDE, YELLOW, PAINT LINE.
- 10 INSTALL REGULATORY SIGN.
- 11 INSTALL WAYFINDING SIGN.
- 12 SHOULDER RESTORATION PER DETAIL, SHEET 15
- 13 LAWN RESTORATION.
- 14 INSTALL DETECTABLE WARNING SURFACE.
- 15 INSTALL CEMENT CONCRETE CURB RAMP, TYP, PERPENDICULAR A.
- 16 REMOVE BOLLARDS WITHIN PAVEMENT LIMITS.
- 17 INSTALL FENCING.

NO.	DATE	BY	APPR.	REVISIONS

Approved By		21098TRAIL.dwg	
ENGINEERING MANAGER	DATE	DESIGNED BY	DATE
PROJECT MANAGER	DATE	DRAWN BY	DATE
PROJECT ENGINEER	DATE	CHECKED BY	DATE

**KPG**  
PSOMAS  
Seattle  
3131 Elliott Avenue, Suite 400  
Seattle, WA 98121 206.286.1640  
Tacoma | Wenatchee | KPG.com

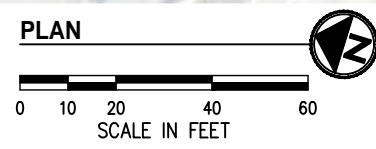
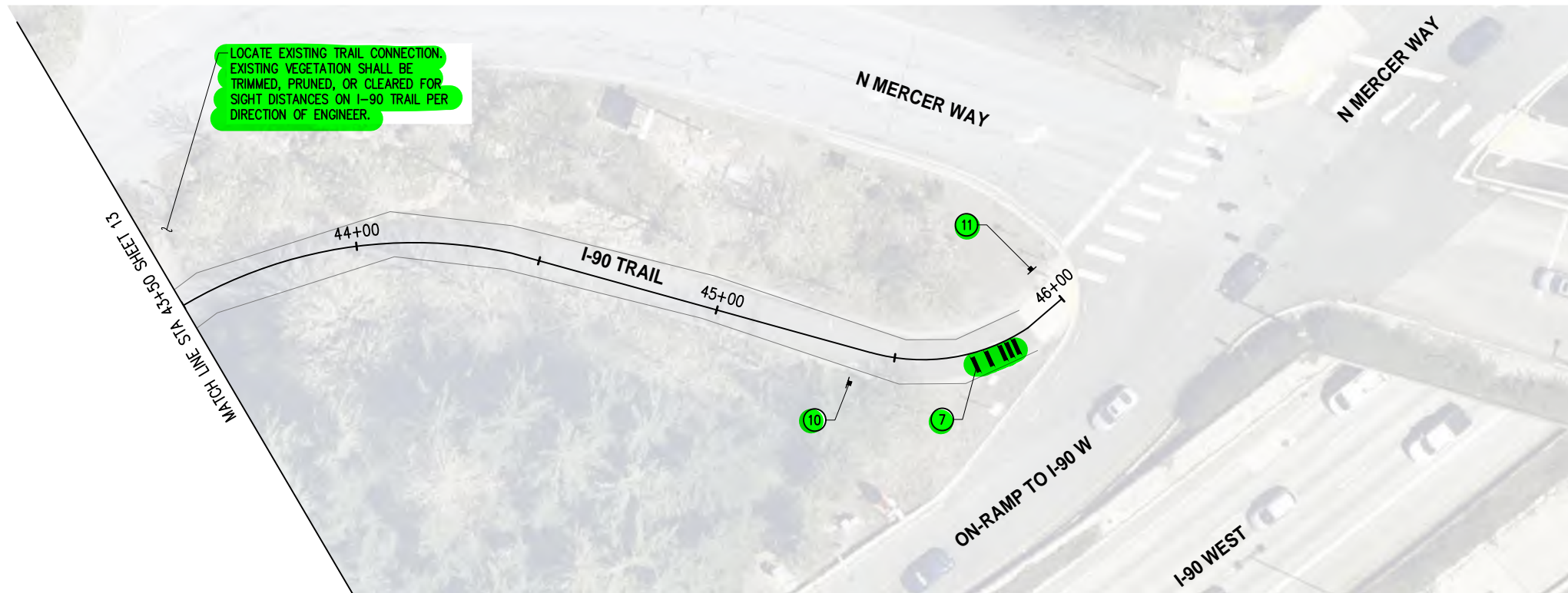
**30% REVIEW  
SUBMITTAL**



**CITY OF MERCER ISLAND  
AUBREY DAVIS PARK  
TRAIL SAFETY IMPROVEMENTS**

TRAIL IMPROVEMENT PLANS  
STA 36+00 TO STA 43+50  
KPG PROJECT No. 21098 SHT 13 OF 18

K:\PROJECTS\MERCER IS\21098-Aubrey Davis Park Improvements\DESIGN\Drawings\Contract\21098TRAIL.dwg 5/10/2022 7:50 PM



**GENERAL NOTES**

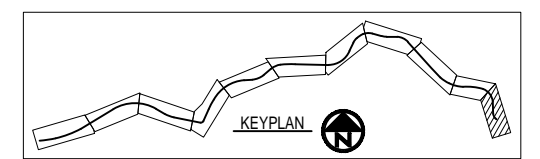
1. CONTRACTOR SHALL SEQUENCE REMOVAL OF EXISTING FEATURES WITH CONSTRUCTION OF NEW ROADWAY ELEMENTS TO MINIMIZE IMPACTS TO PROPERTY OWNERS, TRAIL USERS, TRAFFIC FLOW, AND THE ENVIRONMENT.
2. CONTRACTOR SHALL PROVIDE AND MAINTAIN TEMPORARY PEDESTRIAN ROUTE AROUND CONSTRUCTION ACTIVITY FOR THE DURATION OF CONSTRUCTION.

**CONSTRUCTION NOTES**

- 1 MATCH EXISTING.
- 2 CONSTRUCT CEMENT CONC SIDEWALK. SEE TYPICAL SECTION, SHEET 15.
- 3 CONSTRUCT CEMENT CONC CURB AND GUTTER PER COMI STANDARD DETAILS ST-14.
- 4 INSTALL HMA CL 1/2" PG58H-22 FOR NEW PAVEMENT. SEE TYPICAL SECTIONS, SHEET 15.
- 5 INSTALL HMA CL 1/2" PG58H-22 FOR WALKWAY. SEE TYPICAL SECTIONS, SHEET 15.
- 6 INSTALL THERMOPLASTIC CROSSWALK PER DETAIL, SHEET 15.
- 7 INSTALL THERMOPLASTIC BAR PER DETAIL, SHEET 15.
- 8 INSTALL SCORED AND COLORED CEMENT CONCRETE FOR PLAZA. SEE SITE ELEMENT PLANS, SHEET 16-18.
- 9 INSTALL 4" WIDE, YELLOW, PAINT LINE.
- 10 INSTALL REGULATORY SIGN.
- 11 INSTALL WAYFINDING SIGN.
- 12 SHOULDER RESTORATION PER DETAIL, SHEET 15
- 13 LAWN RESTORATION.
- 14 INSTALL DETECTABLE WARNING SURFACE.
- 15 INSTALL CEMENT CONCRETE CURB RAMP, TYP, PERPENDICULAR A.
- 16 REMOVE BOLLARDS WITHIN PAVEMENT LIMITS.
- 17 INSTALL FENCING.

**LEGEND**

- PROPOSED SIGN
- SCORED CEMENT CONCRETE TRAIL WITH DECORATIVE COLOR TREATMENT
- HMA TRAIL OR PAVEMENT
- DETECTABLE WARNING SURFACE
- CEMENT CONCRETE TRAIL



NO.	DATE	BY	APPR.	REVISIONS

<b>Approved By</b>		21098TRAIL.dwg FILENAME	
ENGINEERING MANAGER	DATE	DESIGNED BY	DATE
PROJECT MANAGER	DATE	DRAWN BY	DATE
PROJECT ENGINEER	DATE	CHECKED BY	DATE

**KPG**  
PSOMAS  
Seattle  
3131 Elliott Avenue, Suite 400  
Seattle, WA 98121 206.286.1640  
Tacoma | Wenatchee | KPG.com

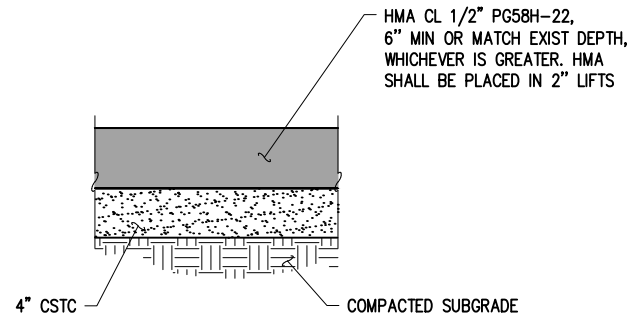
**30% REVIEW  
SUBMITTAL**



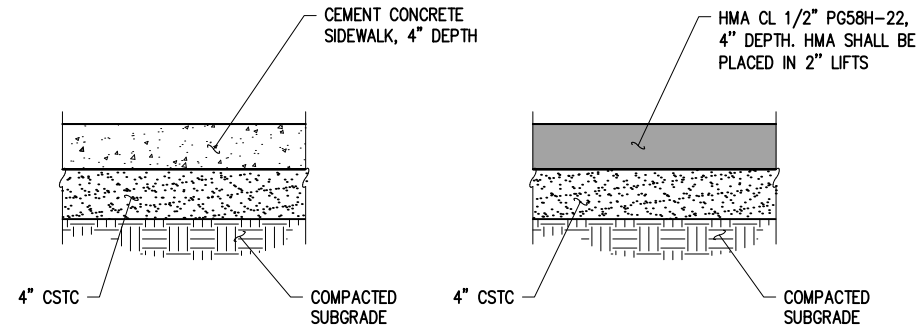
**CITY OF MERCER ISLAND  
AUBREY DAVIS PARK  
TRAIL SAFETY IMPROVEMENTS**

TRAIL IMPROVEMENT PLANS  
STA 43+50 TO STA 46+00

K:\PROJECTS\MERCER IS\21098-Aubrey Davis Park Improvements\DESIGN\Drawings\Contract\21098\TRAIL-DET.dwg 5/10/2022 7:50 PM



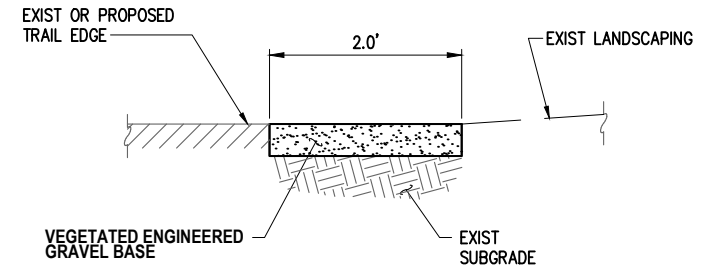
**HMA ROADWAY PAVEMENT SECTIONS**  
NTS



**CEMENT CONCRETE TRAIL SECTION**  
FOR PLAZA AND TRAIL

**HMA TRAIL SECTION**

**TYPICAL TRAIL SECTIONS**  
NTS



INSTALL WHERE SHOWN ON PLANS  
**SHOULDER SECTION**  
NTS

**TYPICAL SECTION GENERAL NOTES**

1. SIDEWALKS SHALL PROVIDE A MINIMUM OF 5.0' CLEAR PEDESTRIAN WALKING ZONE.
2. SUBGRADE PREPARATION SHALL BE IN ACCORDANCE WITH SECTION 2-06 OF THE STANDARD SPECIFICATIONS.
3. ADDITIONAL FILL MATERIAL REQUIRED FOR CONSTRUCTION SHALL BE APPROVED CRUSHED ROCK WHEN REQUIRED BY ENGINEER. FILL MATERIAL SHALL BE COMPACTED TO 95% MODIFIED PROCTOR DENSITY.
4. EMBANKMENTS SHALL BE CONSTRUCTED PER SECTION 2-03 OF THE STANDARD SPECIFICATIONS.
5. IF UNSUITABLE FOUNDATION IS ENCOUNTERED, THE CONTRACTOR SHALL CAREFULLY OVER EXCAVATE TO A MAXIMUM DEPTH OF 1.0' AND REPLACE WITH CRUSHED ROCK AS DIRECTED BY ENGINEER.
6. WHERE EXISTING EDGE OF PAVEMENT IS LESS THAN 2.0' FROM PROPOSED GUTTER PAN, CONTRACTOR SHALL SAWCUT AND REMOVE PAVEMENT AS REQUIRED TO PROVIDE 2.0' MINIMUM CLEARANCE.
7. MAXIMUM COMPACTED HMA LIFT THICKNESS SHALL NOT EXCEED 0.17'.
8. ACCESS TO ADJACENT PROPERTY MUST BE MAINTAINED AT ALL TIMES UNLESS PRIOR ARRANGEMENTS HAVE BEEN MADE AND APPROVED BY ENGINEER.
9. ALL PAVEMENT SHALL BE CUT BY SAW CUTTING FULL DEPTH IN A NEAT VERTICAL LINE PRIOR TO REMOVING. ANY DAMAGE TO ADJACENT PAVEMENT SHALL BE REPAIRED BY THE CONTRACTOR AT NO EXPENSE TO THE OWNER.

NO.	DATE	BY	APPR.	REVISIONS

<b>Approved By</b>		21098TRAIL-DET.dwg FILENAME	
ENGINEERING MANAGER	DATE	DESIGNED BY	DATE
PROJECT MANAGER	DATE	DRAWN BY	DATE
PROJECT ENGINEER	DATE	CHECKED BY	DATE

**KPG**  
P S O M A S  
Seattle  
3131 Elliott Avenue, Suite 400  
Seattle, WA 98121 206.286.1640  
Tacoma | Wenatchee | KPG.com

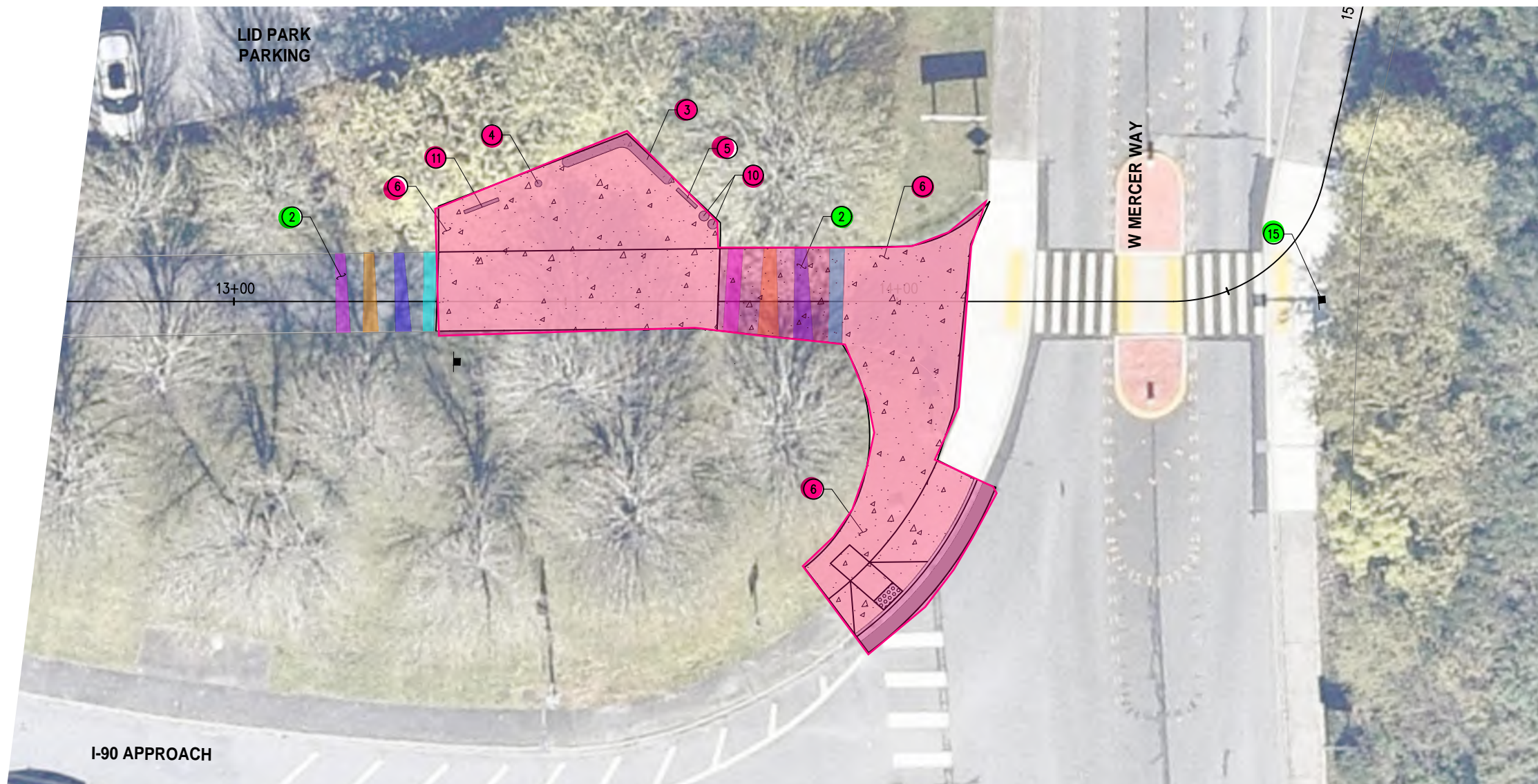
**30% REVIEW  
SUBMITTAL**



**CITY OF MERCER ISLAND  
AUBREY DAVIS PARK  
TRAIL SAFETY IMPROVEMENTS**

TRAIL IMPROVEMENT DETAILS	
KPG PROJECT No. 21098	SHT <u>15</u> OF <u>18</u>

K:\PROJECTS\MERCER IS\21098-Aubrey Davis Park Improvements\DESIGN\Drawings\Contract\21098SITE.dwg 5/10/2022 7:52 PM

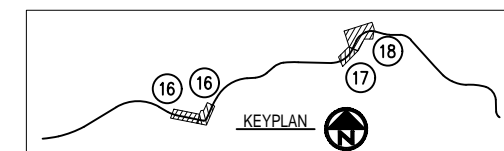
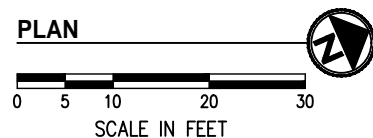
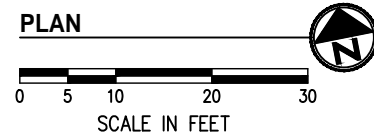


**GENERAL NOTES**

1. STATION/OFFSET SHALL BE TAKEN FROM CENTER OF FEATURE UNLESS OTHERWISE NOTED.

**CONSTRUCTION NOTES**

- 1 CEMENT CONCRETE TRAIL. SEE DETAIL, SHEET 19.
- 2 COLORED SURFACE PAVEMENT TREATMENT. SEE DETAIL, SHEET 19.
- 3 SEATWALL. SEE DETAIL, SHEET 19.
- 4 BICYCLE MAINTENANCE STATION. SEE DETAIL, SHEET 19.
- 5 INFORMATION KIOSK. SEE DETAIL, SHEET 19.
- 6 SCORED CEMENT CONCRETE WITH DECORATIVE COLOR TREATMENT. SEE DETAIL, SHEET 19.
- 10 WASTE AND RECYCLE RECEPTACLE. SEE DETAIL SHEET 19.
- 11 BICYCLE RACK. SEE DETAIL, SHEET 19.
- 15 STANDARD WAYFINDING SIGN. SEE DETAIL, SHEET 19.



NO.	DATE	BY	APPR.	REVISIONS

Approved By		21098SITE.dwg FILENAME	
ENGINEERING MANAGER	DATE	DESIGNED BY	DATE
PROJECT MANAGER	DATE	DRAWN BY	DATE
PROJECT ENGINEER	DATE	CHECKED BY	DATE

**KPG**  
PSOMAS  
Seattle  
3131 Elliott Avenue, Suite 400  
Seattle, WA 98121 206.286.1640  
Tacoma | Wenatchee | KPG.com

**30% REVIEW  
SUBMITTAL**

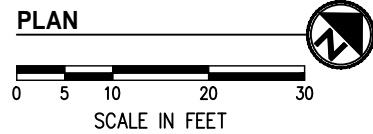
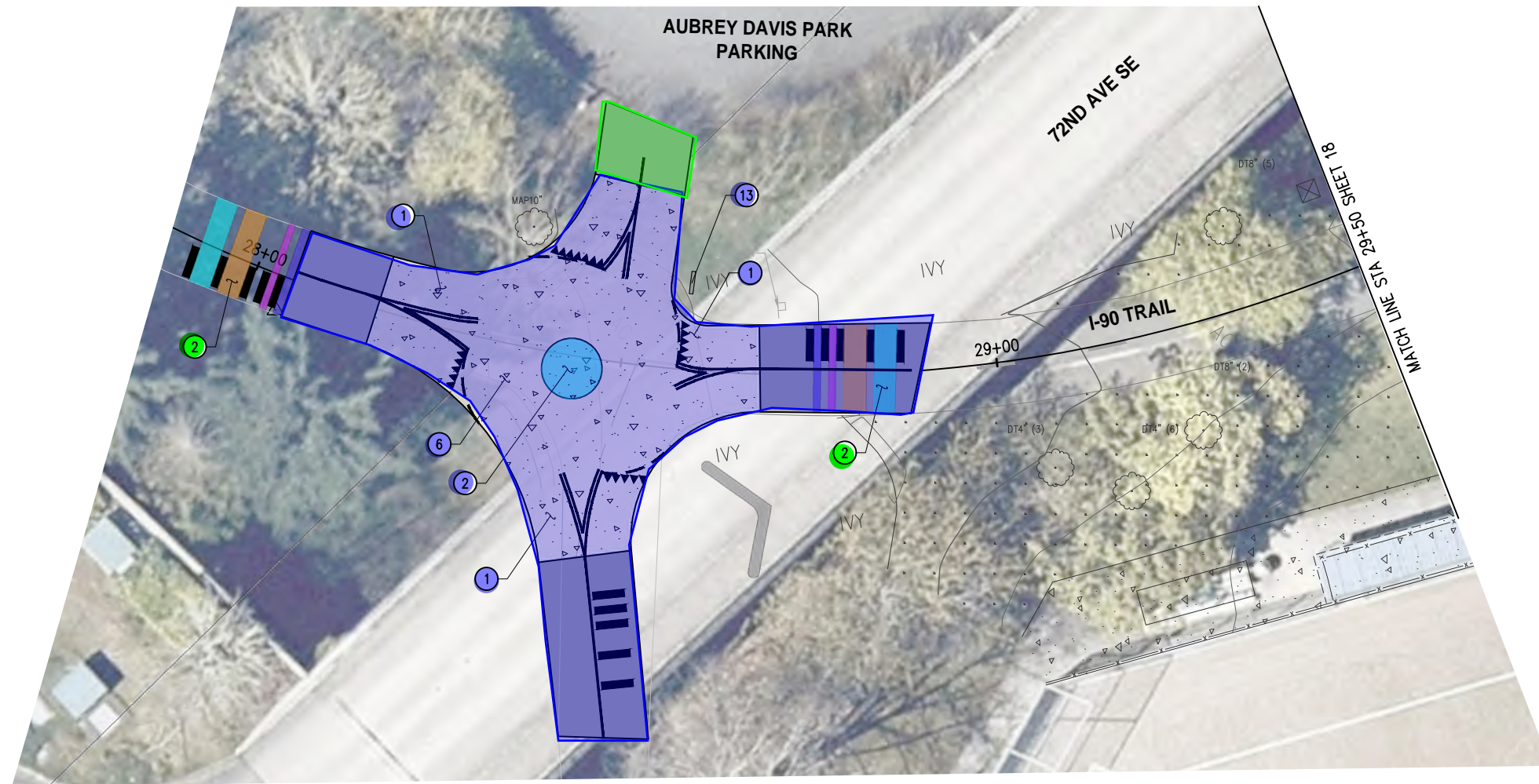


**CITY OF MERCER ISLAND  
AUBREY DAVIS PARK  
TRAIL SAFETY IMPROVEMENTS**

SITE ELEMENT PLANS  
STA 11+50 TO STA 16+00



K:\PROJECTS\MERCER IS\21098-Aubrey Davis Park Improvements\DESIGN\Drawings\Contract\21098SITE.dwg 5/10/2022 7:52 PM

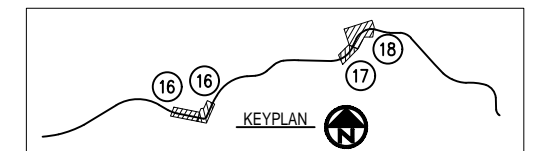


**GENERAL NOTES**

1. STATION/OFFSET SHALL BE TAKEN FROM CENTER OF FEATURE UNLESS OTHERWISE NOTED.

**CONSTRUCTION NOTES**

- 1 CEMENT CONCRETE TRAIL. SEE DETAIL, SHEET 19.
- 2 COLORED SURFACE PAVEMENT TREATMENT. SEE DETAIL, SHEET 19.
- 6 SCORED CEMENT CONCRETE WITH DECORATIVE COLOR TREATMENT. SEE DETAIL, SHEET 19.
- 13 TRAIL INFORMATION & WAYFINDING MARKER.



NO.	DATE	BY	APPR.	REVISIONS

<b>Approved By</b>		21098SITE.dwg FILENAME	
ENGINEERING MANAGER	DATE	DESIGNED BY	DATE
PROJECT MANAGER	DATE	DRAWN BY	DATE
PROJECT ENGINEER	DATE	CHECKED BY	DATE

**KPG**  
PSOMAS  
Seattle  
3131 Elliott Avenue, Suite 400  
Seattle, WA 98121 206.286.1640  
Tacoma | Wenatchee | KPG.com

**30% REVIEW  
SUBMITTAL**



**CITY OF MERCER ISLAND  
AUBREY DAVIS PARK  
TRAIL SAFETY IMPROVEMENTS**

SITE ELEMENT PLANS  
STA 28+00 TO STA 29+50

K:\PROJECTS\MERCER IS\21098-Aubrey Davis Park Improvements\DESIGN\Drawings\Contract\21098SITE.dwg 5/10/2022 7:53 PM

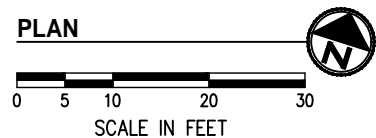
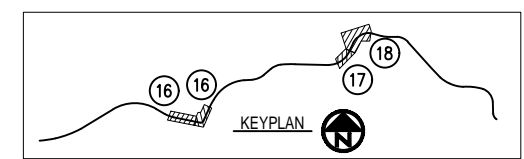


**GENERAL NOTES**

1. STATION/OFFSET SHALL BE TAKEN FROM CENTER OF FEATURE UNLESS OTHERWISE NOTED.

**CONSTRUCTION NOTES**

- 1 CEMENT CONCRETE TRAIL. SEE DETAIL, SHEET 19.
- 2 COLORED SURFACE PAVEMENT TREATMENT. SEE DETAIL, SHEET 19.
- 3 SEATWALL. SEE DETAIL, SHEET 19.
- 6 SCORED CEMENT CONCRETE WITH DECORATIVE COLOR TREATMENT. SEE DETAIL, SHEET 19.
- 7 FENCING. SEE DETAIL, SHEET 19.
- 9 PET WASTE BAG DISPENSER.
- 10 WASTE AND RECYCLE RECEPTACLE. SEE DETAIL SHEET 19.
- 12 BICYCLE CORRAL. SEE DETAIL, SHEET 19.
- 13 TRAIL INFORMATION & WAYFINDING MARKER.
- 14 CEMENT CONCRETE PAD.



NO.	DATE	BY	APPR.	REVISIONS

<b>Approved By</b>		21098SITE.dwg	
ENGINEERING MANAGER	DATE	DESIGNED BY	DATE
PROJECT MANAGER	DATE	DRAWN BY	DATE
PROJECT ENGINEER	DATE	CHECKED BY	DATE

**KPG**  
PSOMAS  
Seattle  
3131 Elliott Avenue, Suite 400  
Seattle, WA 98121 206.286.1640  
Tacoma | Wenatchee | KPG.com

**30% REVIEW  
SUBMITTAL**



**CITY OF MERCER ISLAND  
AUBREY DAVIS PARK  
TRAIL SAFETY IMPROVEMENTS**

**SITE ELEMENT PLANS  
STA 29+50 TO STA 32+00**  
KPG PROJECT No. 21098 SHT 18 OF 18