

City of Mercer Island

Parks and Recreation Commission

Department Report

October 5, 2023



City Hall Closure: Accessing City Services

Customer Service Team

(206) 275-7600

CustomerService@mercerisland.gov

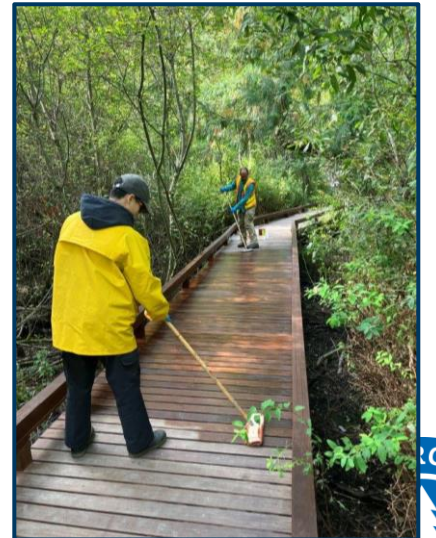
(staffed Mon-Fri 8:30a-5:00p, except holidays)

- For the quickest and fastest service, community members should contact the City of Mercer Island Customer Service Team.
- The City's Customer Service Team can help answer your questions about services, such as service requests, pet licensing, business licenses, or parking permits during the closure of City Hall.
- The Customer Service Team can also assist you in getting connected to other City department teams as needed.



Parks and Natural Resources

- Crews testing out electric leaf blowers with funds allocated from the Climate Action Plan
- Ellis Pond boardwalk pressure washed and stained
- Walsh Group started seasonal occupation of half of Luther Burbank South lot through May 15th, 2024
- Tree removals this week for safety, dead and decaying trees on City properties and rights-of way



Parks and Natural Resources

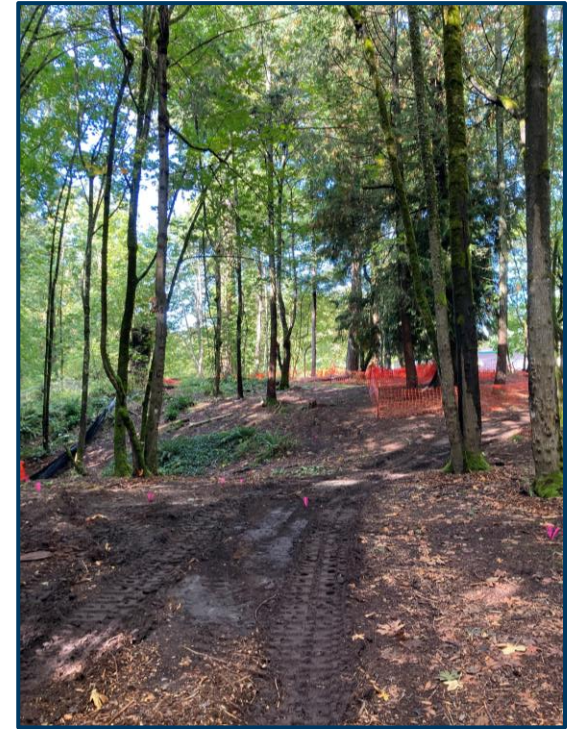
- Park bench donations have restarted. Donors can contribute to refurbish or replace
- Seasonal closures of beach restrooms: Clarke, Groveland, Luther Burbank Swim beach



Bike Skills Area- Update

BSA construction has started!

- Builders from American Ramp Company and Creative Native Concepts arrived on-site this week to begin constructing the new Bike Skills Area.
- Our Parks crews unloaded 25 pallets of wooden features at the Shop today; these are being shuttled to the lower parking area at Island Crest Park, where they will be staged for construction. (The upper parking area at ICP remains open.)
- Parking and playground access at Deane's are also limited during construction.
- Construction details and progress will continue to be shared on Let's Talk: www.mercerisland.gov/bikeskillsarea
- Site tours- If you'd like a behind the scenes tour just reach out.



Save the Date: Arbor Day Event

- Come celebrate Arbor Day at Luther Burbank Park at **9:45 AM on Saturday, October 21.**
- We'll be planting a tree to commemorate the opening of the Luther Burbank South Shoreline Trail.
- Stick around at 10 AM to volunteer!
- Additional information can be found here:
<https://mtsgreenway.org/event/mercer-island-arbor-day-2023/>



MERCER ISLAND HALLO-WEEKEND

TRICK OR TREAT IN TOWN CENTER
Friday, October 27, 4 - 6pm



A map of participating businesses will be posted at
www.mercerisland.gov/mihalloweekend

Coordinated by



Pumpkin Walk
Sunday, October 29, 5 - 8pm
Mercerdale Park



Join a fun, family friendly walk along the Mercerdale loop. The path will be lined with a glowing display of carved pumpkins.

Carvers of all ages are encouraged to participate in the display. Carved pumpkins can be dropped off from 12pm - 4pm on the day of the event at Mercerdale Park. Pumpkins can be retrieved the following day (if desired).

www.mercerisland.gov/mihalloweekend

We are looking for sponsors! If you are interested, please contact miparks@mercerisland.gov



Thank you!

