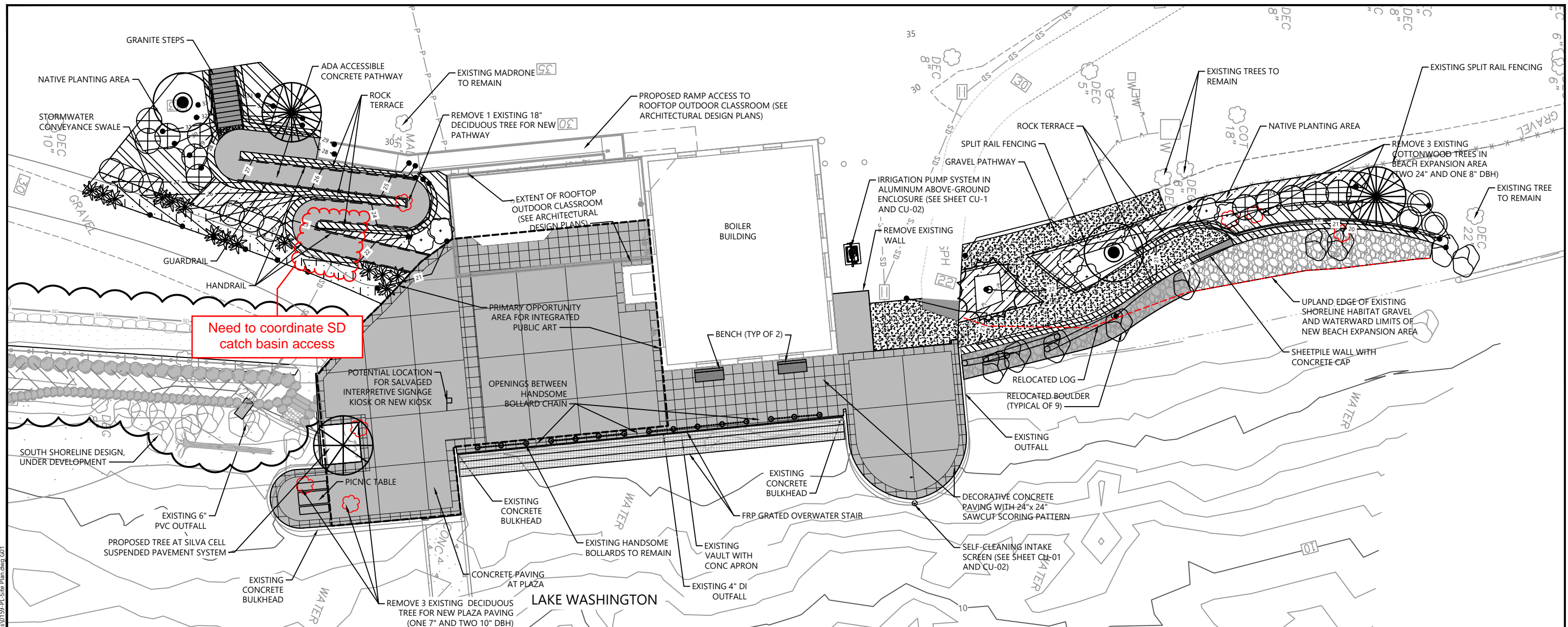


Aug 18, 2021 5:29pm cwe
 K:\Projects\0159-KPEF Consulting Engineers\Mercer Island Luther Burbank Dock Repair\Construction Plans\0159-Pl-Site Plan.dwg G01



Need to coordinate SD catch basin access

LEGEND:

- EXISTING CONTOUR
- ☁ EXISTING TREE TO RETAIN
- ☒ EXISTING TREE TO REMOVE
- - - EXISTING UPLAND EDGE OF SHORELINE HABITAT GRAVEL
- ⬭ EXISTING BOULDER TO RETAIN
- - - PROPOSED CONTOUR
- ▧ DECORATIVE CONCRETE PAVING WITH 24"x 24" SAWCUT SCORING PATTERN
- ▩ CONCRETE PAVING WITH SAWCUT JOINT SCORING
- ▨ GRAVEL PATHWAY
- EXISTING BOLLARD AND CHAIN TO REMAIN
- ▩ HABITAT GRAVEL
- ▩ GRAVEL OF COBBLE
- ▩ ROCK TERRACE
- ▩ GRATED WATER ACCESS STEPS
- GUARDRAIL
- HANDRAIL
- SPLIT RAIL FENCING
- ▩ PICNIC TABLE
- ▩ BENCH
- EXISTING LARGE WOODY DEBRIS RELOCATED
- PROPOSED TREE
- PROPOSED SHRUBS/GROUNDCOVERS
- ▩ RIPARIAN SHRUBS
- ▩ GROUNDCOVER
- ▩ STORMWATER CONVEYANCE PLANTING
- ▩ SALVAGED INTERPRETIVE SIGNAGE KIOSK/NEW KIOSK

NOTES:

- HORIZONTAL DATUM: WASHINGTON STATE PLANE NORTH ZONE, NAD83 (2011), U.S. SURVEY FEET
- VERTICAL DATUM: NAVD88

SCALE IN FEET

0 10 20

NORTH

30% DESIGN SUBMITTAL - NOT FOR CONSTRUCTION

REVISIONS				
REV	DATE	BY	APP'D	DESCRIPTION

DESIGNED BY: A. SPOONER

DRAWN BY: T. GRIGA/C.WEE

CHECKED BY: P. HUMMEL

APPROVED BY: A. SPOONER

SCALE: AS NOTED

DATE: MONTH YYYY

MERCER ISLAND LUTHER BURBANK DOCK REPAIR

COMPOSITE SITE PLAN

G-02

G-021

SHEET # 2 OF #

PLAN INTENDED TO BE VIEWED IN COLOR. ADJACENT BLOCK IS "BLUE" INCH SCALE ACCORDINGLY