



# 2024 Herbicide Report and 2025 Plan

Open Space Conservancy Trust  
July 17<sup>th</sup>, 2025

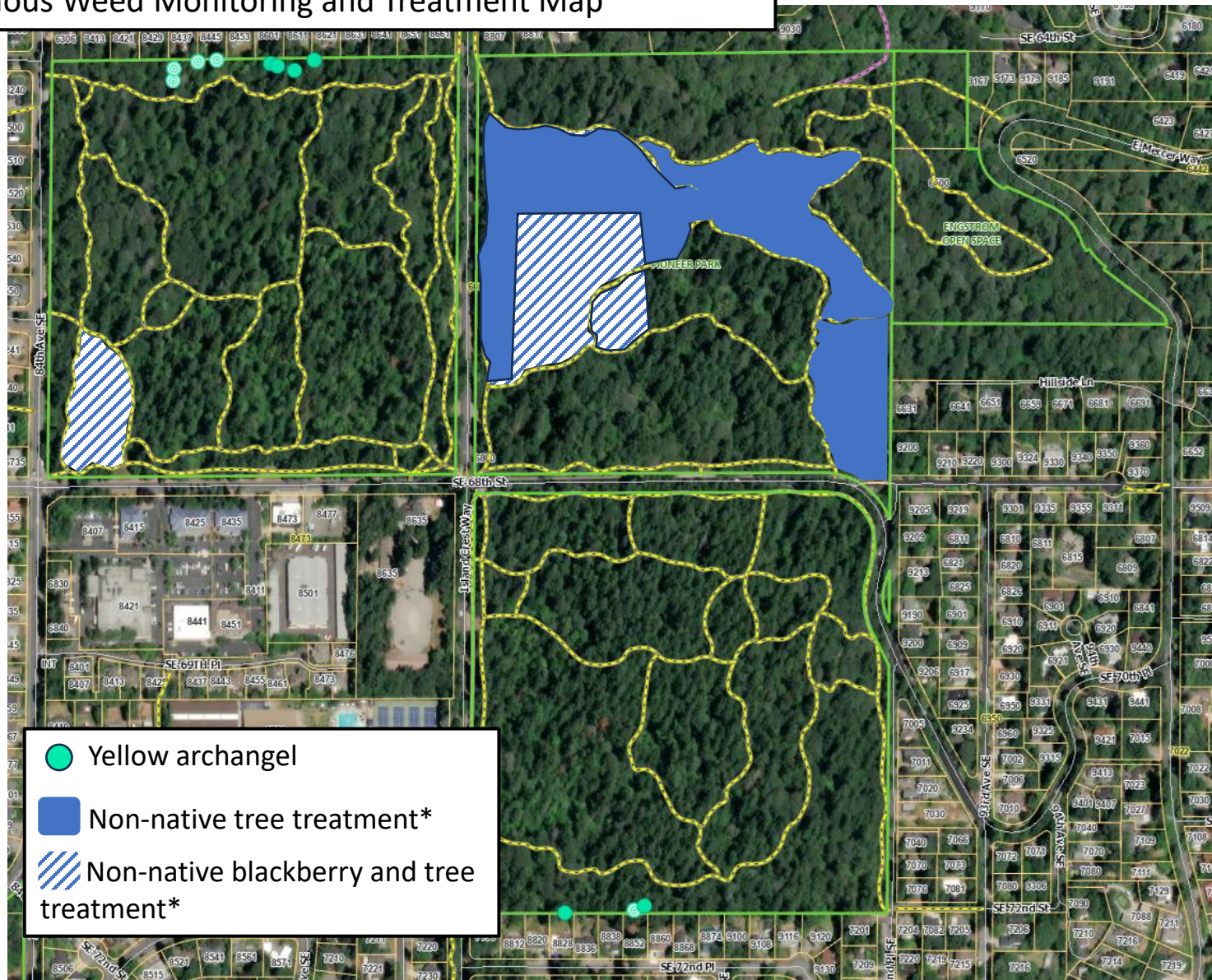
# Open Space Conservancy Trust

## Herbicide Use Protocol

- Prescribes when herbicide may be used in Pioneer Park and Engstrom Open Space.
- Adaptive management framework to ecological restoration.
- Allows for strategic herbicide use when manual removal would cause greater ecological damage.

# Pioneer Park and Engstrom Open Space

## Exhibit 1: 2024 Noxious Weed Monitoring and Treatment Map

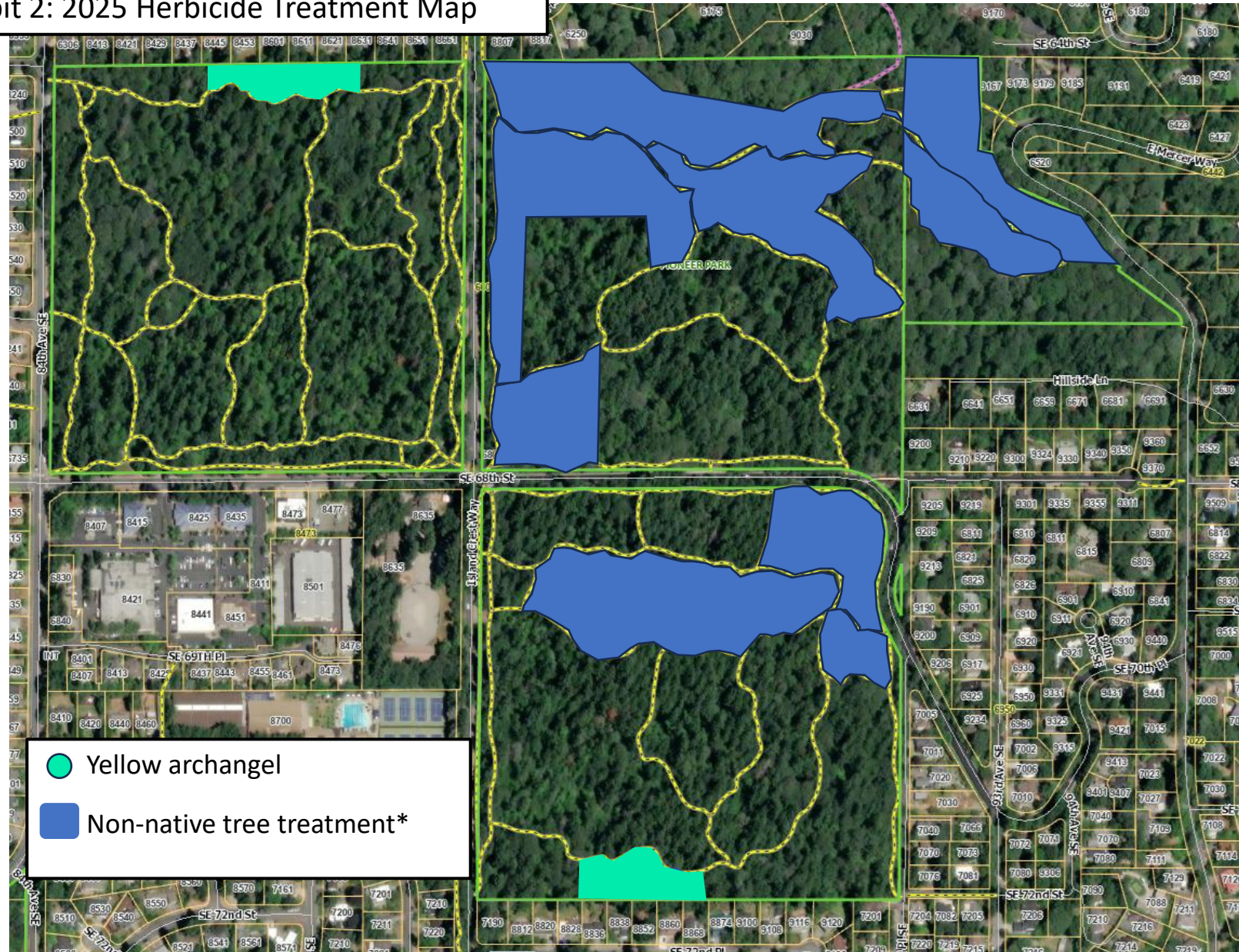


\*Highlighted locations received treatment where non-native trees were found that could not be effectively dug up and where non-native blackberry was growing up through native plants. These are sites where work was contracted in 2024. This map does not represent a full survey of all non-native trees or blackberry on Trust property.



# Pioneer Park and Engstrom Open Space

## Exhibit 2: 2025 Herbicide Treatment Map



\*Highlighted locations received treatment where non-native trees were found that could not be effectively dug up. These are sites where work was contracted in 2025. This map does not represent a full survey of all non-native trees or blackberry on Trust property.





# Yellow archangel

- Fast-growing, herbaceous perennial
- Spreads by stem fragments, root fragments, and seeds
- Class B noxious weed in King County- control is recommended, not required
- Hand pull small patches
- Treated in spring and fall using glyphosate + triclopyr + surfactant (spreader-sticker)





# Invasive Tree Treatment

- English laurel (*Prunus laurocerasus*)
  - English holly (*Ilex aquifolium*)
  - European mountain ash (*Sorbus aucuparia*)
  - English hawthorn (*Crataegus monogyna*)
  - wild cherry (*Prunus avium*)
  - Portugal laurel (*Prunus lusitanica*)
  - black locust (*Robinia pseudoacacia*)
  - cherry plum (*Prunus cerasifera*)
  - tree-of-heaven (*Ailanthus altissima*)
- EZ-Ject lance for larger trees
  - Cut and paint for smaller trees



# Himalayan and evergreen blackberry

- Quickly forms dense thickets
- Prevents tree regeneration
- Manually dig roots of most plants
- Where growing up through or immediately next to native plant, cut- paint herbicide

