

# Appendix F: 2023 Parking Inventory and Utilization

In 2023, the City contracted with IDAX Data Solutions, a multimodal data collection firm, to update the parking data collected in 2022. The following appendix provides an overview of the methodology and findings from this effort.

## Methodology

Parking counts were conducted on Thursday, June 8, and Saturday, June 10, 2023, to mirror the timing of the 2022 data collection. Parking occupancy counts (i.e. number of parked cars) were conducted every two hours from 10 am to 8 pm, inclusive, on both days to understand parking demand throughout the day on typical parking conditions. Parking length of stay counts were also conducted at 5 pm and every two hours from 10 am to 8 pm, inclusive, on June 8 to understand how long cars stay parked in on-street spaces. For this update, inventories and counts of the North Mercer Restricted Parking District (RPD) and Sound Transit Park & Ride were also included.

## Parking Inventory Updates

Town Center data collection used the 2022 inventory (also collected by IDAX), with some changes depending on factors such as spacing between cars parked in unstriped spaces, stalls blocked off in private lots, etc., for delta of +15 on-street spaces and +4 off-street spaces. Inventories of the RPD and Park & Ride showed 127 and 455 spaces, respectively.

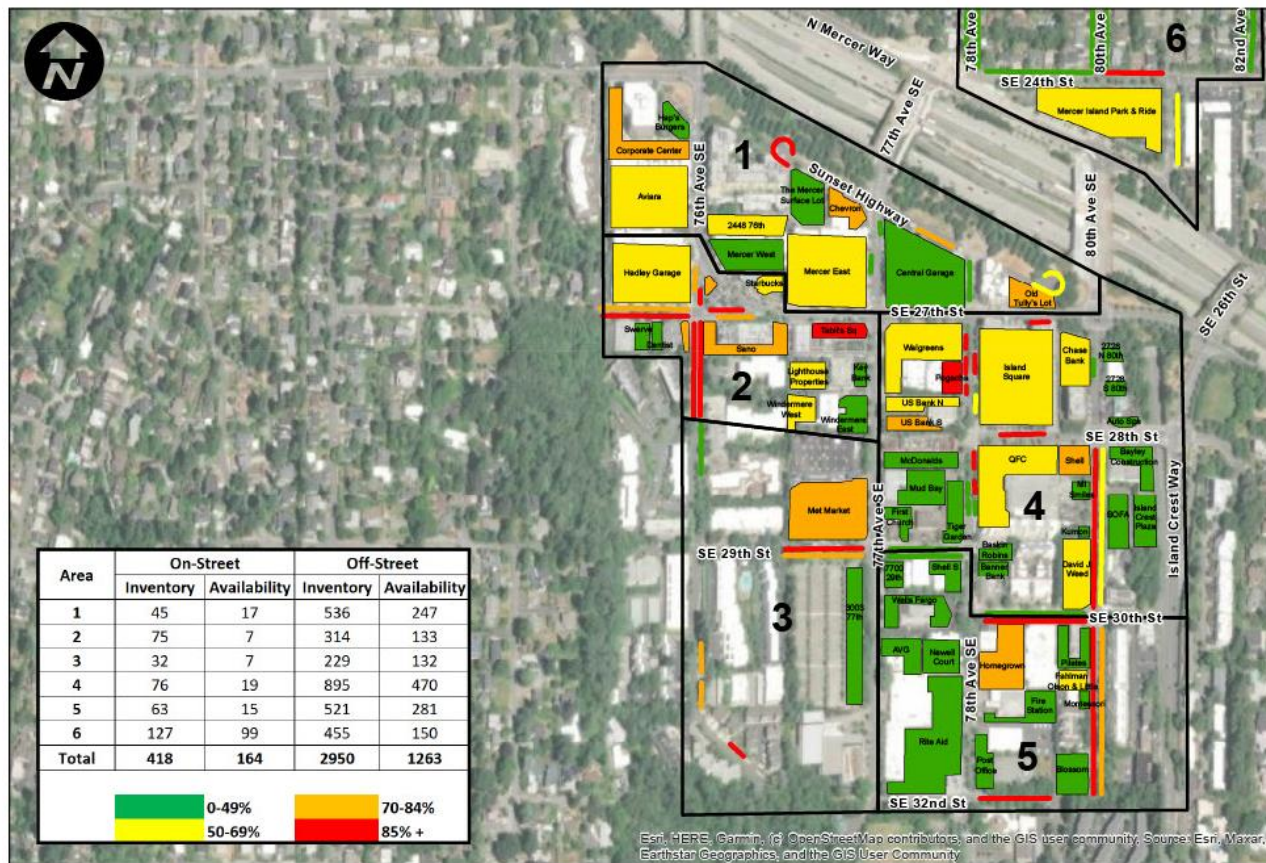
## Parking Utilization

The 2023 counts continue with the parking management assumption that the ideal occupancy threshold is 85%. When parking is 85% occupied, spaces are well-used: pricing (if used) is not needlessly deterring people from driving to the area, and it is still possible for drivers to find a space without cruising around waiting for another driver to leave, which results in increased emissions and traffic congestion. Figure 11 on the next page shows weekday parking utilization at the peak time of 12pm. As in 2022, certain block faces and parking facilities exceeded the 85% occupancy threshold, while other block faces and facilities were less than 50% occupied.

# AB 6359 Town Center Parking Study Draft Review

## Exhibit 2: New Appendix F – 2023 Parking Inventory and Utilization

Figure 11 Weekday Peak Utilization (Thursday, June 8, 2023, at 12pm)



Source: IDAX Data Solutions.

Even at peak weekday parking demand, spaces in Town Center were available:

- 65 on-street spaces were available.
- 1,113 off-street spaces were available.

Weekday utilization in the Town Center zone was down slightly compared to 2022 and still below 50% occupied.

The Park & Ride showed peak utilization of 67% at 12pm and RPD utilization only reached 22% overall.<sup>1</sup>

### Length of Stay Analysis

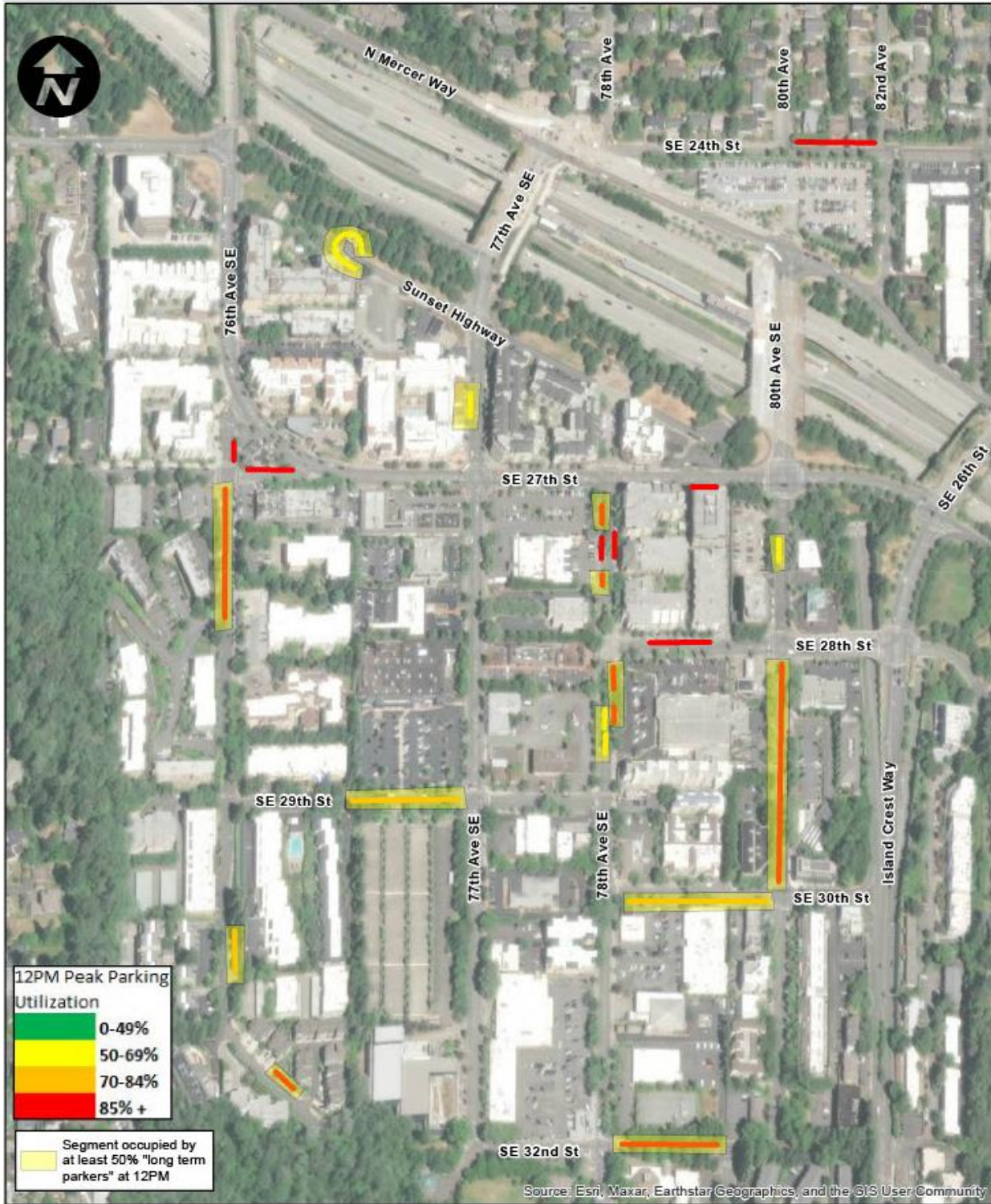
A length of stay analysis shows how long vehicles occupied on-street parking spaces in Town Center on Thursday, June 8, 2023. This analysis focused on blocks where the parking occupancy was 70% or higher and considered vehicles parked for at least four hours “long-term parkers.” **Error! Reference source not found.** on the next page shows the street segments with at least 70% occupancy and segments in which parkers were parked for at least four hours.

<sup>1</sup> In June 2023, sections of the RPD were closed or limited due to construction work by King County. At the time of data collection, the contractor was primarily working in the area north of the Park & Ride, primarily on 81<sup>st</sup> Avenue SE. Construction likely did not significantly change parking patterns since the RPD is used by residents, but some parking spaces were closed during construction.

# AB 6359 Town Center Parking Study Draft Review

## Exhibit 2: New Appendix F – 2023 Parking Inventory and Utilization

Figure 12 Length of Stay Analysis



Source: IDAX Data Solutions.

The duration data for these busy blocks showed that:

- 458 vehicles parked on these streets over the course of the count period.
- 186 of 458 (40%) were parked for 4 or more hours.

## **AB 6359 Town Center Parking Study Draft Review**

### Exhibit 2: New Appendix F – 2023 Parking Inventory and Utilization

---

- Of the 186 vehicles parked for 4+ hours, 80 vehicles (43%) were parked in 3-minute, 30-minute, or two-hour parking zones.