

Integrated Public Art Opportunities

Luther Burbank Dock Repair and Upland Improvements Project

60% Design

September 14, 2022

Presented by

Paul West, City of Mercer Island

Noelle Higgins, Anchor QEA



Agenda

Recap from Last Meeting

Boiler Building Interpretive Program

60% Design Update and Opportunities

Next Steps

Recap

- Last meeting in Sept 2021
- Reviewed 30% design
- Reviewed approach to Handsome Bollards
- Discussed opportunities for integrated public art



Handsome Bollards Proposed Openings



Opportunities for Integrated Art

Recommended theme – Nautical



Types of Art and Media

Sculptural elements to define entrances



mbauer Bay Park - Bellevue



Types of Art and Media

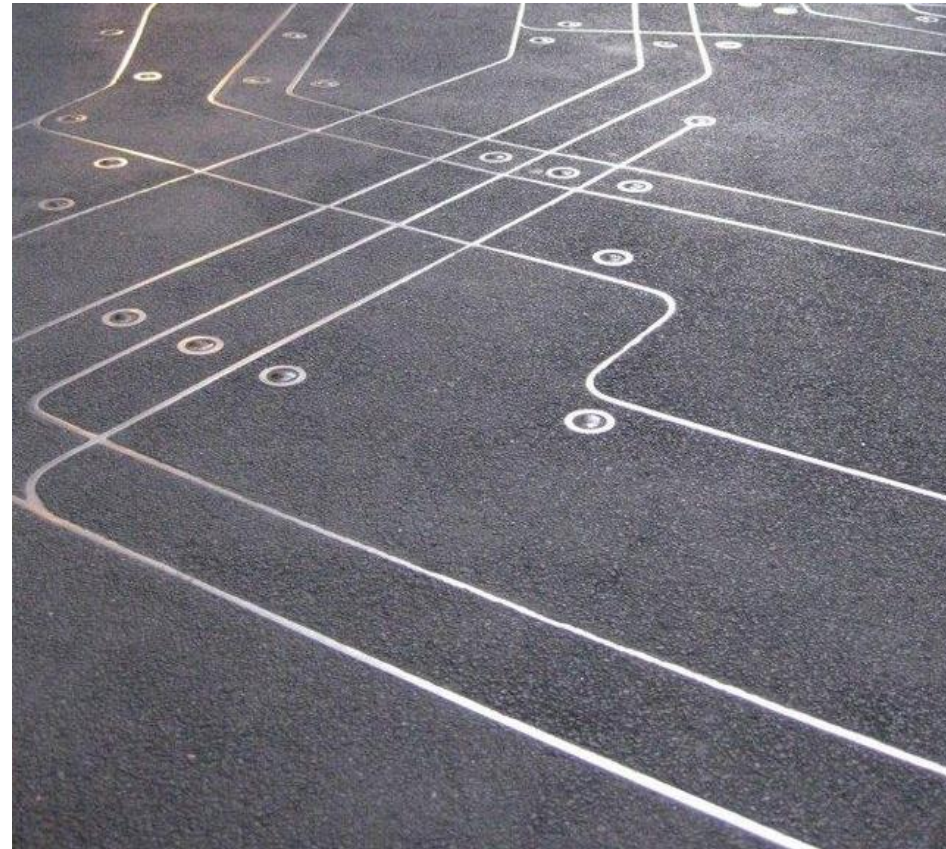
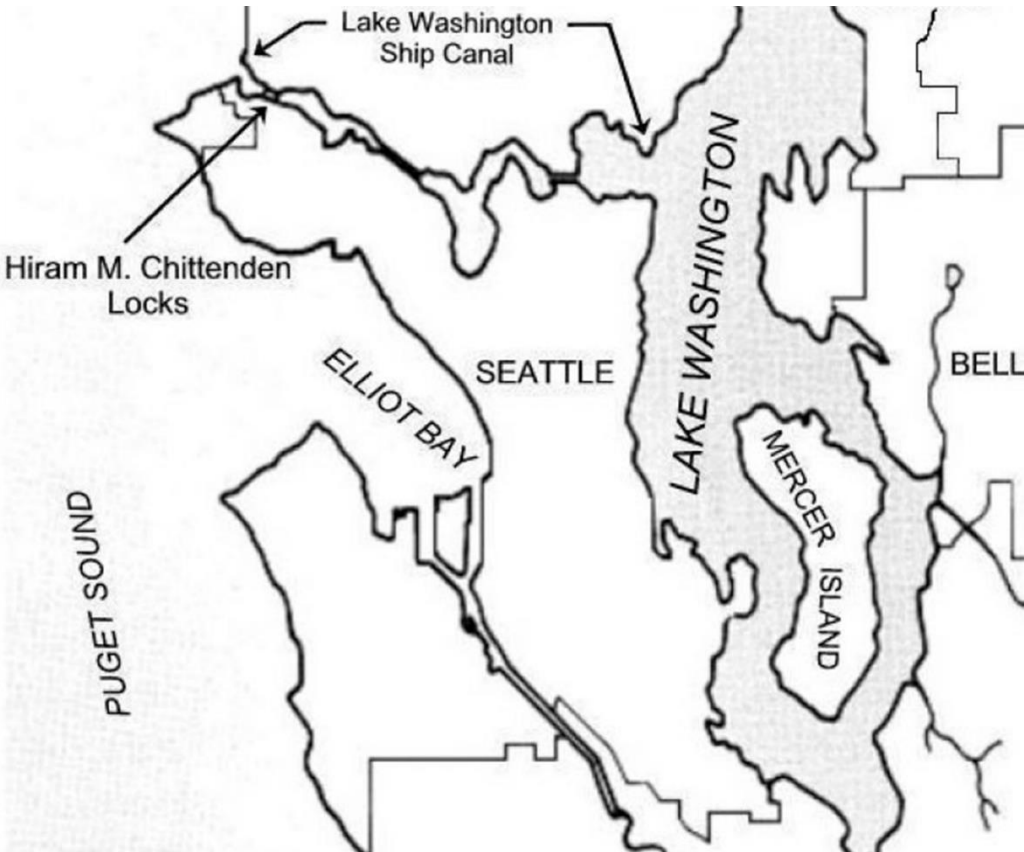
Sculptural elements to define entrances



Northwind Fishing Weir Legend
Susan Point
Green River Trail

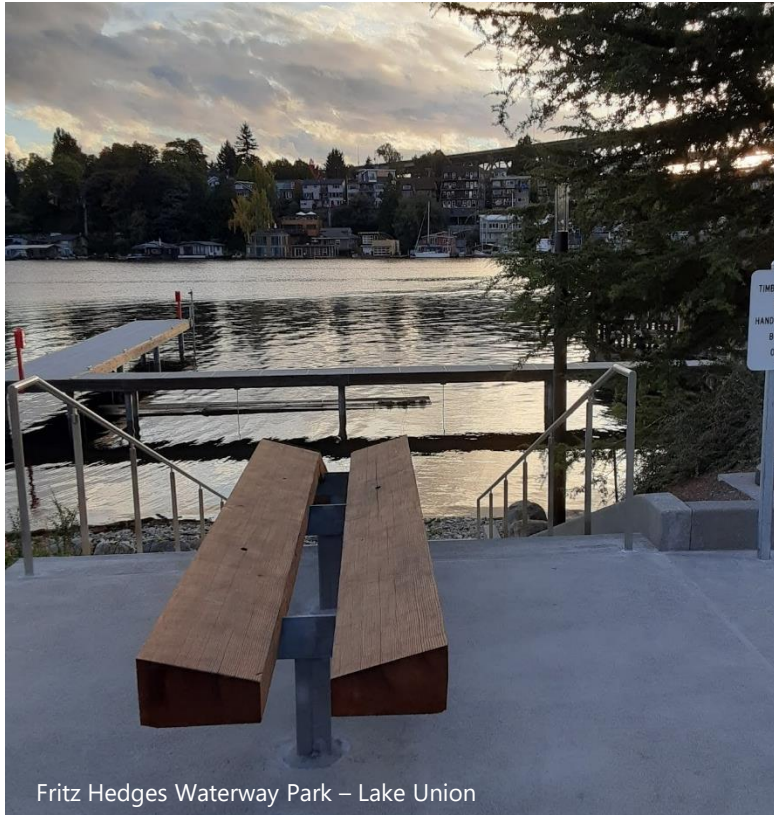
Types of Art and Media

Paving treatments with embedded materials and text



Types of Art/ and Media

Custom park elements



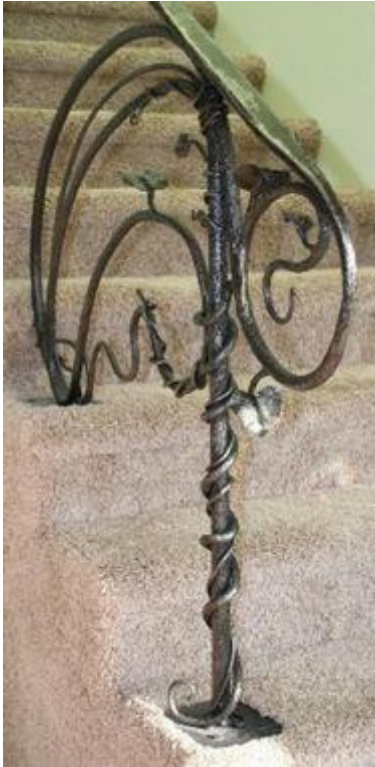
Fritz Hedges Waterway Park – Lake Union



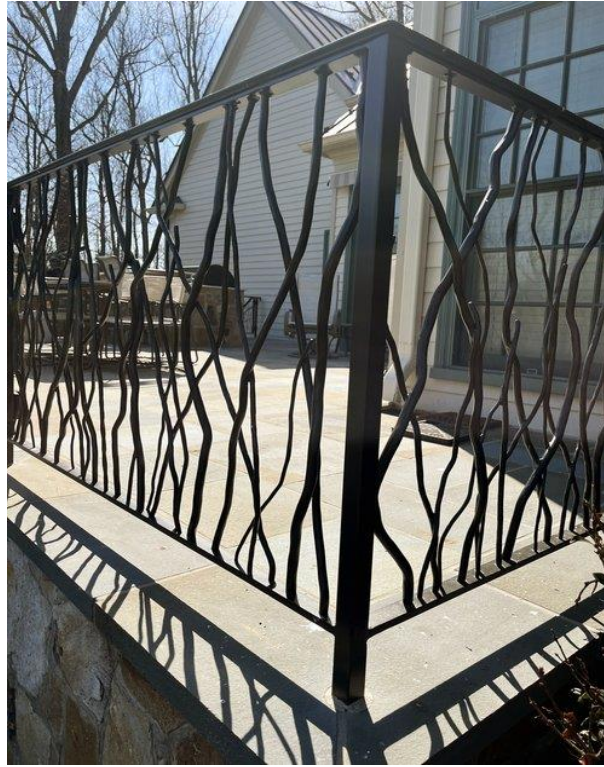
Manitou Beach Public Access

Types of Art and Media

Custom park elements – railings, handrails, fences



Fritz Hedges Waterway Park – Lake Union



Manitou Beach Public Access



Water—The Essence of Life
Susan Point
West Seattle Pump Station

Types of Art and Media

Standalone and sculptural pieces



Compass, Alan Storey
Bellevue City Hall



The Blue Trees, Konstantin Dimopoulos
Burke-Gilman Trail

Boiler Building Interpretive Program

Artistic Plaques with QR Codes



Artistic plaque style for the Boys Parental School era (1903–1965) of Luther Burbank Park.

Minimum

1. The School Building
2. The Boiler Building
3. The Dairy Barn Ruins
4. The Remnant Fruit Trees

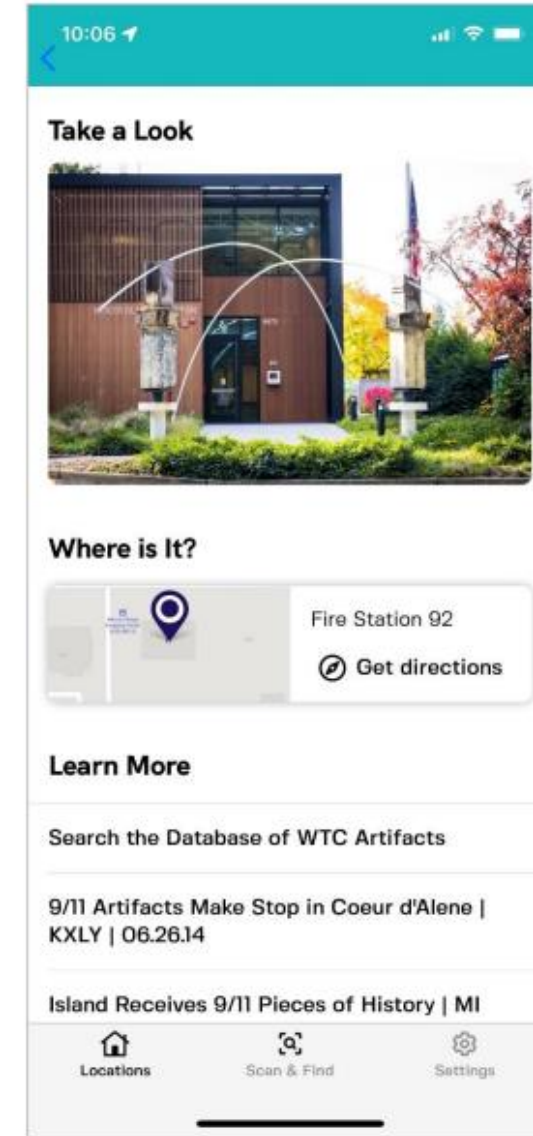
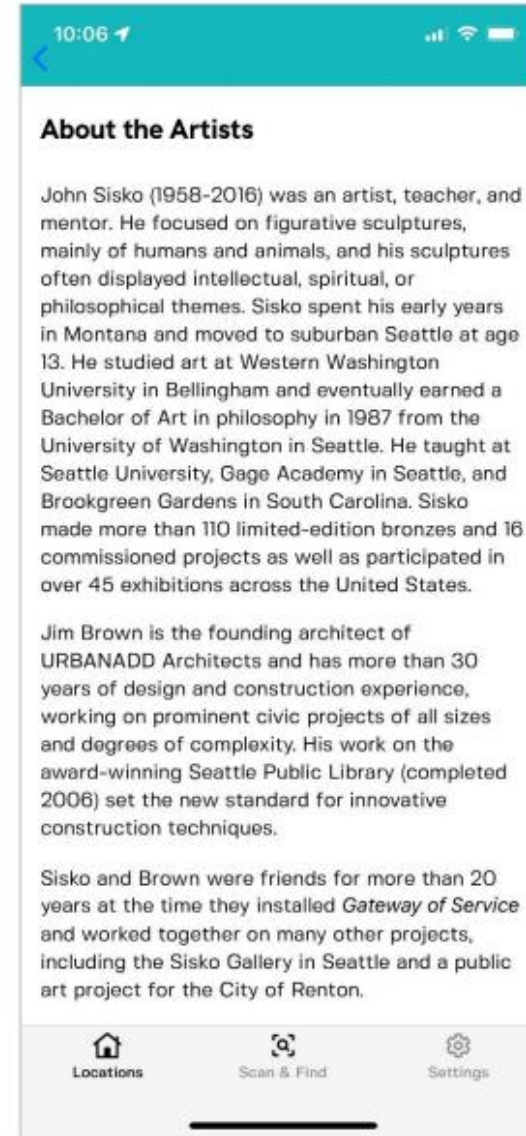
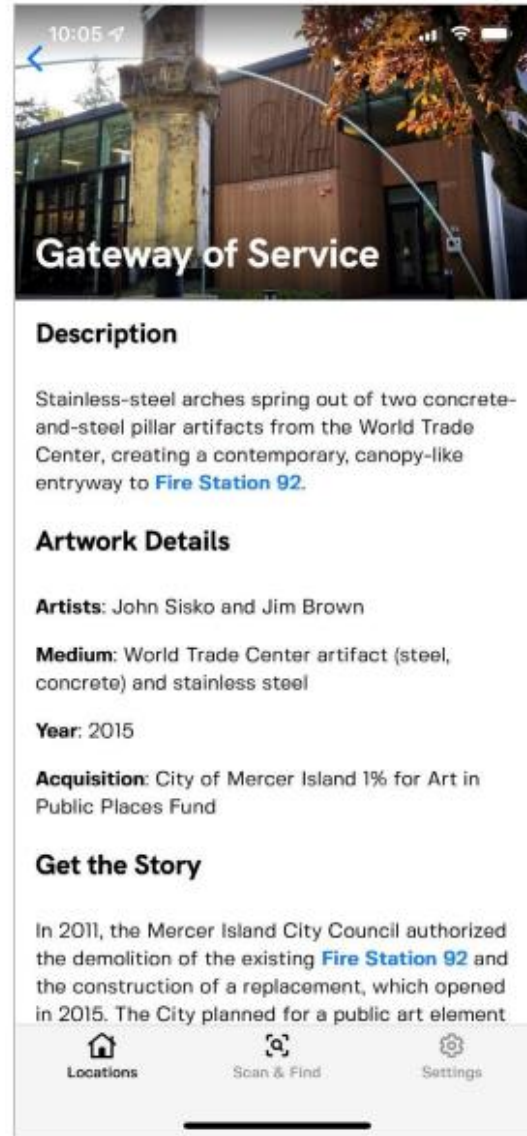
Add QR code to existing sign



Future phases to cover:

1. Natural history of park and lake
2. Pre-colonial history & First Peoples' experience
3. Park development history and modernist landscape architecture

Mercer Island's STQRY Platform



Screenshot examples of a Mercer Island art feature on the STQRY platform

Mercer Island's Interpretive Signage QR Code

example of Mercer Island's existing interpretive signs for public art. Try the QR code!

STAN
GEORGIA GERBER
2013

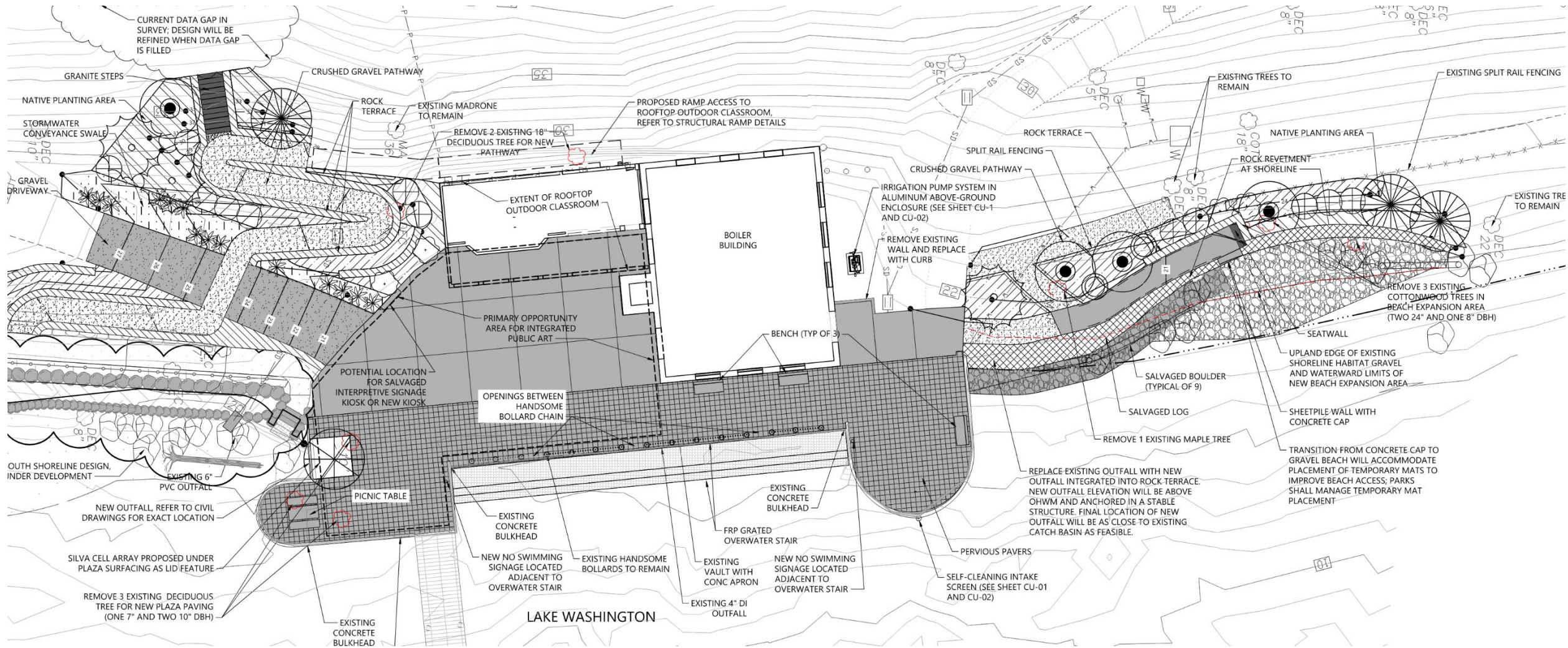
This artwork is part of the City of Mercer Island's permanent art collection. It was donated to the collection by Brandy & Pete Nordstrom.



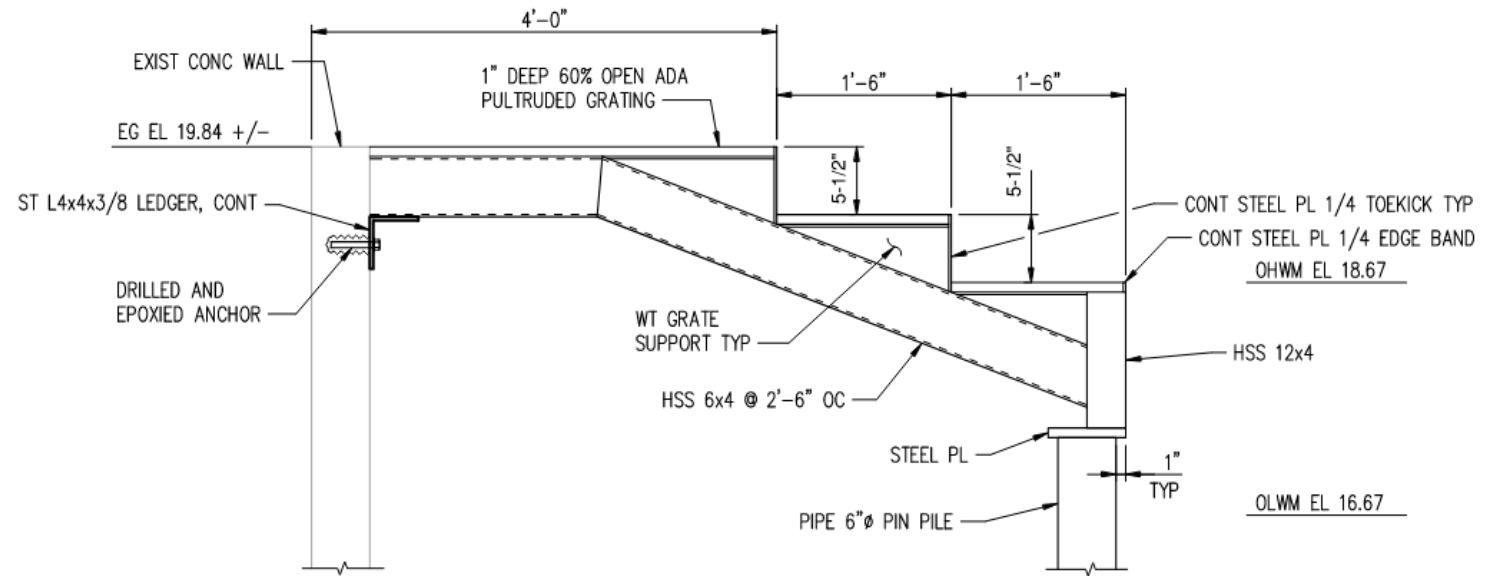
Get the STQRY

60% Design Update and Opportunities

60% Design Updates

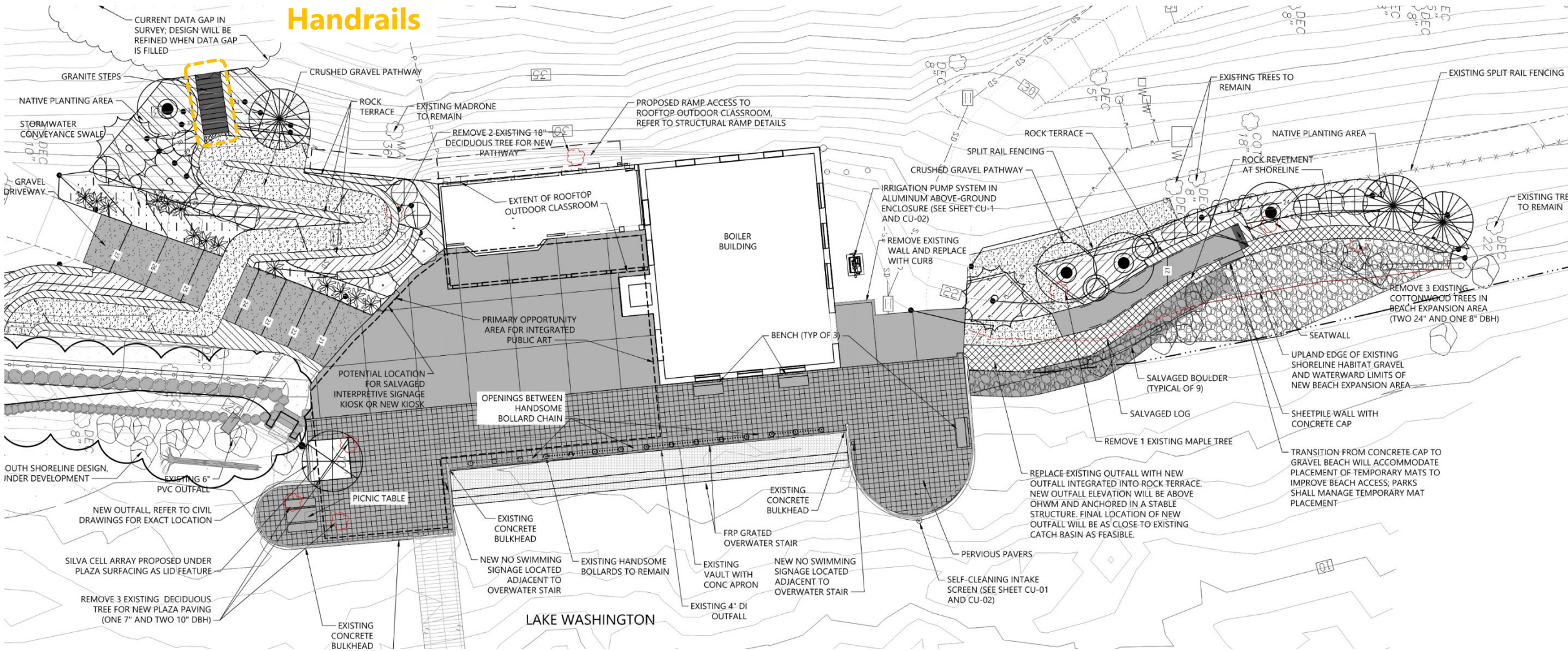


Overwater Stair Feature



60% Design – Integrated Art Opportunities

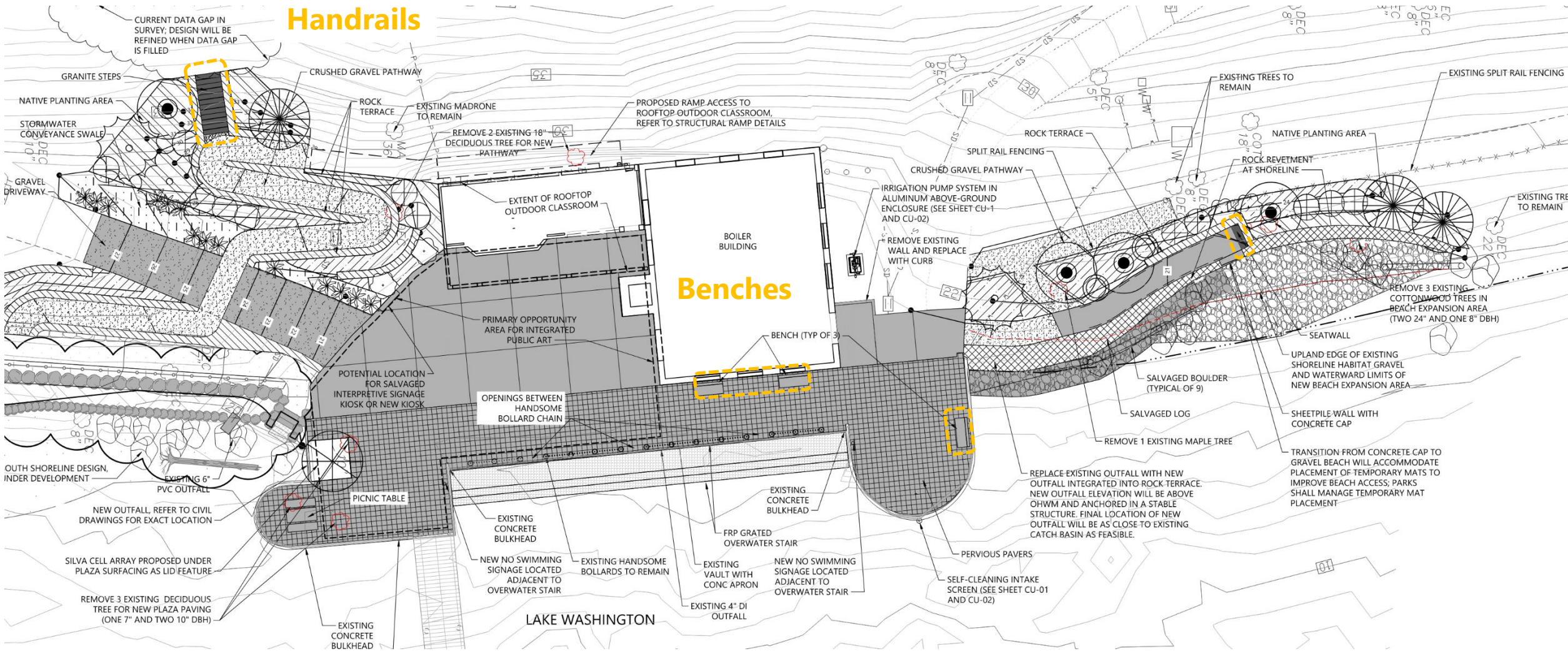
Handrails



60% Design – Integrated Art Opportunities

Handrails

Benches

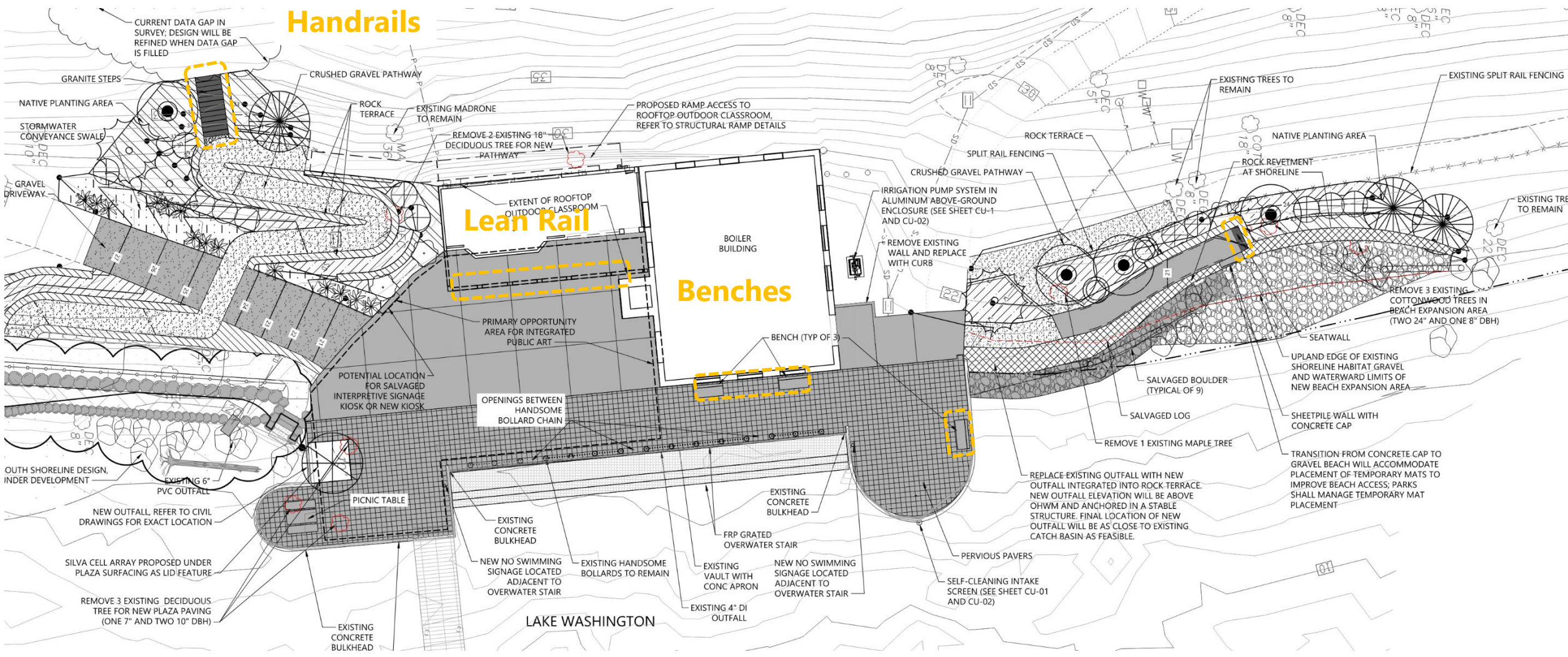


60% Design – Integrated Art Opportunities

Handrails

Lean Rail

Benches



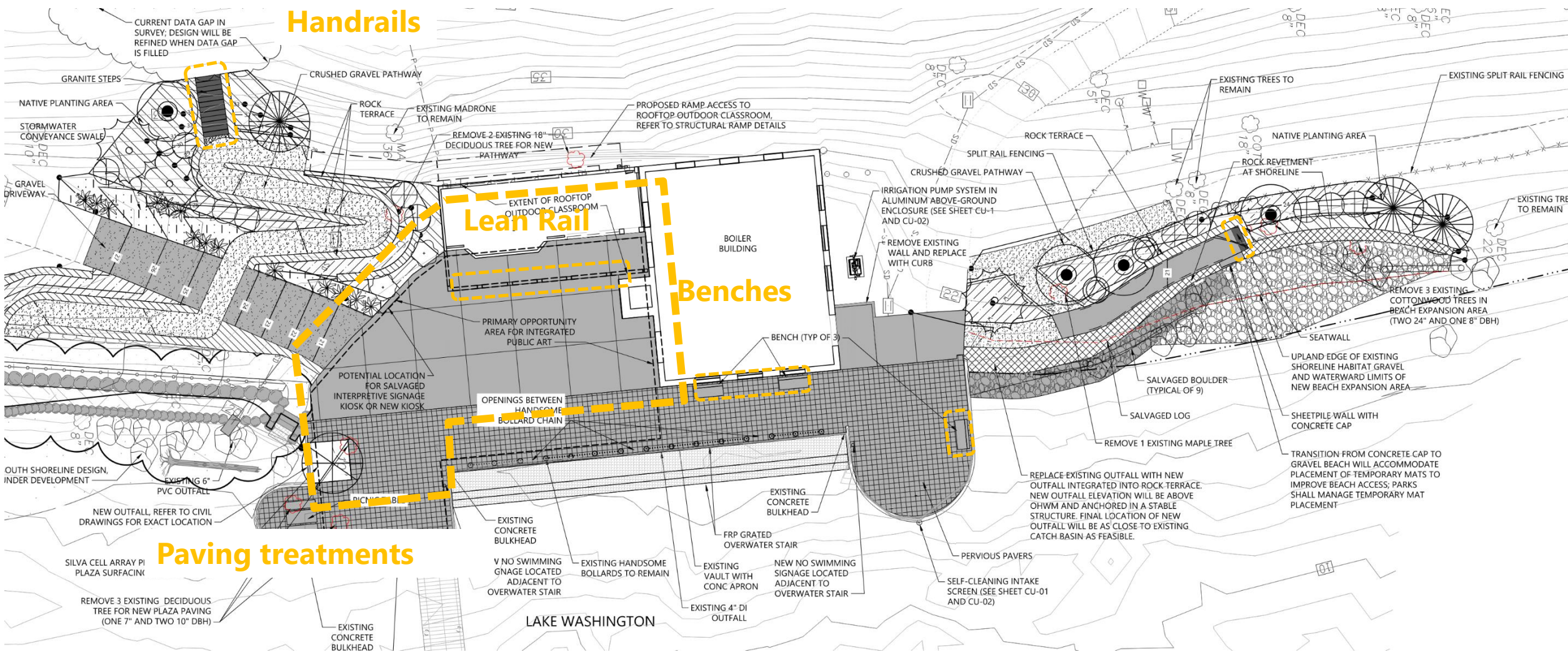
60% Design – Integrated Art Opportunities

Handrails

Lean Rail

Benches

Paving treatments



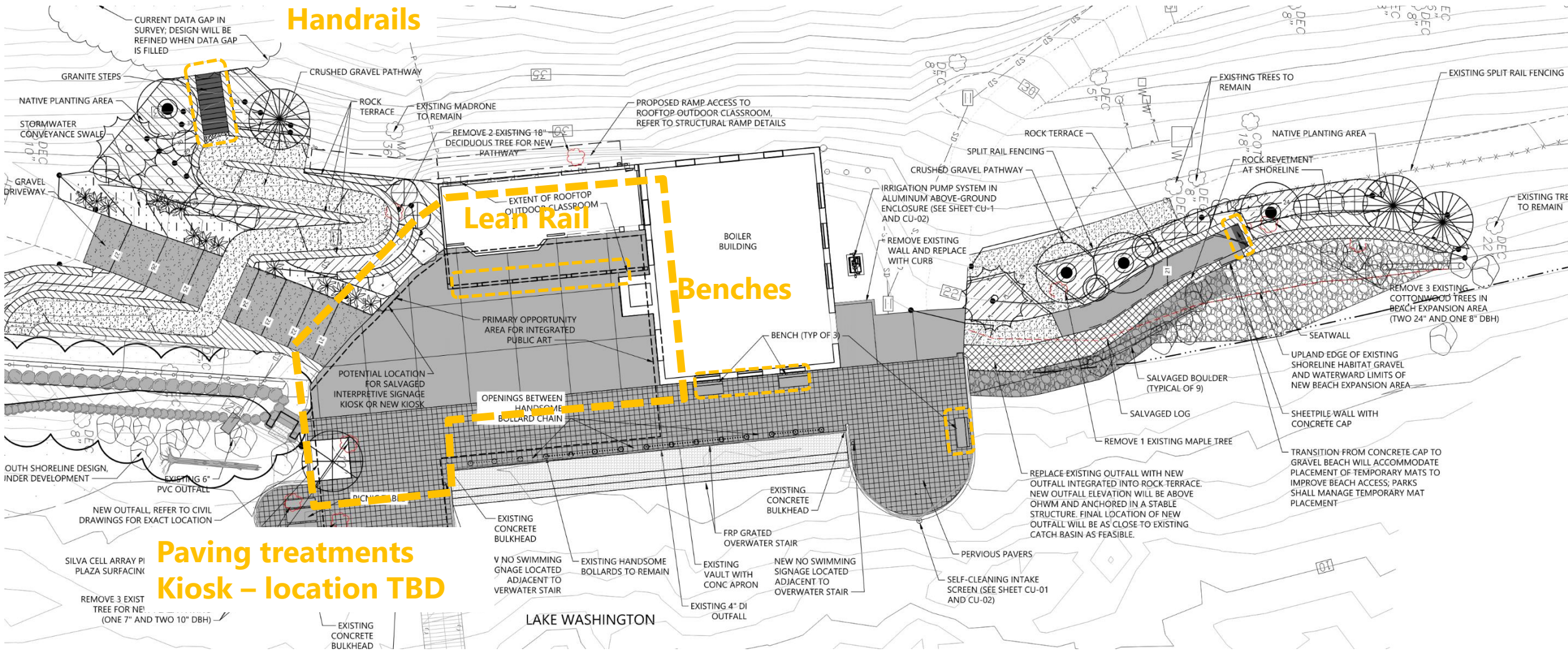
60% Design – Integrated Art Opportunities

Handrails

Lean Rail

Benches

Paving treatments Kiosk – location TBD



Thank you