



Clarke & Groveland Beach Parks Joint Infrastructure Plan



AC 26-5 | April 15, 2026

Meeting Agenda

- Project Background
- Community Engagement Summary
- Preferred Plan Review
 - Clarke Beach Park
 - Groveland Beach Park
- Public Art Integration – Opportunities
- Next Steps



Project Background



Early Site Assessment

In-Water Structures

- Groveland Beach: The overall condition of the in-water structures is fair, but degradation is evident.
- Clarke Beach: Structures have reached the end of their useful life, including degradation of the concrete stairs, timber piles, and sheet pile wall.

Geotechnical + Critical Areas Review

- No wetlands or non-piped watercourses observed at either site.
- Both parks are mapped as hazardous areas, which will require additional geotechnical study during future design phases.
- Primary concerns include soil settlement in the upland areas and beach settlement/waterfront erosion.

Restroom Accessibility

Restroom facilities at both parks are functional but are non-compliant with several ADA guidelines.

Background Survey on Community Uses

- Hosted on Let's Talk September 27-October 31, 2024
- 229 total responses

Key Takeaways & Biggest Concerns

- Most people access the parks by car, although many walk and bike.
- Beach access is the highest ranked use for visiting both parks.
- Primary park concerns include:
 - Accessibility – Trail steepness, access to beach & water, wayfinding
 - Park maintenance – Degraded amenities, pet/animal droppings, plantings, litter
 - Amenities – More picnic tables, BBQs, play opportunities, shade, trash receptacles
 - Safety – Swimming conditions, water quality, poor behaviors, off-leash dogs

City Council Priorities

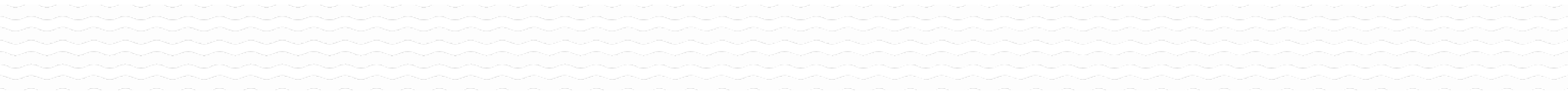
Based on the analysis of existing conditions, the City Council approved staff's recommendation to develop a **Joint Infrastructure Plan** for Clarke and Groveland Beach Parks that identifies improvements to implement in the next 10-12 years.

The Council identified the following priorities for this planning effort:

1. Docks and waterfront improvements
2. Shoreline erosion control and stabilization
3. Accessibility improvements
4. Other amenities (restrooms, parking, wayfinding, etc.) as resources allow

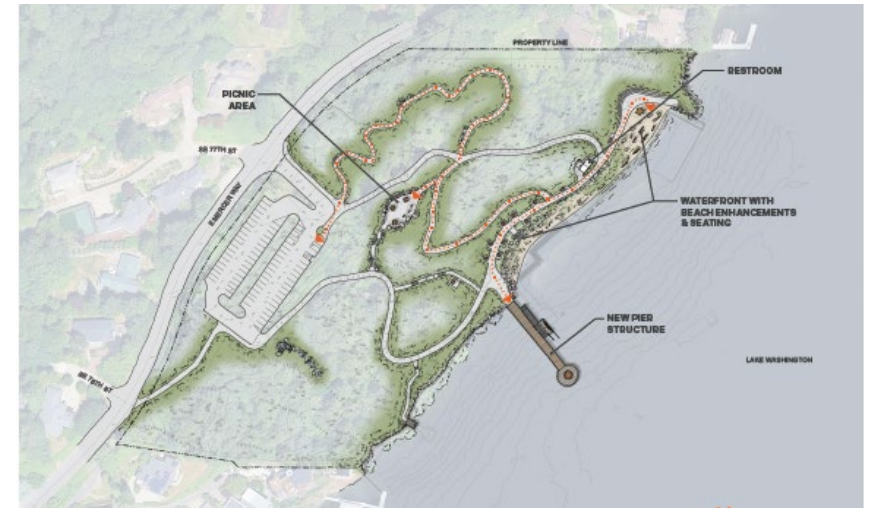


Community Engagement Overview



Design Concepts Engagement Process

- Three design concepts for each park shared with the community for feedback in fall 2025
- Concepts designed to be interchangeable – a feature in concept 1 and a feature in concept 2 could be combined into the final plan, etc.
- Several opportunities to learn about and provide feedback on the concepts, including:
 - Virtual “Open House” presentations
 - Online survey (180 responses)
 - Pop-ups at community events
- Opportunities promoted through park neighbor mailer, MI Weekly & social media posts, community partner channels, and posters staged at the parks.



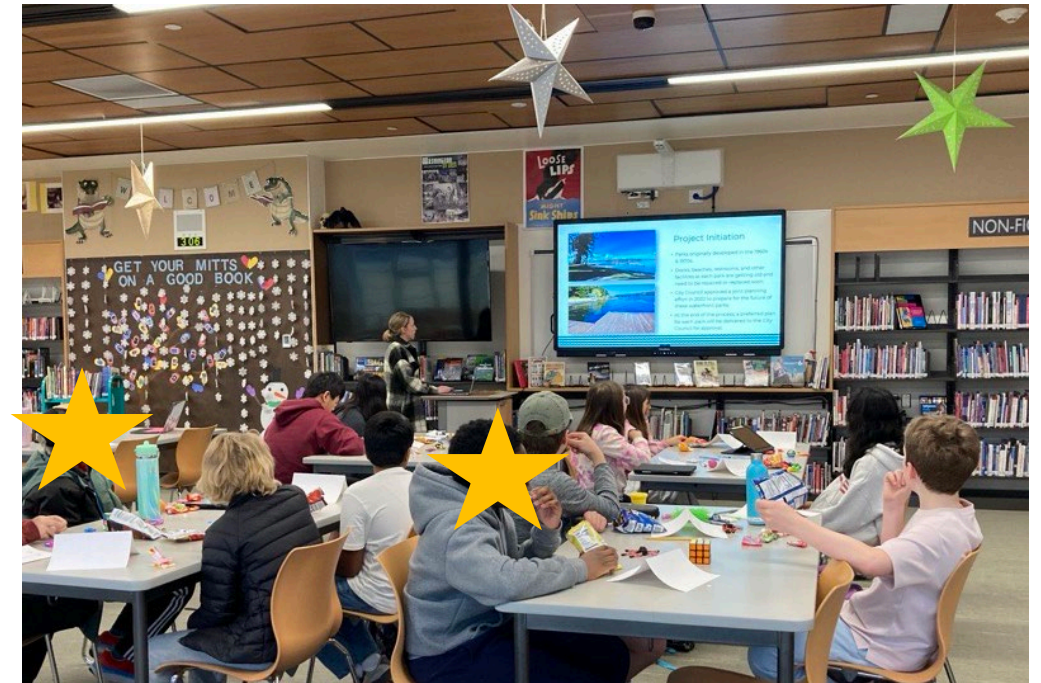
Concept 1 – Clarke Beach Park



Concept 1 – Groveland Beach Park

Engagement with Mercer Island Youth/Teens

- From October 2025 to March 2026, staff conducted outreach to Mercer Island youth and teens to solicit more feedback for Groveland Beach.
- Engagement activities included:
 - Met with Islander Middle School students from the Principal's Student Advisory on December 11
 - Met with Mercer Island High School students on March 3
 - Launched a student-only online survey about Groveland Beach on March 3
 - Promoted the project and survey on *Breakfast on the Bridge* on March 17



IMS students learned about the project and provided feedback on December 11, 2025.

Design Concepts Engagement – Key Takeaways

Clarke Beach Park

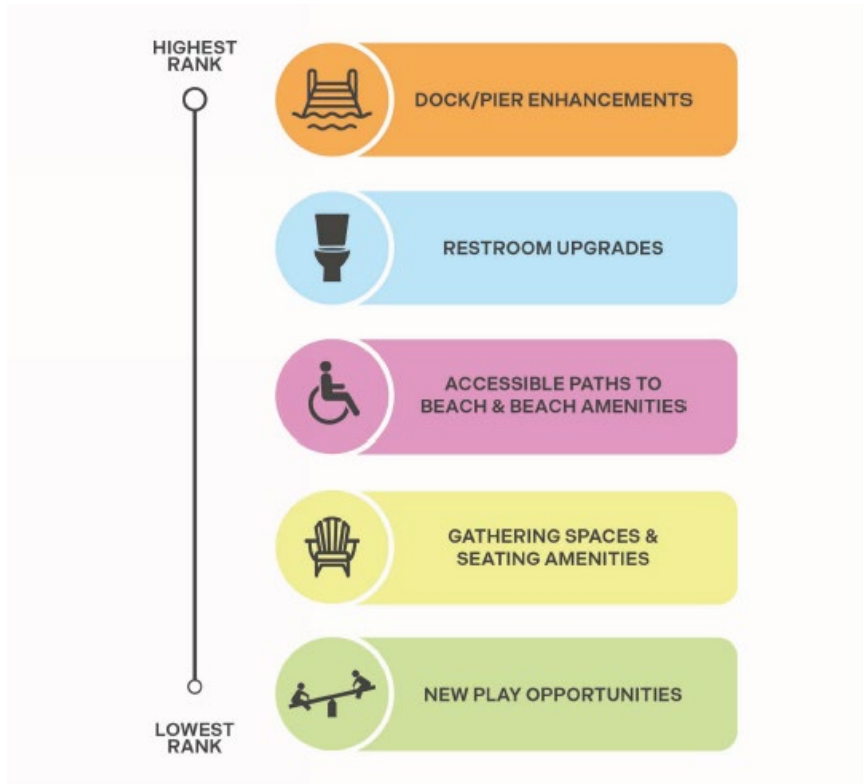
- Strong support for accessibility overall
- Preference for a combination of grass areas, tiered seating, and natural features at the waterfront as well as two pier structures (either repaired or replaced)
- Support for amenities (picnic areas, benches, etc.) that facilitate individual rather than group experiences

Groveland Beach Park

- Preference for grass seating areas and picnic pockets at the waterfront
- Strong support for a new floating dock with an expanded platform and/or detached floating dock
- Preference for upgrades to the play area in the existing location, including adding seating

Community Priorities for Both Parks

Clarke Beach Park

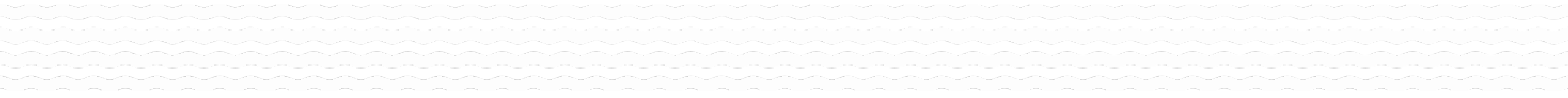


Groveland Beach Park

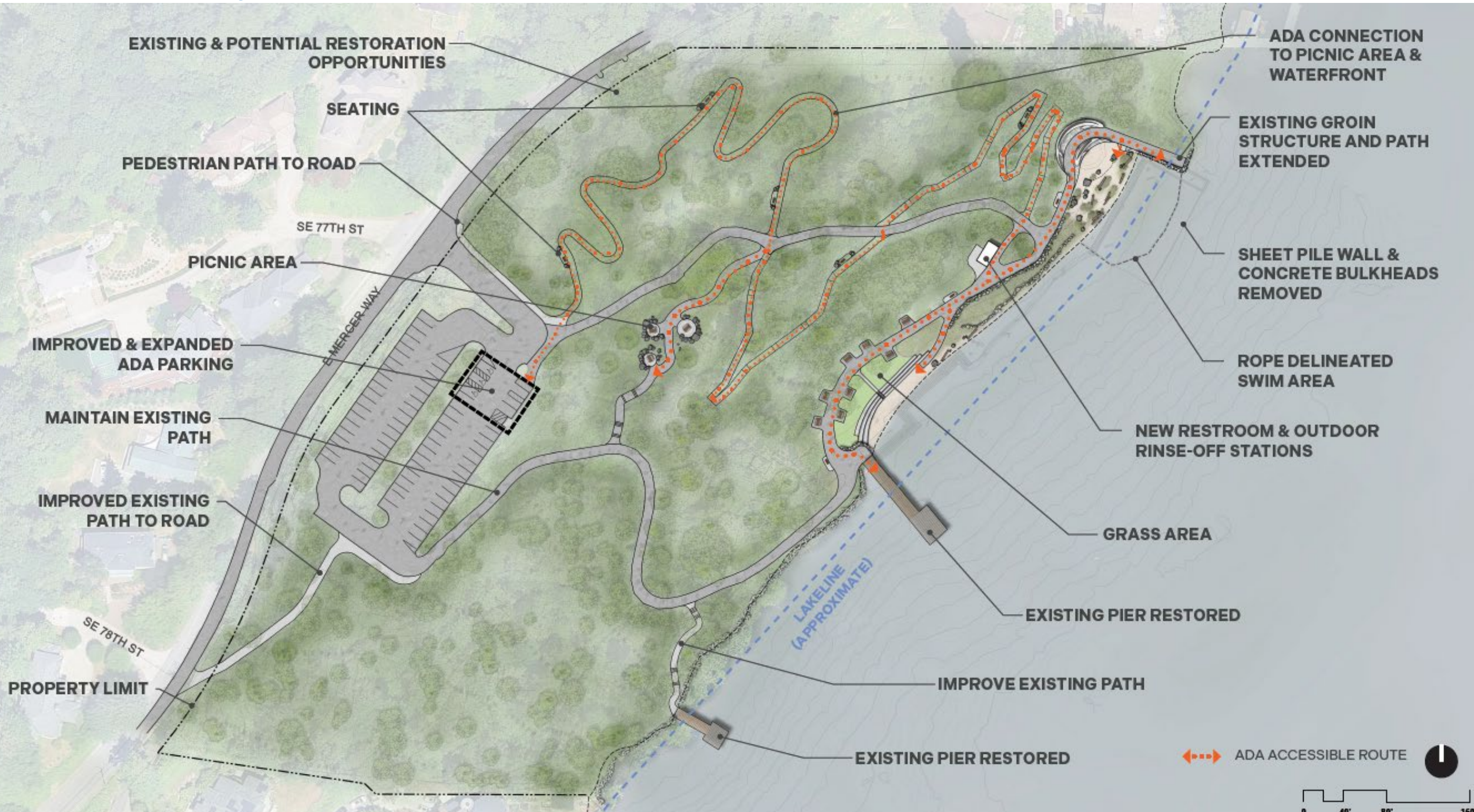




Clarke Beach Park Preferred Plan

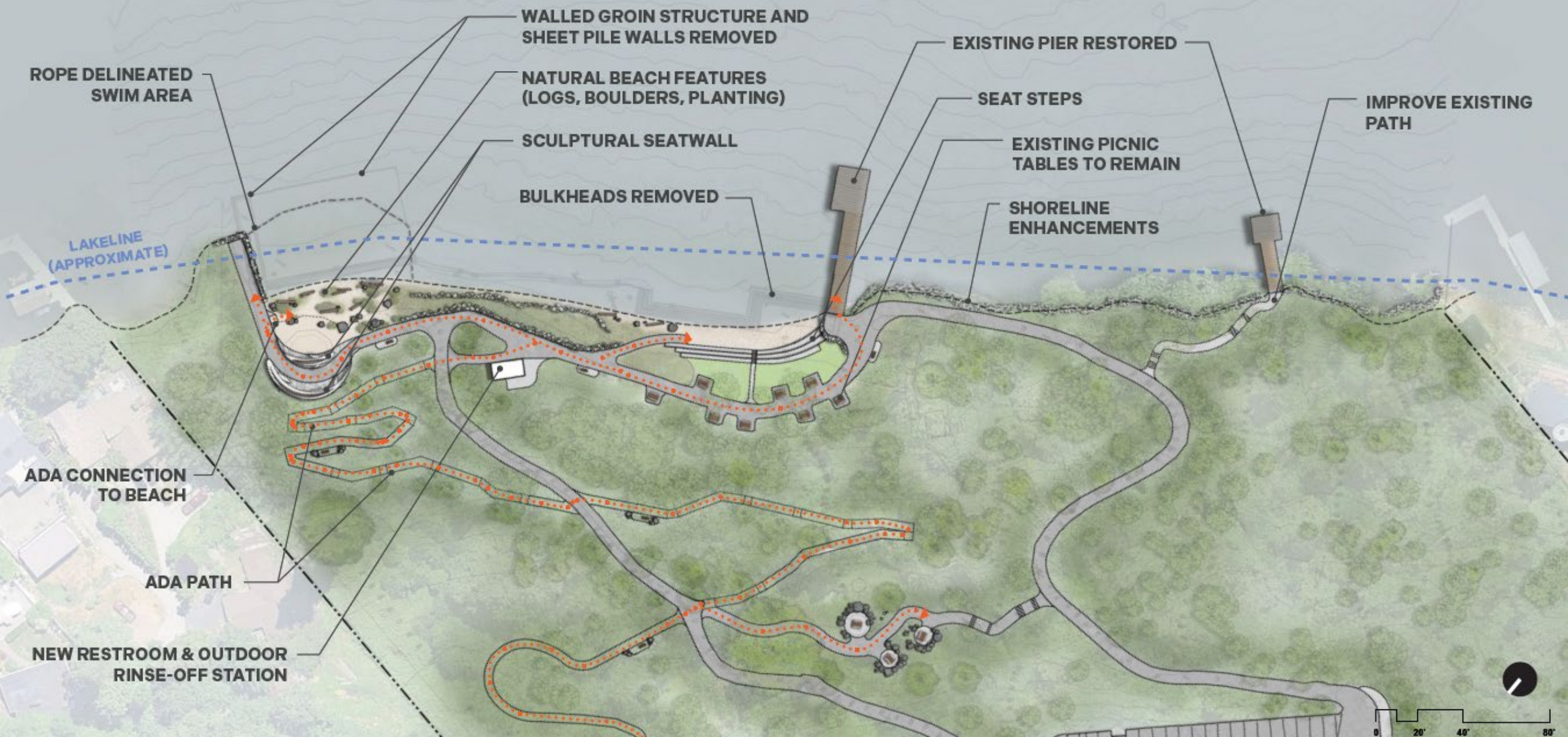


Preferred Plan – Overall Plan



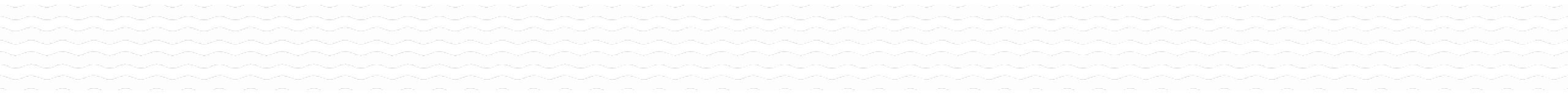
Preferred Plan – Shoreline Enlargement

◀▶▶▶ ADA ACCESSIBLE ROUTE





Groveland Beach Park Preferred Plan



Preferred Plan – Overall Plan

◀▶▶▶ ADA ACCESSIBLE ROUTE



NEW PIER STRUCTURE

BULKHEAD REMOVED

SEAT STEPS

GRASS AREA

EXISTING TREE TO REMAIN

TEEN HANGOUT SPACE
(TO BE BE FURTHER DESIGNED)

EXISTING FENCE TO REMAIN

ADA ACCESSIBLE, NATURE-INSPIRED
UPLAND PLAY AREA

IMPROVE & EXPAND SECONDARY
PATH TO BEACH

MAINTAIN EXISTING PATH

POTENTIAL RESTORATION PLANTING

UPDATED / IMPROVED RESTROOM

EXISTING RETAINING WALL
TO REMAIN

POTENTIAL ADA ACCESSIBLE
BOARDWALK WITH OVERLOOK

PROPERTY LIMIT

SE 57TH ST

80TH AVE SE

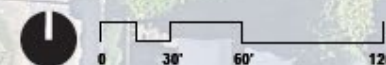
DEERFORD RD

DEERFORD RD

WAYFINDING
SIGNAGE AT ROAD
AND PARKING
ENTRY

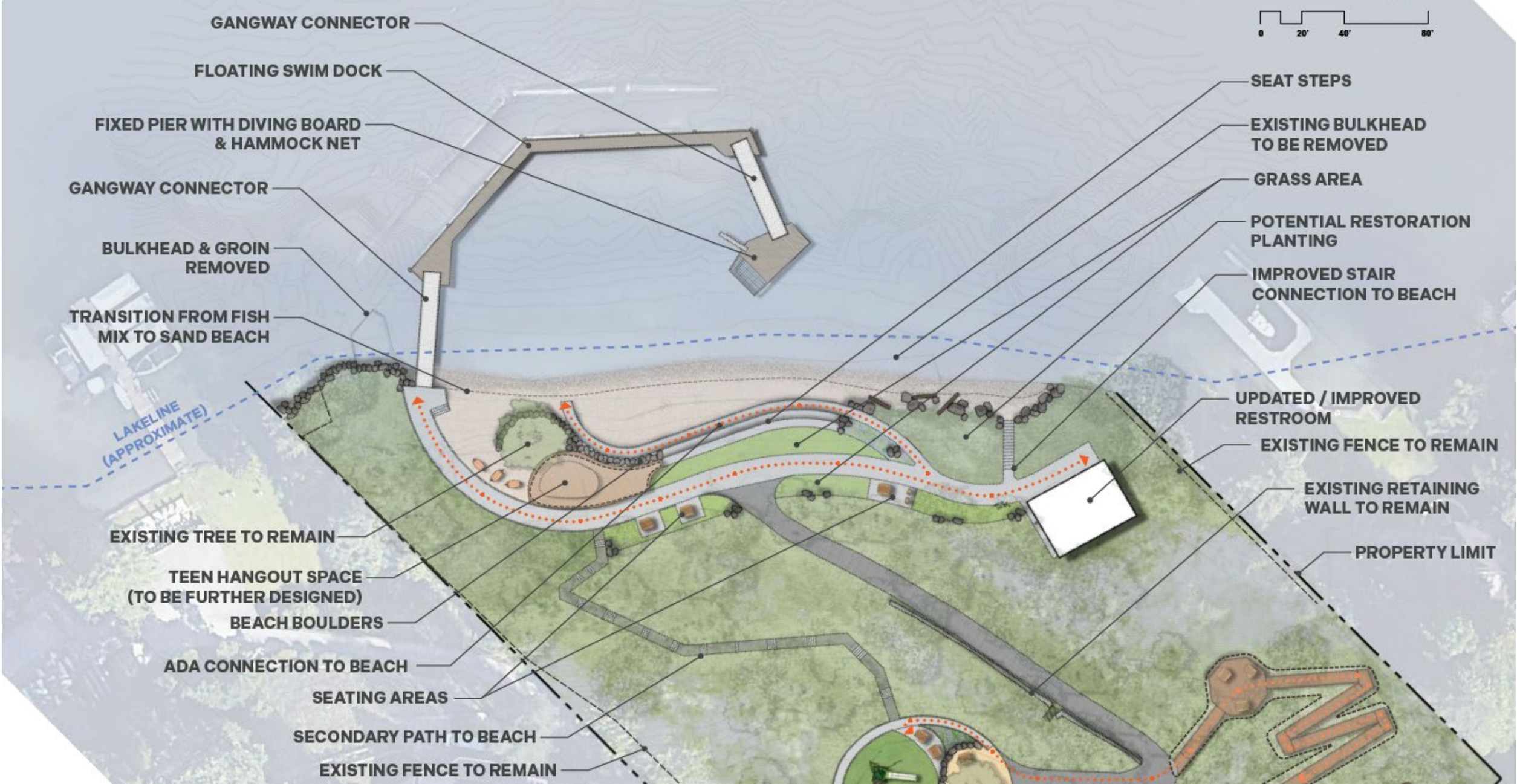
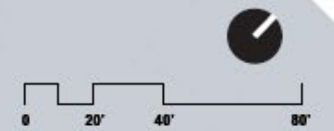
MITCHELL ST

LAKELINE
(APPROXIMATE)



Preferred Plan – Shoreline Enlargement

◀▶▶▶ ADA ACCESSIBLE ROUTE



GANGWAY CONNECTOR

FLOATING SWIM DOCK

FIXED PIER WITH DIVING BOARD & HAMMOCK NET

GANGWAY CONNECTOR

BULKHEAD & GROIN REMOVED

TRANSITION FROM FISH MIX TO SAND BEACH

LAKELINE (APPROXIMATE)

EXISTING TREE TO REMAIN

TEEN HANGOUT SPACE (TO BE FURTHER DESIGNED)

BEACH BOULDERS

ADA CONNECTION TO BEACH

SEATING AREAS

SECONDARY PATH TO BEACH

EXISTING FENCE TO REMAIN

SEAT STEPS

EXISTING BULKHEAD TO BE REMOVED

GRASS AREA

POTENTIAL RESTORATION PLANTING

IMPROVED STAIR CONNECTION TO BEACH

UPDATED / IMPROVED RESTROOM

EXISTING FENCE TO REMAIN

EXISTING RETAINING WALL TO REMAIN

PROPERTY LIMIT



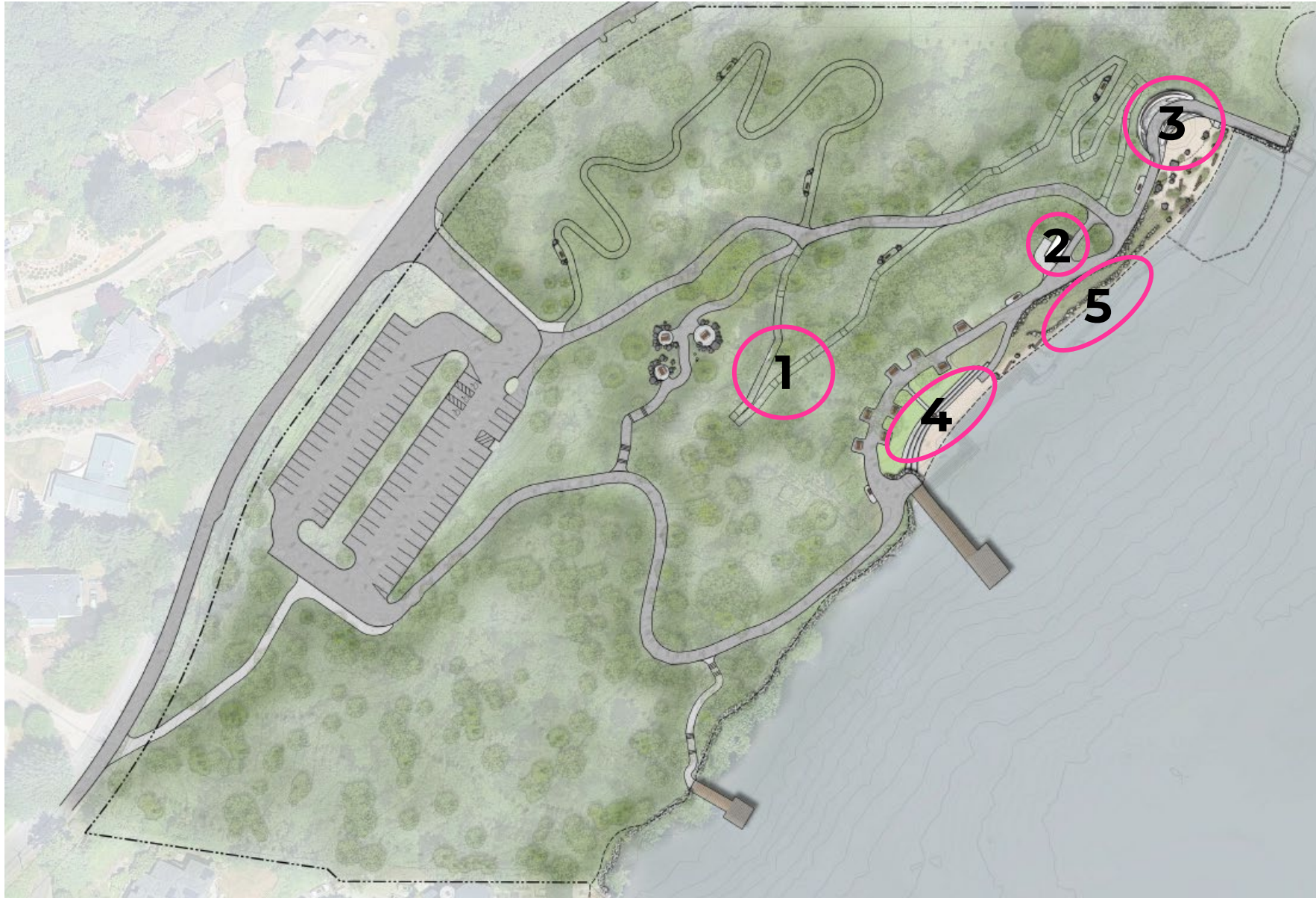
Public Art Integration - Opportunities



Discussion

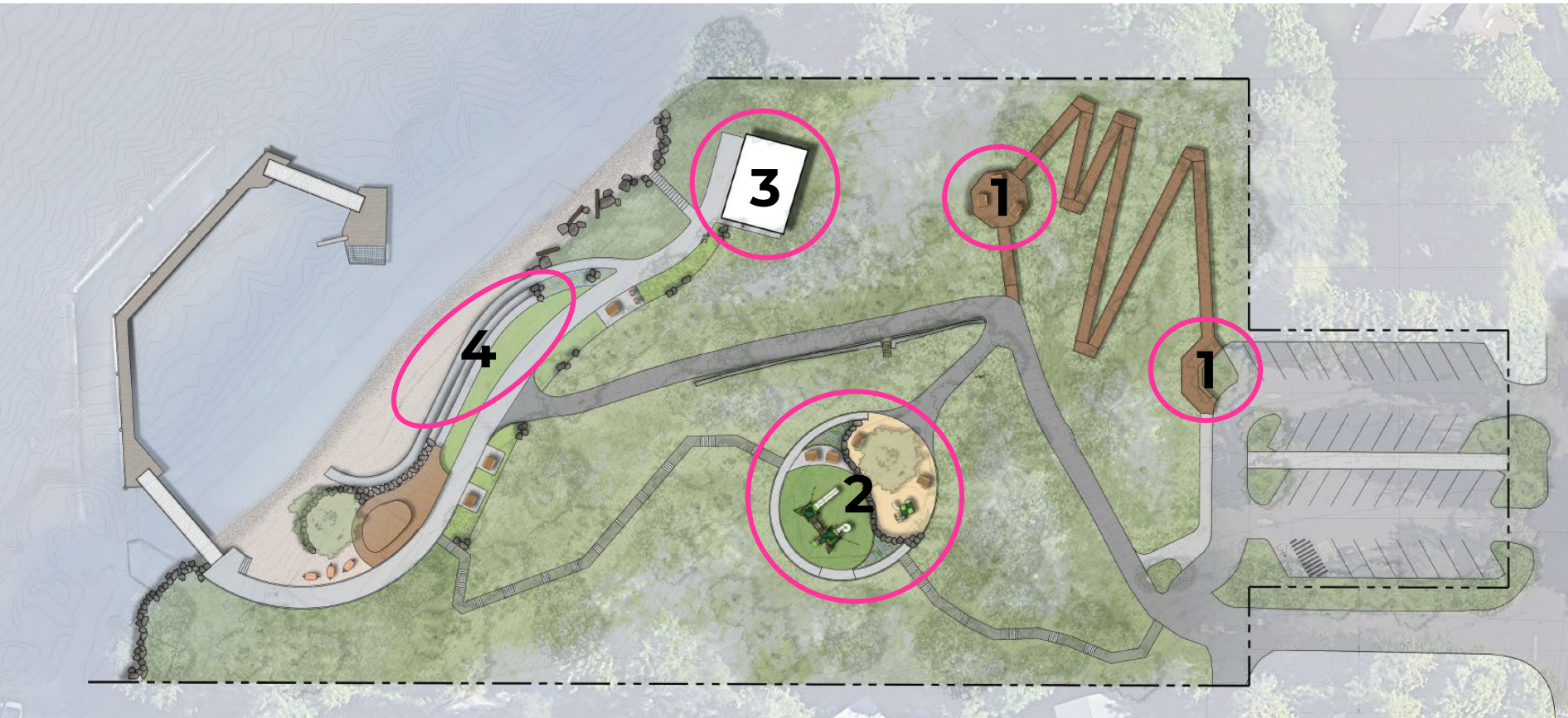
- Future capital projects that result from the Joint Infrastructure Plan will include 1% for Art contributions.
- Staff **seek input on preferred public art integration opportunities** to document in the final Joint Infrastructure Plan.
- The Arts Council and community will be reengaged on specific public art opportunities as future capital projects for Clarke and Groveland Beach Parks are developed.

Public Art Opportunity Areas – Clarke Beach



1. ADA path to waterfront
2. Restroom building
3. North Beach seating area
4. Central Beach seating area
5. Restored natural shoreline

Public Art Opportunity Areas – Groveland Beach



1. Tree canopy boardwalk
2. Renovated play area
3. Restroom facility
4. Central Beach area

Public Art Opportunities – Themes

- Nature / forest character of the parks
- Ecological functions of the shorelines
- Community connection to Groveland Beach / history of the parks
- Blue restroom buildings as landmarks



Public Art Opportunities – Project Types

Directional & Interpretive Elements



Public Art Opportunities – Project Types

Functional Site Elements



Public Art Opportunities – Project Types

Integrated Media





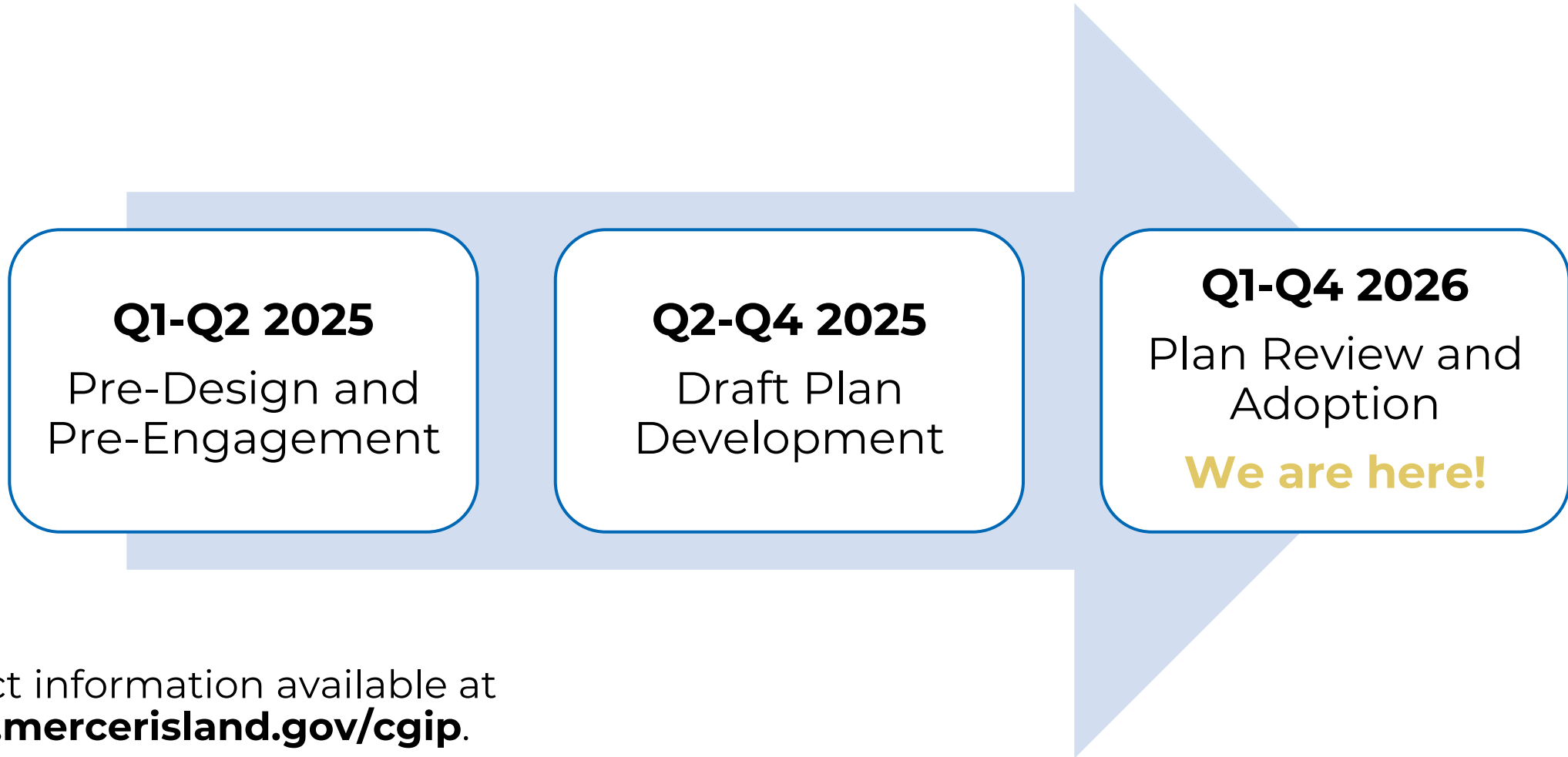
Next Steps



Next Steps

1. Staff will document the Arts Council's input on preferred public art integration opportunities in the final Joint Infrastructure Plan.
2. The Arts Council and community will be reengaged on specific public art opportunities as future capital projects for Clarke and Groveland Beach Parks are developed.

Project Schedule



Project information available at
www.mercerisland.gov/cgip.



Thank You!

