



Clarke & Groveland Beach Parks Joint Infrastructure Plan



PRC 26-08 | March 26, 2026



Meeting Agenda

- Project Background
- Groveland Beach Park
 - Concept Alternatives – Community Survey Results
 - Preferred Plan
 - MI Student Engagement
 - Discussion
- Clarke Beach Park
 - Concept Alternatives – Community Survey Results
 - Preferred Plan
 - Discussion
- Next Steps

Purpose

The purpose of this presentation is to update the Parks & Recreation Commission on the development of a Joint Infrastructure Plan for Clarke and Groveland Beach Parks and discuss the following:

1. Does the preferred plan for each park reflect the City Council's priorities and the community's preferences? Are there any gaps or adjustments needed?
2. Based on the youth and teen engagement conducted to date, does the Commission recommend adding the sand volleyball court to the preferred plan for Groveland Beach Park?
3. Does the preferred plan for each park support the goal of providing equitable access to amenities across all waterfront parks?
4. Does the preferred plan for each park establish a clear vision for infrastructure improvements?

Community Input on the Preferred Plans

The community is encouraged to review the preferred plans and share their final thoughts during the Parks and Recreation Commission's review! Here are a few ways to provide input on the preferred plans:

1. Review the preferred plans and leave a comment on Let's Talk at [**www.mercerisland.gov/cgip**](http://www.mercerisland.gov/cgip).
2. Provide public comment to the Parks and Recreation Commission through June 4, 2026, either via written comments or during the June 4 Regular Meeting.
3. Send comments to Sarah Bluvas, CIP Project Manager, via e-mail at [**sarah.bluvas@mercerisland.gov**](mailto:sarah.bluvas@mercerisland.gov).

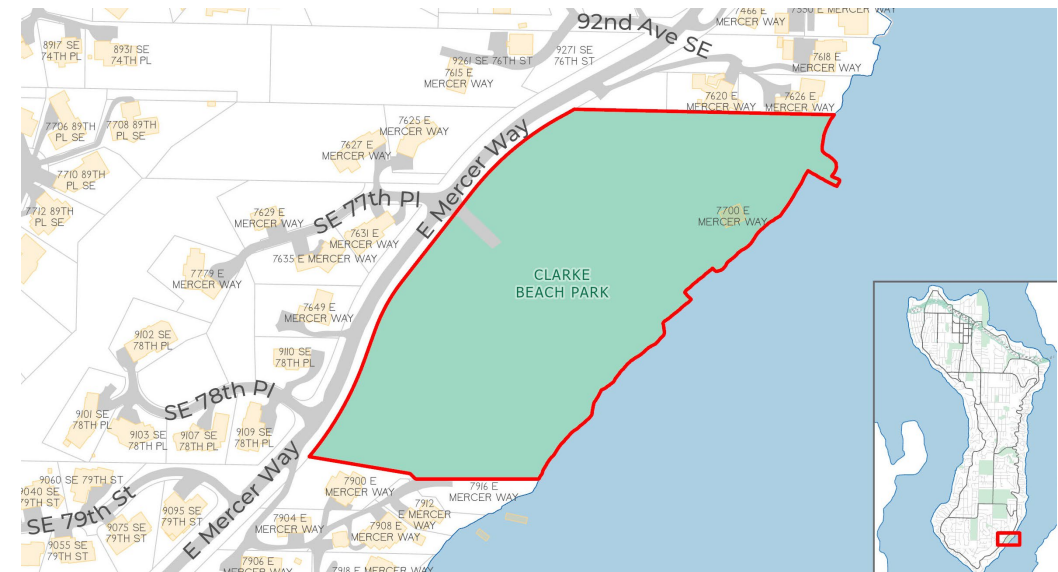
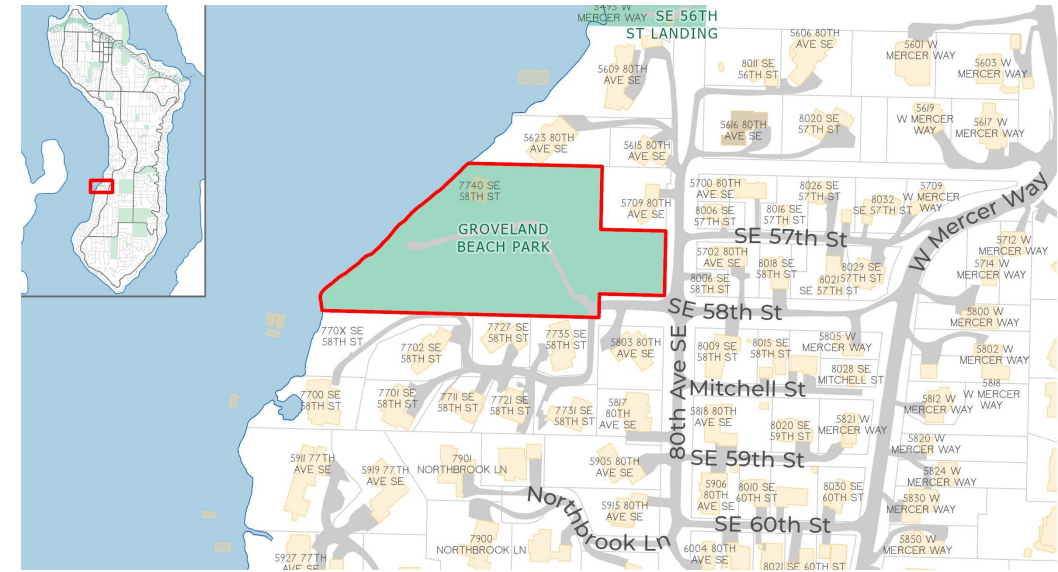


Background



Project Context

- Parks originally developed in the 1960s & 1970s.
- Both feature aging over-water and upland infrastructure that needs to be repaired or replaced soon.
- City Council approved joint planning effort in 2022 to prioritize capital projects and navigate strict permitting environment for shoreline projects.
- City began the planning effort in 2023.



Early Site Assessment

In-Water Structures

- Groveland Beach: The overall condition of the in-water structures is fair, but degradation is evident.
- Clarke Beach: Structures have reached the end of their useful life, including degradation of the concrete stairs, timber piles, and sheet pile wall.

Geotechnical + Critical Areas Review

- No wetlands or non-piped watercourses observed at either site.
- Both parks are mapped as hazardous areas, which will require additional geotechnical study during future design phases.
- Primary concerns include soil settlement in the upland areas and beach settlement/waterfront erosion.

Restroom Accessibility

Restroom facilities at both parks are functional but are non-compliant with several ADA guidelines.

City Council Priorities

Based on the analysis of existing conditions, the City Council approved staff's recommendation to develop a **Joint Infrastructure Plan** for Clarke and Groveland Beach Parks.

The Joint Infrastructure Plan will prioritize:

- Repair/replacement of overwater structures
- Shoreline erosion control and stabilization
- Accessibility improvements

Other amenities, such as restrooms, wayfinding/signage, and parking, may be addressed if resources allow.

What is a Park Infrastructure Plan?

	Park Master Plan	Park Infrastructure Plan
Planning Horizon	Long-term (20+ years)	Near-term (10-12 years)
Scope	Provides a broad and high-level framework to guide park projects.	Identifies and prioritizes specific park renovations/repairs for immediate implementation.
Focus of Community Input	Visionary – <i>What should the park be in the future?</i>	Practical and focused on needs for existing infrastructure and uses. <i>What does the park need now?</i>
Output	Conceptual designs and goals for future project development.	Schematic design and cost estimate to initiate design development.



Groveland Beach Park



Community Input: Waterfront Amenities

- **Sand volleyball court**

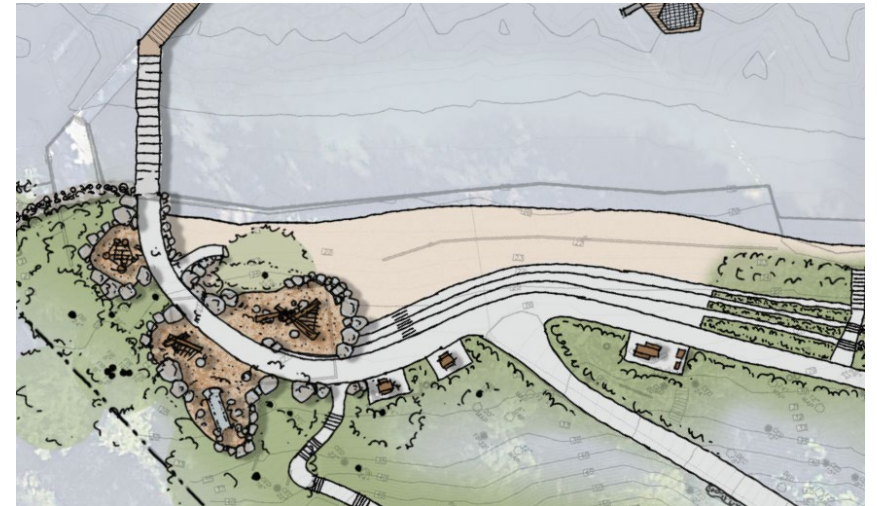
- 32% had no preference on removing or maintaining it.
- Removing it was slightly more popular than improving it (27% vs. 25%).

- **Restroom facility:** An outdoor rinse-off station was the highest priority (127 responses). Changing rooms and small lockers were less important.

- **Beach and gathering area:** Prefer large grass terraces and picnic pockets (concepts 1 and 2), although interest across all three concepts was fairly evenly split.



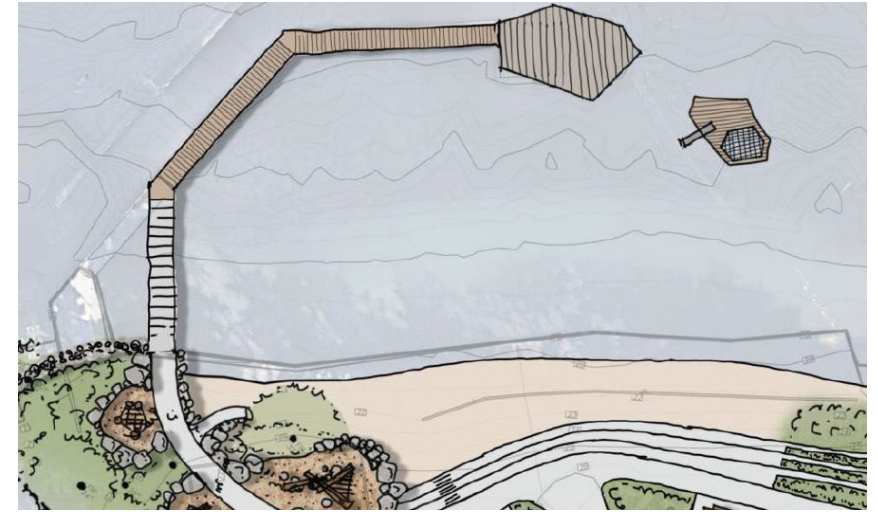
Concept 1 – Picnic Area



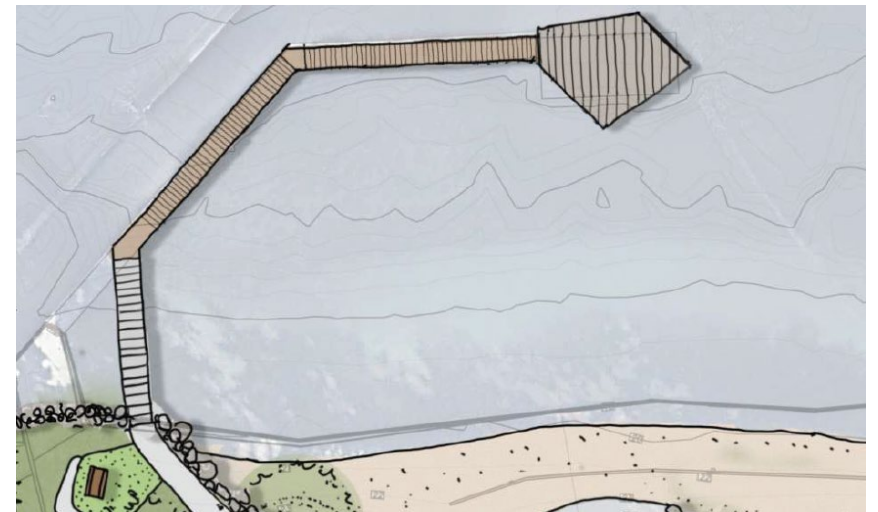
Concept 2 – Picnic Area

Community Input: Dock Configuration

- While descriptions for concepts 2 and 3 were initially swapped, **80% prefer a dock with an expanded swim platform.**
- 54% prioritize adding a detached floating dock based on the survey images.



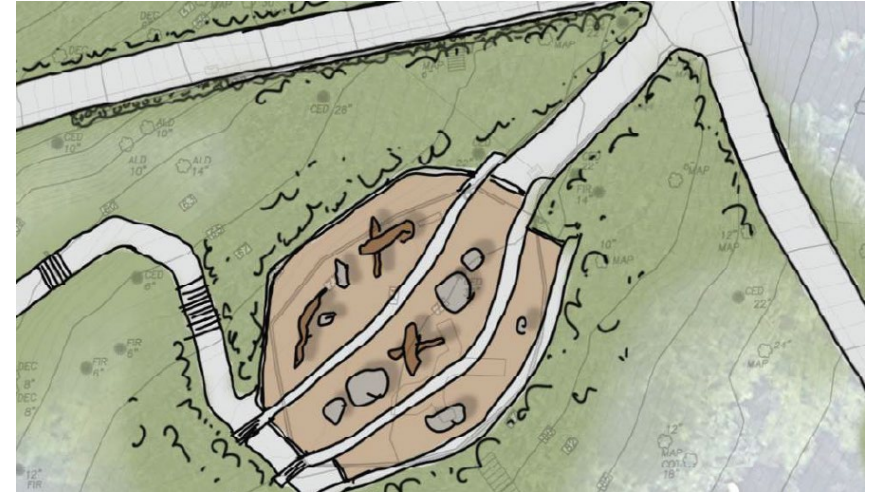
Concept 2 – Dock Configuration



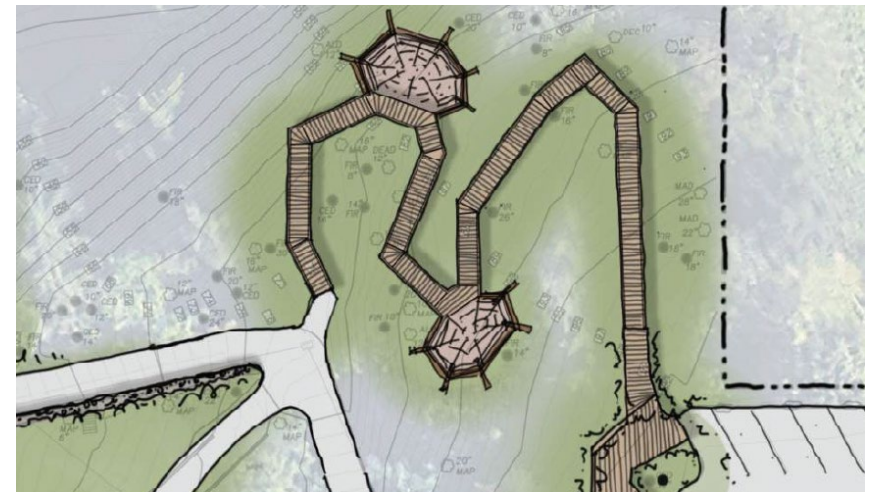
Concept 3 – Dock Configuration

Community Input: Upland Improvements

- **Play area and seating:** 42% prefer upgrading the existing play area and adding more upland seating (concept 3).
- **Tree canopy boardwalk vs. viewing deck:** 63% prioritize other upland improvements before adding either feature, with slightly more preference for a tree canopy boardwalk.



Concept 3 – Upland Improvements



Concept 2 – Tree Canopy Boardwalk

Community Priorities for Groveland Beach



Preferred Plan – Overall Plan

◀▶▶▶ ADA ACCESSIBLE ROUTE



NEW PIER STRUCTURE

BULKHEAD REMOVED

SEAT STEPS

GRASS AREA

EXISTING TREE TO REMAIN

TEEN HANGOUT SPACE
(TO BE BE FURTHER DESIGNED)

EXISTING FENCE TO REMAIN

ADA ACCESSIBLE, NATURE-INSPIRED
UPLAND PLAY AREA

IMPROVE & EXPAND SECONDARY
PATH TO BEACH

MAINTAIN EXISTING PATH

POTENTIAL RESTORATION PLANTING

UPDATED / IMPROVED RESTROOM

EXISTING RETAINING WALL
TO REMAIN

POTENTIAL ADA ACCESSIBLE
BOARDWALK WITH OVERLOOK

PROPERTY LIMIT

SE 57TH ST

80TH AVE SE

DEERFORD RD

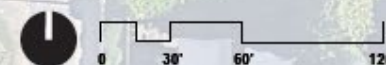
DEERFORD RD

WAYFINDING
SIGNAGE AT ROAD
AND PARKING
ENTRY

MITCHELL ST

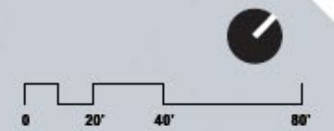
DEERFORD RD

LAKELINE
(APPROXIMATE)



Preferred Plan – Shoreline Enlargement

◀▶▶▶ ADA ACCESSIBLE ROUTE



GANGWAY CONNECTOR

FLOATING SWIM DOCK

FIXED PIER WITH DIVING BOARD & HAMMOCK NET

GANGWAY CONNECTOR

BULKHEAD & GROIN REMOVED

TRANSITION FROM FISH MIX TO SAND BEACH

LAKELINE (APPROXIMATE)

EXISTING TREE TO REMAIN

TEEN HANGOUT SPACE (TO BE FURTHER DESIGNED)

BEACH BOULDERS

ADA CONNECTION TO BEACH

SEATING AREAS

SECONDARY PATH TO BEACH

EXISTING FENCE TO REMAIN

SEAT STEPS

EXISTING BULKHEAD TO BE REMOVED

GRASS AREA

POTENTIAL RESTORATION PLANTING

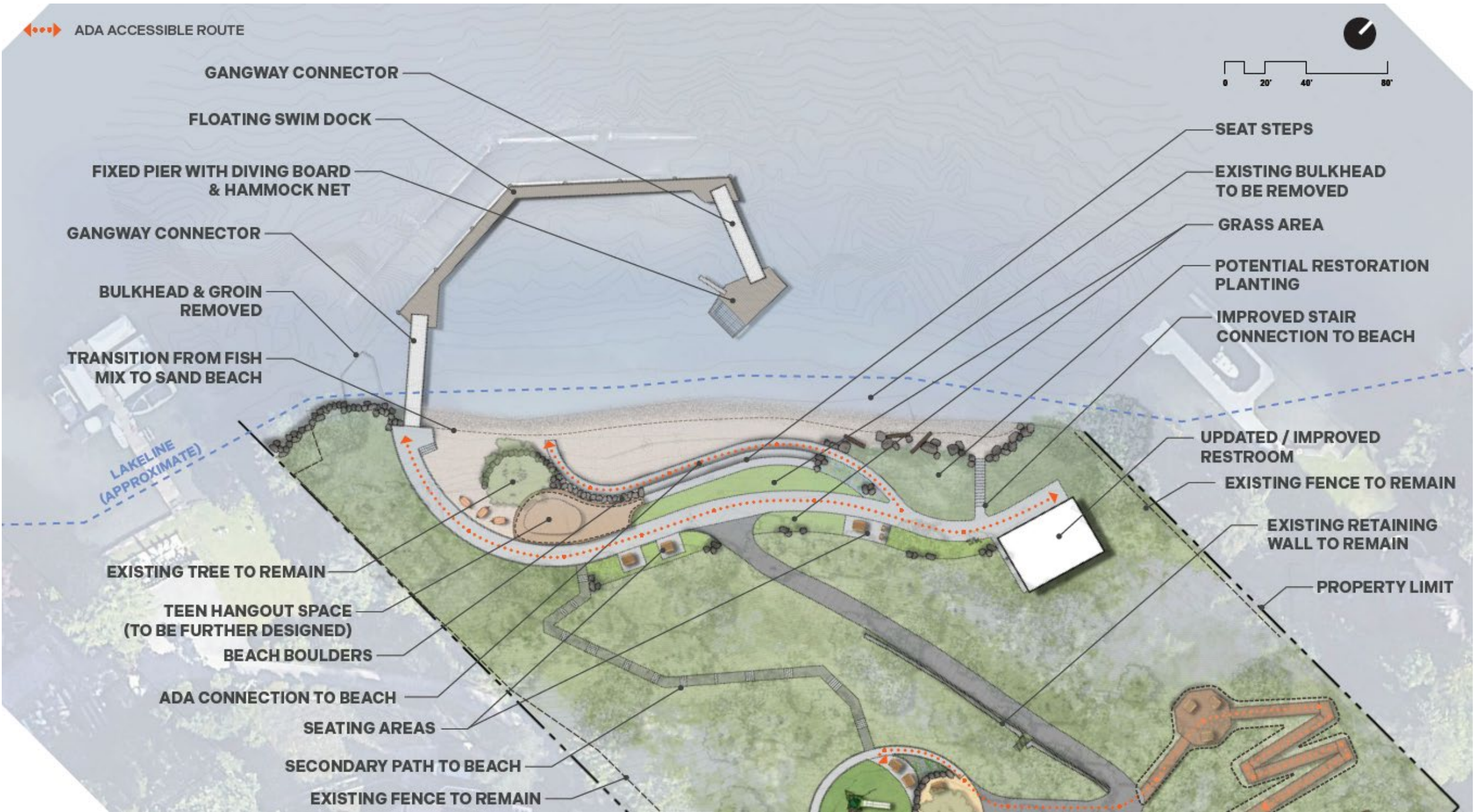
IMPROVED STAIR CONNECTION TO BEACH

UPDATED / IMPROVED RESTROOM

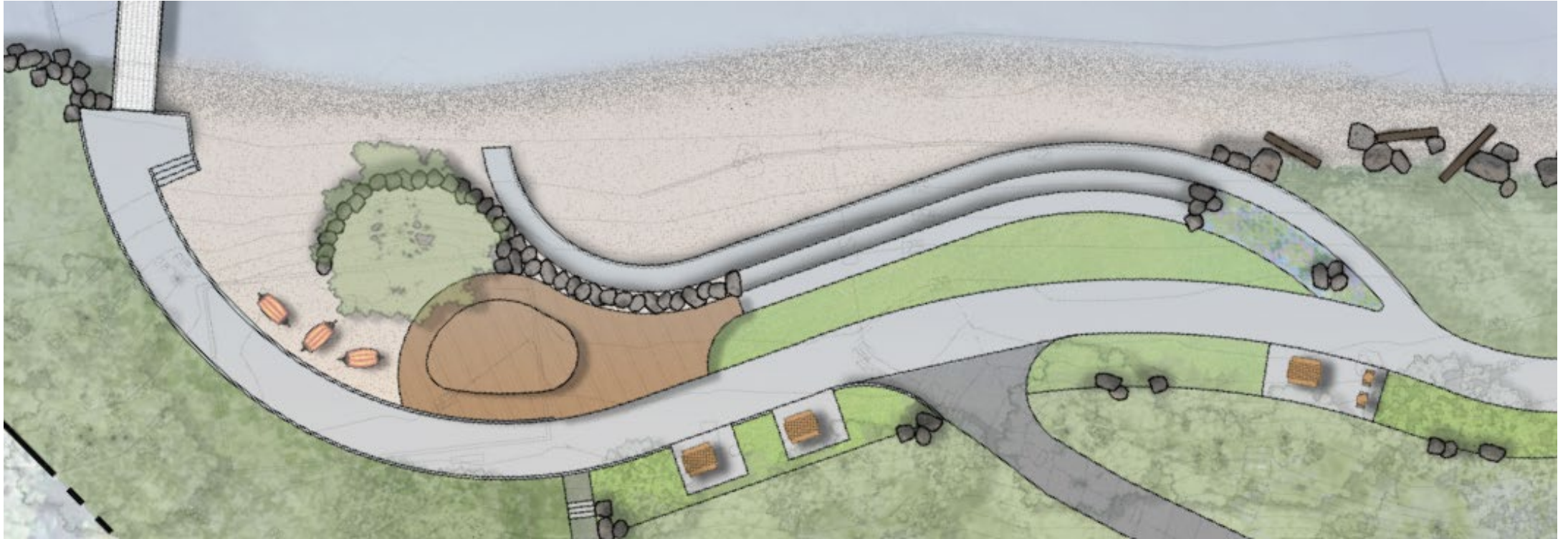
EXISTING FENCE TO REMAIN

EXISTING RETAINING WALL TO REMAIN

PROPERTY LIMIT



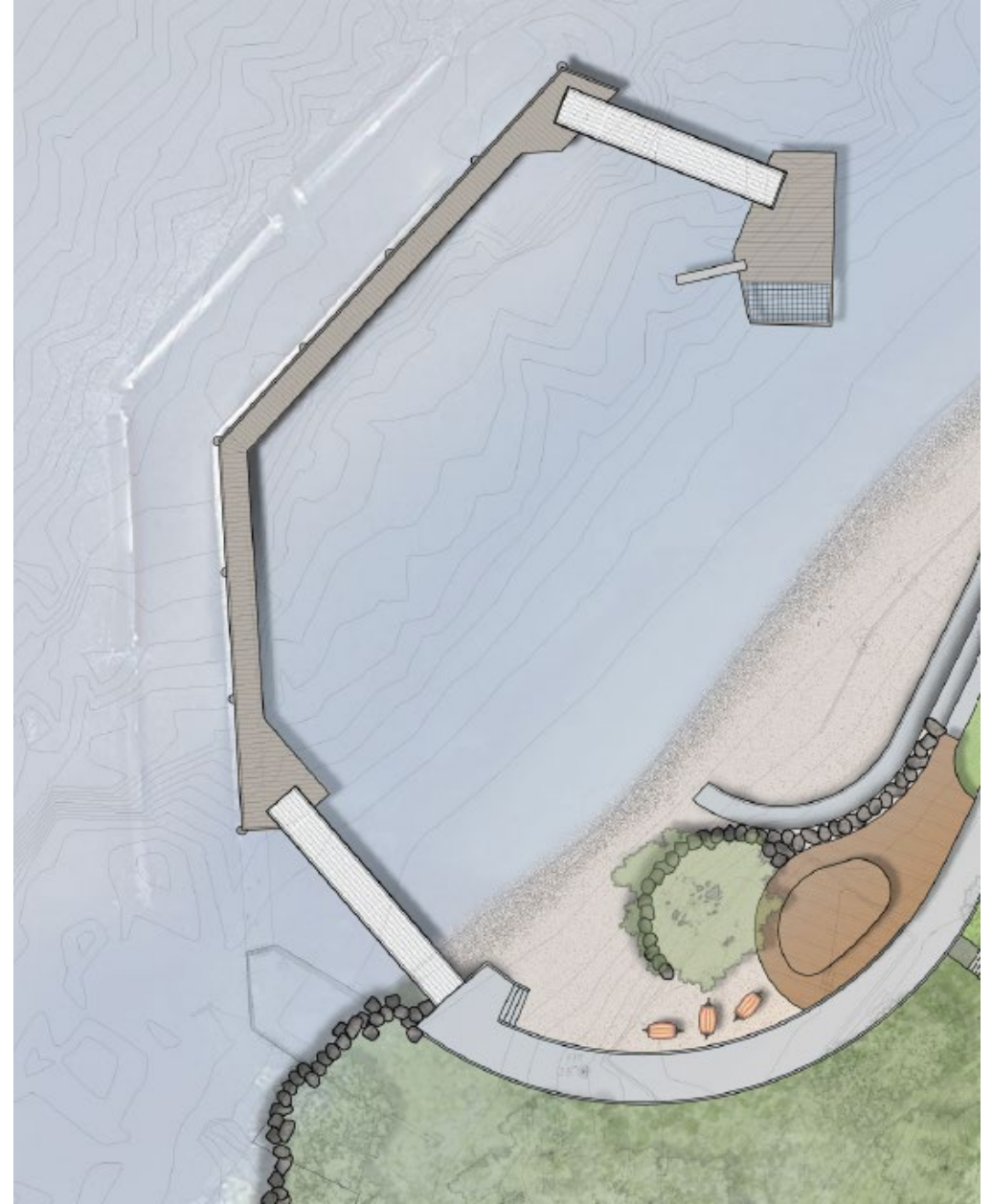
Preferred Waterfront Improvements



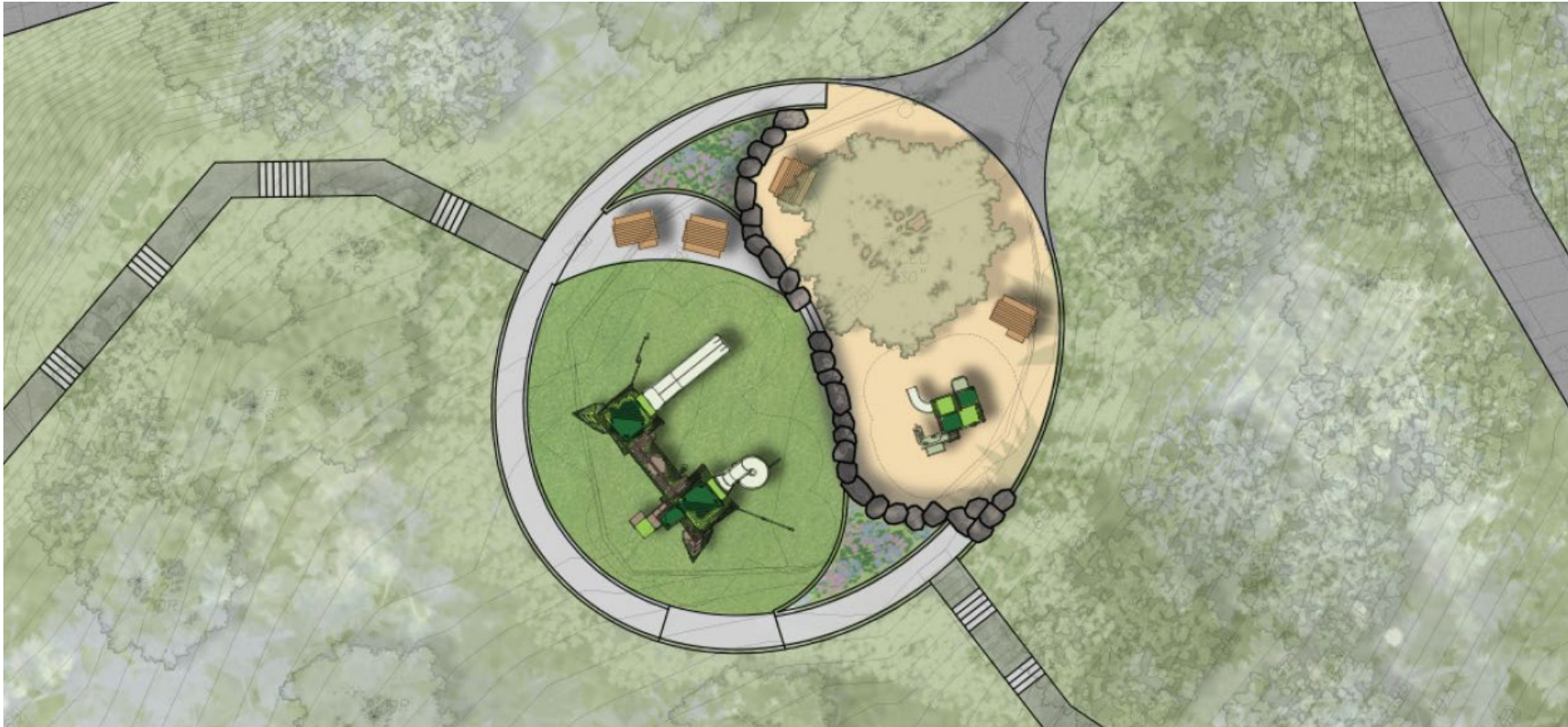
- Sand beach and naturalized shoreline
- Ample lawn space and picnic areas
- Terraced seating
- Accessible path along waterfront and to beach
- Designates a teen gathering space for future design

Preferred Dock Configuration

- Replaces existing pier with new structure
- New dock expands space for circulation, gathering, and swimming
- Semi-detached hangout platform with an oversized hammock



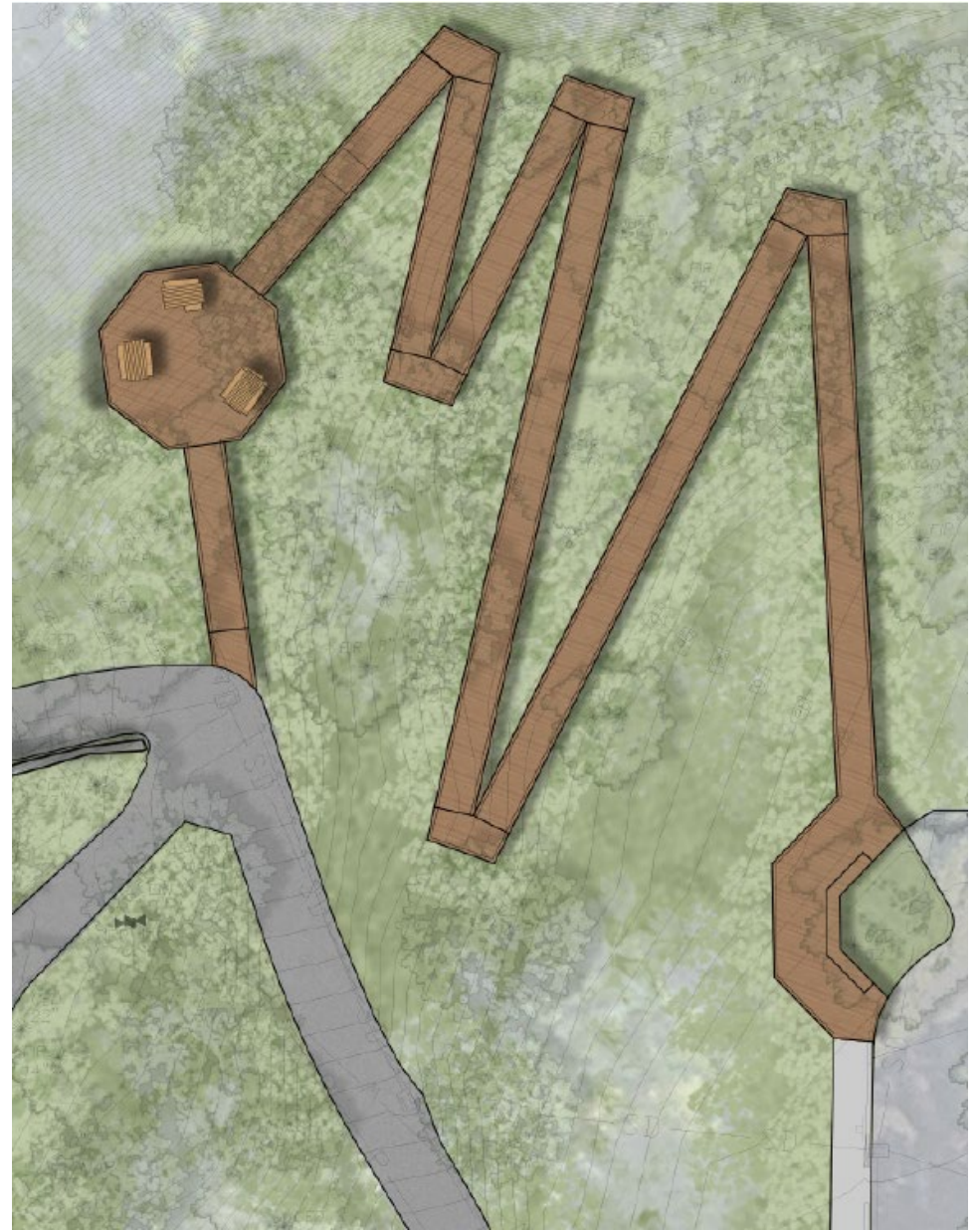
Preferred Upland Improvements



- Renovated play area
- Play structures will support multiple age groups
- ADA ramp connects upper and lower play areas
- Accessible picnic tables
- Play area surfacing combination of poured-in-place and artificial turf

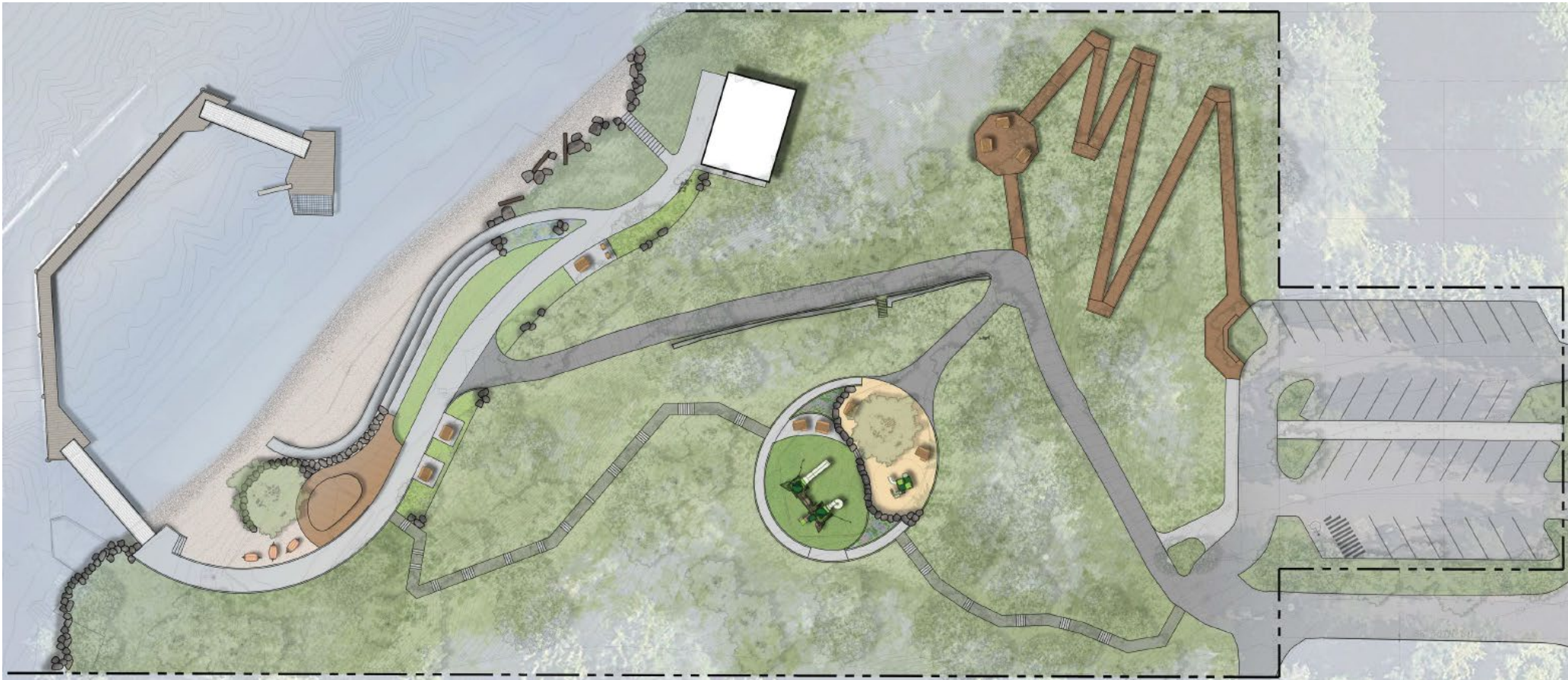
Potential Tree Canopy Boardwalk

- ADA-accessible boardwalk to be further evaluated in a future design phase
- Accessible path from parking lot to viewing deck and play area
- Viewpoint platforms at the landings along the boardwalk
- Accessible picnic tables in viewing deck



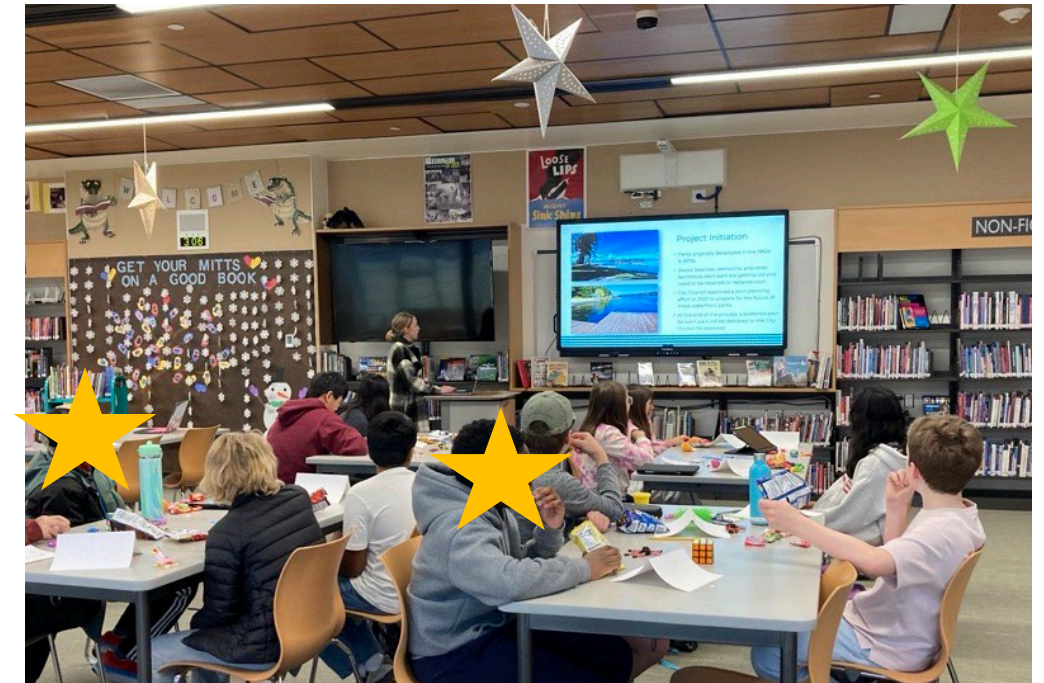
Planning Level Cost Estimate for Construction

The cost estimate range for construction at this planning stage is **\$8 to \$10 million**.



Engagement with Mercer Island Youth/Teens

- From October 2025 to March 2026, staff conducted outreach to Mercer Island youth and teens to solicit more feedback for Groveland Beach.
- Engagement activities included:
 - Met with Islander Middle School students from the Principal's Student Advisory on December 11
 - Met with Mercer Island High School students on March 3
 - Launched a teens-only online survey about Groveland Beach on March 3
 - Promoted the project and survey on *Breakfast on the Bridge* on March 17



IMS students learned about the project and provided feedback on December 11, 2025.

Feedback from IMS Students

- Groveland used for variety of activities – Swimming, playground use, jumping from the dock, and playing on the sand volleyball court.
- Beach materials – Sandy beach is good for sandcastles but is kind of dirty. Gravel hurts kids' feet.
- Waterfront – The concrete wall is uncomfortable to climb/sit on; make it more comfortable or remove it.
- Docks – Condition isn't great. See older kids jump from railings into the water.
- Hangout opportunities – Nature play and the overwater hammock well liked.



Examples of hangout spaces shared with IMS students.

Results of Teens-Only Survey

- Available March 3 to March 20
- 125 responses
- 17% use the park daily or weekly and 38% use it occasionally.
 - 5% of “other” responses noted using the park more in the summer.
- 56% prefer to renovate the sand volleyball court in its current location.
- 53% would like a new court built at another Mercer Island park if the one at Groveland Beach is removed.



An online survey for teens-only asked questions about the sand volleyball court and other hangout opportunities at Groveland Beach.

Ideas for Hangout Opportunities

The survey presented ideas for a designated hangout space at Groveland Beach and asked respondents to rank the ideas

Overall Ranking for Ideas

1. Group hammocks
2. Swings
3. Hangout platform
4. Hillside deck
5. Pavilion
6. Climbing/lounging structure
7. Stone seating

Swings



Climbing/Lounging Structure



Group Hammocks



Hangout Platform



Hillside Deck



Pavilion



Stone Seating



Discussion

1. Does the preferred plan for Groveland Beach Park reflect the City Council's priorities and the community's preferences? Are there any gaps or adjustments needed?
2. Based on the youth and teen engagement conducted to date, does the Commission recommend adding the sand volleyball court back to the preferred plan for Groveland Beach Park?
3. Does the preferred plan support the goal of providing equitable access to amenities across all waterfront parks?
4. Does the preferred plan establish a clear vision for infrastructure improvements at Groveland Beach Park?



Clarke Beach Park



Community Input: ADA Accessibility

- **Accessible path to waterfront:** 62% say very or somewhat important.
- **Connecting waterfront amenities:** 64% say very or somewhat important.



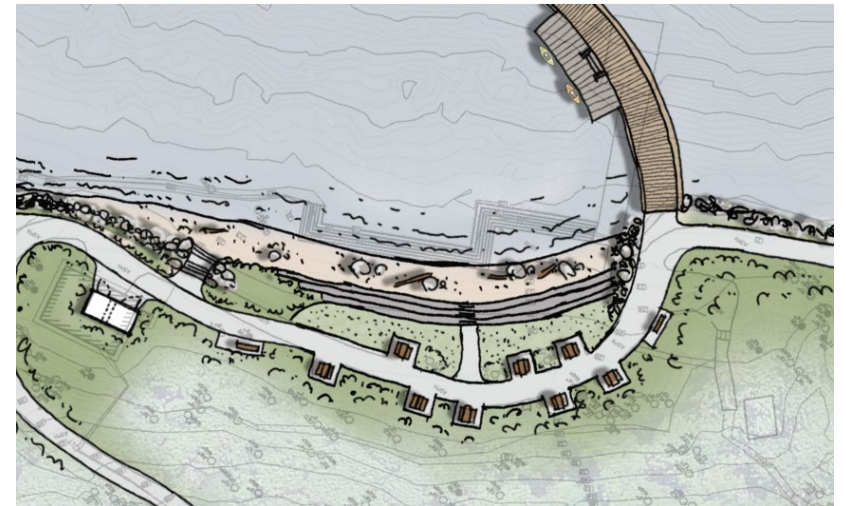
Concept 1 for Clarke Beach included an accessible path from the parking lot to the waterfront and accessible connections between amenities.

Community Input: Waterfront Amenities

- **North Waterfront:** 50% prefer terraced seating and a large natural beach at the north end (concept 1).
 - Although all concepts removed the enclosed swimming area, many requested keeping swimming access at Clarke
- **Central Waterfront:** About 44% prefer a combination of large flat grass area, tiered concrete seating, and natural waterfront (concept 2).



Concept 1 – North Waterfront



Concept 2 – Central Waterfront

Community Input: Waterfront Amenities

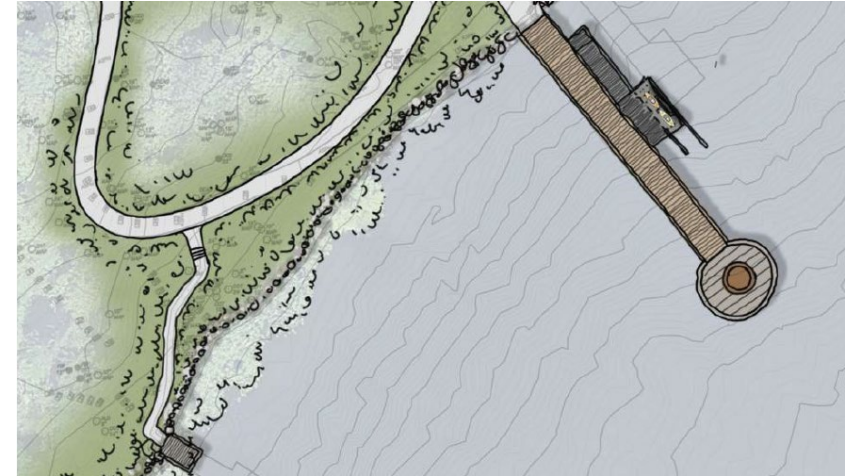
- **Small watercraft launch point:** 65% say providing a small watercraft launch point is very or somewhat important.
- **Restroom facility:** Although all concepts removed the enclosed swim area, 61% say providing a rinse-off station is very or somewhat important.



Example of a small watercraft launch point

Community Input: Pier Configuration

- Concepts 1 and 3 included a two-pier configuration, while concept 2 included a single, expanded pier configuration.
- 68% prefer concepts with two piers, either replaced (concept 1) or repaired in place (concept 3).



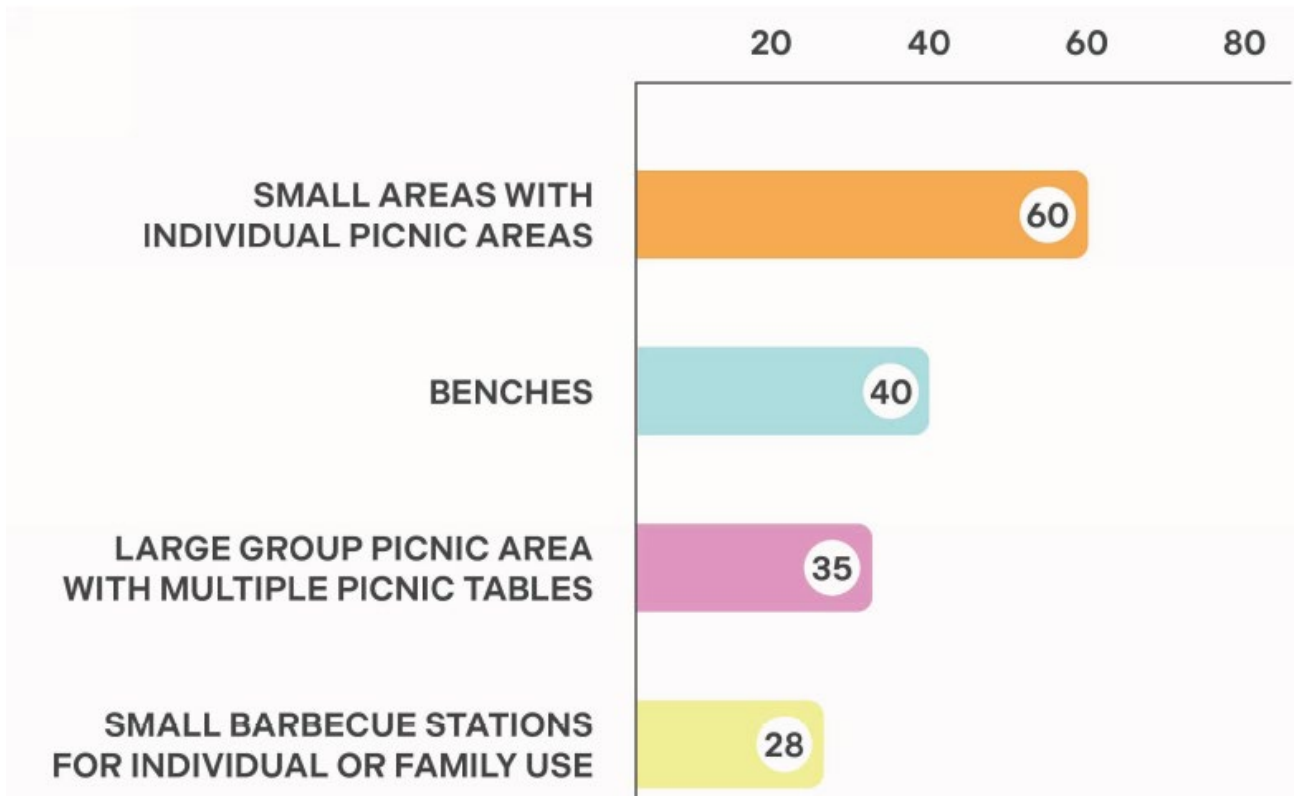
Concept 1 – Replace piers with larger central pier and a small fishing/viewing platform.



Concept 3 – Repair existing piers in place.

Community Input: Upland Improvements

For picnicking in the upland area of the park, individual or small-group experiences are preferred.

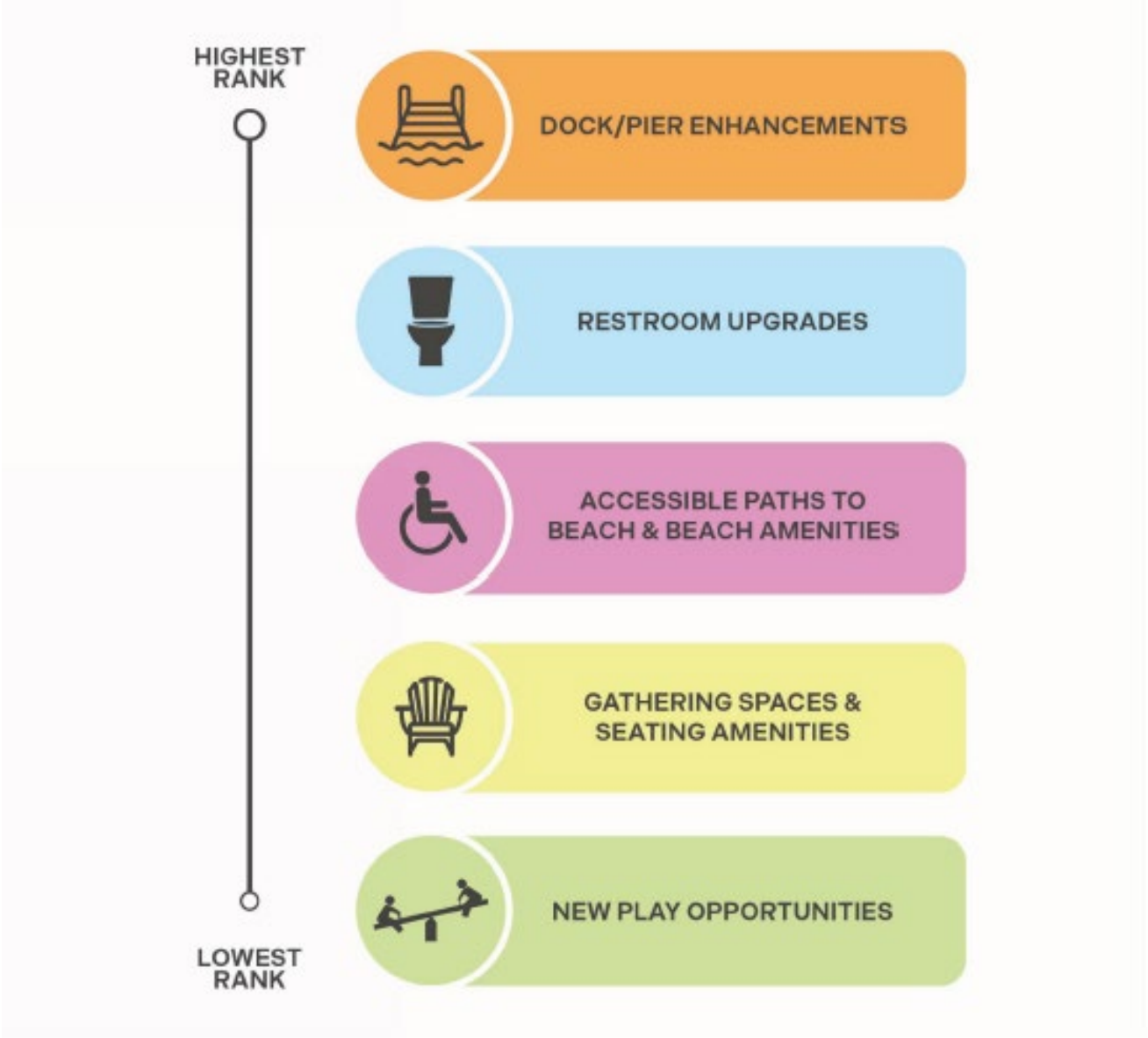


Large group picnic area

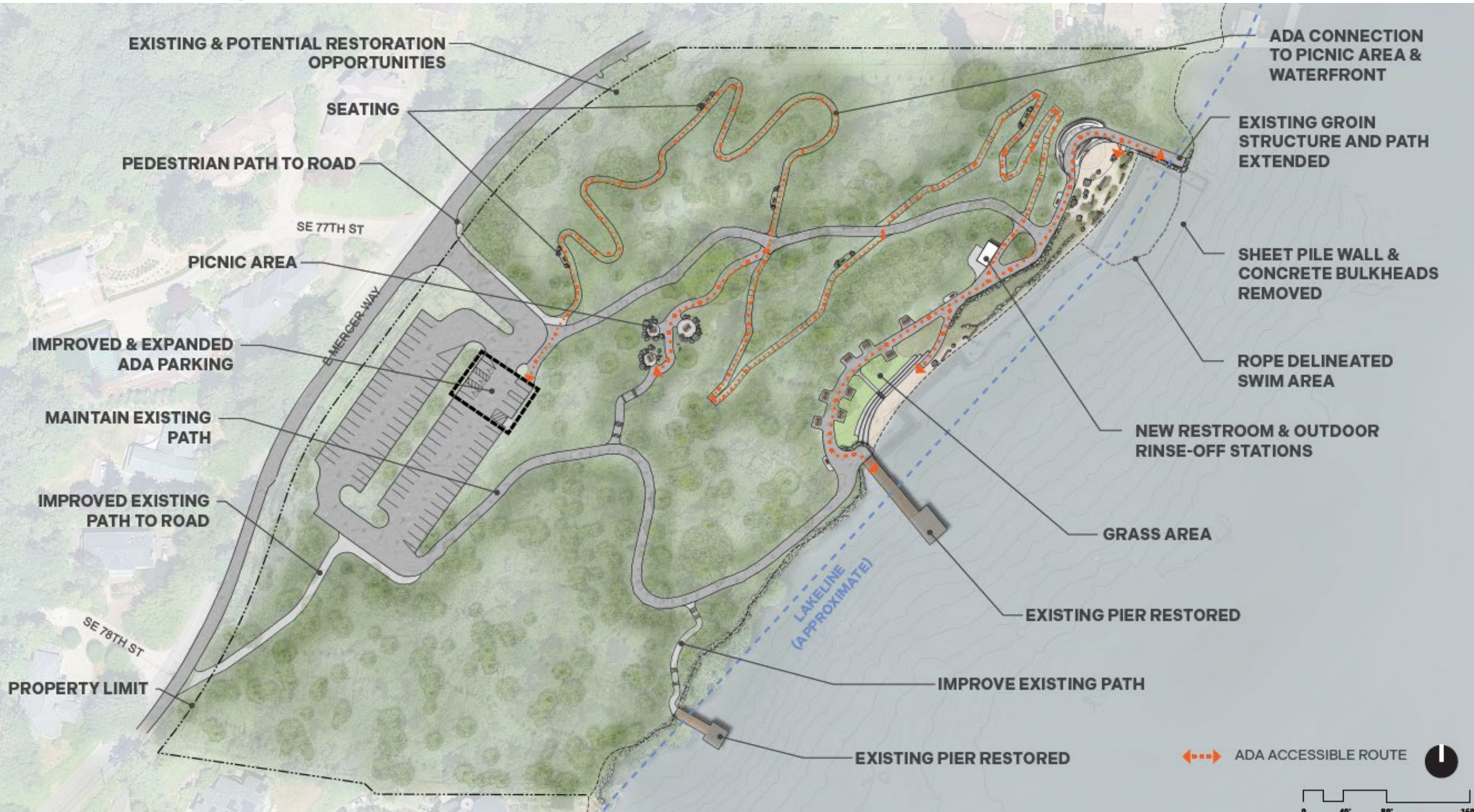


Small areas with individual picnic tables

Community Priorities for Clarke Beach

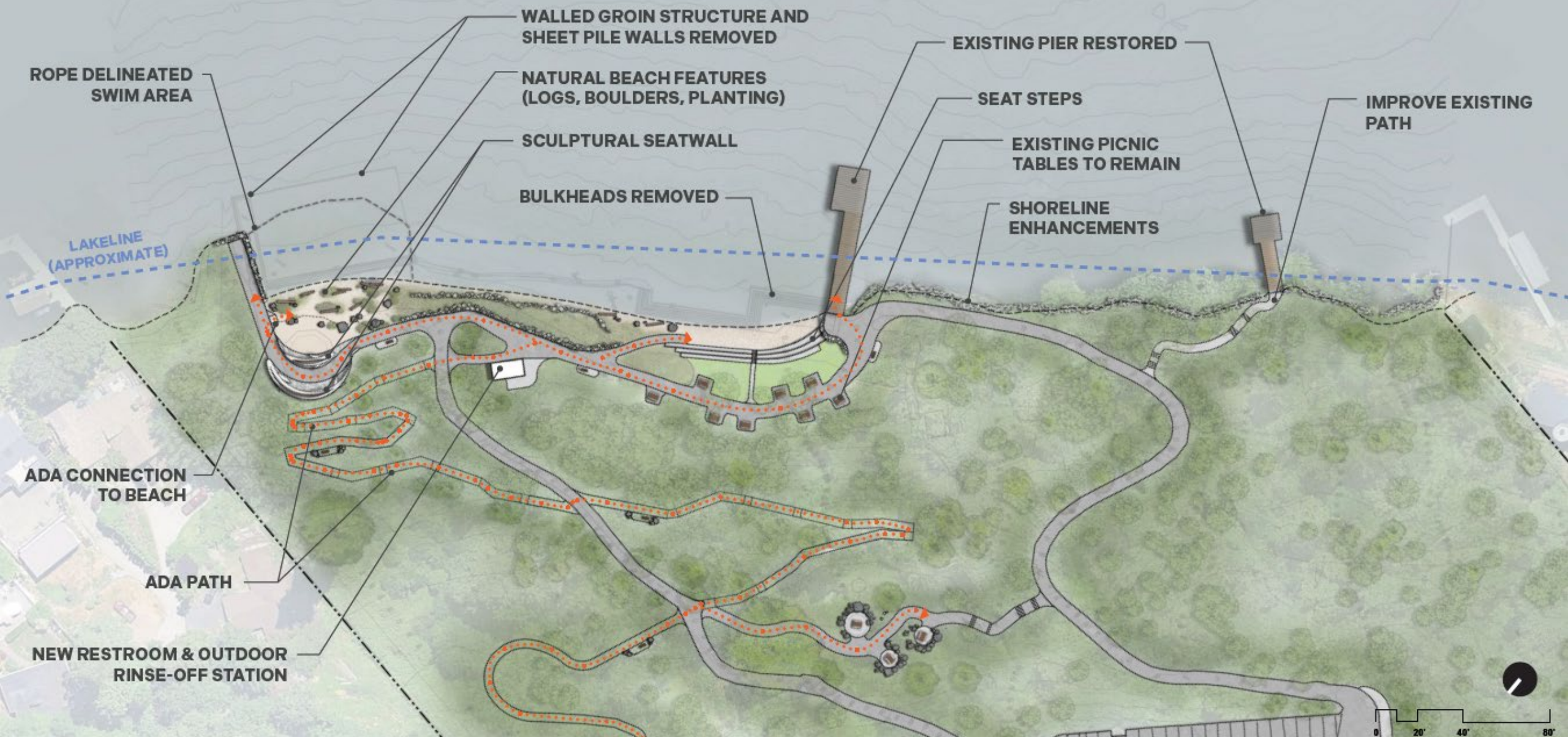


Preferred Plan – Overall Plan



Preferred Plan – Shoreline Enlargement

◀▶▶▶ ADA ACCESSIBLE ROUTE



ROPE DELINEATED SWIM AREA

WALLED GROIN STRUCTURE AND SHEET PILE WALLS REMOVED

NATURAL BEACH FEATURES (LOGS, BOULDERS, PLANTING)

SCULPTURAL SEATWALL

BULKHEADS REMOVED

EXISTING PIER RESTORED

SEAT STEPS

EXISTING PICNIC TABLES TO REMAIN

SHORELINE ENHANCEMENTS

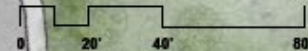
IMPROVE EXISTING PATH

LAKELINE (APPROXIMATE)

ADA CONNECTION TO BEACH

ADA PATH

NEW RESTROOM & OUTDOOR RINSE-OFF STATION



Preferred Waterfront Improvements

North Beach Area

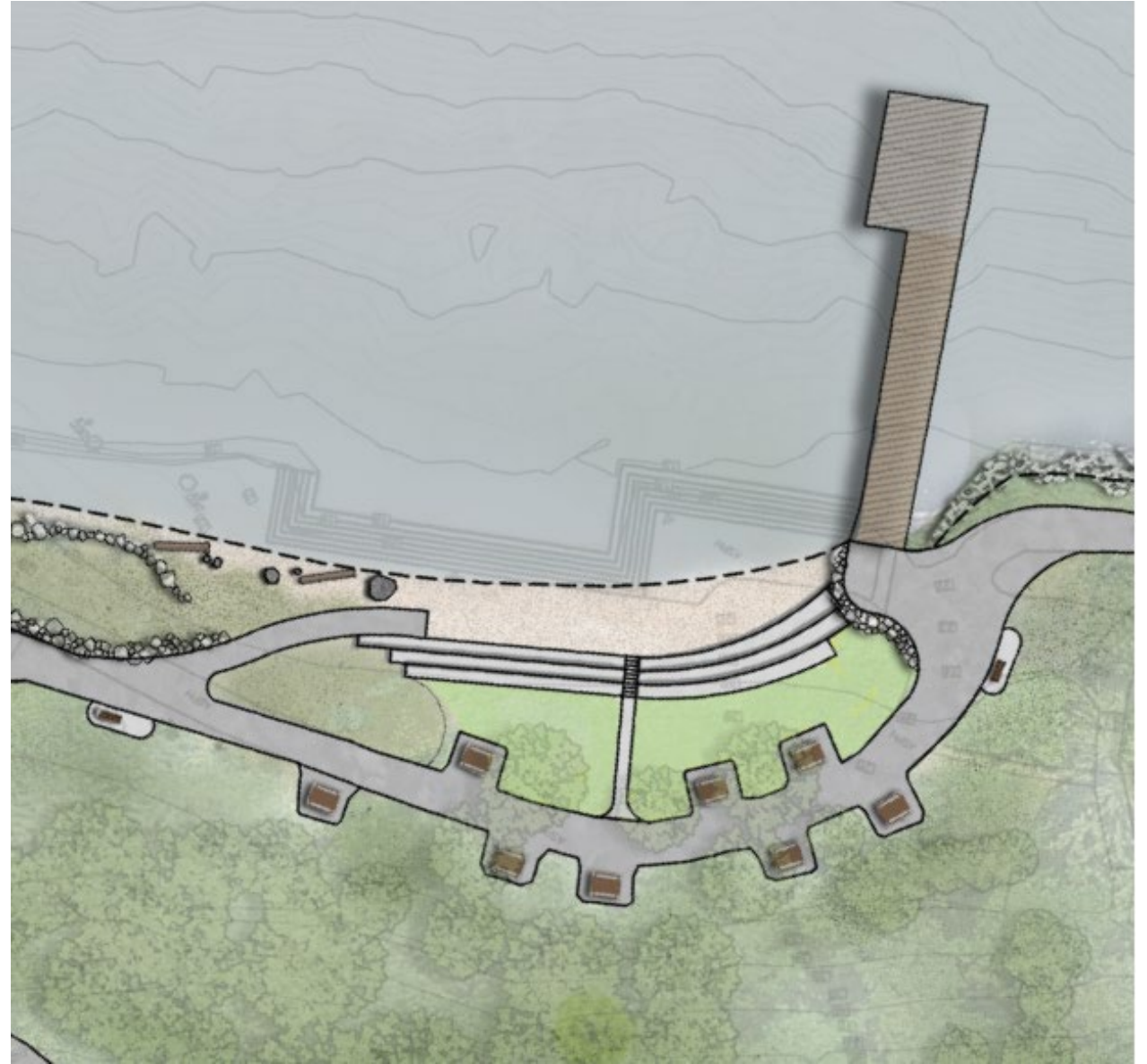
- Preserves quiet character of the beach
- Maintains safe, informal swim access
- Increased seating opportunities
- ADA access to the beach
- Naturalized beach



Preferred Waterfront Improvements

Central Beach & Picnic Area

- Combination of grass and seating
- Expanded central picnic area
- ADA access to the beach
- Gravel beach



Other Elements of Preferred Concept

- Restores the existing piers in place, including improving the trail to the small fishing pier
- Provides ADA access from the parking lot to the upland picnic area and to most waterfront amenities
- Improves the existing picnic area in the upland portion of the park
- Restores bulkhead and enhances shoreline vegetation between the two piers
- Improves pedestrian connections to East Mercer Way



Planning Level Cost Estimate for Construction

The cost estimate range for construction at this planning stage is **\$5 to \$7 million**.

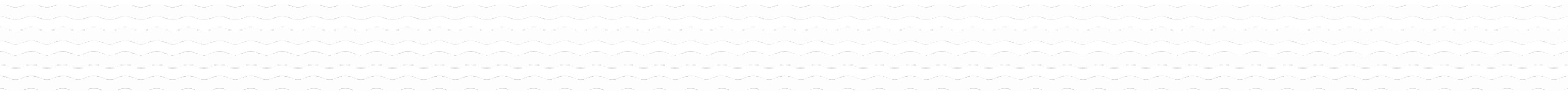


Discussion

1. Does the preferred plan for Clarke Beach Park reflect the City Council's priorities and the community's preferences? Are there any gaps or adjustments needed?
2. Does the preferred plan support the goal of providing equitable access to amenities across all waterfront parks?
3. Does the preferred concept establish a clear vision for infrastructure improvements at Clarke Beach Park?



Next Steps



Community Input on the Preferred Plans

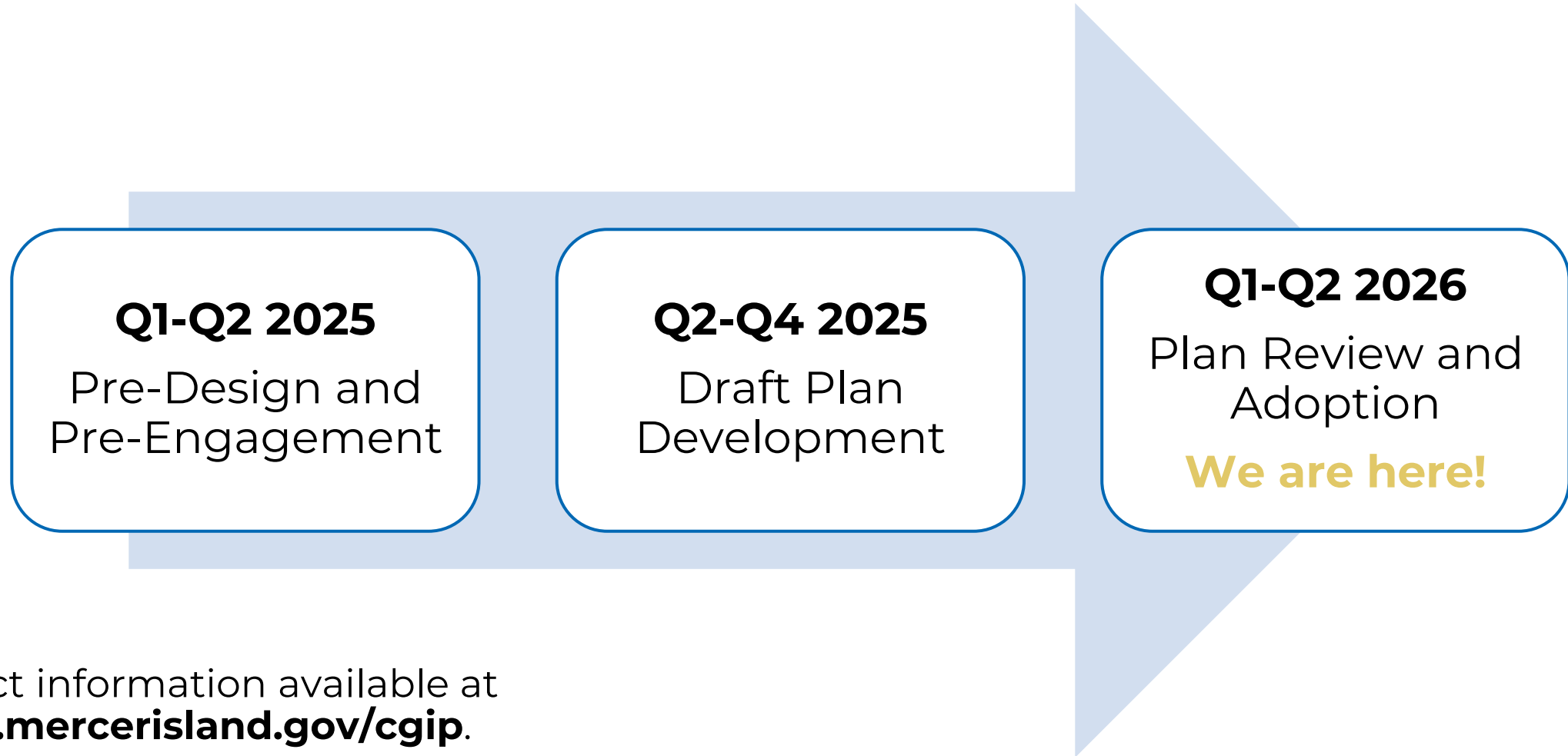
The community is encouraged to review the preferred plans and share their final thoughts during the Parks and Recreation Commission's review! Here are a few ways to provide input on the preferred plans:

1. Review the preferred plans and leave a comment on Let's Talk at [**www.mercerisland.gov/cgip**](http://www.mercerisland.gov/cgip).
2. Provide public comment to the Parks and Recreation Commission through June 4, 2026, either via written comments or during the June 4 Regular Meeting.
3. Send comments to Sarah Bluvas, CIP Project Manager, via e-mail at [**sarah.bluvas@mercerisland.gov**](mailto:sarah.bluvas@mercerisland.gov).

Next Steps

1. Refine the preferred plans based on Commission feedback.
2. Present the preferred plans to the Arts Council on April 15, 2026, and discuss opportunities for public art integration.
3. Present final Infrastructure Plan for review at June 4, 2026, Regular Meeting.
 - Commission will be asked to provide a recommendation to City Council for adoption of the Joint Infrastructure Plan for Clarke and Groveland Beach Parks.

Project Schedule



Project information available at
www.mercerisland.gov/cgip.



Thank You!

