



NOTKIN ENGINEERING, INC.
 4th & Vine Bldg.
 200 4th Ave, Suite 400
 Seattle, WA 98121
 P: 2064481811
 F: 2064481465

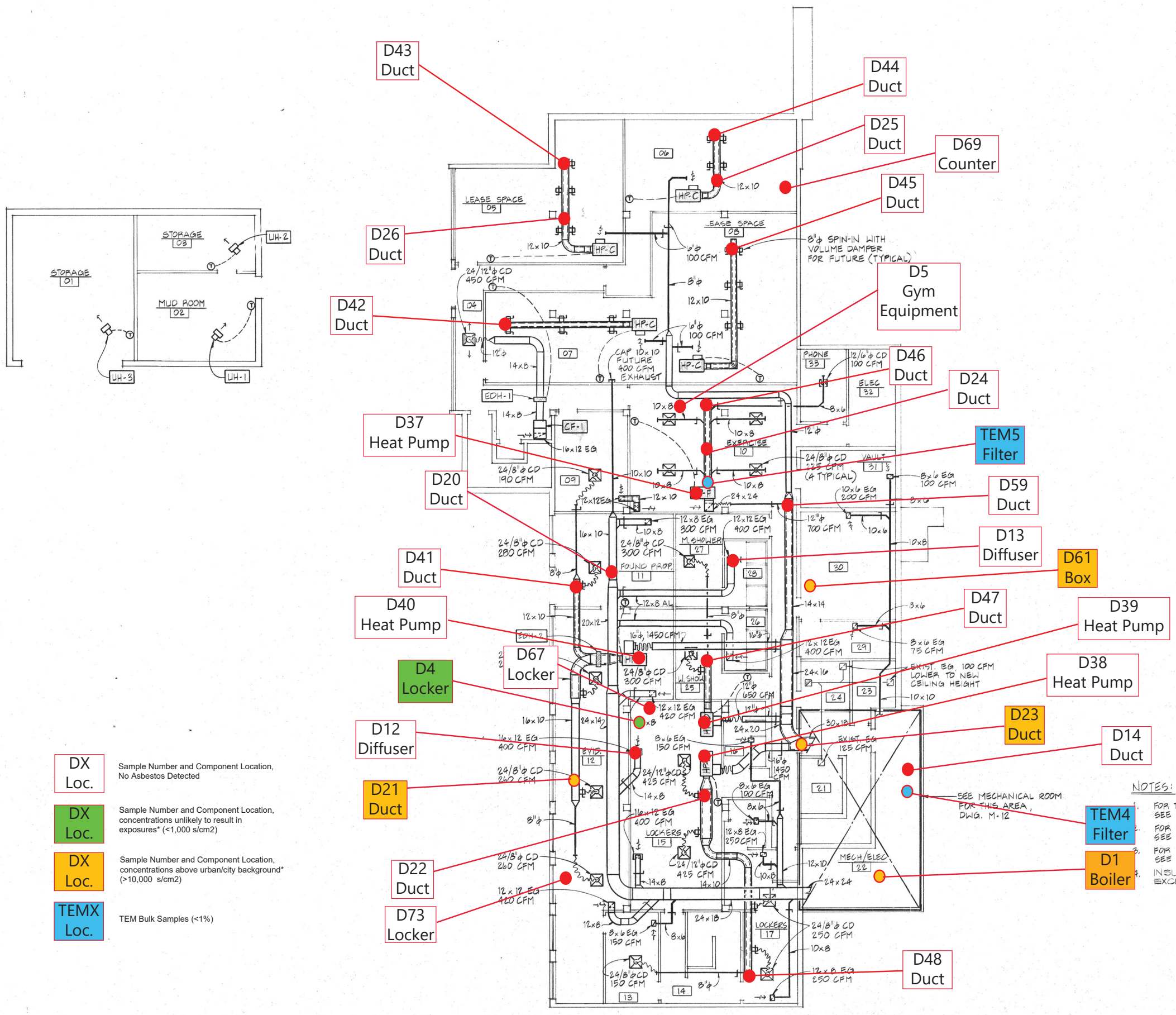
Mercer Island City Hall

Alterations and Additions to 9611 S.E. 36th Street, Mercer Island Washington

MITHUN - BOWMAN - ENRICH GROUP PS

JOB NO 88027
 DATE 8.25.88

M-6



- DX Loc.** Sample Number and Component Location, No Asbestos Detected
- DX Loc.** Sample Number and Component Location, concentrations unlikely to result in exposures* (<1,000 s/cm2)
- DX Loc.** Sample Number and Component Location, concentrations above urban/city background* (>10,000 s/cm2)
- TEMX Loc.** TEM Bulk Samples (<1%)

NOTES:
 FOR TYPICAL HEAT PUMP INSTALLATION, SEE DETAIL 2, DWG. M-14.
 FOR RELIEF GRILLE INSTALLATION SEE DETAIL 1, DWG. M-14.
 FOR TYPICAL DIFFUSER INSTALLATION SEE DETAILS 4 & 6, DWG. M-14.
 INSULATE ALL OUTSIDE AIR DUCTS EXCEPT WHERE INDICATED AS 8

* Per "EPA World Trade Center Expert Technical Review Panel on the Issue of Microvacuum Sampling", David Newman, May 3, 2004 (Reapproved 2014)

BASEMENT PLAN - HVAC

SCALE 1/8"=1'-0"



ASTM-D Dust and TEM Bulk Sampling Diagram
 07/13/2023
 Page 1 of 3

255 7235

PAGE 5 OF 38



NOTKIN ENGINEERING, INC.

4th & Vine Bldg
2515 4th Ave., Suite 420
Seattle, WA 98101
OFF: 206.448.1911
FAX: 206.448.9485

Mercer Island City Hall

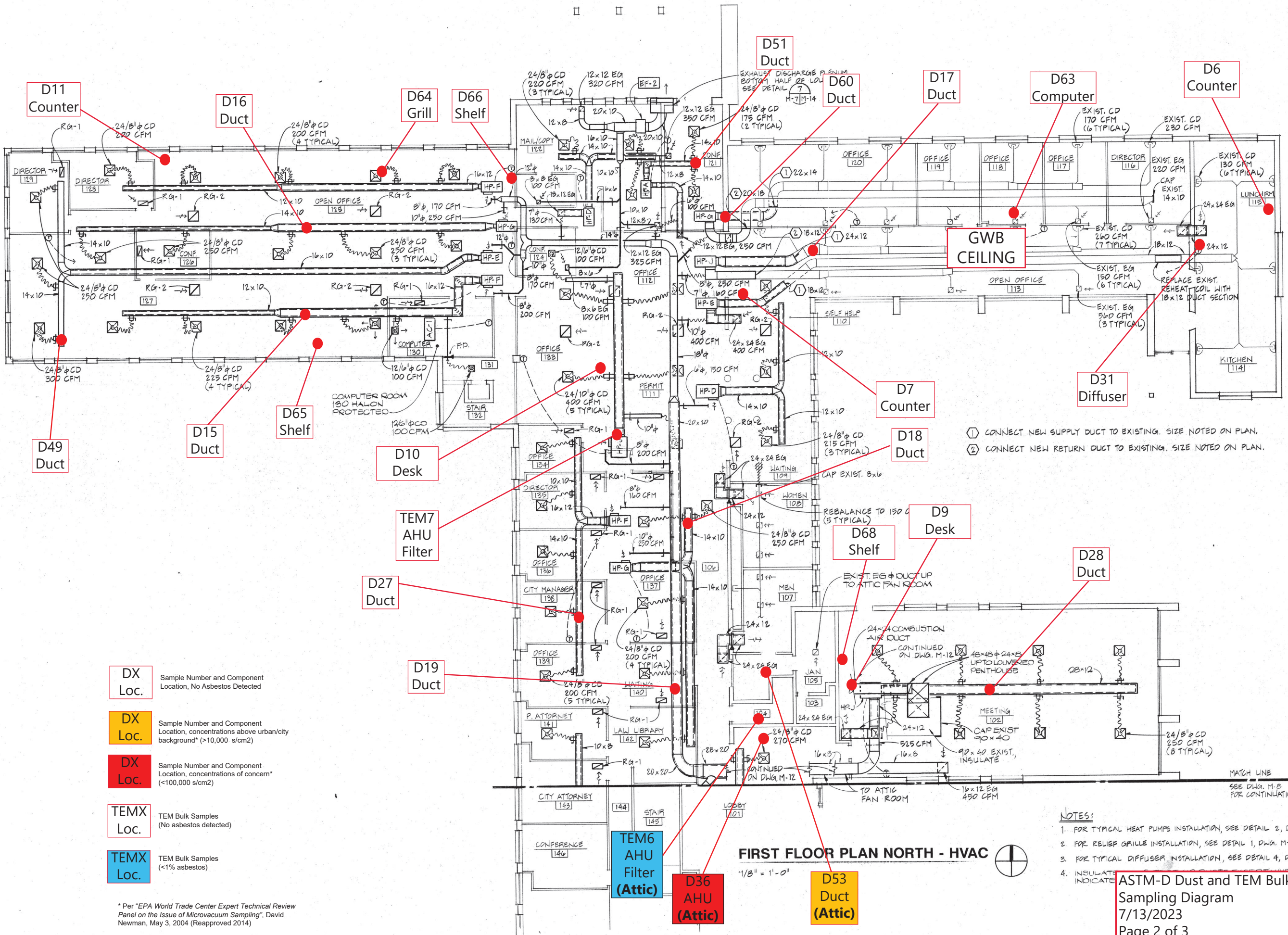
Alterations and Additions to 9611 S.E. 36th Street, Mercer Island Washington

MITHUN-BOWMAN-EMRICH GROUP PS
ARCHITECTURE
PLANNING AND
INTERIOR DESIGN

2000 112TH AVE NE
BELLEVUE, WASH
98004 (206) 454-3344

JOB NO. 83027
DATE: 8-25-85

M-7



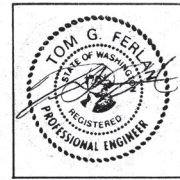
- ① CONNECT NEW SUPPLY DUCT TO EXISTING. SIZE NOTED ON PLAN.
- ② CONNECT NEW RETURN DUCT TO EXISTING. SIZE NOTED ON PLAN.

- DX Loc.** Sample Number and Component Location, No Asbestos Detected
- DX Loc.** Sample Number and Component Location, concentrations above urban/city background* (>10,000 s/cm2)
- DX Loc.** Sample Number and Component Location, concentrations of concern* (<100,000 s/cm2)
- TEMX Loc.** TEM Bulk Samples (No asbestos detected)
- TEMX Loc.** TEM Bulk Samples (<1% asbestos)

* Per "EPA World Trade Center Expert Technical Review Panel on the Issue of Microvacuum Sampling", David Newman, May 3, 2004 (Reapproved 2014)

- NOTES:**
- FOR TYPICAL HEAT PUMPS INSTALLATION, SEE DETAIL 2, DWG. M-14.
 - FOR RELIEF GRILLE INSTALLATION, SEE DETAIL 1, DWG. M-14.
 - FOR TYPICAL DIFFUSER INSTALLATION, SEE DETAIL 4, DWG. M-14.
 - INSULATE INDICATED

ASTM-D Dust and TEM Bulk Sampling Diagram
7/13/2023
Page 2 of 3



NOTKIN ENGINEERING, INC.
 4th & Vine Bldg.
 2000 1st Ave., Suite 400
 Seattle, WA 98101
 P: 206448-9111
 F: 206448-9485

Mercer Island City Hall

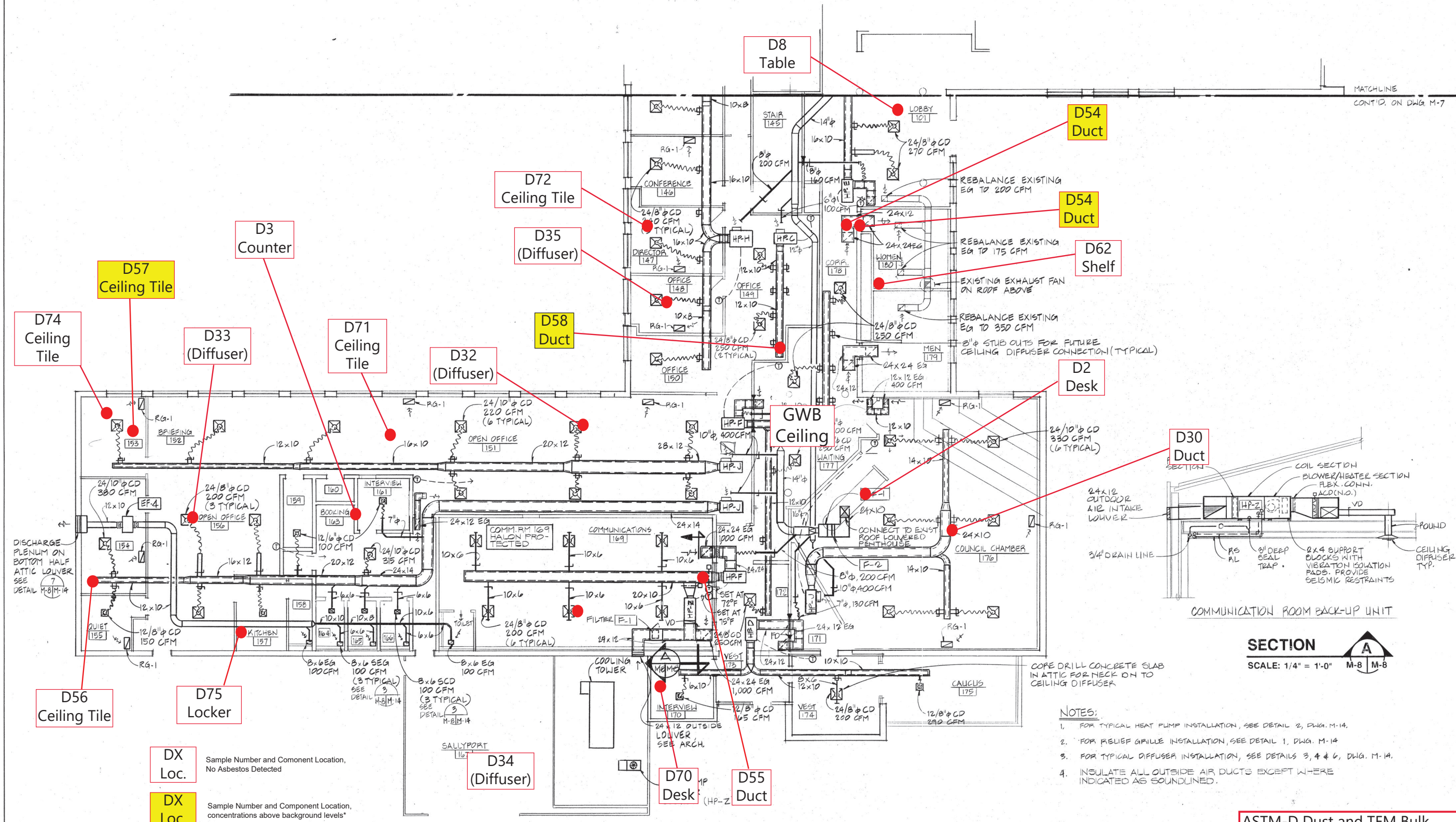
Alterations and Additions to 9611 S.E. 36th Street, Mercer Island Washington

MITHUN-BOWMAN-EMRICH GROUP PS
 ARCHITECTURE
 PLANNING AND
 INTERIOR DESIGN

2000 112TH AVENUE
 BELLEVUE, WASH.
 98004 (206)454-3344

JOB NO 88027
 DATE 8-25-88

M-8



FIRST FLOOR PLAN SOUTH - HVAC

1/8" = 1'-0"

DX Loc. Sample Number and Component Location, No Asbestos Detected

DX Loc. Sample Number and Component Location, concentrations above background levels*

- NOTES:**
1. FOR TYPICAL HEAT PUMP INSTALLATION, SEE DETAIL 2, DWG. M-14.
 2. FOR RELIEF GRILLE INSTALLATION, SEE DETAIL 1, DWG. M-14.
 3. FOR TYPICAL DIFFUSER INSTALLATION, SEE DETAILS 3, 4 & 6, DWG. M-14.
 4. INSULATE ALL OUTSIDE AIR DUCTS EXCEPT WHERE INDICATED AS SOUNDLINED.

ASTM-D Dust and TEM Bulk Sampling Diagram
 7/13/2023
 Page 3 of 3

Sample Number and Component Location, concentrations above background levels*

* Per "EPA World Trade Center Expert Technical Review Panel on the Issue of Microvacuum Sampling", David Newman, May 3, 2004 (Reapproved 2014)

* Per "EPA World Trade Center Expert Technical Review Panel on the Issue of Microvacuum Sampling", David Newman, May 3, 2004 (Reapproved 2014)