



November 16, 2022

TO: Ramin Pazooki / Peter Alm
Sno-King Development Services, MS 240

FROM: Christina Strand / Jennifer Nyerick
NWR - King Area Traffic Analysis, MS 120

SUBJECT: I-90 Trail Improvements at Aubrey Davis Park
City of Mercer Island
Two Roundabout Alternatives

WSDOT NW Region Traffic has reviewed the submission package for the I-90 Trail Improvements at Aubrey Davis Park submitted in November 2022. The project will improve the I-90 trail through Aubrey Davis Park. This submission included two alternatives for the trail intersection underneath 72nd Ave SE.

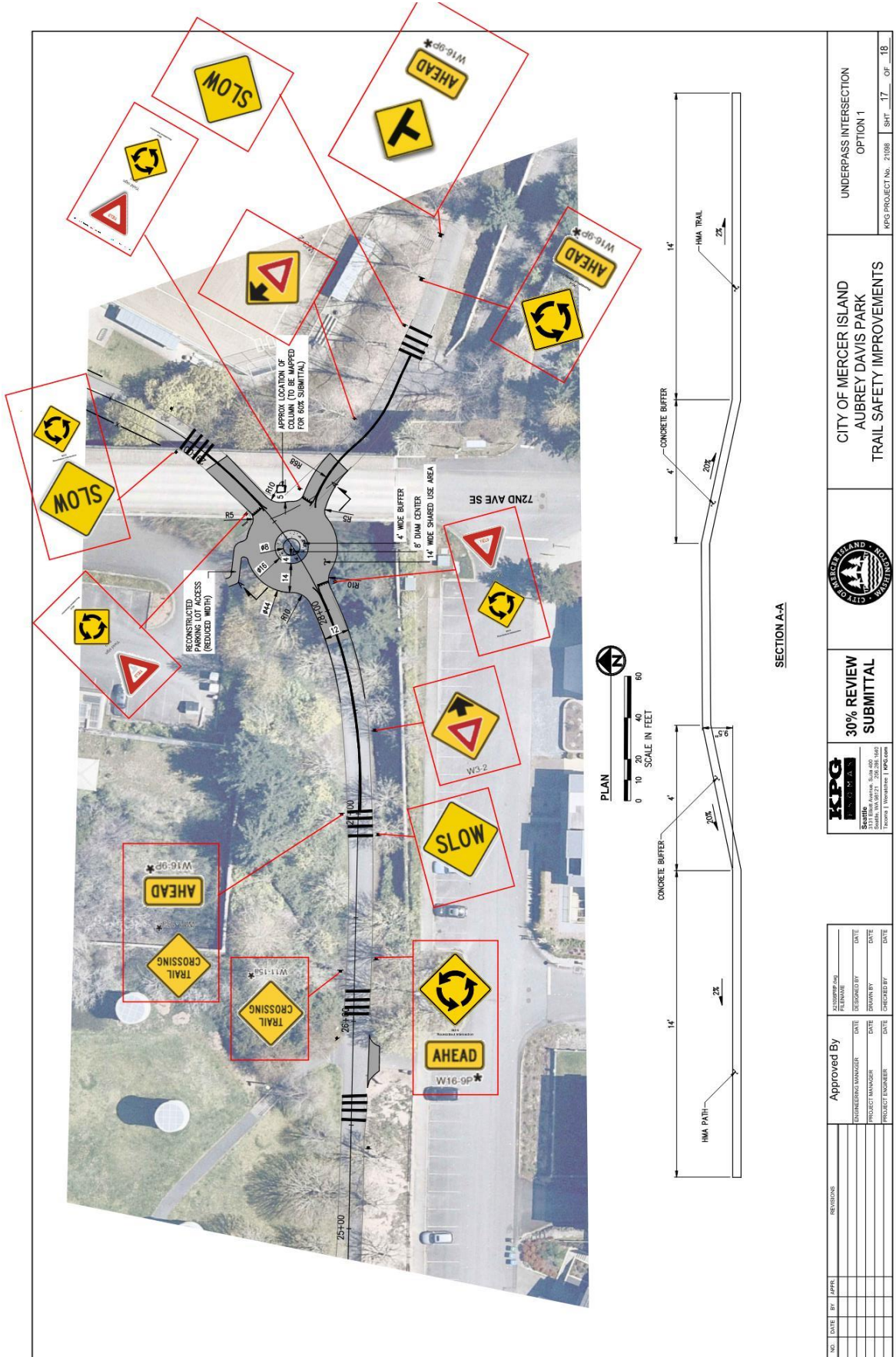
After meeting with the City of Mercer Island and the design consultants to discuss, WSDOT prefers the larger roundabout alternative, also called Option 1.

The chosen alternative includes a 14' circulating width, where Option 2 only has 12'. The larger width allows for more space for all types of trail users to turn around the circle. This alternative also includes a larger, raised, and contrasting center island, which reinforces the roundabout control of the intersection and acts as speed mitigation for cyclists. The larger size of the roundabout also increases sight distance for approaching trail users. In general, WSDOT would also prefer to use more pavement markings over certain signs to reduce sign clutter. Please consider which signs may work better as pavement markings, such as "slow." We look forward to continuing to work with the City in their efforts to refine their design of the roundabout and center island.

If you have any questions regarding the review comments, please contact Christina Strand at 206-305-3349.

CS:jn

Attachments: *Option 1 Trail Roundabout Concept*



NO.	DATE	BY	APPVL	REVISIONS

Approved By		DESIGNED BY		CHECKED BY	

KPG		30% REVIEW SUBMITTAL		CITY OF MERCER ISLAND		UNDERPASS INTERSECTION OPTION 1	

KPG PROJECT No. 21088		SHEET 17 OF 18	