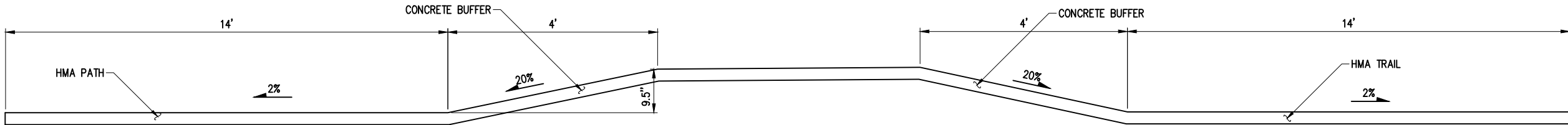
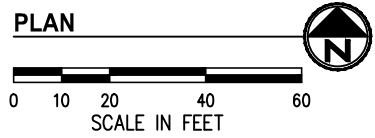
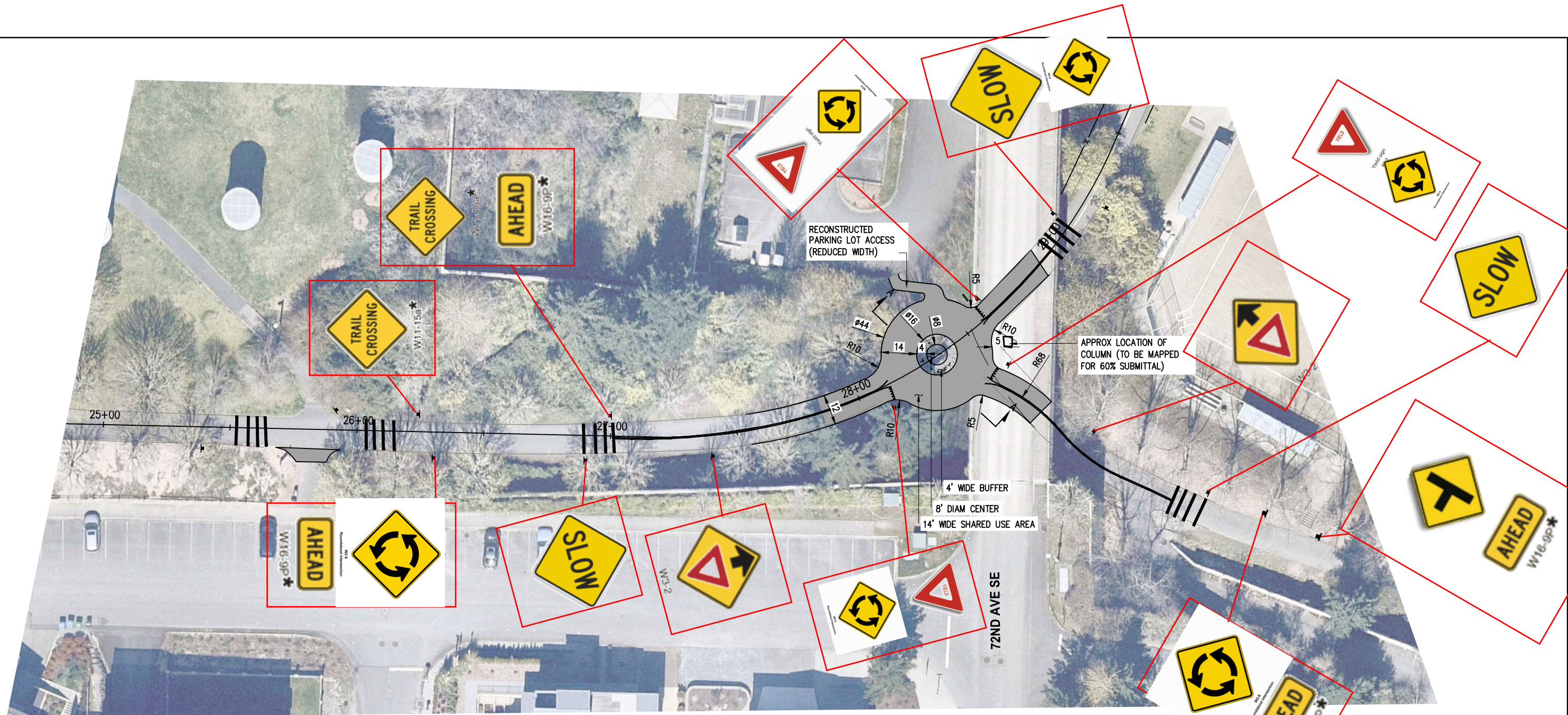


K:\PROJECTS\MERCER IS\21098-Aubrey Davis Park Improvements\DESIGN\Drawings\Contract\X21098PRP.dwg 11/1/2022 10:23 PM



SECTION A-A

NO.	DATE	BY	APPR.	REVISIONS

Approved By		X21098PRP.dwg FILENAME	
ENGINEERING MANAGER	DATE	DESIGNED BY	DATE
PROJECT MANAGER	DATE	DRAWN BY	DATE
PROJECT ENGINEER	DATE	CHECKED BY	DATE

KPG
PSOMAS
Seattle
3131 Elliott Avenue, Suite 400
Seattle, WA 98121 206.286.1640
Tacoma | Wenatchee | KPG.com

**30% REVIEW
SUBMITTAL**



CITY OF MERCER ISLAND
AUBREY DAVIS PARK
TRAIL SAFETY IMPROVEMENTS

UNDERPASS INTERSECTION OPTION 1	
KPG PROJECT No. 21098	SHT 17 OF 18