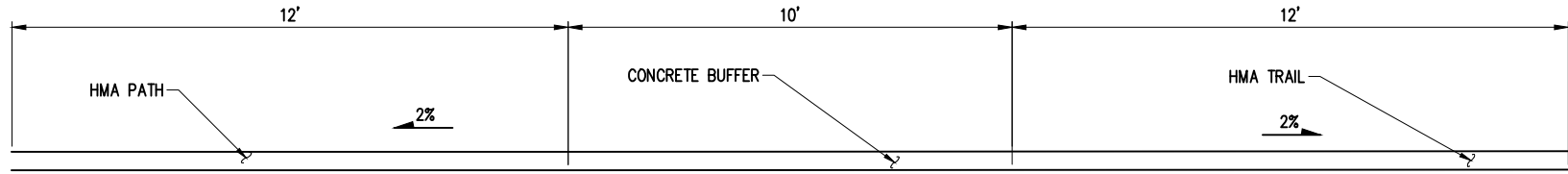
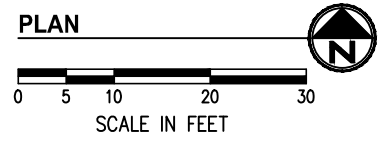
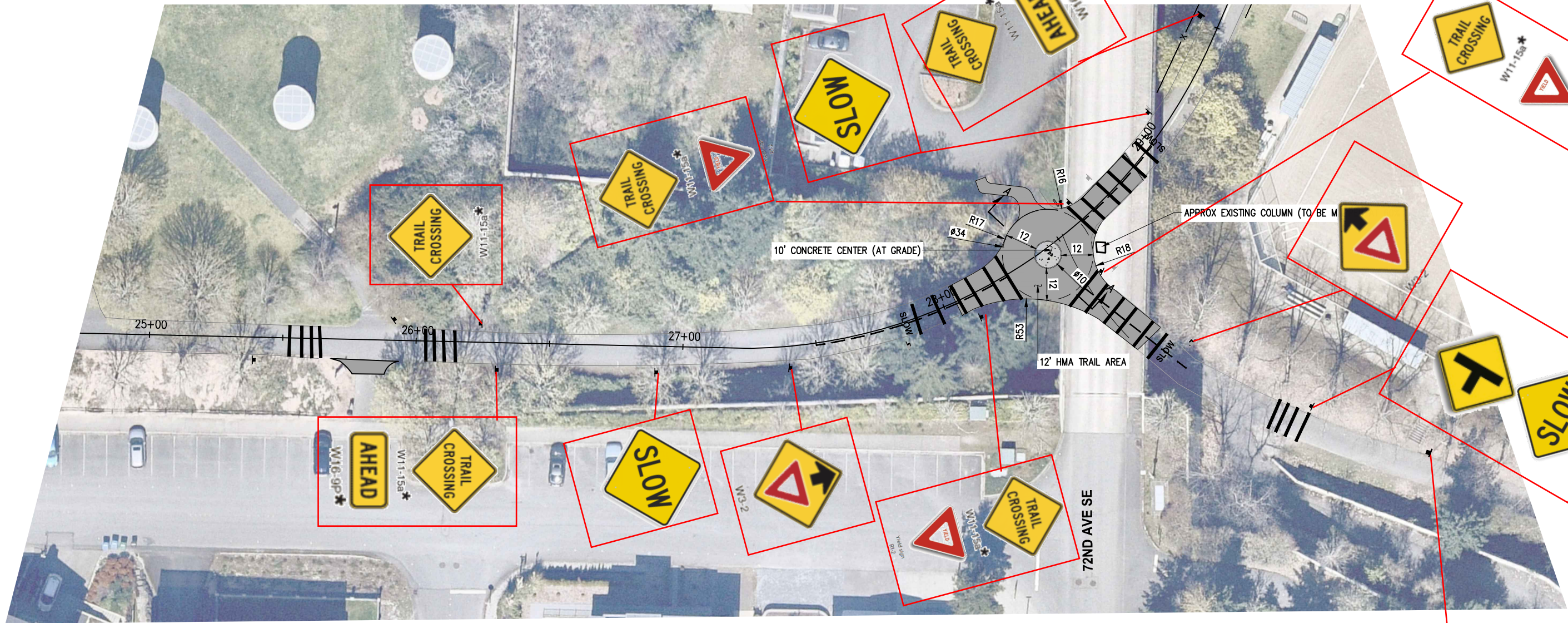


K:\PROJECTS\MERCER IS\21098-Aubrey Davis Park Improvements\DESIGN\Drawings\Contract\X21098PRP.dwg 11/2/2022 4:09 PM



SECTION A-A

NO.	DATE	BY	APPR.	REVISIONS

Approved By		X21098PRP.dwg FILENAME	
ENGINEERING MANAGER	DATE	DESIGNED BY	DATE
PROJECT MANAGER	DATE	DRAWN BY	DATE
PROJECT ENGINEER	DATE	CHECKED BY	DATE

**KPG**  
PSOMAS  
Seattle  
3131 Elliott Avenue, Suite 400  
Seattle, WA 98121 206.286.1640  
Tacoma | Wenatchee | KPG.com

**30% REVIEW  
SUBMITTAL**



CITY OF MERCER ISLAND  
AUBREY DAVIS PARK  
TRAIL SAFETY IMPROVEMENTS

SITE ELEMENT PLANS STA 28+00 TO STA 29+50	
KPG PROJECT No. 21098	SHT 17 OF 18