



# Mercer Island Public Safety and Maintenance Facility

# Schematic Design Facility Plans



MERCER ISLAND PUBLIC SAFETY & MAINTENANCE FACILITY

04/25/2025 PRICING SET

OWNER	CITY OF MERCER ISLAND 9611 SE 36TH ST, MERCER ISLAND, WA 98040 CONTACT: JESSI BON P: 425-414-2257 E: JESSI.BON@MERCERGOV.ORG	STRUCTURAL ENGINEER	QUANTUM ENGINEERING 1511 3RD AVE STE 323, SEATTLE, WA 98101 CONTACT: SCOTT TINKER E: SCOTT.TINKER@QUANTUMCE.COM P: 206.957.3900
ARCHITECT	NORTHWEST STUDIO 1205 E PIKE ST #2F, SEATTLE, WA 98122 CONTACT: AARON YOUNG E: AYOUNG@NORTHWESTSTUDIO.COM P: 206.788.8156	CIVIL ENGINEER	JMJ ENGINEERING 905 MAIN ST #200, SUMNER, WA 98390 CONTACT: JUSTIN JONES E: JUSTIN@JMJTEAM.COM P: 206.596.2020
LANDSCAPE ARCHITECT	BERGER PARTNERSHIP A: 1927 POST ALLEY WALK WY #2, SEATTLE, WA 98101 CONTACT: ANNA O'CONNELL E: ANNAO@BERGERPARTNERSHIP.COM P: 206.325.6877	MEP ENGINEER	PAE ENGINEERING 1501 E MADISON ST #300, SEATTLE, WA 98122 CONTACT: ASHLI BUSH E: ASHLI.BUSH@PAE-ENGINEERS.COM P: 206.596.8606

MERCER ISLAND PUBLIC SAFETY & MAINTENANCE FACILITY

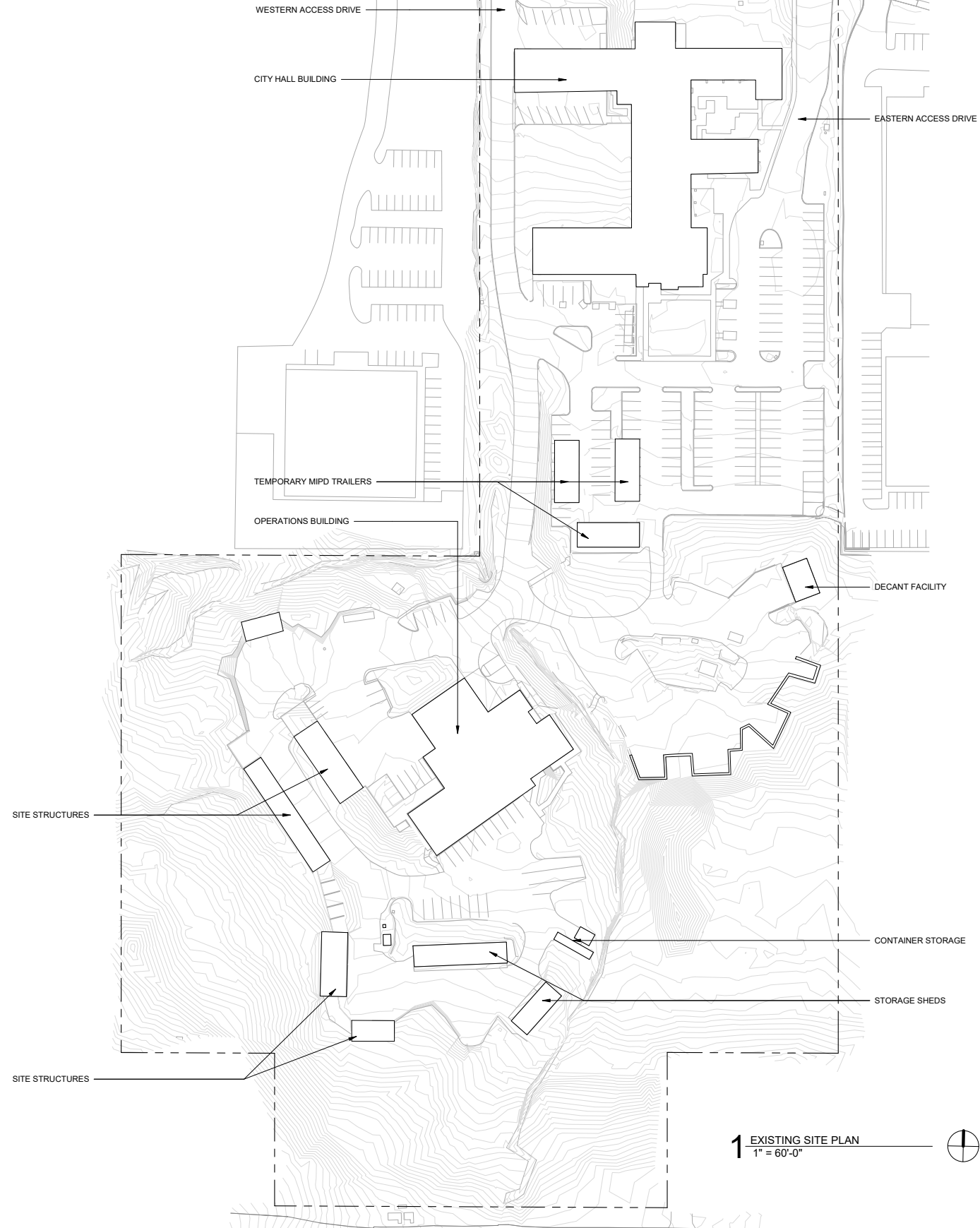
9611 SE 36TH ST, MERCER ISLAND, WA 98040  
OWNED BY CITY OF MERCER ISLAND  
9611 SE 36TH ST, MERCER ISLAND, WA 98040

northwest studio ARCHITECTS URBAN DESIGNERS  
1205 E PIKE ST, 2F, SEATTLE, WA 98122 206.788.8156

DRAFT

COVER SHEET

G-000.00



**MERCER ISLAND PUBLIC SAFETY  
& MAINTENANCE FACILITY**

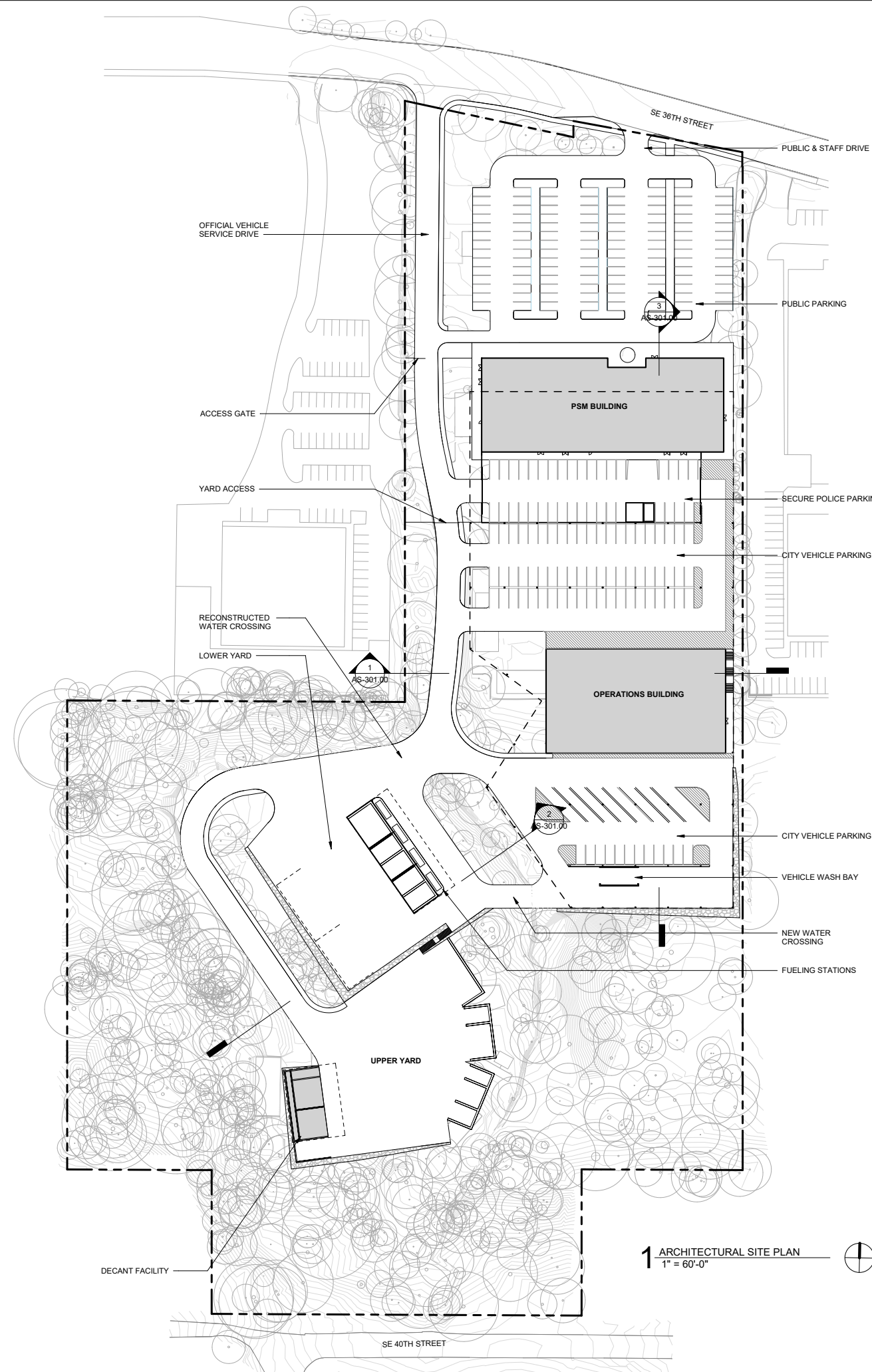
9611 SE 36TH ST, MERCER ISLAND, WA 98040  
OWNED BY **CITY OF MERCER ISLAND**  
9611 SE 36TH ST, MERCER ISLAND, WA 98040

**northwest studio** ARCHITECTS URBAN DESIGNERS  
1205 E PIKE ST, 2F, SEATTLE, WA 98122 206.788.8156

**DRAFT**

EXISTING SITE PLAN

**XS-101.00**



**MERCER ISLAND PUBLIC SAFETY  
& MAINTENANCE FACILITY**

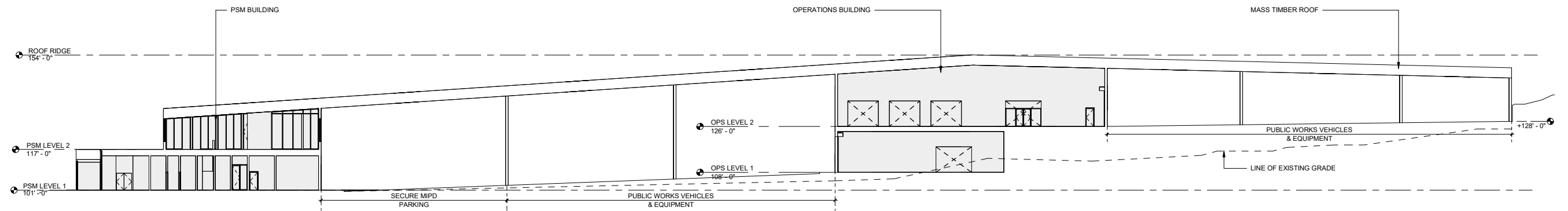
9611 SE 36TH ST, MERCER ISLAND, WA 98040  
OWNED BY **CITY OF MERCER ISLAND**  
9611 SE 36TH ST, MERCER ISLAND, WA 98040

**northwest studio** ARCHITECTS URBAN DESIGNERS  
1205 E PIKE ST, 2F, SEATTLE, WA 98122 206.788.8156

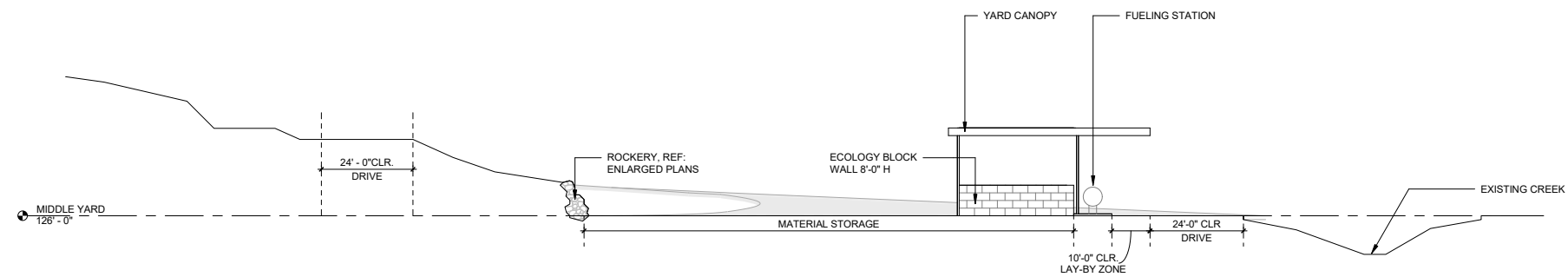
**DRAFT**

PROPOSED SITE PLAN

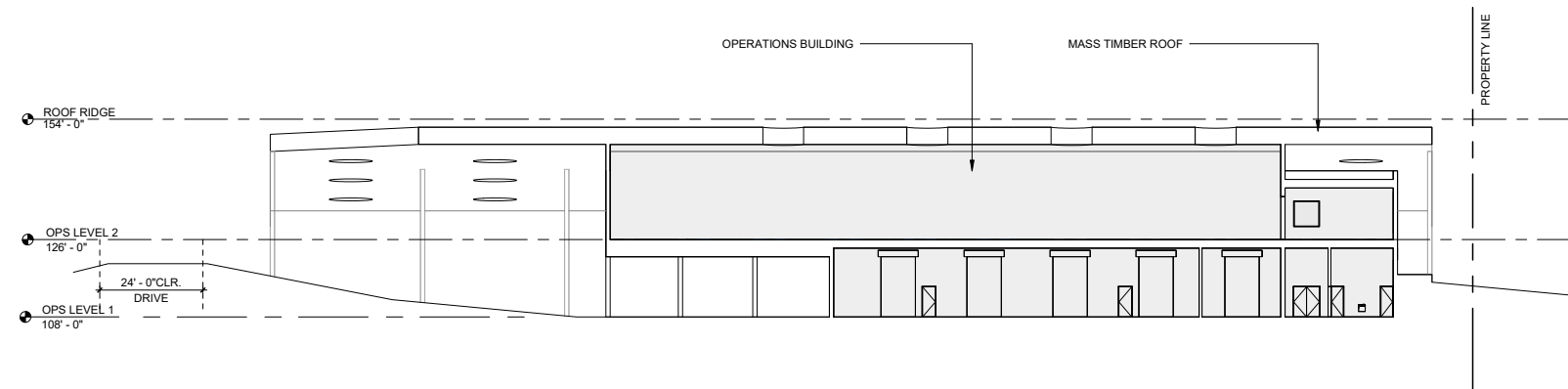
**AS-101.00**



**3** SITE SECTION  
1" = 20'-0"



**2** SITE SECTION  
1" = 20'-0"



**1** SITE SECTION  
1" = 20'-0"

**MERCER ISLAND PUBLIC SAFETY  
& MAINTENANCE FACILITY**

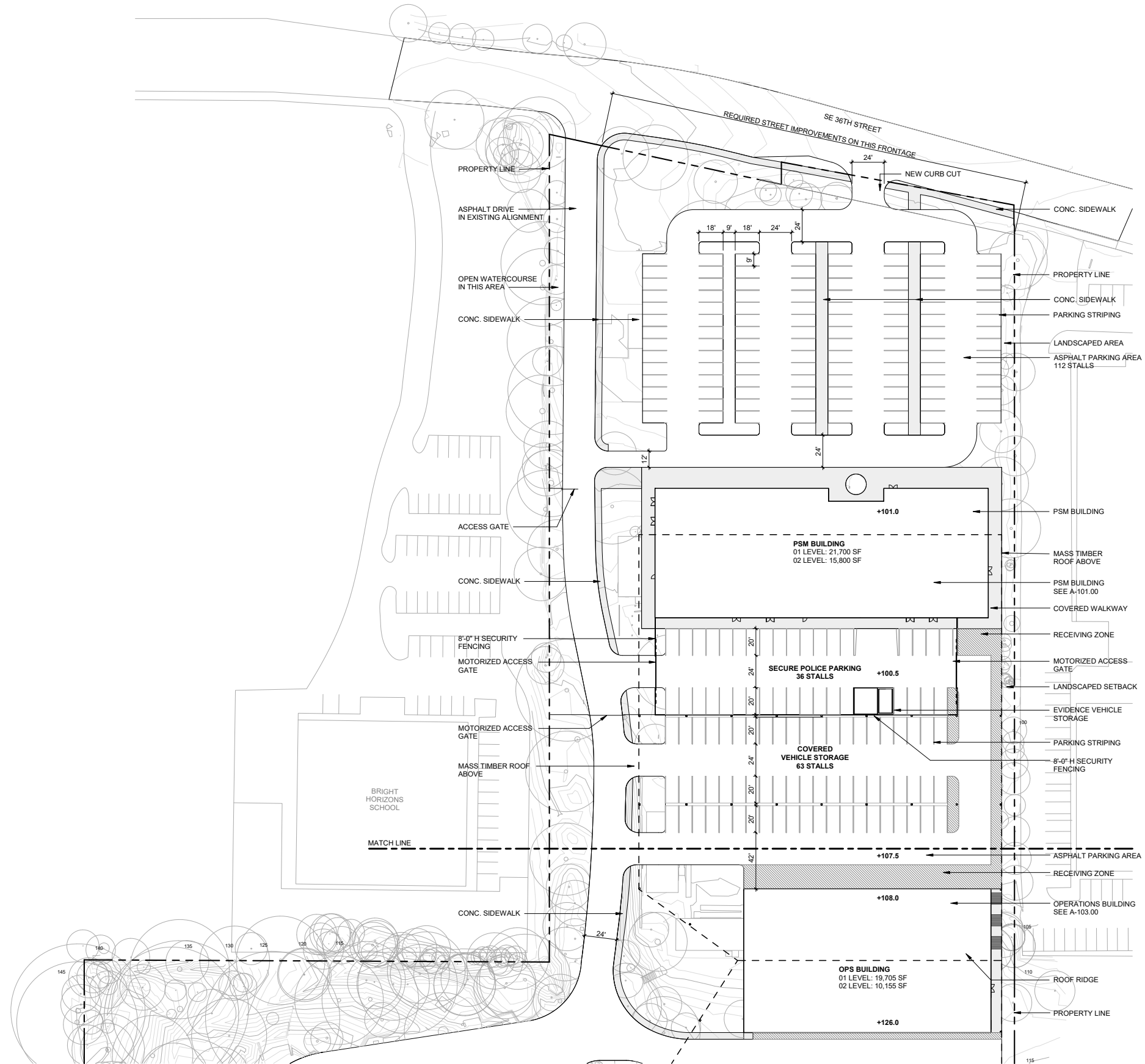
9611 SE 36TH ST, MERCER ISLAND, WA 98040  
OWNED BY **CITY OF MERCER ISLAND**  
9611 SE 36TH ST, MERCER ISLAND, WA 98040

**northwest studio** ARCHITECTS URBAN DESIGNERS  
1205 E PIKE ST, 2F, SEATTLE, WA 98122 206.788.8156

**DRAFT**

SITE SECTIONS

**AS-301.00**



1 ENLARGED ROOF PLAN  
1" = 40'-0"



MERCER ISLAND PUBLIC SAFETY & MAINTENANCE FACILITY

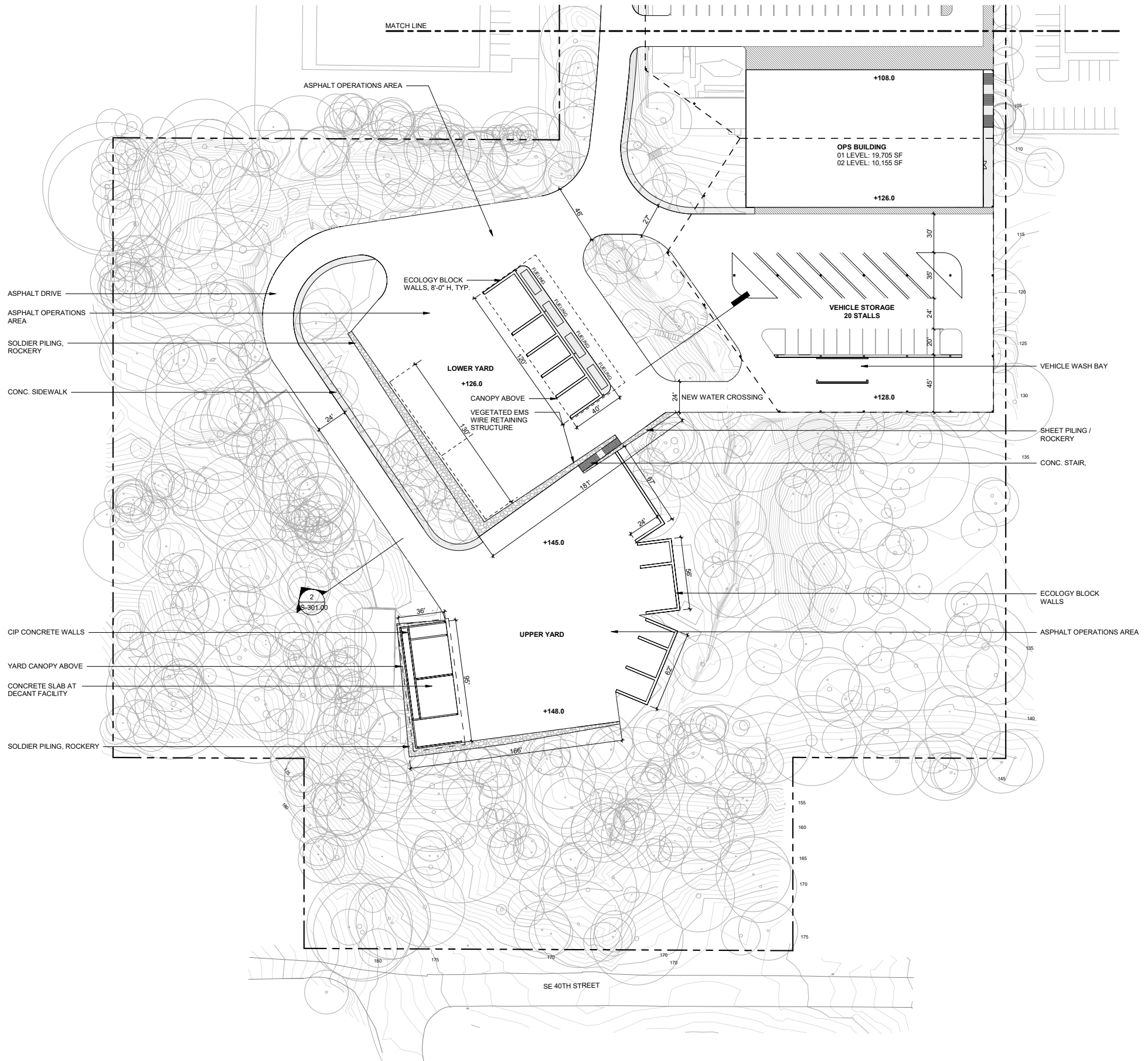
9611 SE 36TH ST, MERCER ISLAND, WA 98040  
OWNED BY CITY OF MERCER ISLAND  
9611 SE 36TH ST, MERCER ISLAND, WA 98040

northwest studio ARCHITECTS URBAN DESIGNERS  
1205 E PIKE ST, 2F, SEATTLE, WA 98122 206.788.8156

ENLARGED SITE PLAN

AS-401.00

DRAFT



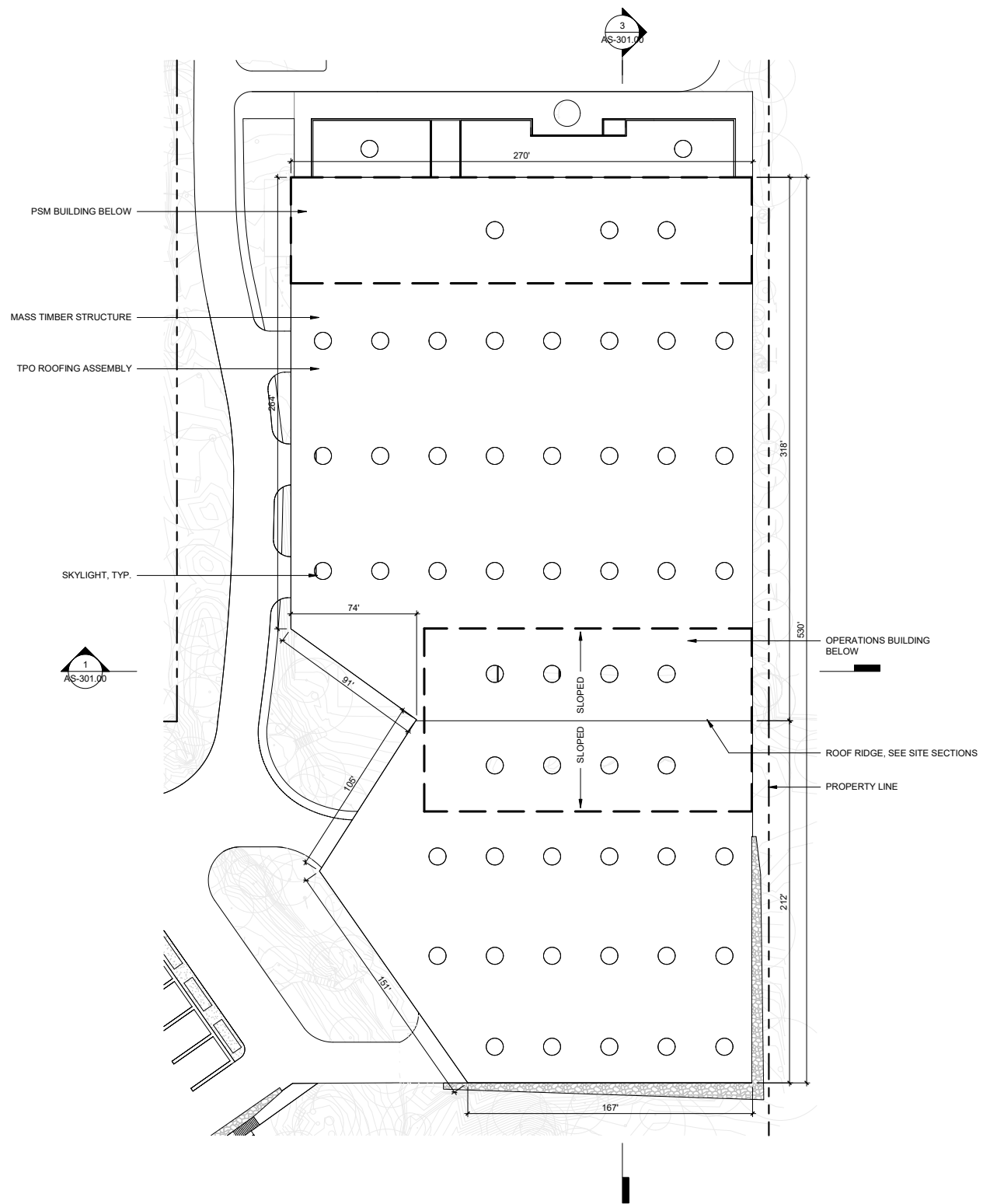
1 ENLARGED ROOF PLAN  
1" = 40'-0"

MERCER ISLAND PUBLIC SAFETY  
& MAINTENANCE FACILITY  
9611 SE 36TH ST, MERCER ISLAND, WA 98040  
OWNED BY CITY OF MERCER ISLAND  
9611 SE 36TH ST, MERCER ISLAND, WA 98040  
northwest studio ARCHITECTS URBAN DESIGNERS  
1205 E PIKE ST, 2F, SEATTLE, WA 98122 206.788.8156

DRAFT

ENLARGED SITE PLAN

AS-402.00



**MERCER ISLAND PUBLIC SAFETY  
& MAINTENANCE FACILITY**

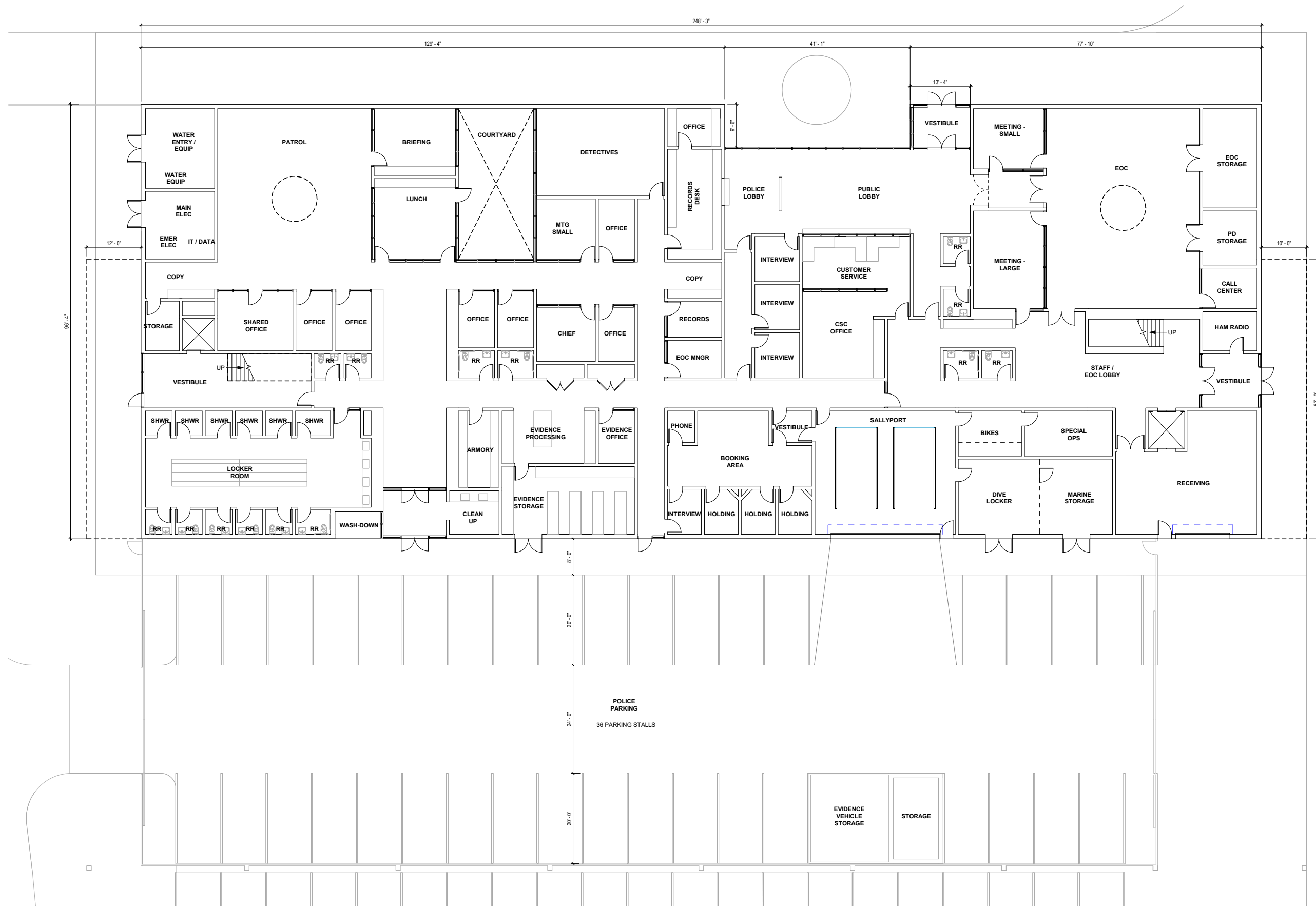
9611 SE 36TH ST, MERCER ISLAND, WA 98040  
OWNED BY **CITY OF MERCER ISLAND**  
9611 SE 36TH ST, MERCER ISLAND, WA 98040

**northwest studio** ARCHITECTS URBAN DESIGNERS  
1205 E PIKE ST, 2F, SEATTLE, WA 98122 206.788.8156

ROOF PLAN

**AS-403.00**

**DRAFT**



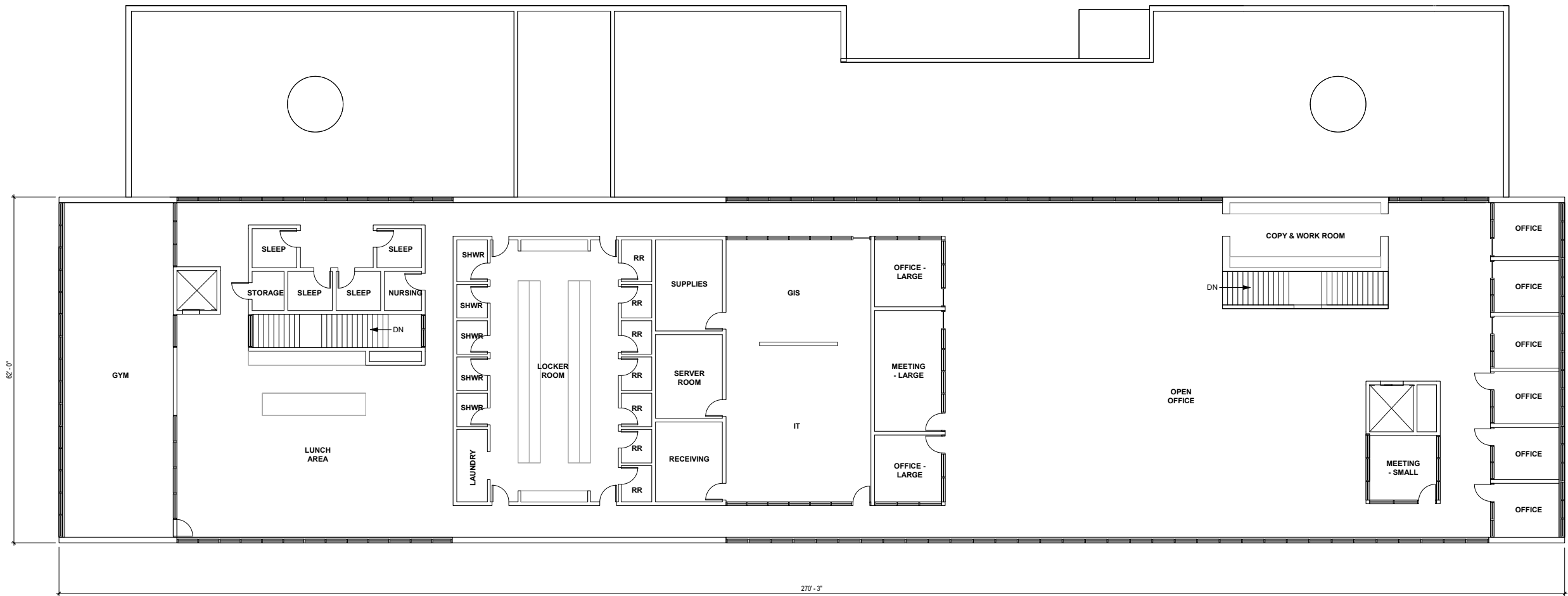
1 PSM OFFICE BUILDING FIRST FLOOR PLAN  
1" = 10'-0"

MERCER ISLAND PUBLIC SAFETY  
& MAINTENANCE FACILITY  
9611 SE 36TH ST, MERCER ISLAND, WA 98040  
OWNED BY CITY OF MERCER ISLAND  
9611 SE 36TH ST, MERCER ISLAND, WA 98040  
northwest studio ARCHITECTS URBAN DESIGNERS  
1205 E PIKE ST, 2F, SEATTLE, WA 98122 206.788.8156

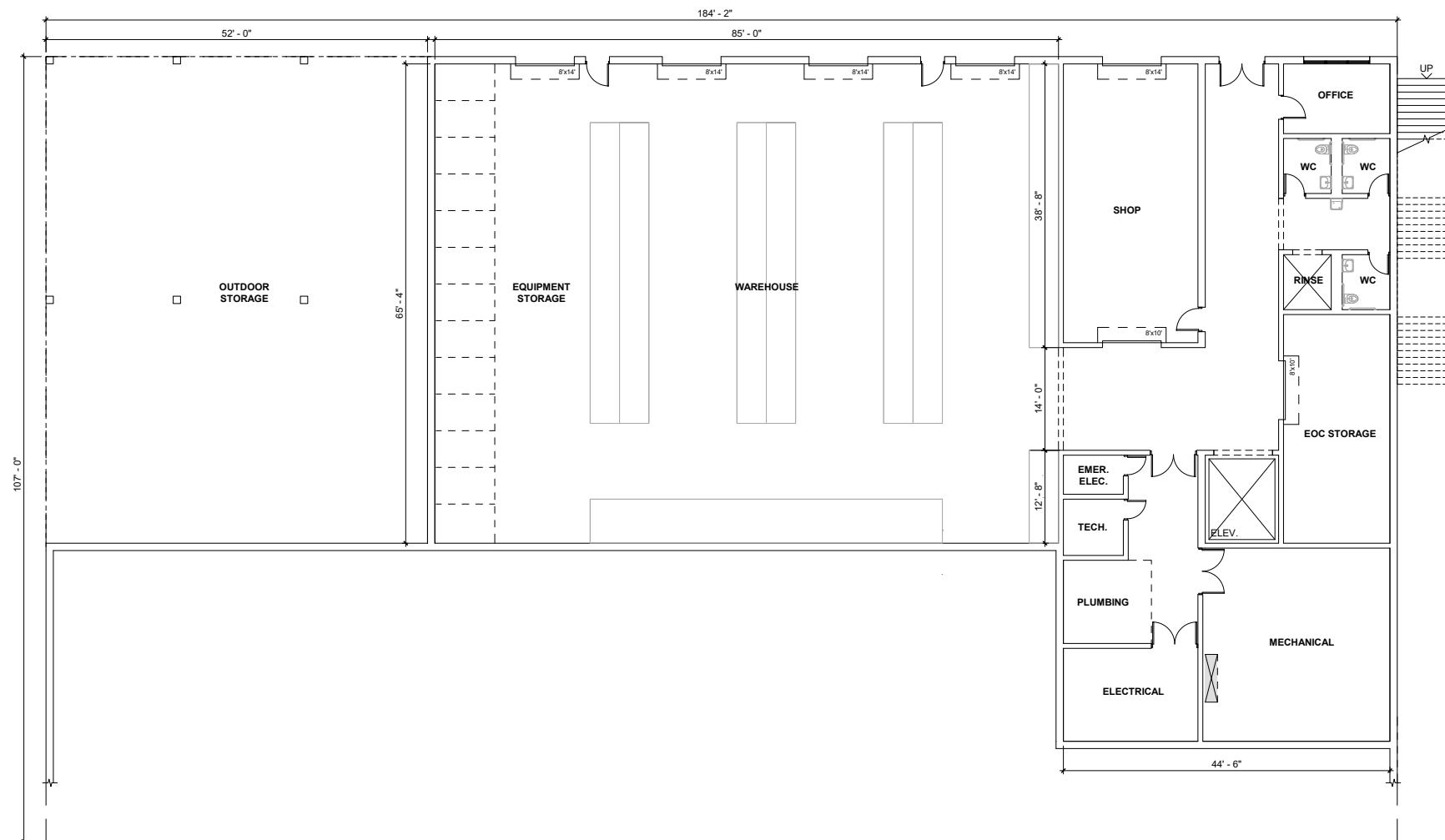
DRAFT

LEVEL 1 FLOOR PLAN

A-101.00



DRAFT



1 OPERATIONS BUILDING LEVEL 1 FLOOR PLAN  
1" = 10'-0"



MERCER ISLAND PUBLIC SAFETY  
& MAINTENANCE FACILITIES

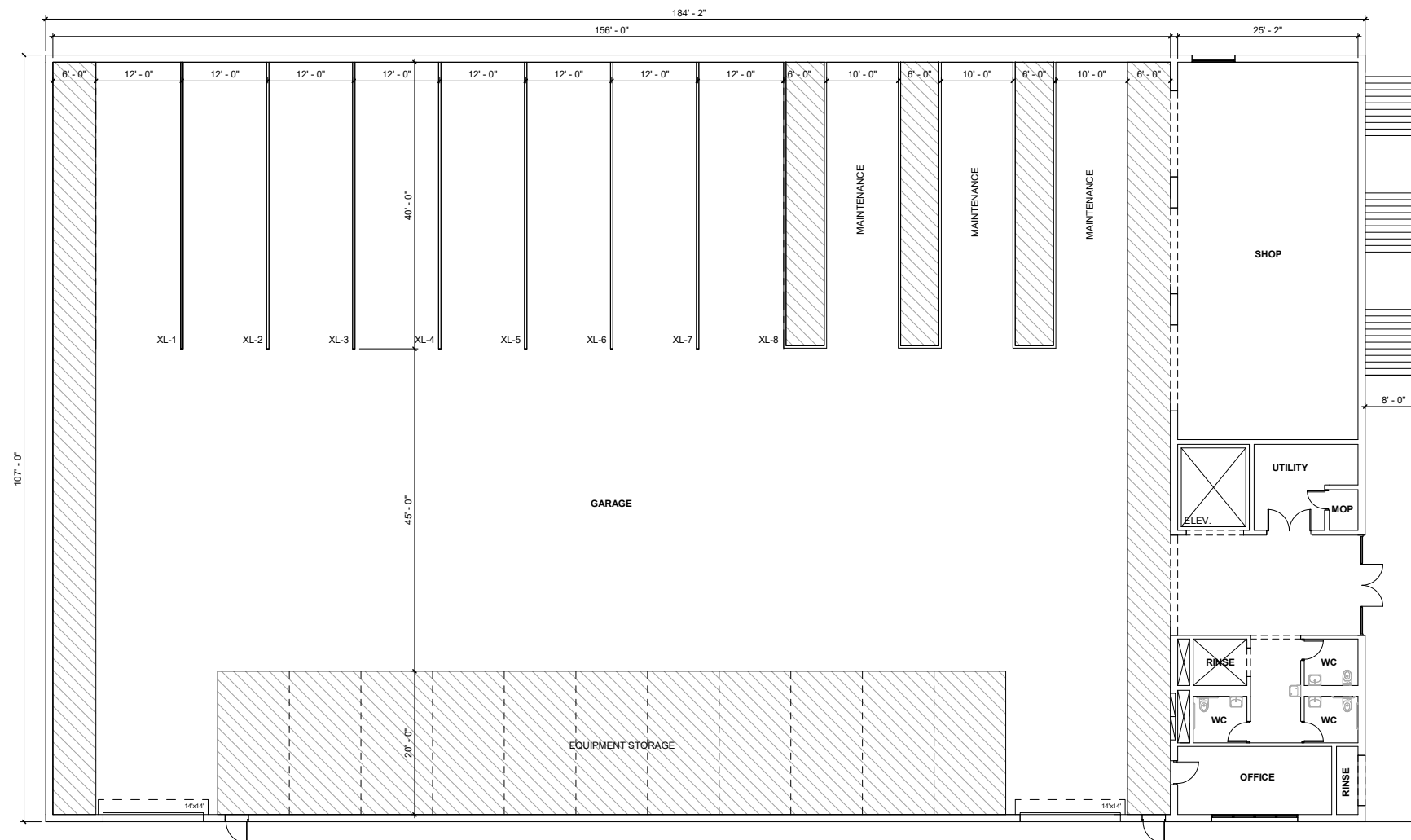
9611 SE 36TH ST, MERCER ISLAND, WA 98040  
OWNED BY CITY OF MERCER ISLAND  
9611 SE 36TH ST, MERCER ISLAND, WA 98040

northwest studio ARCHITECTS URBAN DESIGNERS  
1205 E PIKE ST, 2F, SEATTLE, WA 98122 206.788.8156

DRAFT

OPERATIONS BLDG - LEVEL 1  
FLOOR PLAN

A-111.00



1 OPERATIONS BUILDING LEVEL 2 FLOOR PLAN  
1" = 10'-0"

MERCER ISLAND PUBLIC SAFETY  
& MAINTENANCE FACILITIES

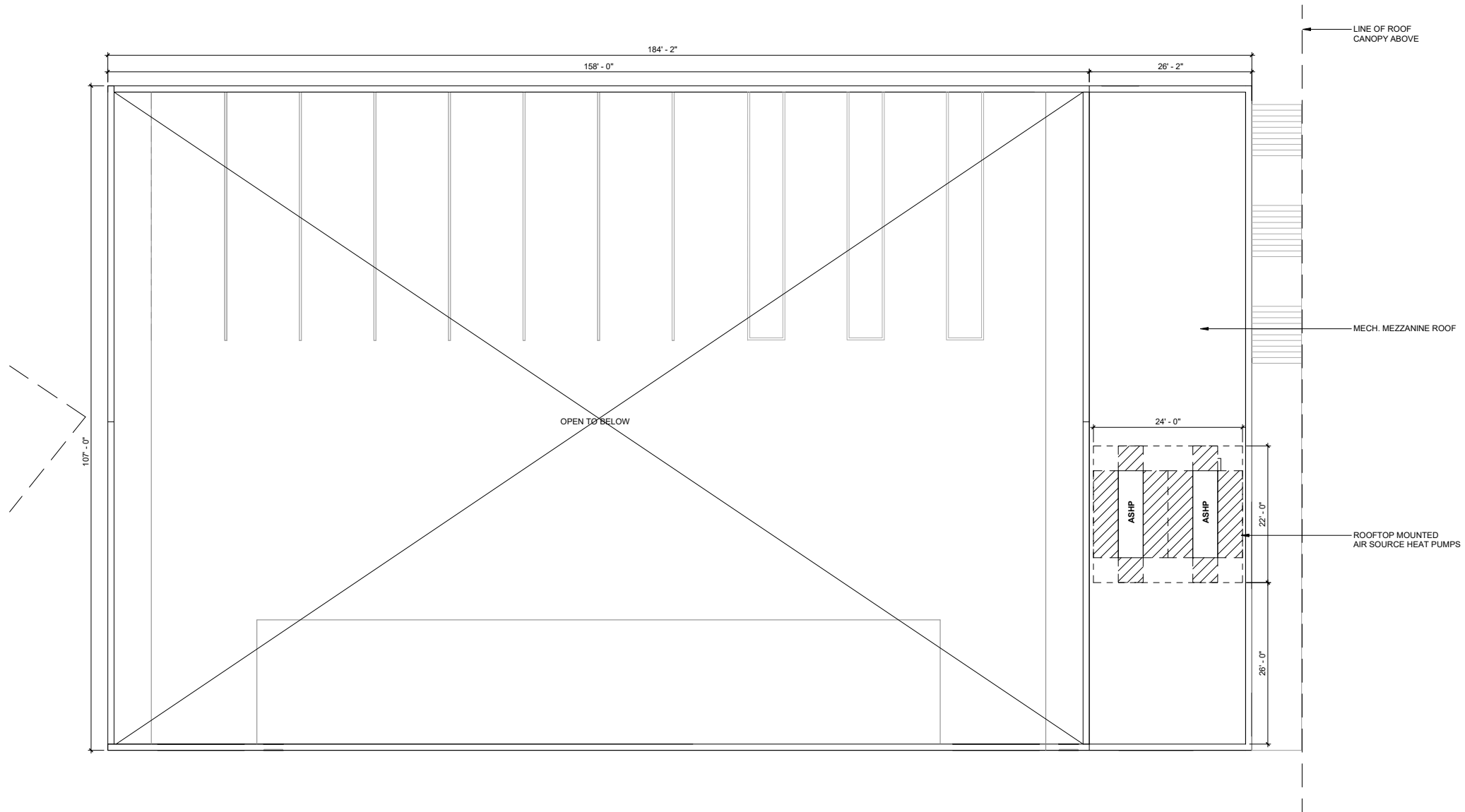
9611 SE 36TH ST, MERCER ISLAND, WA 98040  
OWNED BY CITY OF MERCER ISLAND  
9611 SE 36TH ST, MERCER ISLAND, WA 98040

northwest studio ARCHITECTS URBAN DESIGNERS  
1205 E PIKE ST, 2F, SEATTLE, WA 98122 206.788.8156

DRAFT

OPERATIONS BLDG - LEVEL 2  
FLOOR PLAN

A-112.00



**1** OPERATIONS MECH. MEZZANINE PLAN  
1" = 10'-0"



**MERCER ISLAND PUBLIC SAFETY  
& MAINTENANCE FACILITIES**

9611 SE 36TH ST, MERCER ISLAND, WA 98040  
OWNED BY **CITY OF MERCER ISLAND**  
9611 SE 36TH ST, MERCER ISLAND, WA 98040

**northwest studio** ARCHITECTS URBAN DESIGNERS  
1205 E PIKE ST, 2F, SEATTLE, WA 98122 206.788.8156

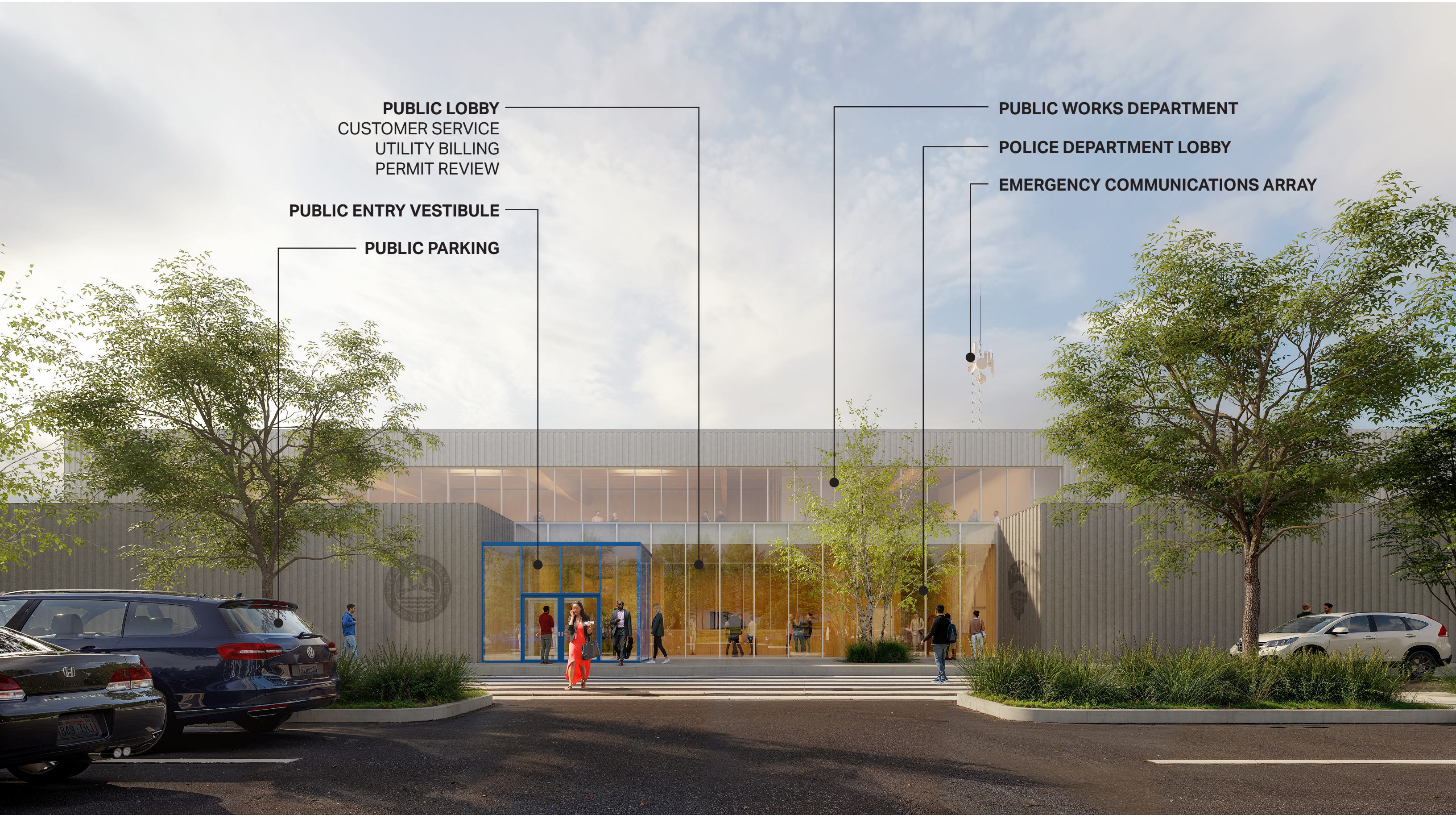
**DRAFT**

OPERATIONS BLDG -  
MEZZANINE PLAN

**A-113.00**

# Schematic Design Renderings

# PSM BUILDING PUBLIC ENTRY



**PUBLIC LOBBY**  
CUSTOMER SERVICE  
UTILITY BILLING  
PERMIT REVIEW

**PUBLIC ENTRY VESTIBULE**

**PUBLIC PARKING**

**PUBLIC WORKS DEPARTMENT**

**POLICE DEPARTMENT LOBBY**

**EMERGENCY COMMUNICATIONS ARRAY**

# INTERIOR VIEW OF THE MERCER ISLAND POLICE DEPARTMENT

Draft

(LIGHTING, HVAC, AND FIRE SUPPRESSION EQUIPMENT  
IN THIS AREA NOT SHOWN)

BRIEFING ROOM

LUNCH & BREAK ROOM

REPORT WRITING AREA



# INTERIOR VIEW OF THE EMERGENCY OPERATIONS CENTER

Draft

(LIGHTING, HVAC, AND FIRE SUPPRESSION EQUIPMENT  
IN THIS AREA NOT SHOWN)

LARGE MEETING ROOM/ EOC CONFERENCE & WORKROOM

SMALL MEETING ROOM/ JOINT-INFORMATION CENTER

EMERGENCY OPERATIONS CENTER OPEN WORKING SPACE  
FLEXIBLE CONFIGURATION

# CITY VEHICLE ENTRY DRIVE TO THE PSM FACILITY



# VIEW OF THE PROTECTIVE CANOPY OVER THE SOUTHERN OPERATIONAL AREA



(LIGHTING AND FIRE SUPPRESSION EQUIPMENT IN THIS AREA NOT SHOWN)  
(OVERHEAD HOISTS IN THIS AREA NOT SHOWN)

OPERATIONS BUILDING VEHICLE MAINTENANCE AND STORAGE AREA

OVERSIZE VEHICLE & TRAILER PARKING

VEHICLE LAY-BY AND LOADING/ UNLOADING

VEHICLE & EQUIPMENT PARKING

VEHICLE PARKING

17'-0" MIN CLEARANCE

# VIEW OF THE PROTECTIVE CANOPY BETWEEN THE OPERATIONS AND PSM BUILDINGS



POLICE DEPARTMENT COVERED AND SECURE PARKING AND DEPLOYMENT ENTRANCE



Draft

EQUIPMENT CLEANUP & RINSE AREA

DEPLOYMENT VESTIBULE

HOT-SWAP VEHICLE SUPPORT ZONE

SALLYPORT ENTRANCE

# INTERIOR VIEW OF THE OPERATIONS BUILDING VEHICLE MAINTENANCE AND STORAGE AREA



(LIGHTING, HVAC, AND FIRE SUPPRESSION EQUIPMENT IN THIS AREA NOT SHOWN)  
(OVERHEAD HOISTS IN THIS AREA NOT SHOWN)

20'-0" MIN CLEARANCE  
TO ALLOW VEHICLE LIFTING FOR MAINTENANCE

WALL SURFACES FOR MATERIAL & EQUIPMENT STORAGE RACKS

PROTECTED VEHICLE STORAGE & MAINTENANCE BAYS

EQUIPMENT STORAGE & MAINTENANCE

+/- 13'-6" VEHICLE HEIGHT

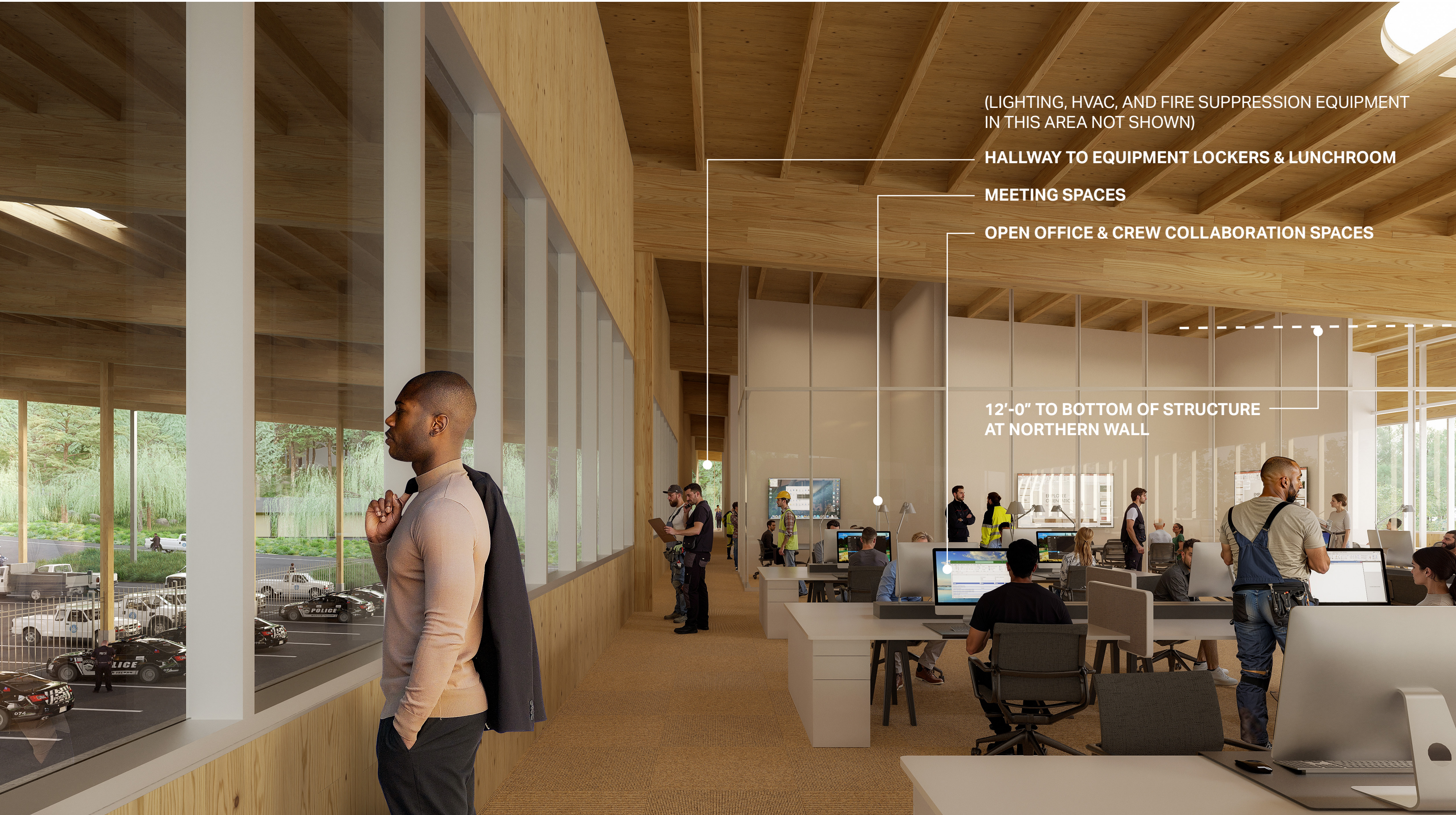
# INTERIOR VIEW OF THE OPERATIONS BUILDING WAREHOUSE



Draft

- PSM BUILDING
- COVERED OPERATIONS AREA
- LOADING & UNLOADING ZONE
- WAREHOUSE RACKING

# INTERIOR VIEW OF THE PUBLIC WORKS OFFICE AREAS IN THE PSM BUILDING



(LIGHTING, HVAC, AND FIRE SUPPRESSION EQUIPMENT  
IN THIS AREA NOT SHOWN)

HALLWAY TO EQUIPMENT LOCKERS & LUNCHROOM

MEETING SPACES

OPEN OFFICE & CREW COLLABORATION SPACES

12'-0" TO BOTTOM OF STRUCTURE  
AT NORTHERN WALL

# OVERHEAD VIEW OF THE PSM FACILITY SITE DEVELOPMENT



**OPERATIONS BUILDING (BELOW)**

**COVERED POLICE DEPARTMENT & PUBLIC WORKS OPERATIONS**

**PSM BUILDING**

**PUBLIC & STAFF PARKING**

**PUBLIC ENTRANCE**

**UPPER YARD**

DECANT FACILITY  
WASTE & RECYCLING  
ORGANICS

**LOWER YARD**

FUELING STATIONS  
RAW MATERIAL STORAGE  
MATERIAL LAY-DOWN

DETAIL VIEW OF THE UPPER YARD DECANT FACILITY

