

Pioneer Park & Engstrom Open Space

Trails and Restoration Work Plan 2025

Open Space Conservancy Trust
City of Mercer Island



Overview of restoration approach

- Comprehensive weed removal includes:
 - removal of ivy from around trees (ivy rings)
 - invasive tree removal and treatment
 - ground ivy and herbaceous weed removal.
- Three (3) years of comprehensive weed removal, then
- Maintenance every 4-5 years after
- Planting trees and shrubs in understory and canopy gaps
 - Replacing aging canopy
 - Aiding forest regeneration



Photo by Abhinav Sunil.

Summary of 2024 Restoration and Trails Work

- Year 1 Removal in 11 acres.
- Year 2 Removal in 10.4 acres.
- Year 3 Removal in 8.8 acres.
- Weed Removal Maintenance in 8.8 acres.
- Planted 821 native trees and shrubs.
- Graveled, brushed, cleared trails.
- Hosted 32 volunteer events and 377 volunteers for 840 hours.



Photo by Taylor Comodo.



2025 Restoration and Trails Work Plan

- Year 1 Removal in 11.9 acres.
- Year 2 Removal in 13 acres.
- Year 3 Removal in 10.4 acres.
- Weed removal maintenance in 3.2 acres.
- Ivy Rings on 3 acres.
- Planting maintenance & watering of previous year's plants.
- Continue with mulching and planting grass strips along Island Crest Way.
- Volunteer weed removal and planting.
- Gravel, brush, clear trails.
- Maintain trail culverts and water flow infrastructure.



Pioneer Park NW- 2025

CONTRACTOR WORK

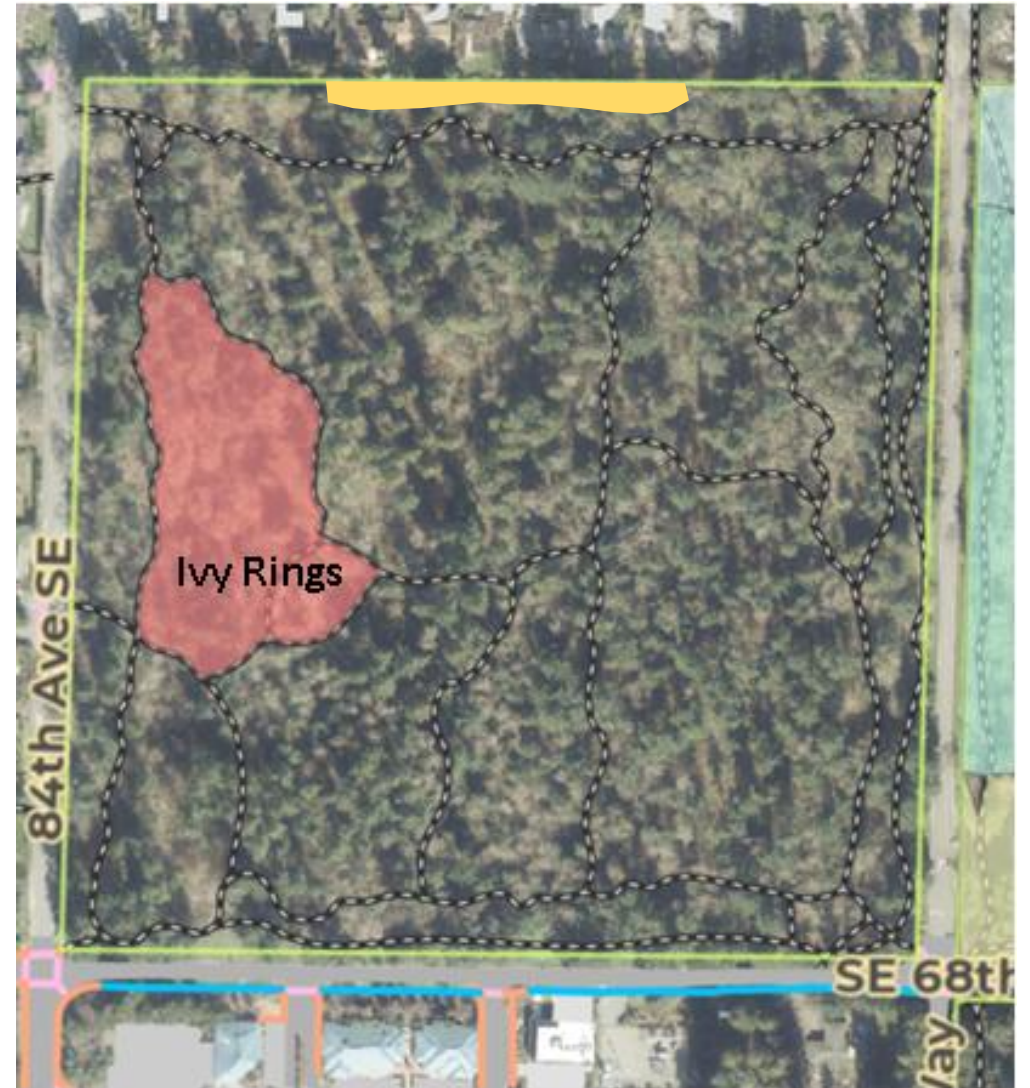
- Ivy rings on 3 acres (red).

NATURAL RESOURCES CREW

- Yellow archangel monitoring and management (yellow).
- Continued maintenance of 84th Ave planting strip.
- Gravelling muddy sections of trail, brushing, blowing leaves.

VOLUNTEERS

- Blackberry removal along western edge of quadrant.



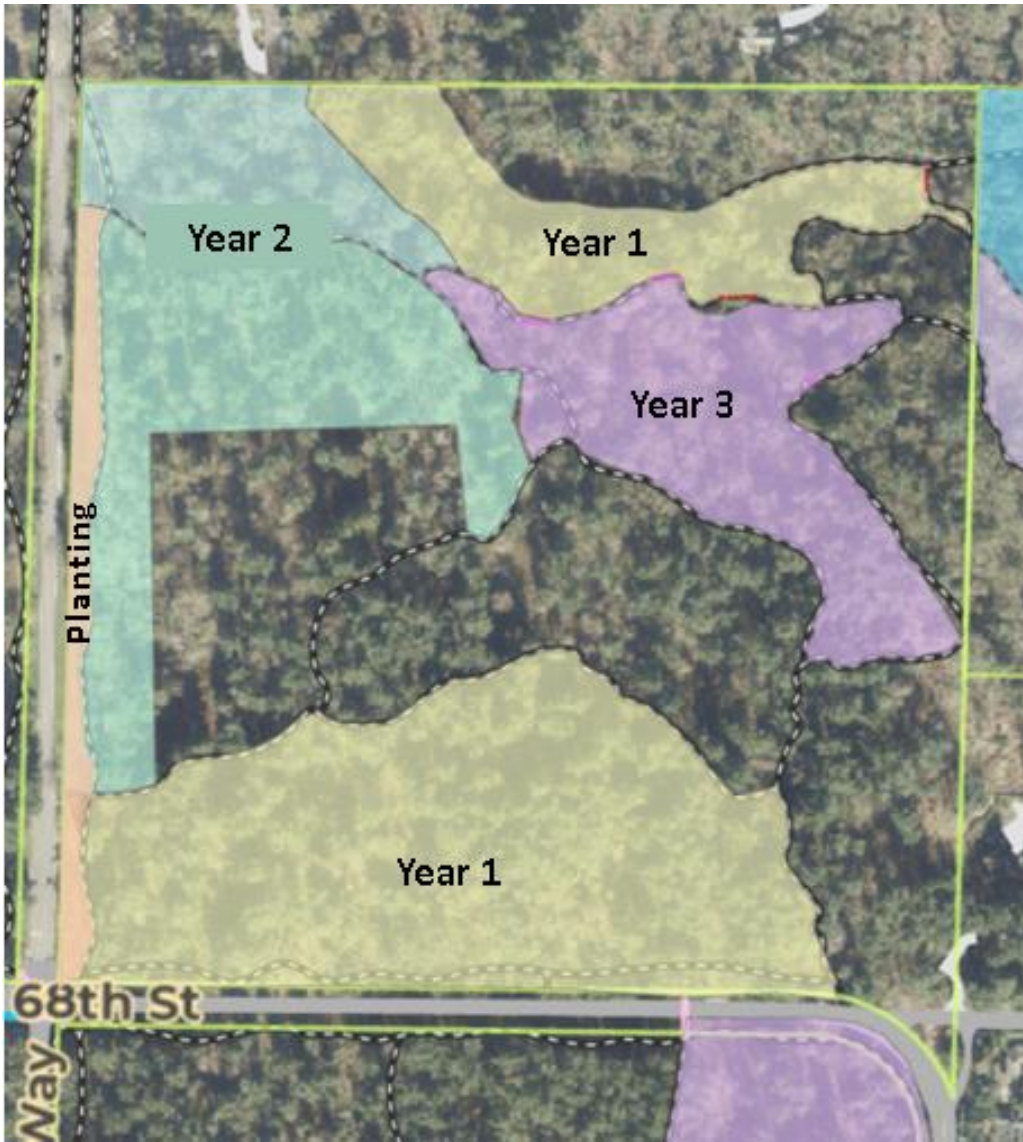
Pioneer Park NE- 2025

CONTRACTOR WORK

- Year 1 weed removal on 11.9 acres (yellow).
- Year 2 weed removal on 7.6 acres (green).
- Year 3 weed removal on 4 acres (purple).
- Planting along west perimeter (orange).

NATURAL RESOURCES CREW

- Noxious weed monitoring throughout park.
- Mulching and planting into grass along ICW.
- Planting maintenance and watering on perimeter.
- Gravelling muddy sections of trail, brushing, blowing leaves.
- Addressing root intrusions and uneven surfacing on trails.



Pioneer Park SE- 2025

CONTRACTOR WORK

- Year 2 weed removal on 5.4 acres (green).
- Year 3 weed removal on 4.7 acres (purple).

NATURAL RESOURCES CREW

- Noxious weed monitoring throughout park.
- Archangel monitoring and management (bright yellow)
- Gravelling muddy sections of trail, brushing, blowing leaves.
- Planting Maintenance and watering (Blue).

VOLUNTEER STEWARDSHIP

- Initial weed removal and ivy rings (yellow)





Engstrom Open Space- 2025

CONTRACTOR WORK

- Weed removal maintenance on 3.2 acres (blue).
- Year 3 weed removal on 1.8 acres (purple).

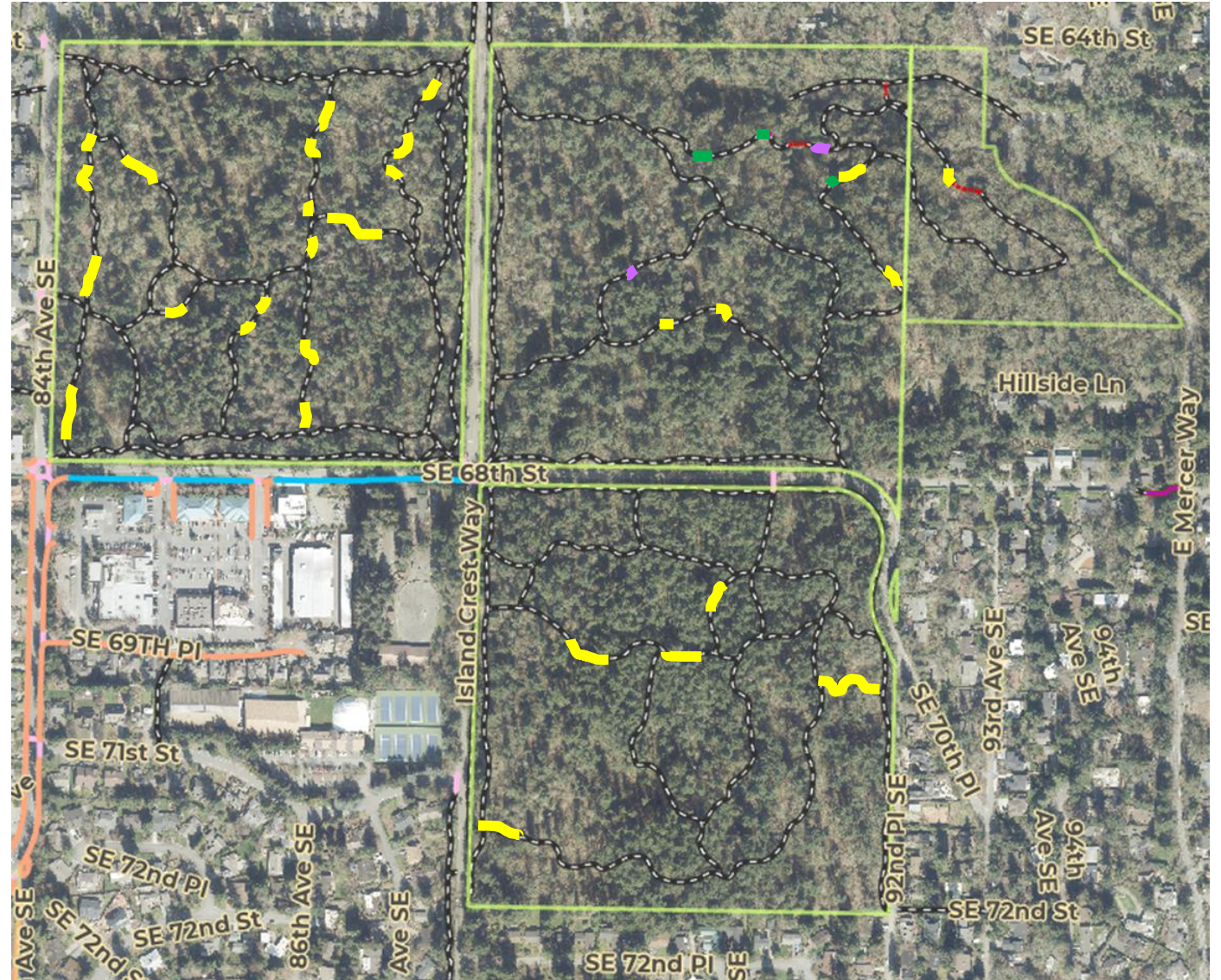
NATURAL RESOURCES CREW

- Noxious weed monitoring along stream.
- Gravelling muddy sections of trail, brushing, blowing leaves.
- Culvert maintenance, brushing, blowing, clearing.

Work Plan Summary



- Leaf blowing: All trails



Examples of re-gravelling/ water management needs



Examples of root intrusions and stair repairs



