



# Department Report April 29<sup>th</sup>, 2025

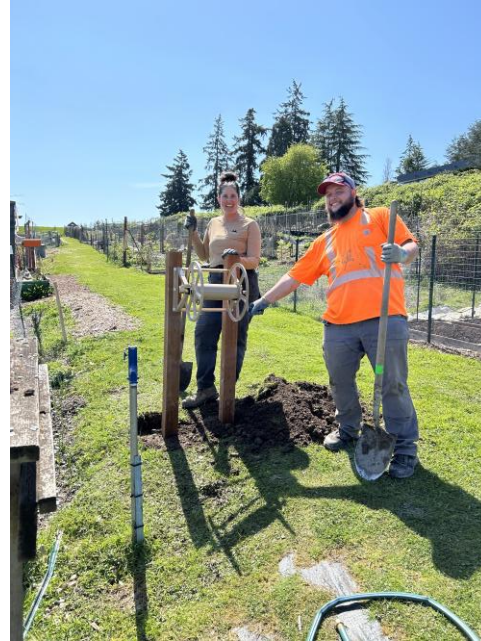
Open Space  
Conservancy Trust





# Department Updates:

- Parks and Rec completed project organizing plots, adding water connections and hose reels at the P- Patch
- Thank you Team Member Tyler Shaw!
- Clarke family bench donation at Clarke Beach Park
- Engstrom property updated





# APRIL 2025 EARTH MONTH EVENTS!

**03** Thursday

Native Plant Nursery  
Volunteer event

Caretakers Cottage

12pm-2pm



**05** Saturday

Leap for Green,  
Sustainability Fair



Mercer Island Community  
Center

10am-1pm

**09** Thursday

Automatic Sprinkler  
System

Virtual Workshop

6-7:30pm



**10** Thursday

Forest Steward  
Orientation

Luther Burbank Park

5-7pm



**12** Saturday

Volunteer Work Party

Pioneer Park

10am-12pm



**15** Tuesday

Recology Tour

Recology MRF, Seattle

1pm-2:30pm



**19** Saturday

Volunteer Work Party

Upper Luther Burbank  
Park

10am-1pm

**22** Tuesday

**Earth Day** Mindfulness  
Walk!

Pioneer Park

11am-12pm



**25** Friday

BioBlitz Volunteer  
Event

Luther Burbank Park

5:30-6:30pm



**26** Saturday

Volunteer Work Party

Ellis Pond

10am-12pm

**04** Sunday

King Count Repair Event

Mercer Island Community  
Center

1:30-4:30pm



Most events require  
registration. Scan the QR  
Code for more info!





# Letterboxing 2025

- Promoted at Leap for Green
- June 1 – October 1
- Pioneer Park Northwest
- Submit completed booklets to MICEC for a certificate and prize.
- Participant recognition at October OSCT meeting.



# 2022 Parks Levy Update

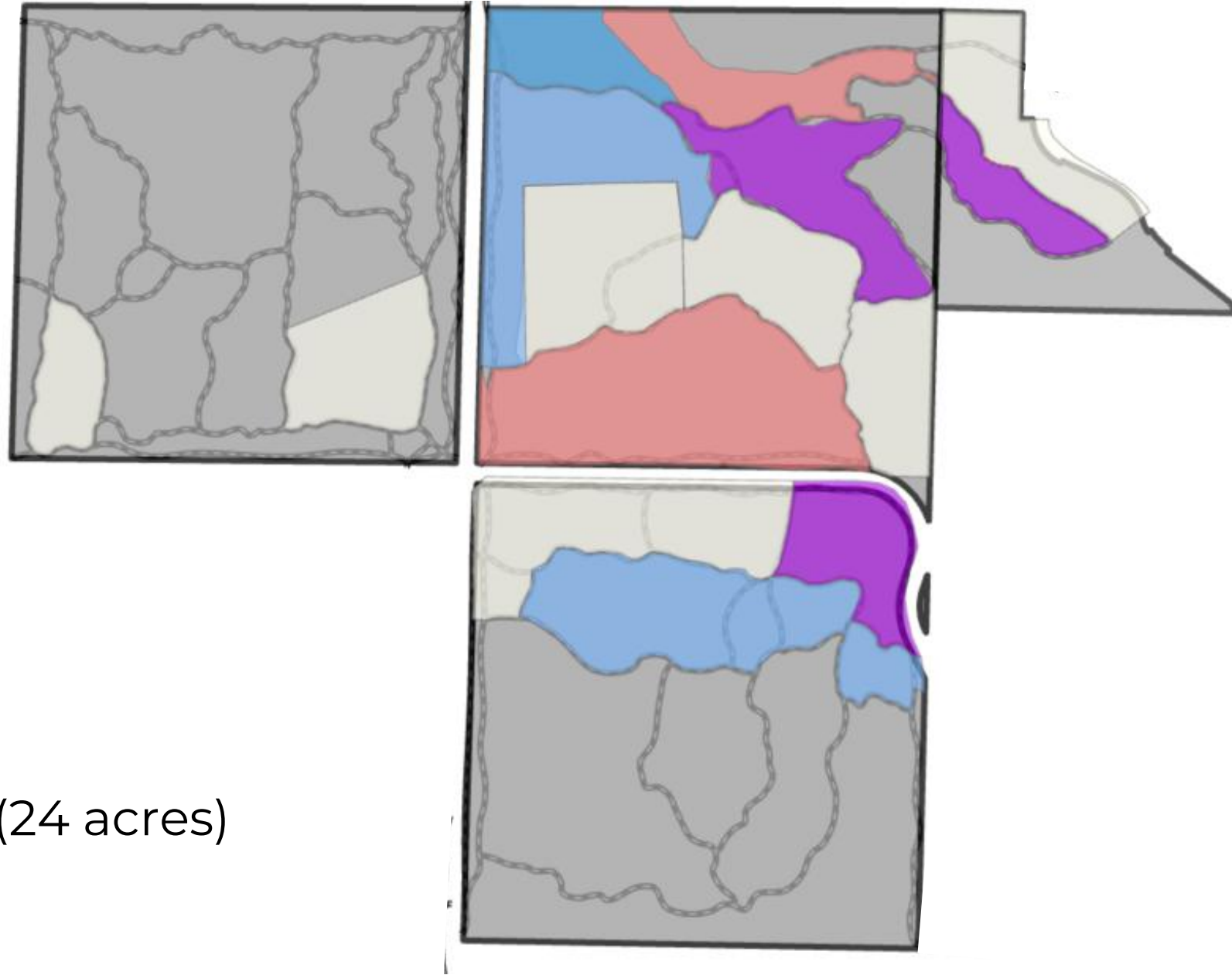
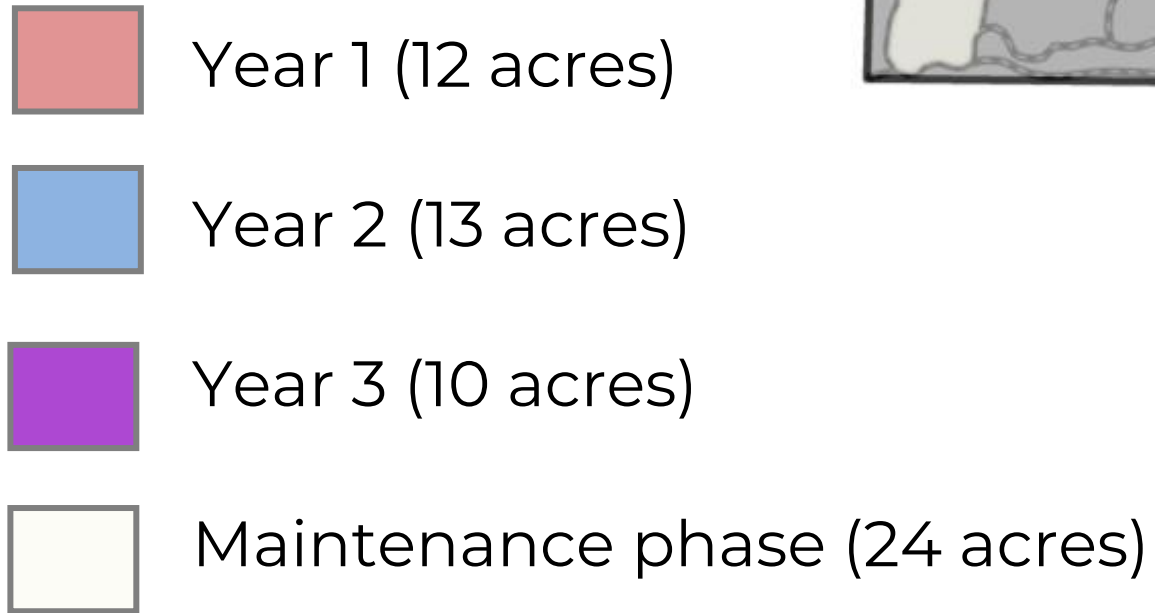
- Increased Pioneer Park and Engstrom funding from \$191,200 to \$424,493 annually to achieve specific restoration targets.
- Across all 122 acres of Trust property
  - Ivy rings – 3 consecutive years
  - Weedy tree treatment – 3 consecutive years
  - Ground ivy and herbaceous weed removal and treatment – 3 consecutive years
  - Weed removal maintenance – every 4 years after initial treatment
  - Complete initial round of tree planting

# Entering 3<sup>rd</sup> year of levy funding:

- 34 out of 122 acres in active restoration phases
- 24 out of 122 acres in maintenance phase

Restoration Phase	Acreage
Year 1 Comprehensive Removal	12
Year 2 Comprehensive Removal	13
Year 3 Comprehensive Removal	10
Maintenance Phase	24
<b>Total</b>	<b>58</b>

# 2025 Phases



# Playground Replacements - Deane's Children's Park

- On March 18, 2025, City Council approved the scope of work and community engagement plan for the Deane's Children's Park Site Plan
- Staff initiated public engagement for the Site Plan. Input is being gathered through two primary opportunities:
  - Open House: Saturday, May 3 | 10am – 12pm at Island Park Elementary
  - Online Survey: open now through May 12 on Let's Talk
- Feedback will inform development of design concepts that will be presented to community in July. Concepts will be presented to PRC on September 4, 2025.



To participate in the survey, visit [www.mercerisland.gov/dcpq](http://www.mercerisland.gov/dcpq)



# Playground Replacements – Roanoke & First Hill

- **Roanoke Park:** Work continues to build the new drainage system and prepare for new accessible play area surfacing, including installing the crushed rock subgrade and removing old concrete footings leftover from previous playground equipment. Posts for the new swings and spinner have also been installed, and the City's Stormwater team built the pipe connection from the play area drainage to the existing stormwater ditch along 70<sup>th</sup> Ave SE.
- **First Hill Park:** Permits have been issued, and City staff are finalizing the construction schedule with the project team.



[www.mercerisland.gov/playgroundreplacements](http://www.mercerisland.gov/playgroundreplacements)

# Luther Burbank Park Sport Courts

- The pickleball courts have seen LOTS of activity this spring thanks to sunny, dry weather.
- In April, FieldTurf removed the construction fencing and protective tarps so the Parks team could replant the south hill.
- Court surfacing is on track to be installed in early June (weather permitting), and the mural *Summer in the Wetlands* will be restored at the end of that month.
- The courts will be fully closed during court surfacing and may be partially or fully closed for mural work. City staff will share the closure schedule at least 2 weeks ahead of time.
- Join us for the ribbon cutting event on **Friday, July 11, at 4pm.**

[www.mercerisland.gov/lbpcourts](http://www.mercerisland.gov/lbpcourts)





# Volunteer and Outreach events:

- 5/1 Native Plant Nursery
  - 5/5 Gallagher Hill Open Space
  - 5/6 Mindfulness Walk, Pioneer Park
  - 5/8 Pioneer Park
  - 5/15 Spring Plant ID Walk, Pioneer Park
  - 5/17 Luther Burbank
  - 5/20 Bird ID Walk, Luther Burbank
  - 5/21 Volunteer Appreciation Event MICEC
  - 5/31 Pioneer Park
- 
- Please RSVP [mercerisland.gov/calendar](https://mercerisland.gov/calendar)





# 2025 Open Space Conservancy Trust Board Meeting Schedule

- January 16<sup>th</sup>
- April 29<sup>th</sup> (Rescheduled)
- July 17<sup>th</sup>
- October 16<sup>th</sup>

*Quarterly meetings on the third Thursday of the month.  
Meetings will take place from 5pm-7pm.*

January						
S	M	T	W	T	F	S
				1	2	3
				4		
5	6	7	8	9	10	11
12	13	14	15	16	17	18
19	20	21	22	23	24	25
26	27	28	29	30	31	

February						
S	M	T	W	T	F	S
						1
2	3	4	5	6	7	8
9	10	11	12	13	14	15
16	17	18	19	20	21	22
23	24	25	26	27	28	

March						
S	M	T	W	T	F	S
						1
2	3	4	5	6	7	8
9	10	11	12	13	14	15
16	17	18	19	20	21	22
23	24	25	26	27	28	29
30	31					

April						
S	M	T	W	T	F	S
				1	2	3
				4	5	
6	7	8	9	10	11	12
13	14	15	16	17	18	19
20	21	22	23	24	25	26
27	28	29	30			

May						
S	M	T	W	T	F	S
				1	2	3
4	5	6	7	8	9	10
11	12	13	14	15	16	17
18	19	20	21	22	23	24
25	26	27	28	29	30	31

June						
S	M	T	W	T	F	S
						1
						2
3	4	5	6	7		
8	9	10	11	12	13	14
15	16	17	18	19	20	21
22	23	24	25	26	27	28
29	30					

July						
S	M	T	W	T	F	S
				1	2	3
				4	5	
6	7	8	9	10	11	12
13	14	15	16	17	18	19
20	21	22	23	24	25	26
27	28	29	30	31		

August						
S	M	T	W	T	F	S
					1	2
3	4	5	6	7	8	9
10	11	12	13	14	15	16
17	18	19	20	21	22	23
24	25	26	27	28	29	30
31						

September						
S	M	T	W	T	F	S
						1
						2
3	4	5	6	7	8	9
10	11	12	13	14	15	16
17	18	19	20	21	22	23
24	25	26	27	28	29	30

October						
S	M	T	W	T	F	S
				1	2	3
				4	5	
6	7	8	9	10	11	12
13	14	15	16	17	18	19
20	21	22	23	24	25	26
27	28	29	30	31		

November						
S	M	T	W	T	F	S
						1
2	3	4	5	6	7	8
9	10	11	12	13	14	15
16	17	18	19	20	21	22
23	24	25	26	27	28	29
30						

December						
S	M	T	W	T	F	S
						1
						2
3	4	5	6	7	8	9
10	11	12	13	14	15	16
17	18	19	20	21	22	23
24	25	26	27	28	29	30
31						