

# Luther Burbank Dock Reconfiguration and Repair Design Charrette

August 6, 2020

Mercer Island & via Zoom teleconferencing



WASHINGTON STATE DEPT OF  
**NATURAL  
RESOURCES**

# Introductions and Roles

- **City Staff** – navigate the agenda, provide context, record comments
- **Consultants** – frame choices, provide information
- **Stakeholders** – provide a range of perspectives
- **Individual participants** – observe, add perspectives not previously expressed



# Participant Introductions

- City staff
- Consultants
- Dept. of Natural Resources staff (landowner)
- City Council
- Parks and Recreation Commission
- Arts Council
- YFS Foundation
- Other organizations
- Individuals

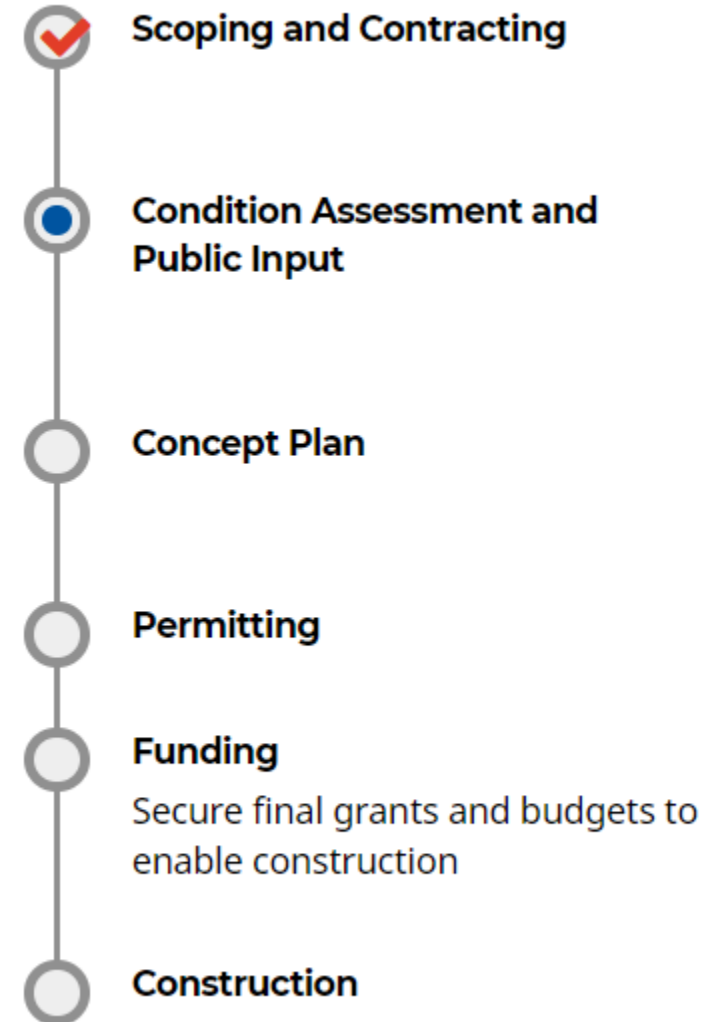




# Where are we in the process?

- ✓ Scoping and Contracting
- ✓ Condition Assessment
- **Design Charrette**
  - Design Alternatives
  - Online Open House – end of August
  - Preferred Alternative
  - Parks and Rec Commission
  - City Council approve concept

## Timeline



# Objectives for the Design Charrette

**GOAL: Develop a concept plan for the waterfront that centers on small boat recreation.**

- Understand the technical issues involved
- Share ideas and different perspectives
- Consider the range of opinions expressed
- Give the design team (City and consultants) constructive feedback



# Focus Areas

1. Floating Docks
2. Breakwater
3. Accessibility
4. Placemaking

# Procedure

- a. Presentation of issues
- b. Clarifying questions –all
- c. Initial impressions from stakeholders
- d. Public input
- e. Reactions and Prioritization exercise

# Ground rules for the meeting

- Raise hand (Zoom) when you want to speak
- Mute when you are not speaking, unmute when you are called on
- Turn video off if you are not actively participating
- Do not restate opinions that have already been expressed and recorded





# Tips for a good meeting

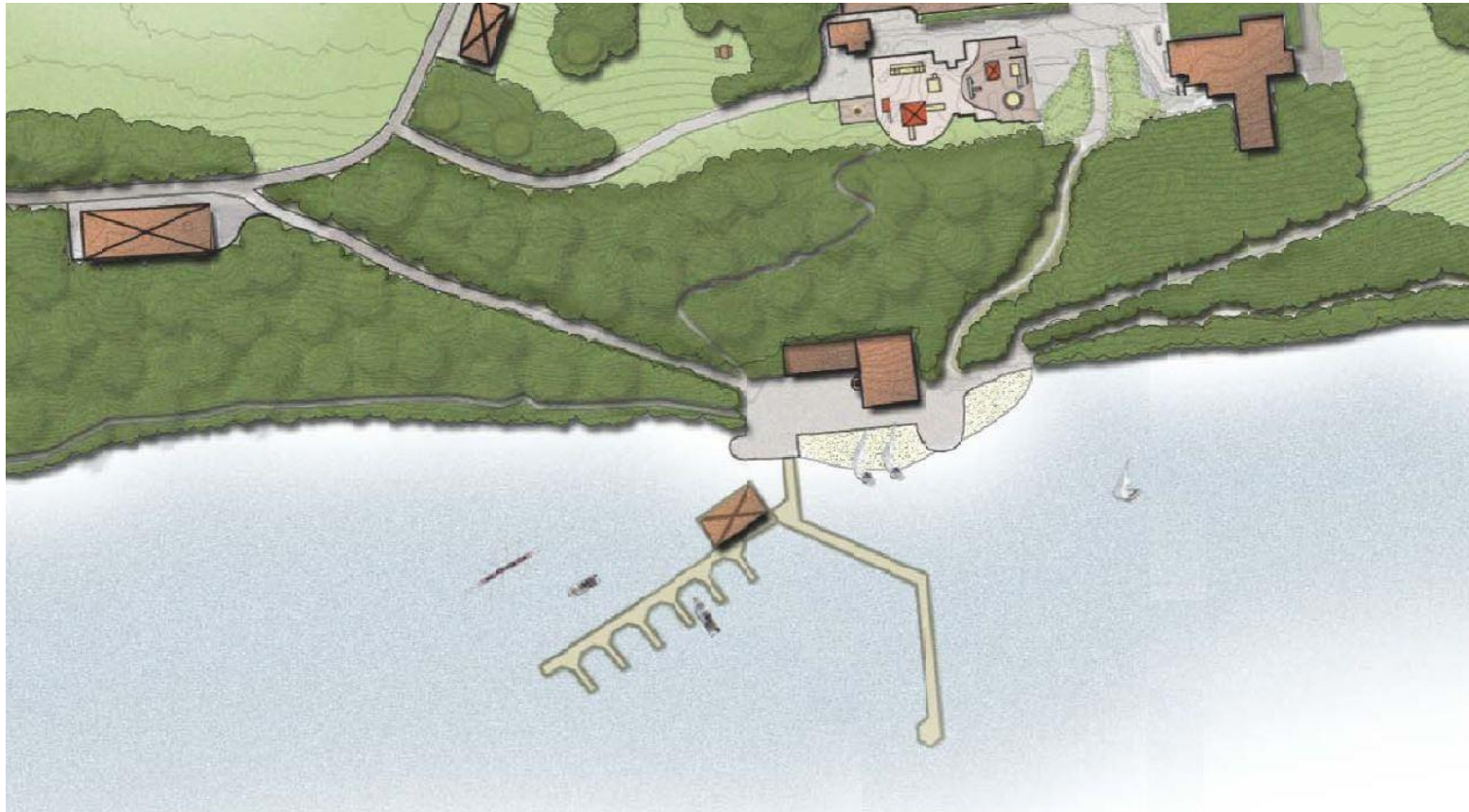
- Focus on topics that are of interest.
- Pace yourself. It's OK to step away if needed.
- Step back and look at the big picture periodically.
- Use Chat to put questions into the queue, not for commenting.
- Be patient with the new technology and format.
- Follow up on Let's Talk with additional comments.





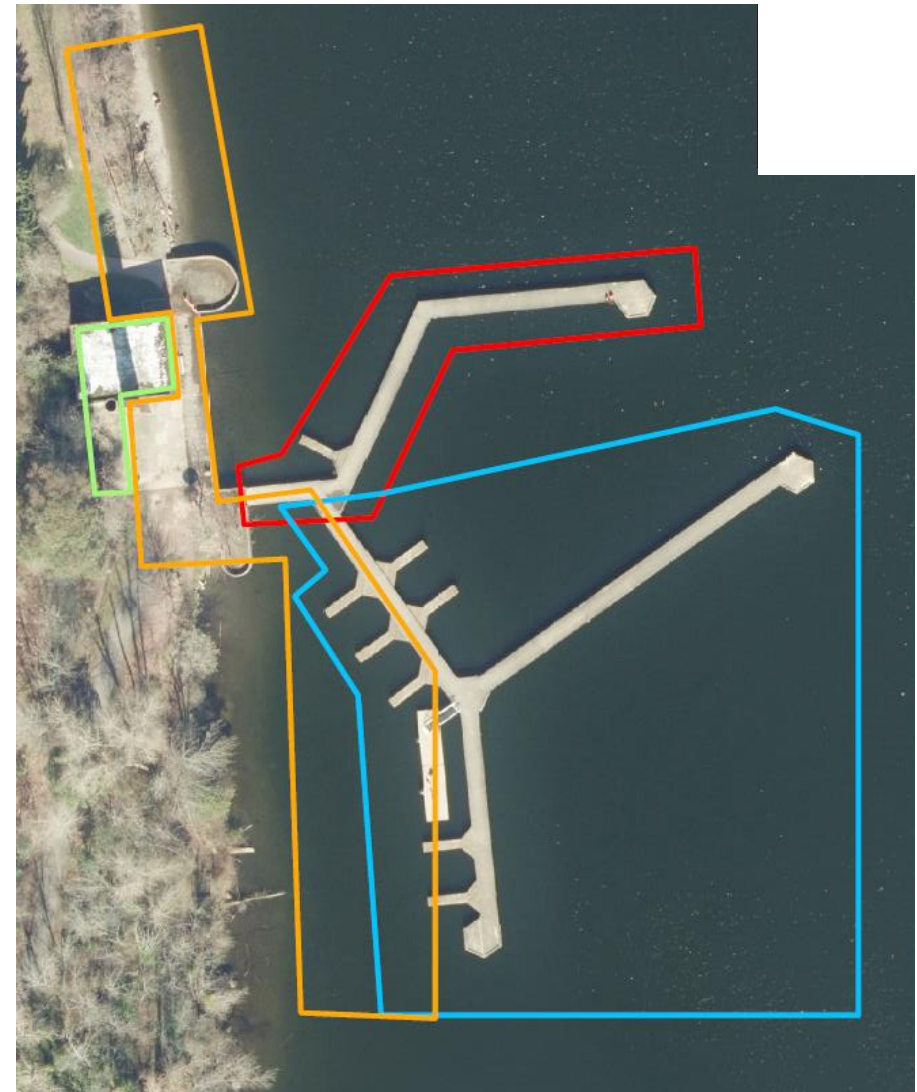
# Overview of the Project

Luther Burbank Master Plan (2006) provides the conceptual vision for the waterfront. The focus is on paddlecraft, small boats and shoreline access.



# Overview of the Project

- Dock Reconfiguration – replace south piers with floating docks for better boating access
- Dock Repair – Retain and renovate north pier
- Access and Placemaking – improve shoreline access, provide ADA access, provide for non-boating uses of the waterfront.





# Project Limitations

- Physical – topography, existing structures
- Environmental – highly regulated environment and on leased aquatic shorelands
- Financial – Grant programs limits, Parks Operations Levy expires in 2023





# Project Grant Sources

	Project Component	Grant Limit	Match Requirement
Boating Facilities Program (state)	Floating docks for small powerboats	\$1,000,000	25%
Boating Infrastructure Grant (federal)	Fixed piers for large powerboats	\$1,440,645	25%
Aquatic Lands Enhancement Account (state)	Shoreline access and small paddlecraft	\$1,000,000	50% (currently 25%)
Land and Water Conservation Fund (federal)	Shoreline access	\$960,430	50%

# Focus Areas

- Floating Docks
- Breakwater
- Accessibility
- Placemaking

# Procedure

- a. Presentation of issues
- b. Clarifying questions
- c. Initial impressions
- d. Public input
- e. Reactions and  
Prioritization exercise

# On BREAK

Luther Burbank Dock  
Reconfiguration and Repair  
Design Charrette

