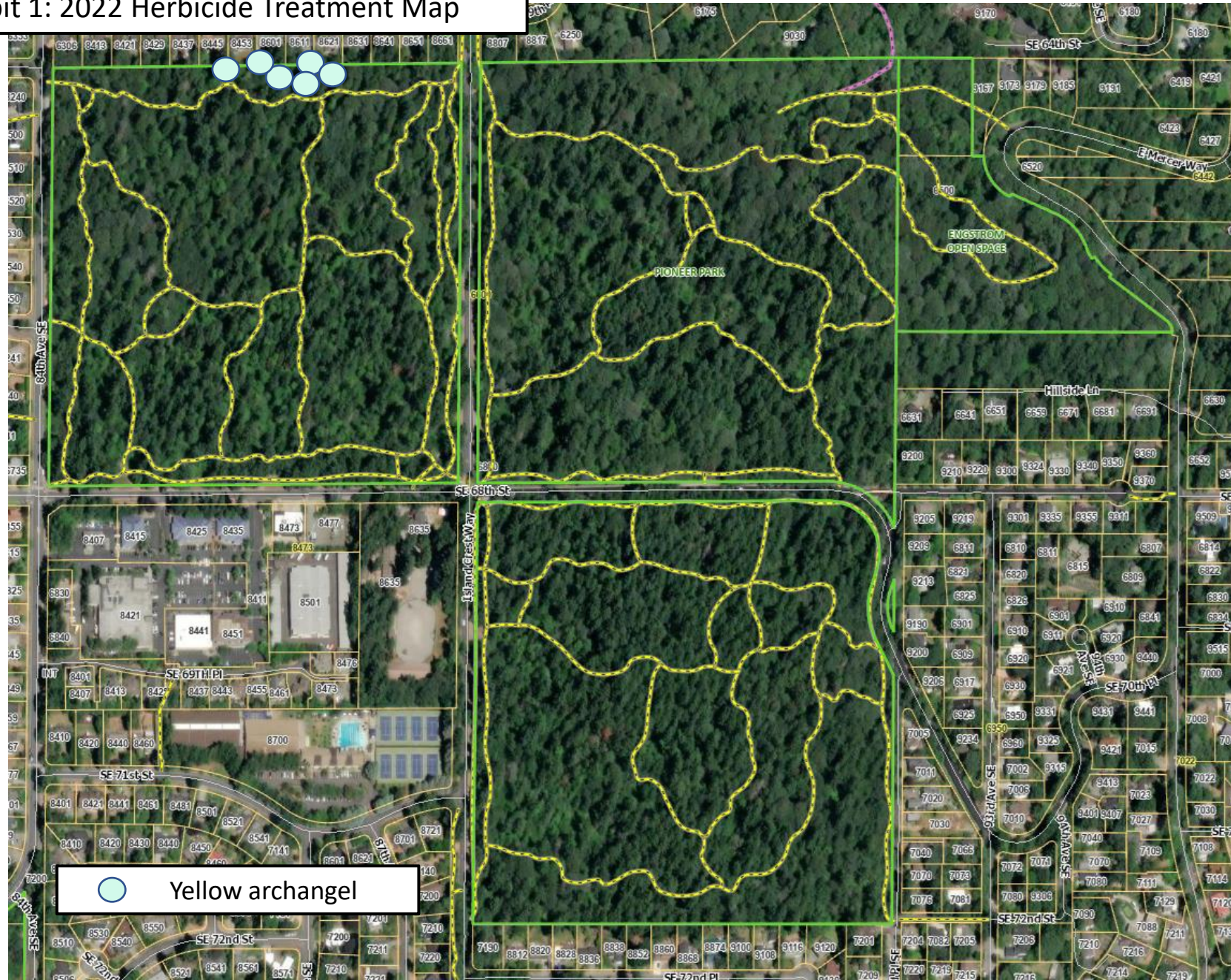


# Pioneer Park and Engstrom Open Space Exhibit 1: 2022 Herbicide Treatment Map



# Pioneer Park and Engstrom Open Space

## Exhibit 2: 2023 Noxious Weed Monitoring and Planned Treatment Map



\*Highlighted locations will receive treatment if non-native trees are found. These are sites where work is contracted for 2023. This map does not represent a full survey of all non-native trees on Trust property.

# Yellow archangel

- Fast-growing, herbaceous perennial
- Spreads by stem fragments, root fragments, and seeds
- Class B noxious weed in King County- control is recommended, not required
- Hand pull small patches
- To be treated this fall using glyphosate + triclopyr + surfactant (spreader-sticker)



# Invasive Tree Treatment

- English laurel (*Prunus laurocerasus*)
  - English holly (*Ilex aquifolium*)
  - European mountain ash (*Sorbus aucuparia*)
  - English hawthorn (*Crataegus monogyna*)
  - wild cherry (*Prunus avium*)
  - Portugal laurel (*Prunus lusitanica*)
  - black locust (*Robinia pseudoacacia*)
  - cherry plum (*Prunus cerasifera*)
  - tree-of-heaven (*Ailanthus altissima*)
- EZ-Ject lance for larger trees
  - Cut and paint for smaller trees

