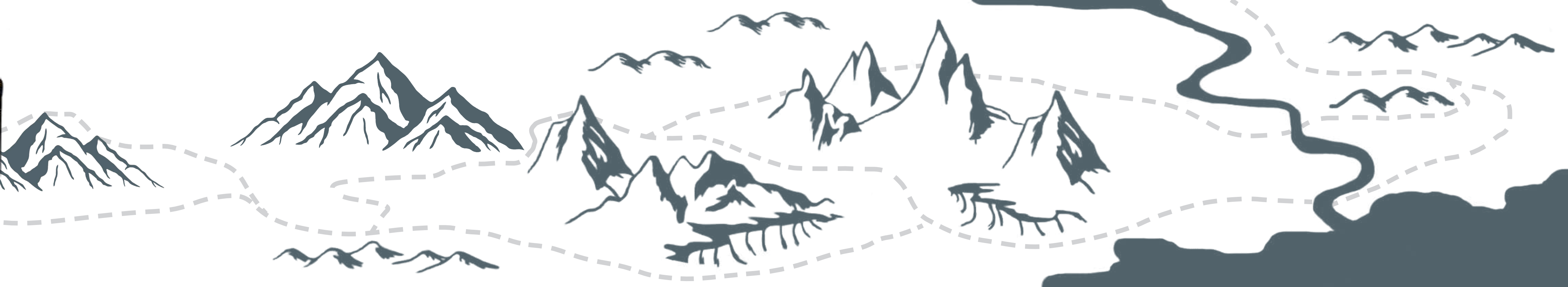


THE QUEST



- 1 ARRIVAL**
The main entrance welcomes visitors with a drawbridge inspired gateway, setting the tone for an imaginative adventure within the park.
- 2 STORYBOOK VILLAGE**
Tucked near the park entrance, this village is designed for young children to begin their adventure with imaginative shops like a bakery, blacksmith, or forest cafe. Kids can enjoy:
 - Whimsical play houses that inspire creative storytelling (Building names could recognize community donors)
 - Multi-sensory, imaginative play with features like sand areas
- 3 JOURNEY TO KENTON'S DRAGON**
This sensory-rich path invites kids to explore on their way to Kenton's Dragon. Along the way, kids can:
 - Navigate changing terrain or textures that mimic a river, with moments of quiet play in mushroom houses, log tunnels, and among woodland creatures
 - Just beyond Kenton's Dragon, a treasure chest awaits discovery!
- 4 ADVENTURER'S GUILD**
Beyond the village lies the City - a central hub inspired by an Adventurer's Guild. This area includes a shelter, restrooms, and seating - offering a place to gather and rest. A central artistic wayfinding feature helps guide explorers on their quest through the park.
- 5 CASTLES ALONG THE QUEST**
This area invites children to explore a series of castle-themed play structures, each offering a unique way to climb, imagine, and discover. Designed for a wide range of ages and abilities, these spaces blend inclusive design with imaginative adventure. From gently sloped ramps and sensory pathways to more challenging climbers - like the hilltop castle - kids can choose their own pace and path.

The experience balances active play - swinging, spinning, and rocking - with quiet moments, so every child can enjoy the magic of the quest.
- 6 THE FAIRY GLEN**
Tucked among trees and ferns, the Fairy Glen offers a peaceful woodland spot for quiet play, musical discovery, and gentle exploration.

This early concept plan was developed from input gathered during previous community engagement activities. Concepts are subject to change through additional community engagement and design work.



WOODSY WONDERS



This early concept plan was developed from input gathered during previous community engagement activities. Concepts are subject to change through additional community engagement and design work.

1 ARRIVAL & FOREST PATH

As you arrive, you'll be greeted by natural wood materials that set the tone for a forest-inspired, treehouse-themed experience. The forest path acts as the central spine, connecting major elements of the playground and ensuring accessibility for all visitors.

- It begins at the park entrance, leads to various play areas, and ends at a large treehouse climber.
- The northern part of the forest path can be designed as an elevated walkway, offering unique views and playful interactions.

2 CRITTER CORNER

Tucked near the park entrance, this play area is designed for children ages 2 - 5. Here, little ones can discover forest animals, climb on nature inspired structures, and enjoy:

- Spaces for exploration and imaginative play
- Sensory friendly features
- Cozy spots for quiet breaks

3 DISCOVERY PATH

Designed for younger explorers, this is a playful loop that weaves through nature-inspired activities - blending movement, imagination, and moments of calm. Along the way, kids can:

- Balance, climb, and crawl through a woodland adventure
- Pause for quiet moments and seating nestled in the woods
- End at an accessible treehouse structure that connects to the adventure hub and leads to Kenton's Dragon.

4 PICNIC SHELTER & RESTROOM AMENITIES

This central area will feature structures with a natural aesthetic to blend into the park's rustic, forest-inspired setting and create a welcoming place for families to gather, rest, and connect. Donor recognition could be integrated onto the restroom walls - similar to a tile wall display.

5 TREEHOUSE ADVENTURE HUB

This playground brings the magic of the forest to life with a variety of treehouse-style play experiences designed for a wide range of ages and abilities. From fully inclusive post-and-platform structures to swings, every child can find their own way to play, explore, and connect. Highlights include a willow tunnel for quiet discovery, a rocking 'river raft', and rope climbers for adventurers.

The design blends challenge and accessibility, so every child can join the fun - at their own pace, in their own way.

