



Parks, Recreation & Open Space Plan Update

Parks & Recreation Commission: February 4, 2021

1

2

Presentation Topics

Project Timeline & Major Tasks:

- Virtual Town Hall: March 23
- Second Survey: End of March/Early April

Additional Survey Highlights

Recap of Joint Council Session

Discussion & Next Steps

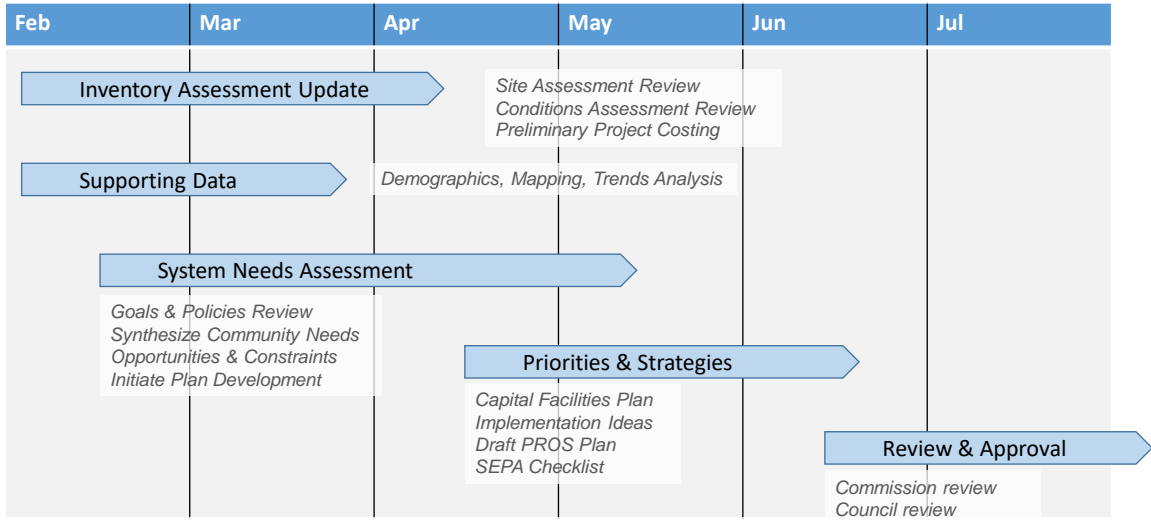


Mercer Island Parks, Recreation & Open Space Plan Update

2

3

Project Timeline

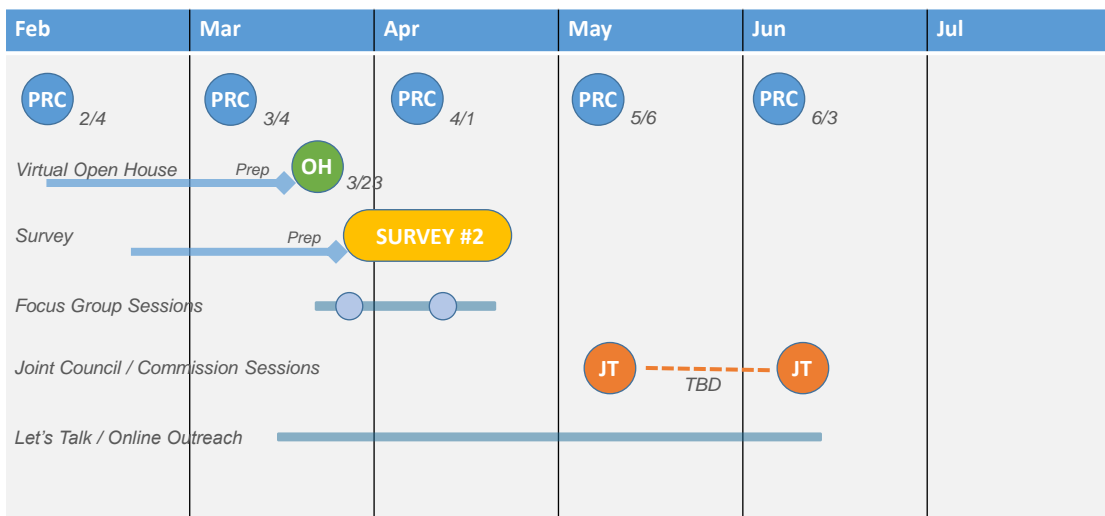


Mercer Island Parks, Recreation & Open Space Plan Update

3

4

Project Timeline



Mercer Island Parks, Recreation & Open Space Plan Update

4

5

Survey #1 Highlights

- Designed in coordination with staff and Park & Recreation Commission
- February – March 2020
- Mailed to 2,500 randomized addresses
- 525 respondents (21% response rate)
- Online survey available to entire community
- Survey datasets kept separated

Mercer Island Parks, Recreation & Open Space Plan Update


City of Mercer Island
Community Survey on Parks and Recreation

Dear Mercer Island Resident:

The City of Mercer Island has begun a community-driven process to update its citywide Parks, Recreation and Open Space Plan (PROS Plan). We need your help to determine how to prioritize projects and where to focus to keep our parks and programs thriving. As an initial step in the process, the City is conducting this short, random-sample survey to assess the community's recreation and facility needs. Additional public engagement will follow, and final review of the Plan is tentatively targeted for the end of 2020. Your opinions are important to the City.

The survey has 17 questions and will only take a few minutes to complete.

If you prefer to take the survey online, use the unique ID number above to access the survey at miprosplan.com or with this QR code:



1. When you think about the things that contribute to the quality of life in Mercer Island, would you say that public parks and recreation opportunities are... (CHECK ONE OPTION)

☐ Essential to the quality of life here ☐ Useful, but not important
☐ Important, but not really essential ☐ Not important at all

How well do you think the City of Mercer Island is meeting your needs for parks, recreation and open spaces? (CHECK ONLY ONE BOX IN EACH ROW)

	Not at all	About the right amount	Not enough	Don't know
Open space & natural areas	<input type="checkbox"/>	<input type="checkbox"/>	<input type="checkbox"/>	<input type="checkbox"/>
Recreation programs (camps & classes)	<input type="checkbox"/>	<input type="checkbox"/>	<input type="checkbox"/>	<input type="checkbox"/>
Indoor recreation facilities	<input type="checkbox"/>	<input type="checkbox"/>	<input type="checkbox"/>	<input type="checkbox"/>
Arts & culture opportunities	<input type="checkbox"/>	<input type="checkbox"/>	<input type="checkbox"/>	<input type="checkbox"/>
Community events	<input type="checkbox"/>	<input type="checkbox"/>	<input type="checkbox"/>	<input type="checkbox"/>

3. How often do you visit or use Mercer Island Parks & Recreation facilities, parks, or open spaces?

☐ At least once a week ☐ A few times over the year
☐ Two or three times a month ☐ Do not visit facilities / parks / open spaces
☐ About once a month ☐ Don't know

4. What would you say are the main reasons you visited Mercer Island Parks & Recreation facilities, parks, or open spaces in the past year? (CHECK ALL THAT APPLY)

<input type="checkbox"/> Adult sports league	<input type="checkbox"/> Outdoor sport courts
<input type="checkbox"/> Beach / waterfront	<input type="checkbox"/> Playgrounds
<input type="checkbox"/> Biking	<input type="checkbox"/> Private event / celebration
<input type="checkbox"/> Boating / watersports	<input type="checkbox"/> Public art viewing
<input type="checkbox"/> Class or camp	<input type="checkbox"/> Relaxation
<input type="checkbox"/> Community events / concerts	<input type="checkbox"/> Public meeting
<input type="checkbox"/> Dog walking / exercise	<input type="checkbox"/> Walking or running
<input type="checkbox"/> Family gatherings / picnics	<input type="checkbox"/> Wildlife viewing
<input type="checkbox"/> Fishing	<input type="checkbox"/> Youth sports league
<input type="checkbox"/> Fitness	<input type="checkbox"/> N/A - I didn't go to Mercer Island parks or open spaces
	<input type="checkbox"/> Other: _____

1,763 completed surveys!

5

6

Survey #1 Highlights

Demographics

- Mail survey skewed slightly older and households without children
- Online survey skewed slightly middle-aged and with children
- Geographic distribution same between both datasets

Age group	Survey Respondents			M.I. Population	
	Mail	Online-only	Combined	Full	Over 20
Under 20	0%	1%	0%	25%	--
20-34	5%	5%	5%	12%	16%
35-44	12%	23%	20%	12%	16%
45-54	19%	33%	28%	17%	23%
55-64	26%	19%	21%	14%	19%
65 and older	39%	20%	26%	20%	27%
Total	100%	100%	100%	100%	100%

Mercer Island Parks, Recreation & Open Space Plan Update

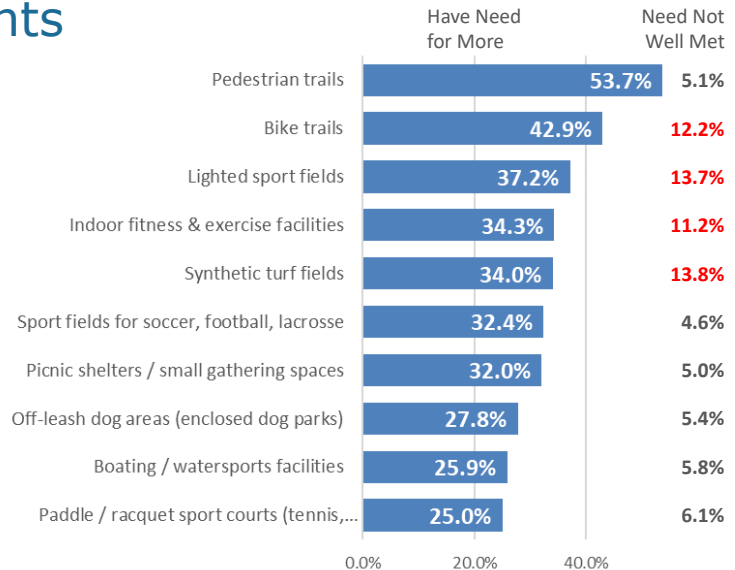
6

7

Survey #1 Highlights

Interest in park system investments

- Synthetic turf fields
- Lighted sport fields
- Indoor fitness & exercise facilities
- Bike trails



Mercer Island Parks, Recreation & Open Space Plan Update

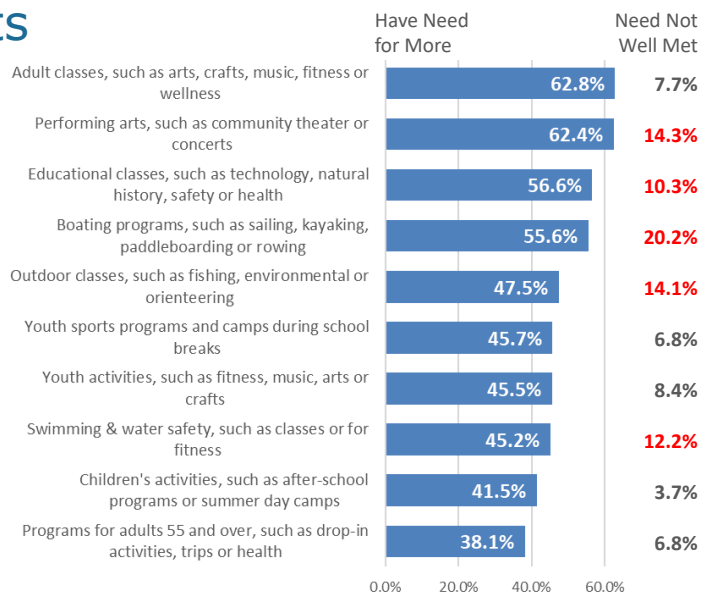
7

8

Survey #1 Highlights

Interest in recreation opportunities

- Boating programs
- Performing arts
- Outdoor classes
- Swimming & water safety
- Educational classes



Mercer Island Parks, Recreation & Open Space Plan Update

8

9

Survey #1 Highlights

Open-ended Responses

- Protect access to nature, trees, and open space for both people and wildlife
- Interest in specific improvements, such as pickleball courts, sports fields, picnic shelters, and park restrooms
- Restore the Summer Celebration, including the parade and fireworks
- Improve water-oriented opportunities, such as splash pads, lifeguards at beaches, improvements to docks at Luther Burbank Park, kayak/canoe/SUP rentals, and creation of sailing/rowing programs

Mercer Island Parks, Recreation & Open Space Plan Update

9

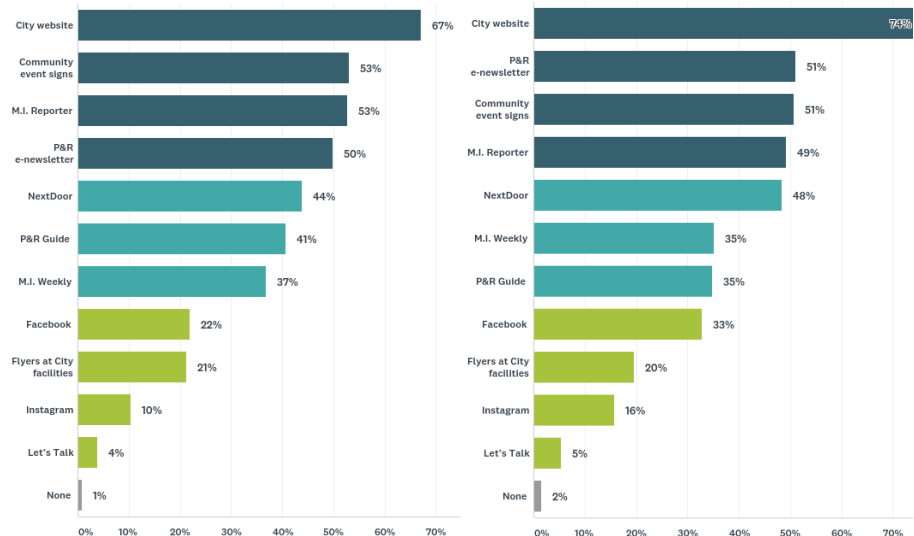
10

Survey #1 Highlights

Information

Channels

- City website
- Event signs
- M.I. Reporter
- P&R Newsletter



Mercer Island Parks, Recreation & Open Space Plan Update

10

11

Joint Session Take-Aways

- Take advantage of the uniqueness of Mercer Island (i.e., water-oriented programs & facilities)
- No net loss of open space – preserve natural areas
- Invasive species management
- Plan for ongoing maintenance & fiscal sustainability
- Concern about recreation programming becoming too commercial
- Explore partnerships & opportunities for volunteers
- Accommodate for diverse range of age groups & abilities (all-inclusive)

Mercer Island Parks, Recreation & Open Space Plan Update



11

12

Discussion Questions

Given what you learned from the first survey and in preparation for the next phase of community engagement:

- What areas/topics should we explore further? Dive into a bit more?
- What additional information do you need from the community to start forming a recommendation on the long-term strategy for the PROS Plan?

Mercer Island Parks, Recreation & Open Space Plan Update



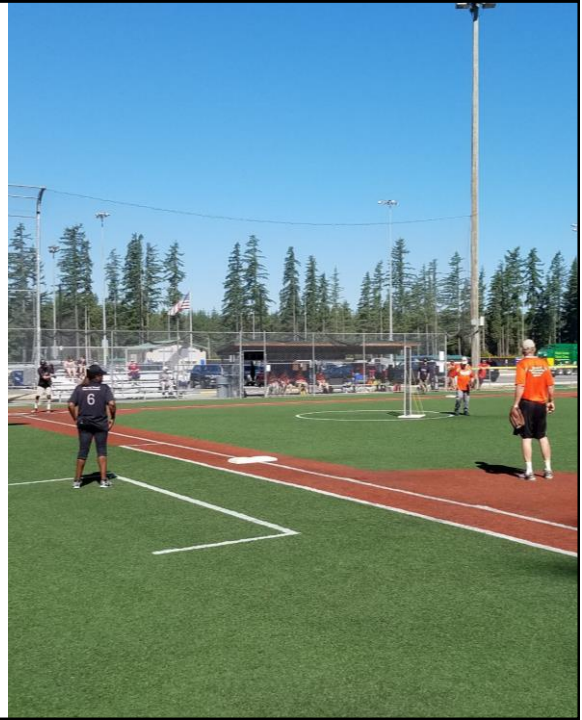
12

13

Next Steps

- The project team will take the feedback from this meeting and begin developing the framework for the March 23 Virtual Open House.
- A second survey will also be developed as a companion to the Virtual Open House for release at the end of March/early April.
- Staff will review plans for the next phase of community outreach with the Parks and Recreation Commission at the **March 4, 2021** meeting.

Mercer Island Parks, Recreation & Open Space Plan Update



13