

# Pioneer Park & Engstrom Open Space

## Trails and Restoration Work Plan 2024

Open Space Conservancy Trust  
City of Mercer Island





# Overview of restoration approach

- Comprehensive weed removal includes:
  - removal of ivy from around trees (ivy rings)
  - invasive tree removal and treatment
  - ground ivy and herbaceous weed removal.
- Three (3) years of Comprehensive weed removal, then
- Maintenance every 4-5 years after
- Planting trees and shrubs in understory and canopy gaps
  - Replacing aging canopy
  - Aiding forest regeneration





# Summary of 2023 Restoration and Trails Work

- Year 1 Removal in 10.4 acres
- Year 2 Removal in 8.8 acres
- Planted 517 native trees and shrubs
- Graveled, brushed, cleared trails
- Decommissioned redundant trail
- Hosted 22 volunteer events and 343 volunteers for 717 hours.





# 2024 Restoration and Trails Work Plan



- Year 1 Removal in 11.8 acres
- Year 2 Removal in 10.4 acres
- Year 3 Removal in 8.8 acres
- Invasive removal maintenance on 8.8 acres
- Planting maintenance & watering of previous year's plants
- Mulching and planting grass strips along Island Crest Way
- Volunteer weed removal and planting
- Gravel, brush, clear trails
- Maintain trail culverts and water flow infrastructure
- Repair Ravine Trail retaining wall



# Pioneer Park NW- 2024

## CONTRACTOR WORK

- Invasive removal maintenance on 1.6 acres (purple).

## NATURAL RESOURCES CREW

- Yellow archangel monitoring and treatment.
- Blackberry management along 84<sup>th</sup> Ave SE parking area (orange).
- Gravelling muddy sections of trail, brushing, blowing leaves.

## WASHINGTON CONSERVATION CORPS

- Infill planting 135 trees and shrubs (green).

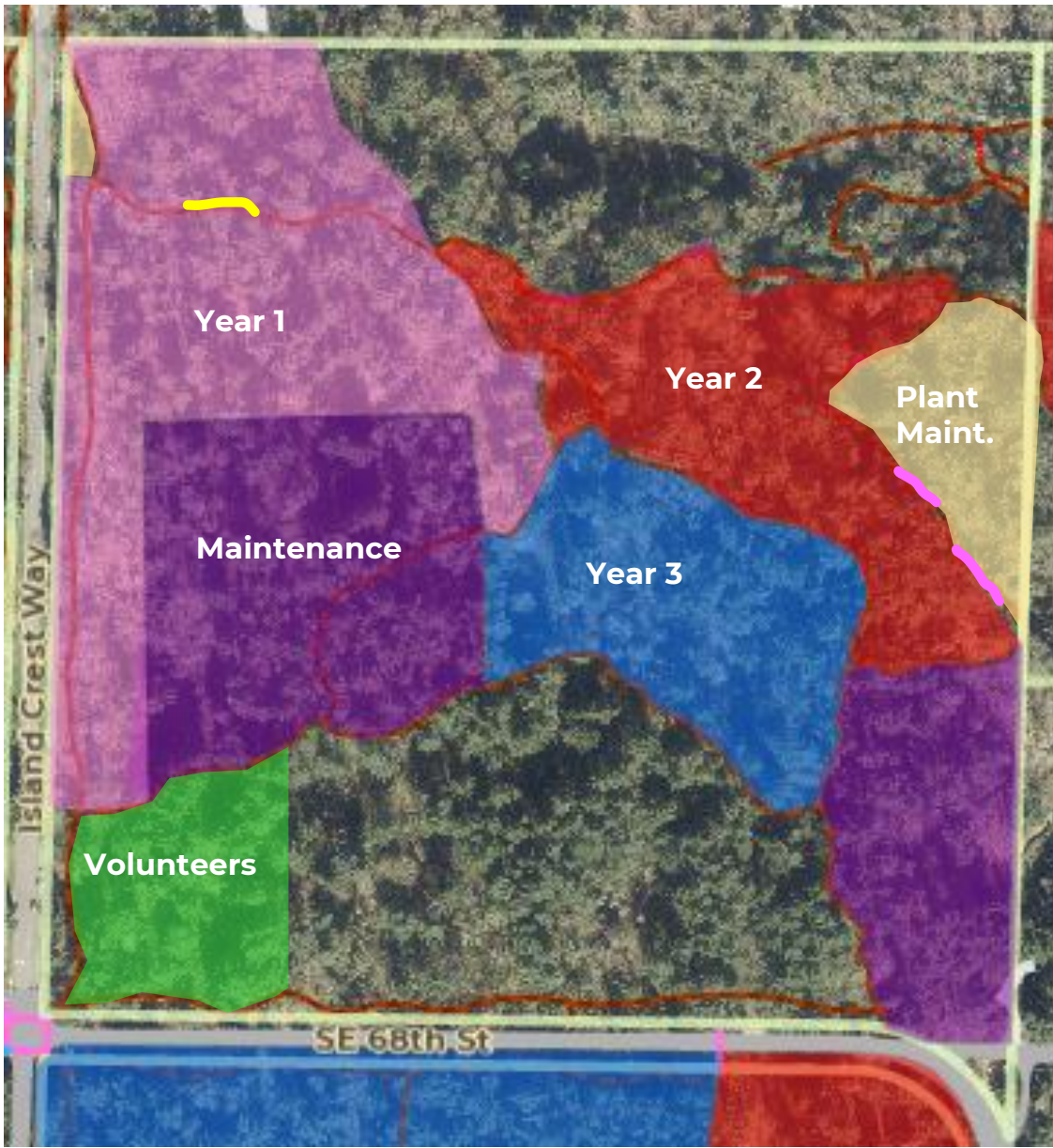
## VOLUNTEERS

- Blackberry removal (blue).





# Pioneer Park NE- 2024



## CONTRACTOR WORK

- Year 1 weed removal on 7.4 acres (pink).
- Year 2 weed removal on 4 acres (red).
- Year 3 weed removal on 3.4 acres (blue).
- Invasive removal maintenance on 7.2 acres (purple).
- Maintenance on 275 plants (yellow).

## NATURAL RESOURCES CREW

- Noxious weed monitoring throughout park.
- Mulching over grass along ICW.
- Planting maintenance and watering on perimeter.
- Graveling muddy sections of trail, brushing, blowing leaves.

## VOLUNTEER STEWARDSHIP

- Ivy removal and planting (green)



# Pioneer Park SE- 2024

## CONTRACTOR WORK

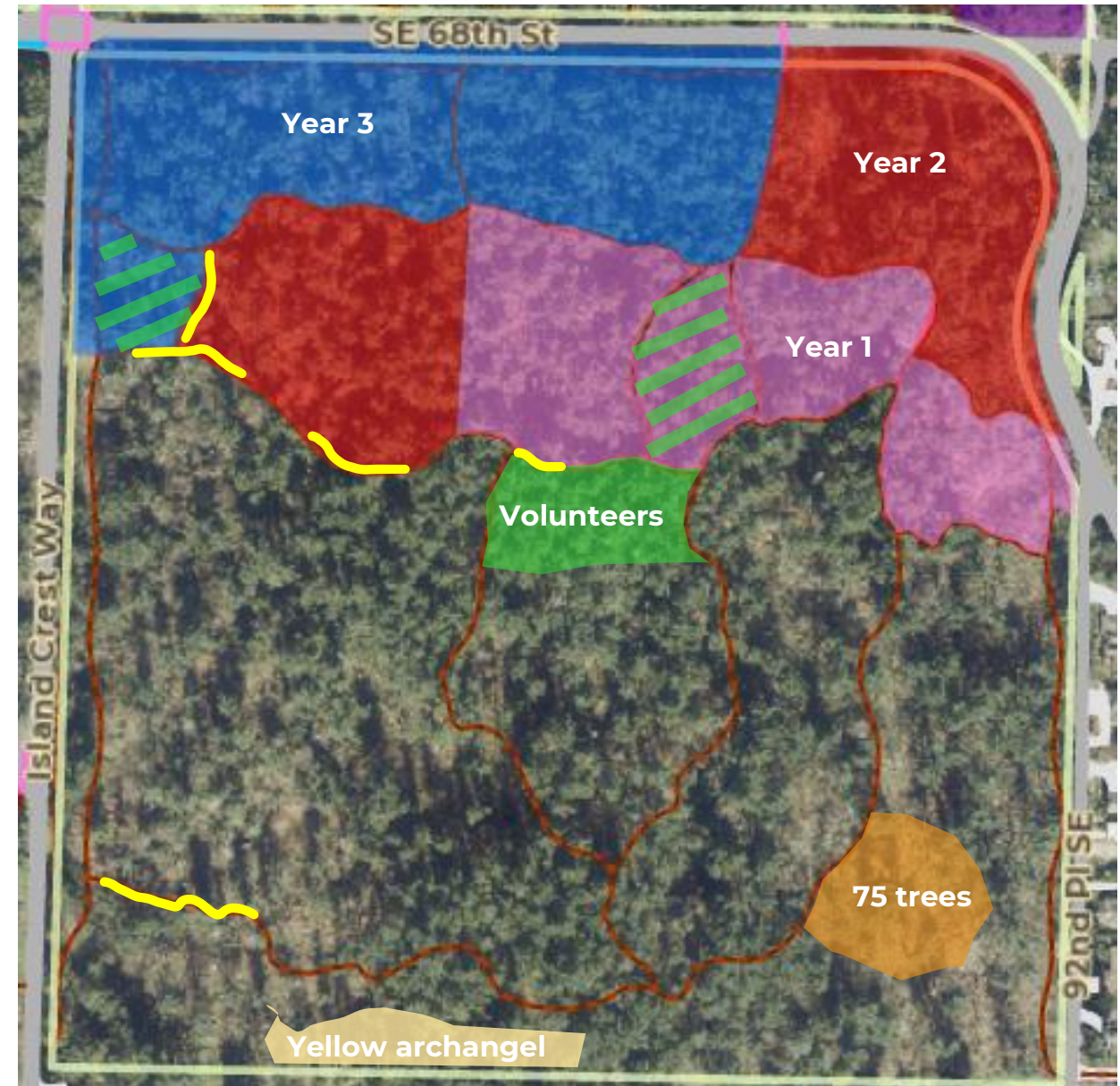
- Year 1 weed removal on 4.4 acres (pink).
- Year 2 weed removal on 4.6 acres (red).
- Year 3 weed removal on 5.4 acres (blue).

## NATURAL RESOURCES CREW

- Noxious weed monitoring throughout park.
- Archangel treatment.
- Graveling muddy sections of trail, brushing, blowing leaves.
- Mulching and planting grass borders along ICW.
- Infill planted 75 trees (orange).

## VOLUNTEER STEWARDSHIP

- Already completed Year 3 invasive removal + Year 1 invasive removal (green stripes)
- Continued Year 1 weed removal (green)





# Engstrom Open Space- 2024



## CONTRACTOR WORK

- Year 2 weed removal on 1.8 acres.

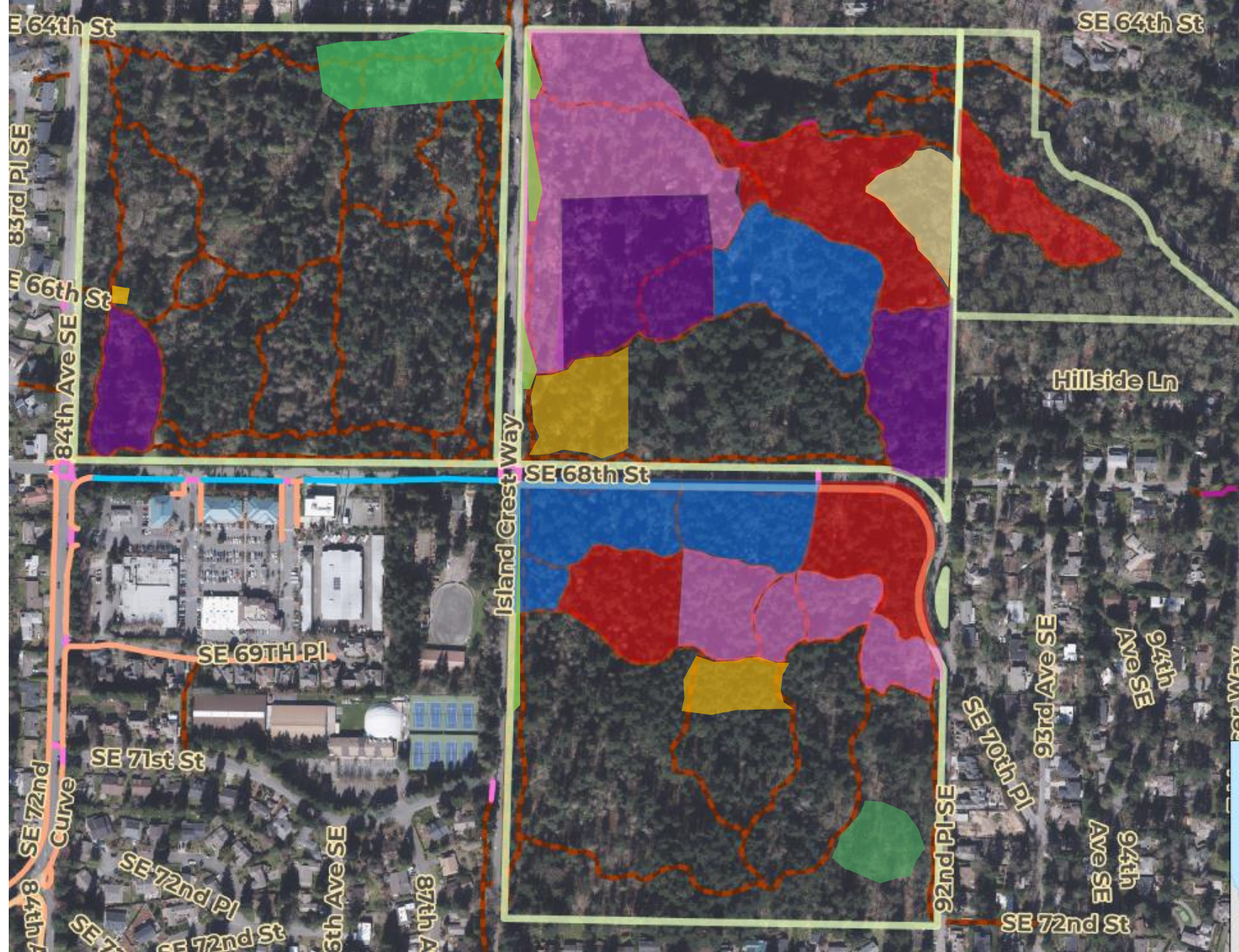
## NATURAL RESOURCES CREW

- Noxious weed monitoring along stream.
- Trail gravelling
- Culvert maintenance, brushing, blowing, clearing.







# Restoration 2024 Work Plan Summary

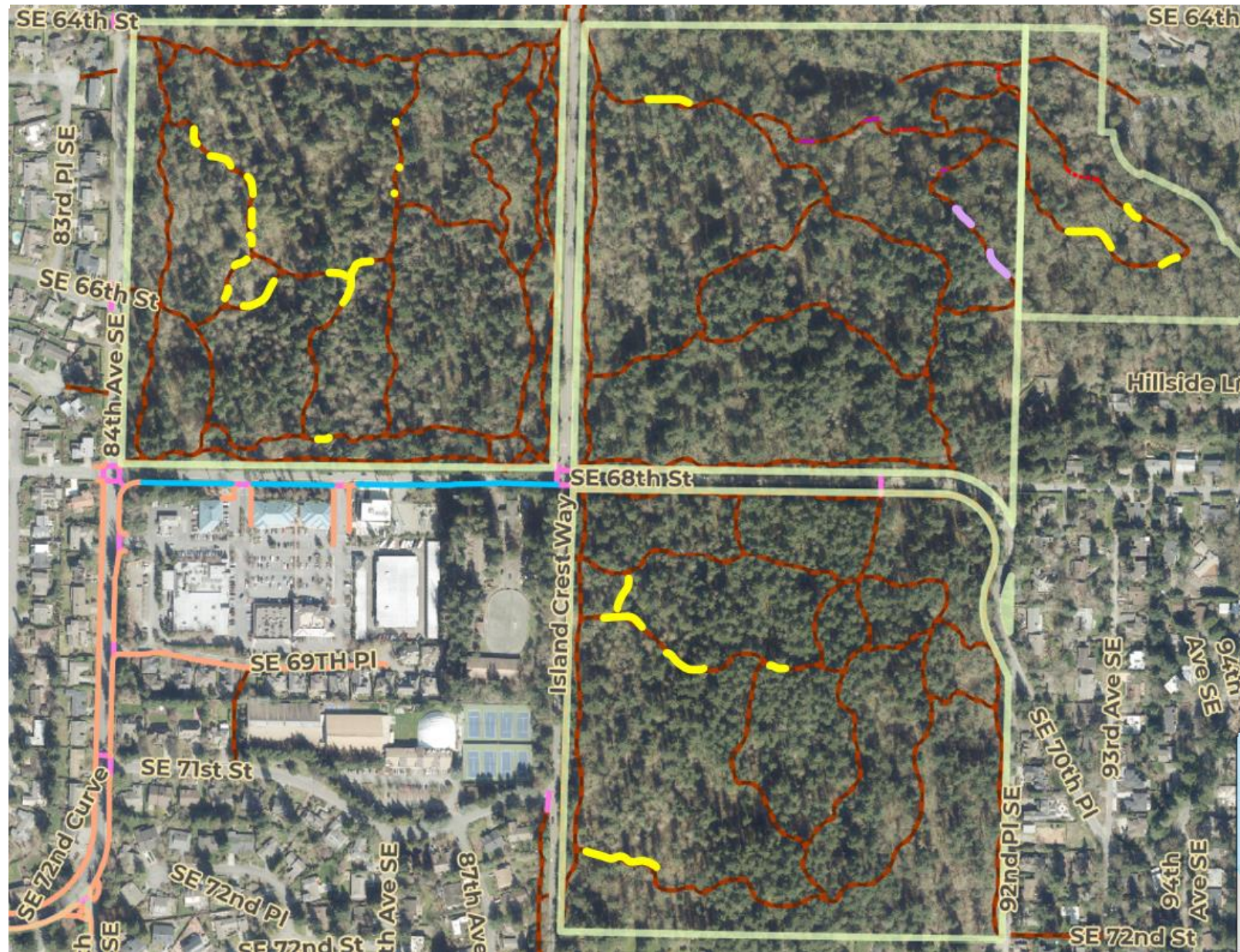
-  Year 1 Comprehensive Weed Removal
-  Year 2 Comprehensive Weed Removal
-  Year 3 Comprehensive Weed Removal
-  Invasive removal maintenance
-  Planting
-  Planting Maintenance
-  Volunteer Projects





# Trails 2024 Work Plan Summary

-  Re-gravelling/ water management
-  Retaining wall repairs
-  Brushing: All trails
-  Leaf blowing: All trails





# Additional Discussion



## Converting grassy perimeters to native plants

- Grassy perimeter of Pioneer Park along Island Crest Way and SE 68<sup>th</sup>.
  - Benefit pollinators
  - Decrease long-term maintenance
  - Extend forest buffer
- Working in phases to
  - Mulch over grass
  - Establish native wildflowers instead of grass
  - Plant native shrubs and trees to extend forest buffer