

EXHIBIT 2

There are ten existing ATC sites (“nodes”) shown with yellow highlight. The one red dot is the existing ATC/T-Mobile facility within the second floor of our Medina Public Works building.

Photos of each node are shown in order and follow this page.

Node #	LAT/LONG
Node 1	47.6364/ -122.2386
Node 2	47.6320556/ -122.238722
Node 3	47.6274444/ -122.238556
Node 4	47.6218056/ -122.238694
Node 5	47.6160833/ -122.238944
Node 6	47.6175556/ -122.234278
Node 7	47.6099722/ -122.224111
Node 8	4.6188889/ -122.221778
Node 9	47.6192778/ -122.225111
Node 10	47.61656/ -122.22017

Chart 1: Location of each of the 10 nodes to be modified (Source: Plans)

An overview of the Node locations is depicted in Figure 1.

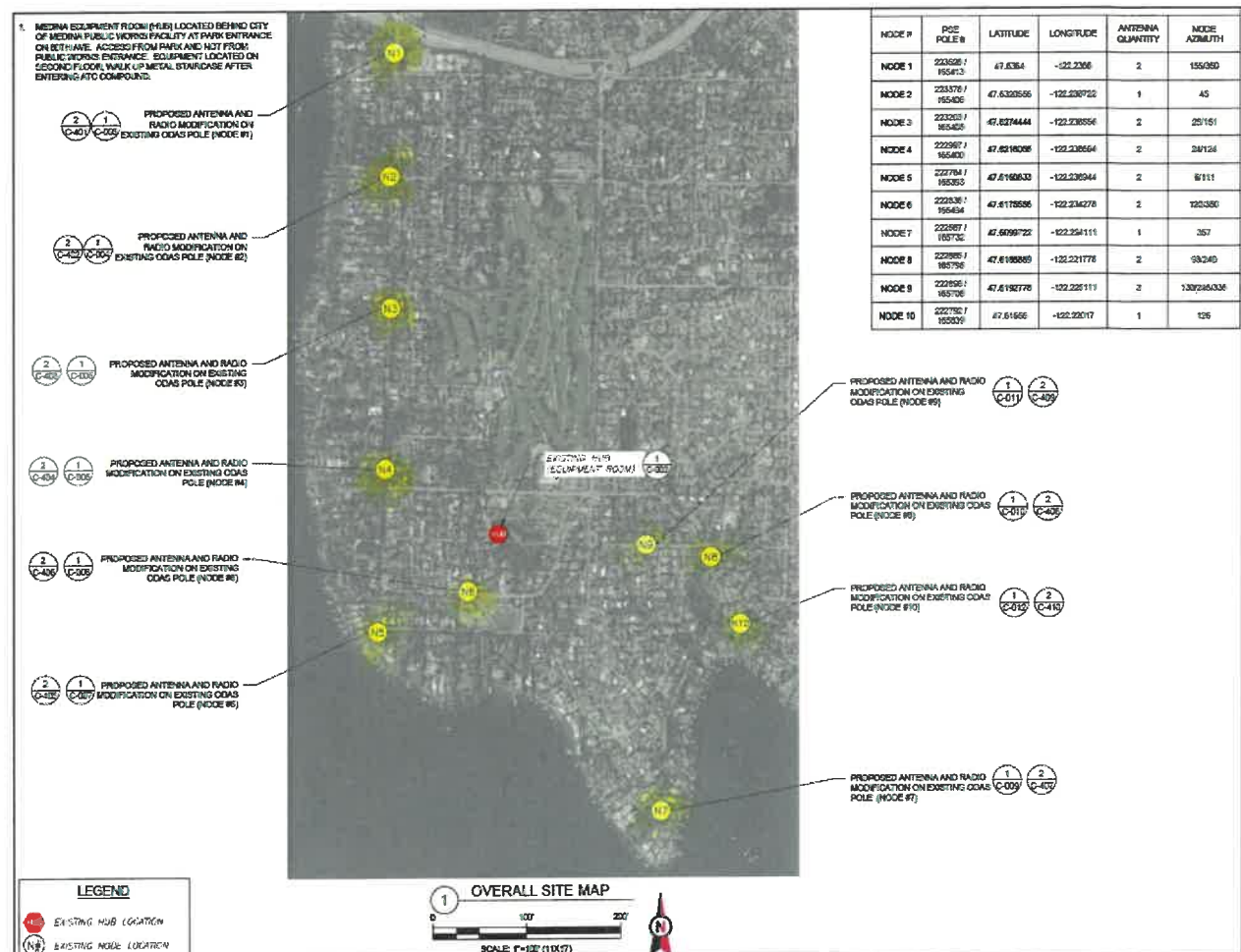


Figure 1: Overview site map (Source: Plans, Title Page C-003).



Figure 3-1: View of existing Node 1 (Source: Google Streetview).



Figure 3-2: View of existing Node 2 (Source: Google Streetview).





Figure 3-3: View of existing Node 3 (Source: Google Streetview).



Figure 3-4: View of existing Node 4 (Source: Google Streetview).



Figure 3-5: View of existing Node 5 (Source: Google Streetview).





Figure 3-6: View of existing Node 6 (Source: Google Streetview).



Figure 3-7: View of existing Node 7 (Source: Google Streetview).





Figure 3-8: View of existing Node 8 (Source: Google Streetview).

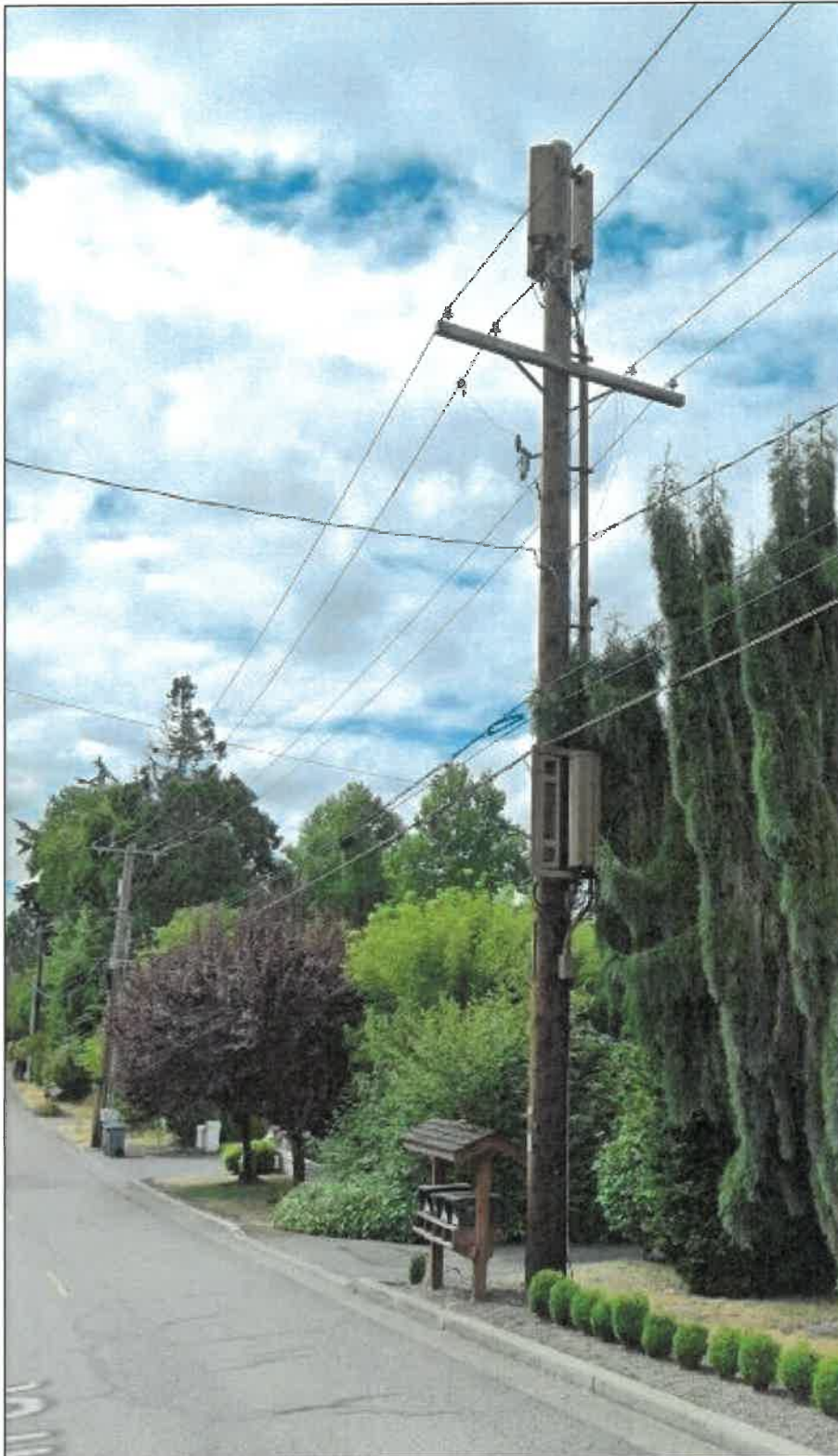


Figure 3-9: View of existing Node 9 (Source: Google Streetview).



Figure 3-10: View of existing Node 10 (Source: Google Streetview).

The antennas and associated equipment are mounted at varying heights for each Node. Figure 4 shows the Applicant's proposal with details in elevation view for each Node. The group of figures in Figure 4, below, show the proposed elevations of the Nodes on the PSE wood utility poles in the PROW. For ease of identification, the group of figures in Figure 4 have the node numbers appended. For example, Figure 4-1 is specific to Node 1, where Figure 4-6 is specific to Node 6, etc.