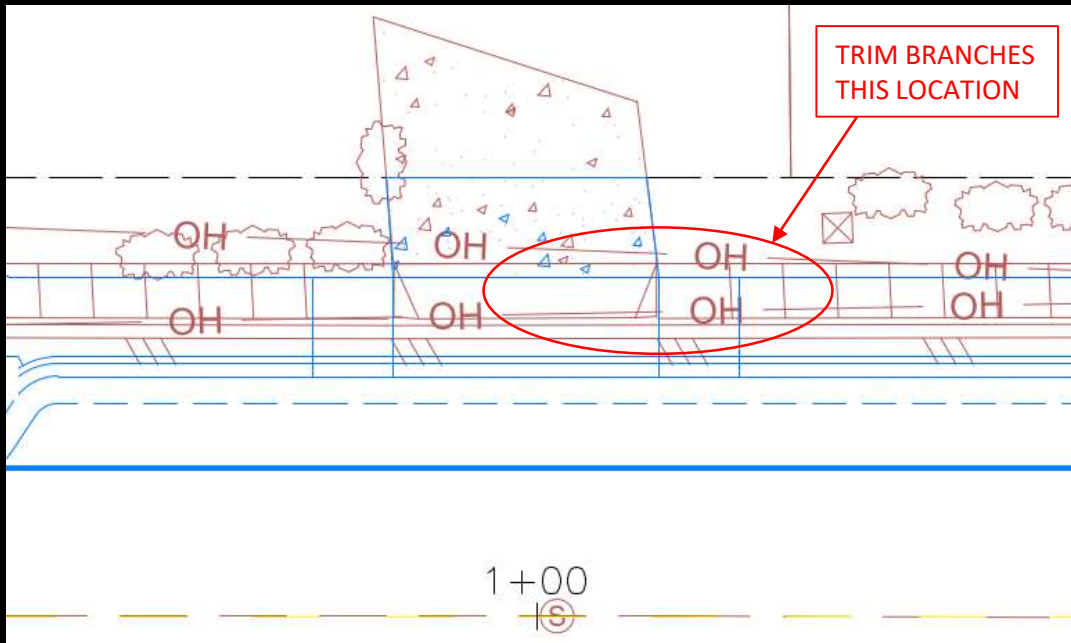


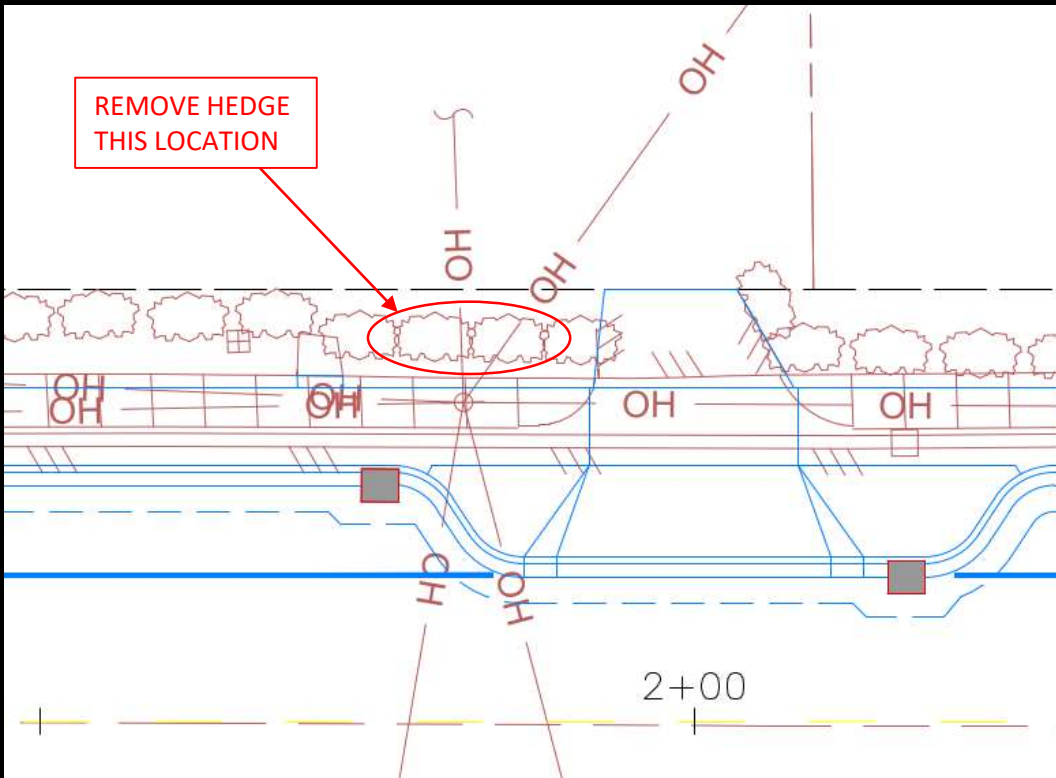
1200 Evergreen Pt Rd

Significantly trim Cherry
Tree



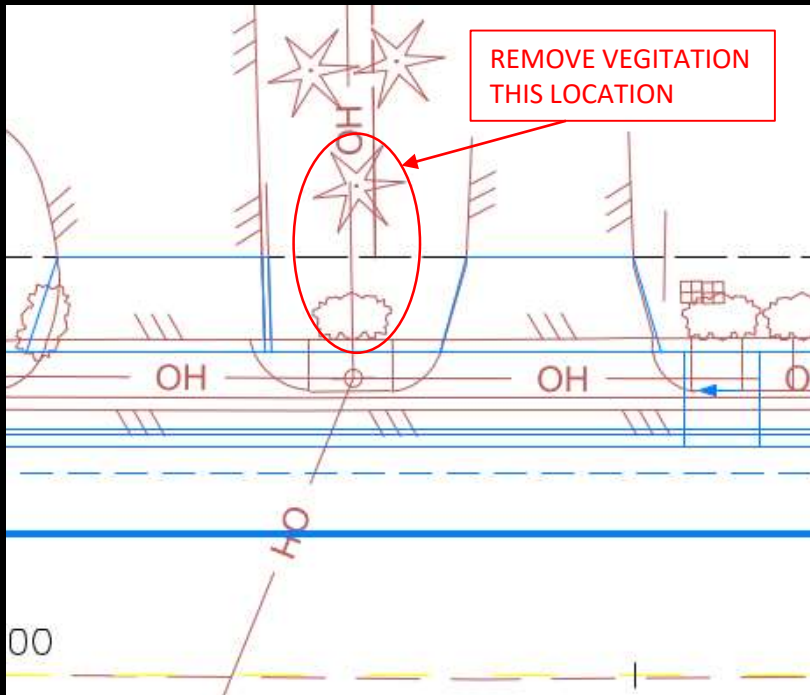
7608 NE 12th ST

Remove hedge



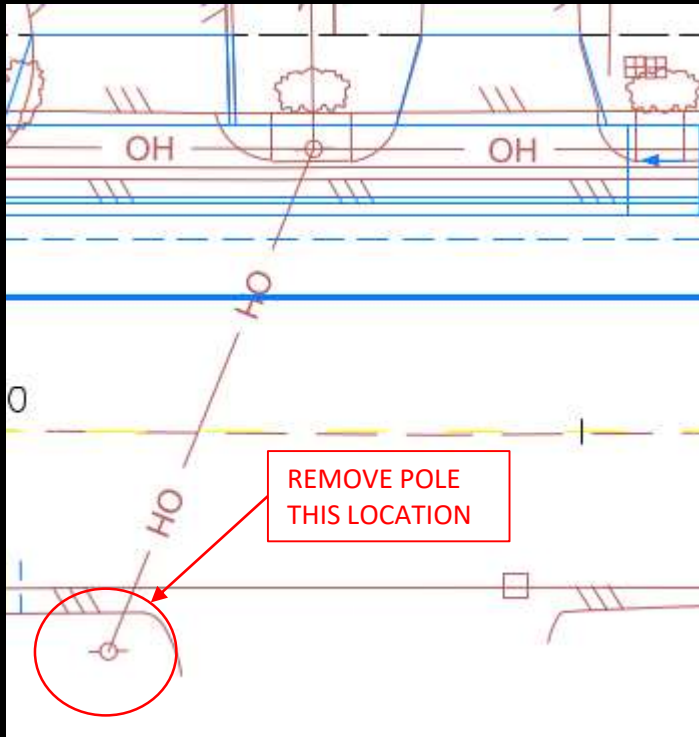
7620/7634 NE 12th ST

Remove blue spruce and
ground cover vegetation



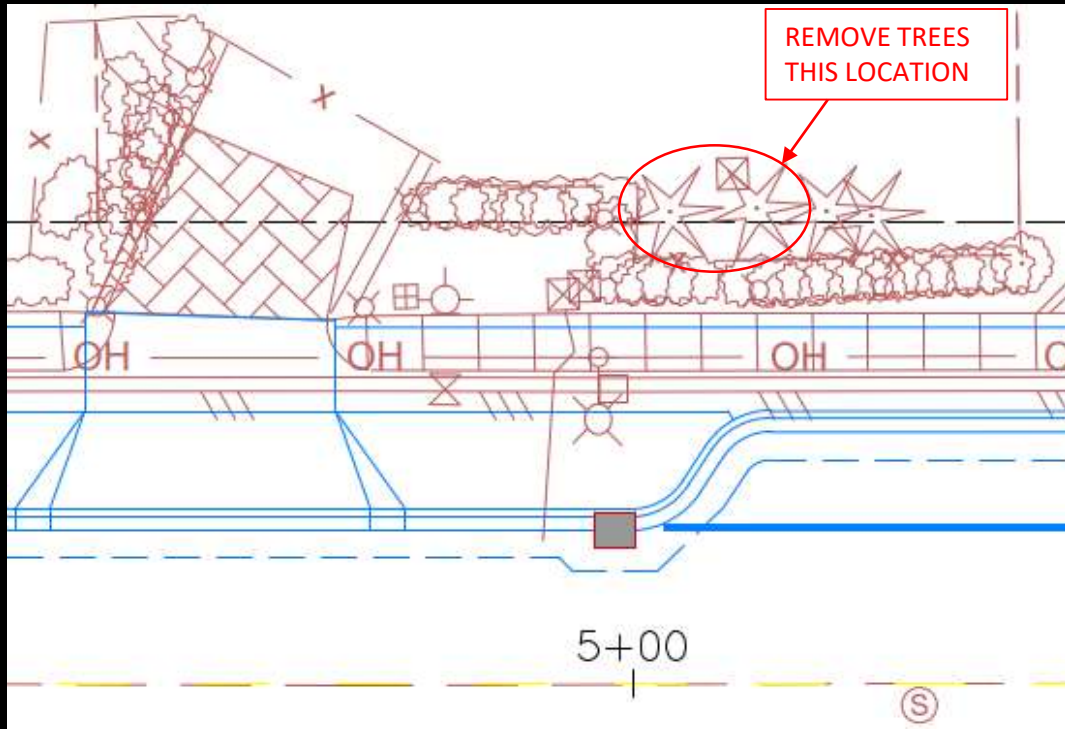
7615 NE 12th ST

Across the street from
7620/7634, delete tensioner
pole



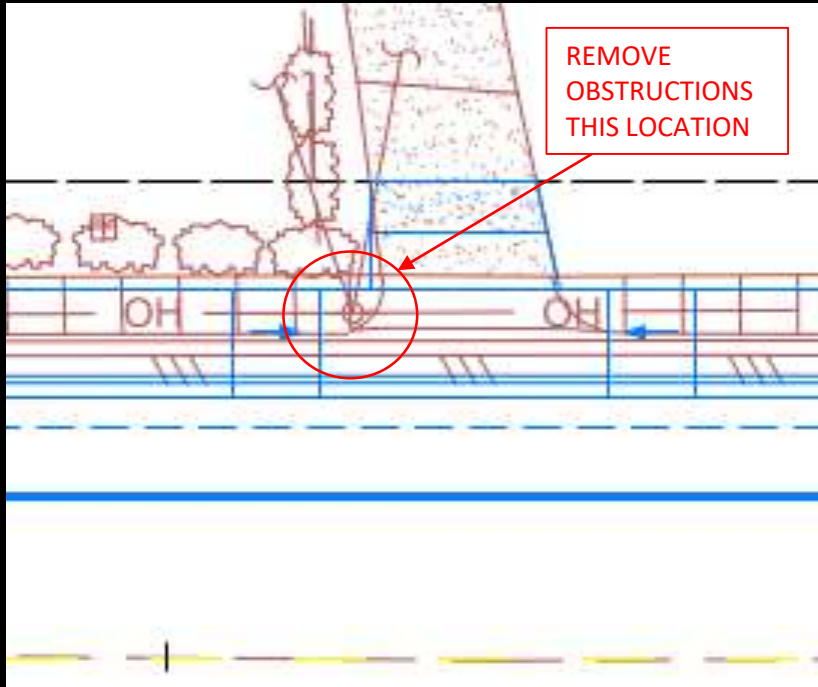
7648 NE 12th ST

- Remove one douglas fir and trim adjacent douglas Fir. Existing fence is in the ROW. Notice of violation has been sent.



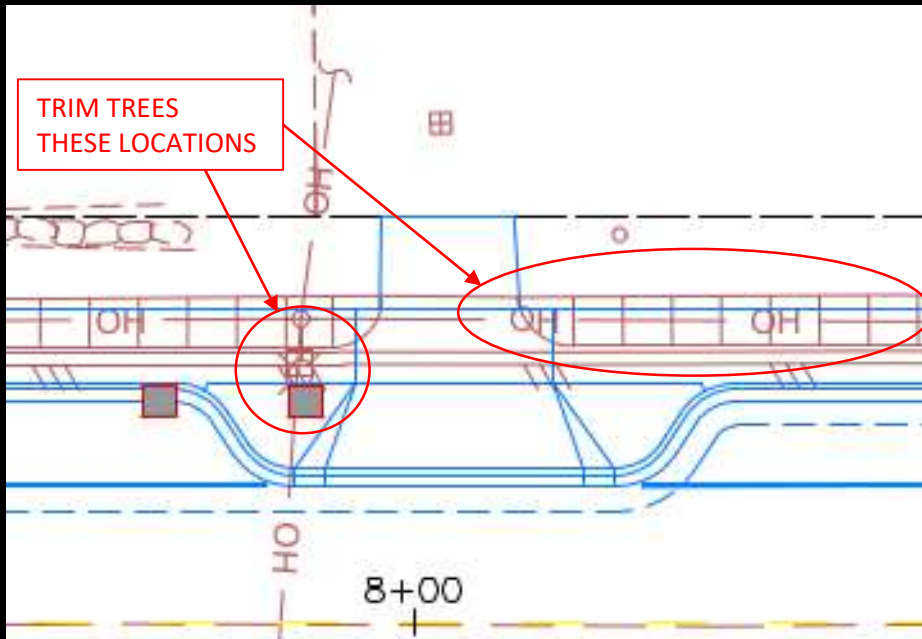
7658/7804 NE 12th ST

- Remove portion of hedge and section of white fence in the ROW



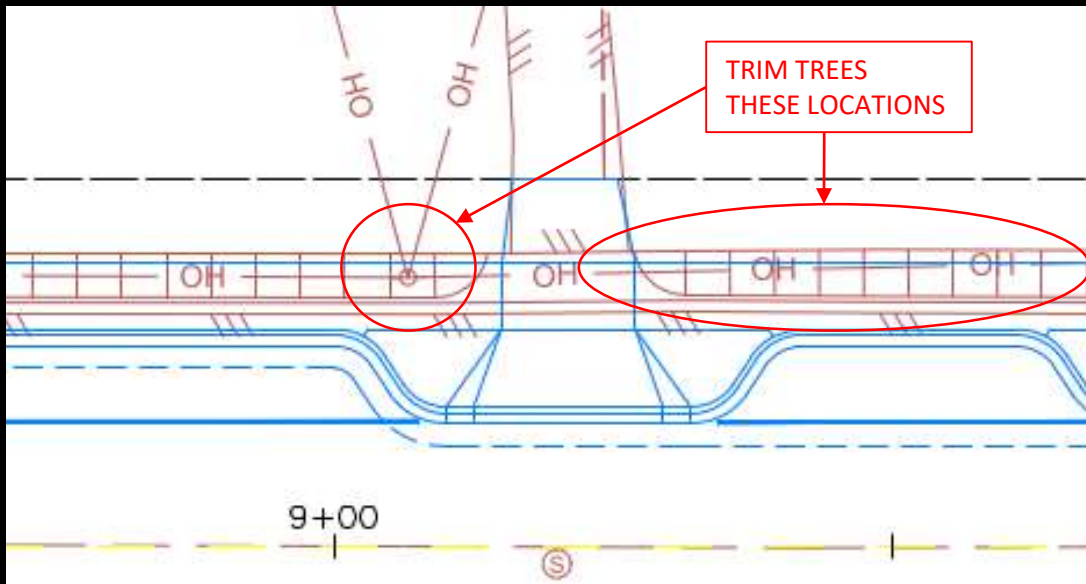
7808/7816 NE 12th ST

- Trim tree behind pole and along frontage
- 7816 is being redeveloped, possibly removing frontage trees.



7826/7830 NE 12th ST

- Trim maple behind pole and trim along frontage





PROJECT SUMMARY:

- Remove 6 trees
- Removal recommendation of 6 trees (nuisance or declining)
- Trim 15 trees
- 12 properties will be impacted (north side only)

BENEFITS:



Increased Safety



ADA Compliance



Traffic Calming



Aesthetics