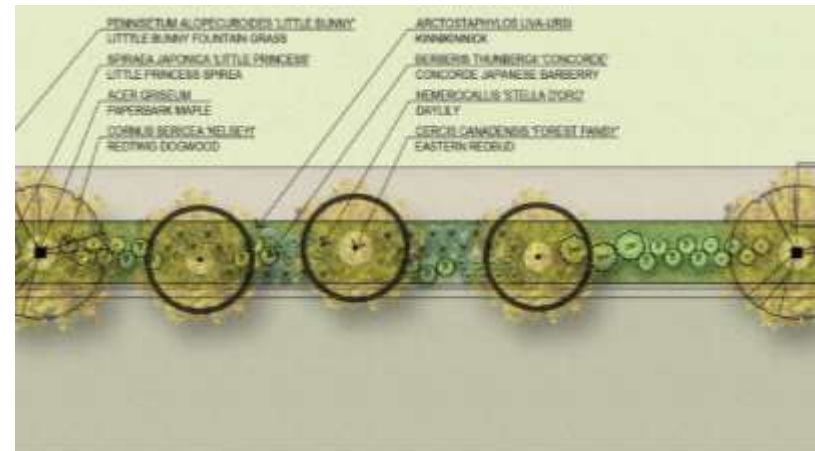


NE 12TH STREET LANDSCAPE PLAN

PRELIMINARY DESIGN

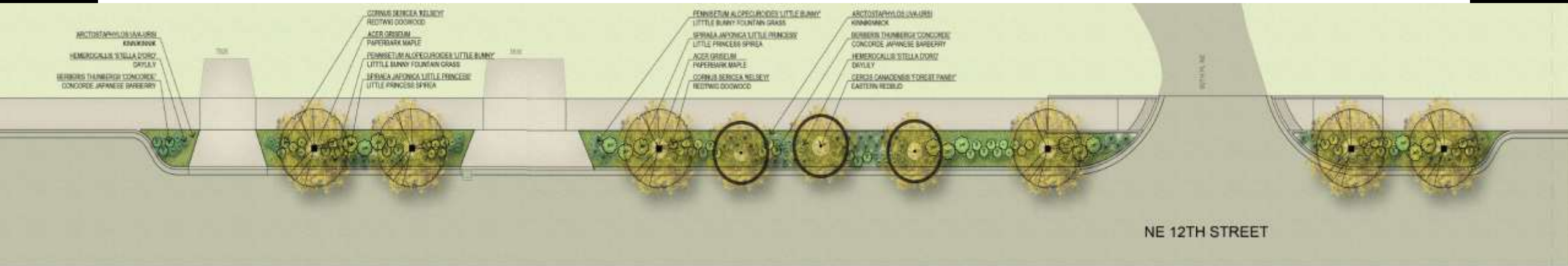


BACKGROUND

- Sidewalk project
 - Relocate poles
 - ADA Compliance
 - Traffic calming
 - Project excluded Landscape Plantings
-



PRELIMINARY PLAN



The plant palette was chosen and curated to provide a seasonal variety of colors and textures while maintaining a relatively low requirement for maintenance and not obstructing sight lines. It incorporates native and adaptive non-native plant species with characteristics of the pacific northwest. *Cercis canadensis* 'Forest Pansy,' and *Acer griseum* trees provide seasonal interest while also being moderate in height and on Medina's approved street tree list.

MODEL RENDERING -

1



MODEL RENDERING - 2



MODEL RENDERING -
3



PROPOSED TREES AND PLANTS



ACER GRISEUM



CERCIS 'FOREST PANSY'



CORNUS SERICEA 'KELSEY'



PENNISETUM 'LITTLE BUNNY'



SPIRAEA JAPONICA 'LITTLE PRINCESS'



BERBERIS THUNBERGII 'CONCORDE'



ARCTOSTAPHYLOS UVA-URSI



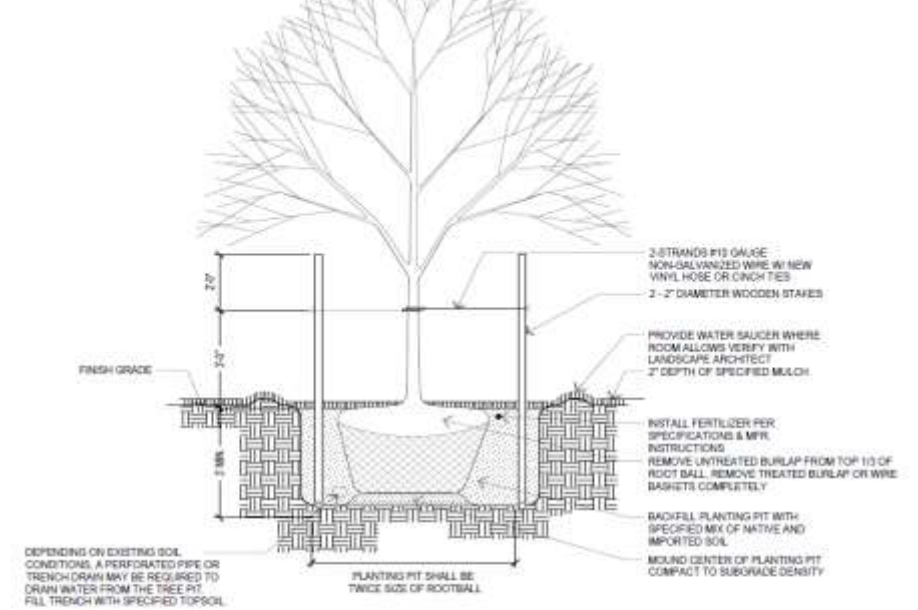
LAVANDULA 'HIDCOTE SUPERIOR'



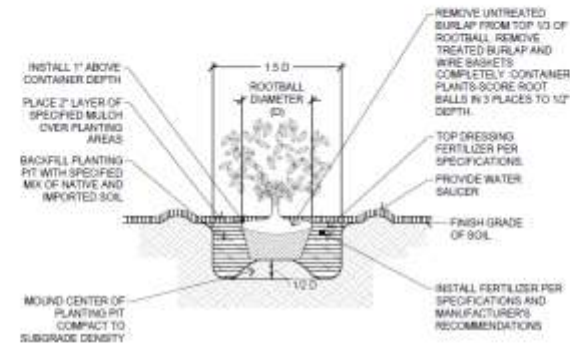
HEMEROCALLIS 'STELLA D'ORO'

ROUGH COST ESTIMATE

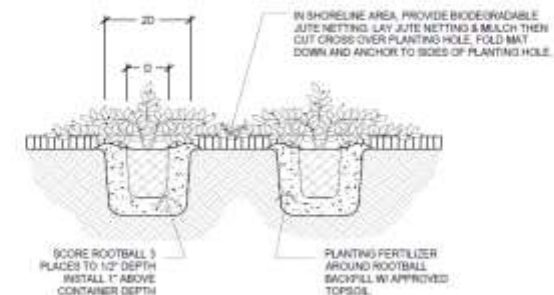
- Landscape Plantings \$60,000.00
- Irrigation w/ New Meter Svc \$95,000.00
- Annual Maintenance (contracted) \$20,000.00
- Annual Watering \$4,000.00



1 DECIDUOUS TREE PLANTING
3'-1'-0"



2 SHRUB PLANTING
3'-1'-0"



3 GROUNDCOVER PLANTING
1'-3'-0"