



MEDINA, WASHINGTON

AGENDA BILL

June 14, 2021

Subject: 2021 Medina Park Playground Improvements

Category: City Council Business

Staff Contact: Ryan Osada, Public Works Director

Summary

In 2016, Medina Park Playground was expanded to add the Explorer Dome and Seesaw structures. At that time, the city also included an ADA Accessibility Ramp on the east entrance to meet current federal requirements. In 2021, the city plans to replace the older outdated structures and incorporate an Accessible Design that offers a range of play experiences for children of varying abilities. This project will make needed playground improvements that includes new play equipment, new wood chip surfacing and relocating the sandpit. The improvements benefit the community as a whole and encourage free play for the children.

Attachment:

- PowerPoint Presentation

Budget/Fiscal Impact: \$200,000.00 (\$50,000.00 from KC Park Levy)

Staff Recommendation: Approve final Playground Design

City Manager Approval:

Proposed Council Motion: Move to approve final playground design and direct City Staff to purchase and install equipment.

Time Estimate: 15 minutes.

A photograph of a playground with children playing. In the foreground, a boy in a blue shirt and a girl in a black jacket are on a swing set. To the right, a girl is on a play structure that includes a wheelchair. The background shows a grassy area and a building under a clear sky.

2021 MEDINA PARK
PLAYGROUND IMPROVEMENTS

JUNE 14, 2021

PLAYGROUND
IMPROVEMENT
GOAL

Accessible Design that offers
a range of play experiences for
children of varying abilities



EXISTING PLAYGROUND EQUIPMENT

- OUTDATED & WORN EQUIPMENT
- MAINTENANCE ISSUES
- NON-COMPLIANT
- LIMITED REPLACEMENT PARTS
- PLAYSAND MIXING

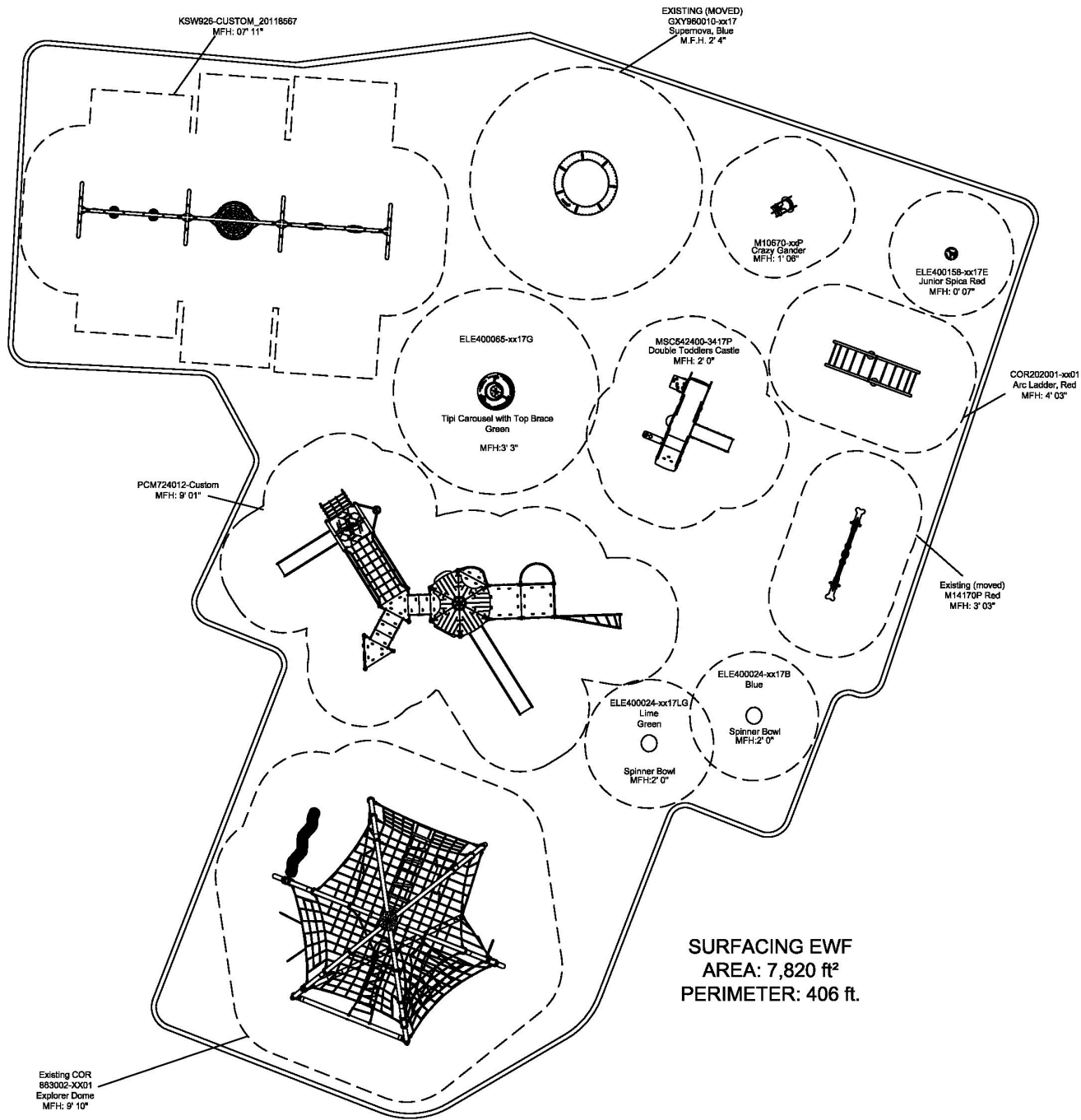












PROPOSED NEW PLAYGROUND DESIGN

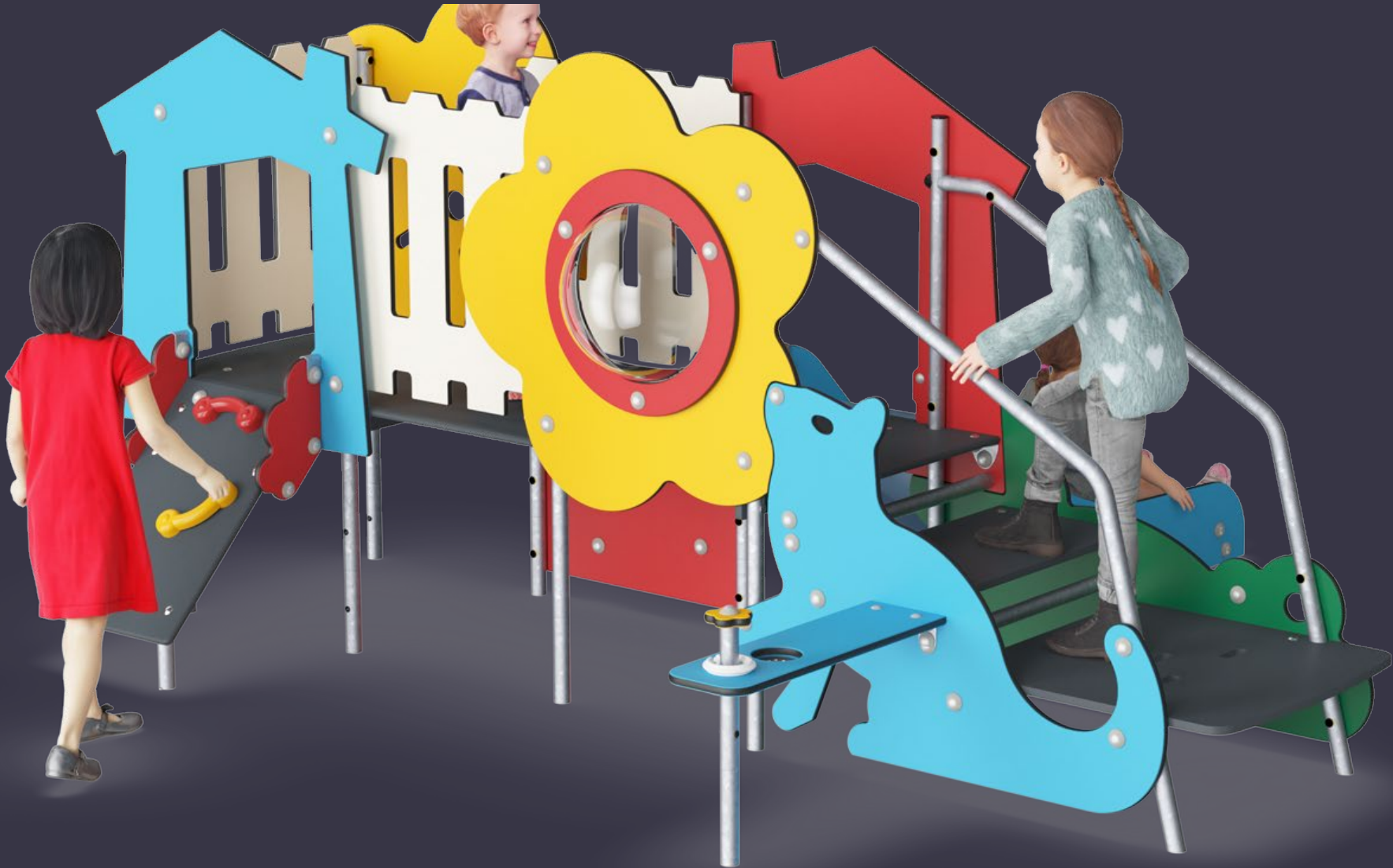






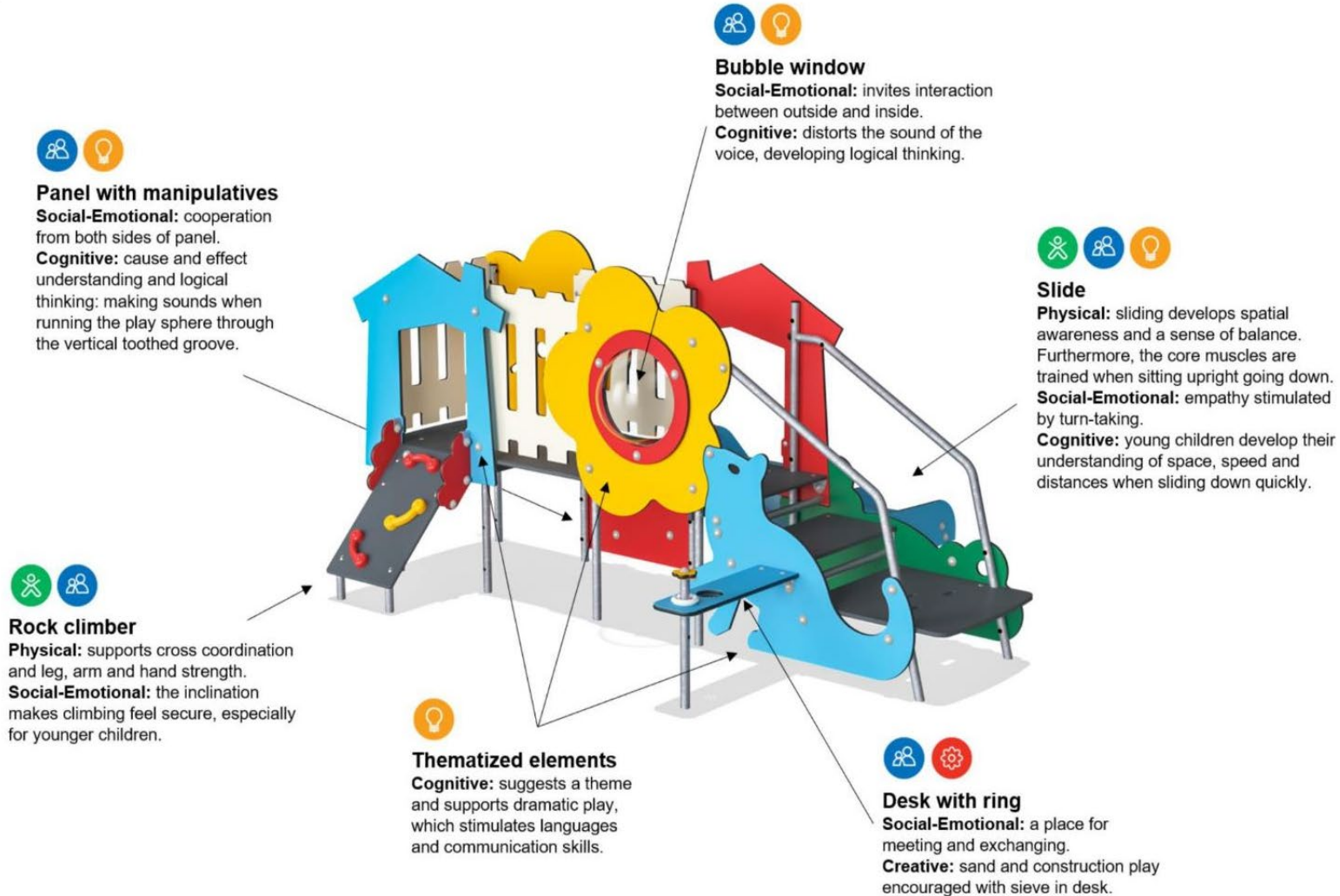






Double Toddlers Castle

MSC5424







Arch Ladder, 4 ft

COR20200



Frame

Physical: develop children's upper body muscles and arm strength when hanging in arms. This is especially important due to sedentary lifestyles and back-pain in children.

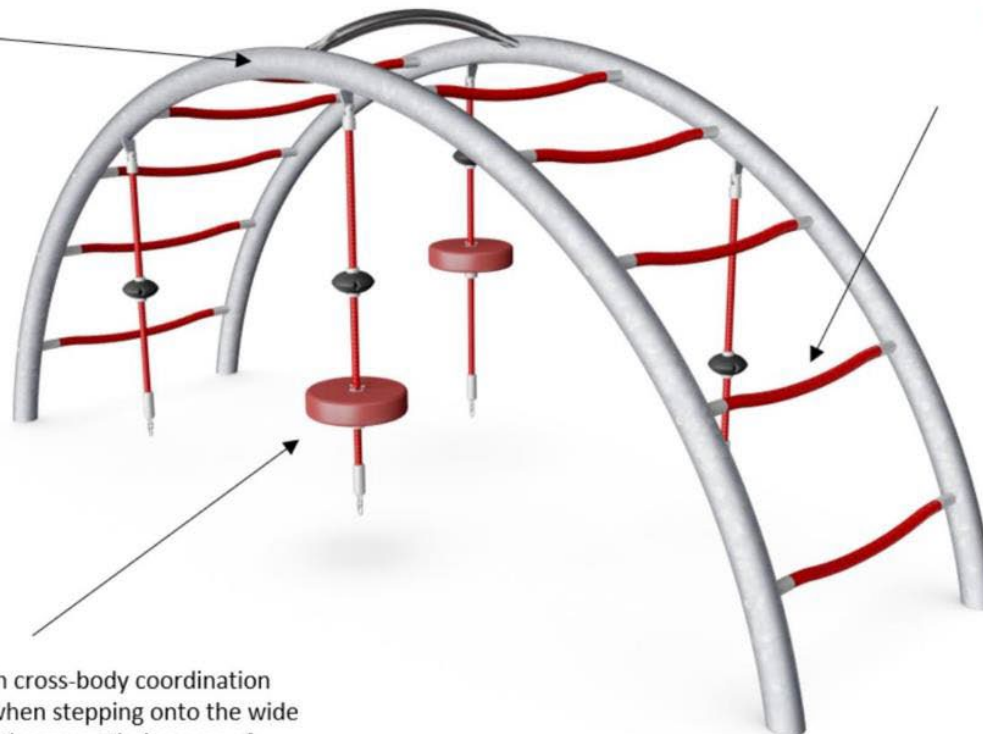
Social-Emotional: develop children's courage and self-regulation when seated on the top of the frame.



Rope with disc

Physical: children train cross-body coordination and muscle strength when stepping onto the wide disc and clinging onto the rope. Their sense of balance is trained when gently swaying when seated. The sense of balance is important for instance for being able to sit still.

Social-Emotional: socializing and turn-taking when deciding who should sit here.



Rope ladder

Physical: the big steps allow for climbing and crawling through, training proprioception and spatial awareness. Climbing here takes big steps, training cross-coordination and muscle strength, pushing and pulling arms to get upwards.

Social-Emotional: the big meshes allow more children being seated together, sharing.







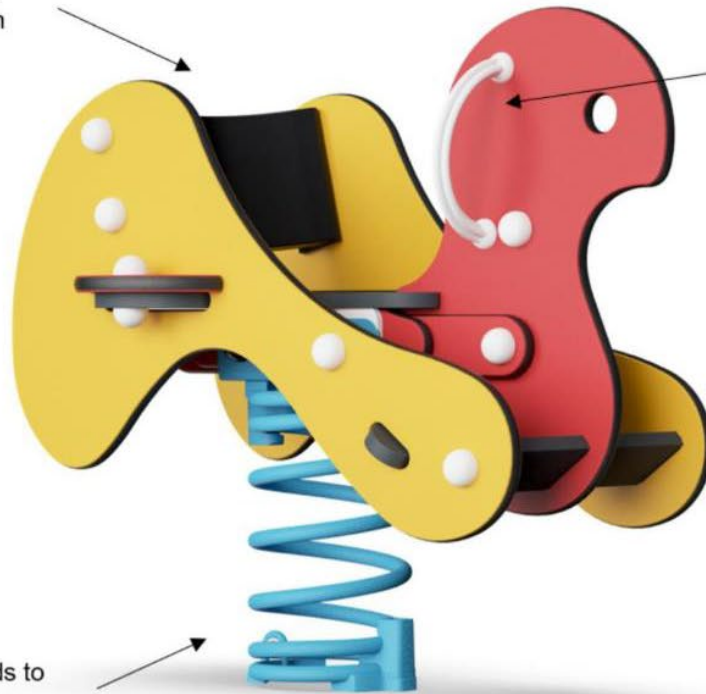
Back and foot support

Physical: extra back and foot support for children with walking disabilities. Rocking promotes sense of balance and space, both important in navigating the body in space. Arms and leg muscles strengthened when holding tight and pushing with legs. Bone density built when jumping off.



Rocking springer

Physical: response to movements adds to spatial awareness and sense of balance. These are fundamental motor skills that help the child's ability to sit still on a chair which takes a good sense of balance.
Cognitive: trains the understanding of cause and effect: when I move my body, the spring responds with movement.



Handhold

Physical: the possibility to hold onto more areas of the handhold ensures a good grip, necessary for rocking intensely. This trains the hand and arm muscles.



Gander

Cognitive: suggests a theme and supports dramatic play, which stimulates languages and communication skills.





Spinner Bowl

ELE400024



Tilted, spinning bowl

Physical: the sense of balance and the coordination are supported when spinning. This effects the ability to sit still for longer periods. Muscles are developed when pushing or pulling friends.

Social-Emotional: cooperation, helping others, turn-taking.

Cognitive: logical thinking when speeding up or slowing down the spin by either curling up or stretching.



Deep bowl

Social-Emotional: feeling of security when scooping in the bowl. Inclusive for all abilities.





Junior Spica

ELE400158



Round seat

Social-Emotional: turn-taking, cooperation, socializing.



Internal ball-bearing spinner

Cognitive: logical thinking, figuring out how to make the spinner work with gravity, not against it.



Pole

Physical: more gripping or leaning support points when standing, sitting, hanging holding tight and spinning.



Rotation

Physical: pushing or pulling it into motion, children use their muscle strength and strengthen their cardio. The rotation develops the sense of balance and space when enjoying the ride.

Social-Emotional: listening and negotiating how slow or fast to go, children develop their empathy and cooperation skills.



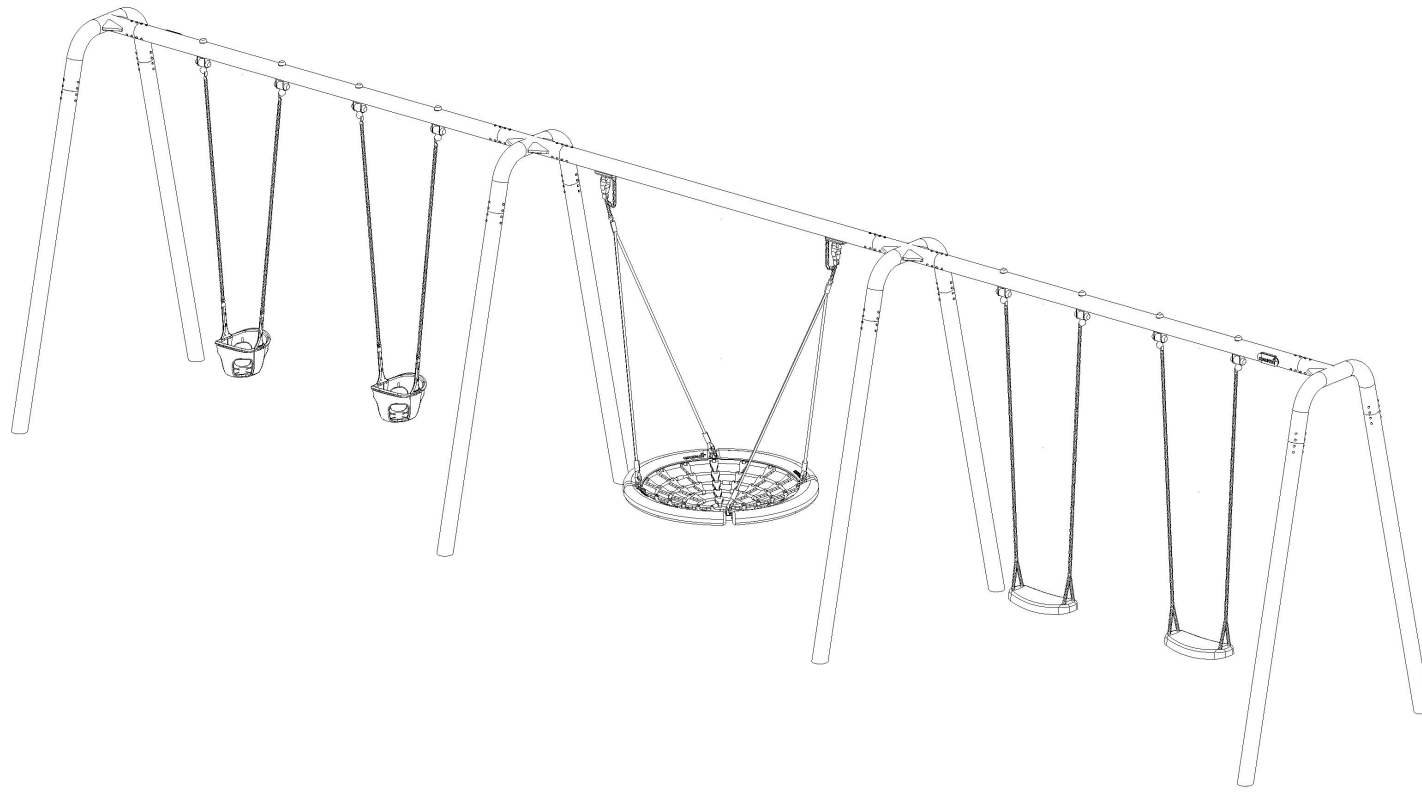






KSW926
ID 2011
JENMEI
2021-05-04

Colorline: Night Sky Blue Mat
Foundation: 90 cm
Norm: ASTM
Units: inch
Post Material: Night_Sky_Blue_M









ADOPTED PROJECT BUDGET

City Capital Funds (REET)	\$100,000
King County Parks Grant	<u>\$ 50,000</u>
Total Adopted Budget	\$150,000

PROPOSED REVISED BUDGET

38

City Capital Funds (REET)
\$150,000

King County Parks Grant
\$ 50,000

Total Adopted Budget
\$200,000

COST BREAKDOWN

39

Materials and Equipment
\$150,000



Site Preparation and Installation
\$ 50,000



Total Project Cost
\$200,000



QUESTIONS?