



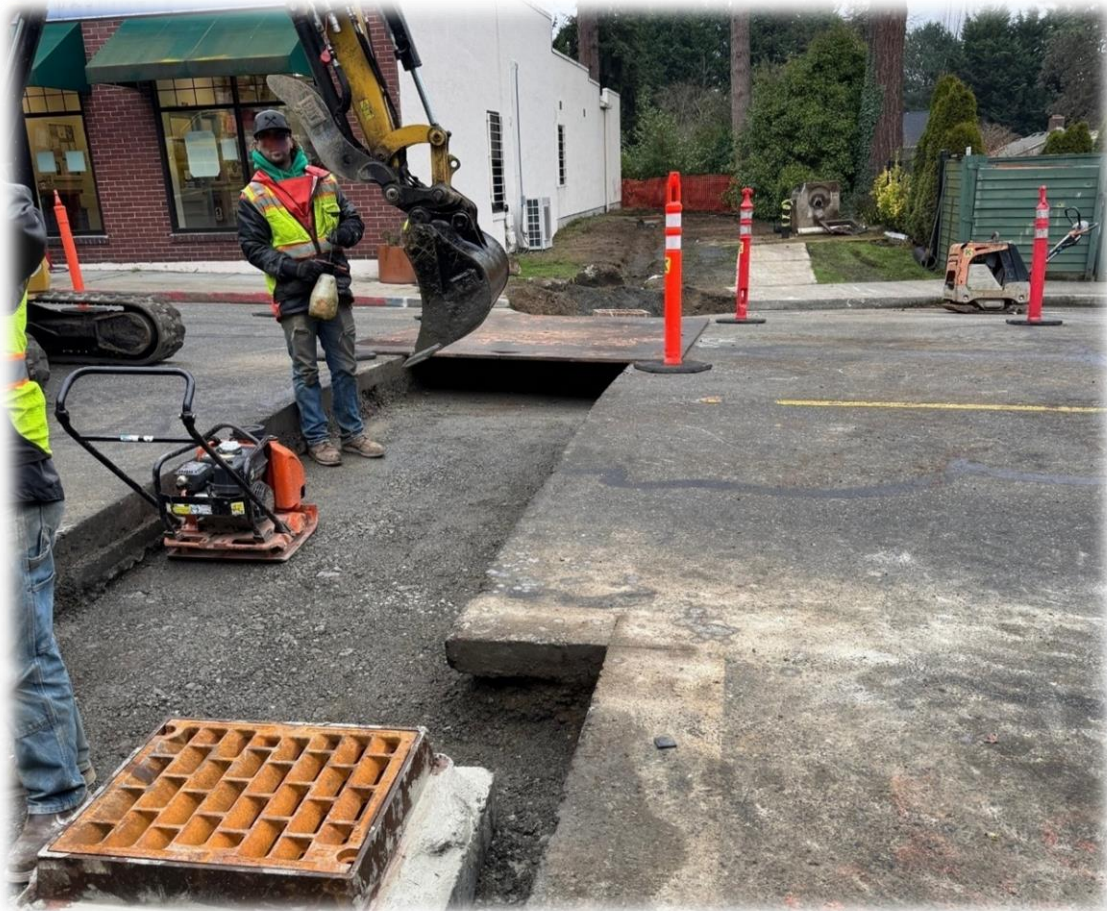
CITY OF MEDINA

501 EVERGREEN POINT ROAD | PO BOX 144 | MEDINA WA 98039-0144
TELEPHONE 425-233-6400 | www.medina-wa.gov

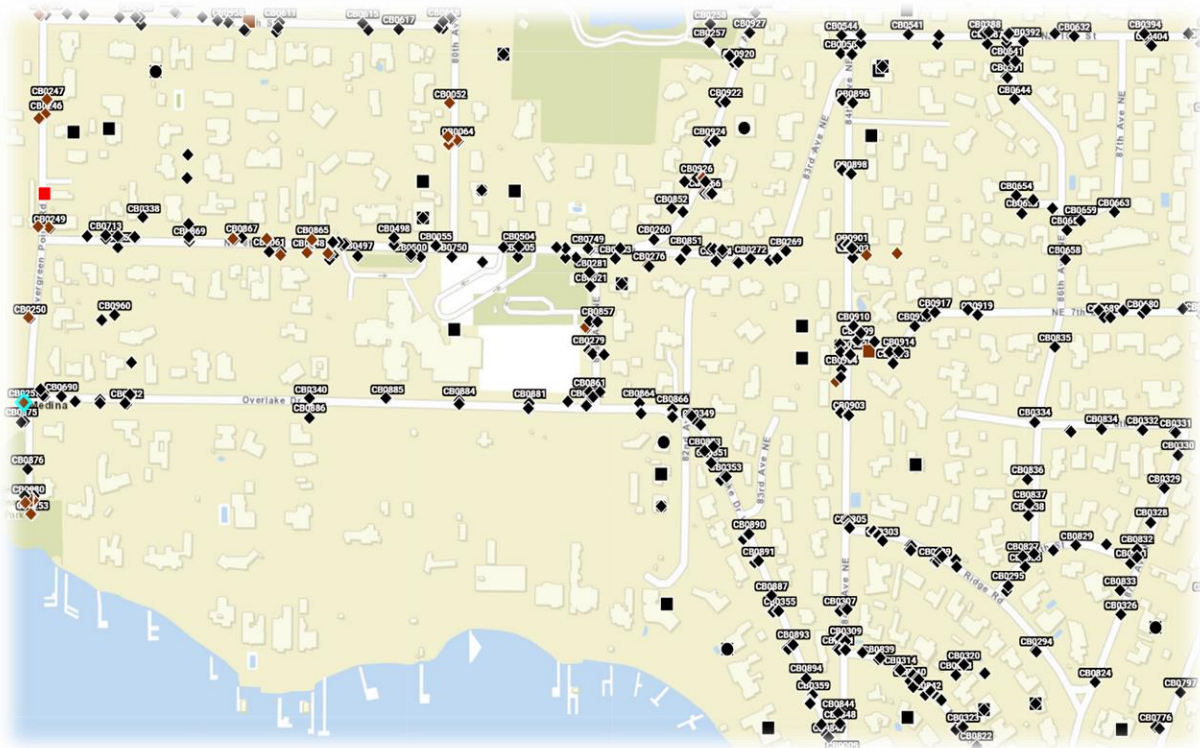
Date: January 12, 2026
To: Honorable Mayor and City Council
Via: Jeff Swanson, City Manager
From: Ryan Osada, Public Works Director
Subject: Public Works Monthly Report

2025 HIGHLIGHTS

- **STORM SYSTEM UPDATES** - Over the past several years, the city has prioritized improvements to the stormwater system. Public Works staff and consultants continue to identify drainage deficiencies and develop plans to reduce flooding during heavy rain events. 2025 has been a difficult year for flooding in the region. Managing our stormwater system is critical for long-term reliability and sustainability. With assistance from our consultant engineers, many problem areas related to inadequate drainage have been mitigated. Improvements range from minor catch basin connections to full pipe replacement projects which help increase capacity and direct flow into the proper channels.



- **PUBLIC AND PRIVATE STORM INSPECTIONS** - The 2025 Private Stormwater Inspection program was successfully completed and has been compliant for the past four years. These mandatory inspections apply to all private flow control and water quality facilities located on private property within the City. Some of the other components required by the permit include biennial inspections of all the public catch basins in the city, outfall monitoring, discharge violations and corrective actions taken (IDDE), evaluation of management practices with measurable goals and planned operational activities or projects for the next period. For the last seven years, Medina has fully met the Washington State Department of Ecology's NPDES requirements for the stormwater permit. An annual report is filed in April with a laundry list of requirements which changes every permit cycle.



- **ROW VEGETATION MANAGEMENT** – Public Works is actively trimming overgrown vegetation along the city's sidewalks. This has been an issue for many years making walkways nearly unusable for pedestrians. Last year staff were able to complete the main collector, 84th Ave NE and minor arterials. They have also focused on sightline issues at major intersections, mostly around the schools. In 2026 public works will broaden the scope to include all intersections and sidewalks along local access roads. Staff will continue to manage overgrown vegetation in the row, which helps with sightline issues, enhances overall safety, and creates an aesthetically pleasing environment for everyone in our community.

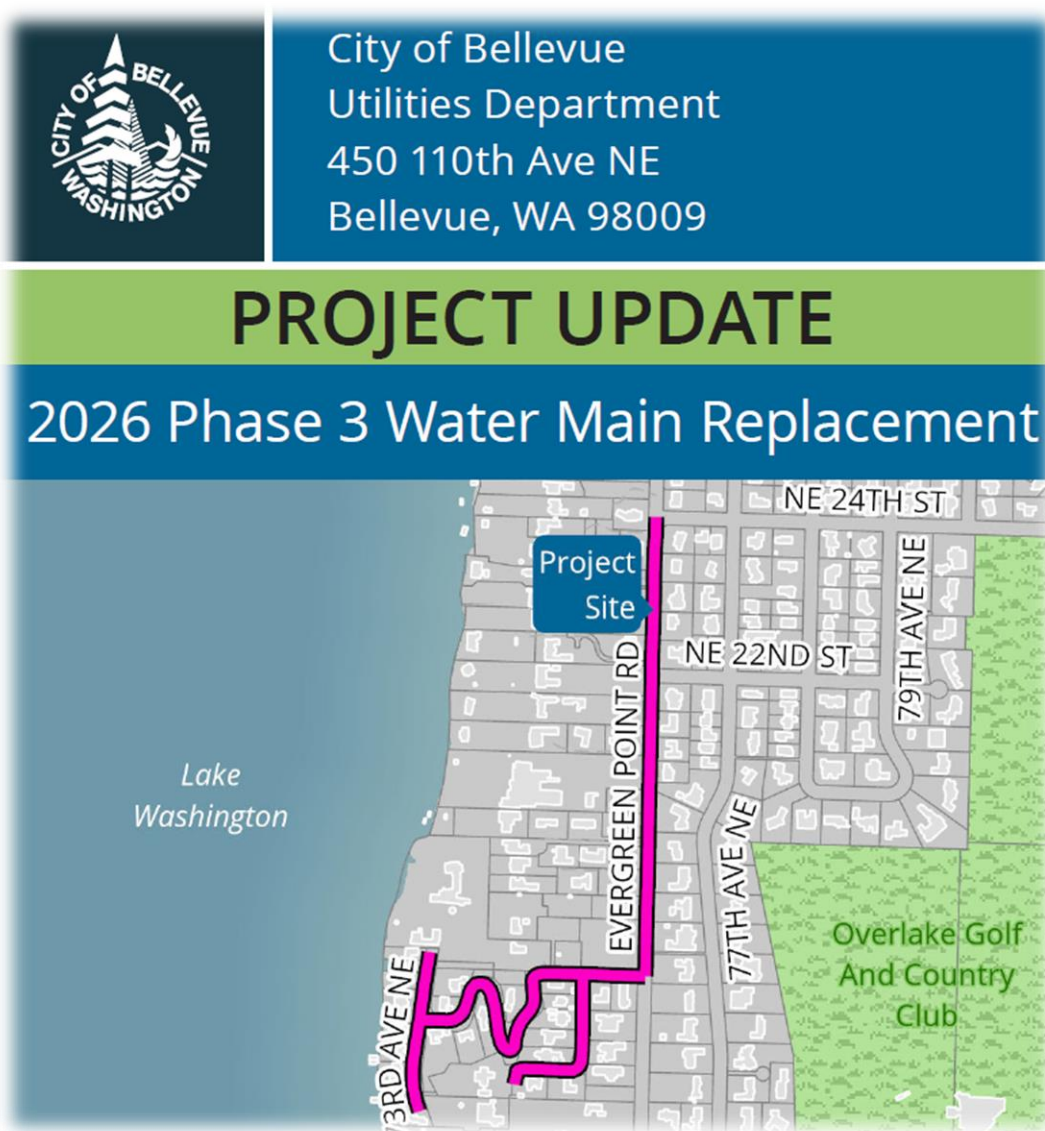


- **TENNIS COURT IMPROVEMENTS** – In 2025, the city completed major improvements to the tennis courts at both Medina Park and Fairweather Park. The project included deficiency repairs to of existing pavement, followed by full court resurfacing to restore playability, improve surface performance, and extend the life of the tennis courts. New black mini-link fencing was installed around the perimeter at both locations to enhance safety, durability, and court containment. In addition, the existing tennis nets and net posts were replaced with new equipment meeting current ASBA standards.



LOOKING AHEAD TO 2026

- **BELLEVUE WATER AC MAIN REPLACEMENT** – Bellevue Utilities has several scheduled AC Main projects in the city which will be ongoing for a number of years. Much of the existing water infrastructure is approaching or has reached the end of its useful life. These replacement projects are critical to maintain reliability and ensure adequate service levels for future demand. For 2026, Bellevue Utilities is planning to move forward with Phase 3 which includes NE 18th ST, Rambling Lane, 74th PL NE and 73rd Ave NE. This steep narrow stretch of roadway down to Lake Washington will pose ingress and egress challenges during construction. It is currently scheduled to begin in late summer of 2026 and expected to last approximately three months. Medina Public Works will continue to provide hands-on support for affected residents and communicate to the community as information is given.



- **OVERLAKE DRIVE BRIDGES** – In 2025, King County bridge inspectors identified deficiencies on one of the bridges along Overlake Drive East. An annual inspection was performed on both bridges, 1014C and 1014B, and revealed pier cap deterioration. As a result of these findings, the City implemented new weight restrictions limiting loads to 10,000 pounds. King County’s Chief Structural Engineer subsequently reduced the “Substructure Overall Condition Rating” to 2 – Critical and recommended increasing the inspection frequency to every six months until repairs are completed. Public Works is currently coordinating with Gray & Osborne’s structural engineering team and King County Road Services Division to identify a feasible corrective action that will restore the bridge’s original rating of five tons per axle.



- MEDINA PARK NORTH STORMWATER POND** – This project will have several components with permitting being the most time-intensive piece of the process. Vegetation and sediment removal will also have its challenges due to the restrictions for in-water work which is July 1st – September 30th. Before the work can begin, permits from the Washington State Department of Fish and Wildlife (WDFW), Washington State Department of Ecology (Ecology), United States Army Corps of Engineers (Corps), Medina Development Services, and local Tribes will need to be in-hand prior to going out for bid. Each of these entities will have specific requirements and documentation. The current outlook is to complete the vegetation removal during the 2026 in-water work period.

