



CITY OF MEDINA

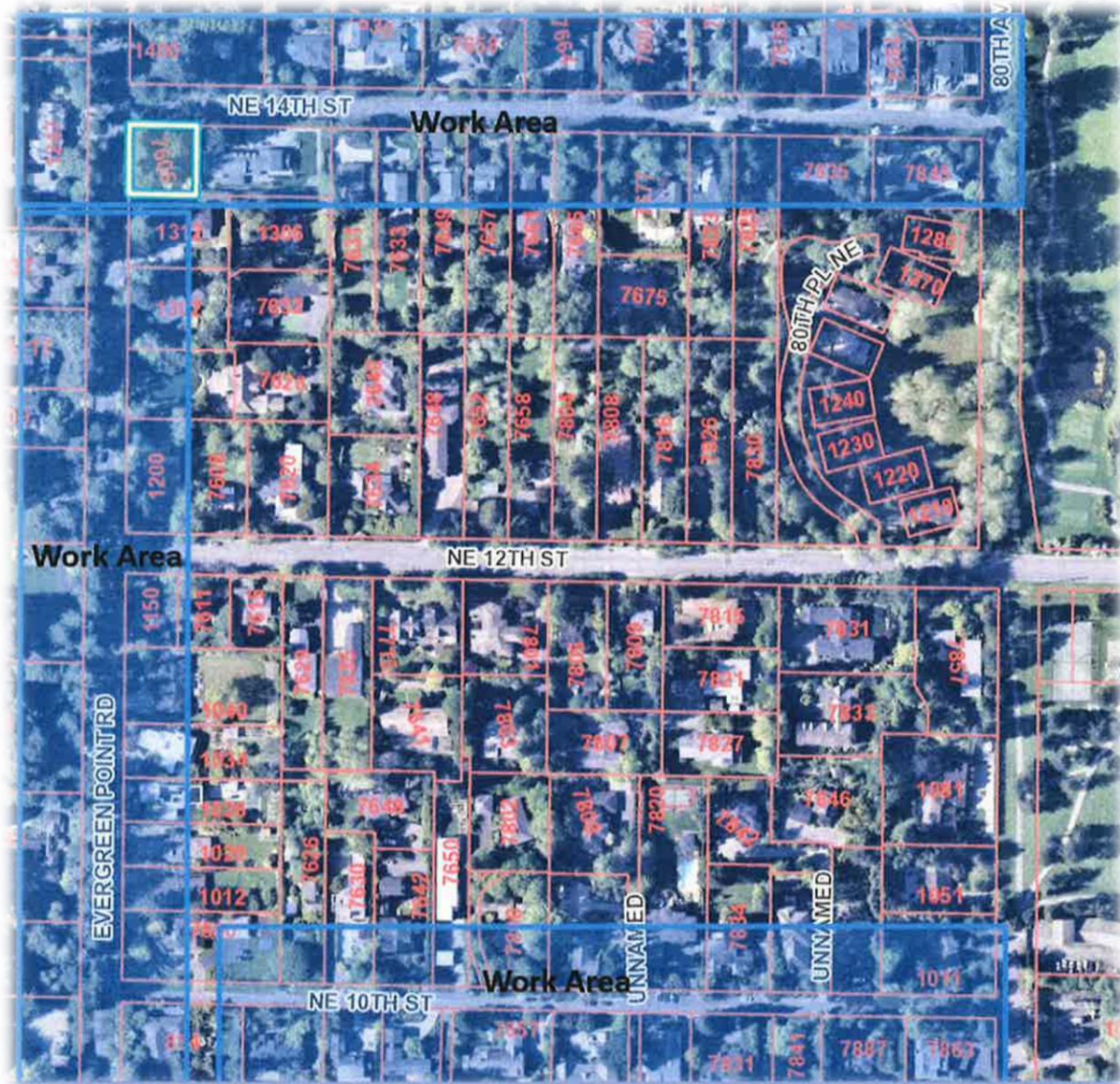
501 EVERGREEN POINT ROAD | PO BOX 144 | MEDINA WA 98039-0144
TELEPHONE 425-233-6400 | www.medina-wa.gov

Date: July 11, 2022
To: Honorable Mayor and City Council
Via: Stephen R. Burns, City Manager
From: Ryan Osada, Public Works Director
Subject: Public Works Monthly Report

- MEDINA PARK HERONS** – Last month the city received calls regarding the herons at Medina Park, near the south pond. The caller stated that fledglings were being attacked by dogs in the off-leash area. After contacting and discussing the issue with WDFW, it was decided that signs and fencing would be installed to protect the heron during rookery season.



2. **BELLEVUE AC WATERMAIN PROJECT** – City of Bellevue will undergo a large AC Watermain replacement project starting in mid-July. The project will replace the waterline on NE 14th ST, Evergreen Point Road, and NE 10th ST. The project is scheduled to last through the summer with a completion date of September 30th.



3. **LAKE LINE MANAGEMENT** – Angela Chung with the City of Bellevue has been keeping us informed and updated regarding the Lake Line management plan. The outreach flyers and letters were recently sent to those who will be impacted. We currently have meetings scheduled quarterly to discuss progress and receive copies of all the material that goes out to the community.

Bellevue Utilities News



Information about your water, wastewater, drainage, solid waste utility services

| 2022 Issue 3

City mulls options for aging lakefront sewer line

Residents can offer input for management plan



A Utilities worker checks the lake line.

Nearly 15 miles of sewer line run along the eastern shore of Lake Washington, serving Utilities customers in Bellevue, Medina, Beauv Arts, unincorporated King County and the Points communities. The pipes that constitute the line were built in the 1950s

and '60s, and Bellevue Utilities is considering how best to manage them for continued reliable wastewater services and protection of the lake's ecosystem. The department is developing a long-term management plan for rehabilitation and/or replacement of the pipes, which run in or near the lake. Details about the lake line and a link to a survey can be found at BellevueWA.gov/lake-washington-line. Feedback on potential solutions is welcome.

To understand the potential impacts of this plan's implementation on the environment, the city is also developing an environmental impact

Five actions you can take to prevent water pollution

Only rain should go down a storm drain. Untreated stormwater flows directly into local streams and lakes, harming salmon.

1. **Sweep; skip pressure washing.** If you must pressure wash, sweep first and divert water into the soil.
2. **Wash your car at a commercial car wash.** Otherwise, dirty water goes to the sewer for treatment.
3. **Fix vehicle leaks.** Visit FixCarLeaks.org for info on free leak inspections and a repair coupon for participating Bellevue repair shops.
4. **Scoop the poop, bag it and place in trash.** Pet

4. PROJECT UPDATES –

2015 Medina Park Stormwater Pond Imp. – We are looking into alternate ways to dredge the stormwater ponds. Overlake Golf & Country Club is applying for a permit to dredge the northern ponds. Depending on the outcome, the city may use the same method.

2017 Medina Beach Park Tree Replanting – Phase III tree planting.

Medina Park Playground Improvements – completed

Post Office Floor Replacement – Our public works staff will evaluate the subfloor structure and recommended replacement scope.

Citywide Stormwater System Mapping & Evaluation – G&O has completed most of the mapping. We are currently working on scoping and mapping the storm infrastructure that is located on several private properties.

2022 Hazardous Tree Removal – in review

NE 12th Street Sidewalk Improvements & Undergrounding – finalizing 90% construction drawings. Still waiting for final drawings for luminaire locations. First round of notices was sent to residents along the corridor.

77th Ave NE Stormwater Repair – completed

TIB_NE 7th Street Overlay – 84th Ave NE to Overlake Dr – on consent

77th Ave NE Storm Repair Phase 2 & Phase 3 – partially completed with Phase 1

2022 Localized Repair_Stormwater – site added on Overlake Dr E

2022 City Hall Repairs – Miscellaneous – in review