

An aerial photograph of a braided river system. The water channels are a vibrant blue-green color, winding and branching across a landscape of golden-brown and tan sediment bars and islands. The overall pattern is complex and organic, resembling a network of veins or a web.

Landscaping and Water Conservation

Amanda Hoff

Holly Suess

Garrett Dickson



- History of Little Thompson
- Evolving District
- Water and Land Use Integration
- LTWD Water Conservation

Little Thompson

- Local farming community formed the district in the '60s to manage and deliver drinking water
- We have absorbed other municipal entities and changed customer base over time
- Currently, we serve 9,500 residential and 350 non-residential customers in five municipalities across three counties



Future Growth along the Front Range

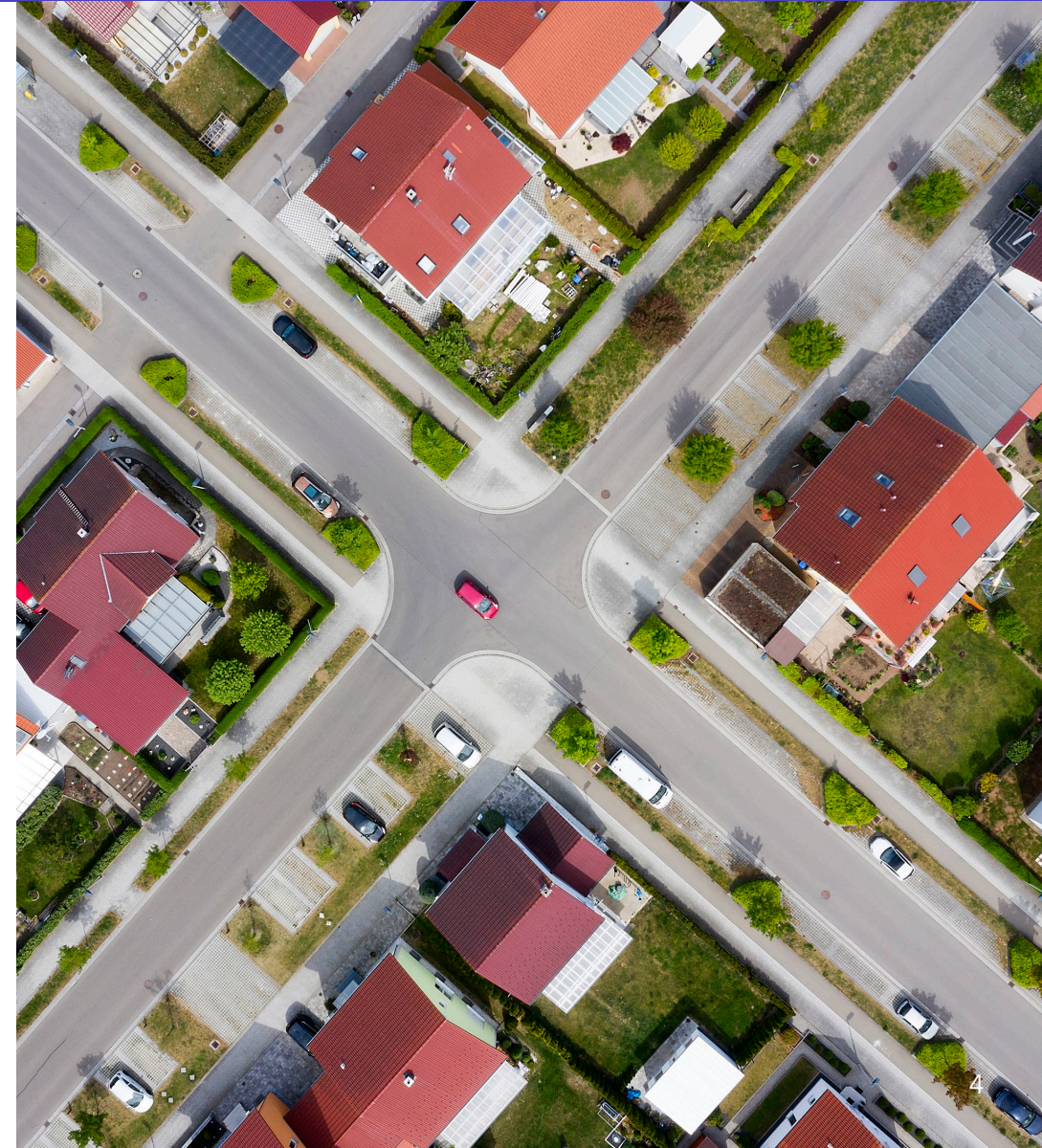
Colorado Population versus Front Range Population

2023:
5.7 million

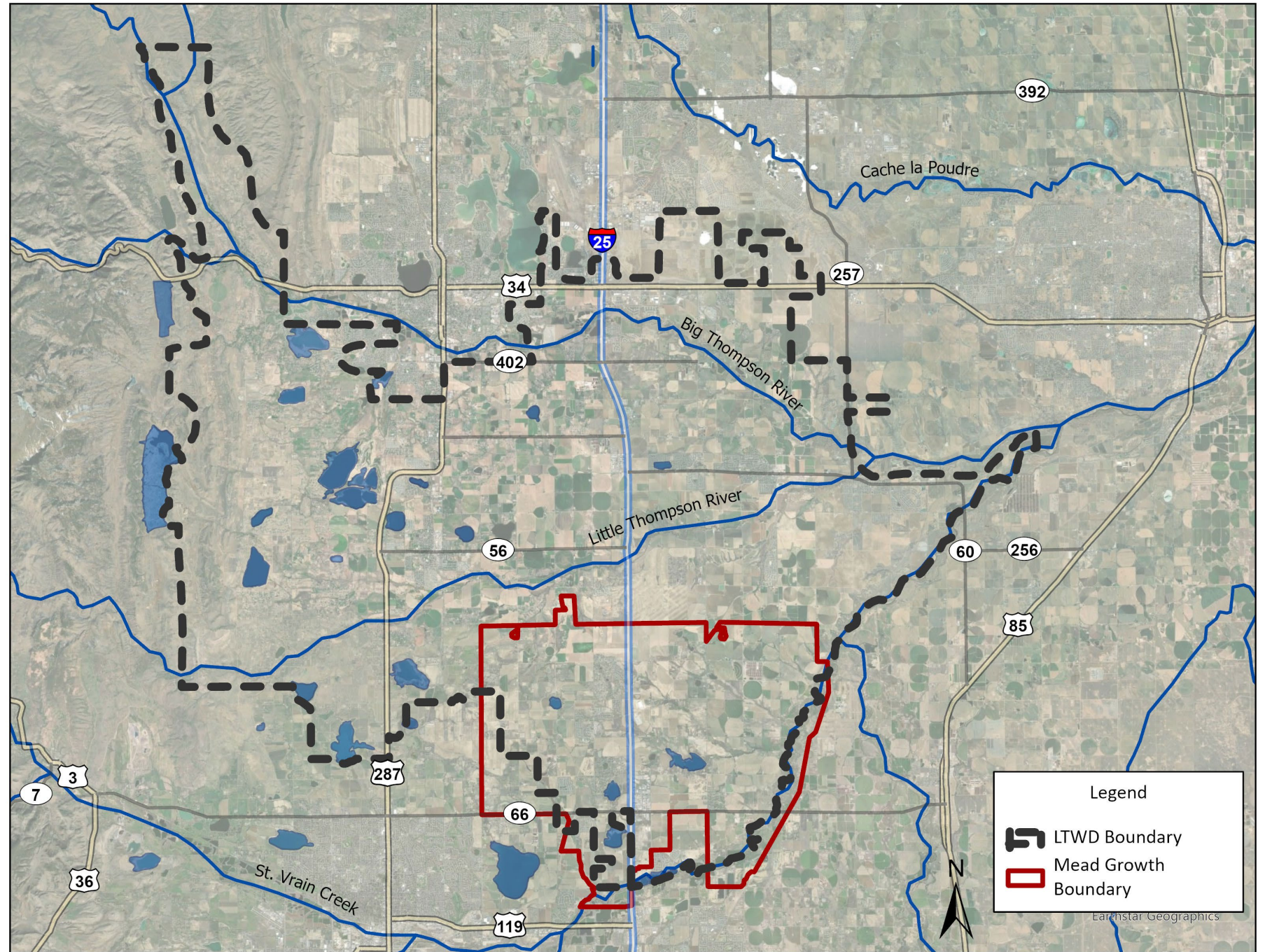
Front Range:
4.9 million

2025:
7.5 million

Front Range:
6.4 million



Mead Growth Boundary within Little Thompson



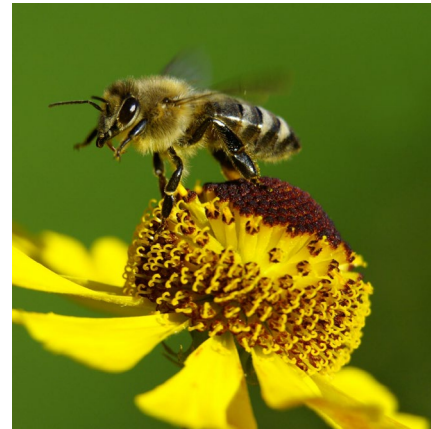


Landscaping Historically

- Largely turf driven
- Water-abundant mentality
- Non-essential turf popular
- Inefficient irrigation systems
- Little to no water use restrictions

Landscaping Moving Forward

- Reduce outdoor water use
 - Utilize high efficiency irrigation systems
 - Prioritize native or hydrozone-appropriate plants
 - Prioritize essential turf
 - Increase habitat
 - Limit turf to the back yard
 - Buffer between turf areas and pavement



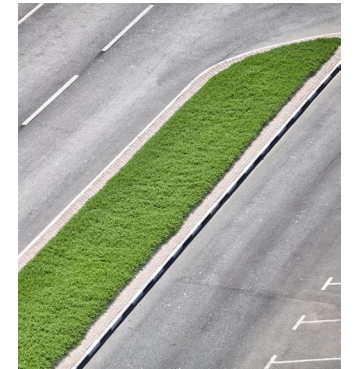
Essential Turf

- What is essential turf?
 - Irrigated lawn grass area that provides recreational benefit
 - Located 10 feet away from streets
 - Slopes less than 25%
 - Not installed within street medians, along streetscapes or at the entryways to parks, commercial sites or neighborhoods



Non- Essential Turf

- What is non-essential turf?
 - Turf along streets
 - Turf on steep slopes
 - Turf in medians or entryways
 - Turf in building frontage or courtyards
 - Turf in medians or roundabouts
 - Turf in community frontage



Little Thompson's Authority



- LTWD has **no land use authority**
- Need Mead's help in fostering a waterwise community
- Regional land use code review shared with the Town of Mead

How can the Town of Mead Help?

Mead has the opportunity to implement land use code to help with water efficiency.



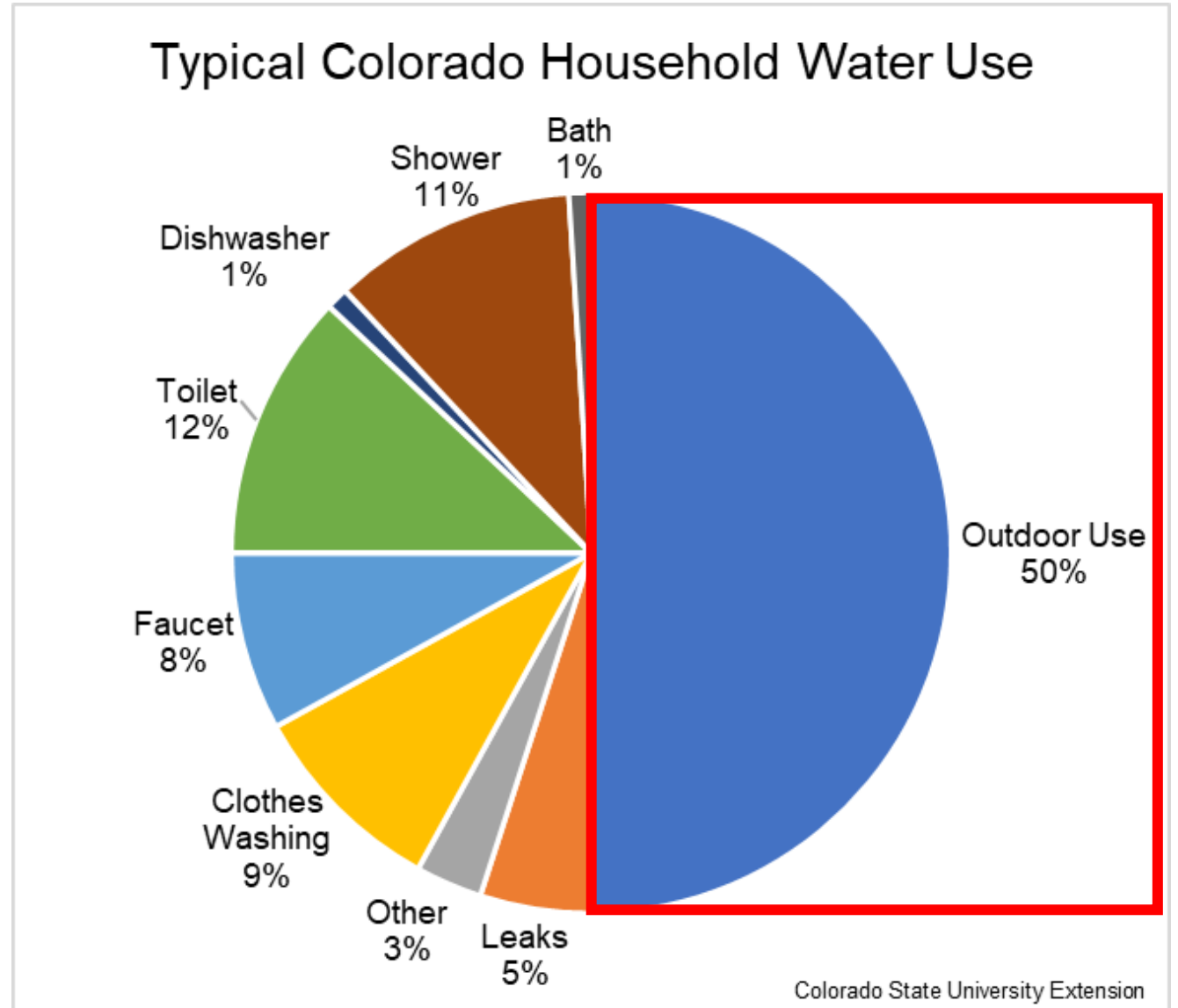
- Articulate maximum allowable turf
- Incentivize waterwise landscaping with rebates
- Coordinate with developers
- Deliver consistent and relevant regional messaging
- Advertise resources for success



LTWDs efforts to conserve water

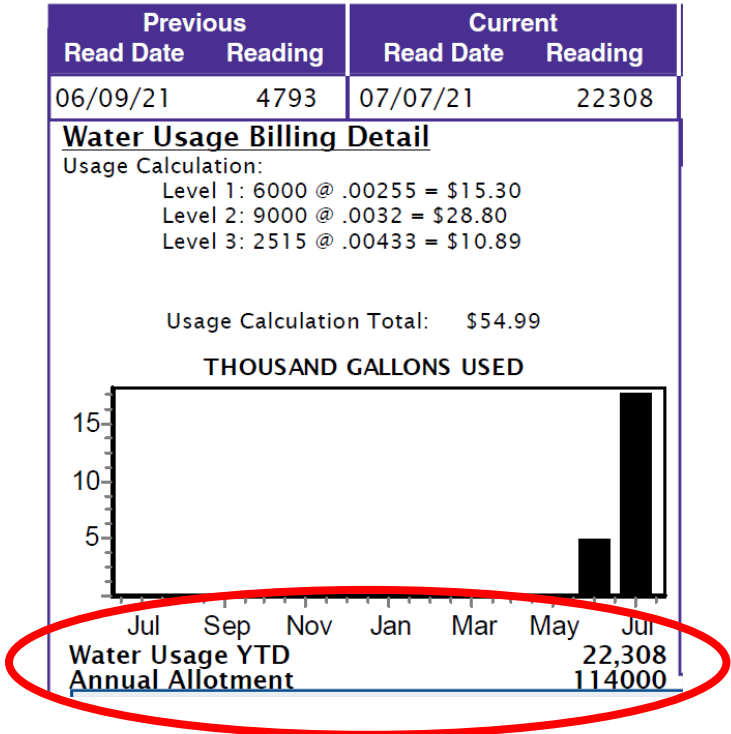
- Water Shortage Contingency Plan
 - Mandatory 3-day per week watering days
- Encourage customers to stay within allotment
 - Increasing upper tier rates
 - Recommended turf size
- Introduce new tap sizes to address evolving district

Water Use

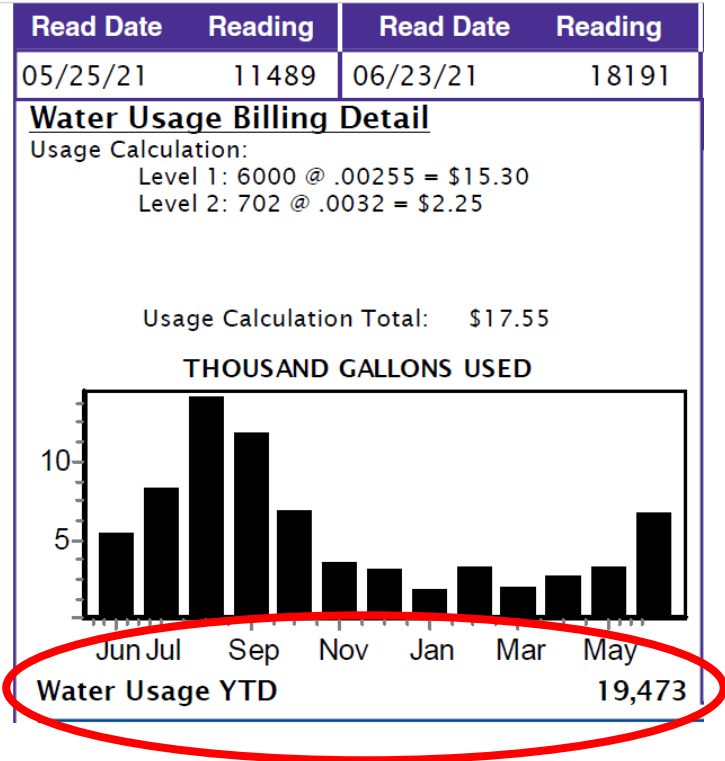


Annual Water Allotments

**Urban Tap:
114,000 gallons**



**Standard Tap:
228,000 gallons**



Mead's Help

- Water Contingency Plan Action Level
 - Mandatory Watering Days before 10 am or after 6 pm
 - Even addresses: Monday, Wednesday, and Saturday
 - Odd addresses: Tuesday, Thursday, and Sunday
- Annual allotments
 - Eye on Water App
- Water and Land Use Integration
- Non-Potable
- Long-term supplies



Water Conservation Resources



- Resource Central
 - Lawn Replacement
 - Slow the Flow Sprinkler Audits
 - Waterwise Landscape Seminars
- LTWD Rebates
 - Soil Amendment
 - Water-Saving Tree and Plants
 - Smart Irrigation Controller
- CSU Extension
- Colorado Waterwise
- Northern Water
- Follow us on Facebook

Thank you



- Amanda Hoff - ahoff@ltwd.org
- Holly Suess - hsuess@ltwd.org
- Garrett Dickson - gdickson@ltwd.org