

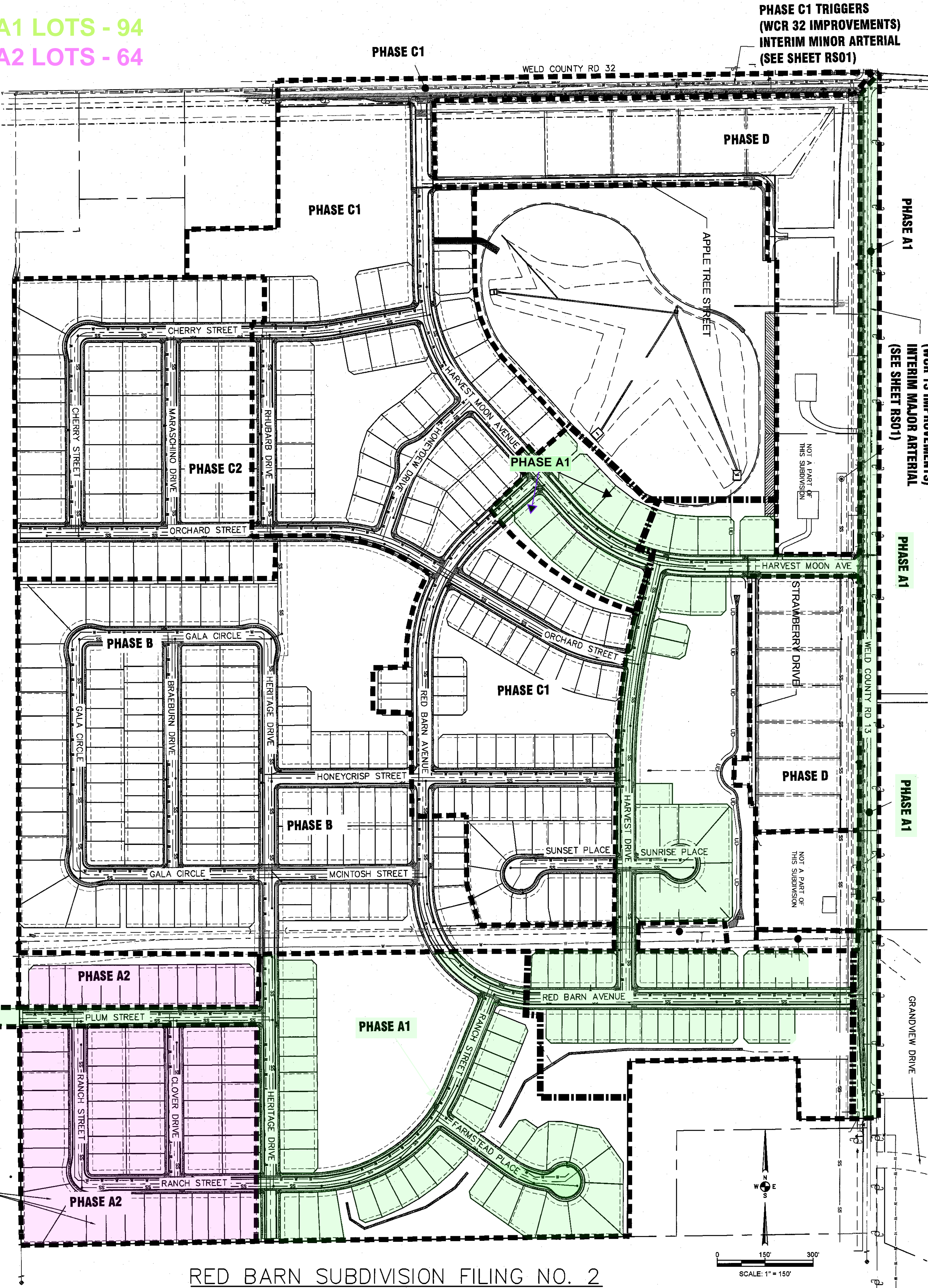
PHASE A1 LOTS - 94  
PHASE A2 LOTS - 64

PHASE C1 TRIGGERS  
(WCR 32 IMPROVEMENTS)  
INTERIM MINOR ARTERIAL  
(SEE SHEET RS01)

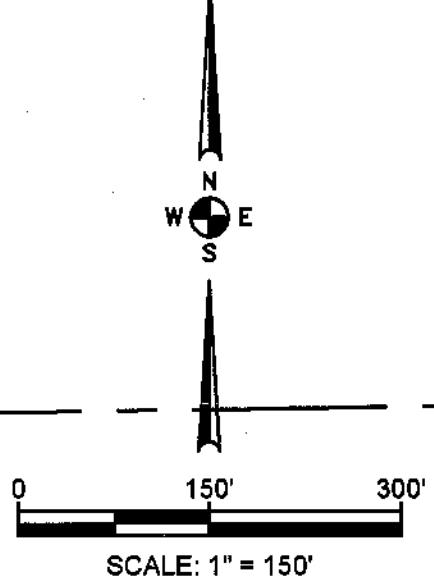
TOWN OF MEAD APPROVAL  
THESE PLANS ARE HEREBY APPROVED FOR ONE YEAR  
FROM DATE OF THE TOWN ENGINEER'S APPROVAL.  
APPROVED BY: *[Signature]* 5/11/2021  
TOWN ENGINEER DATE

PHASE A1  
PLEASE SEE NOTE #4 UNDER  
PLAN NOTES ON SHEET PLOT  
OF THE FINAL PLAT  
OFFSITE UTILITIES ARE  
SHOWN ON FINAL PLANS,  
SHEETS OF-01-OF-14

PHASING LEGEND  
INDICATES PHASING BOUNDARY  
CP-# CONSTRUCTION PHASE #



RED BARN SUBDIVISION FILING NO. 2



- PHASING NOTES:
1. PHASE A1 IS CONSIDERED THE FIRST
  2. CONSTRUCTION OF THE DETENTION POND
  3. 48" STORM SEWER UNDER HARVEST MOON AVENUE TO BE CONSTRUCTED WITH PHASE A1.
  4. THERE ARE 2' WIDE AND 3' WIDE CONCRETE PANS PROPOSED WITHIN THE DETENTION POND. THERE IS ALSO A 5' WIDE AND 1.5' HIGH CONCRETE CHANNEL LIVING THE LARGE DRAINAGE SWALE THAT CONVEYS FLOW FROM THE SOUTH SIDE OF THE DETENTION POND TO THE SOUTH SIDE OF THE DETENTION POND. SEE DETAIL SHEET A1.
  5. CONSTRUCTION OF OFFSITE WATER LINE AND SANITARY SEWER LINE WILL NEED TO TAKE PLACE IN PHASE A1. PLUM STREET DOES NOT NEED TO BE CONSTRUCTED DURING THIS PHASE.
  6. CONSTRUCTION OF PHASE A1 IMPROVEMENTS IS TRIGGERED BY PHASE A1 AND MUST BE CONSTRUCTED IN THIS PHASE.
  7. WATERLINE IN WCR 32 WILL BE CONSTRUCTED WITH PHASE C1.
  8. PHASE C1 TRIGGERS (WCR 32 IMPROVEMENTS).
  9. BASED ON EXISTING WATER TABLE DEPTHS AND PROPOSED SANITARY SEWER DEPTHS, THE DETENTION POND AND LOTS ARE NOT RECOMMENDED TO HAVE BASEMENTS.
  - 9.1. BLOCKS 1-2
  - 9.2. BLOCK 3
  - 9.3. BLOCK 4, LOTS 1-2
  - 9.4. BLOCK 7
  - 9.5. BLOCK 14, LOTS 1-2
  - 9.6. BLOCK 15
  - 9.7. BLOCK 16, LOTS 30-35
  - 9.8. BLOCK 21
  - 9.9. BLOCK 22, LOTS 1-2 & 22-24
  - 9.10. BLOCK 26
  - 9.11. BLOCKS 30-31
  - 9.12. BLOCKS 34-47

LOT TABLE

PHASE A1	94
PHASE A2	64
PHASE B	121
PHASE C1	103
PHASE C2	55
PHASE D	13
TOTAL	450