

PROJECT NAME:

NEW SHEETZ STORE

MADISON HEIGHTS  
DEQUINDRE RD.

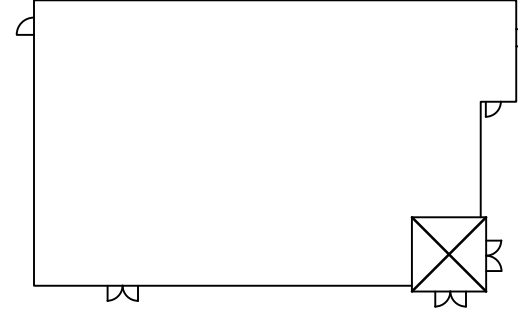
Int. of Dequindre Road  
and 13 Mile Road  
Madison Heights, MI 48071

OWNER:  
SHEETZ, INC.

5700 SIXTH AVE.  
ALTOONA, PA 16602

CONSULTANT

PROFESSIONAL



KEYPLAN

ISSUE: 02.13.2024  
SITE ID NO: 214500  
AUTHOR BY: RJK  
REVIEW BY: RJH  
VERSION: 6132R\_v1.5.5

EXTERIOR  
ELEVATIONS

A200

PRELIMINARY ELEVATIONS



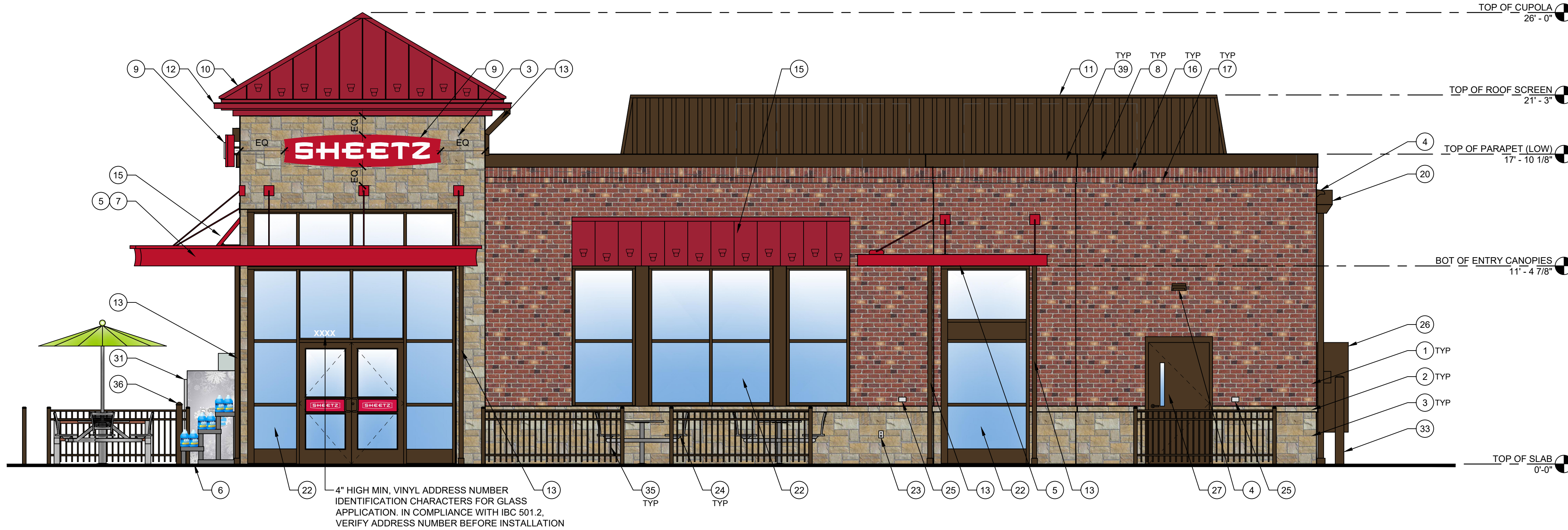
1 FRONT ELEVATION  
1/4" = 1'-0"

TYPICAL EXTERIOR ELEVATION NOTES:

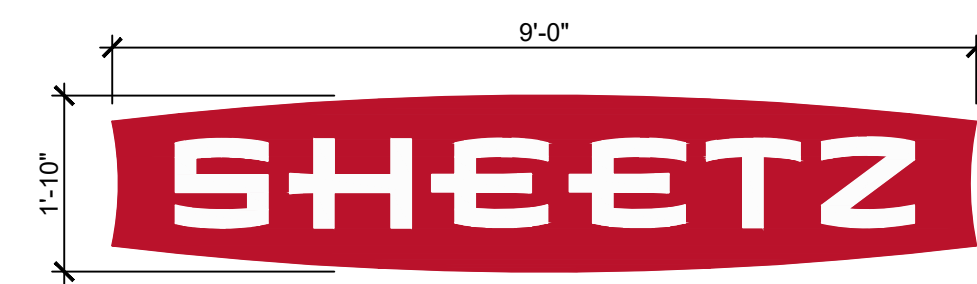
- ALL LIGHTS SHOWN ABOVE AND/OR BELOW DOORS OR WINDOWS ARE TO BE CENTERED ON THE DOOR OR WINDOW UNLESS NOTED OTHERWISE.
- FIXTURES/EQUIPMENT BETWEEN TWO DOORS OR WINDOWS ARE TO BE CENTERED EQUALLY.
- EXTERIOR SEALANT FOR STONE SHALL COMPLY WITH SECTION 07 9005 JOINT SEALANTS, GENERAL BUILDING FASCIA/WEATHER SEALANT AND SHALL MATCH THE COLOR OF THE STONE.

EXTERIOR ELEVATION KEYNOTES:

- BRICK VENEER, COLOR: 680 BY CONTINENTAL BRICK COMPANY. SEE MASONRY SPEC
- CAST STONE SILL, COLOR: CRAB ORCHARD. SEE MASONRY SPEC
- ANCHORED CAST STONE MASONRY VENEER, COLOR: CRAB ORCHARD. SEE MASONRY SPEC
- EXTERIOR LIGHT FIXTURE, REFER TO ELECTRICAL DRAWINGS
- ARCHITECTURAL CANOPY, COLOR: REGAL RED, PREMIUM TWO-COAT KYNAR FINISH
- BRICK PAVEMENT WALKWAY
- LIGHTED CURVED FASCIA CANOPY ATTACHMENT
- METAL COPING, COLOR: DARK BRONZE
- WALL MOUNTED BUILDING SIGN, SEE SHEET A200.
- STANDING SEAM METAL ROOF, COLOR: BRITISH RED
- ROOF EQUIPMENT SCREEN, COLOR: DARK BRONZE
- GUTTER, COLOR TO MATCH CUPOLA COLOR
- DOWNSPOUT, COLOR: DARK BRONZE
- DRIVE-THRU WINDOW (IF APPLICABLE)
- METAL STANDING SEAM SHED STYLE AWNING AND FRAME ASSEMBLY, ROOF COLOR: BRITISH RED, FRAME COLOR: DARK BRONZE
- BRICK SOLDIER COURSE, COLOR: 680 BY CONTINENTAL BRICK COMPANY. SEE MASONRY SPEC
- BRICK ROWLOCK COURSE, COLOR: 680 BY CONTINENTAL BRICK COMPANY. SEE MASONRY SPEC
- CONTROL JOINT, SEE MASONRY SPEC
- STEEL ROOF LADDER AND CRANKY POST, COLOR: DARK BRONZE
- STANDARD THROUGH WALL SCUPPER WITH CONDUCTOR HEAD & DOWNSPOUT, COLOR: DARK BRONZE
- OVERFLOW SCUPPER
- ALUMINUM STOREFRONT SYSTEM, SEE A600
- EXTERIOR HOSE BIB, REFER TO PLUMBING DRAWINGS
- OUTDOOR FURNITURE
- ELECTRICAL RECEPTACLE, REFER TO ELECTRICAL DRAWINGS
- ELECTRICAL EQUIPMENT, REFER TO ELECTRICAL DRAWINGS
- HM DOOR AND FRAME, COLOR: DARK BRONZE
- EMERGENCY WATER CONNECTION, REFER TO PLUMBING DRAWINGS
- SEAMLESS ALUM PANEL SYSTEM WITH EXPOSED FASTENERS, COLOR: DARK BRONZE
- PROPANE LOCKER
- ICE MERCHANDISER
- RTI FILLPORT
- STEEL BOLLARD, COLOR: DARK BRONZE
- CO2 FILLPORT
- DECORATIVE ALUMINUM FENCE, COLOR DARK BRONZE
- AUTOMATIC DOOR PUSH PLATE AND BOLLARD, BOLLARD COLOR: DARK BRONZE
- GAS METER AND RISER, REFER TO CIVIL UTILITY PLAN, COLOR: DARK BRONZE
- MTO GRAPHIC DECAL, SEE SHEET A200.
- LIGHT CHANNEL AT PARAPET COPING, SEE ARCHITECTURAL AND ELECTRICAL DRAWINGS FOR MORE INFORMATION.



2 LEFT ELEVATION  
1/4" = 1'-0"



A WALL MOUNTED "SHEETZ" BUILDING SIGN  
1/2" = 1'-0"



B WALL MOUNTED "MTO" DECAL  
1/2" = 1'-0"

PROJECT NAME:

NEW SHEETZ STORE

MADISON HEIGHTS  
DEQUINDRE RD.

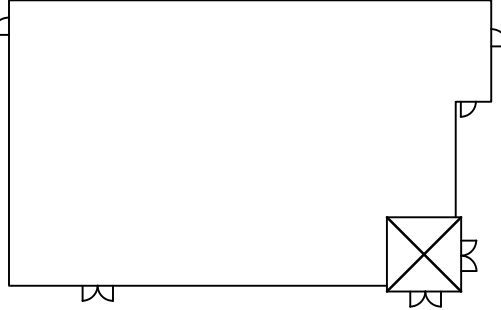
Int. of Dequindre Road  
and 13 Mile Road  
Madison Heights, MI 48071

OWNER:  
SHEETZ, INC.

5700 SIXTH AVE.  
ALTOONA, PA 16602

CONSULTANT

PROFESSIONAL



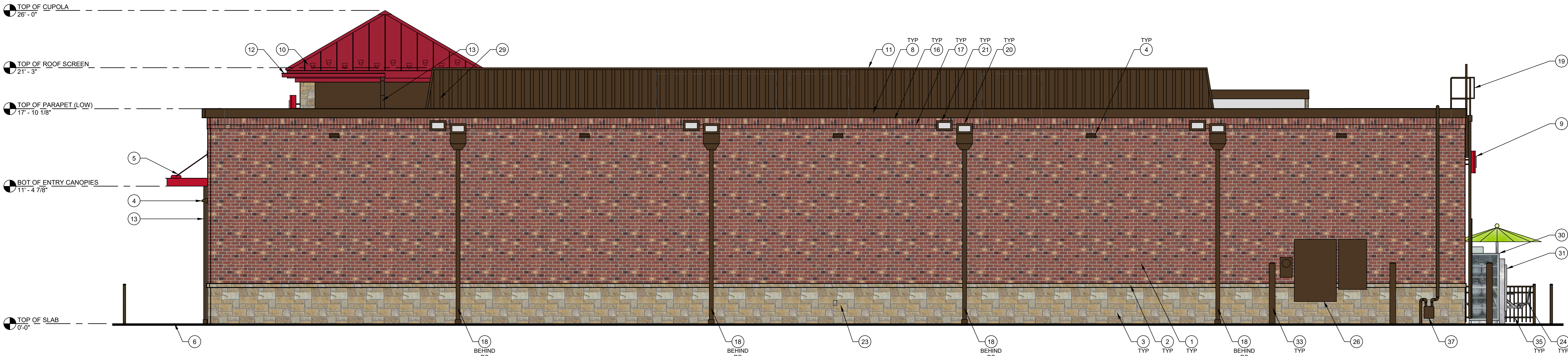
KEYPLAN

ISSUE: 02.13.2024  
SITE ID NO: 214500  
AUTHOR BY: RJK  
REVIEW BY: RJH  
VERSION: 6132R\_v1.5.5

EXTERIOR  
ELEVATIONS

A201

PRELIMINARY ELEVATIONS



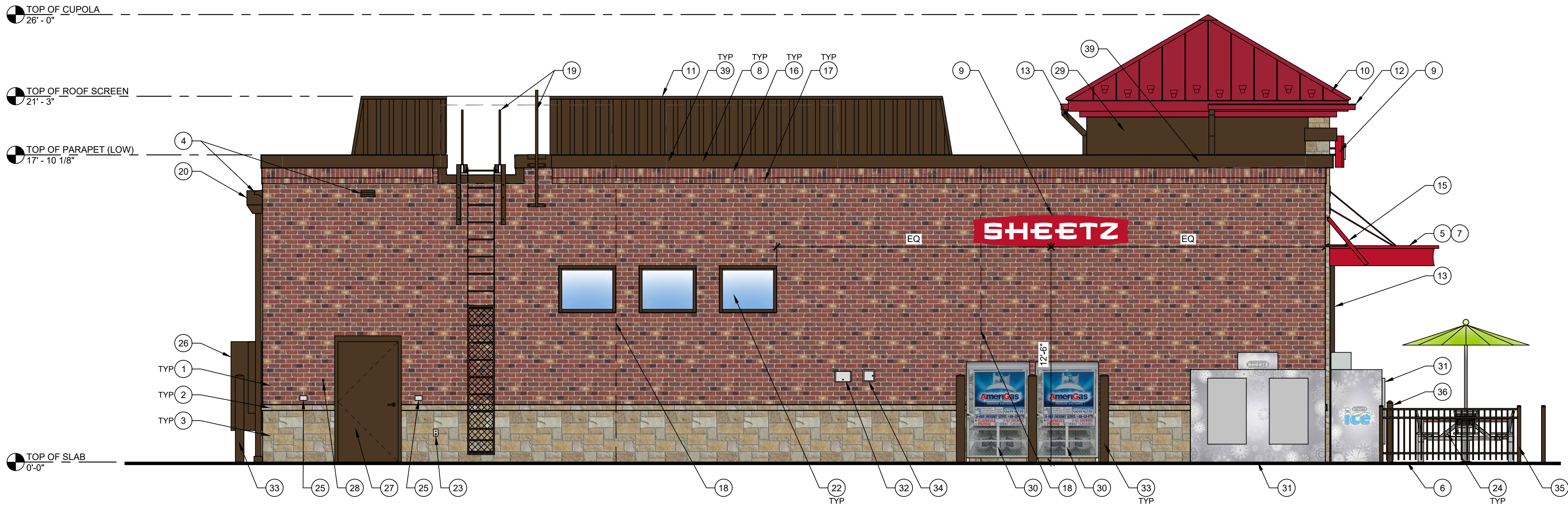
3 REAR ELEVATION  
1/4" = 1'-0"

TYPICAL EXTERIOR ELEVATION NOTES:

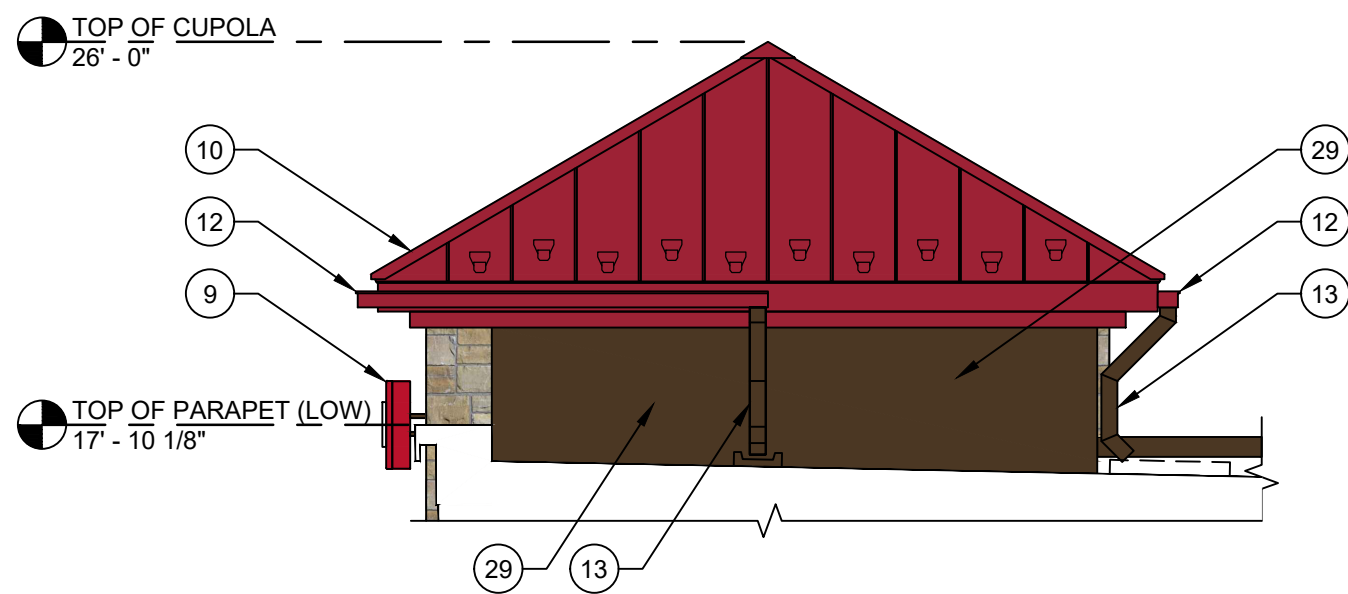
- ALL LIGHTS SHOWN ABOVE AND/OR BELOW DOORS OR WINDOWS ARE TO BE CENTERED ON THE DOOR OR WINDOW UNLESS NOTED OTHERWISE.
- FIXTURES/EQUIPMENT BETWEEN TWO DOORS OR WINDOWS ARE TO BE CENTERED EQUALLY.
- EXTERIOR SEALANT FOR STONE SHALL COMPLY WITH SECTION 07 9005 JOINT SEALANTS, GENERAL BUILDING FASCIADE WEATHER SEALANT AND SHALL MATCH THE COLOR OF THE STORE.

EXTERIOR ELEVATION KEYNOTES:

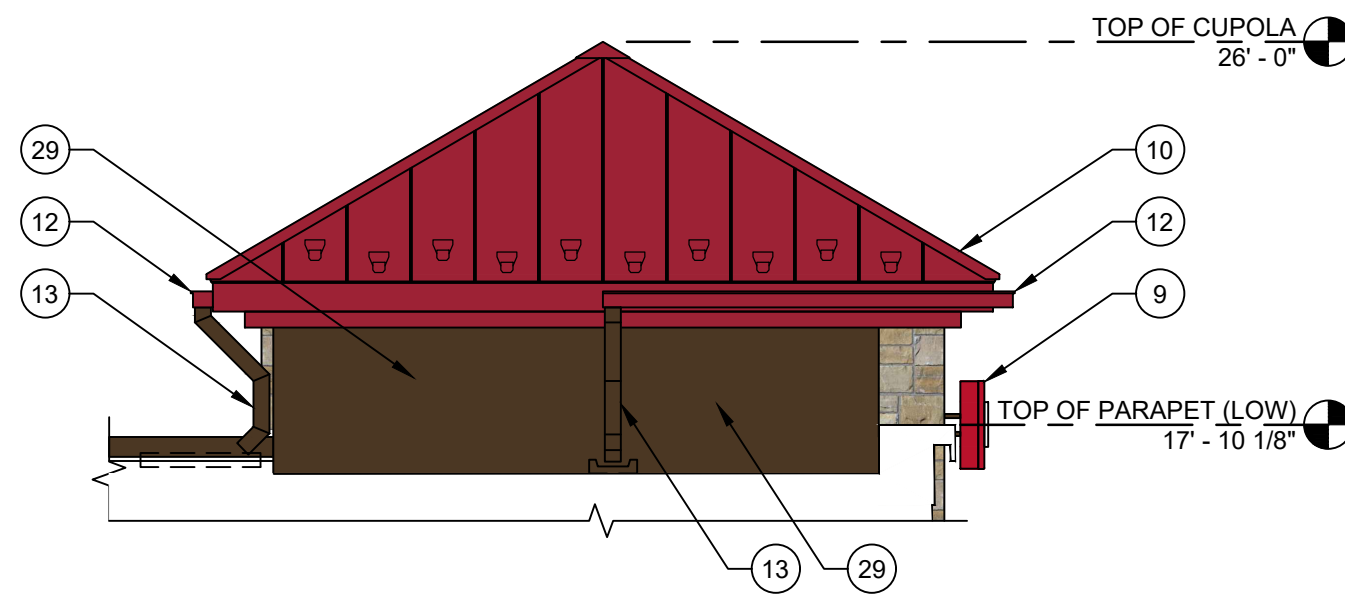
- BRICK VENEER, COLOR: 680 BY CONTINENTAL BRICK COMPANY. SEE MASONRY SPEC
- CAST STONE SILL, COLOR: CRAB ORCHARD. SEE MASONRY SPEC
- ANCHORED CAST STONE MASONRY VENEER, COLOR: CRAB ORCHARD. SEE MASONRY SPEC
- EXTERIOR LIGHT FIXTURE, REFER TO ELECTRICAL DRAWINGS
- ARCHITECTURAL CANOPY, COLOR: REGAL RED, PREMIUM TWO-COAT KYNAR FINISH
- BRICK PAVER WALKWAY
- LIGHTED CURVED FASCIA CANOPY ATTACHMENT
- METAL COPING, COLOR: DARK BRONZE
- WALL MOUNTED BUILDING SIGN, SEE SHEET A200.
- STANDING SEAM METAL ROOF, COLOR: BRITE RED
- ROOF EQUIPMENT SCREEN, COLOR: DARK BRONZE
- GUTTER, COLOR TO MATCH CUPOLA COLOR
- DOWNSPOUT, COLOR: DARK BRONZE
- DRIVE-THRU WINDOW (IF APPLICABLE)
- METAL STANDING SEAM SHED STYLE AWNING AND FRAME ASSEMBLY, ROOF COLOR: BRITE RED, FRAME COLOR: DARK BRONZE
- BRICK SOLDIER COURSE, COLOR: 680 BY CONTINENTAL BRICK COMPANY. SEE MASONRY SPEC
- BRICK ROWLOCK COURSE, COLOR: 680 BY CONTINENTAL BRICK COMPANY. SEE MASONRY SPEC
- CONTROL JOINT, SEE MASONRY SPEC
- STEEL ROOF LADDER AND CRANKY POST, COLOR: DARK BRONZE
- STANDARD THROUGH WALL SCUPPER WITH CONDUCTOR HEAD & DOWNSPOUT, COLOR: DARK BRONZE
- OVERFLOW SCUPPER
- ALUMINUM STOREFRONT SYSTEM, SEE A600
- EXTERIOR HOSE BIB, REFER TO PLUMBING DRAWINGS
- OUTDOOR FURNITURE
- ELECTRICAL RECEPTACLE, REFER TO ELECTRICAL DRAWINGS
- ELECTRICAL EQUIPMENT, REFER TO ELECTRICAL DRAWINGS
- HM DOOR AND FRAME, COLOR: DARK BRONZE
- EMERGENCY WATER CONNECTION, REFER TO PLUMBING DRAWINGS
- SEAMLESS ALUM PANEL SYSTEM WITH EXPOSED FASTENERS, COLOR: DARK BRONZE
- PROPANE LOCKER
- ICE MERCHANDISER
- RTI FILLPORT
- STEEL BOLLARD, COLOR: DARK BRONZE
- CO2 FILLPORT
- DECORATIVE ALUMINUM FENCE, COLOR DARK BRONZE
- AUTOMATIC DOOR PUSH PLATE AND BOLLARD, BOLLARD COLOR: DARK BRONZE
- GAS METER AND RISER, REFER TO CIVIL UTILITY PLAN, COLOR: DARK BRONZE
- MT0 GRAPHIC DECAL, SEE SHEET A200.
- LIGHT CHANNEL AT PARAPET COPING. SEE ARCHITECTURAL AND ELECTRICAL DRAWINGS FOR MORE INFORMATION.



4 RIGHT ELEVATION  
1/4" = 1'-0"



5 CUPOLA ELEVATION FROM ROOF  
1/4" = 1'-0"



6 CUPOLA ELEVATION FROM ROOF  
1/4" = 1'-0"



PROJECT NAME:  
**NEW SHEETZ STORE**  
**MADISON HEIGHTS**

Int. of East 13 Mile Road  
and Dequindre Road  
Madison Heights  
Michigan

OWNER:  
**SHEETZ, INC.**

5700 SIXTH AVE.  
ALTOONA, PA 16602

CONSULTANT

PROFESSIONAL

KEYPLAN

ISSUE: **02-01-24**  
PROJECT NO:  
AUTHOR BY: **DNC**  
REVIEW BY:  
SHEET TITLE

GAS AWNING

**AWNING**

