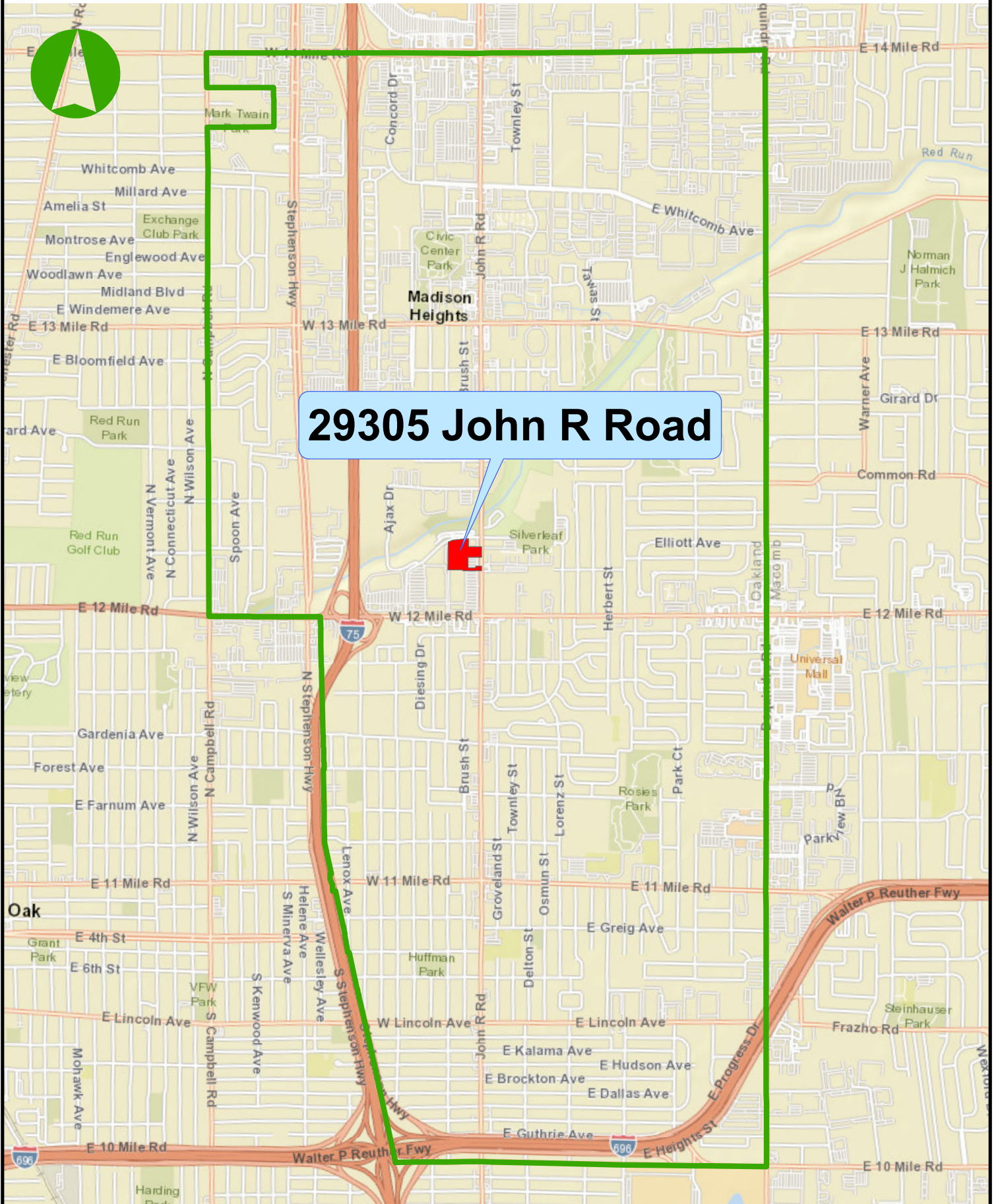


PZBA Case 25-02: 29305 John R Road

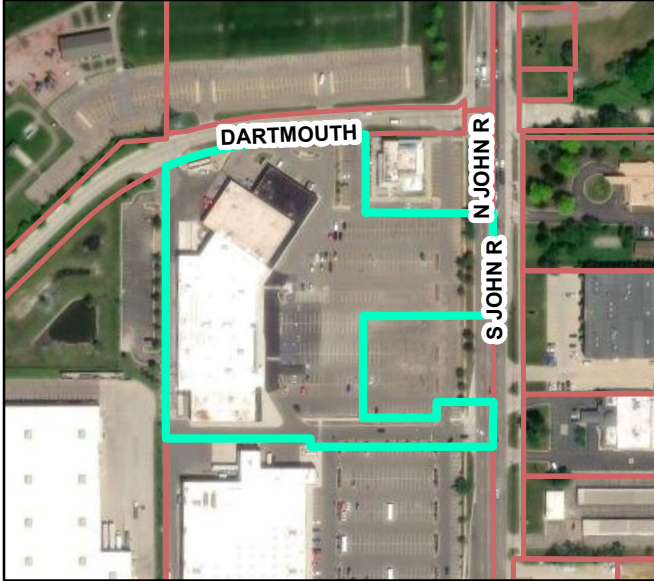


Site Address: 29305 John R Road



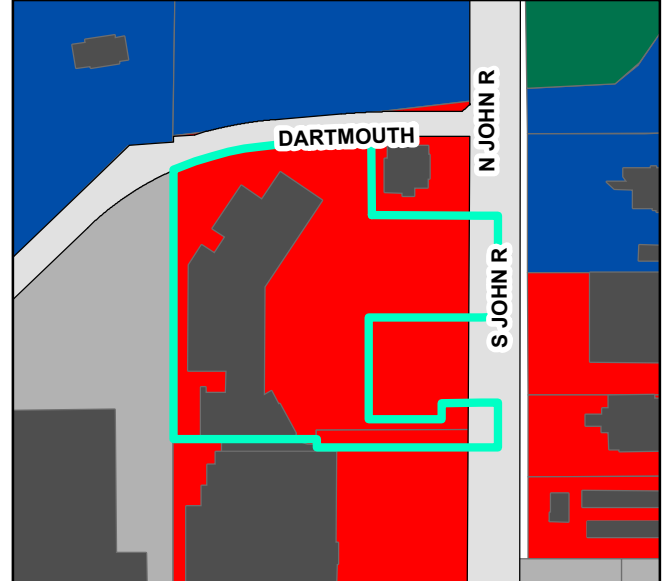
[Click for maps](#)

Aerial



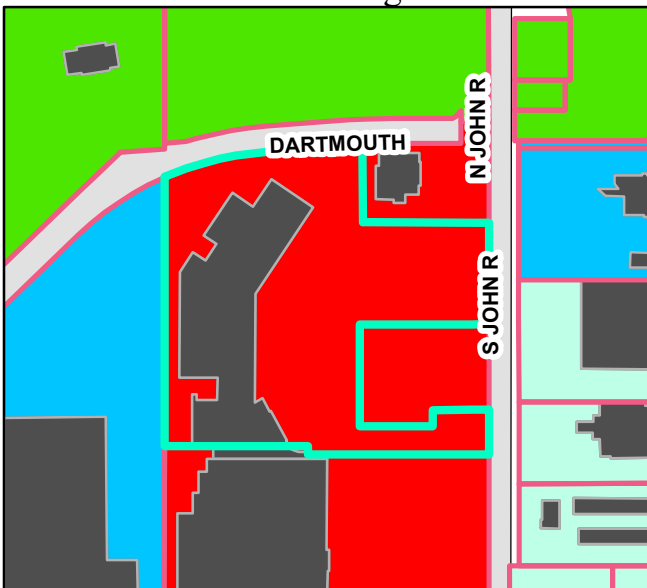
29305 John R Road Parcels

Existing Land Use



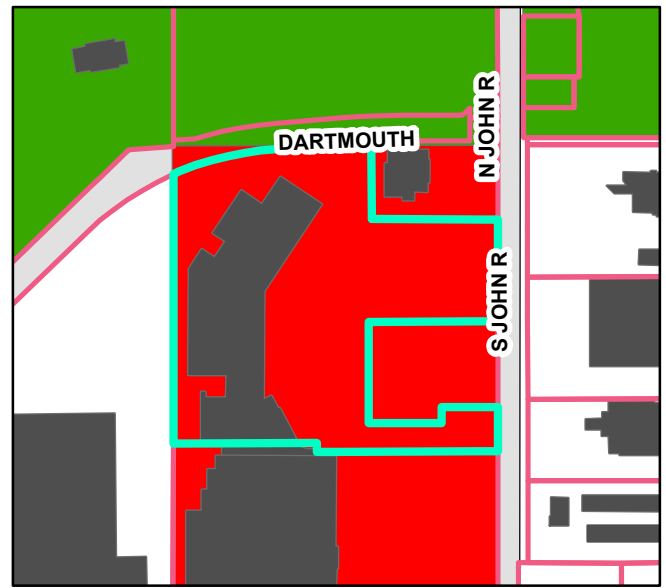
29305 John R Road Commercial
 Buildings Recreation
 Public Industrial

Zoning



29305 John R Road B-2
 Parcels N-P
 MUI2 MUI

Future Land Use



29305 John R Road Industrial
 Parcels Recreation
 Single Family Commercial

PZBA Case 25-02: 29305 John R Road Buffer 300 Ft

