

PZBA Case 25-03: 32275 Stephenson Hwy

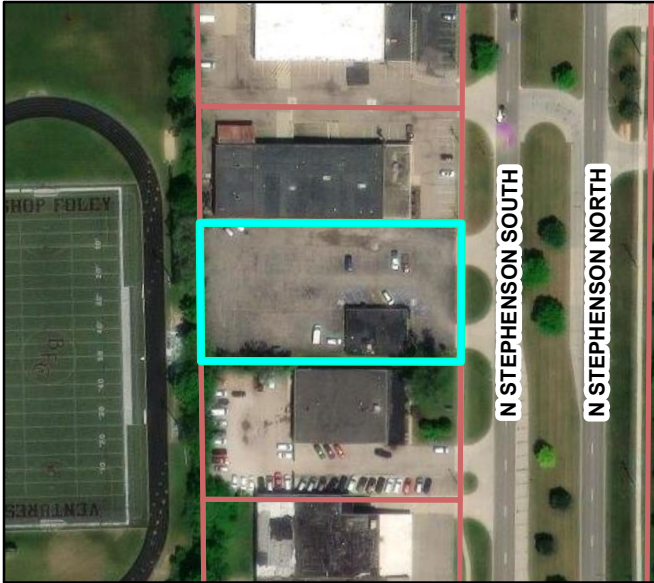


Site Address: 32275 Stephenson Hwy



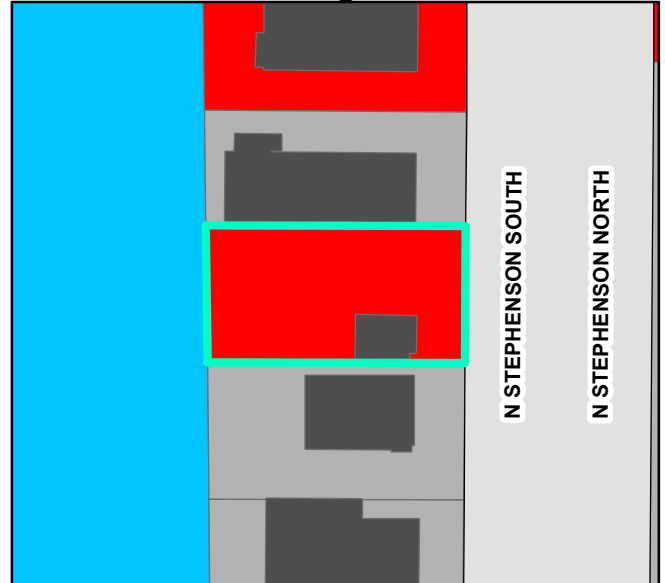
[Click for maps](#)

Aerial



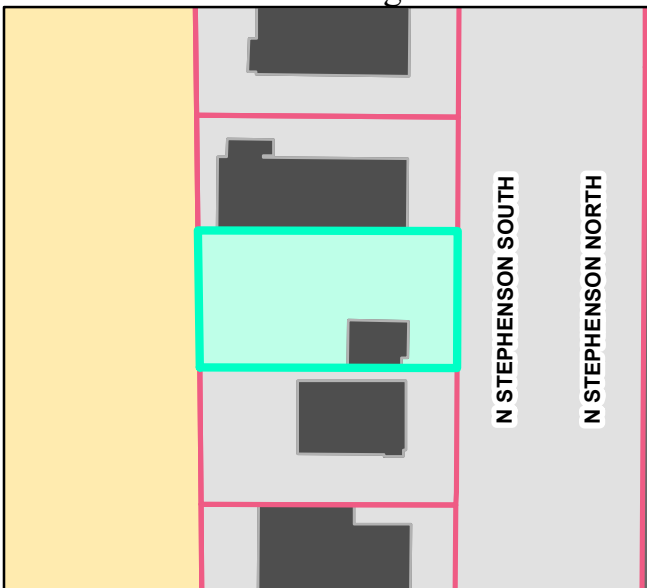
32275 Stephenson Hwy Parcels

Existing Land Use



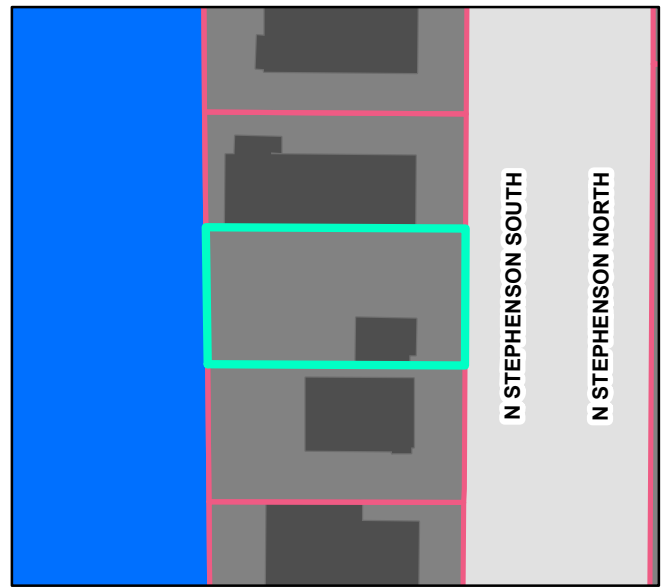
32275 Stephenson Hwy Commercial
 Buildings Industrial
 Quasi-public

Zoning



32275 Stephenson Hwy MUI
 Parcels R-2
 M-1

Future Land Use



32275 Stephenson Hwy Industrial
 Public and Schools Parcels

PZBA Case 25-03: 32275 Stephenson Hwy Buffer 300 Ft

