

PROJECT NAME:
NEW SHEETZ STORE
STORE #XXX

CITY
STREET

Address Line 1
Address Line 2
City, ST XXXXX

OWNER:
SHEETZ, INC.

5700 SIXTH AVE.
ALTOONA, PA 16602

CONSULTANT

PROFESSIONAL

KEYPLAN

ISSUE: 04.03.2023
SITE ID NO: #####
AUTHOR BY:
REVIEW BY:
VERSION: 6132L_v1.4

EXTERIOR
ELEVATIONS

A200

6132L PROTOTYPE - FY23_v1.4



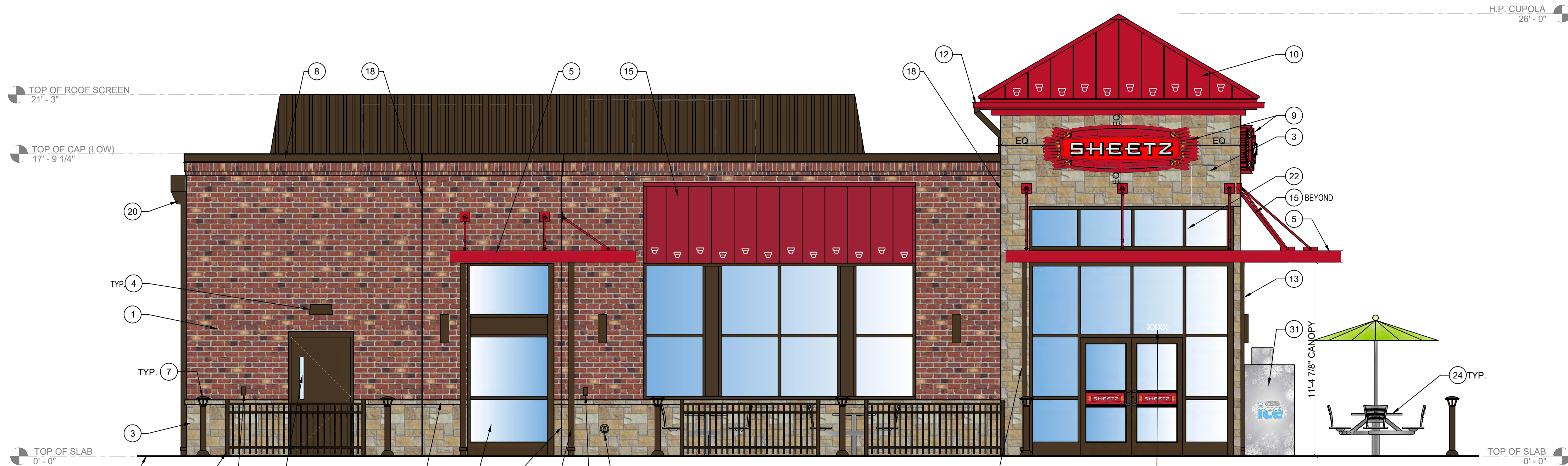
1 FRONT ELEVATION
1/4" = 1'-0"

TYPICAL EXTERIOR ELEVATION NOTES:

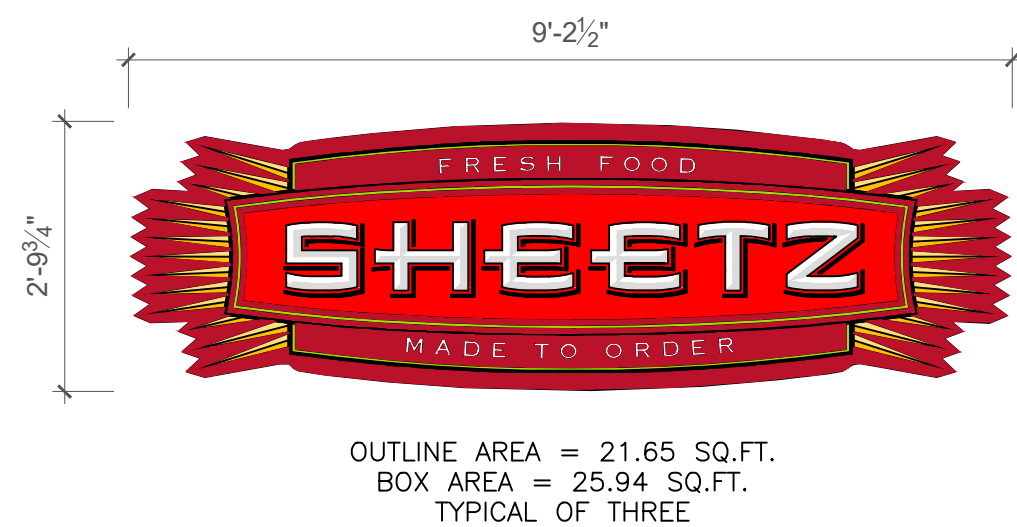
- ALL LIGHTS SHOWN ABOVE AND/OR BELOW DOORS OR WINDOWS ARE TO BE CENTERED ON THE DOOR OR WINDOW UNLESS NOTED OTHERWISE.
- FIXTURES/EQUIPMENT BETWEEN TWO DOORS OR WINDOWS ARE TO BE CENTERED EQUALLY.
- EXTERIOR SEALANT FOR STONE SHALL COMPLY WITH SECTION 07 9005 JOINT SEALANTS. GENERAL BUILDING FACADE WEATHER SEALANT AND SHALL MATCH THE COLOR OF THE STOREFRONT.

EXTERIOR ELEVATION KEYNOTES:

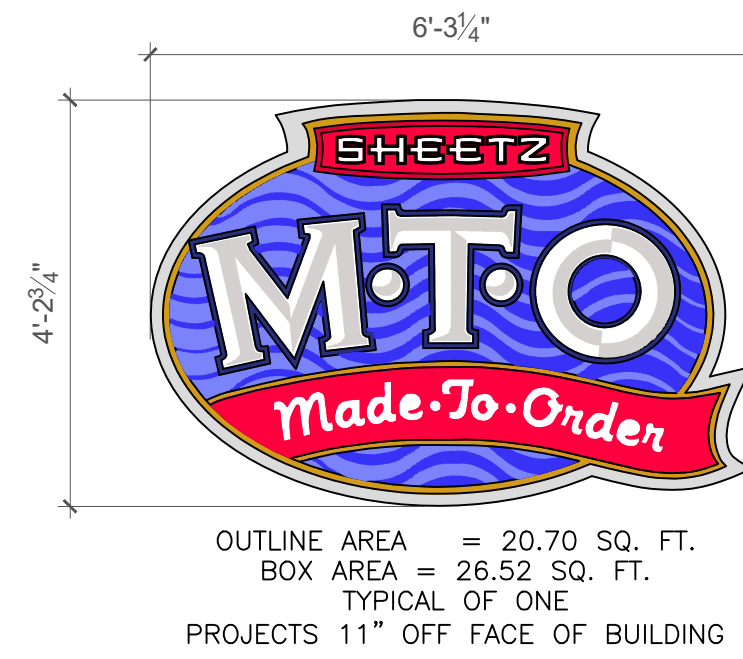
- BRICK VENEER (0/S 680 MOD BY CONTINENTAL BRICK CO.)
- CAST STONE SILL (COLOR = CRAB ORCHARD)
- ANCHORED CAST STONE MASONRY VENEER (COLOR = CRAB ORCHARD)
- EXTERIOR LIGHT FIXTURE, SEE ELEC DWGS
- ARCHITECTURAL CANOPY (COLOR = REGAL RED, PREMIUM TWO-COAT KYNAR FINISH)
- BRICK PAVER WALKWAY
- LIGHTED BOLLARD
- METAL COPING (COLOR = DARK BRONZE)
- WALL MOUNTED BUILDING SIGN, INTERNALLY ILLUMINATED. SEE SHEET A200.
- STANDING SEAM METAL ROOF (COLOR = BRITE RED)
- ROOF EQUIPMENT SCREEN (COLOR = DARK BRONZE)
- GUTTER (COLOR = RED)
- DOWNSPOUT (COLOR = DARK BRONZE)
- DRIVE-THRU WINDOW (IF APPLICABLE)
- METAL STANDING SEAM SHED STYLE AWNING AND FRAME ASSEMBLY (ROOF COLOR = BRITE RED, FRAME COLOR = DARK BRONZE)
- BRICK SOLDIER COURSE (0/S 680 MOD BY CONTINENTAL BRICK CO.)
- BRICK ROWLOCK COURSE (0/S 680 MOD BY CONTINENTAL BRICK CO.)
- CONTROL JOINT SEE MASONRY SPECS FOR COLOR
- STEEL ROOF LADDER AND CRANKY POST (COLOR = DARK BRONZE)
- STANDARD THROUGH WALL SCUPPER W/ CONDUCTOR HEAD & DOWNSPOUT (COLOR = DARK BRONZE)
- OVERFLOW SCUPPER
- ALUMINUM STOREFRONT SYSTEM
- EXTERIOR HOSE BIB
- OUTDOOR FURNITURE
- ELECTRICAL RECEPTACLE (REFER TO ELECTRICAL DRAWINGS)
- ELECTRICAL EQUIPMENT (REFER TO ELECTRICAL DRAWINGS)
- HM DOOR AND FRAME (COLOR = DARK BRONZE)
- EMERGENCY WATER CONNECTION
- SEAMLESS ALUM. PANEL SYSTEM W/ EXPOSED FASTENERS - COLOR: DARK BRONZE
- PROPANE LOCKER
- ICE MERCHANDISER
- RTI FILLPORT
- STEEL BOLLARD (COLOR = DARK BRONZE)
- CO2 FILLPORT
- DECORATIVE ALUMINUM FENCE



2 LEFT ELEVATION
1/4" = 1'-0"



A WALL MOUNTED "SHEETZ" BUILDING SIGN
1/2" = 1'-0"



B WALL MOUNTED "M.T.O." BUILDING SIGN
1/2" = 1'-0"

PROJECT NAME:
**NEW SHEETZ STORE
STORE #XXX**

**CITY
STREET**

Address Line 1
Address Line 2
City, ST XXXXX

OWNER:
SHEETZ, INC.

5700 SIXTH AVE.
ALTOONA, PA 16602

CONSULTANT

PROFESSIONAL

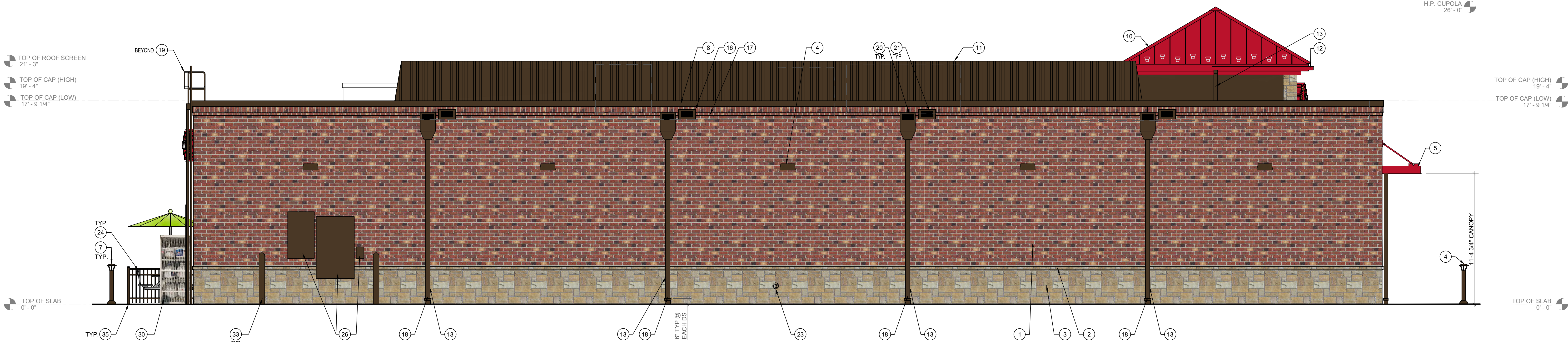
KEYPLAN

ISSUE: **04.03.2023**
SITE ID NO: #####
AUTHOR BY:
REVIEW BY:
VERSION: **6132L_v1.4**

EXTERIOR
ELEVATIONS

A201

6132L PROTOTYPE - FY23 v1.4



3 REAR ELEVATION
1/4" = 1'-0"

TYPICAL EXTERIOR ELEVATION NOTES:

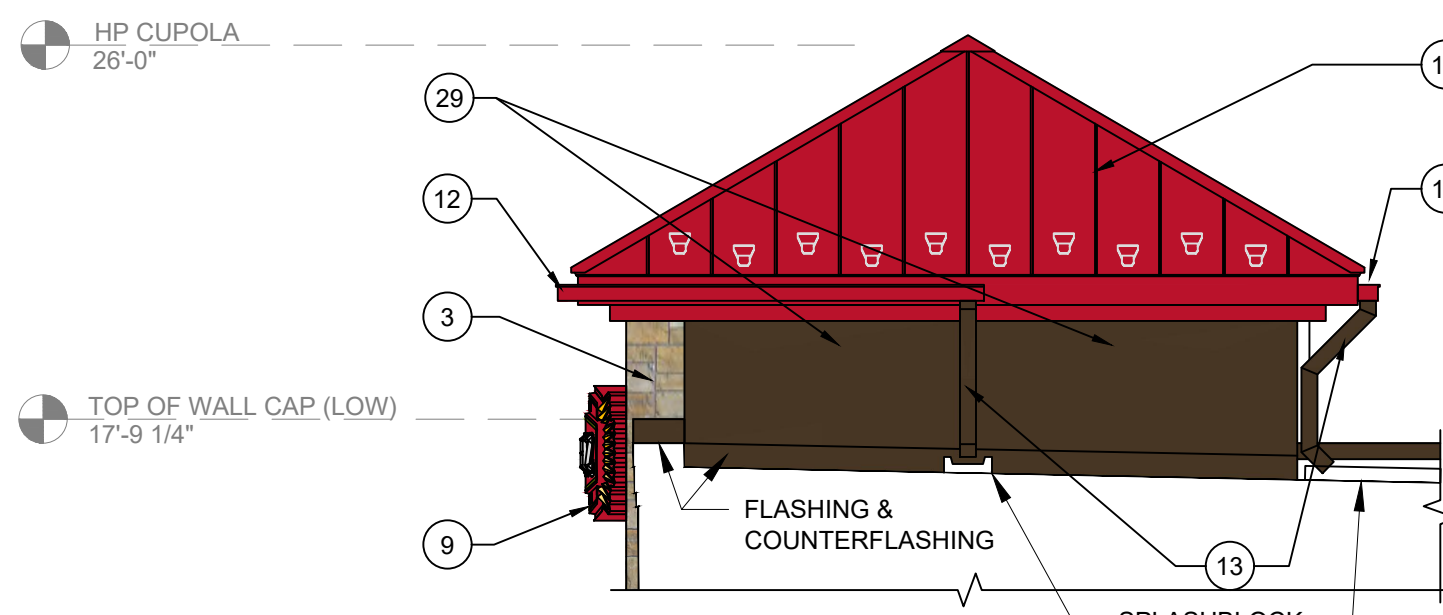
- ALL LIGHTS SHOWN ABOVE AND/OR BELOW DOORS OR WINDOWS ARE TO BE CENTERED ON THE DOOR OR WINDOW UNLESS NOTED OTHERWISE.
- FIXTURES/EQUIPMENT BETWEEN TWO DOORS OR WINDOWS ARE TO BE CENTERED EQUALLY.
- EXTERIOR SEALANT FOR STONE SHALL COMPLY WITH SECTION 07 9005 JOINT SEALANTS, GENERAL BUILDING FACADE WEATHER SEALANT AND SHALL MATCH THE COLOR OF THE STOREFRONT.

EXTERIOR ELEVATION KEYNOTES:

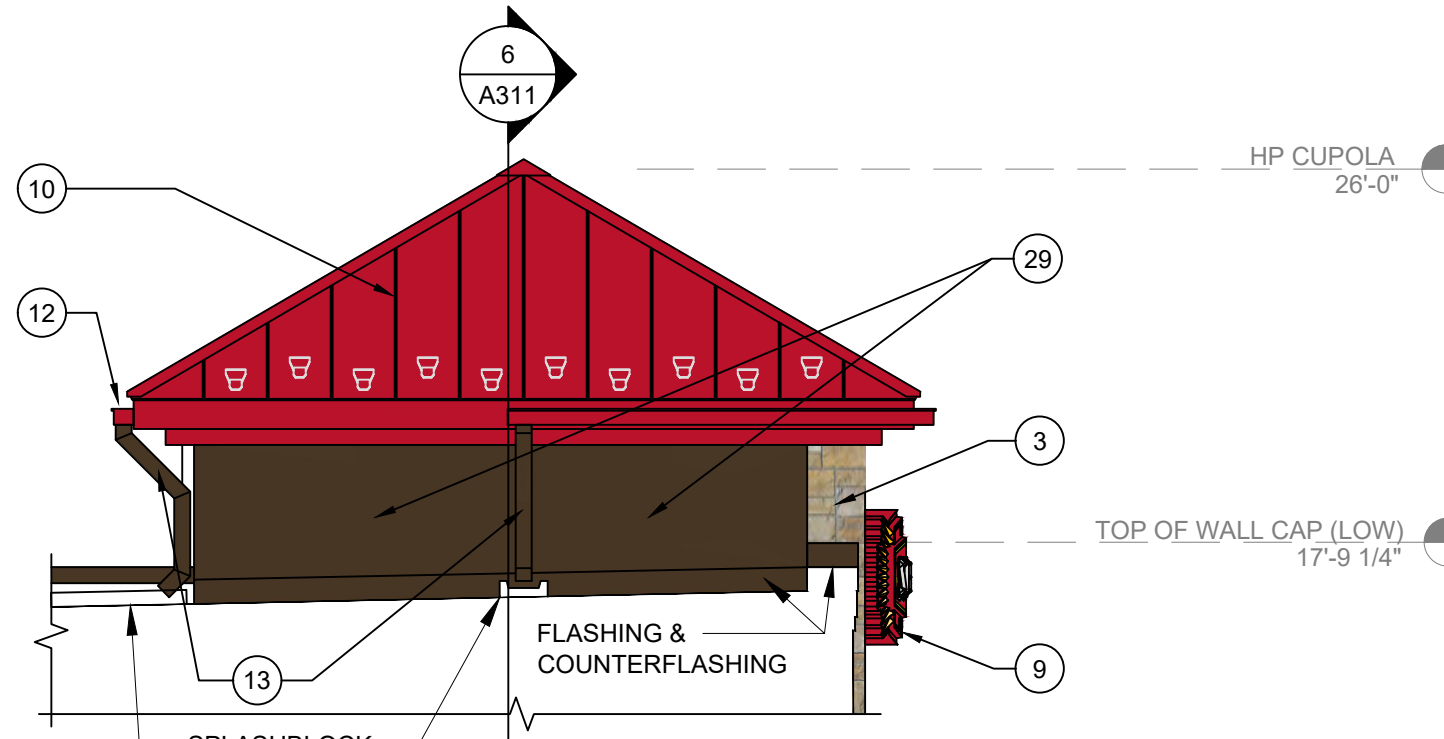
- BRICK VENEER (O/S 680 MOD BY CONTINENTAL BRICK CO.)
- CAST STONE SILL (COLOR = CRAB ORCHARD)
- ANCHORED CAST STONE MASONRY VENEER (COLOR = CRAB ORCHARD)
- EXTERIOR LIGHT FIXTURE, SEE ELEC DWGS
- ARCHITECTURAL CANOPY (COLOR = REGAL RED, PREMIUM TWO-COAT KYNAR FINISH)
- BRICK PAVER WALKWAY
- LIGHTED BOLLARD
- METAL COPING (COLOR = DARK BRONZE)
- WALL MOUNTED BUILDING SIGN, INTERNALLY ILLUMINATED. SEE SHEET A200.
- STANDING SEAM METAL ROOF (COLOR = BRITE RED)
- ROOF EQUIPMENT SCREEN (COLOR = DARK BRONZE)
- GUTTER (COLOR = RED)
- DOWNSPOUT (COLOR = DARK BRONZE)
- DRIVE-THRU WINDOW (IF APPLICABLE)
- METAL STANDING SEAM SHED STYLE AWNING AND FRAME ASSEMBLY (ROOF COLOR = BRITE RED, FRAME COLOR = DARK BRONZE)
- BRICK SOLDIER COURSE (O/S 680 MOD BY CONTINENTAL BRICK CO.)
- BRICK ROWLOCK COURSE (O/S 680 MOD BY CONTINENTAL BRICK CO.)
- CONTROL JOINT SEE MASONRY SPECS FOR COLOR
- STEEL ROOF LADDER AND CRANKY POST (COLOR = DARK BRONZE)
- STANDARD THROUGH WALL SCUPPER W/ CONDUCTOR HEAD & DOWNSPOUT (COLOR = DARK BRONZE)
- OVERFLOW SCUPPER
- ALUMINUM STOREFRONT SYSTEM
- EXTERIOR HOSE BIB
- OUTDOOR FURNITURE
- ELECTRICAL RECEPTACLE (REFER TO ELECTRICAL DRAWINGS)
- ELECTRICAL EQUIPMENT (REFER TO ELECTRICAL DRAWINGS)
- HM DOOR AND FRAME (COLOR = DARK BRONZE)
- EMERGENCY WATER CONNECTION
- SEAMLESS ALUM. PANEL SYSTEM W/ EXPOSED FASTENERS - COLOR: DARK BRONZE
- PROPANE LOCKER
- ICE MERCHANDISER
- RTI FILLPORT
- STEEL BOLLARD (COLOR = DARK BRONZE)
- CO2 FILLPORT
- DECORATIVE ALUMINUM FENCE



4 RIGHT ELEVATION
1/4" = 1'-0"



5 CUPOLA FROM ROOF
1/4" = 1'-0"



6 CUPOLA FROM ROOF
1/4" = 1'-0"

HEETZ, INC.

700 SIXTH AVE.
LTOONA, PA 16602

CONSULTANT

PROFESSIONAL

EYPLAN

[illegible]

DATE:	08-11-23
PROJECT NO:	
AUTHOR BY:	DNC
VIEW BY:	
SHEET TITLE	

GAS AWNING
CONCAVE FASCIA

AWNING

