

RED OAKS PARK



MADISON HEIGHTS DESIGN UPDATE

December 2, 2024

SITE PLAN











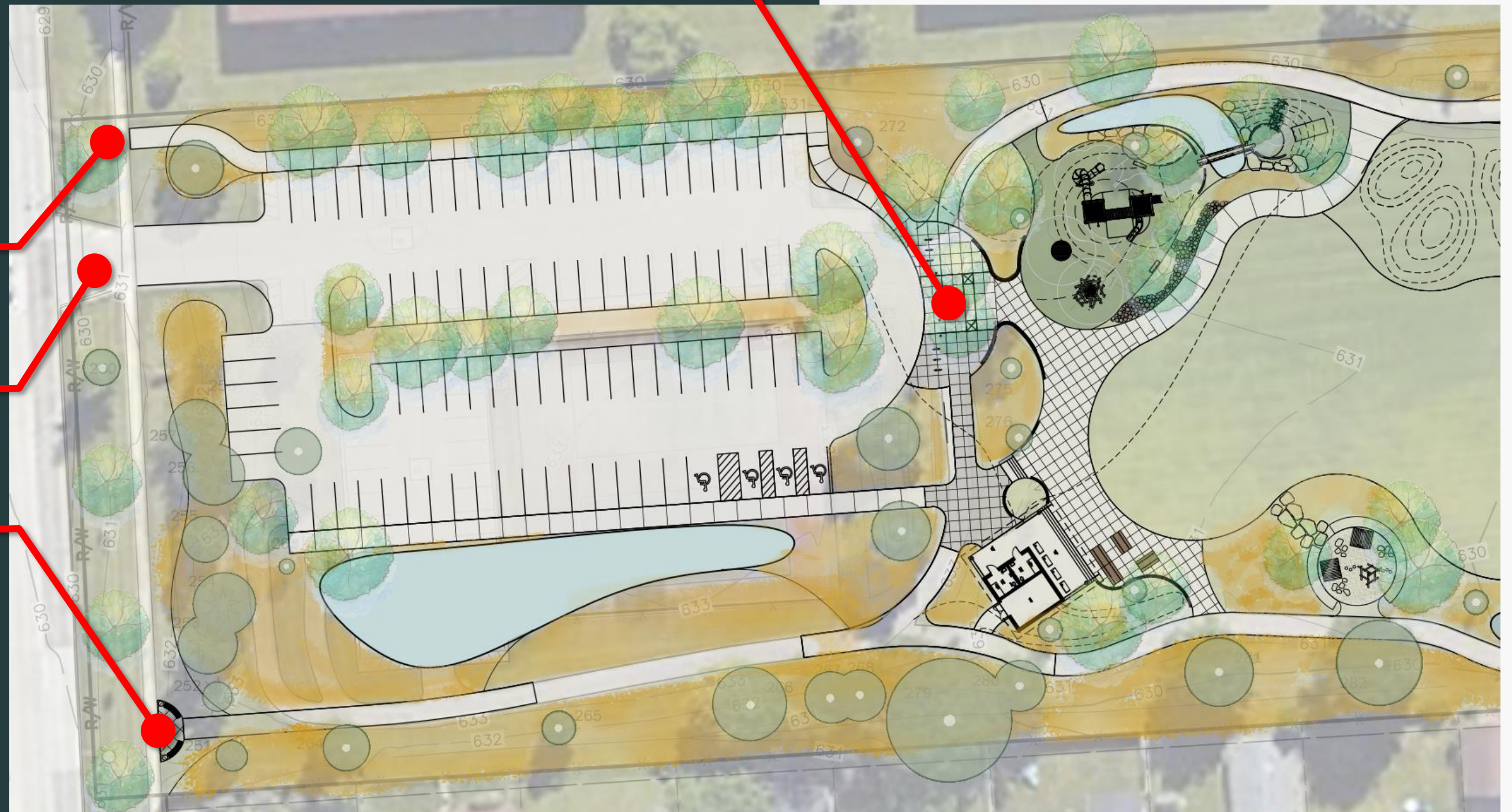
ENTRIES

Drop-off plaza

East Pedestrian access

Parking lot

West Pedestrian access

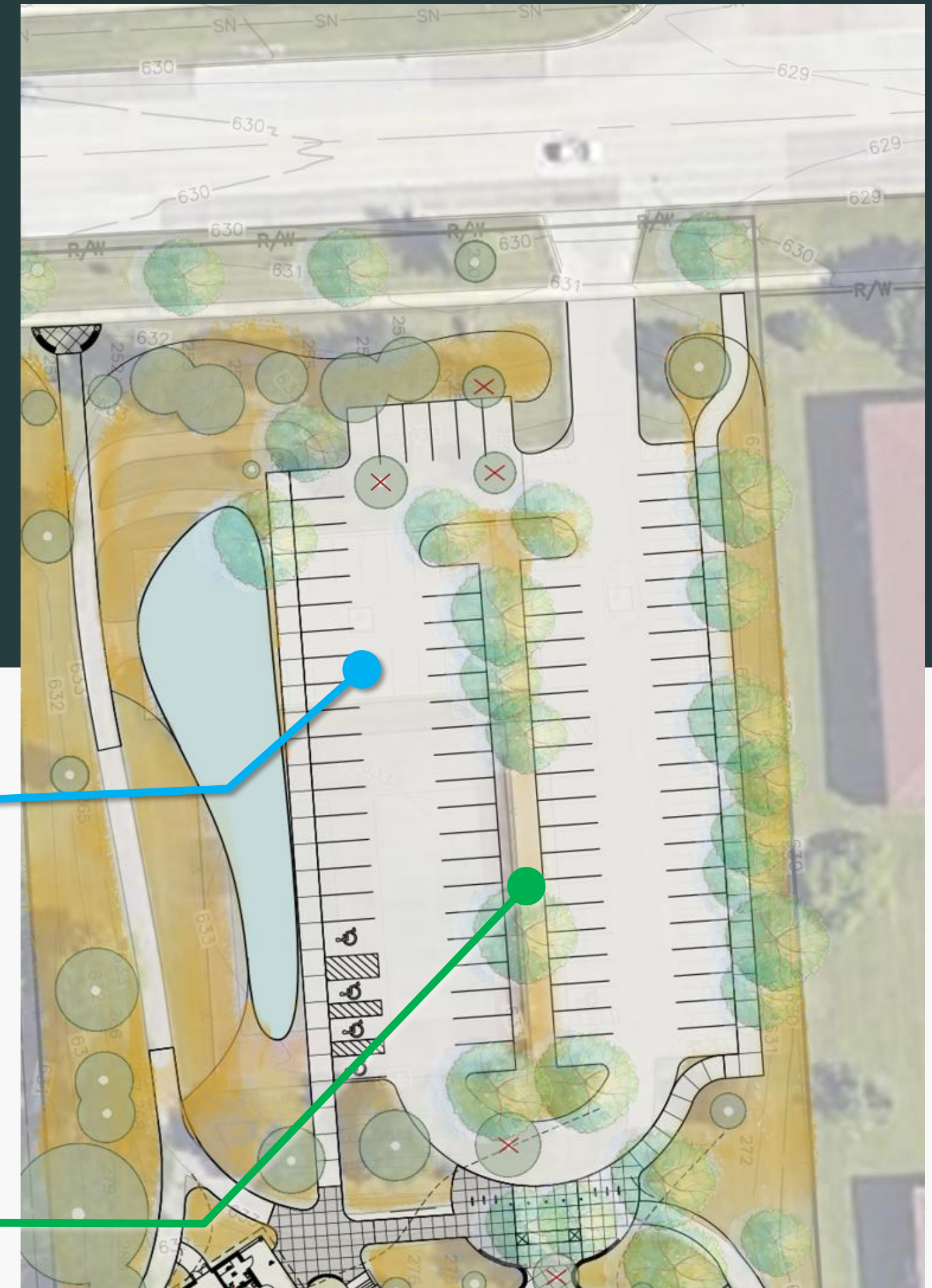


PARKING LOT

- Asphalt
- No curbs except to direct water
- Parking blocks
- Direct all feasible runoff to bioswales/rain gardens



Add additional parking bays
for a total of +/- 85 spaces

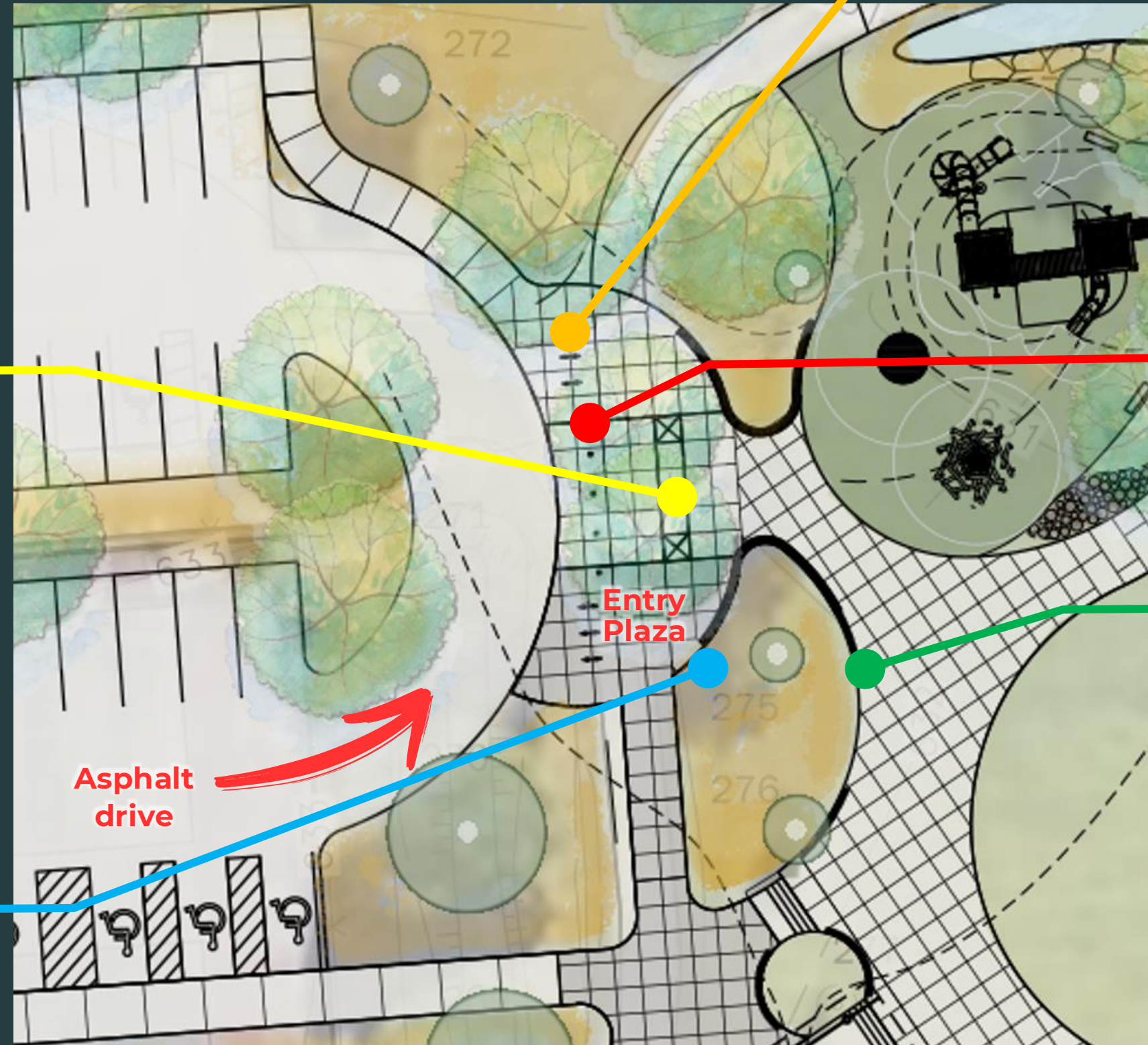


ENTRY PLAZA

Tree grille strips



Sign/map/Red Oaks Park Info



Black hoop bike racks (6)



Lit bollards



Concrete exposed aggregate seatwall

ACCESSIBLE FEATURES

In addition to meeting all ADA Accessibility Standards, the Red Oaks Park design **prioritizes universal accessibility**, providing opportunities for people of **all abilities** to **interact** and **engage** with each other throughout the park.



Pedestrian access
from 13 Mile Rd

Accessible pathways
throughout

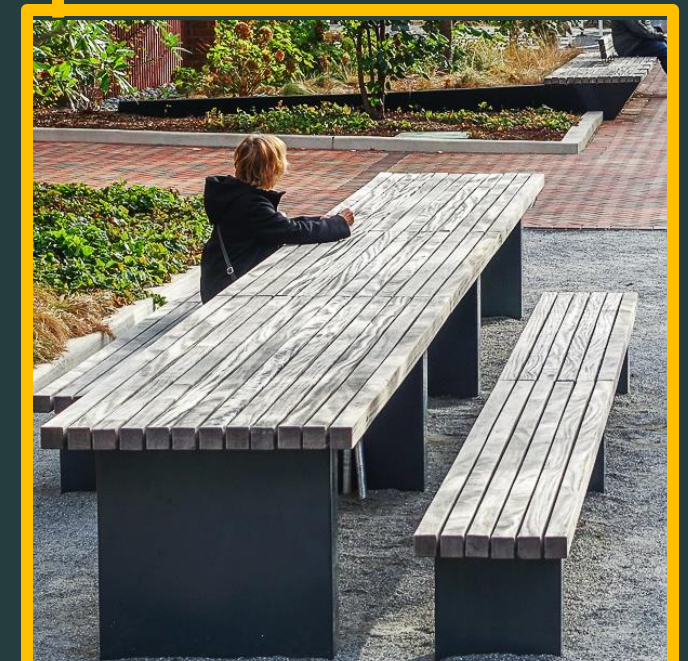
Fixed mount adult
changing tables
in restrooms



Poured-In-Place
surfacing in the entire
play garden



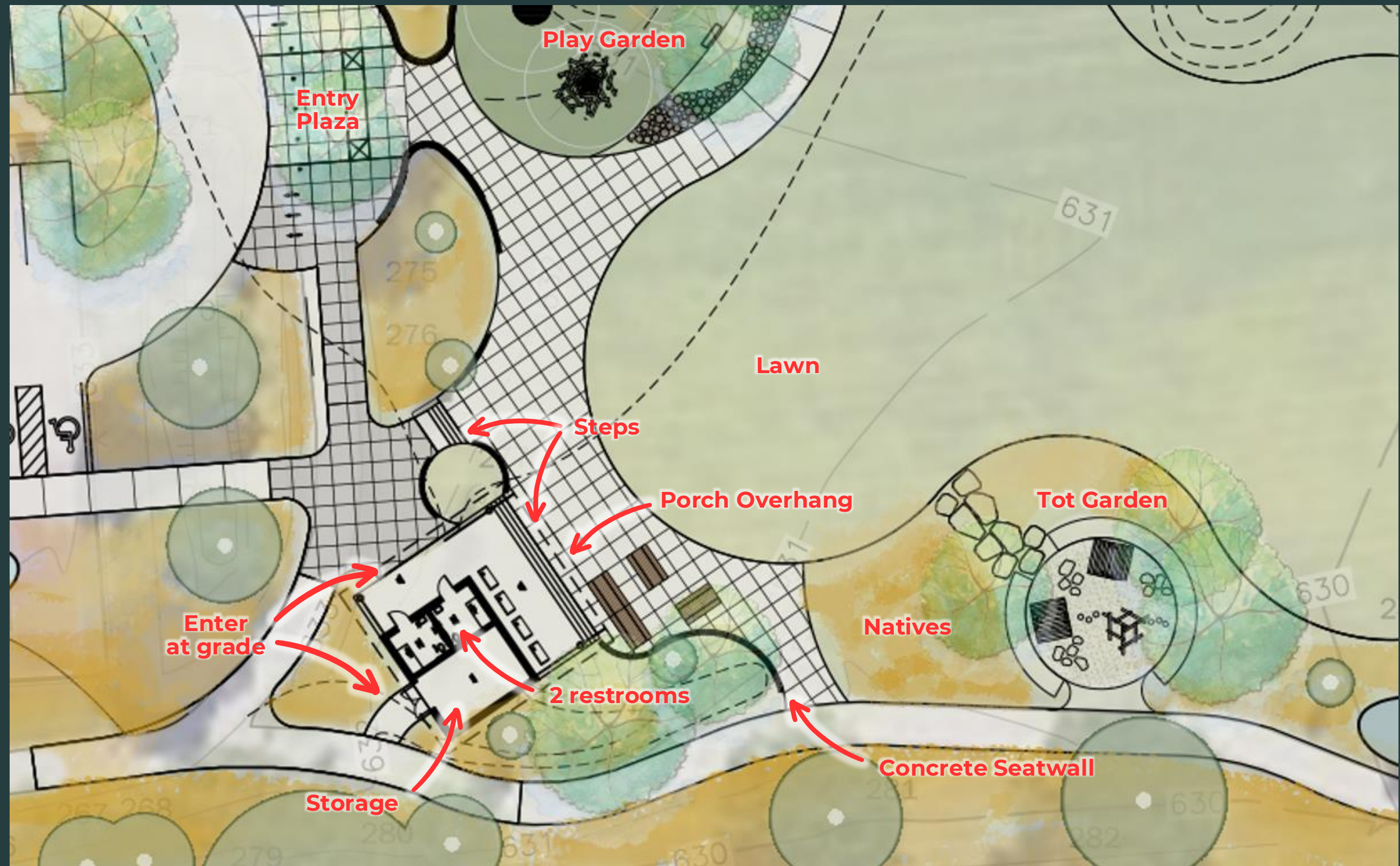
Various seating
options throughout



PORCH GARDEN

Amenities included:

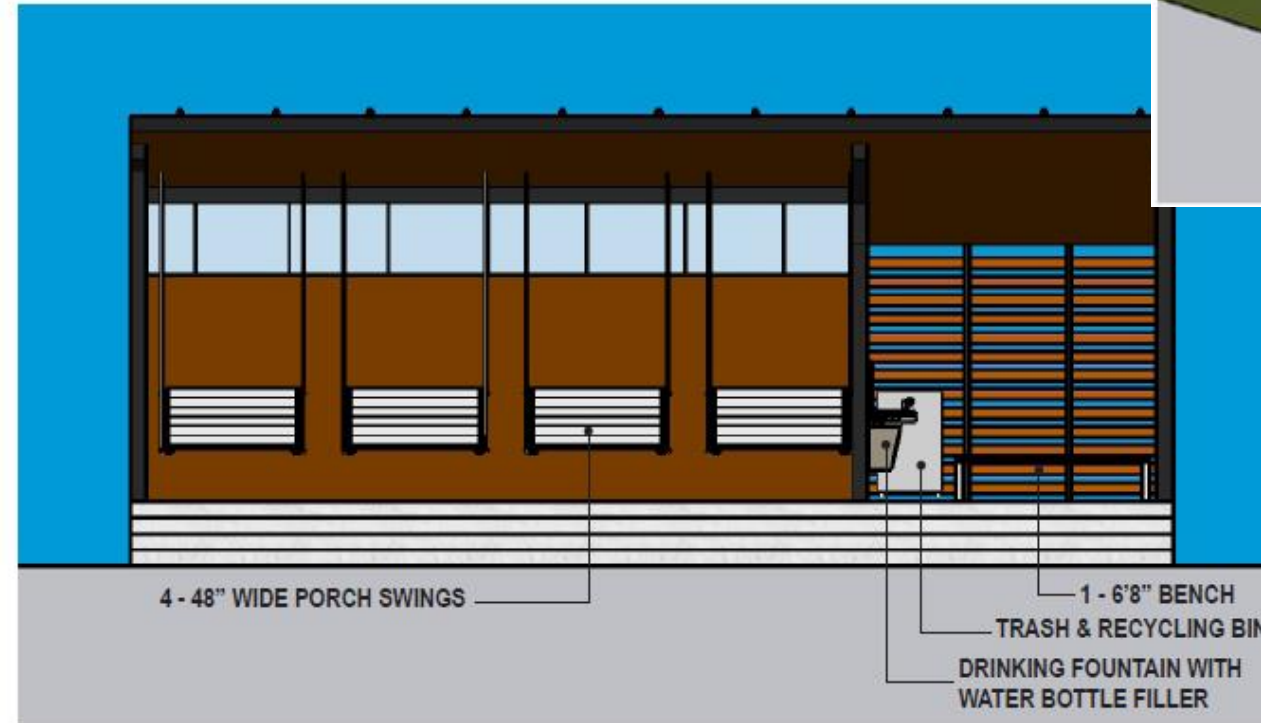
- Swings
- Adirondacks
- Tables
- Water filling station
- Bike racks (6)
- Charging stations
- Native landscaping



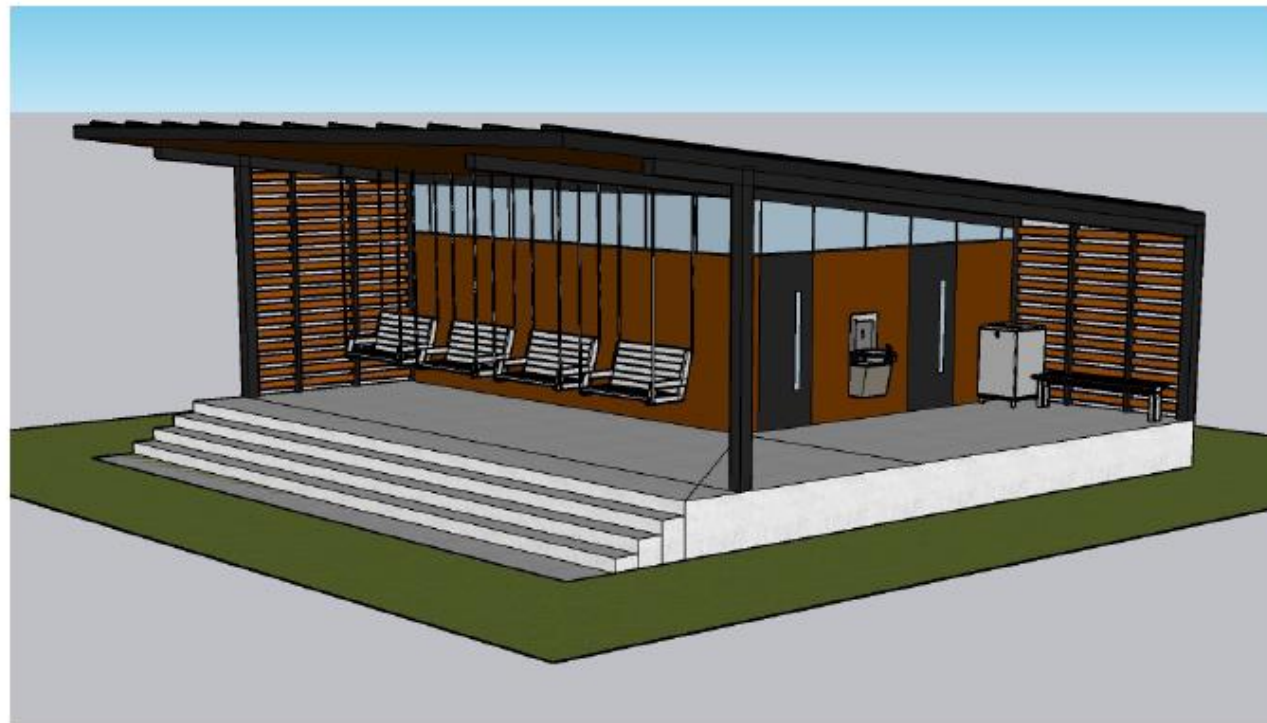
PORCH PAVILION CONCEPTS



SIDE VIEW



FRONT VIEW



PERSPECTIVE VIEW

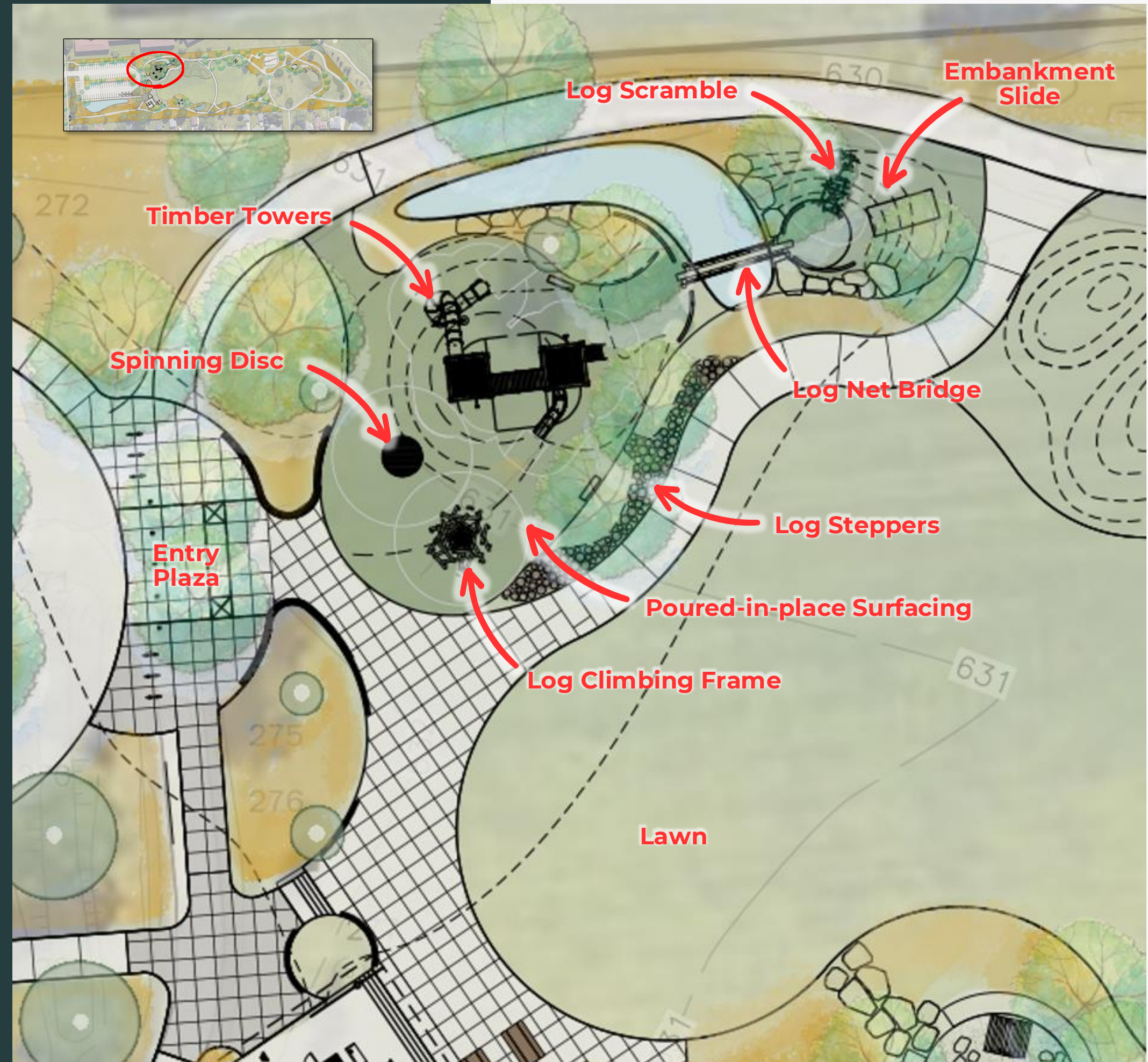


REAR VIEW - OPTIONAL RELOCATED STORAGE ENTRANCE

- Block building with board and batten siding and brick wainscot
- Black metal standing seam roof
- Screen walls for added privacy
- Windows

PLAY GARDEN

- Poured-in-place surfacing + Artificial turf
- Topography - Mounding
- Manufacturers: Earthscape, Duncan & Grove, Columbia Cascade
- Large Dual Timber Tower Structure, Log Climbing Structure, with play pieces and smaller elements
- Seating (traditional and natural)
- Shade
- Net Bridge over GSI
- Art



PLAY GARDEN



Timber Towers



Log Net Bridge



Embankment Slide



Log Climbing Frame



Spinning Disc



Log Steppers



Log Scramble & Steps

Color Palette



BLUE BATH 1155



OCEAN BAY BLUE 74

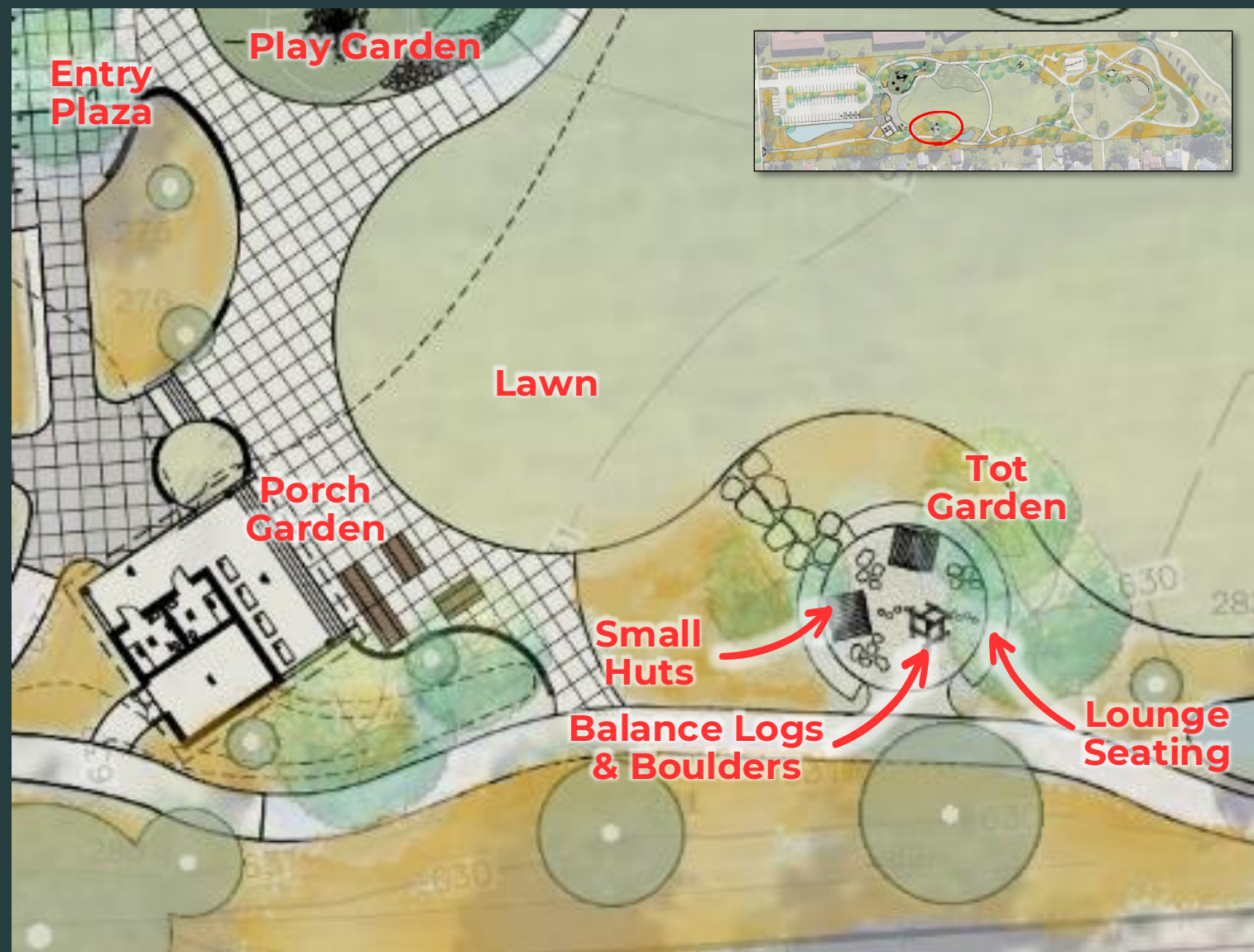


MADISON AVENUE 1163

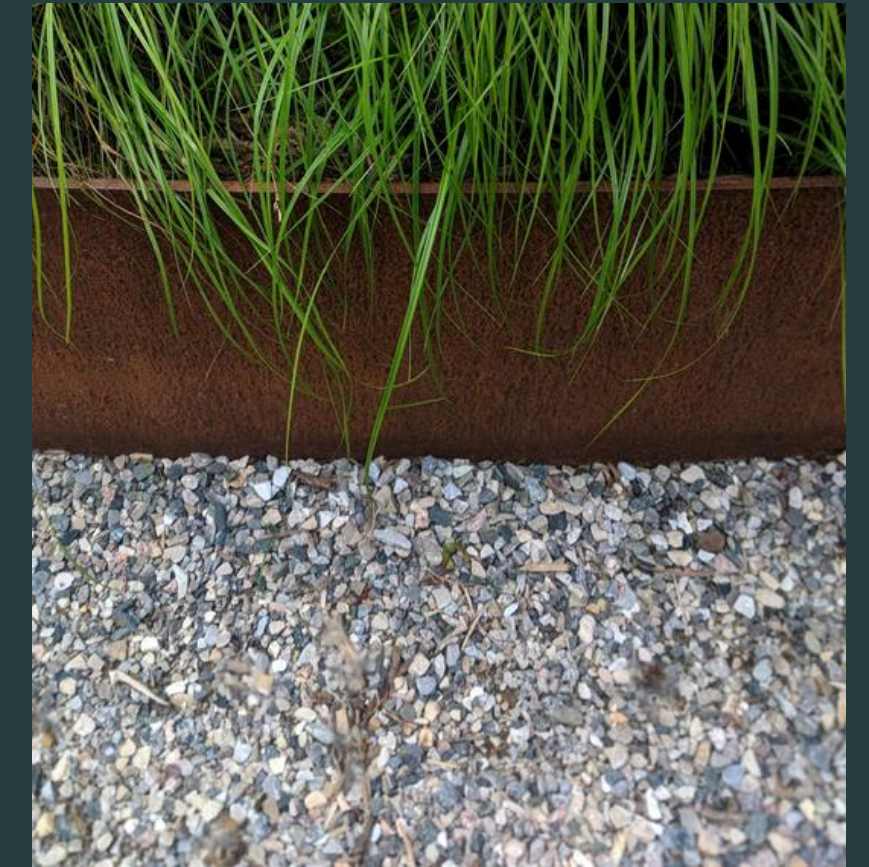


NATURAL ROBINIA

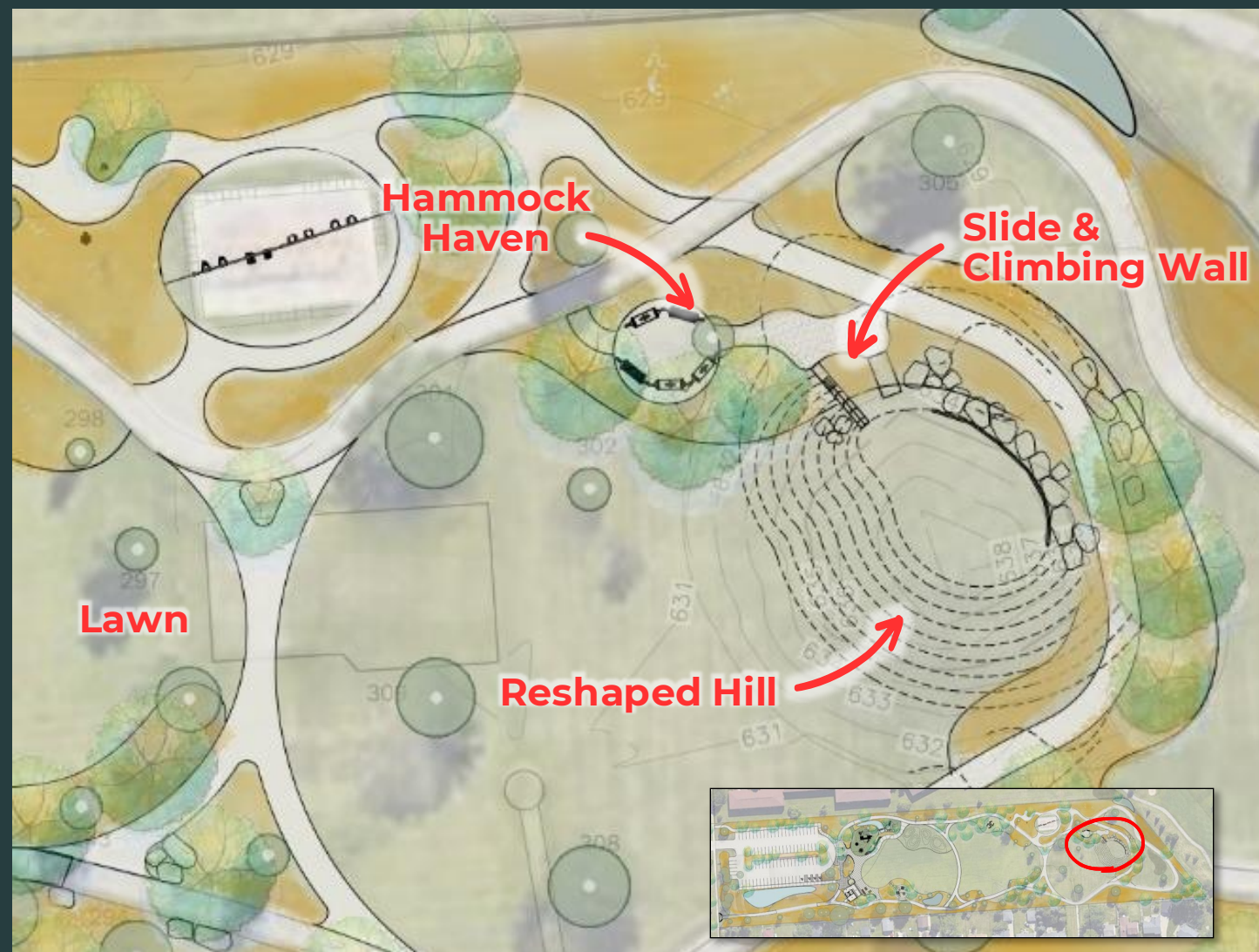
TOT GARDEN



- Lounge Style Seating
- Decomposed Granite or pea gravel for digging and playing
- Small Huts
- Native Landscaping
- Significant Trees for Shade
- Balance Logs & Boulders



THE HOLLOW & HILL



- Hammock Haven
- Straight Tube Slide
- Angled climbing wall
- Native Landscape stabilization
- Reshaped sledding hill
- Outcropping stone wall and small diameter log railing



REFLECTION GARDEN



- Art & Whimsy
- Colorful
- Native trees
- Refined plantings
- Seating for respite and reflection



Red Oaks Park | Working Schedule for Construction in 2025

September 27th

✓ 60% DD Review (**Phase I**)

October 9th

✓ 60% DD comments back from OCPR

October 25th

✓ 60% DD Review (**Phase II – remainder of park**)

December

☐ ARPA Funds Purchase Order to DeMaria

☐ Submit Site Plan Package (**Phase I and Phase II – entire park**) to Madison Heights for Administrative Review/Approval

January

☐ 90% CD Review Meeting

☐ Order Playground Equipment (long lead time)

February

☐ 90% Cost Estimate Review

☐ CDs Complete

☐ Final Cost Estimate Review

☐ Public information/update out

Spring 2025

☐ Construction Begins