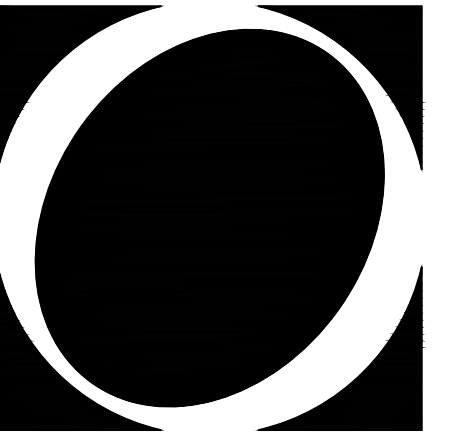
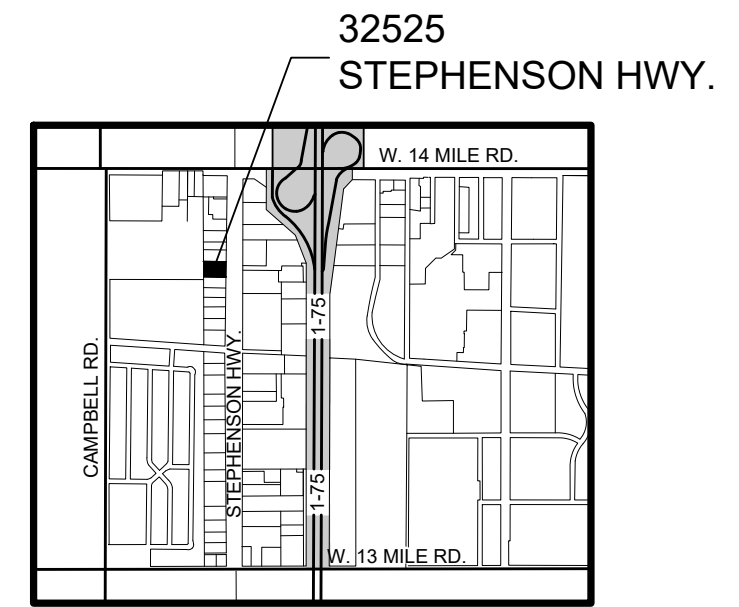


JK SOUND & SECURITY
32525 STEPHENSON HWY.
MADISON HEIGHTS, MICHIGAN 48071

SPECIAL USE LAND APPLICATION
CAR SECURITY & AUDIO INSTALLATIONS



ISSUED FOR:
 SPECIAL LAND USE APPLICATION 03-29-26



LOCATION MAP

DRAWING INDEX:

- S1 SITE PLAN & SITE DATA
- A1 EXISTING FLOOR PLAN
- A-2 ENLARGED PLANS

PROPERTY DESCRIPTION:

T1N, R11E, SEC 2,
 MALLY'S INDUSTRIAL SUB NO 2.

SITE DATA:

PARCEL ID: 25-02-101-030
 ZONED: M1 LIGHT INDUSTRIAL, OFFICE, RETAIL
 CONSTRUCTION TYPE: IIA
 SITE AREA: .68 ACRES (27,858 Sq.Ft.)

BUILDING DATA:

USE GROUP: APPAREL WAREHOUSING
 BUILDING AREA: 12,507 Sq.Ft.
 (GROSS 48% OF TOTAL SITE)
 USEABLE FLOOR AREA (UFA): 10,982 Sq.Ft.
 NOT SPRINKLED

Building Useable Floor Area (UFA)	
WAREHOUSE:	= ±8,272.0 Sq.Ft.
OFFICE:	= ±1,574.0 Sq.Ft.
RECEIVING:	= ±1,014.0 Sq.Ft.
TOTAL	= ±10,860 Sq.Ft.

PARKING:

WAREHOUSE:
 1 SPACE PER 1,000 Sq.Ft. of UFA=8
 OFFICE:
 1 SPACE PER 300 Sq.Ft. of UFA=5
 8+5 = 13 Spaces Required

JK AUDIO REQUIREMENTS:

AUTOMOBILE SERVICE
 OFFICE:
 1 PER 300 Sq.Ft. of UFA (Existing, Allocated)
 INSTALLATIONS:
 2 PER SERVICE BAY (1 Service Bay)
 =8 SPACES REQUIRED (Existing, Allocated)

TOTAL REQUIRED SPACES = 13
 27 AVAILABLE SPACES
 (2 EXISTING ADA VAN ACCESSIBLE)

OCCUPANT LOAD (GROSS Sq.Ft.)
 WAREHOUSING APPAREL: 1 PERSON / 500 Sq.Ft.
 (12,507 Sq.Ft.) = 25
 OFFICE: 1 PERSON / 150 Sq.Ft.
 (1,917 Sq.Ft.) = 13
TOTAL OCCUPANT LOAD= 35 PERSONS

CODE REFERENCES
 2015 MICHIGAN REHAB CODE
 2021 INTERNATIONAL FIRE CODE (IFC)

O&Co
 Design and Planning

1935 YOSEMITE BLVD. 28
 BIRMINGHAM, MICHIGAN
 48009

248.909.2808

PROJECT:

J K SOUND & SECURITY
 32525 Stephenson Hwy.
 Madison Heights
 MI 48071

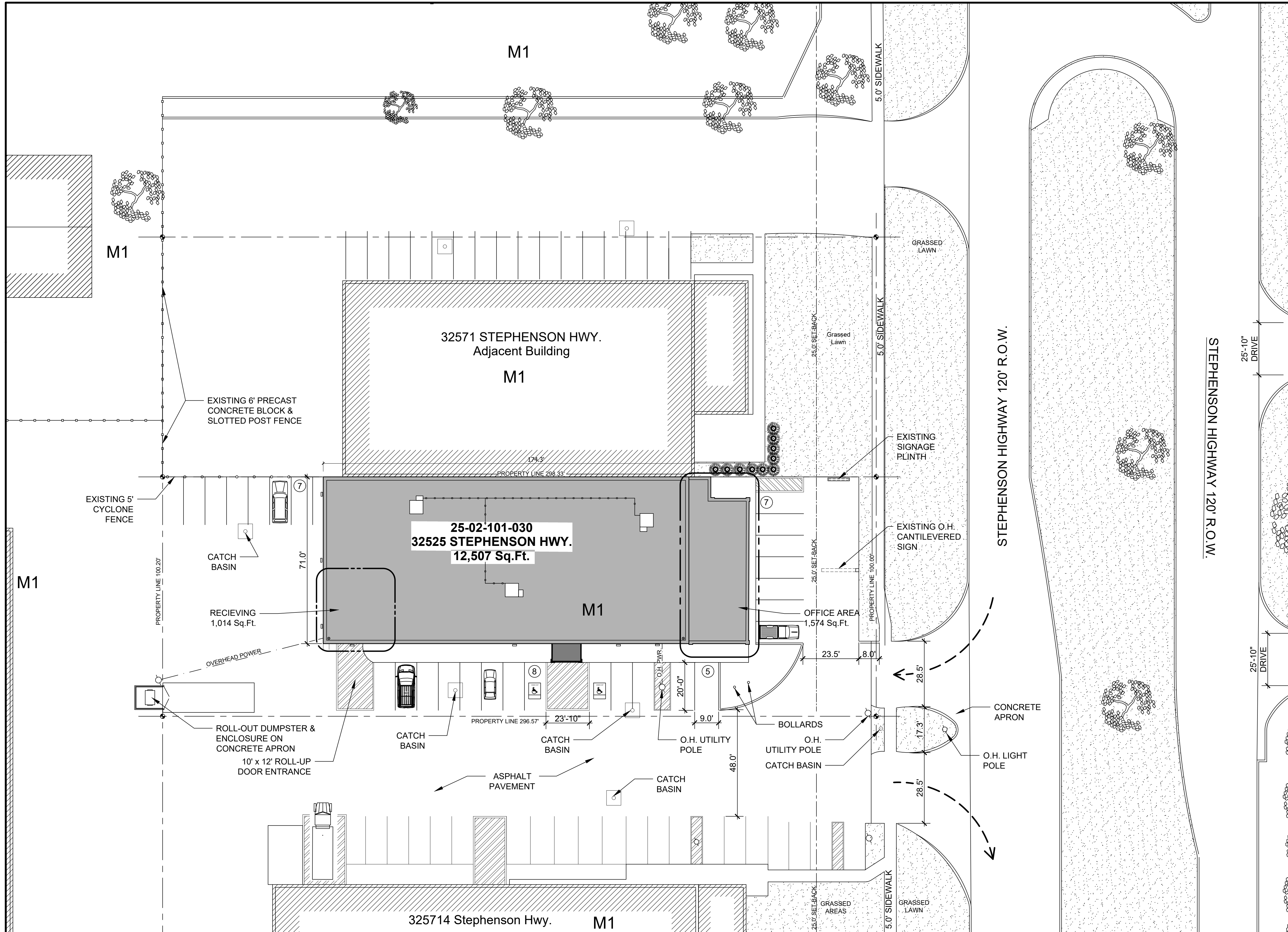
DRAWING TITLE:

**SITE PLAN
 DATA
 & ROOF PLAN**

DRAWN: PO
 CHECKED: --

SHEET No.

S1



1 SITE PLAN
 Scale: 1:20

