

# Luminaire Options

## LED Roadway Series

LED Roadway Series luminaires are offered in three high-lumen performance packages designed to deliver energy-efficient outdoor lighting with optimal coverage for all roadway classifications. These luminaires are designed for residential, municipal, county and state thoroughfares in both underground and overhead configurations.

### Lighting Applications:

- Local, collector and major roadways
- Intersections and roundabouts
- Commercial and industrial developments
- Parks and recreational areas
- Rural residences and barnyards
- Campuses
- Walkways
- Alleys
- Parking lots



## LED Teardrop Series

LED Teardrop Series luminaires are offered in eight high-efficiency LED performance packages designed as a period style luminaire for street lighting applications. The system is constructed of a precision-engineered prismatic borosilicate glass teardrop refractor configured in a Type 3 distribution. These luminaires are designed for municipal, county and state thoroughfares.

### Lighting Applications:

- Downtown districts
- Urban roadways and streetscapes
- Parks and walkways
- Campuses
- Village squares
- Historic districts
- Plazas
- Commercial developments

Decorative  
Teardrop Fixture



### Product Information:

Luminaire Housing Color	Wattage	Light Source	Correlated Color Temperature (CCT)*1	Initial Delivered Lumens*2	Typical Mounting Heights
Black or gray	58	LED	4,000K	7,334	30'
Black or gray	136	LED	4,000K	17,400	30'
Black or gray	206	LED	4,000K	29,252	30' or 40'

1. The correlated color temperature of a light source is measured on the Kelvin (K) scale. Color temperatures of light sources may range in appearance between warm white (1,800K - 3,000K), cool white (3100K - 4500K) and daylight (4,600K - 6,500K).

2. Measurements taken from luminaire with standard option only (no other accessories or attachments used during testing).

### Product Information:

Luminaire Housing Color	Wattage	Light Source	Correlated Color Temperature (CCT)*1	Initial Delivered Lumens*2	Typical Mounting Heights
Black	21	LED	4,000K	3,618	27' or 29'
Black	43	LED	4,000K	7,010	27' or 29'
Black	63	LED	4,000K	10,176	27' or 29'
Black	83	LED	4,000K	13,116	27' or 29'
Black	103	LED	4,000K	16,055	27' or 29'
Black	121	LED	4,000K	18,543	27' or 29'
Black	144	LED	4,000K	21,482	27' or 29'
Black	153	LED	4,000K	22,613	27' or 29'

# Poles & Posts

## Street and Roadway Pole Options

Providing the necessary illumination to enhance driver and pedestrian safety is our number one goal.

We offer posts of various heights, colors and design. Options range from aluminum, steel, wood and fiberglass posts.

Foundation types vary from direct bury posts to full break away options as well as high band concrete foundations.

Heights can vary from 28' - 40'.

Standard "cobra" fixture on pole with foundation



**DTE Post Code 06:** 28.75' black or silver single davit arm steel post mounted to concrete foundation-engineered to allow receptacles. Breakaway base option for this post design.

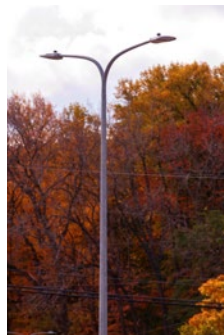


**DTE Post Code 71/73 & 81/83:** 30' or 40' black or silver dual arm fiberglass direct bury post with breakaway base.

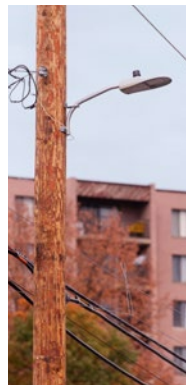
Direct-bury pole with roadway luminaire



**DTE Post Code 70/72 & 80/82:** 30' or 40' black or silver single arm fiberglass direct bury post with breakaway base.



**DTE Post Code 87:** 28.75' black or silver dual Davit arm steel post mounted to concrete foundation-engineered to allow receptacles.



**DTE Wood Poles:** Existing distribution poles or new 30' wood poles

## Decorative Post Options

Often used in downtown streetscapes, historic districts, subdivision lighting, walkways and parks, these lighting options help provide the desired look and feel for the intended space.

These decorative posts are offered in a variety of designs and colors, ranging between 12' - 14'. According to customer preferences, they can be constructed of various materials including aluminum, steel, concrete and fiberglass.

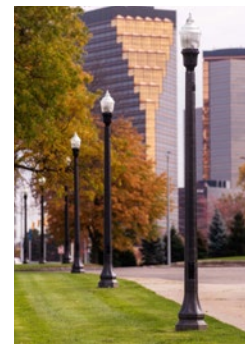
DTE provides a variety of options for flexibility during installations that include direct embedded posts and anchor base posts that can be mounted to standard or high-band concrete foundations.



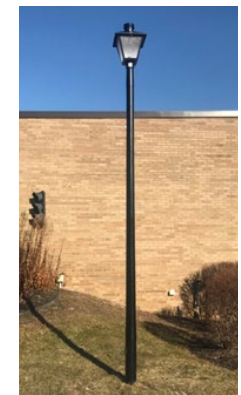
**DTE Post Code 16:** 12' or 14' black fiberglass post with concrete foundation. Engineered to support decorative dual lum brackets and receptacles.



**DTE Post Code 12 & 14:** 12' or 14' black aluminum post. Direct bury or concrete foundation options available. Engineered to support banner arms and receptacles.



**DTE Post Code 15:** 13' black or salt & pepper concrete direct bury post. Engineered with provisions for banner arms and receptacles.



**DTE Post Code 95:** 14' black fiberglass direct bury post.