

Bike Racks						
	Uline	ThePark		Victor Stanley		
	Circle Bike Rack Bike	Custom Logo Cut Panel	Circle Bike Rack	Custom Rack	U Bike Rack	Circle Bike Rack
Unit	\$250.00	\$329.00	\$299.00	\$427.00	\$427.00	529
Qty.	12	12	12	12	12	12
Shipping	\$134.27	\$321.97	\$307.83	\$550.00	\$550.00	\$550.00
Total	\$3,134.27	\$4,269.97	\$3,588.00	\$5,124.00	\$5,124.00	\$6,348.00

Notes:

- Uline has the best circle bike rack price, but price is only for stainless steel or black. Lowest cost option for the circle bike rack will be with “The Park”.
- Best deal for a branded bike rack is with the “The Park”.
- If we select multiple furnishing types from the same company, it is likely we would save more on Shipping as they would all come together. How much savings is hard to say until we make selections.



[More Images](#)

CIRCLE BIKE RACK

Clean, minimalist design for metro areas.

- 2 contact points for locking frame and wheel.
- 10-gauge, galvanized steel or attractive powder coating.
- Mounting hardware included.

CIRCLE BIKE RACK

☐ Galvanized
☒ Black

MODEL NO.	DESCRIPTION	SIZE L x W x H	BIKE CAPACITY	WT. (LBS.)	PRICE EACH		ADD TO CART
					1	3+	
H-6572	Circle	35 x 2 1/2 x 33"	2	32	\$290	\$275	Specify Color

\$250

SHIPS VIA UPS

Click to Print



The Park Catalog
931 Village Blvd Ste 905-354, West
Palm Beach, FL 33409
800-695-3503
noreply@theparkcatalog.com

Request a Quote to receive 20% OFF ▶



2 Bike Circular Rack - 2-3/8" Round Tubing - Stainless Steel

~~\$353.00~~ \$299

Request a quote ?

Quick Overview

Best Price Guarantee

Bulk Discount

Free Expert Consultation
800-695-3503

Request a quote ?

Mounting Option

Choose an Option... ▼

\$353.00

536 Series Color Chart

Powder Coat



Azure Blue

Traffic Yellow

Pure Orange

Carmine Red

Heather Violet

Blue Lilac

Sky Blue

Traffic Green

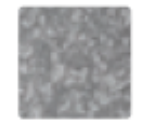
Traffic Grey A

Pale Brown

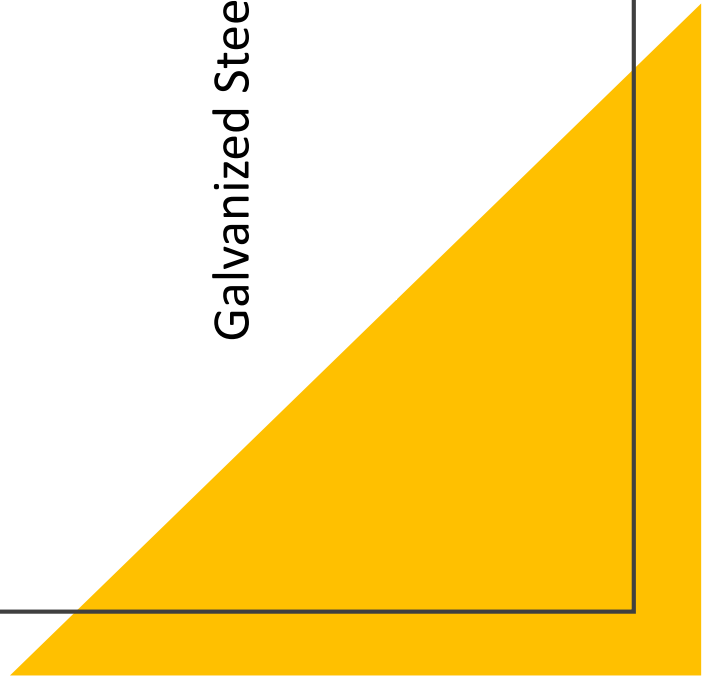
Signal White

Traffic Black

Galvanized



Galvanized Steel







\$427

VICTOR  STANLEY™

Create



BRHS-101

CYCLE SENTRY™ COLLECTION

DETAILS

Circular horseshoe bike rack constructed of 2.375 in (60 mm) OD tubular steel pipe.

IMAGES

CAPACITY

2 bikes.

STANDARD

All fabricated metal components are steel shotblasted, etched, phosphatized, preheated and electrostatically powder-coated with TGIC polyester powder coatings.

OPTION

Powder coat over galvanized finish. Satin stainless-steel finish. Surface mount. In-ground mount.

PRINT SAVE SHARE

MATERIAL

Tubular Steel

CAPACITY

2 Bikes

COLORS



\$529

BRQS-101

CYCLE SENTRY™ COLLECTION

DETAILS

Single wide-loop square bike rack constructed of 2.375 in (60 mm) OD tubular steel pipe.

IMAGES

CAPACITY

2 bikes.

DOCUMENTS

STANDARD

All fabricated metal components are steel shotblasted, etched, phosphatized, preheated and electrostatically powder-coated with TGIC polyester powder coatings.

OPTION

Powder coat over galvanized finish. Surface mount. In-ground mount.

PRINT SAVE SHARE

MATERIAL

Tubular Steel

CAPACITY

2 Bikes

COLORS



\$427